

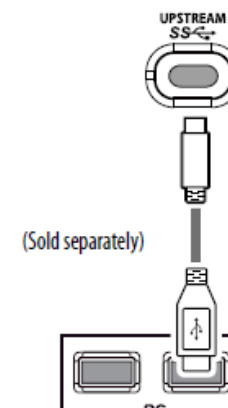
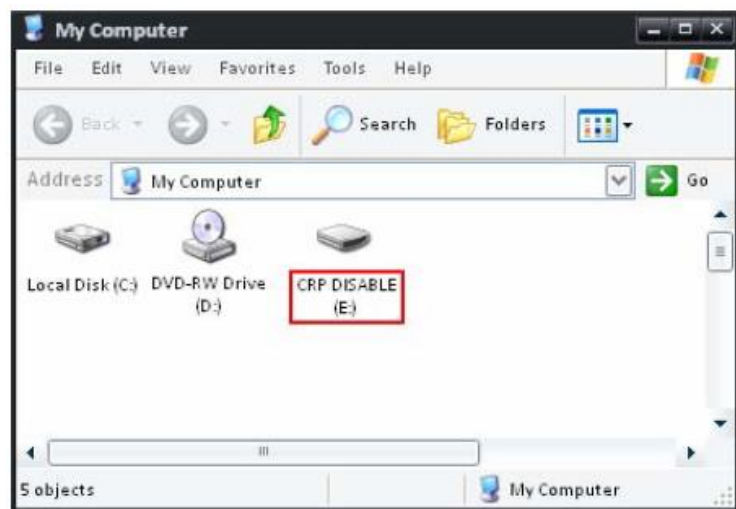
How to update to “USB Controls” from “CRP DISABLD”

- Prepare items

- 1) Windows 10 PC without security program
- 2) USB cable
 - USB-C cable or USB-C to A cable(sold separately) : 27BK67U, 27BL85U, 27UK850, 27UL850
 - USB-B to A cable : 27GL850

- Symptom

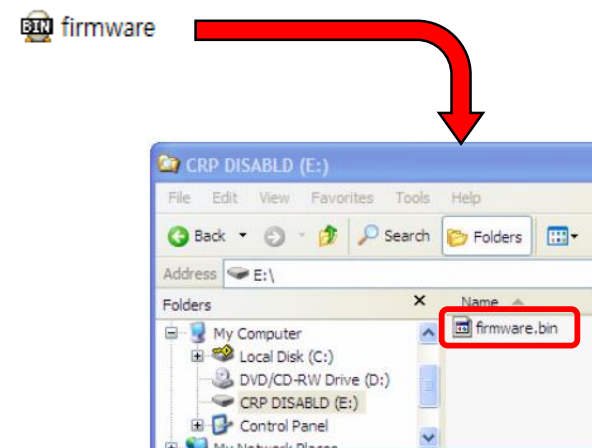
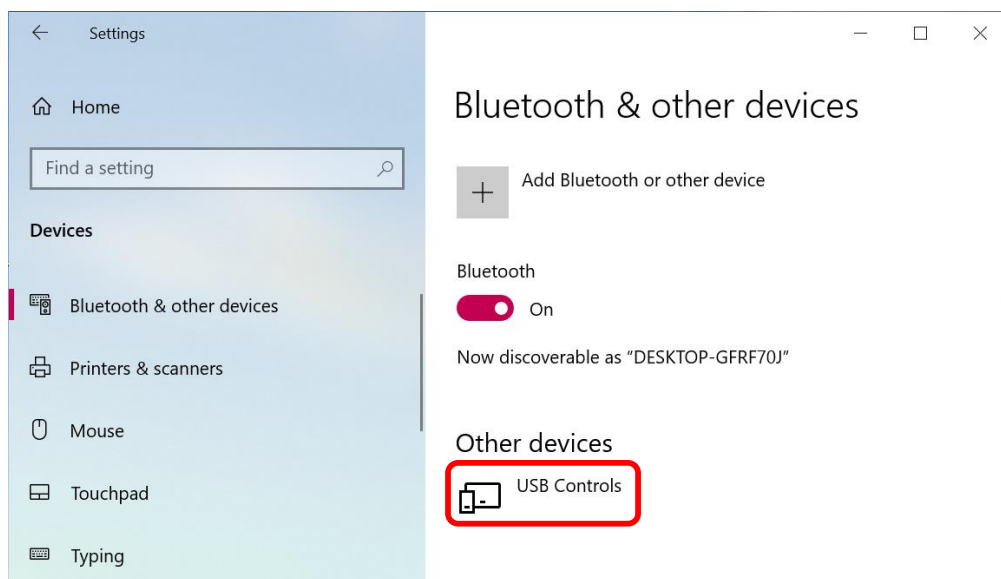
- 1) Connect PC and Monitor with USB cable
- 2) Turn on PC and Monitor
- 3) You can see “CRP DISABLD” device in Devices and drivers on This PC as the below



How to update to “USB Controls” from “CRP DISABLD”

- How to update the LG firmware (On Windows OS)

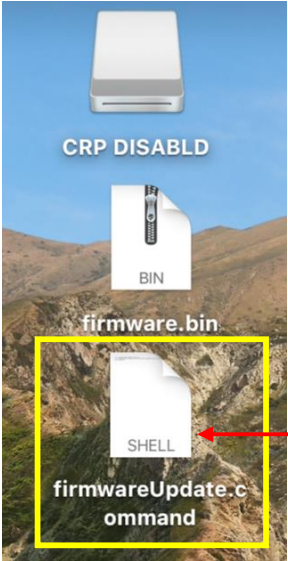
- 1) Delete the “firmware.bin” file in the “CRP DISABLD” device
- 2) Copy new “firmware.bin” file you received into the “CRP DISABLD” device
- 3) AC Power Off / On (Disconnect and connect a Power cable of monitor)
- 4) The "CRP DISABLD" device disappears in This PC and you can see the “USB Controls” or “LG Monitor Controls” device in the below Control Panel (Control Panel → Devices → Bluetooth & other devices → Other devices)



How to update to “USB Controls” from “CRP DISABLD”

- How to update the LG firmware (On Mac OS)

1. Download the “firmware.bin”file & frimwareUpdate.command through LG homepage and shift two file to wallpaper windows of Mac PC
2. Double Click (execute) a “firmwareUpdate.command”
3. Monitor AC Power Off / On (Disconnect and connect a monitor Power cable)
4. You can see the “USB Controls” or “LG Monitor Controls” device in the below Control Panel
 - * Apple Icon → About This Mac → System Report... → USB



Mouse Double Click
(frimwareUpdate.command)