

USER GUIDE

LM-X210ZM

Copyright ©2018 LG Electronics Inc. All rights reserved.

MFL70506402 (1.1)

www.lg.com

About this user guide

Thank you for choosing this LG product. Please carefully read this user guide before using the device for the first time to ensure safe and proper use.

- Always use genuine LG accessories. The supplied items are designed only for this device and may not be compatible with other devices.
- Descriptions are based on the device default settings.
- Default apps on the device are subject to updates, and support for these apps may be withdrawn without prior notice. If you have any questions about an app provided with the device, please contact an LG Service Centre. For user-installed apps, please contact the relevant service provider.
- Modifying the device's operating system or installing software from unofficial sources may damage the device and lead to data corruption or data loss. Such actions will violate your LG licence agreement and void your warranty.
- Some content and illustrations may differ from your device, depending on the area, service provider, software version, or OS version, and are subject to change without prior notice.
- Software, audio, wallpaper, images, and other media supplied with your device are licenced for limited use. If you extract and use these materials for commercial or other purposes, you may be infringing copyright laws. As a user, you are fully responsible for the illegal use of media.
- Additional charges may incur for data services, such as messaging, uploading, downloading, auto-syncing and location services. To void additional charges, select a data plan suitable to your needs. Contact your service provider to obtain additional details.

Instructional notices



WARNING: Situations that could cause injury to the user and third parties.



CAUTION: Situations that may cause minor injury or damage to the device.



NOTE: Notices or additional information.

Table of contents

5	Guidelines for safe and efficient use
---	---------------------------------------

01

Custom-designed Features

13	Multi-tasking feature
14	quick share
15	Gallery features
19	Google Assistant

02

Basic Functions

21	Product components and accessories
22	Parts overview
25	Turning the power on or off
26	Installing the SIM card
28	Inserting the memory card
29	Removing the memory card
29	Battery

33	Touch screen
36	Home screen
45	Screen lock
49	Memory card encryption
50	Taking screenshots
51	Entering text
56	Do not disturb

03

Useful Apps

58	Installing and uninstalling apps
59	App trash
60	App Shortcuts
61	Phone
64	Messaging
65	Camera
72	Gallery
76	Contacts
78	QuickMemo+
80	Clock
81	Calendar

81	Tasks
82	Music
83	Calculator
83	Audio Recorder
84	Email
84	FM Radio
84	File Manager
85	Smart Doctor
85	LG Mobile Switch
85	Downloads
86	SmartWorld
86	RemoteCall Service
87	Cell Broadcast
87	Chrome
87	Google apps

04

Settings

91	Settings
91	Networks
100	Sound & notification
101	Display
102	General

05

Appendix

111	LG Language Settings
111	LG Bridge
112	Phone software update
114	Anti-Theft Guide
115	Open Source Software Notice Information
115	Trademarks
116	DECLARATION OF CONFORMITY
117	More information
118	FAQ

Guidelines for safe and efficient use

Please read these simple guidelines. Not following these guidelines may be dangerous or illegal.

Should a fault occur, a software tool is built into your device that will gather a fault log. This tool gathers only data specific to the fault, such as signal strength, cell ID position in sudden call drop and applications loaded. The log is used only to help determine the cause of the fault. These logs are encrypted and can only be accessed by an authorised LG Repair centre should you need to return your device for repair.

Exposure to radio frequency energy

Radio wave exposure and Specific Absorption Rate (SAR) information.

This device has been designed to comply with applicable safety requirements for exposure to radio waves. These requirements are based on scientific guidelines that include safety margins designed to assure the safety of all persons, regardless of age and health.

- The radio wave exposure guidelines employ a unit of measurement known as the Specific Absorption Rate, or SAR. Tests for SAR are conducted using standardised methods with the device transmitting at its highest certified power level in all used frequency bands.
- While there may be differences between the SAR levels of various LG device models, they are all designed to meet the relevant guidelines for exposure to radio waves.
- The SAR limit recommended by the International Commission on Non-Ionizing Radiation Protection (ICNIRP) is 2 W/kg averaged over 10 g of tissue.
- The highest SAR value for this model tested for use at the ear is 0.763 W/kg (10 g) and when worn on the body is 1.430 W/kg (10 g).
- This device meets RF exposure guidelines when used either in the normal use position against the ear or when positioned at least 5 mm away from the body. When a carry case, belt clip or holder is used for body-worn operation, it should not contain metal and should position the product at least 5 mm away from your body. In order to transmit data files or messages, this device requires a quality connection to the network. In some cases, transmission of data files or messages may be delayed until such a connection is available. Ensure the above separation distance instructions are followed until the transmission is completed.

Product care and maintenance

- Use only in-box accessories which are authorised by LG. LG does not guarantee any damage or failure which is caused by third party accessories.
- Some contents and illustrations may differ from your device without prior notice.
- Do not disassemble this unit. Take it to a qualified service technician when repair work is required.
- Repairs under warranty, at LG's discretion, may include replacement parts or boards that are either new or reconditioned, provided that they have functionality equal to that of the parts being replaced.
- Keep away from electrical appliances such as TVs, radios and personal computers.
- The unit should be kept away from heat sources such as radiators or cookers.
- Do not drop.
- Do not subject this unit to mechanical vibration or shock.
- Switch off the device in any area where you are required to by special regulations. For example, do not use your device in hospitals as it may affect sensitive medical equipment.
- Do not handle the device with wet hands while it is being charged. It may cause an electric shock and can seriously damage your device.
- Do not charge a handset near flammable material as the handset can become hot and create a fire hazard.
- Use a dry cloth to clean the exterior of the unit (do not use solvents such as benzene, thinner or alcohol).
- Do not charge the device when it is on soft furnishings.
- The device should be charged in a well ventilated area.
- Do not subject this unit to excessive smoke or dust.
- Do not keep the device next to credit cards or transport tickets; it can affect the information on the magnetic strips.
- Do not tap the screen with a sharp object as it may damage the device.
- Do not expose the device to liquid or moisture.
- Use accessories like earphones cautiously. Do not touch the antenna unnecessarily.

- Do not use, touch or attempt to remove or fix broken, chipped or cracked glass. Damage to the glass display due to abuse or misuse is not covered under the warranty.
- Your device is an electronic device that generates heat during normal operation. Extremely prolonged, direct skin contact in the absence of adequate ventilation may result in discomfort or minor burns. Therefore, use care when handling your device during or immediately after operation.
- If your device gets wet, immediately unplug it to dry off completely. Do not attempt to accelerate the drying process with an external heating source, such as an oven, microwave or hair dryer.
- Please ensure that the product does not get in contact with liquid. Do not use or recharge the product if it is wet. Once the product becomes wet, the liquid damage indicator changes color. Please note that this will limit you from receiving any free-of-charge repair services provided under warranty.

Efficient device operation

Electronics devices

All devices may receive interference, which could affect performance.

- Do not use your device near medical equipment without requesting permission. Please consult your doctor to determine if operation of your device may interfere with the operation of your medical device.
- Pacemaker manufacturers recommend that you leave at least 15 cm of space between other devices and a pacemaker to avoid potential interference with the pacemaker.
- This device may produce a bright or flashing light.
- Some hearing aids might be disturbed by devices.
- Minor interference may affect TVs, radios, PCs etc.
- Use your device in temperatures between 0 °C and 40 °C, if possible. Exposing your device to extremely low or high temperatures may result in damage, malfunction, or even explosion.

Road safety

Check the laws and regulations on the use of devices in the area when you drive.

- Do not use a hand-held device while driving.
- Give full attention to driving.
- Pull off the road and park before making or answering a call if driving conditions so require.
- RF energy may affect some electronic systems in your vehicle such as car stereos and safety equipment.
- When your vehicle is equipped with an air bag, do not obstruct with installed or portable wireless equipment. It can cause the air bag to fail or cause serious injury due to improper performance.
- If you are listening to music whilst out and about, please ensure that the volume is at a reasonable level so that you are aware of your surroundings. This is of particular importance when near roads.

Avoid damage to your hearing



To prevent possible hearing damage, do not listen at high volume levels for long periods.

Damage to your hearing can occur if you are exposed to loud sound for long periods of time. We therefore recommend that you do not turn on or off the handset close to your ear. We also recommend that music and call volumes are set to a reasonable level.

- When using headphones, turn the volume down if you cannot hear the people speaking near you, or if the person sitting next to you can hear what you are listening to.



- Excessive sound pressure from earphones and headphones can cause hearing loss.

Glass Parts

Some parts of your device are made of glass. This glass could break if your device is dropped on a hard surface or receives a substantial impact. If the glass breaks, do not touch or attempt to remove it. Stop using your device until the glass is replaced by an authorised service provider.

Blasting area

Do not use the device where blasting is in progress. Observe restrictions and follow any regulations or rules.

Potentially explosive atmospheres

- Do not use your device at a refueling point.
- Do not use near fuel or chemicals.
- Do not transport or store flammable gas, liquid or explosives in the same compartment of your vehicle as your device or accessories.

In aircraft

Wireless devices can cause interference in aircraft.

- Turn your device off before boarding any aircraft.
- Do not use it on the ground without permission from the crew.

Children

Keep the device in a safe place out of the reach of small children. It includes small parts which may cause a choking hazard if detached.

Emergency calls

Emergency calls may not be available on all mobile networks. Therefore you should never depend solely on your device for emergency calls. Check with your local service provider.

Battery information and care

- You do not need to completely discharge the battery before recharging. Unlike other battery systems, there is no memory effect that could compromise the battery's performance.
- Use only LG batteries and chargers. LG chargers are designed to maximise the battery life.
- Do not disassemble or short-circuit the battery.
- Keep the metal contacts of the battery clean.
- Replace the battery when it no longer provides acceptable performance. The battery pack may be recharged hundreds of times before it needs replacing.
- Recharge the battery if it has not been used for a long time to maximise usability.
- Do not expose the battery charger to direct sunlight or use it in high humidity, such as in the bathroom.
- Do not leave the battery in hot or cold places, as this may deteriorate battery performance.
- Risk of explosion if battery is replaced by an incorrect type. Dispose of used batteries according to the instructions.
- If you need to replace the battery, take it to the nearest authorised LG Electronics service point or dealer for assistance.
- Always unplug the charger from the wall socket after the device is fully charged to save unnecessary power consumption of the charger.
- Actual battery life will depend on network configuration, product settings, usage patterns, battery and environmental conditions.
- Make sure that no sharp-edged items such as animal's teeth or claws, come into contact with the battery. This could cause a fire.

Securing personal information

- Make sure to protect your personal information to prevent data leakage or misuse of sensitive information.
- Always back up important data while using the device. LG is not responsible for any data loss.
- Make sure to back up all data and reset the device when disposing of the device to prevent any misuse of sensitive information.
- Read the permission screen carefully while downloading applications.
- Be cautious using the applications that have access to multiple functions or to your personal information.
- Check your personal accounts regularly. If you find any sign of misuse of your personal information, ask your service provider to delete or change your account information.
- If your device is lost or stolen, change the password of your account to secure your personal information.
- Do not use applications from unknown sources.



01


Custom-designed Features

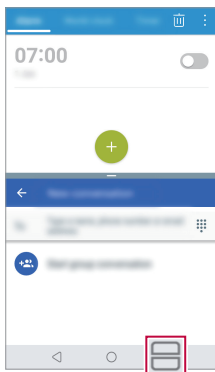
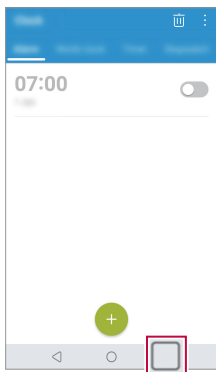
Multi-tasking feature


Multi-Window

You can use two apps at the same time by separating the screen into the multiple windows.

While using an app, touch and hold  from the Home touch buttons, then select an app from the recently-used apps list.

- You can use two apps at the same time.
- To stop the Multi-Window feature, touch and hold .




- To adjust the size of the split screen, drag  at the center of the screen.
- The Multi-Window feature is not supported by some apps, including downloaded apps.

Overview screen



The Overview screen provides a preview of your recently-used apps.

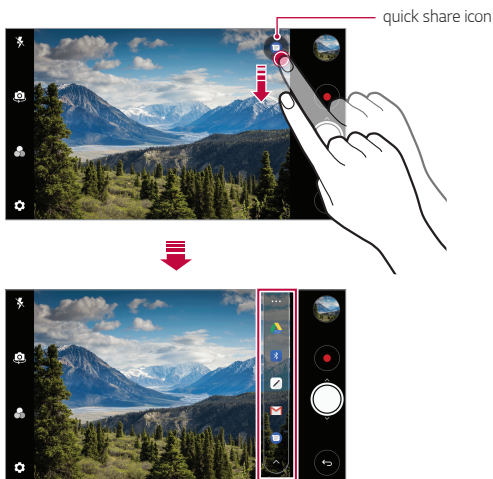
To view the list of recently-used apps, tap  on the Home touch buttons.

- Touch and hold an app and drag it to the top of the screen to start the app with the Multi-Window feature. You can also tap  at the top of each app.

quick share

You can share a photo or video to the app you want immediately after taking it.

- 1 Tap  >  then take a photo or record a video.
- 2 Tap the app icon that appears on the screen to share it using that app. You can also swipe the icon towards the opposite direction to see what other apps you can use to share your photos and videos.



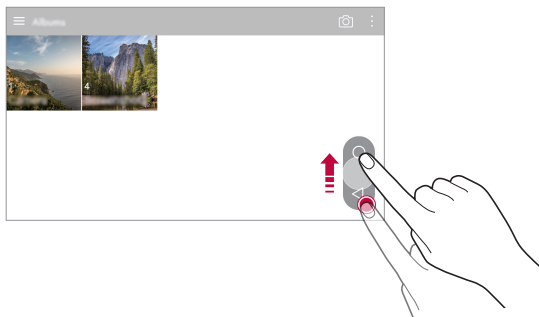
- The app displayed by the quick share icon may vary, depending on the type and frequency of access to the apps installed on the device.
- This feature is available only in specific modes.

Gallery features

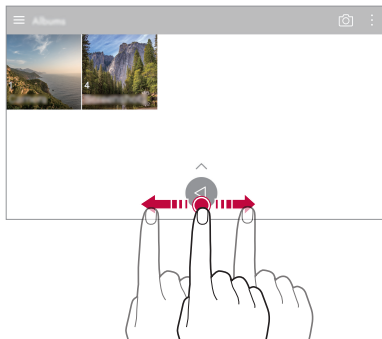
Floating button

You can use the floating button at the lower part of the Gallery app screen in landscape mode.

- After dragging the ◀ button upwards, release it when you reach the ○ button to return to the Home screen.



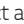


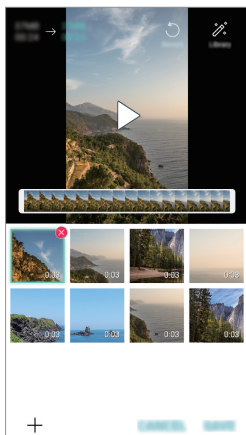
- You can drag the ◀ button to the left or right to move the floating button as desired.




Creating a movie

You can create a new movie by putting images and videos together.


- 1 Tap  > , select an album, and then tap  > **Create movie**.
- 2 Select images or videos for your movie and tap **NEXT**.
- 3 Edit the selected images and videos and then tap **SAVE**.



Deleting files

You can select images or videos to delete from your video by tapping  at the top right corner of its thumbnail.


Adding files

You can select images or videos to add after tapping  at the bottom of the screen. You can also select the images or videos you have already previously added.

Rearranging files

To rearrange the images and videos, touch and hold the file you want to move, then dragging it to the desired location.

Adding file effects


Tap  to add a theme or background music, change the font, and add a title and author.




- Download the VASSET app from the Play Store to add video themes, background music or font faces.

If you use mobile data without connecting to a Wi-Fi network, you may be charged for data usage.

Resetting the movie edits

You can reset the edits made to the movie (e.g. play time) by tapping .

Previewing a file


Check your new video before saving it by tapping . After the playback time elapses, the next file is played automatically.



- A maximum of 50 images and videos can be used to create a video.
- The playback time for an image is 3 seconds by default and it cannot be changed. Videos can be trimmed down to a minimum of 1 second.
- This feature may not support some image or video formats.

Making a GIF


You can easily make a GIF file using previously recorded video.

- 1 At the desired starting point while watching a video, tap .
- 2 Select the length of the GIF you want to create.
 - The GIF file is generated for the time selected from the current time.
 - For videos less than 5 seconds, GIF images are automatically generated for the remaining time.



- You may use this feature solely for creative purposes. The use of this feature involving infringement of any other person's rights, such as copyright or defamatory or offensive statements, may be subject to civil, criminal, or administrative liabilities and/or penalties under applicable laws. You shall not copy, reproduce, distribute, or otherwise make illegal use of any copyrighted materials without permission of the rightful owner or copyright holder. To the fullest extent permitted by applicable law, LG Electronics disclaims all expressed and implied warranties as well as liabilities associated thereto.

You can also create a GIF file from the Gallery.

- 1 While viewing an album, tap  > **Create GIF**.
- 2 Select the desired photos and videos to create a GIF file and then tap **NEXT**.
 - You can add more images and adjust the GIF speed, screen ratio, and file order.
- 3 Tap **SAVE**.



- A maximum of 100 images can be used to create a GIF file.


Google Assistant

You can manage tasks, plan your day, get answers, and much more.



- To use this feature, first connect to the network and sign in to your Google account.


Launching Google Assistant

- 1 Press and hold  from the Home screen to launch **Google Assistant**.
- 2 Tap **GET STARTED**.
- 3 Follow the on-screen instructions to configure the voice settings.
 - The device saves your voice data for recognition.

Launching Google Assistant with your voice

- 1 Say **“Ok Google”** when the screen is locked.
- 2 Say a command or question when *Hi, how can I help?** appears on the screen.

Launching Google Assistant from the Home screen

- 1 Touch and hold  from the Home screen.
- 2 Say a command or question when *Hi, how can I help?** appears on the screen.



- Voice recognition accuracy may decrease if you speak with an unclear voice or in a noisy place. When you use the voice recognition feature, increase its accuracy by speaking with a clear voice in a quiet place.

* The *Hi, how can I help?** message may change depending on the software version.



02

Basic Functions

Product components and accessories

The following items are included with your device.

- Device
- Stereo headset
- USB cable
- Charger
- Quick Start Guide
- Battery

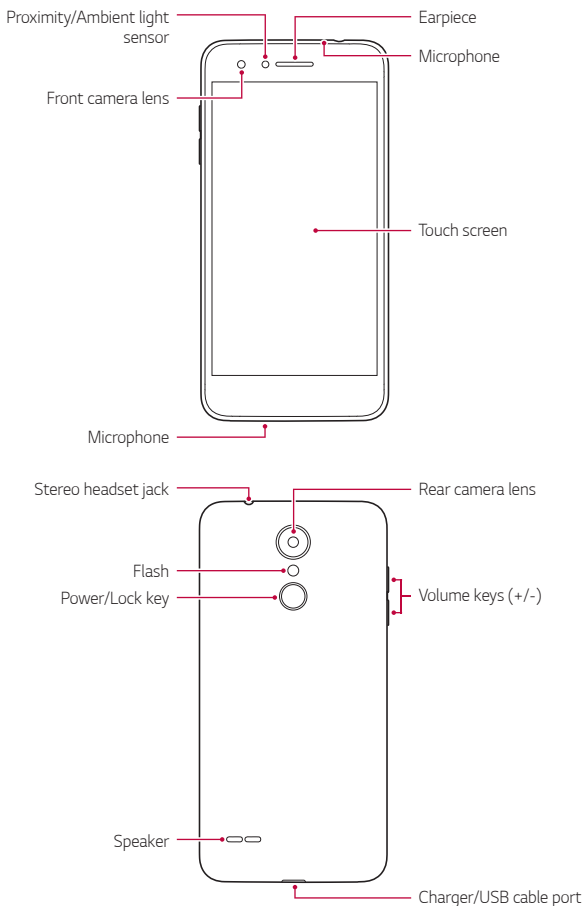


- The items described above may be optional.
- The items supplied with the device and any available accessories may vary depending on the area and service provider.
- Always use genuine LG Electronics accessories. Using accessories made by other manufacturers may affect your device's call performance or cause malfunctions. This may not be covered by LG's repair service.
- Some of the device parts are made of tempered glass. If you drop your device on a hard surface or subject it to severe impact, the tempered glass may be damaged. If this happens, stop using your device immediately and contact an LG Customer Service Centre.



- If any of these basic items are missing, contact the dealer from which you purchased your device.
- To purchase additional items, contact an LG Customer Service Centre.
- Some items in the product box are subject to change without notice.
- The appearance and specifications of your device are subject to change without notice.
- Device specifications may vary depending on the area or service provider.

Parts overview



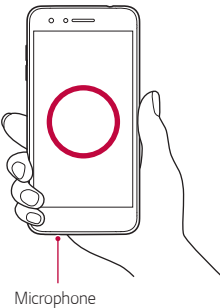
- Proximity/Ambient light sensor
 - Proximity sensor: During a call, the proximity sensor turns off the screen and disables touch functionality when the device is in close proximity to the human body. It turns the screen back on and enables touch functionality when the device is outside a specific range.
 - Ambient light sensor: The ambient light sensor analyses the ambient light intensity when the auto-brightness control mode is turned on.
- Volume keys
 - Adjust the volume for ringtones, calls or notifications.
 - While using the Camera, gently press a Volume key to take a photo. To take continuous shots of photos, press and hold the Volume key.
 - Press the Volume Down (-) key twice to launch the **Camera** app when the screen is locked or turned off. Press the Volume Up (+) key twice to launch **Capture+**.
- Power/Lock key
 - Briefly press the key when you want to turn the screen on or off.
 - Press and hold the key when you want to select a power control option.



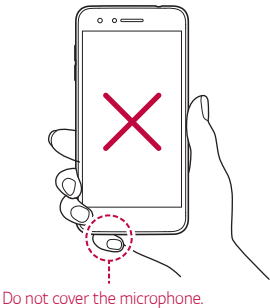
- Some functions may be restricted for access, depending on the device specifications.
- Do not put heavy objects on the device or sit on it. Doing so may damage the touch screen.
- Screen-protective film or accessories may interfere with the proximity sensor.
- If your device is wet or is being used in a humid place, the touch screen or buttons may not function properly.

Hold the device correctly as shown below. If you cover the microphone hole with a hand, finger, or protective case while using the device, you may sound unclear during a call.

Good example



Bad example



Turning the power on or off

Turning the power on

When the power is turned off, press and hold the **Power/Lock key**.



- When the device is turned on for the first time, initial configuration takes place. The first booting time for the smart phone may be longer than usual.

Turning the power off

Press and hold the **Power/Lock key**, then select **Power off**.

Power control options

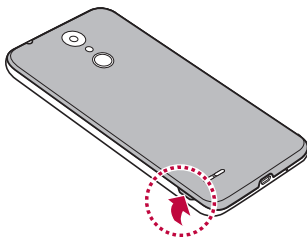
Press and hold the **Power/Lock key**, then select an option.

- **Power off:** Turn the device off.
- **Power off and restart:** Restart the device.
- **Turn on Airplane mode:** Block telecommunication-related functions, including making phone calls, messaging and browsing the Internet. Other functions remain available.

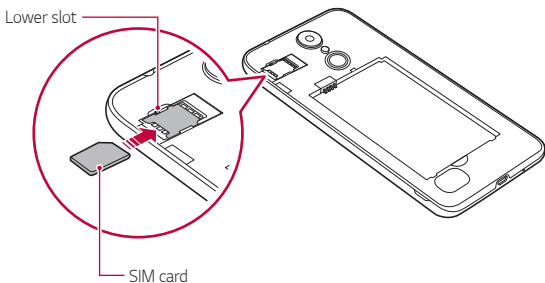
Installing the SIM card

Insert the SIM (Subscriber Identity Module) card provided by your service provider to start using your device.

- 1 To remove the back cover, hold the phone firmly in one hand. With your other hand, lift off the back cover with your thumbnail as shown in the figure below.



- 2 Slide the SIM card into the SIM card slot with the gold-colored contacts facing downwards.





- This device supports only Nano SIM cards.



Micro



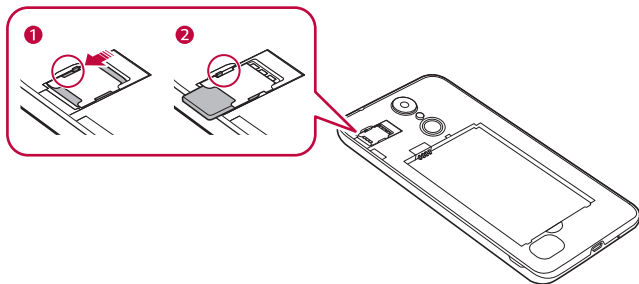
Standard



- For problem-free performance, it is recommended to use the phone with the correct type of SIM card. Always use a factory-made SIM card supplied by the service provider.

To remove the SIM card

Push the pin on the left of the SIM card slot downwards, as indicated in the image below.



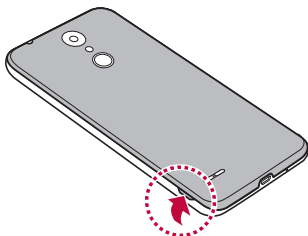
Precautions when using the SIM card

- Do not lose your SIM card. LG is not responsible for damage and other issues caused by loss or transfer of a SIM card.
- Be careful not to damage the SIM card when you insert or remove it.

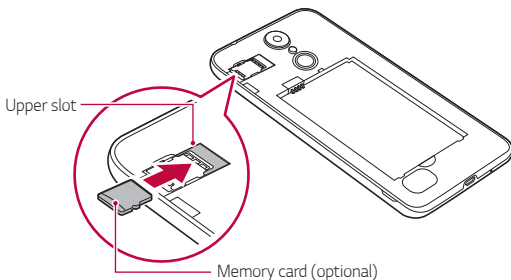
Inserting the memory card

The device can support up to a 32 GB microSD card. Depending on the memory card manufacturer and type, some memory card may not be compatible with your device.

- 1 To remove the back cover, hold the phone firmly in one hand. With your other hand, lift off the back cover with your thumbnail as shown in the figure below.



- 2 Insert the memory card into the memory card slot.





- Some memory cards may not be fully compatible with the device. If you use an incompatible card, it may damage the device or the memory card, or corrupt the data stored in it.



- Frequent writing and erasing of data may shorten the memory card lifespan.

Removing the memory card

Unmount the memory card before removing it for safety.

- 1 Tap  > **Settings** > **General** > **Storage** > .
- 2 Remove the back cover and pull out the memory card.

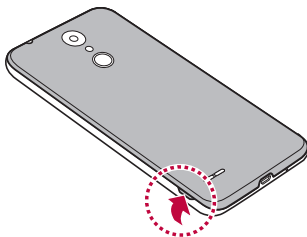


- Do not remove the memory card while the device is transferring or accessing information. This may cause data to be lost or corrupted, or may damage the memory card or the device. LG is not responsible for losses that result from the abuse or improper use of memory cards, including the loss of data.

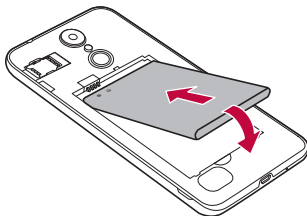
Battery

Installing the battery

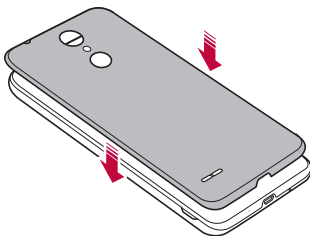
- 1 To remove the back cover, hold the phone firmly in one hand. With your other hand, lift off the back cover with your thumbnail as shown in the figure below.



2 Insert the battery.



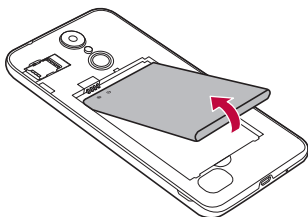
3 To replace the cover onto the device, align the back cover over the battery compartment and press it down until it clicks into place.



- Follow the instructions in this user guide cautiously when handling the device. Failure to do so may damage the device or cause injury to yourself or others.

Removing the battery

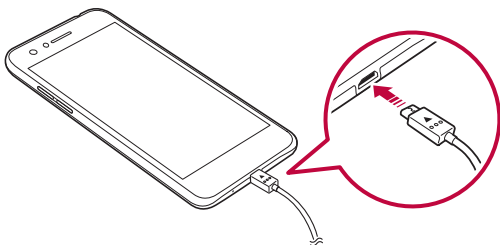
Open the back cover and pull out the battery.



- Turn off the device before removing the battery. Failure to do so may damage the device.

Charging the battery

Before using the device, fully charge the battery.





- Do not use the external terminal, charging cable or gender for the device in presence of moisture. This may cause fire, electric shock, injury, or device malfunction. If there is moisture, stop using the device immediately and remove the moisture completely.
- Make sure to use the USB cable provided with your device.
- Make sure to use an LG-approved charger and charging cable. Charging the battery with a third-party charger may cause the battery to explode or may damage the device.
- Using the device when it is charging may cause electric shock. To use the device, stop charging it.



- Remove the charger from the power socket after the device is fully charged. This prevents unnecessary power consumption.

Precautions when using the device

- When replacing the battery, take extra care to ensure that no foreign substances or water enter the device.
- Ensure that the inside of the device does not make contact with a metallic object or water.
- Make sure to use the USB cable provided; do not use third party USB cables or chargers with your device. The LG limited warranty does not cover the use of third party accessories.
- Failure to follow the instructions in this guide and improper use may damage the device.

Using the battery efficiently

Battery lifespan may decrease if you keep many apps and functions running simultaneously and continuously.

Stop apps and functions from running in the background to increase battery life.

To minimise battery consumption, follow these tips:

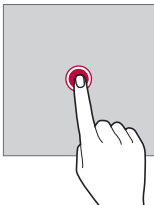
- Turn off the **Bluetooth®** or Wi-Fi network function when not using them.
- Set the screen timeout to as short a time as possible.
- Minimise the screen brightness.
- Set a screen lock when the device is not used.
- Check the battery level while using any downloaded apps that are draining the battery.

Touch screen

You can familiarise yourself with how to control your device by using touch screen gestures.

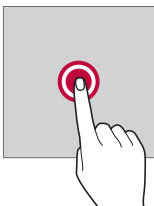
Tapping

Lightly tap with your fingertip to select or run an app or option.



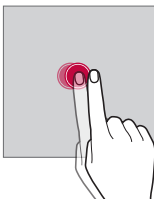
Touching and holding

Touch and hold for several seconds to display a menu with available options.



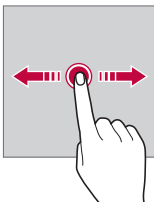
Double-tapping

Tap twice quickly to zoom in or out on a web page or map.



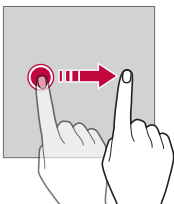
Dragging

Touch an item, such as an app or widget, then move your finger to another location in a controlled motion. You can use this gesture to move an item.



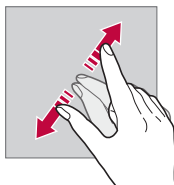
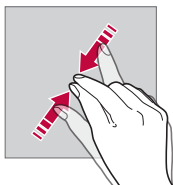
Swiping

Touch the screen with your finger and move it quickly without pausing. You can use this gesture to scroll through a list, a web page, photos, screens, and more.



Pinching and spreading

Pinch two fingers to zoom out such as on a photo or map. To zoom in, spread your fingers apart.




- Do not expose the touch screen to excessive physical shock. You might damage the touch sensor.



- A touch screen failure may occur if you use the device near a magnetic, metallic or conductive material.
- If you use the device under bright lights, such as direct sunlight, the screen may not be visible, depending on your position. Use the device in a shady location or a location with an ambient light that is not too bright and bright enough to read books.
- Do not press the screen with excessive force.
- Gently tap with your fingertip on the option you want.
- Touch control may not work properly if you tap while wearing a glove or by using the tip of your fingernail.
- Touch control may not work properly if the screen is moist or wet.
- The touch screen may not function properly if a screen-protective film or accessory purchased from a third party store is attached to the device.
- Displaying a static image for extended periods of time may result in after-images or screen burn-in. Turn off the screen or avoid displaying the same image for a long time when you do not use the device.

Home screen

Home screen overview

The Home screen is the starting point for accessing various functions and apps on your device. Tap  on any screen to directly go to the Home screen.

You can manage all apps and widgets on the Home screen. Swipe the screen left or right to view all installed apps at a glance.

Home screen layout

You can view all apps and organise widgets and folders on the Home screen.



- The Home screen may differ depending on the manufacturer policy, user settings, software version or service provider.

- **Status bar:** View status icons, the time and the battery level.
- **Weather widget:** View the information of weather and time for a specific area.
- **Google search widget:** Perform a Google search by inputting spoken or written keywords.
- **Folder:** Create folders to group apps by your preferences.
- **Page icon:** Display the total number of Home screen canvases. You can tap the desired page icon to go to the page you selected. The icon reflecting the current canvas will be highlighted.
- **Quick access area:** Fix main apps at the bottom of the screen so that they can be accessed from any Home screen canvas.

- **Home touch buttons**

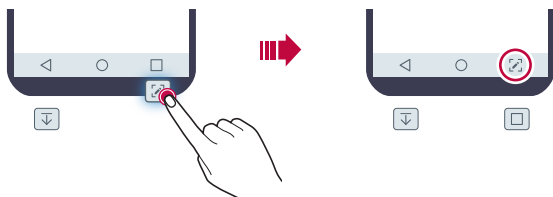
- ◀: Return to the previous screen. Close the keypad or pop-up windows.
- ○: Tap to go to the Home screen. To launch Google search, touch and hold.
- □: Tap to view a list of recently used apps or run an app from the list. To delete all the recently used apps, tap **CLEAR ALL**. To use two apps at the same time with the Multi-Window feature, touch and hold the button while using an app.

Editing the Home touch buttons

You can rearrange the Home touch buttons or add frequently used functions to the Home touch buttons area.















Tap ○ > **Settings** > **Display** > **Home touch buttons** > **Button combination** and customise the settings.

- Several functions, including **Notification** and **Capture+**, are provided. A maximum of one additional item can be added.



Status icons

When there is a notification for an unread message, calendar event or alarm, the status bar displays the corresponding notification icon. Check your device's status by viewing notification icons displayed on the status bar.


	No signal
	Data is being transmitted over the network
	Alarm is set
	Vibrate mode is on
	Bluetooth is on
	Connected to a computer via USB
	Battery level
	Airplane mode is on
	Missed calls
	Wi-Fi is connected
	Mute mode is on
	GPS is on
	Hotspot is on
	No SIM card

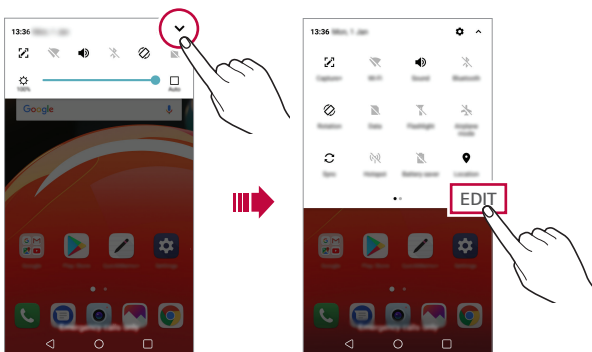


- Some of these icons may appear differently or may not appear at all, depending on the device's status. Refer to the icons according to the actual environment and area in which you are using the device and your service provider.
- Displayed icons may vary, depending on the area or service provider.

Notifications panel

You can open the notifications panel by dragging the status bar downward on the main screen.

- To open the quick access icons list, drag the notifications panel downwards or tap .
- To rearrange, add, or remove icons, tap **EDIT**.
- If you touch and hold the icon, the settings screen for the corresponding function appears.



- You can use the notifications panel even on the lock screen. Drag the notifications panel while the screen is locked to quickly access the desired features.

Switching the screen orientation

You can set the screen orientation to automatically switch according to the device's physical orientation.

On the notification panel, tap **Rotation** from the quick access icon list.

You can also tap  > **Settings** > **Display** and activate **Auto-rotate screen**.




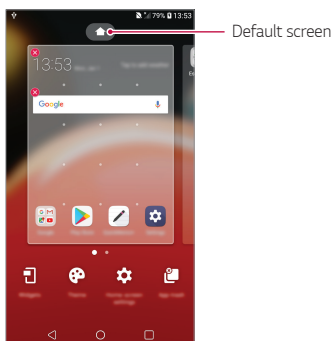
Editing the Home screen

On the Home screen, touch and hold on an empty space, then select the desired action from below.

- To rearrange the Home screen canvases, touch and hold on a canvas, then drag it to another location.
- To add a widget to the Home screen, touch and hold on a blank area of the Home screen, then select **Widgets**.
- To change a theme, touch and hold on a blank area of the Home screen, then select **Theme**.

You can also tap  > **Settings** > **Display** > **Theme**, then select a theme to apply to the device.

- To configure the Home screen settings, touch and hold on a blank area of the Home screen, then select **Home screen settings**. See *Home screen settings* for details.
- To view or reinstall the uninstalled apps, touch and hold on a blank area of the Home screen, then select **App trash**. See *App trash* for details.
- To change the default screen, touch and hold on a blank area of the Home screen, move to desired screen, tap , then tap the screen once more.

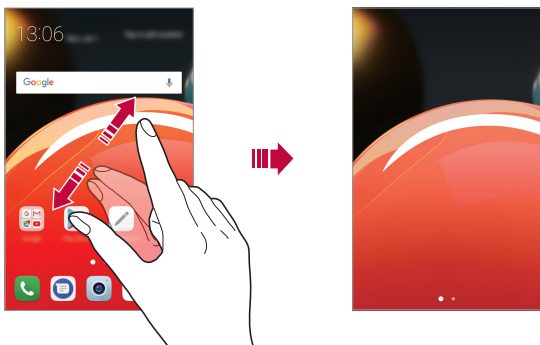


Viewing the background theme

You can view only the background image by hiding the apps and widgets on the Home screen.

Spread two fingers apart on the Home screen.

- To return to the original screen, which displays apps and widgets, pinch your fingers on the Home screen or tap ◀.



Moving apps on the Home screen

On the Home screen, touch and hold an app, then drag it to another location.

- To keep frequently used apps at the bottom of the Home screen, touch and hold an app, then drag it to the quick access area at the bottom.
- To remove an icon from the quick access area, drag the icon to the Home screen.

Using folders from the Home screen

Creating folders

On the Home screen, touch and hold an app, then drag it over another app.

- A new folder is created and the apps are added to the folder.

Editing folders

On the Home screen, tap a folder and do one of the following actions.

- To edit the folder name and colour, tap the folder name.
- To add apps, touch and hold an app, then drag it over the folder and release it.
- To remove an app from the folder, touch and hold the app and drag it to outside the folder. If there is only one app remaining in the folder, the folder is removed automatically.
- You can also add or remove apps after tapping **+** in the folder.



- You cannot change the folder colour while using downloaded theme.

Home screen settings

You can customise the Home screen settings.

- 1 Tap **○ > Settings > Display > Home screen**.
- 2 Customise the following settings:
 - **Select Home:** Select a Home screen mode.
 - **Wallpaper:** Change the Home screen background wallpaper.
 - **Screen swipe effect:** Select an effect to apply when the Home screen canvas switches.
 - **Icon shape:** Choose if you want icons to have square or rounded corners.
 - **Sort apps by:** Set how apps are sorted on the Home screen.
 - **Grid:** Change the app arrangement mode for the Home screen.

- **Hide apps:** Select which apps you want to hide from the Home screen.
- **Loop Home screen:** Enable to allow continuous Home screen scrolling (loop back to first screen after the last screen).
- **Search:** Search by swiping down on the Home screen.

Screen lock

Screen lock overview

Your device's screen turns off and locks itself if you press the Power/Lock key. This also happens after the device is left idle for a specified period of time.

If you press the Power/Lock key when a screen lock is not set, the Home screen appears immediately.

To ensure security and prevent unwanted access to your device, set a screen lock.



- A screen lock prevents unnecessary touch input on the device screen and reduces battery consumption. We recommend that you activate the screen lock while not using the device.

Setting a screen lock

There are several options available for configuring the screen lock settings.

- 1 Tap > **Settings** > **Display** > **Lock screen** > **Select screen lock** and then select the method you prefer.
- 2 Customise the following settings:
 - **None:** Deactivate the screen lock function.
 - **Swipe:** Swipe on the screen to unlock the screen.
 - **Pattern:** Draw a pattern to unlock the screen.
 - **PIN:** Enter a numeric password to unlock the screen.
 - **Password:** Enter an alphanumeric password to unlock the screen.

Secure start-up settings

When you select Pattern, PIN or Password as a screen lock method, you can configure your device to be locked whenever turning on the device in order to secure your data.


- You cannot use all functions, except for emergency calls until you unlock the device.
- If you forget your decryption password, you cannot restore encrypted data and personal information.

Precautions for the secure start-up feature

- If you forget your decryption password, you cannot restore encrypted data and personal information.
- Be sure to keep your screen lock passwords separately.
- If you enter the screen lock passwords incorrectly more than the specified times, the device automatically resets itself and the encrypted data and your personal information are deleted automatically and they cannot be restored.
- Be cautious not to enter incorrect screen lock passwords more than the specified times.
- When you turn on the device right after the device reboots, encryption also starts. If you stop the encryption arbitrarily, the data may be damaged. Be sure to wait until the reboot is completed.

Lock screen settings

You can customise the following lock screen settings.

- 1 Tap  > **Settings** > **Display** > **Lock screen**.
- 2 Customise the following settings:
 - **Select screen lock:** Select a screen lock method.
 - **Smart Lock:** Select trusted items so that if you are connected to or near one, the device is automatically unlocked.
 - **Wallpaper:** Change the lock screen background wallpaper.
 - **Clock:** Select the position of the clock on the locked screen.
 - **Shortcuts:** Add an app shortcut and directly access the app from the lock screen by dragging the app shortcut on the screen.
 - **Screen swipe effect:** Set screen transition effects to apply when the screen is unlocked.
 - **Contact info for lost phone:** Display emergency contact information on the lock screen.
 - **Lock timer:** Set the amount of idle time after which the device automatically locks.
 - **Power key instantly locks:** Instantly lock the screen when the Power/Lock key is pressed.



- Available setting items may vary, depending on the selected screen lock method.

KnockON

You can turn the screen on or off by double-tapping the screen.



- This option is available only on the Home screen provided by LG. It may not function properly on a custom launcher or on the Home screen installed by the user.
- When tapping the screen, use your fingertip. Do not use a fingernail.
- To use the KnockON feature, make sure that the proximity/light sensor is not blocked by a sticker or any other foreign substance.

Turning the screen on

Double-tap the middle of the screen.

- Tapping the top or bottom of the screen may decrease the recognition rate.

Turning the screen off

Double-tap on an empty space on the Home screen and Lock screen.

You can also double-tap an empty space on the status bar.

Memory card encryption

You can encrypt and protect data saved on the memory card. The encrypted data in the memory card cannot be accessed from another device.

- 1 Tap  > **Settings** > **General** > **Security** > **Encrypt SD card**.
- 2 Read the on-screen overview of memory card encryption and then tap **CONTINUE** to continue.
- 3 Select an option and tap **ENCRYPT NOW**.
 - **New data encryption:** Encrypt only data that is saved on the memory card after encryption.
 - **Full encryption:** Encrypt all the data currently saved on the memory card.
 - **Exclude media files:** Encrypt all files, except for media files such as music, photos and videos.



- To encrypt the memory card, make sure that a screen lock is set using a PIN or password.
- Once memory card encryption starts, some functions are not available.
- If the device is turned off while encryption is underway, the encryption process will fail, and some data may be damaged. Therefore, be sure to check if the battery level is sufficient before starting encryption.
- Encrypted files are accessible only from the device where the files were encrypted.
- The encrypted memory card cannot be used on another LG device. To use the encrypted memory card on another mobile device, format the card.
- You can activate memory card encryption even when no memory card is installed into the device. Any memory card that is installed after encryption will automatically be encrypted.

Taking screenshots


You can take screenshots of the current screen you are viewing.

Via a shortcut


Press and hold the Power/Lock key and the Volume Down (-) key at the same time for at least two seconds.

- Screenshots can be viewed from the **Screenshots** folder in the **Gallery**.

Via Capture+

On the screen where you want to take a screenshot, drag the status bar downwards, then tap .



- When the screen is turned off or locked, you can access **Capture+** by pressing the Volume Up (+) key twice. To use this feature, tap  **Settings** > **General** and turn on **Shortcut keys**.
- See *Writing notes on a screenshot* for details.

Entering text

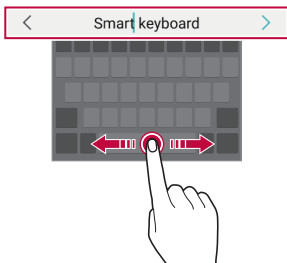
Using the Smart keyboard

You can use the Smart keyboard to enter and edit text.

With the Smart keyboard, you can view text as you type without bothering to alternate between the screen and a conventional keyboard. This allows you to easily find and correct errors when typing.

Moving the cursor

With the Smart keyboard, you can move the cursor to the exact position you want. When typing text, touch and hold on the space bar and then drag left or right.



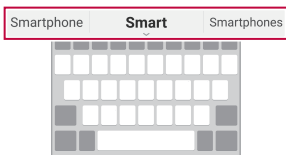
- This option is available only on the QWERTY keyboard.

Suggesting words

Smart keyboard automatically analyses your usage patterns to suggest frequently used words as you type. The longer you use your device, the more precise the suggestions are.


Enter text, then tap a suggested word.

- The selected word is automatically entered. You do not need to manually type every letter of the word.



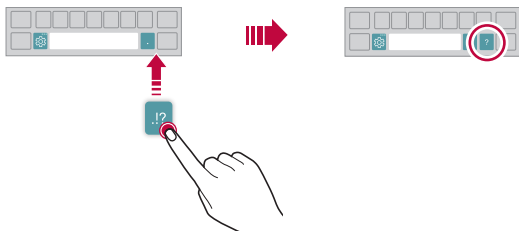
Changing the QWERTY keyboard layout

You can add, delete or rearrange keys on the bottom row of the keyboard.

- 1 Tap  > **Settings** > **General** > **Language & keyboard** > **LG Keyboard** > **Keyboard height and layout** > **QWERTY keyboard layout**.

You can also tap  on the keyboard and tap **Keyboard height and layout** > **QWERTY keyboard layout**.

- 2 Tap a key on the bottom row, then drag it to another position.






- This option is available on the QWERTY, QWERTZ and AZERTY keyboards.
- This function may not be supported for some languages.

Customising the keyboard height

You can customise the keyboard height to maximise hand comfort when typing.

- 1 Tap  > **Settings** > **General** > **Language & keyboard** > **LG Keyboard** > **Keyboard height and layout** > **Keyboard height**.

You can also tap  on the keyboard and tap **Keyboard height and layout** > **Keyboard height**.

- 2 Adjust the keyboard height.



Selecting a landscape keyboard mode

You can select a landscape keyboard mode from several choices.

- 1 Tap  > **Settings** > **General** > **Language & keyboard** > **LG Keyboard** > **Keyboard height and layout** > **Keyboard type in landscape**.

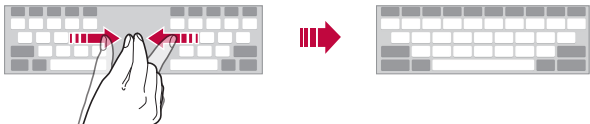
You can also tap  on the keyboard and tap **Keyboard height and layout** > **Keyboard type in landscape**.

- 2 Select a keyboard mode.

Splitting the keyboard


You can split the keyboard in half and place each piece on either side of the screen when the screen is in landscape mode.

To split the keyboard, turn the device horizontally and spread it apart on both sides with holding the keyboard with two fingers. To attach the keyboard, close it with pressing with two fingers.



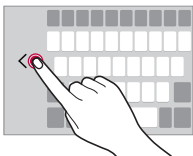
One-handed operation mode

You can move the keyboard to one side of the screen so that you can use the keyboard with one hand.

- 1 Tap  > **Settings** > **General** > **Language & keyboard** > **LG Keyboard** > **Keyboard height and layout** > **One-handed operation**.


You can also tap  on the keyboard and tap **Keyboard height and layout** > **One-handed operation**.

- 2 Press the arrow displayed next to the keyboard to move the keyboard in the desired direction.





Adding languages to the keyboard

You can make additional languages available for keyboard input.

- 1 Tap  > **Settings** > **General** > **Language & keyboard** > **LG Keyboard** > **Select languages**.
- 2 Select the languages you want to make available.

Copy and Paste


You can cut or copy text from an app, and then paste the text into the same app. Or you can run other apps and paste the text into them.

- 1 Touch and hold around the text you want to copy or cut.
- 2 Drag  /  to specify the area to copy or cut.
- 3 Select either **CUT** or **COPY**.
 - Cut or copied text is automatically added to the clipboard.
- 4 Touch and hold the text input window, then select **PASTE**.




- If there is no item that has been copied or cut, the **PASTE** option will not appear.

Entering text by using voice





On the keyboard, touch and hold  and then select .



- To maximise the voice command recognition, speak clearly.
- To enter text with your voice, make sure that your device is connected to a network.
- To select the language for voice recognition, tap  > **Languages** on the voice recognition screen.
- This function may be not supported, or the supported languages may differ depending on the service area.

Clip Tray

If you copy or cut an image or text, it is automatically saved to the clip tray and can be pasted to any space at any time.


- 1 On the keyboard, touch and hold  and select .
You can also touch and hold the text input window, then select **Clip Tray**.
- 2 Select and paste an item from the clip tray.
 - A maximum of 20 items can be saved to the clip tray.
 - Tap  to lock saved items in order not to delete them, even when the maximum quantity is exceeded. A maximum of ten items can be locked. To delete locked items, unlock them first.
 - Tap  to delete the items saved to the clip tray.



- The clip tray may not be supported by some downloaded apps.

Do not disturb

You can limit or mute notifications to avoid disturbances for a specific period of time.

- 1 Tap  > **Settings** > **Sound & notification** > **Do not disturb**.
- 2 Tap **Mode** and select the desired mode.
 - **Priority only**: Receive sound or vibrate notifications for the selected apps. Even when Priority only is turned on, alarms still sound.
 - **Total silence**: Disable both the sound and vibration.



03

Useful Apps

Installing and uninstalling apps

Installing apps

Access an app store to search and download apps.

- You can use SmartWorld, Play Store or the app store provided by your service provider.



- Some app stores may require you to create an account and sign in.
- Some apps may charge fees.
- If you use mobile data, you may be charged for data usage, depending on your pricing plan.
- SmartWorld may not be supported depending on the area or service provider.

Uninstalling apps

Uninstall apps that you no longer use from your device.

Uninstalling with the touch and hold gesture

On the Home screen, touch and hold the app to uninstall, then drag it over **Delete** at the top of the screen.

- Uninstalled apps can be reinstalled within 24 hours of uninstallation. See [App trash](#) for details.

Uninstalling by using the settings menu

Tap **○** > **Settings** > **General** > **Apps**, select an app, then tap **Uninstall**.

Uninstalling apps from the app store

To uninstall an app, access the app store from which you download the app and uninstall it.



- Some apps cannot be uninstalled by users.

Installing and uninstalling apps during the setup

When you turn on the device for the first time, you can download recommended apps.

You can skip to the next step without installation.


App trash

You can view the uninstalled apps on the Home screen. You can also reinstall apps within 24 hours of uninstallation.

- 1 Tap  > **Management** > **App trash**.

Alternatively, you can also touch and hold an empty area of the Home screen, then tap **App trash**.

- 2 Activate the desired function:

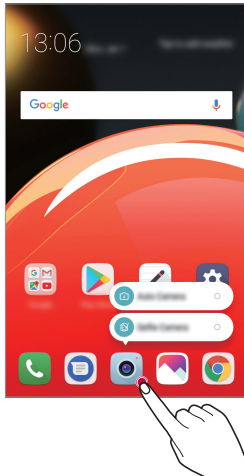
- **Restore**: Reinstall the selected app.
-  : Remove the uninstalled apps permanently from the device.



- Uninstalled apps are automatically removed from the device 24 hours after they were uninstalled. If you want to reinstall the uninstalled apps, you must download them again from the app store.
- This feature is activated on the default Home screen only. If you uninstall apps while using the EasyHome screen or other launcher, they are immediately and permanently removed from the device.

App Shortcuts

On the Home screen, touch and hold an app icon such as Phone, Message, Camera, Gallery and Settings to display a quick access menu. Use apps more easily through App Shortcuts.







- This feature is available only on some apps.

Phone

Voice call

Make a phone call by using one of the available methods, such as manually entering a phone number and making a call from the contact list or the list of recent calls.




Making a call from the keypad

- 1 Tap  >  > **Dial**.
- 2 Make a call by using a method of your choice:
 - Enter a phone number and tap .
 - Touch and hold a speed dial number.
 - Search for a contact by tapping the initial letter of a contact name in the contact list, and then tap .




- To enter "+" when making an international call, touch and hold number 0.
- See [Adding contacts](#) for details on how to add phone numbers to the speed dial list.

Making a call from the contact list

- 1 Tap  >  > **Contacts**.
- 2 From the contact list, select a contact and tap .



Answering a call

To answer a call, drag  across the incoming call screen.

- When the stereo headset is connected, you can make calls by using the call/end button on the headset.
- To end a call simply by pressing the Power/Lock key, tap  > **Settings** > **Networks** > **Call** > **Answer and end calls** and then activate **End call with the Power key**.

Rejecting a call

To reject an incoming call, drag  across the incoming call screen.

- To send a rejection message, drag the rejection message option  across the screen.
- To add or edit a rejection message, tap  > **Settings** > **Networks** > **Call** > **Call blocking & Decline with message** > **Decline with message**.
- When a call is coming in, press the Volume Up (+), Volume Down (-) or Power/Lock key to mute ringtone or vibration, or to hold the call.


Viewing missed calls

If there is a missed call, the status bar at the top of the screen displays .

To view missed call details, drag the status bar downwards. You can also tap  >  > **Call logs**.

Functions accessible during a call

During a call, you can access a variety of functions by tapping the on-screen buttons:


- **Hold:** Place the current call on hold.
- **Video Call:** Start a video call (if supported).
- **Contacts:** View the contact list during a call.
- **End:** End a call.
- **Dialpad:** Display or hide the dial pad.
- **Speaker:** Turn on the speakerphone function.
- **Mute:** Mute your voice so that your voice cannot be heard by the other party.
- **Bluetooth:** Switch the call to a Bluetooth device that is paired and connected.
-  : Access additional call options.



- Available settings items may vary depending on the area or service provider.

Making a three-way calling

You can make a call to another contact during a call.


- 1 During a call, tap **:** > **Add call**.
- 2 Enter a phone number and tap .
 - The two calls are displayed on the screen at the same time, and the first call is put on hold.
- 3 To start a conference call, tap **Merge calls**.



- You may be charged a fee for each call. Consult with your service provider for more information.

Viewing call records

To view recent call records, tap  > **Call logs**. Then, you can use the following functions:


- To view detailed call records, select a contact. To make a call to the selected contact, tap .
- To delete call records, tap **:** > **Delete**.



- The displayed call duration may differ from the call charge. Consult with your service provider for more information.

Configuring call options

You can configure various call options.

- 1 Tap  > **Dial** or **Call logs**.
- 2 Tap **:** > **Call settings** and then configure the options to suit your preferences.

Messaging

Sending a message

You can create and send messages to your contacts using the Messaging app.



- Sending messages abroad may incur additional charges. Consult with your service provider for more information.

- 1 Tap > .
- 2 Tap .
- 3 Specify a recipient and create a message.
 - To use multimedia options, tap .
 - To access optional menu items, tap .
- 4 Tap to send the message.

Reading a message

You can view exchanged messages organised by contact.

- 1 Tap > .
- 2 Select a contact from the message list.

Configuring messaging settings

You can change messaging settings to suit your preferences.

- 1 Tap > .
- 2 Tap > **Settings** from the message list.

Camera

Starting the camera

You can take a photo or record a video to cherish all of your memorable moments.

Tap .



- Before taking a photo or recording a video, wipe the camera lens with a soft cloth.
- Be careful not to stain the camera lens with your fingers or other foreign substance.
- Images included in this user guide may be different from the actual device.
- Photos and videos can be viewed or edited from the Gallery. See [Gallery overview](#) for details.

Turn the flash on or off.

Switch between front and rear cameras.

Apply a film filter effect.

Change the camera options.




Start the Gallery.

Record videos.


Take photos.

Back to the previous screen.






Taking a photo

- 1 Select a camera mode and tap the subject to focus the camera on.
- 2 Tap  to take a photo.
 - You can also press the Volume Down (-) or Volume Up (+) key to take a photo.




- When the screen is turned off or locked, start the camera by pressing the Volume Down (-) key twice. Tap  > **Settings** > **General** > **Shortcut keys**.

Recording a video

- 1 Select a camera mode and tap the subject to focus the camera on.
- 2 Tap .
 - To take a photo while recording a video, tap .
 - To pause the video recording, tap . To resume the video recording, tap .
- 3 Tap  to end the video recording.

Customising the camera options

You can customise a variety of camera options to suit your preferences. Tap  on the screen.



- Available options vary depending on the selected camera (front or rear camera) and the selected camera mode.

Photo size	Select the aspect ratio and size for your photos.
Video resolution	Select the resolution and size for your videos.
HDR	Obtain photos in vivid colours and get compensated effects even when they are taken against the light. These functions are provided by the high dynamic range (HDR) technology equipped in the camera.
Timer	Set the timer to automatically take photos after a specified period of time.
Cheese shutter	Take photos with voice commands.
Tag locations	Save the image with GPS location data.
Grid	Display guide grids so that you can take photos or record videos based on the horizontal and vertical reference lines.
Storage	Select if you want to store the pictures and videos in the Internal storage or SD card. (Available when the memory card is inserted.)
Simple view	Hide all menus from the camera screen.

Additional options on the front camera

Selfie shot	Customize the selfie shot settings. <ul style="list-style-type: none"> • Gesture shot: Take a photo using the Gesture shot feature. • Auto shot: Take a photo when the camera detects a face.
Gesture view	Allows you to view the photo immediately after taking a photo.
Save as flipped	Save as flipped images after taking selfies.

Burst shot

You can take continuous shots of photos to create moving pictures.



Touch and hold .

- Continuous shots are taken at a fast speed while  is held down.



- You can take up to 30 photos.


Simple view

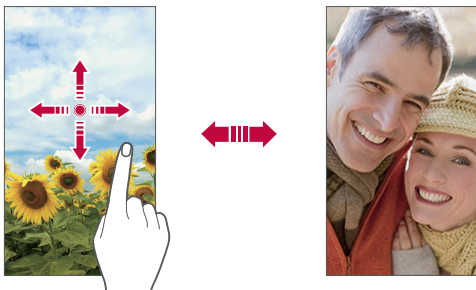
Tap  > **Simple view** to hide menus on the camera screen. Tap  to display them.

Other useful features in the Camera app

Switching between cameras

You can switch between the front and rear cameras to suit your environment.


On the camera screen, tap  or swipe the screen in any direction to switch between the front and rear cameras.



- Use the front camera to take selfies. See [Selfie shot](#) for details.

Zoom in or out

You can use zoom in or out on the camera screen while taking a photo or recording a video.

- On the camera screen, pinch or spread two fingers to zoom in or out, then use the displayed +/- slide bar.
- You can also drag the  button up or down. This feature is available only in specific modes.



- The zoom feature is not available when using the front camera in selfie mode.

Selfie shot

You can use the front camera to take selfies.

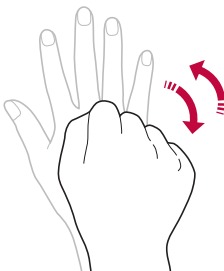
Gesture shot

You can take selfies by using gestures.


Show your palm to the front camera and then clench your fist.

You can also clench your fist and then open it towards the front camera.

- In three seconds, a photo is taken.



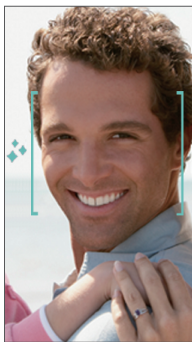


- To use this feature, switch to the front camera mode, then tap  > **Selfie shot > Gesture shot**.
- Make sure that your palm and fist are within the reference line so that the camera can detect them.
- This feature may not be available while using some of the camera features.

Auto shot

You can use the face detection feature to take selfies easily and conveniently. You can set the device so that, when you look at the screen, the front camera detects your face and takes a selfie automatically.

- The white coloured guide frame appears when the front camera detects your face. If the subject within the guide frame stops moving, the guide frame colour turns blue, then the camera takes a photo.



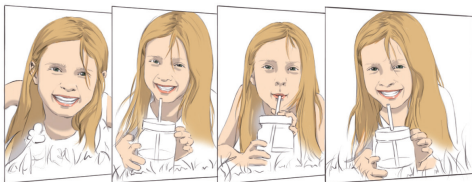
- Tap  > **Selfie shot > Auto shot** to enable the Auto shot feature.

Interval shot

You can take selfies at an interval.

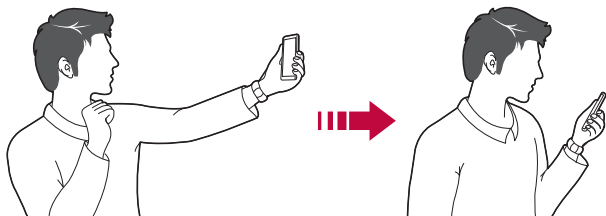
While using the front camera with the Gesture shot mode selected, show your palm to the camera, then clench your fist twice quickly.


- Four photos are taken at about two second intervals.




Gesture view

After taking a selfie with the front camera, you can preview the selfie immediately by placing the screen close to your face.



- Tap  > **Gesture view** to enable the Gesture view feature.
- Only one preview is available each time a photo is taken.
- If you rotate the device while in preview screen, the screen switches to camera mode.

Save as flipped

Before taking a photo with the front camera, tap  > **Save as flipped**. The image is flipped horizontally.





- When using the front camera, you can change how selfies are taken in the camera options. See *Customising the camera options* for details.

Gallery

Gallery overview

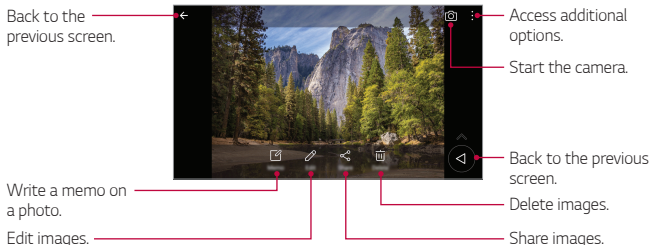
You can view and manage photos and videos saved on your device.

- 1 Tap  > .
- Saved photos and videos are displayed by folder.
- 2 Tap a folder and select a file.
 - View the selected file in full-screen mode.
 - While viewing a photo, swipe left or right to view the previous or next photo.
 - While viewing a video, swipe left or right to rewind or fast-forward the video.



- Some file formats may not be supported, depending on the installed software.
- Some files may not be opened due to encoding.
- Files that exceed the size limit may cause an error.

Viewing photos




- To display the menu items, gently tap the screen. To hide the menu items, tap the screen again.

Floating button

While viewing the Gallery app in landscape mode, you can use the floating button. See *Floating button* for details.



Writing a memo on the photo

- 1 While viewing a photo, tap .
- 2 Write a memo on the photo and tap **SAVE**.
 - The memo is applied to the photo.

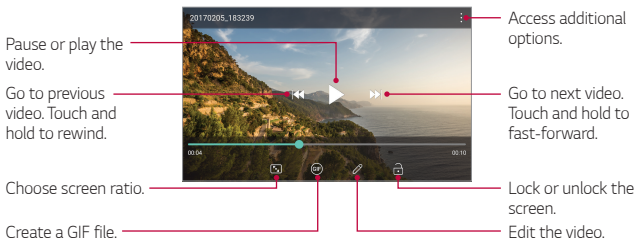


- Some photos may not support the photo memo feature.

Editing photos

- 1 While viewing a photo, tap .
- 2 Use a variety of effects and tools to edit the photo.
- 3 Tap **SAVE** to save changes.
 - The changes are overwritten to the original file.
 - To save the edited photo as another file, tap  > **Save copy**.

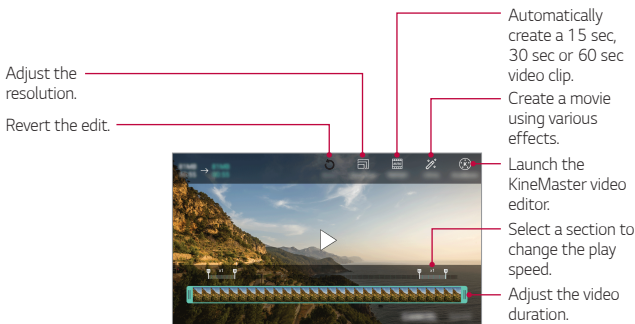
Playing a video



- To adjust the sound volume, drag the right side of the video screen up or down.
- To adjust the screen brightness, drag the left side of the screen up or down.

Editing videos

- 1 While viewing a video, tap .
- 2 Use a variety of effects and edit tools to edit the video.



- 3 Tap **SAVE** to save changes.

Creating a movie

You can create a new movie by putting images and videos together.

See *Creating a movie* for details.



Making a GIF

You can easily make a GIF file using recorded video.

See *Making a GIF* for details.



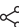
Deleting files

You can delete files by using one of the following options:

- Touch and hold a file from the file list, then tap **Delete**.
- Tap  from the file list and delete the desired files.
- Deleted files are automatically moved to **Trash** and they can be restored to the Gallery within 7 days.
- Tap  to completely delete the files. In this case, the files cannot be restored.

Sharing files

You can share files by using one of the following options:

- While viewing a photo, tap  to share the file by using the method you want.
- While viewing a video,  > **Share** to share the file by using the method you want.
- Tap  from the file list to select files and share them using the method you want.

Contacts


Contacts overview

You can save and manage contacts.

Tap  > **Essentials** > **Contacts**.


Adding contacts

Adding new contacts


- 1 On the contact list screen, tap .
- 2 Enter contact details and tap **SAVE**.

Importing contacts

You can import contacts from another storage device.


- 1 On the contact list screen, tap  > **Manage contacts** > **Import**.
- 2 Select the source and target locations of the contact you want to import, and then tap **OK**.
- 3 Select the vCard file(s) and tap **IMPORT**.

Adding contacts to the speed dial list


- 1 On the contact list screen, tap  > **Speed dial**.
- 2 Tap **Add contact** from a speed dial number.
- 3 Select a contact.

Searching for contacts

You can search for contacts by using one of the following options:


- Tap  from the top of the contacts list and then enter the contact information or phone number.
- Scroll the contact list up or down.
- From the index of the contact list screen, tap the initial letter of a contact.



- Tap  from the top of the contacts list and then enter the contact information or phone number to display all search details from call logs, contacts and groups.


Contacts list

Editing contacts

- 1 On the contact list screen, select a contact.
- 2 On the contact detail screen, tap  and edit details.
- 3 Tap **SAVE** to save changes.


Deleting contacts

You can delete contacts by using one of the following options:


- On the contact list screen, touch and hold a contact you want to delete, then tap **Delete contact**.
- Tap  > **Delete** on the contact list screen.

Adding favourites

You can register frequently used contacts as favourites.

- 1 On the contact list screen, select a contact.
- 2 On the contact detail screen, tap .

Creating groups





- 1 On the contacts group list, tap .
- 2 Enter a new group name.
- 3 Tap **Add members**, select contacts, then tap **ADD**.
- 4 Tap **SAVE** to save the new group.

QuickMemo+




QuickMemo+ overview

You can make creative notes by using a variety of options on this advanced notepad feature, such as image management and screenshots, which are not supported by the conventional notepad.



Creating a note

- 1 Tap  > **QuickMemo+**.
- 2 Tap  to create a note.
 -  : Access additional options.
- 3 Tap  > **Done** to save the note.

Writing notes on a photo





- 1 Tap  > **QuickMemo+**.
- 2 Tap  to take a photo, then tap **OK**.
 - The photo is automatically attached into the notepad.
- 3 Enter text below the photo.
- 4 Tap  > **Done** to save the note.

Writing notes on a screenshot

- 1 While viewing the screen you want to capture, drag the status bar downwards and then tap .
 - The screenshot appears as the notepad background theme. Memo tools appear at the top of the screen.
- 2 Crop the image (if necessary) and take notes as desired.
 - Write notes by hand on the photo.
- 3 Tap  and save the notes to the desired location.
 - Saved notes can be viewed in either **QuickMemo+** or **Gallery**.
 - To save notes in the same location all the time, select the **Use as default app** checkbox and select an app.

Managing folders

You can view notes grouped by the type of the notes.

- 1 Tap  > **QuickMemo+**.
- 2 At the top of the screen, tap  and select a menu item:
 - **All memos**: View all notes saved in QuickMemo+.
 - **My memos**: View notes created by QuickMemo+.
 - **Photo memos**: View notes created by .
 - **Capture+**: View notes created by Capture+.
 - **Trash**: View deleted notes.
 - **New category**: Add categories.
 -  : Rearrange, add or delete categories. To change the name of a category, tap the category.





- Some folders do not appear when launching QuickMemo+ for the first time. Disabled folders are enabled and appear when they contain at least one related note.


Clock

Alarm

You can set an alarm to trigger it at a specified time.



- 1 Tap  > **Essentials** > **Clock** > **Alarm**.
- 2 Tap  to add a new alarm.
- 3 Configure the alarm settings and tap **SAVE**.



- If you select a previously set alarm, you can edit the alarm.
- To delete an alarm, tap  at the top of the screen. You can also touch and hold the alarm.


World clock

You can view the current time in cities around the world.

- 1 Tap  > **Essentials** > **Clock** > **World clock**.
- 2 Tap  and add a city.


Timer

You can set the timer to trigger an alarm after a specified period of time.

- 1 Tap  > **Essentials** > **Clock** > **Timer**.
- 2 Set the time and tap **Start**.
 - To pause the timer, tap **Pause**. To resume the timer, tap **Resume**.
- 3 Tap **Stop** to stop the timer alarm.

Stopwatch

You can use the stopwatch to record a lap time.

- 1 Tap  > **Essentials** > **Clock** > **Stopwatch**.
- 2 Tap **Start** to initiate the stopwatch.
 - To record a lap time, tap **Lap**.



- 3 Tap **Pause** to pause the stopwatch.
 - To resume the stopwatch, tap **Resume**.
 - To clear all the records and restart the stopwatch, tap **Reset**.

Calendar


Calendar overview

You can use the calendar to manage events and tasks.

Adding events

- 1 Tap  > **Essentials** > **Calendar**.
- 2 Select a date and then tap .
- 3 Enter event details and tap **SAVE**.

Syncing events



Tap  > **Calendars to sync**, and select a calendar to sync.



- When your events are saved from the device to your Google account, they are automatically synced with the Google calendar, too. Then, you can sync other devices with the Google calendar in order to make those devices have the same events that your device has and to manage your events on those devices.


Tasks

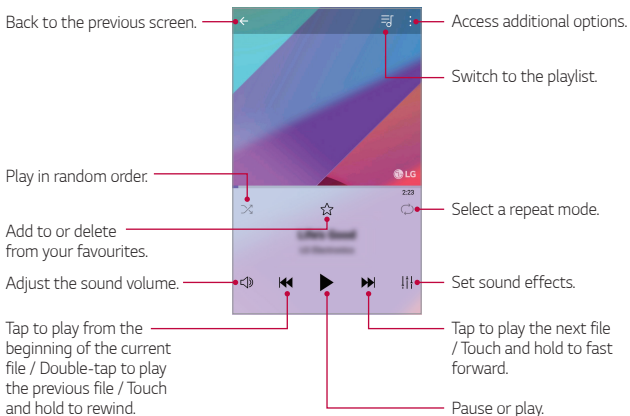
You can register tasks to your device to easily manage schedules.

- 1 Tap  > **Essentials** > **Tasks**.
- 2 Tap  to add a task.
- 3 Enter task details and then tap **SAVE**.

Music

You can play and manage songs or music albums.


- 1 Tap  > **Essentials** > **Music**.
- 2 Select a category.
- 3 Select a music file.



- Some file formats may not be supported, depending on the installed software.
- Files that exceed the size limit may cause an error.
- Music files may be protected by international copyright owners or copyright laws. You may have to obtain legal permission before copying a music file. To download or copy a music file, first check the copyright law for the relevant country.








Calculator

You can use two types of calculators: the simple calculator and the scientific calculator.


- 1 Tap  > **Essentials** > **Calculator**.
- 2 Use the keypad to make a calculation.
 - To use scientific calculator, drag the slide bar located in the right side of the screen to the left.
 - To restart a calculation, touch and hold the **DEL** button.

Audio Recorder

You can record and save your voice or others' voices from important events. Recorded voice files can be played back or shared.

- 1 Tap  > **Essentials** > **Audio Recorder**.
 - To save the recording's location details, tap  > **Add tags** > **Add** under **Location**.
 - To add an event, tap  > **Add tags** > **Add** under **Event**. Then, add an event to the desired date.
- 2 Tap .
 - To pause recording, tap .
- 3 Tap  to end the recording.
 - The file is saved automatically and the recorded files screen appears.
- 4 Tap  to play the recorded voice.



- Tap  to view the recorded files. You can play a recorded voice file from the list.


Email

Use the Email application to send and receive emails from your webmail or other accounts, using POP3 or IMAP, or access your Exchange account for your corporate email needs.

Set up Email account

Your phone supports several types of email accounts and allows you to have multiple email accounts set up at one time.

Before setting up an email account, make sure you have the username (user ID), password, server name, etc., so you can get set up successfully.

- 1 Tap  > **Essentials** > **Email**.
- 2 Follow the onscreen instructions to set up your email account.
 - The email account is set up and you will begin receiving email.

FM Radio

You can listen to FM radio.



Tap  > **Essentials** > **FM Radio**.



- To use this app, first connect earphones to the device. The earphones function as the radio antenna.
- This function may not be supported depending on the area.


File Manager

You can view and manage files saved on your device.

- 1 Tap  > **Management** > **File Manager**.
- 2 Tap  and select the desired storage location.



Smart Doctor

You can use Smart Doctor to diagnose the device's condition and optimise it.

- 1 Tap  > **Management** > **Smart Doctor**.
Or on the settings screen, tap **General** > **Smart Doctor**.

LG Mobile Switch

You can transfer data from your old LG device to a new LG device.

- 1 Tap  > **Management** > **LG Mobile Switch**.
You can also tap  > **Settings** > **General** > **Backup & reset** > **LG Mobile Switch**.
- 2 Follow the on-screen instructions to select a desired method for transfer.



- Data in a Google account will not be backed up. When you synchronise your Google account, Google apps, Google contacts, Google calendar, Google memo app data and apps downloaded from the Play Store are stored on the Drive app automatically.
- Fully charge the battery before transferring data to avoid unintentional powering off during the process.

Downloads

You can view, delete or share files downloaded via the Internet or apps.

Tap  > **Management** > **Downloads**.

SmartWorld

You can download a variety of games, audio content, apps and fonts provided by LG Electronics. Customise your device to suit your preferences by using Home themes and fonts.



- If you use mobile data, you may be charged for data usage depending on your pricing plan.
- This feature may not be supported depending on the area or service provider.

- 1 Tap > **Services** > **SmartWorld**.
- 2 Tap > **LG Account**, then sign in.
- 3 Select and download the desired content items.

RemoteCall Service

Your device can be remotely diagnosed for resolving issues. First, make a phone call to an LG Customer Service Centre as follows:



- To use this function, first you must agree to usage of the function.
- If you use mobile data, you may be charged for data usage depending on your pricing plan.

- 1 Tap > **Services** > **RemoteCall Service**.
- 2 Connect a call to an LG Customer Service Centre.
- 3 After the call connects, follow the service associate's instructions to enter a six-digit access number.
 - Your device is remotely connected and the remote support service starts.

Cell Broadcast

You can view real-time text broadcasts on emergency situations, such as typhoons, floods and earthquakes.

Tap  > **Services** > **Cell Broadcast**.

Chrome

Sign in to Chrome and import opened tabs, bookmarks and address bar data from a computer to your device.

Tap  > .

Google apps

You can use Google apps by setting a Google account. The Google account registration window appears automatically when you use a Google app for the first time. If you do not have a Google account, create one from your device. For details on how to use an app, see the Help in the app.



- Some apps may not work depending on the area or service provider.

Docs

Create documents or edit documents created online or from another device. Share and edit documents together with others.

Drive

Upload, save, open, share and organise files from your device. Files accessible from apps can be accessed from anywhere, including online and offline environments.

Duo

Make a video call with your family, friends and anyone else who uses the app.

Google

Use the Google to search for web pages, images, news and more by entering or speaking keywords.

Gmail

Register your Google email account to your device to check or send email.

Maps

Find your location or the location of a place on the map. View geographical information.

Photos

View or share photos or albums saved on your device.

Play Movies & TV

Use your Google account to rent or purchase movies. Purchase content and play it anywhere.

Play Music

Purchase music files from the Play Store. Play music files saved on your device.

Sheets

Create spreadsheets or edit spreadsheets created online or from another device. Share and edit spreadsheets together with others.

Slides

Create presentation material or edit presentation material created online or from another device. Share and edit presentation material together with others.

YouTube

Search and play videos. Upload videos on YouTube to share them with people around the world.

Google Assistant

You can manage tasks, plan your day, get answers, and much more.



- To use this feature, first connect to the network and sign in to your Google account
- The Google Assistant is not available in all languages.



04

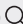

Settings

Settings

You can customise the device settings to fit your preferences.

Tap  > **Settings**.




- Tap  and enter a keyword in the search box to access a setting item.
- Tap  to change the view mode. This user guide assumes that you are using the **Tab view**.

Networks

Wi-Fi

You can connect to nearby devices over a Wi-Fi network.

Connecting to a Wi-Fi network

- 1 On the settings screen, tap **Networks** > **Wi-Fi**.
- 2 Tap  to activate it.
 - Available Wi-Fi networks appear automatically.
- 3 Select a network.
 - You may need to enter the network's Wi-Fi password.
 - The device skips this process for previously accessed Wi-Fi networks. If you do not want to automatically connect to a certain Wi-Fi network, tap the network and then tap **Forget network**.

Wi-Fi network settings

On the settings screen, tap **Networks** > **Wi-Fi**.

- **Switch to mobile data:** If the mobile data connection function is activated but the device cannot connect to the Internet via Wi-Fi connection, the device automatically connects to the Internet via the mobile data connection.




- This feature depends on the service provider.

-  : Customise Wi-Fi network settings.

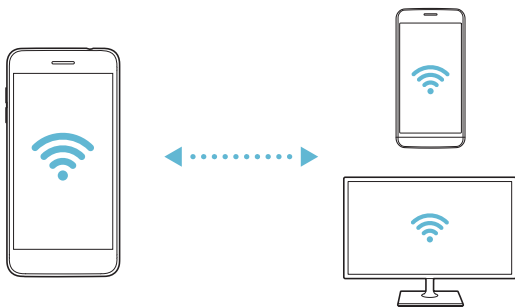
Wi-Fi Direct

You can connect your device to other devices that support Wi-Fi Direct to share data directly with them. You do not need an access point. You can connect with more than two devices by using Wi-Fi Direct.

- 1 On the settings screen, tap **Networks > Wi-Fi >  > Advanced Wi-Fi > Wi-Fi Direct**.
 - Nearby devices that support Wi-Fi Direct automatically appear.
- 2 Select a device.
 - Connection occurs when the device accepts the connection request.




- The battery may drain faster when using Wi-Fi Direct.



Bluetooth

You can connect your device to nearby devices that support Bluetooth to exchange data with them. Connect your device to a Bluetooth headset and a keyboard. This makes it easier to control the device.

Pairing with another device

- 1 On the settings screen, tap **Networks > Bluetooth**.
- 2 Tap  to activate it.
 - Available devices appear automatically.
 - To refresh the device list, tap **SEARCH**.




- Only devices set as visible are displayed on the list.

- 3 Select a device from the list.
- 4 Follow the on-screen instructions to perform authentication.



- This step is skipped for previously accessed devices.

Sending data via Bluetooth

- 1 Select a file.
 - You can send multimedia files or contacts.
- 2 Tap  > **Bluetooth**.
- 3 Select a target device for the file.
 - The file is sent as soon as the target device accepts it.



- File sharing processes may differ, depending on the file.


Mobile data

You can turn mobile data on and off. You can also manage mobile data usage.

Turning on mobile data

- 1 On the settings screen, tap **Networks > Mobile data**.
- 2 Tap  to activate it.

Customising mobile data settings

- 1 On the settings screen, tap **Networks > Mobile data**.
- 2 Customise the following settings:
 - **Mobile data**: Set to use data connections on mobile networks.
 - **Limit mobile data usage**: Set a limit for mobile data usage to block mobile data if the limit is reached.
 -  :Customise mobile data settings.

Call

You can customise call settings, such as voice call and international call options.



- Some features may not be supported depending on the area or service provider.

- 1 On the settings screen, tap **Networks > Call**.
- 2 Customise the settings.

Tethering

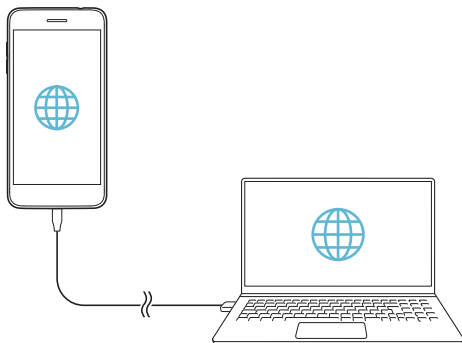
USB tethering

You can connect the device to another device via USB and share mobile data.

- 1 Connect your device and other devices via USB cable.
- 2 On the settings screen, tap **Networks > Tethering > USB tethering** and then tap ☐ to activate it.



- This option uses mobile data and may incur data usage fees, depending on your pricing plan. Consult with your service provider for more information.
- When connecting to a computer, download the USB driver from www.lg.com and install it on the computer.
- You cannot send or receive files between your device and a computer while USB tethering is turned on. Turn off USB tethering to send or receive files.
- Operating systems that support tethering are Window XP or higher, or Linux.



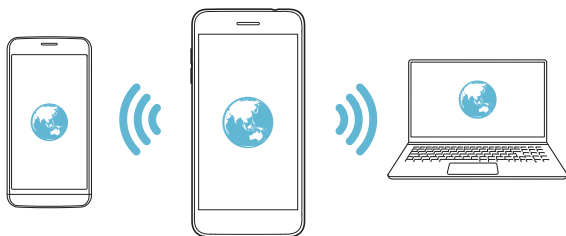
Wi-Fi hotspot

You can set the device as a wireless router so that other devices can connect to the Internet by using your device's mobile data.

- 1 On the settings screen, tap **Networks > Tethering > Wi-Fi hotspot** and then tap ☐ to activate it.
- 2 Tap **Set up Wi-Fi hotspot**, and enter the Wi-Fi name (SSID) and password.
- 3 Turn on Wi-Fi on the other device, and select the name of the device network on the Wi-Fi list.
- 4 Enter the network password.



- This option uses mobile data and may incur data usage fees, depending on your pricing plan. Consult with your service provider for more information.
- More information is available at this web site:
<http://www.android.com/tether#wifi>



Wi-Fi hotspot turn off timer


When the Wi-Fi hotspot has not been used for a specific period of time, it is automatically disconnected. You can set the time for automatic disconnection.

Wi-Fi Sharing

When you activate this feature with the device connected via Wi-Fi, the shared devices are connected to the network by using the device's Wi-Fi. If this feature is deactivated, the mobile data features is used for network connection.

Bluetooth tethering

A Bluetooth-connected device can connect to the Internet by using your device's mobile data.

- 1 On the settings screen, tap **Networks > Tethering > Bluetooth tethering** and then tap  to activate it.
- 2 Turn on Bluetooth on both devices and pair them.



- This option uses mobile data and may incur data usage fees, depending on your pricing plan. Consult with your service provider for more information.
- More information is available at this web site:
http://www.android.com/tether#Bluetooth_tethering

Help

You can view help on using tethering and hotspots.

On the settings screen, tap **Networks > Tethering > Help**.

More

Airplane mode

You can turn off the call and mobile data functions. When this mode is on, functions that do not involve data, such as games and music playback, remain available.

- 1 On the settings screen, tap **Networks > More > Airplane mode**.
- 2 Tap **TURN ON** in the confirmation screen.

Mobile networks

You can customise the mobile networks settings.

- 1 On the settings screen, tap **Networks > More > Mobile networks**.
- 2 Customise the following settings:
 - **Mobile data:** Turn mobile data on or off.
 - **Data roaming:** Browse the web, use emails, multimedia messages and other data services overseas.
 - **Network mode:** Select a network type.
 - **Access Point Names:** View or change the access point for using mobile data services. To change the access point, select a choice from the access point list.
 - **Network operators:** Search for network operators and connect automatically to a network.

VPN

You can connect to a safe virtual network, such as an intranet. You can also manage connected virtual private networks.

Adding VPN

- 1 On the settings screen, tap **Networks > More > VPN**.
- 2 Tap **Add VPN**.



- This feature is available only when the screen lock is activated. If the screen lock is deactivated, a notification screen appears. Tap **CHANGE** from the notification screen to activate the screen lock. See *Setting a screen lock* for details.

- 3 Enter VPN details and tap **SAVE**.

Configuring VPN settings

- 1 Tap a VPN from the **VPNS** list.
- 2 Enter the VPN user account details and tap **CONNECT**.
 - To save the account details, select the **Save account information** checkbox.

Printing

You can connect your device to a Bluetooth printer and print photos or documents saved on the device.

- 1 On the settings screen, tap **Networks > More > Printing**.



- If the desired printer is not in the list, install the printer driver from the app store.

- 2 Select print service.
- 3 Tap ☐ to activate it.
- 4 Select a printer from the printer list screen.
 - To add a printer, tap **:** > **Add printer**.
 - To search for a printer name, tap **:** > **Search**.
 - Tap **:** > **Settings** from the printer list screen.
- 5 Select a file and tap **:** > **Print**.
 - The document prints.



- If you do not have a Google account, tap **ADD ACCOUNT** to create an account.

Sound & notification

You can customise the sound, vibration and notification settings.

On the settings screen, tap **Sound & notification** and customise the following settings:

- **Sound profile:** Change the sound mode to **Sound**, **Vibrate only**, or **Silent**.
- **Volume:** Adjust the sound volume for various items.
- **Ringtone:** Select a ringtone for incoming calls.
Add or delete ringtones.
- **Ringtone ID:** Create a ringtone for an incoming call from a particular contact.
- **Sound with vibration:** Set the device to vibrate and play a ringtone simultaneously.
- **Vibration type:** You can select the type of vibration when receiving calls.
- **Do not disturb:** Set the time, range and app type to receive notification messages. Receive notification messages only on particular days of the week.
- **Lock screen:** Display or hide a notification message on the lock screen. You can also hide private information.
- **Apps:** Select the apps that can show their notification messages on the screen, and set the priorities of those apps in regard to notification messages.
- **More > Notification sound:** Select a notification ringtone. Set music saved on the device as a notification ringtone.
- **More > Sound effects:** Select a sound effect to play when you tap the dialpad or keyboard, select an option, or lock or unlock the screen.

Display

You can customise the settings for the Home screen and Lock screen.

On the settings screen, tap **Display** and customise the following settings:

- **Home screen:** Customise settings for the Home screen. See *Home screen settings* for details.
- **Lock screen:** Customise lock screen settings. See *Lock screen settings* for details.
- **Theme:** Select a screen theme for your device.
- **Home touch buttons:** Rearrange Home touch buttons or change their background colours.
- **Font type:** Change the font face.
- **Font size:** Change the font size.
- **Bold text:** Bold the text on the screen.
- **Display size:** Set the items on the screen to a size easy for you to see. Some items may change position.
- **Brightness:** Use the slide bar to change the device's screen brightness. To automatically adjust screen brightness according to the ambient light intensity, tap the **Auto** switch.
- **Auto:** Set the device so that the screen brightness is automatically adjusted in accordance with the ambient light intensity.
- **Auto-rotate screen:** Automatically rotate the screen according to the device's orientation.
- **Screen timeout:** Automatically turn off the screen when the device is left idle for a specified period of time.
- **More > KnockON:** Turn the screen on or off by tapping the screen twice.
- **More > Screen saver:** Display a screen saver when the device is connected to the holder or charger. Select a screen saver type to display.

General

Language & keyboard

You can customise language and keyboard settings for your device.

- 1 On the settings screen, tap **General > Language & keyboard**.
- 2 Customise the following settings:
 - **Language:** Select a language to apply for the device.
 - **Current keyboard:** View the keyboard currently in use. Select a keyboard to use when entering text.
 - **LG Keyboard:** Customise the LG keyboard settings.
 - **Google voice typing:** Configure the options for text dictation by Google.
 - **Text-to-speech output:** Configure the settings for text-to-speech output.
 - **Pointer speed:** Adjust the pointer speed of a mouse or trackpad.
 - **Reverse buttons:** Reverse the right mouse button to perform primary direct-manipulation actions.

Location

You can customise how your location information is used by particular apps.

- 1 On the settings screen, tap **General > Location**.
- 2 Customise the following settings:
 - **Mode:** Select a method to provide your location information.
 - **RECENT LOCATION REQUEST:** View apps that recently requested location information.
 - **Low power location estimation:** Estimate the device location by using low power consumption.
 - **Google Location History:** Configure the Google location history settings.

Accounts & sync

You can add or manage accounts, including a Google account. You can also sync particular apps or user information automatically.


- 1 On the settings screen, tap **General > Accounts & sync**.
- 2 Customise the following settings:
 - **Auto-sync data**: Sync all the registered accounts automatically.
 - **ACCOUNTS**: View a list of registered accounts. To view or change details of an account, tap the account.
 - **ADD ACCOUNT**: Add accounts.

Accessibility

You can manage accessibility plug-ins installed on your device.


- 1 On the settings screen, tap **General > Accessibility**.
- 2 Customise the following settings:
 - **Vision > TalkBack**: Set the device to notify screen status or actions via voice.
 - **Vision > Voice notifications**: Set the device to read the caller information or message content via voice.
 - **Vision > Font size**: Change the font size.
 - **Vision > Bold text**: Bold the text on the screen.
 - **Vision > Display size**: Set the items on the screen to a size easy for you to see. Some items may change position.
 - **Vision > Touch zoom**: Zoom in or out by tapping the screen three times.
 - **Vision > Window zoom**: Zoom in or out within a window and invert the colour.
 - **Vision > Large mouse pointer**: Magnify the mouse pointer.
 - **Vision > High contrast screen**: Turn the background colour into black for a high contrast screen.

- **Vision > Screen colour inversion:** Increase the display colour contrast for people with low vision.
- **Vision > Screen colour adjustment:** Adjust the display colour.
- **Vision > Grayscale:** Switch the screen to grayscale mode.
- **Vision > End call with the Power key:** End a call by pressing the Power/Lock key.
- **Hearing > Captions:** Turn on the subtitle service when playing videos for the hearing impaired.
- **Hearing > Flash alerts:** Set the device to notify you with a blinking light for incoming calls, messages and alarms.
- **Hearing > Mute all sounds:** Mute all sounds and lower volume on the receiver.
- **Hearing > Audio channel:** Select the audio type.
- **Hearing > Sound balance:** Adjust the audio output balance. Use the slide bar to change the balance.
- **Motor & cognition > Touch assistant:** Turn on the touch board to make buttons and gestures easier to use.
- **Motor & cognition > Touch input:** Enter text by touching and holding the screen or modify it by simply touching the screen.
- **Motor & cognition > Physical keyboard:** Customise the keyboard settings.
- **Motor & cognition > Auto mouse click:** Automatically click the mouse pointer in case of no movement.
- **Motor & cognition > Touch and hold for calls:** Answer or decline calls by touching and holding the call button instead of dragging it.
- **Motor & cognition > Screen timeout:** Turn off the screen automatically when the device is left idle for a specified period of time.
- **Motor & cognition > Touch control areas:** Limit the touch area so that only a particular portion of the screen can be controlled by touch input.

- **Accessibility features shortcut:** Quickly access a frequently used function by tapping  three times.
- **Auto-rotate screen:** Automatically change the screen orientation according to the physical position of the device.
- **Select to Speak:** Allows you to tap items to hear spoken feedback.
- **Switch Access:** Create key combinations to control your device.

Shortcut keys

You can use the volume keys to directly launch apps when the screen is turned off or locked.

- 1 On the settings screen, tap **General > Shortcut keys**.
- 2 Tap  to activate it.
 - Press the Volume Up (+) key twice to launch **Capture+** when the screen is locked or turned off. Press the Volume Down (-) key twice to launch the **Camera** app.

Google services

You can use Google settings to manage your Google apps and account settings.

On the settings screen, tap **General > Google services**.


Security

- 1 On the settings screen, tap **General > Security**.
- 2 Customise the following settings:
 - **Content lock:** Set the method to lock files in QuickMemo+.
 - **Encrypt phone:** Encrypt the all data on your phone (account, settings, downloaded apps, media files and other files).
 - **Encrypt SD card:** Encrypt the memory card to prevent use on another device. See *Memory card encryption* for details.

- **Make passwords visible:** Display a password as you enter it.
- **Phone administrators:** Allow privileges to restrict the control or use of the device to particular apps.
- **Unknown sources:** Allow the installation of apps from non-Play Store apps.
- **Credential protection:** View the type of credential protection currently used.
- **Certificate management:** Manage the security certificate saved on the device.
- **Trust agents:** View and use trust agents installed on the device.
- **Screen pin:** Fix the app screen so that only the currently active app can be used.
- **Usage access:** View details on usage of apps on the device.

Gaming

You can configure settings for game tools, graphics and battery saving feature.

- **Game tools:** Tap  to activate this feature. You can launch this feature by tapping the game tool icon at the bottom of the screen while playing games.
- **Game graphics:** Adjust the game graphics.



- When you change the resolution on some games, the screen display feature may not work properly.

- **Break time:** Reduce the screen brightness and performance whenever you leave the game running for more than 5 minutes.


Date & time

You can customise date and time settings for your device.

- 1 On the settings screen, tap **General > Date & time**.
- 2 Customise the settings.

Storage

You can view and manage internal storage on the device or storage space of the memory card.

- 1 On the settings screen, tap **General > Storage**.
- 2 Customise the following settings:
 - **Internal storage:** View the total storage space and free space in the device's internal storage. View a list of apps in use and the storage capacity for each app.
 - **SD card:** View the total storage space and free space in the memory card. This option appears only when a memory card is inserted. To unmount the memory card, tap .

Battery & power saving

You can view the current battery information or turn on power-saving mode.

- 1 On the settings screen, tap **General > Battery & power saving**.
- 2 Customise the following settings:
 - **Battery usage:** View the battery usage details. To view more details, select a specific item.
 - **Battery percentage on status bar:** Display the remaining battery level as a percentage on the status bar.
 - **Battery saver:** Reduce battery consumption by cutting down some device settings, such as the display brightness, speed and vibration intensity.
 - **Power saving exclusions:** Select apps to use without any functional limitation while in power saving or battery optimisation mode.

Memory

You can view the average amount of memory usage over a certain period of time and the memory occupied by an app.

- 1 On the settings screen, tap **General > Memory**.
- 2 Tap ▼ to set a time slot to retrieve data.

Smart Doctor

You can use Smart Doctor to diagnose the device's condition and optimise it.

On the settings screen, tap **General > Smart Doctor**.



- You can also access this menu from the Smart Doctor app.
Tap ○ > **Management > Smart Doctor**.

Apps

You can view a list of installed apps. Stop apps from running or delete apps, if necessary.

- 1 On the settings screen, tap **General > Apps**.
- 2 Select an app and perform actions.

Backup & reset

You can back up data saved on your device to another device or account. Reset the device, if necessary.

- 1 On the settings screen, tap **General > Backup & reset**.
- 2 Customise the following settings:
 - **LG Mobile Switch:** Allows you to transfer data from an old LG device to your new LG device. See *LG Mobile Switch* for details.
 - **Backup & restore:** Back up your device data or restore data to your device from a backup.



- Data in a Google account will not be backed up. When you synchronize your Google account, Google apps, Google contacts, Google calendar, Google memo app data and apps downloaded from the Play Store are stored on the Drive app automatically.
- Backup files are saved with the file extension *.lbf under the LG Backup folder on the memory card or internal storage.
- Fully charge the battery before backing up or restoring data to avoid unintentional powering off during the process.

- **Back up my data:** Back up your app data, Wi-Fi password and other settings to the Google server.
- **Backup account:** View the current backup account in use.
- **Automatic restore:** Automatically restore backup settings and data when reinstalling an app.
- **Network settings reset:** Reset Wi-Fi, Bluetooth and other network settings.
- **Factory data reset:** Reset all settings for the device and delete data.



- Resetting your device deletes all data on it. Enter your device name, Google account and other initial information again.

About phone

You can view information about your device, such as the name, status, software details and legal information.

On the settings screen, tap **General** > **About phone** and view information.





05

Appendix

LG Language Settings

Select a language to use on your device.

- Tap  > **Settings** > **General** > **Language & keyboard** > **Language** > **ADD LANGUAGE**, and select a language.
- Touch and hold  and drag it to the top of the language list to set it as a default language.

LG Bridge

LG Bridge overview

LG Bridge is an app that helps you manage the photos, music, videos and documents saved on your LG smartphone from your computer conveniently. You can back up contacts, photos and more to the computer or update the device software.




- See LG Bridge help for details.
- The supported features may vary depending on the device.
- LG USB driver is a necessary program to connect your LG smartphone with the computer and is installed when you install LG Bridge.

LG Bridge functions

- Manage the files on the device from a computer via Wi-Fi connection or mobile data connection.
- Back up data from the device to a computer or restore data from a computer to the device via USB cable connection.
- Update the device software from a computer via USB cable connection.

Installing LG Bridge on a computer

- 1 Go to www.lg.com from your computer.
- 2 Select your region and click .
- 3 In the search bar, enter the name of your device.
- 4 Click **Support > Manuals & Downloads**.
- 5 In the Software & Firmware, Click **PC Sync** and download the setup file.
 - Click **Details** to view the minimum requirements for installing LG Bridge.

Phone software update

LG Mobile phone software update from the Internet

For more information about using this function, please visit <http://www.lg.com/common/index.jsp>, select your country and language.

This feature allows you to conveniently update the firmware on your phone to a newer version from the Internet without needing to visit a service centre. This feature will only be available if and when LG makes a newer firmware version available for your device.

Because the mobile phone firmware update requires the user's full attention for the duration of the update process, please make sure you check all instructions and notes that appear at each step before proceeding. Please note that removing the USB cable during the upgrade may seriously damage your mobile phone.



- LG reserves the right to make firmware updates available only for selected models at its own discretion and does not guarantee the availability of the newer version of the firmware for all handset models.

LG Mobile Phone software update via Over-the-Air (OTA)

This feature allows you to conveniently update your phone's software to a newer version via OTA, without connecting a USB cable. This feature will only be available if and when LG makes a newer firmware version available for your device.

To perform the phone software update,

Settings > General > About phone > Update centre > Software Update > Check now for update.



- Your personal data from internal phone storage—including information about your Google account and any other accounts, your system/application data and settings, any downloaded applications and your DRM licence—might be lost in the process of updating your phone's software. Therefore, LG recommends that you backup your personal data before updating your phone's software. LG does not take responsibility for any loss of personal data.
- This feature depends on the area or service provider.

Anti-Theft Guide

Set up your device to prevent other people from using it if it's been reset to factory settings without your permission. For example, if your device is lost, stolen, or wiped, only someone with your Google account or screen lock information can use the device.

All you need to make sure your device is protected is:

- **Set a screen lock:** If your device is lost or stolen but you have a screen lock set, the device can't be erased using the Settings menu unless your screen is unlocked.
- **Add your Google account on your device:** If your device is wiped but you have your Google account on it, the device can't finish the setup process until your Google account information is entered again.

After your device is protected, you'll need to either unlock your screen or enter your Google account password if you need to do a factory reset. This ensures that you or someone you trust is doing the reset.



- Do not forget your Google account and password you had added to your device prior to performing a factory reset. If you can't provide the account information during the setup process, you won't be able to use the device at all after performing the factory reset.

Open Source Software Notice Information

To obtain the source code under GPL, LGPL, MPL, and other open source licenses, that is contained in this product, please visit <http://opensource.lge.com>.

In addition to the source code, all referred license terms, warranty disclaimers and copyright notices are available for download.

LG Electronics will also provide open source code to you on CD-ROM for a charge covering the cost of performing such distribution (such as the cost of media, shipping, and handling) upon email request to opensource@lge.com.

This offer is valid for a period of three years after our last shipment of this product. This offer is valid to anyone in receipt of this information.

Trademarks

- Copyright ©2018 LG Electronics Inc. All rights reserved. LG and the LG logo are registered trademarks of LG Group and its related entities.
- Google™, Google Maps™, Gmail™, YouTube™, Duo™ and Google Play™ store are trademarks of Google, Inc.
- Bluetooth® is a registered trademark of Bluetooth SIG, Inc. worldwide.
- Wi-Fi® and the Wi-Fi logo are registered trademarks of the Wi-Fi Alliance.
- All other trademarks and copyrights are the property of their respective owners.



DECLARATION OF CONFORMITY

Hereby, **LG Electronics** declares that this **LM-X210ZM** product is in compliance with the essential requirements and other relevant provisions of Directive **2014/53/EU**.

A copy of the Declaration of Conformity can be found at
<http://www.lg.com/global/declaration>

More information

Guide to data transfers

- For the data that can be exchange between LG devices or between the LG device and a third party device, see the following table.


Type	Item details	LG device → LG device	Third party Android device → LG device	iOS device → LG device
Personal data	Contacts, messages, dial logs, calendar, voice recordings	○	○	○
	Memos	○	X	○
	Alarms	○	X	X
Media data	Photos, videos, songs, documents	○	○	○
Screen settings	Home screen settings (folders and widgets)	○	X	X
	Lock screen settings (screen lock settings excluded)	○	X	X
Apps	Downloaded apps	○	○	-
	Personal data of the downloaded app	○	X	
Others	Public certificate	○	○	X
	Settings (Wi-Fi, Bluetooth, Calls, sound & notification, accessibility, battery)	○	X	X



- Some data may not be transmitted depending on the software version, app version, operating system, manufacturer or service provider's policy.

FAQ

This chapter lists some problems you might encounter when using your phone. Some problems require you to call your service provider, but most are easy to fix yourself.

Message	Possible causes	Possible corrective measures
SIM card error	There is no SIM card in the phone or it is inserted incorrectly.	Make sure the SIM card is correctly inserted.
No network connection/ Dropped network	Signal is weak or you are outside the carrier network.	Move toward a window or into an open area. Check the network operator coverage map.
No applications can be set	Not supported by service provider or registration required.	Contact your service provider.
Downloaded application causes a lot of errors.	Application has problems.	1. Tap  > Settings . 2. Tap General > Apps . 3. Tap the app > Uninstall .
Calls not available	Dialling error	New network not authorised.
	New SIM card inserted.	Check for new restrictions.
Device cannot be turned on	Battery is not charged.	Charge battery. Check the charging indicator on the display.

Message	Possible causes	Possible corrective measures
Charging error	Battery is not charged.	Charge battery.
	Outside temperature is too hot or cold.	Make sure device is charging at a normal temperature.
	Contact problem	Check the charger and its connection to the device.
	No voltage	Plug the charger into a different outlet.
	Charger defective	Replace the charger.
	Wrong charger	Use only original LG accessories.
Number not allowed.	The Fixed dialling number function is on.	Check the Settings menu and turn the function off.
Files do not open	Unsupported file format	Check the supported file formats.
The screen does not turn on when I receive a call.	Proximity sensor problem	If you use a protection tape or case, make sure it has not covered the area around the proximity sensor. Make sure that the area around the proximity sensor is clean.
No sound	Vibration mode	Check the settings status in the sound menu to make sure you are not in vibration or no interruptions mode.

Message	Possible causes	Possible corrective measures
Hangs up or freezes	Intermittent software/hardware problem	Restarting the device If your device freezes or hangs, you may need to close apps or turn off the device and turn it on again.
		Resetting the device If the methods above do not solve your problem, perform a factory data reset. On the settings screen, tap General > Backup & reset > Factory data reset . *Reset all settings for the device and delete data. Before performing the factory data reset, remember to make backup copies of all important data stored in the device. *If you registered a Google account to the device, you must sign in to the same Google account after resetting the device.

