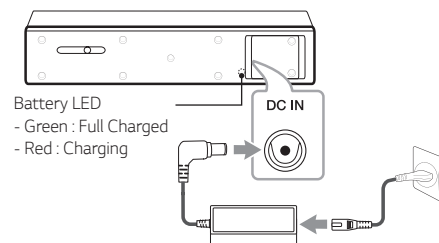
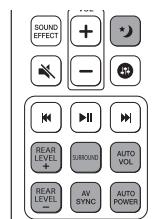


Charging the Unit

Before using it, charge the battery by connecting the AC Adapter.
(Secondary unit only)



Remote control



🌙: Turns down the volume at night.

REAR LEVEL -/+: Adjusts rear level of Secondary unit on the REAR usage mode.

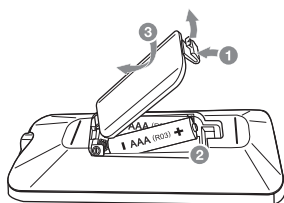
SURROUND: Turns on/off Surround function.

AV SYNC: Synchronizes the audio and video.

AUTO VOL: Automatically adjusts too loud or low output volume level appropriately.

AUTO POWER: Automatically turns on by an input source.

Replacement of battery



About Ferrite Core (Optional)



Wind AC adapter cable around the ferrite core once.
Connect the AC adapter applied a ferrite core to the secondary unit.

Additional Information

Specification

| | |
|------------------------------------|---|
| Power consumption | Refer to the main label. |
| AC adapter | <ul style="list-style-type: none"> Model : DA-50F25 Manufacturer : Asian Power Devices Inc. Input : 100 - 240 V ~ 50 - 60 Hz Output : 25 V 2 A |
| Dimensions (W x H x D) | Approx. 340 mm x 74 mm x 110 mm With foot (In each of Primary unit and Secondary unit) |
| Amplifier (Total RMS Output power) | 320 W RMS (In state of connecting AC Adapter). |
| Operating time (Battery) | Approx. 4 hours (Varies by volume level and audio content.) |

Design and specifications are subject to change without notice.

OPEN SOURCE SOFTWARE NOTICE INFORMATION

To obtain the source code under GPL, LGPL, MPL, and other open source licenses, that is contained in this product, please visit <http://opensource.lge.com>.

In addition to the source code, all referred license terms, warranty disclaimers and copyright notices are available for download.

LG Electronics will also provide open source code to you on CD-ROM for a charge covering the cost of performing such distribution (such as the cost of media, shipping and handling) upon email request to opensource@lge.com. This offer is valid for three (3) years from the date on which you purchased the product.



SIMPLE MANUAL Wireless Sound Bar

Please read this manual carefully before operating your set and retain it for future reference.

To view the instructions of advanced features, visit <http://www.lg.com> and then download Owner's Manual. Some of the content in this manual may differ from your unit.

MODELS

SJ7

SJ7-C

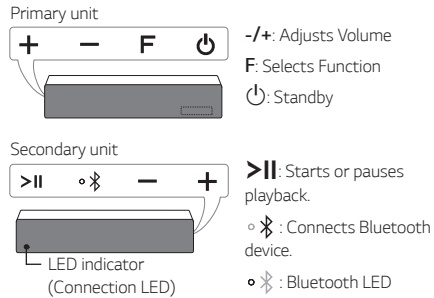


www.lg.com

Copyright © 2017 LG Electronics. All Rights Reserved

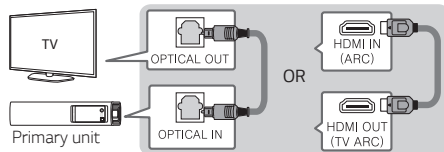


Front/Side Panel



TV Connection

Connect with the Sound Bar and TV using Optical or HDMI ARC.



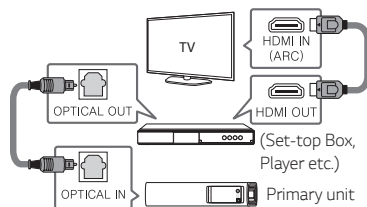
- 1 Connect the sound bar to the TV using Optical or HDMI cable.
- 2 Set up [External Speaker (Optical)] or [External Speaker (HDMI ARC)] on your TV setting menu.



- HDMI connection is unavailable if your TV does not support HDMI ARC.
- If this unit is connected by OPTICAL and ARC at the same time, the ARC signal is a high priority.

Additional Device Connection

- 1 Connect to the external device. It is recommended to connect as follows.



- 2 Set the input source by pressing F on the remote control or unit repeatedly.

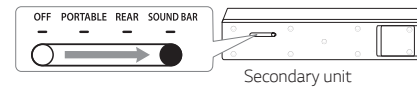
Speaker Connection

You can use speaker connection in the SOUND BAR or REAR usage mode only.

Secondary unit connection

Place the Secondary unit near the Primary unit and follow steps below.

- 1 Connect the power cord of Secondary unit and Primary unit to the outlet.
- 2 Turn on the Primary unit by pressing ⏻. Turn on the Secondary unit by switching the Usage Mode Switch to REAR or SOUND BAR.



The Primary unit and Secondary unit will be **automatically** connected. The Secondary unit's white LED turns on.

Secondary unit Connection Manually

If the Secondary unit does not make sound, try to connect manually.

- 1 Turn off the Primary unit.
- 2 Press **PAIRING** button on the rear of the Secondary unit. The white LED on the front of Secondary unit blinks.
- 3 Turn on the Primary unit.
- 4 Pairing is completed. The white LED on the front of Secondary unit turns on.

Subwoofer connection

Place the wireless subwoofer near the speaker and follow steps below.

- 1 Connect the power cord of wireless subwoofer and sound bar to the outlet.
- 2 Turn on the Primary unit :
The sound bar and wireless subwoofer will be **automatically** connected. The subwoofer's green LED turns on.

Subwoofer Connection Manually

If the subwoofer does not make sound, try to connect manually.

- 1 Press **Pairing** button on the rear of the wireless subwoofer. The green LED blinks quickly.
- 2 Turn on the Primary unit.
- 3 Pairing is completed. The green LED turns on.

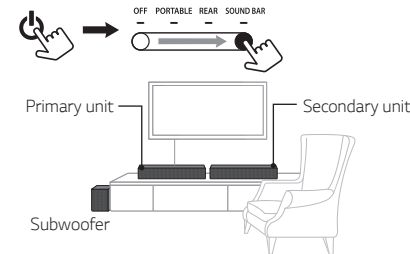
Positioning the Unit

SOUND BAR usage mode

Primary unit and Secondary unit play as FRONT L/ R(Left/Right) speaker like a sound bar.

Turn on the Primary unit by pressing ⏻. Turn on the Secondary unit by switching the Usage Mode Switch to SOUND BAR.

When disconnecting AC Adapter of Secondary unit, the audio output may be reduced.

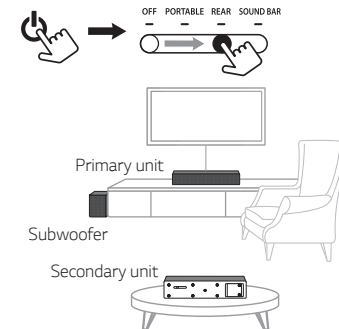


REAR usage mode

Primary unit plays as front speaker and Secondary unit plays as rear surround speaker.

Turn on the Primary unit by pressing ⏻. Turn on the Secondary unit by switching the Usage Mode Switch to REAR.

When disconnecting AC Adapter of Secondary unit, the audio output may be reduced.

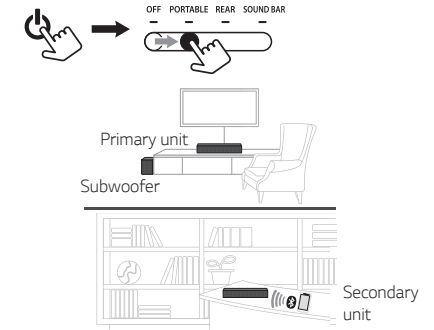


PORTABLE usage mode

You can play Secondary unit without Primary unit.

Primary unit and Secondary unit play separately with each connected device.

Turn on the Secondary unit by switching the Usage Mode Switch to PORTABLE.



BLUETOOTH Connection (Secondary unit)

Select LG SJ7-2ND (xx) from device list to pair your mobile device.

When successfully Paired, Bluetooth LED turns on white with beep sound.

BLUETOOTH Connection (Primary unit)

- 1 Press F button to select the BT (Bluetooth) Function.
- 2 Select LG SJ7 (xx) from device list to pair your mobile device.
When successfully Paired, "PAIRED" Your device's name "BT" appears in the display window in this order.

OFF usage mode

Primary unit plays alone without Secondary unit

Turn on the Primary unit by pressing ⏻. Turn on the Secondary unit by switching the Usage Mode Switch to OFF.

