



ENGLISH

SIMPLE MANUAL

Wireless Sound Bar

To view the instructions of advanced features,
visit <http://www.lg.com> and then download Owner's Manual.
Some of the content in this manual may differ from your unit.

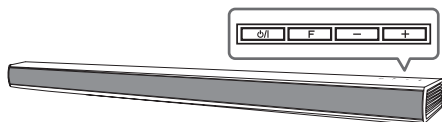
MODEL
SH4



www.lg.com



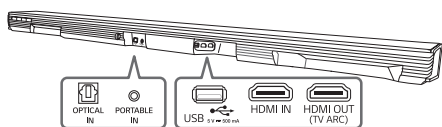
Front Panel



The buttons are located on the rear.

P/I	Standby / ON
F	Selects Function
- +	Adjusts Volume

Rear Panel



OPTICAL IN	Connect to an Optical device
PORTABLE IN	Connect to a Portable device
USB port	Connect to a USB device
HDMI IN	Connect to HDMI out on a device
HDMI OUT (TV ARC)	Connect to a TV

1

Subwoofer Connection

Place the wireless subwoofer near the speaker and follow steps below.

- 1 Connect the power cord of wireless subwoofer to the outlet.
- 2 Turn on the main unit :

The sound bar and wireless subwoofer will be **automatically** connected. The subwoofer's green LED turns on.

Subwoofer Connection Manually

- 1 Reset the Subwoofer

If the green LED on the subwoofer blinks quickly, skip this step and go to **2**

- Press and hold **Pairing** button for 5 seconds.
- The LED lights up alternately in red and green.
- Plug out the power cord. After the LED turns off completely, plug in the power cord again.

When the reset is completed, the subwoofer's green LED blinks quickly.

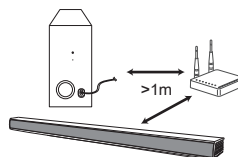
- 2 Reset the sound bar

- Adjust volume to minimum until the red LED on the sound bar lights up for a while.
- Press and hold **Mute** button on the remote control for 3 seconds.
- The red LED on the sound bar blinks quickly
- Turn the sound bar's power off and on while the subwoofer's green LED blinks.

When the connection is completed, you can see the green LED on the subwoofer.



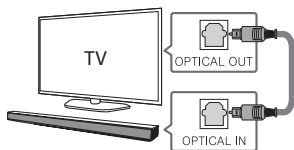
Keep the sound bar and the subwoofer away from the device (ex. wireless router, microwave oven, etc.) over 1m to prevent wireless interference.



Connect with the Sound Bar and TV using Optical (A) or HDMI ARC (B).

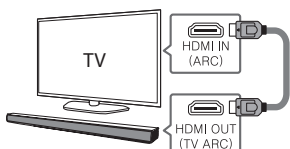
A Optical Connection

- 1 Connect the sound bar to the TV using Optical cable.
- 2 Set up [External Speaker (Optical)] on your TV setting menu.



B HDMI(ARC) Connection

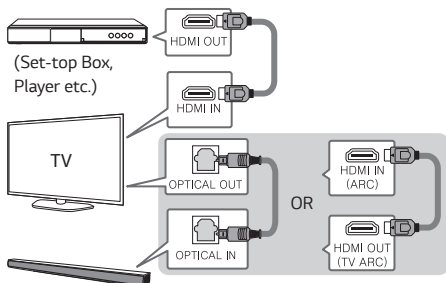
- 1 Connect the sound bar to the TV using HDMI cable.
- 2 Set up [External Speaker (HDMI ARC)] on your TV setting menu.



HDMI connection is unavailable if your TV does not support HDMI ARC.

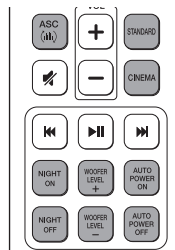
Additional Device Connection

- 1 Connect to the external device as follows.



- 2 Set the input source by pressing F on the remote control or unit repeatedly.

Remote control



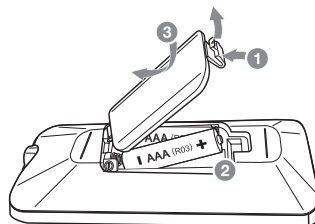
ASC/STANDARD/CINEMA: Selects the sound effect.

NIGHT ON/OFF: Turns down the volume at night.

WOOFER LEVEL +/-: Adjusts the volume level of subwoofer.

AUTO POWER ON/OFF: Automatically turns on by an input source.

Replacement of battery



Additional Information

Specification

Power consumption	Refer to the main label.
	Networked standby : 0.5 W (If all network ports are activated.)
AC adapter	Model : DA-38A25 Manufacturer : Asian Power Devices Inc.
	Input : 100 - 240 V ~ 50 - 60 Hz 1.2 A Output : 25 V \equiv 1.52 A
Dimensions (W x H x D)	Approx. 890 mm x 53 mm x 85 mm Without foot
Net Weight	Approx. 2.34 kg
Bus Power Supply (USB)	5 V \equiv 500 mA
Amplifier (Total RMS Output power)	300 W

Design and specifications are subject to change without notice.

How to disconnect the wireless network connection or the wireless device

Set up the AUTO POWER ON/OFF function to off and turn off the unit.