

SIMPLE MANUAL

DVD Home Theater System

To view the instructions of advanced features,
visit <http://www.lg.com> and then download Owner's Manual.
Some of the content in this manual may differ from your unit.

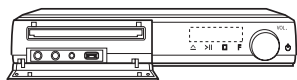
MODEL
LHD457B



www.lg.com

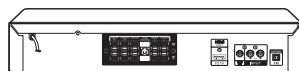


Front Panel



- MIC 1/2**..... Connect a microphone.
- PORT. IN**Connect to a Portable device.
- USB Port**..... Connect a USB device.
- △** Disc Tray Open / Close
- >||**Starts / Pauses playback.
-Stops playback.
- F**..... Changes the input source or function.
- VOL** Adjusts volume.
- ⏻**Power On / Off

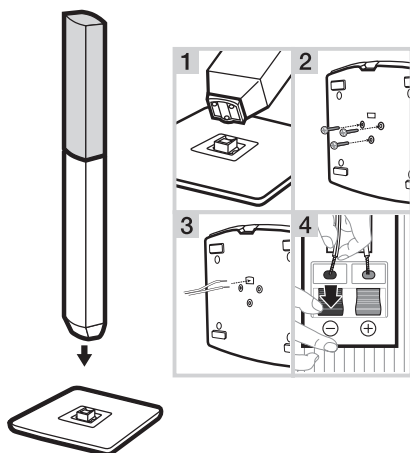
Rear Panel



- SPEAKERS** Connect to speakers.
- HDMI OUT TO TV**..... Connect to TV.
- VIDEO OUT** Connect to TV.
- AUX (L/R) INPUT**..... Connect to analogue device.
- ANTENNA FM** Connect to radio antenna.

1

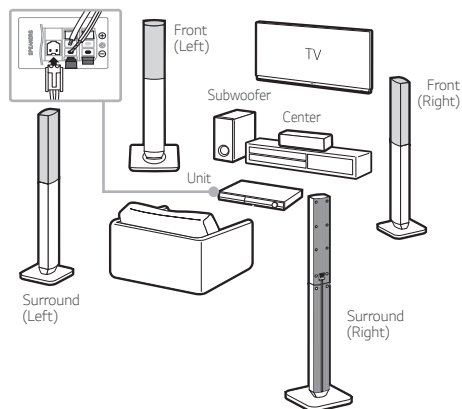
Speaker Assembling



2

Speaker Connection

- ! Speaker design and connection method may be different according to models.

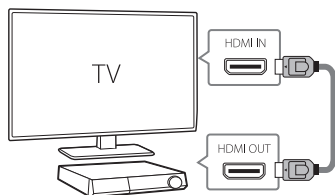


3

TV Connection

HDMI Connection

- 1 Connect the unit to the TV using HDMI cable.
- 2 Set the input selector to HDMI on the TV.
- 3 Follow the instructions on the TV screen using remote control.



4

Home Menu


Home menu appears on the TV screen. Enjoy various functions on the unit.



For more information, download the online owner's manual <http://www.lg.com>

Additional Information

Specification

Power requirements	Refer to main label.
Power consumption	Refer to main label. Networked standby : 0.5 W (If all network ports are activated.)
Dimensions (W x H x D)	Approx. 360 mm x 56 mm x 293 mm
Net Weight	Approx. 2.3 kg
Bus Power Supply (USB)	5 V  500 mA
Amplifier (Total RMS output power)	330 W

Design and specifications are subject to change without notice.

How to disconnect the wireless network connection or the wireless device

Turn off the unit by pressing the power button for more than 5 seconds.

Replacement of battery

