

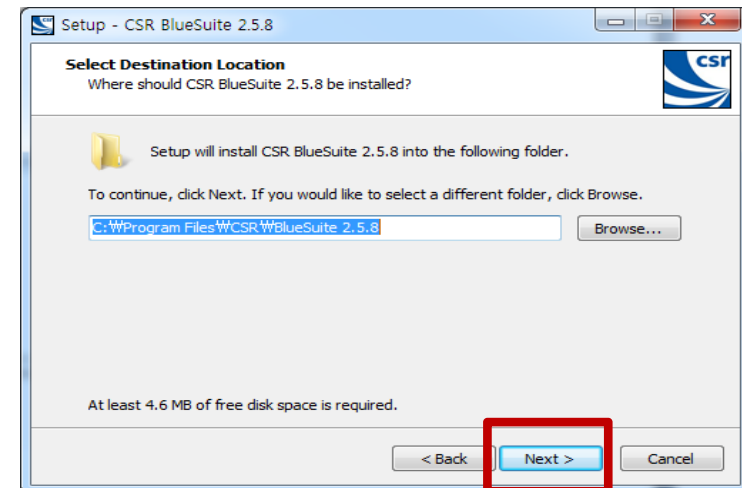
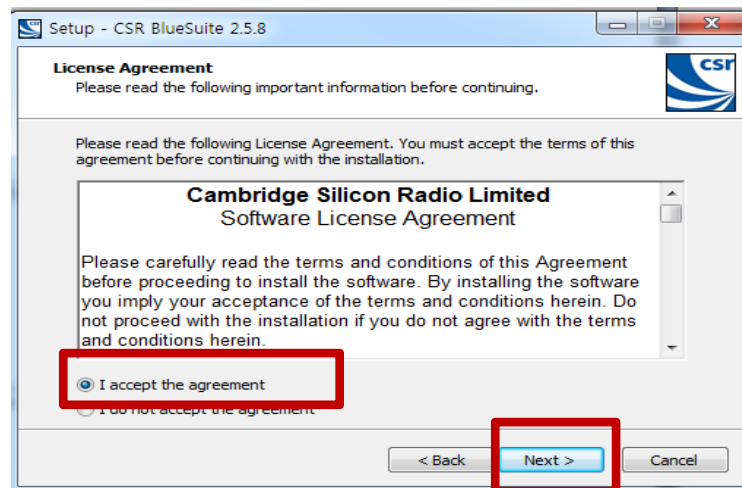
1. How to Install the PC software?

※ This software can apply for NP7860 Bluetooth speaker only.

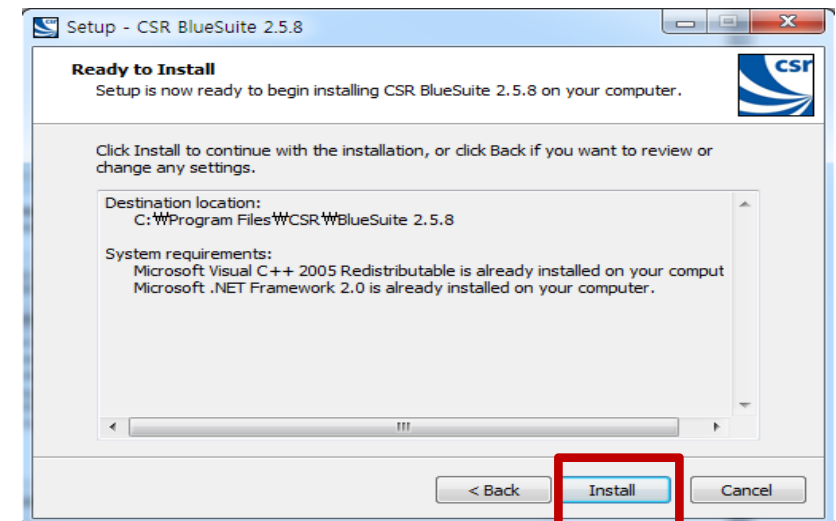
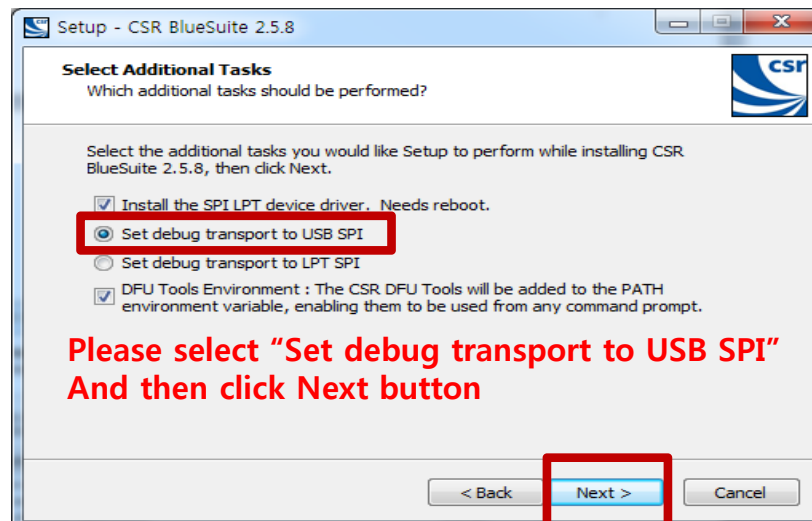
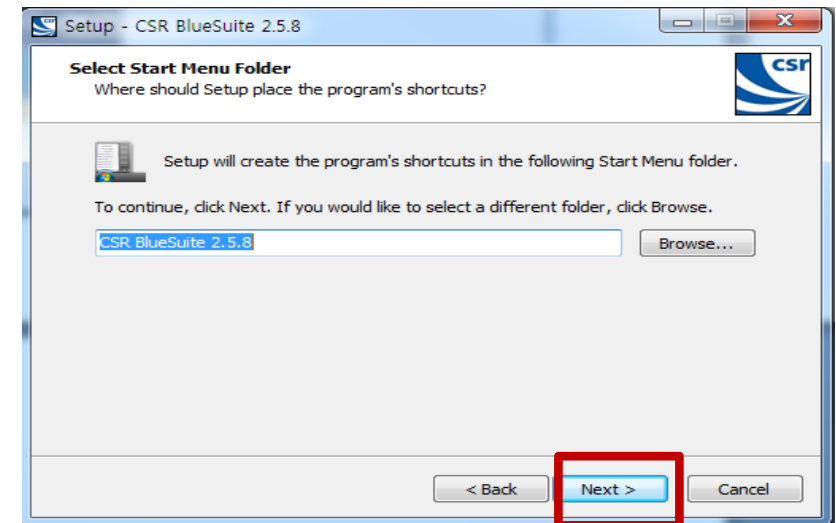
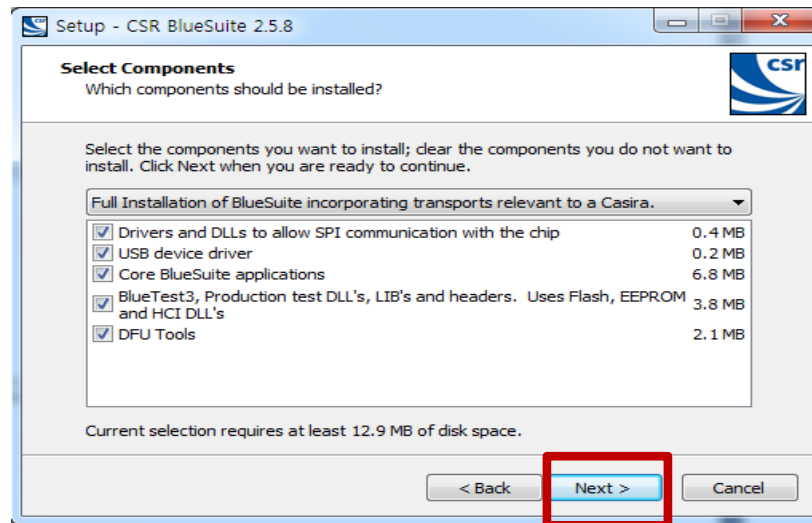
1. Unzip the "InstallBlueSuite_2_5_8_667.zip" file (You can unzip the file use by compression program)
2. After unzip the file, execute "InstallBlueSuite_2_5_8_667.exe" file and install software as follow below steps.



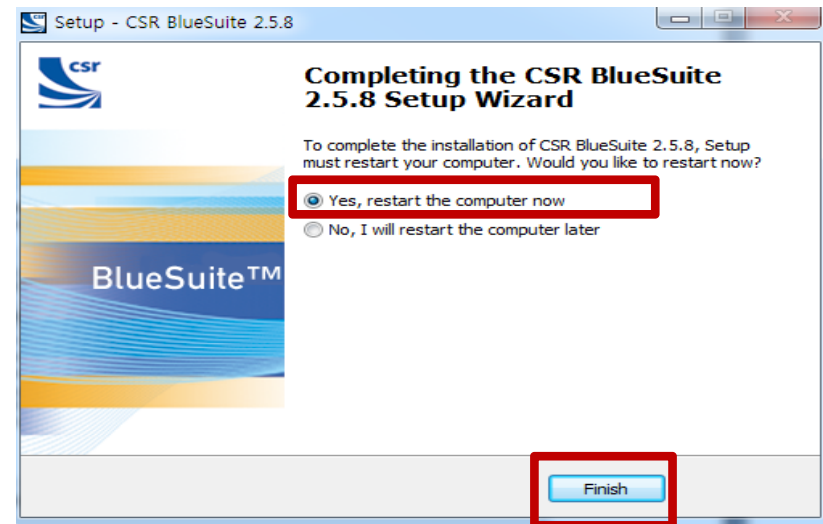
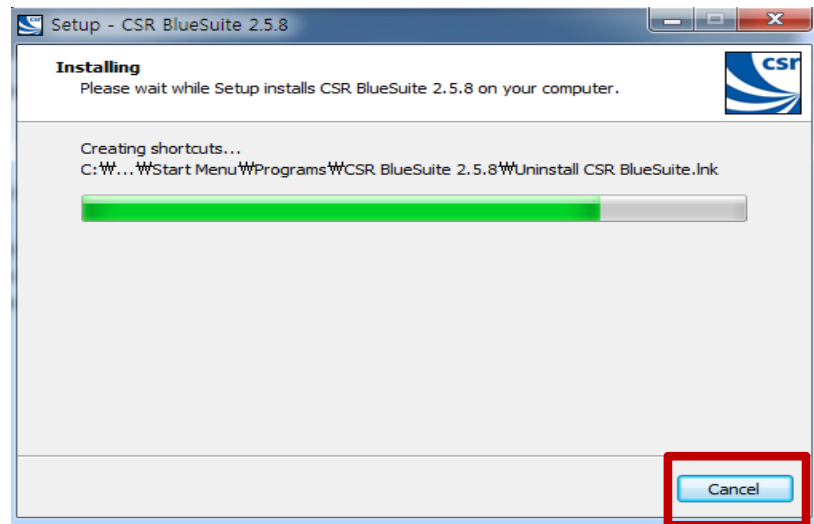
Please execute "InstallBlueSuite_2_5_8_667.exe" file



1. How to Install the PC software?



1. How to Install the PC software?



Please select "Yes, restart the computer now" and click Finish. And then your computer will be rebooting.

2. How to update the program for speaker?

You can upgrade program for Bluetooth speaker as follow below steps.

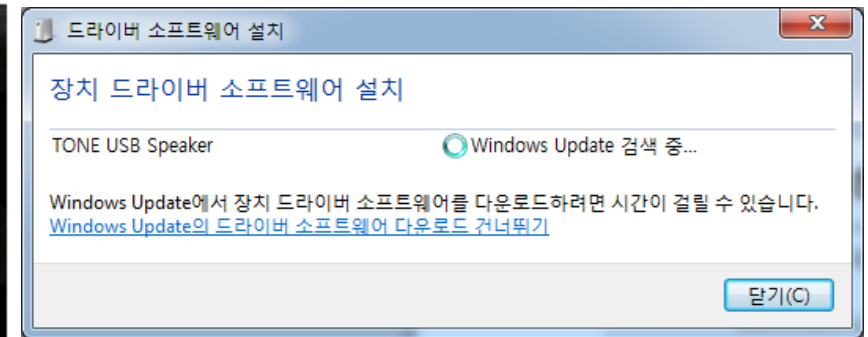
1. Touch ◀◀ button and ▶|| and ▶▶ on speaker at the same time for about 5 seconds . (Pic 1)
2. Speaker is not blinked the LED and then speaker connect in your PC to use USB cable. (Pic 2)
3. If you connect USB cable with PC and speaker for the first time, windows will find device driver, please wait a moment until installation complete device driver.(Pic 3)



(Pic 1)

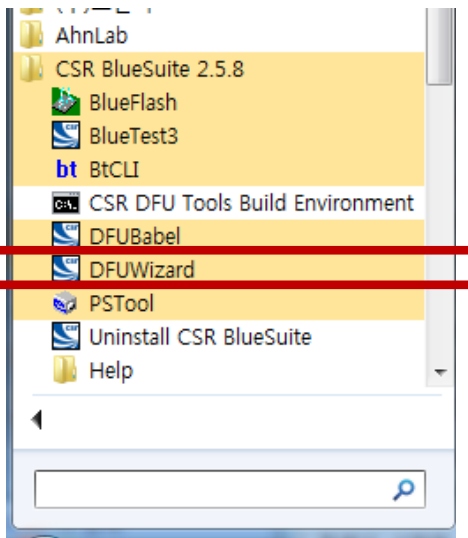


(Pic 2)



(Pic 3)

4. After installation complete device driver, please select the "DFUWizard" software in your installed programs.



2. How to update the program for speaker?

After execute DFUWizard, please follow as below to upgrade program



Select "Universal Serial Bus (USB)"



Select "CSR_ABCDEF0123456789 (BD_ADDR = ??-??)" in device



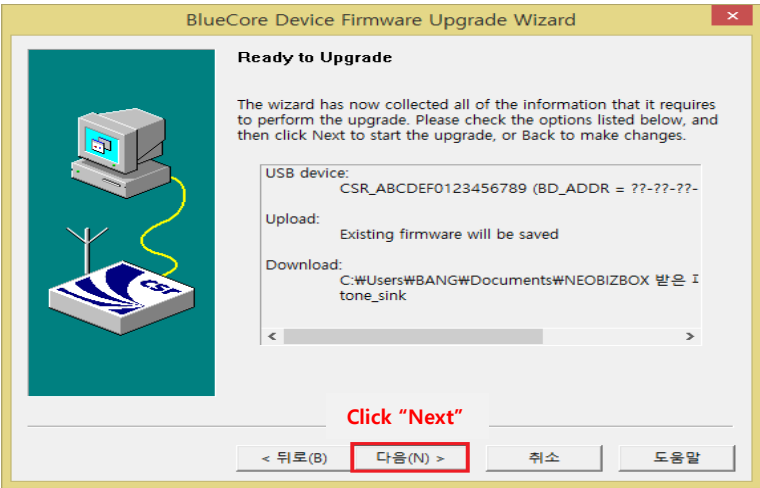
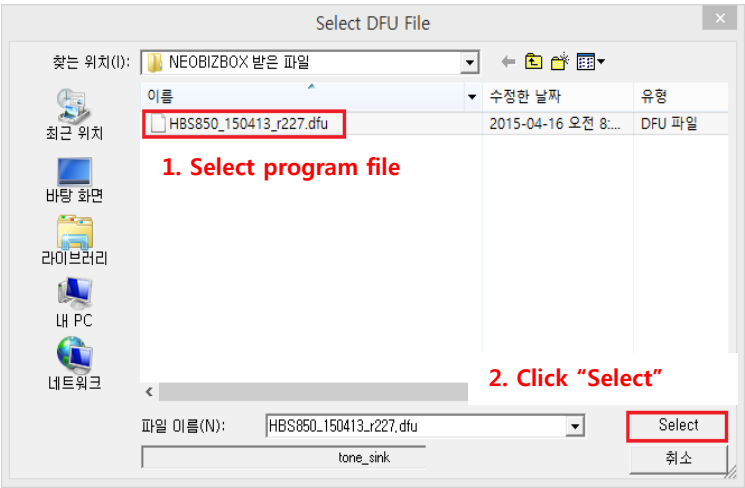
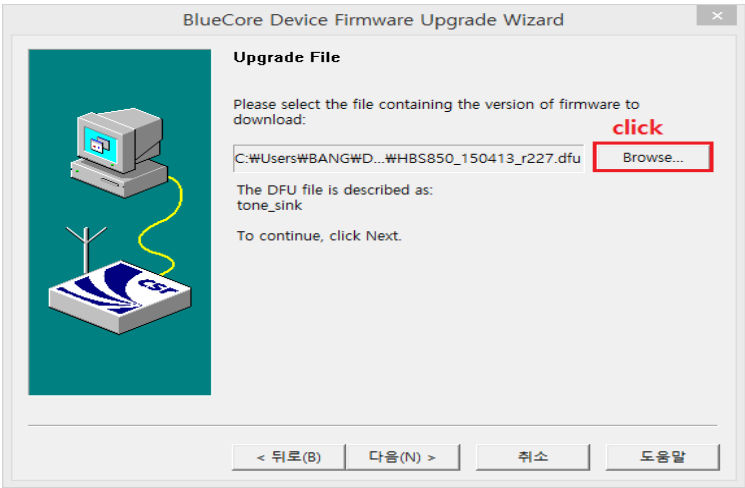
Select 1st option as below picture.



※ If not appear this picture, please go to next step.

2. How to update the program for speaker?

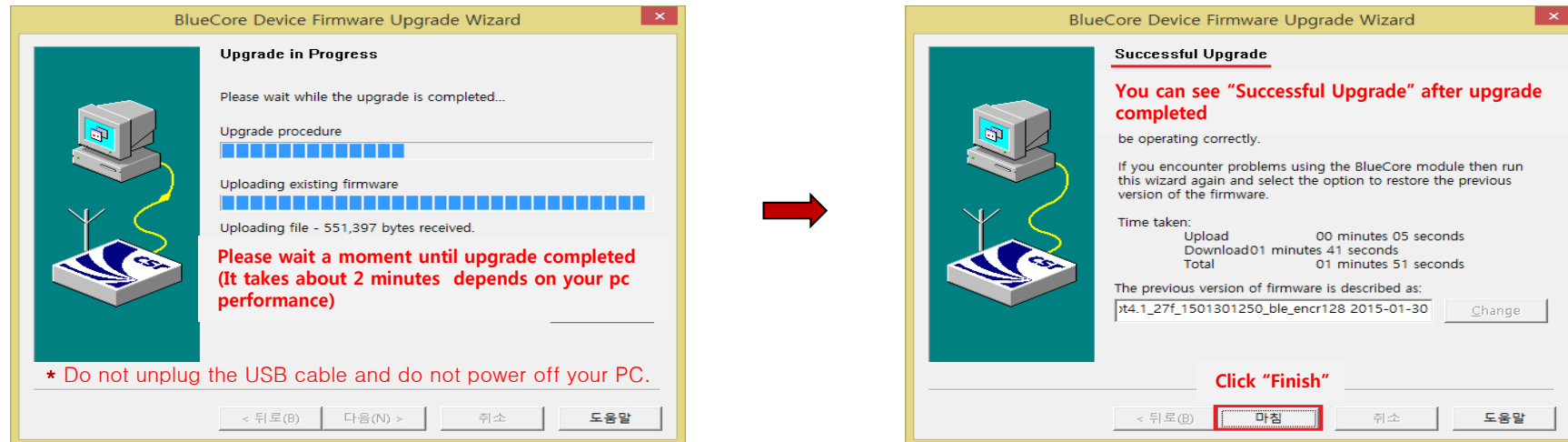
Select program file folder as " NP7860_FW_160216_r1047.dfu" which you downloaded it.



2. How to update the program for speaker?

Need to about 2 minutes to upgrade, and "Successful Upgrade" message display
You can hear "Alarm" with LED blinking after upgrade successfully.

(the necessary time to upgrade may change by performance of computer)



※ Do not disconnect USB cable or turn off PC and spekaer.
It can make serious damage to speaker

3. How to check the program version of speaker?

You can check program version of your Bluetooth speaker as follow below step

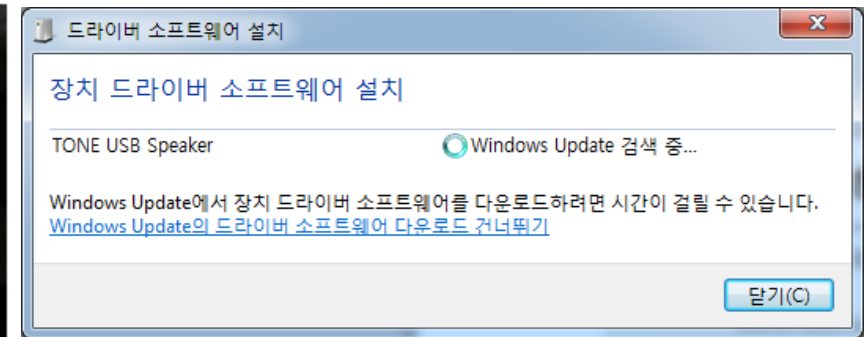
1. Touch ◀◀ button and ▶|| and ▶▶ on speaker at the same time for about 5 seconds . (Pic 1)
2. Speaker is not blinked the LED and then speaker connect in your PC to use USB cable. (Pic 2)
3. If you connect USB cable with PC and speaker for the first time, windows will find device driver, please wait a moment until installation complete device driver.(Pic 3)



(Pic 1)

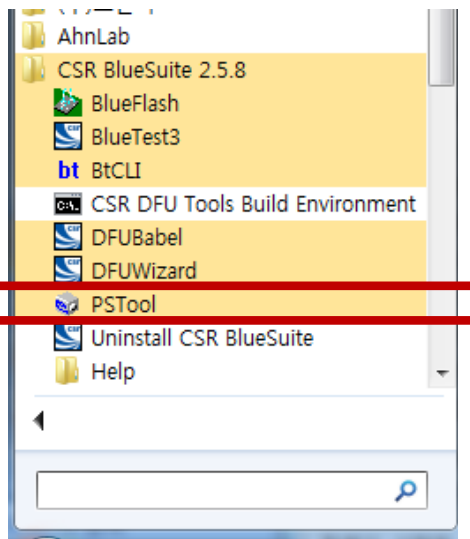


(Pic 2)



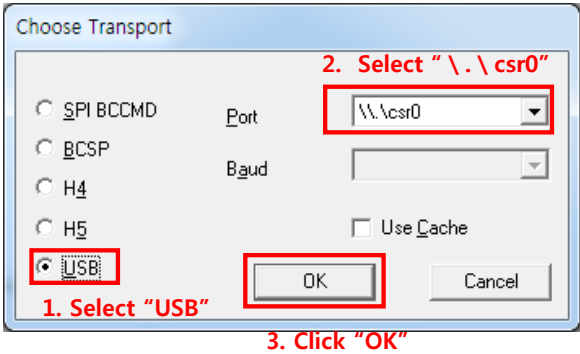
(Pic 3)

4. After installation complete device driver, please select the PSTool software in your installed programs.

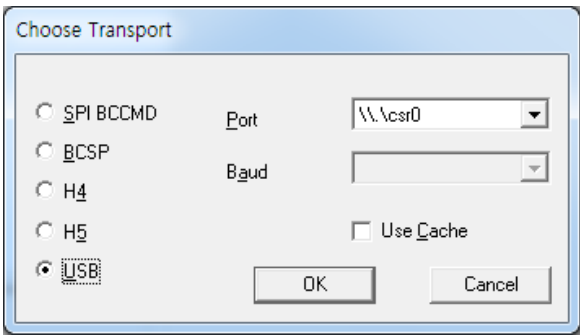


3. How to check the program version of speaker?

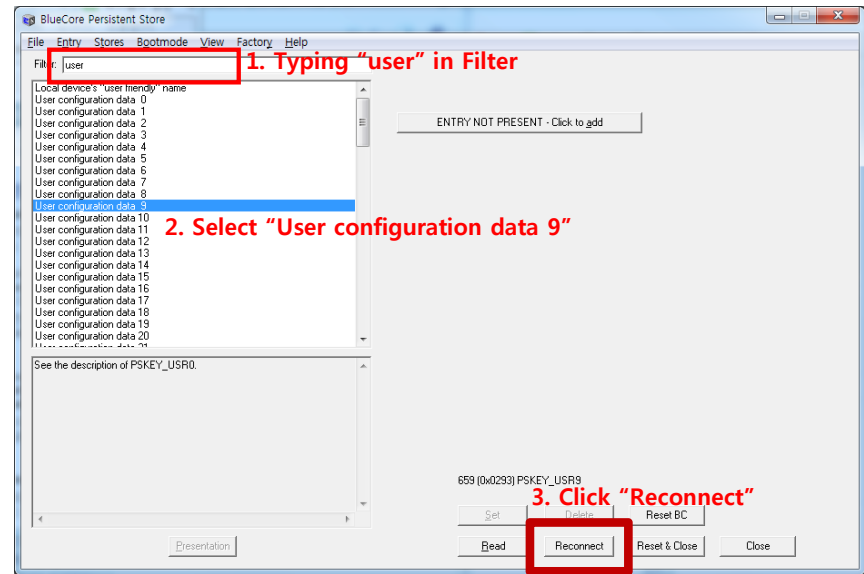
5. Select "USB",
Port : " \ . \ csr0"
and then click "OK"



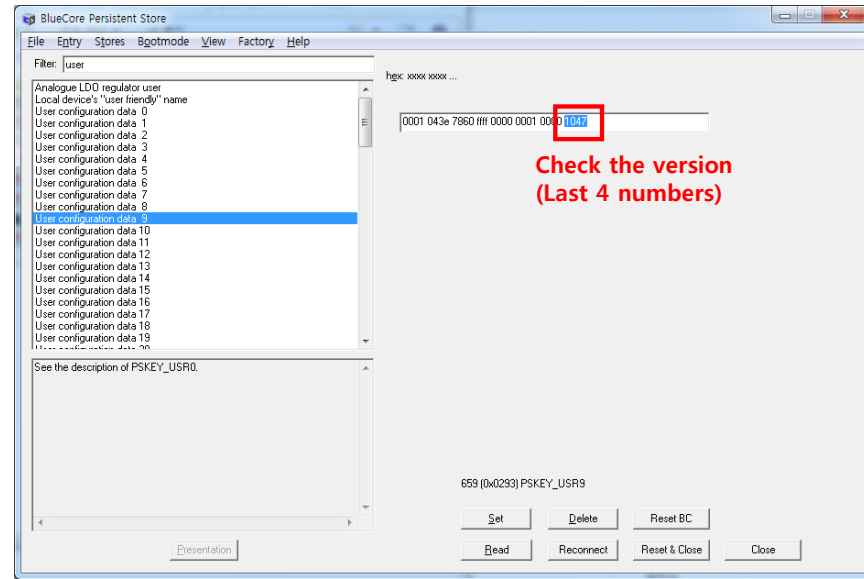
7. If appear same picture #5, please click "OK"



6. . Typing "user" in Filter and select "User configuration data 9"
and then select "Reconnect"



8. You can see program version on right window.
✂ Program version is last 4 numbers in character string



4. How to recovery the program for speaker?

Below is recovery method if the speaker make misoperation after upgrade completed.

If the speaker can not make alarm sound and LED, please make recovery the program as follow below steps.

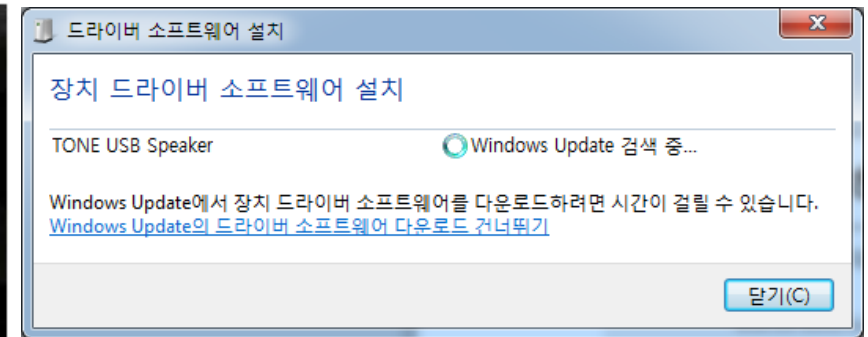
1. Touch ◀◀ button and ▶|| and ▶▶ on speaker at the same time for about 5 seconds . (Pic 1)
2. Speaker is not blinked the LED and then speaker connect in your PC to use USB cable. (Pic 2)
3. If you connect USB cable with PC and speaker for the first time, windows will find device driver, please wait a moment until installation complete device driver.(Pic 3)



(Pic 1)

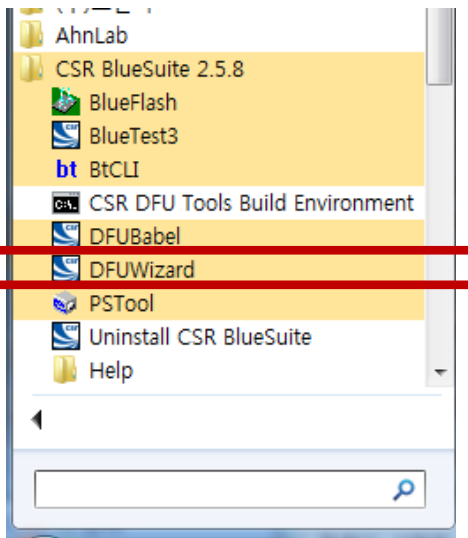


(Pic 2)



(Pic 3)

4. After installation complete device driver, please select the "DFUWizard" software in your installed programs.



4. How to recovery the program for speaker?

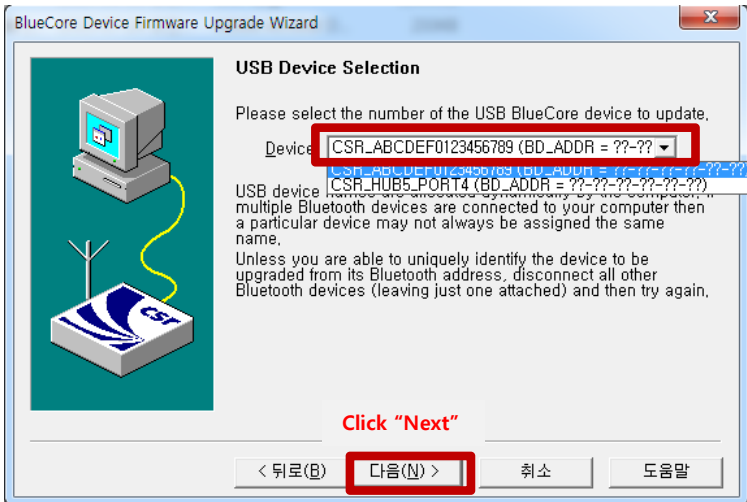
After execute DFUWizard, please follow as below to upgrade program



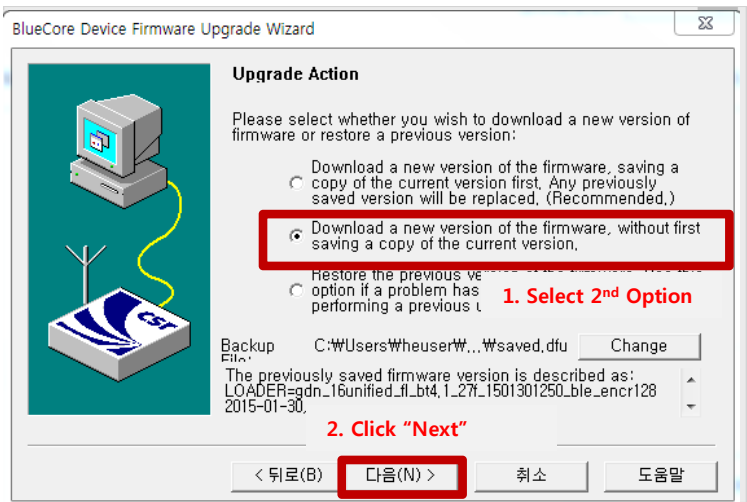
Select "Universal Serial Bus (USB)"



Select "CSR_ABCDEF0123456789 (BD_ADDR = ??-??)" in device



Select 2nd option as below picture.

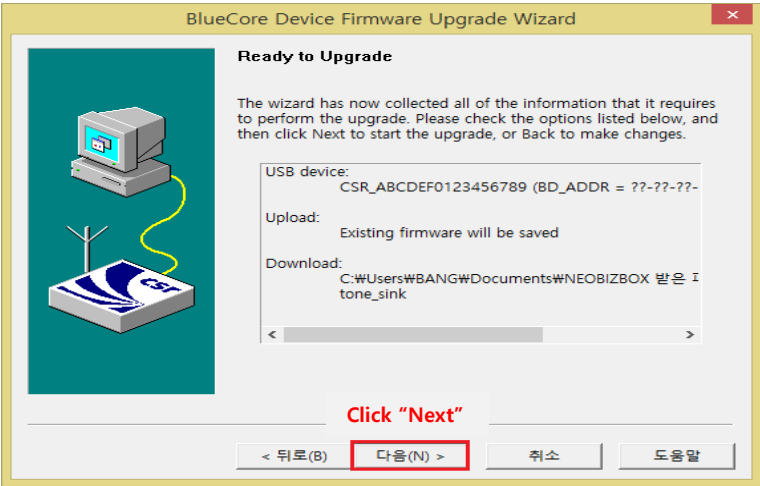
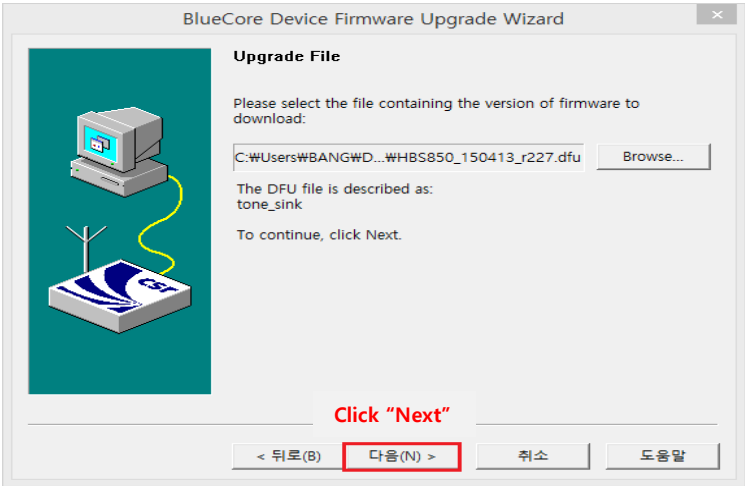
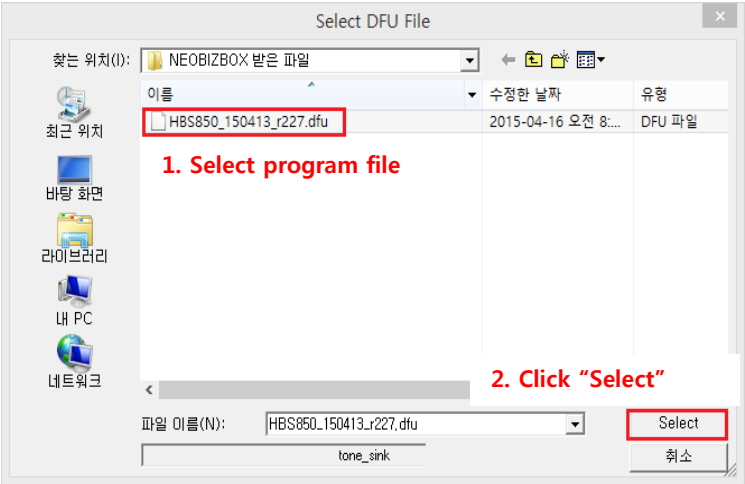
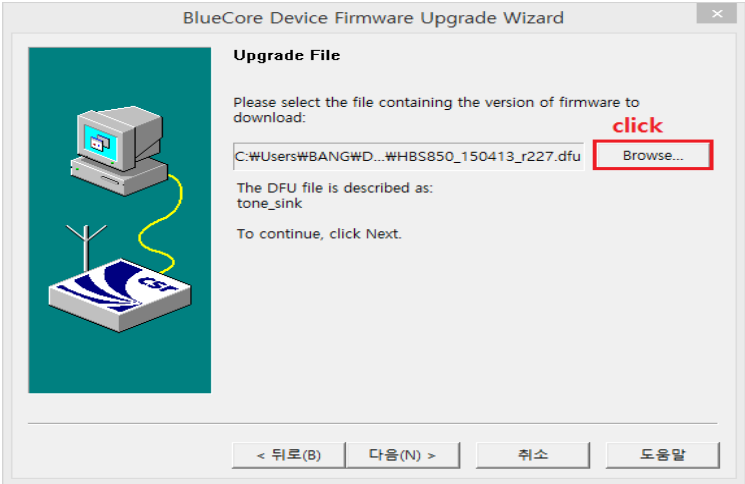


※ If not appear this picture, please go to next step.

4. How to recovery the program for speaker?

Hereafter, recovery method is same with upgrade program method.

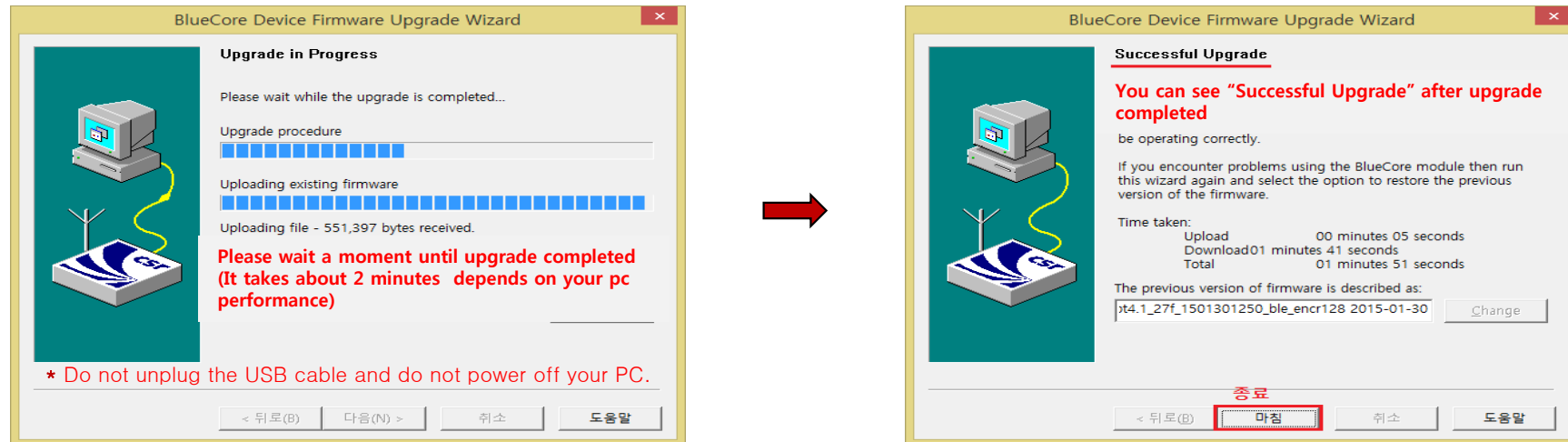
Select program file folder as " NP7860_FW_160216_r1047.dfu" which you downloaded it.



4. How to recovery the program for speaker?

Need to about 2 minutes to recovery, and "Successful Upgrade" message display
You can hear "Alarm" with LED blinking after recovery successfully.

(the necessary time to recovery may change by performance of computer)



※ Do not disconnect USB cable or turn off PC and spekaer.
It can make serious damage to speaker