



SIMPLE MANUAL

Wireless  
Sound Bar

Please read this manual carefully before operating your set and retain it for future reference.  
To view the instructions of advanced features, visit <http://www.lg.com> and then download Owner's Manual. Some of the content in this manual may differ from your unit.

FOR THE GUARANTEE TERMS & CONDITIONS, PLEASE REFER TO LAST SECTION ON THE OTHER SIDE OF THE BACK COVER.

MODELS

SJ7

SJ7-C



[www.lg.com](http://www.lg.com)

Copyright © 2017 LG Electronics Inc. All Rights Reserved.

ENGLISH



**CAUTION:** TO REDUCE THE RISK OF ELECTRIC SHOCK DO NOT REMOVE COVER (OR BACK) NO USER-SERVICEABLE PARTS INSIDE. REFER SERVICING TO QUALIFIED SERVICE PERSONNEL.



This lightning flash with arrowhead symbol within an equilateral triangle is intended to alert the user to the presence of uninsulated dangerous voltage within the product's enclosure that may be of sufficient magnitude to constitute a risk of electric shock to persons.



The exclamation point within an equilateral triangle is intended to alert the user to the presence of important operating and maintenance (servicing) instructions in the literature accompanying the product.

**WARNING:** TO PREVENT FIRE OR ELECTRIC SHOCK HAZARD, DO NOT EXPOSE THIS PRODUCT TO RAIN OR MOISTURE.

**CAUTION:** The apparatus shall not be exposed to water (dripping or splashing) and no objects filled with liquids, such as vases, shall be placed on the apparatus.

**WARNING:** Do not install this equipment in a confined space such as a book case or similar unit.

**CAUTION:** Do not use high voltage products around this product. (ex. Electrical swatter) This product may malfunction due to electrical shock.

**CAUTION:** Do not block any ventilation openings. Install in accordance with the manufacturer's instructions. Slots and openings in the cabinet are provided for ventilation and to ensure reliable operation of the product and to protect it from over heating. The openings shall be never be blocked by placing the product on a bed, sofa, rug or other similar surface. This product shall not be placed in a built-in installation such as a bookcase or rack unless proper ventilation is provided or the manufacturer's instruction has been adhered to.

**CAUTION concerning the Power Cord**

The Power Plug is the disconnecting device. In case of an emergency, the Power Plug must remain readily accessible.

This device is equipped with a portable battery or accumulator.

**Safety way to remove the battery or the battery from the equipment:** Remove the old battery or battery pack, follow the steps in reverse order than the assembly. To prevent contamination of the environment and bring on possible threat to human and animal health, the old battery or the battery put it in the appropriate container at designated collection points. Do not dispose of batteries or battery together with other waste. It is recommended that you use local, free reimbursement systems batteries and accumulators. The battery shall not be exposed to excessive heat such as sunshine, fire or the like.

**NOTICE:** For safety marking information including product identification and supply ratings, please refer to the main label on the bottom or the other surface of the product.

**CAUTION:** No naked flame sources, such as lighted candles, should be placed on the apparatus.

**For models using an adapter**

Only use the AC adapter supplied with this device. Do not use a power supply from another device or another manufacturer. Using any other power cable or power supply may cause damage to the device and void your warranty.

**CAUTION:** Internal lithium battery in the unit should not be replaced by user because of danger of explosion if battery is incorrectly replaced, and must be replaced with the same type battery by expert.

**POWER:** This unit operates on a mains supply of 100-240V~, 50/60Hz.

**Wiring:** This unit is supplied with a BS 1363 approved main plug. When replacing the fuse, always use of the same rating approved to BS 1362. Never use this plug with the fuse cover omitted. To obtain a replacement fuse cover contact your dealer. If the type of plug supplied is not suitable for the mains sockets in your home, then the plug should be removed and a suitable type fitted. Please refer to the wiring instructions below.

**Warning:** A mains plug removed from the mains lead of this unit must be destroyed. A mains plug with bared wires is hazardous if inserted in a mains socket. Do not connect either wire to the earth pin, marked with the letter E or with the earth symbol or coloured green or green and yellow. If any other plug is fitted, use same rating of fuse in the plug.

**Important:** The wires in this mains lead are coloured in accordance with the following codes:

- **BLUE: NEUTRAL, BROWN:** LIVE - As the colours of the wires in the mains lead of this unit may not correspond with the coloured marking identifying the terminals in your plug, proceed as follows: The wire which is coloured blue must be connected to the terminal which is marked with the letter N or coloured black. The wire which is coloured brown must be connected to the terminal which is marked with the letter L or coloured red.

**Disposal of your old appliance**



1. This crossed-out wheeled bin symbol indicates that waste electrical and electronic products (WEEE) should be disposed of separately from the municipal waste stream.
2. Old electrical products can contain hazardous substances so correct disposal of your old appliance will help prevent potential negative consequences for the environment and human health. Your old appliance may contain reusable parts that could be used to repair other products, and other valuable materials that can be recycled to conserve limited resources.
3. You can take your appliance either to the shop where you purchased the product, or contact your local government waste office for details of your nearest authorised WEEE collection point. For the most up to date information for your country please see [www.lg.com/global/recycling](http://www.lg.com/global/recycling)

**Disposal of waste batteries/accumulators**



Pb

1. This symbol may be combined with chemical symbols for mercury (Hg), cadmium (Cd) or lead (Pb) if the battery contains more than 0.0005% of mercury, 0.002% of cadmium or 0.004% of lead.
2. All batteries/accumulators should be disposed separately from the municipal waste stream via designated collection facilities appointed by the government or the local authorities.
3. The correct disposal of your old batteries/accumulators will help to prevent potential negative consequences for the environment, animal and human health.
4. For more detailed information about disposal of your old batteries/ accumulators, please contact your city office, waste disposal service or the shop where you purchased the product. (<http://www.lg.com/global/sustainability/environment/take-back-recycling/global-network-europe>)

**Declaration of Conformity**



Hereby, LG Electronics declares that the radio equipment type Wireless Sound Bar is in compliance with Directive 2014/53/EU. The full text of the EU declaration of conformity is available at the following internet address:

<http://www.lg.com/global/support/cedoc/cedoc#>

The use of the 5150 – 5350 MHz band is restricted to indoor use only. This restriction exists in the countries Belgium (BE), Bulgaria (BG), Czech Republic (CZ), Denmark (DK), Germany (DE), Estonia (EE), Ireland (IE), Greece (EL), Spain (ES), France (FR), Croatia (HR), Italy (IT), Cyprus (CY), Latvia (LV), Lithuania (LT), Luxembourg (LU), Hungary (HU), Malta (MT), Netherlands (NL), Austria (AT), Poland (PL), Portugal (PT), Romania (RO), Slovenia (SI), Slovakia (SK), Finland (FI), Sweden (SE), United Kingdom (UK), Switzerland (CH), Iceland (IS), Liechtenstein (LI) and Norway(NO).

For consideration of the user, this device should be installed and operated with a minimum distance of 20 cm between the device and the body.

Frequency range	Output power (Max.)
2402 to 2480 MHz	10 dBm
2412 to 2472 MHz	16 dBm
5180 to 5240 MHz	20 dBm
5736 to 5814 MHz	12 dBm
5730 to 5821 MHz	13 dBm

**Removal of waste batteries and accumulators**

(Product with embedded battery ONLY)

In case this product contains a battery incorporated within the product which cannot be readily removed by endusers, LG recommends that only qualified professionals remove the battery, either for replacement or for recycling at the end of this product's working life. To prevent damage to the product, and for their own safety, users should not attempt to remove the battery and should contact LG Service Helpline, or other independent service providers for advice.

Removal of the battery will involve dismantling of the product case, disconnection of the electrical cables/contacts, and careful extraction of the battery cell using specialized tools. If you need the instructions for qualified professionals on how to remove the battery safely, please visit <http://www.lge.com/global/sustainability/environment/take-back-recycling>.



**Technology with the human touch  
GUARANTEE**

- LG Electronics U.K. Ltd. will provide the following services in order to expedite this Guarantee.

1. All faulty components which fail due to defective manufacture will be replaced free of charge for a period of 12 months from the original date of purchase.

2. The dealer (or his service agent) who sold the product will be reimbursed for any labour provided in the repair of this LG equipment, for a period of 12 months from the original date of purchase. These claims must be made in accordance with the published scale of service charges and relevant claims procedure.

**PLEASE NOTE:**

A. The dealer may restrict the guarantee to the original purchaser.

B. The dealer is not obliged to carry out service under guarantee if unauthorized modifications are made to the apparatus, or if non standard components are used or if the serial number of the apparatus is removed, defaced, misused, or altered.

C. Any claims made under guarantee must be directed to the dealer from whom the equipment was originally purchased. The dealer may, before carrying out service under guarantee, require a receipted account as evidence of the date of purchase.

D. We respectfully point out that your dealer is not obligated to replace batteries if they become exhausted or worn in use.

E. Aerial alignment and consumer control adjustments are not covered by this guarantee.

This guarantee does not affect your statutory rights.

- REQUIREMENTS TO MAINTAIN WARRANTY COVERAGE:  
RETAIN YOUR RECEIPT TO PROVE DATE OF PURCHASE. A COPY OF YOUR RECEIPT MUST BE SURRENDERED AT THE TIME GUARANTEE SERVICE IS PROVIDED.

- Product Registration Card :  
It is helpful to complete at least your name, address, phone, model & serial numbers and return it. This will enable LG to assist you in the future should you lose your receipt, your units be stolen, or should modifications be necessary.

- To obtain information or assistance:  
Call UK: 0344 847 5454 IE: 01 686 9454

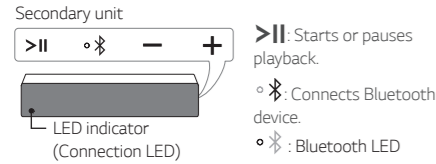
MODEL NO.*	SERIAL NO.*	DATE OF PURCHASE.*

**In all cases of difficulty - consult your LG dealer from whom the product was purchased**

LGEUK Website : [www.lg.com/uk](http://www.lg.com/uk)  
(Service website : [www.lg.com/uk/support](http://www.lg.com/uk/support))

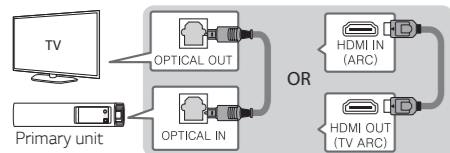


## Front/Side Panel



## TV Connection

Connect with the Sound Bar and TV using Optical or HDMI ARC.

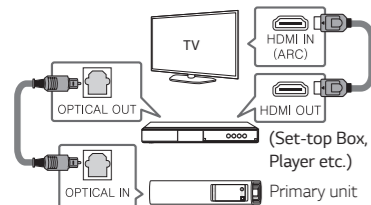


- 1 Connect the sound bar to the TV using Optical or HDMI cable.
- 2 Set up [External Speaker (Optical)] or [External Speaker (HDMI ARC)] on your TV setting menu.

- HDMI connection is unavailable if your TV does not support HDMI ARC.
- If this unit is connected by OPTICAL and ARC at the same time, the ARC signal is a high priority.

## Additional Device Connection

- 1 Connect to the external device. It is recommended to connect as follows.



- 2 Set the input source by pressing **F** on the remote control or unit repeatedly.

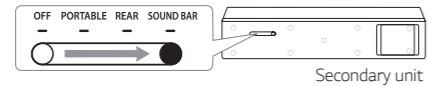
## Speaker Connection

You can use speaker connection in the SOUND BAR or REAR usage mode only.

### Secondary unit connection

Place the Secondary unit near the Primary unit and follow steps below.

- 1 Connect the power cord of Secondary unit and Primary unit to the outlet.
- 2 Turn on the Primary unit by pressing **Power**. Turn on the Secondary unit by switching the Usage Mode Switch to REAR or SOUND BAR.



The Primary unit and Secondary unit will be **automatically** connected. The Secondary unit's white LED turns on.

### Secondary unit Connection Manually

If the Secondary unit does not make sound, try to connect manually.

- 1 Turn off the Primary unit.
- 2 Press **PAIRING** button on the rear of the Secondary unit. The white LED on the front of Secondary unit blinks.
- 3 Turn on the Primary unit.
- 4 Pairing is completed. The white LED on the front of Secondary unit turns on.

### Subwoofer connection

Place the wireless subwoofer near the speaker and follow steps below.

- 1 Connect the power cord of wireless subwoofer and sound bar to the outlet.
- 2 Turn on the Primary unit. : The sound bar and wireless subwoofer will be **automatically** connected. The subwoofer's green LED turns on.

### Subwoofer Connection Manually

If the subwoofer does not make sound, try to connect manually.

- 1 Press **Pairing** button on the rear of the wireless subwoofer. The green LED blinks quickly.
- 2 Turn on the Primary unit.
- 3 Pairing is completed. The green LED turns on.

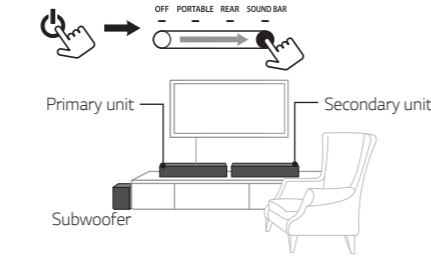
## Positioning the Unit

### SOUND BAR usage mode

Primary unit and Secondary unit play as FRONT L/ R(Left/Right) speaker like a sound bar.

Turn on the Primary unit by pressing **Power**. Turn on the Secondary unit by switching the Usage Mode Switch to SOUND BAR.

When disconnecting AC Adapter of Secondary unit, the audio output may be reduced.

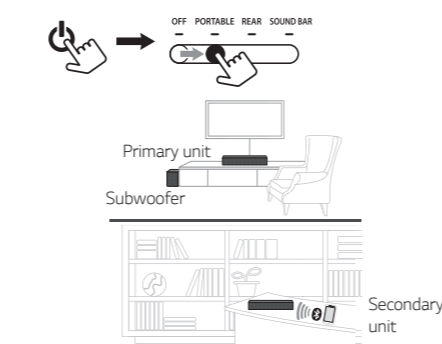


### PORTABLE usage mode

You can play Secondary unit without Primary unit.

**Primary unit and Secondary unit play separately with each connected device.**

Turn on the Secondary unit by switching the Usage Mode Switch to PORTABLE.

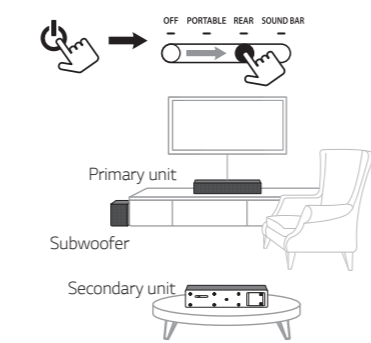


### REAR usage mode

Primary unit plays as front speaker and Secondary unit plays as rear surround speaker.

Turn on the Primary unit by pressing **Power**. Turn on the Secondary unit by switching the Usage Mode Switch to REAR.

When disconnecting AC Adapter of Secondary unit, the audio output may be reduced.



### BLUETOOTH Connection (Secondary unit)

Select LG SJ7-2ND (xx) from device list to pair your mobile device.

When successfully Paired, Bluetooth LED turns on white with beep sound.

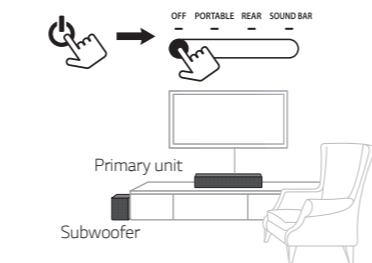
### BLUETOOTH Connection (Primary unit)

- 1 Press **F** button to select the BT (Bluetooth) Function.
- 2 Select LG SJ7 (xx) from device list to pair your mobile device. When successfully Paired, "PAIRED" Your device's name "BT" appears in the display window in this order.

### OFF usage mode

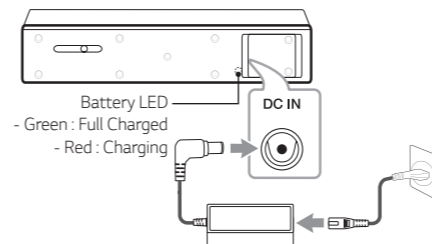
Primary unit plays alone without Secondary unit.

Turn on the Primary unit by pressing **Power**. Turn on the Secondary unit by switching the Usage Mode Switch to OFF.

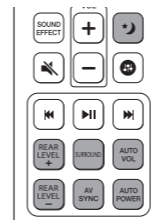


## Charging the Unit

Before using it, charge the battery by connecting the AC Adapter. (Secondary unit only)



## Remote control



**Power**: Turns down the volume at night.

**REAR LEVEL** +/-: Adjusts rear level of Secondary unit on the REAR usage mode.

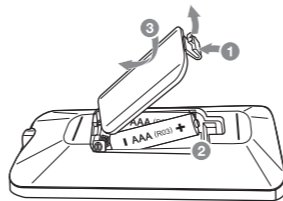
**SURROUND**: Turns on/off Surround function.

**AV SYNC**: Synchronizes the audio and video.

**AUTO VOL**: Automatically adjusts too loud or low output volume level appropriately.

**AUTO POWER**: Automatically turns on by an input source.

### Replacement of battery



### About Ferrite Core (Optional)



Wind AC adapter cable around the ferrite core once. Connect the AC adapter applied a ferrite core to the secondary unit.

## Additional Information

### Specification

Power consumption	Refer to the main label. Networked standby : 1.5 W (If all network ports are activated.)
AC adapter	<ul style="list-style-type: none"><li>• Model : DA-38A25</li><li>• Manufacturer : Asian Power Devices Inc.</li><li>• Input : 100 - 240 V ~ 50 - 60 Hz 1.2 A</li><li>• Output : 25 V --- 1.52 A</li></ul>
Dimensions (W x H x D)	Approx. 340 mm x 74 mm x 110 mm With foot (In each of Primary unit and Secondary unit)
Amplifier (Total RMS Output power)	320 W RMS (In state of connecting AC Adapter).
Operating time (Battery)	Approx. 4 hours (Varies by volume level and audio content.)

Design and specifications are subject to change without notice.

### How to disconnect the wireless network connection or the wireless device

Set up the AUTO POWER ON/OFF function to off and turn off the unit.

### OPEN SOURCE SOFTWARE NOTICE INFORMATION

To obtain the source code under GPL, LGPL, MPL, and other open source licenses, that is contained in this product, please visit <http://opensource.lge.com>.

In addition to the source code, all referred license terms, warranty disclaimers and copyright notices are available for download.

LG Electronics will also provide open source code to you on CD-ROM for a charge covering the cost of performing such distribution (such as the cost of media, shipping and handling) upon email request to [opensource@lge.com](mailto:opensource@lge.com). This offer is valid for three (3) years from the date on which you purchased the product.

