



## SIMPLE MANUAL

# Mini Hi-Fi System

Please read this manual carefully before operating your set and retain it for future reference.

To view the instructions of advanced features, visit <http://www.lg.com> and then download Owner's Manual.

Some of the content in this manual may differ from your unit.

MODEL

CL65



MFL71101812  
1904\_Rev01

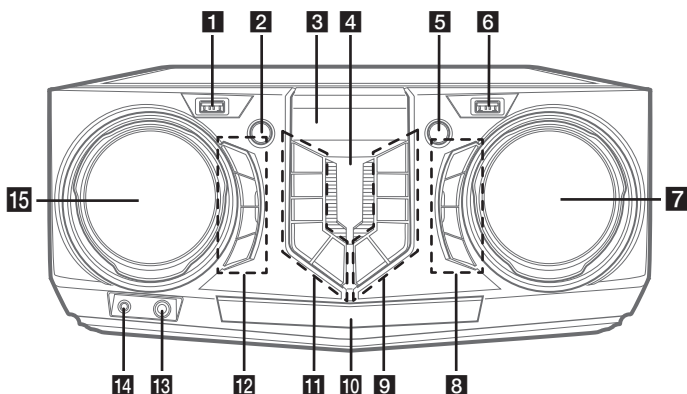
ENGLISH	DEUTSCH	FRANÇAIS	NEDERLANDS	ITALIANO	ESPAÑOL	ΕΛΛΗΝΙΚΑ	PORTUGUÊS	MAGYAR
ČESKY	SLOVENČINA	POLSKI	ROMÂNĂ	LATVIEŠŪ	HRVATSKI	SRPSKI	БЪЛГАРСКИ	МАКЕДОНСКИ
SLOVENŠČINA	SHQIP	BOSANSKI	SVENSKA	DANSK	NORSK	SUOMI		

[www.lg.com](http://www.lg.com)

Copyright © 2019 LG Electronics Inc. All Rights Reserved.



## Front Panel



- 1** USB 1 Port  
You can play sound files by connecting the USB device.
- 2** (Standby)  
Turns the power on or off.
- 3** Display window
- 4** (Remote sensor)
- 5** **TWIN**  
Connects two speakers for TWIN mode in WIRELESS PARTY LINK.
- 6** USB 2 Port  
You can play sound files by connecting the USB device.

- 7** **VOLUME**
  - Adjust speaker volume.
  - Adjusts microphone volume.
- 8** **MIC VOL** (Microphone volume)  
Selects microphone volume mode.

### **MIC** (Microphone) **ECHO**

Selects ECHO mode.

### **VOICE CANCELLER**

You can reduce the vocal tones during music playback from various input sources.

### **VOCAL EFFECTS**

Selects various vocal effects mode.

- 9** **F** (Function)  
Selects the function and input source.
  - (Play/Pause)
    - Starts or pauses playback.
    - Selects stereo/mono.
  - (Skip/Search)
    - Skips forward.
    - Searches for a section within a track/file.
    - Selects the radio stations.

### **KEY CHANGER (#/b)**

Changes the key to suit your vocal range.

- 10** Disc tray
- 11** **USB REC / DEMO**
  - Records to USB.
  - Stops Recording.
  - In power off status, if you press **USB REC / DEMO**, show DEMO mode.
- (Stop) / **RDS**
  - Stops playback or cancels DELETE function.
  - Radio Data System
- (Skip/Search)
  - Skips backward.
  - Searches for a section within a track/file.
  - Selects the radio stations.
- (Open/Close)  
Opens and closes the disc tray.
- AUTO DJ**  
Selects the AUTO DJ mode.

## 12 LIGHTING

Selects the lighting mode.

### SPECIAL EQ / BASS BLAST (or BASS BLAST+)

- Chooses special equalizer.
- Press and hold to select BASS (or BASS+) effect directly.

### SEARCH

Moves to folder or file in selection mode.

### OK

Selects a folder when searching a file.

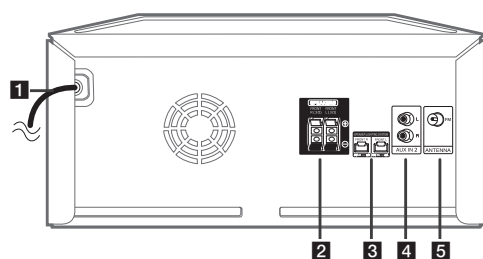
## 13 MIC (Microphone) jack

## 14 AUX IN 1 jack

## 15 EQUALIZER / SEARCH & MULTI

- Chooses sound impressions.
- Searches a folder or a file.
- Selects the lighting effects.

## Rear Panel



### 1 Power cord

### 2 SPEAKERS terminals

### 3 SPEAKER LIGHTING SYSTEM

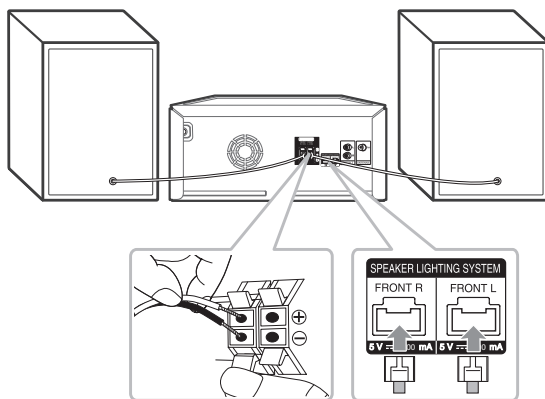
Connect the speaker lighting cables.

### 4 AUX IN 2 (L/R)

Connect an auxiliary device.

### 5 ANTENNA (FM)

## Speaker Connection



## Controller App



Download the **LG XBOOM** App to your device.  
(Android only)


## LG Sound Sync (Wireless)



For more information, download the online owner's manual. <http://www.lg.com>

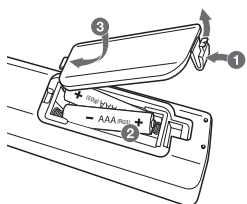
## Additional Information

### Specifications

Power Requirements	Refer to the main label on the unit.
Power Consumption	Refer to the main label on the unit. Networked standby : 0.5 W (If all network ports are activated.)
Dimensions (W x H x D)	Approx. 350.0 mm x 163.0 mm x 251.0 mm
Bus Power Supply (USB)	5 V  500 mA
Amplifier (Total RMS output power)	950 W RMS

Design and specifications are subject to change without notice.

### Replacement of battery



### Note

- Do not look directly at the light emitting part when the LIGHTING is turned on.
- If the illumination brightness is glaring, switch on the room lights or turn off the LIGHTING of the unit.

### How to disconnect the wireless network connection or the wireless device

Turn off the unit by pressing the power button for more than 5 seconds.

### Declaration of Conformity



Hereby, LG Electronics declares that the radio equipment type Mini Hi-Fi System is in compliance with Directive 2014/53/EU. The full text of the EU declaration of conformity is available at the following internet address:

<http://www.lg.com/global/support/cedoc/cedoc#>

For consideration of the user, this device should be installed and operated with a minimum distance of 20 cm between the device and the body.

Frequency range	Output power (Max.)
2402 to 2480 MHz	10 dBm