


Additional Information

Specification

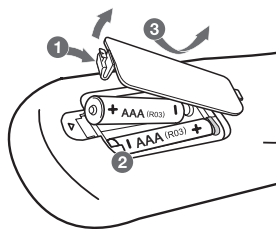
Power requirements	Refer to main label.
Power consumption	Refer to main label. Networked standby : 0.5 W (If all network ports are activated.)
Dimensions (W x H x D)	Approx. 360 mm x 58 mm x 298.5 mm
Net Weight	Approx. 2.46 kg
Bus Power Supply (USB)	5 V  500 mA
Amplifier (Total RMS output power)	1,000 W

Design and specifications are subject to change without notice.

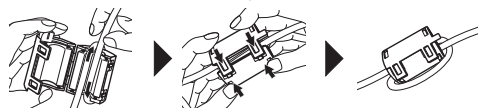
How to disconnect the wireless network connection or the wireless device

Turn off the unit by pressing the power button for more than 5 seconds.

Replacement of battery



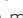
About Ferrite Core (Optional)



Wind HDMI cable around the ferrite core.

POWER: This unit operates on a mains supply of 200-240V~, 50/60Hz.

Wiring: This unit is supplied with a BS 1363 approved main plug. When replacing the fuse, always use of the same rating approved to BS 1362. Never use this plug with the fuse cover omitted. To obtain a replacement fuse cover contact your dealer. If the type of plug supplied is not suitable for the mains sockets in your home, then the plug should be removed and a suitable type fitted. Please refer to the wiring instructions below.

Warning: A mains plug removed from the mains lead of this unit must be destroyed. A mains plug with bared wires is hazardous if inserted in a mains socket. Do not connect either wire to the earth pin, marked with the letter E or with the earth symbol  or coloured green or green and yellow. If any other plug is fitted, use same rating of fuse in the plug.

Important: The wires in this mains lead are coloured in accordance with the following codes:

- **BLUE: NEUTRAL, BROWN: LIVE** - As the colours of the wires in the mains lead of this unit may not correspond with the coloured marking identifying the terminals in your plug, proceed as follows: The wire which is coloured blue must be connected to the terminal which is marked with the letter N or coloured black. The wire which is coloured brown must be connected to the terminal which is marked with the letter L or coloured red.



SIMPLE MANUAL DVD Home Theater System

To view the instructions of advanced features, visit <http://www.lg.com> and then download Owner's Manual. Some of the content in this manual may differ from your unit.

MODEL
LHD655BT



www.lg.com

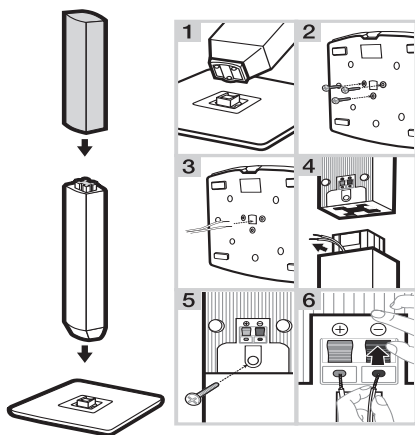


Front Panel

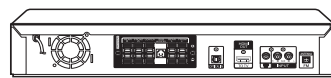


MIC 1/2 Connect a microphone.
PORT. IN Connect to a Portable device.
USB Port Connect a USB device.
△ Disc Tray Open / Close
>|| Starts / Pauses playback.
□ Stops playback.
F Changes the input source or function.
- / + Adjusts volume.
⏻ / I Power On / Off

1 Speaker Assembling



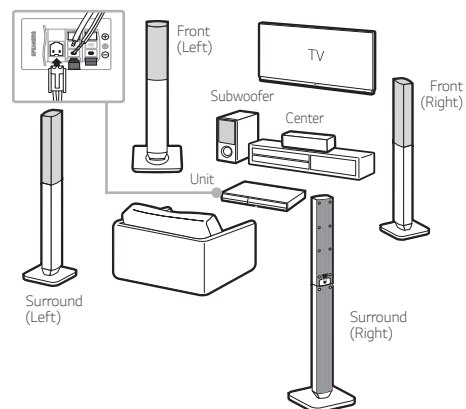
Rear Panel



SPEAKERS Connect to speakers.
OPTICAL IN Connect to digital device.
HDMI OUT TO TV Connect to TV.
VIDEO OUT Connect to TV.
AUX (L/R) INPUT Connect to analogue device.
ANTENNA FM Connect to radio antenna.

2 Speaker Connection

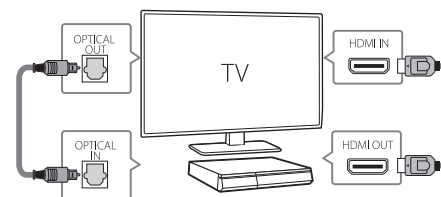
! Speaker design and connection method may be different according to models.



3 TV Connection

HDMI & Optical Connection

- 1 Connect the Unit to the TV using HDMI & Optical cable.
- 2 Set the input selector to HDMI on the TV.
- 3 Set up [External Speaker (Optical)] on your TV setting menu.
- 4 Follow the instructions on the TV screen using remote control.



4 Home Menu

Home menu appears on the TV screen. Enjoy various functions on the unit.



For more information, download the online owner's manual. <http://www.lg.com>