



MICRO COMPONENT SYSTEM

OWNER'S MANUAL

**MODELS : FR-X4AD, FJ-X4,
FE-X4E**

Please read this manual carefully before operating your set.
Retain it for future reference.

**Designs and specifications are subject to change without notice
for improvement.**



P/NO.:3828SND042H

OWNER'S MANUAL

	CAUTION RISK OF ELECTRIC SHOCK DO NOT OPEN	
<p style="text-align: center;">CAUTION: TO REDUCE THE RISK OF ELECTRIC SHOCK DO NOT REMOVE COVER(OR BACK). NO USER SERVICEABLE PARTS INSIDE. REFER SERVICING TO QUALIFIED SERVICE PERSONNEL.</p>		

Explanation Graphical Symbols:



The lightning flash with arrowhead symbol, within an equilateral triangle is intended to alert the user to the presence of uninsulated dangerous voltage within the product's enclosure that may be of sufficient magnitude to constitute a risk of electric shock to persons.



The exclamation point within an equilateral triangle is intended to alert the user to the presence of important operating and maintenance (servicing) instructions in the literature accompanying the appliance.

<p>CAUTION Use of controls or adjustments or performance of procedures other than those specified herein may result in hazardous radiation exposure.</p>

<p>WARNING: TO REDUCE THE RISK OF FIRE OF ELECTRIC SHOCK, DO NOT EXPOSE THIS APPLIANCE TO RAIN OR MOISTURE.</p>
--

<p>Laser component in this product is capable of emitting radiation exceeding the limit for Class 1.</p>
--

<p>CAUTION: INVISIBLE LASER RADIATION WHEN OPEN AND INTERLOCKS DEFEATED. AVOID EXPOSURE TO BEAM.</p>
<p>WARNING: OSYNLIG LASERSTRÅLNING NÄR DENNA DEL ÄR ÖPPNAD STRÅLEN ÄR FARLIG.</p>
<p>ATTENTION: Quand l'appareil est ouvert, ne pas s'exposer aux radiations invisibles du faisceau laser.</p>

To avoid electrical shock, do not open the cabinet. Refer servicing to qualified personnel only.

<table style="width: 100%; border-collapse: collapse;"> <tr> <td style="width: 15%;">CLASS 1</td> <td>LASER PRODUKT</td> </tr> <tr> <td>KLASSE 1</td> <td>LASER PRODUKT</td> </tr> <tr> <td>LUOKAN 1</td> <td>LASER LAITE</td> </tr> <tr> <td>KLASS 1</td> <td>LASER APPARAT</td> </tr> <tr> <td>CLASSE 1</td> <td>PRODUIT LASER</td> </tr> </table>	CLASS 1	LASER PRODUKT	KLASSE 1	LASER PRODUKT	LUOKAN 1	LASER LAITE	KLASS 1	LASER APPARAT	CLASSE 1	PRODUIT LASER	<p>This label is located on the interior.</p>
CLASS 1	LASER PRODUKT										
KLASSE 1	LASER PRODUKT										
LUOKAN 1	LASER LAITE										
KLASS 1	LASER APPARAT										
CLASSE 1	PRODUIT LASER										

(FOR THE CUSTOMERS IN EUROPE)
If this product is marked with the CE-symbol, it means which is conformed to EMC regulation 89/336/EEC.

This Compact Disc player is classified as a CLASS 1 LASER product. The CLASS 1 LASER PRODUCT label is located on the exterior.

(FOR CUSTOMERS IN CANADA)
CAUTION: TO PREVENT ELECTRIC SHOCK, DO NOT USE THIS (POLARIZED) PLUG WITH AN EXTENSION CORD, RECEPTACLE, OR OTHER OUTLET UNLESS THE BLADES CAN BE FULLY INSERTED TO PREVENT BLADE EXPOSURE.
This class B digital apparatus meets all requirements of the Canadian Interference-Causing Equipment Regulations.

WARNING:
SHOCK HAZARD - DO NOT OPEN
MISE EN GARDE:

<p>Note to CATV system Installer: This reminder is provided to call the CATV system installer's attention to Article 820-40 of the NEC that provides guidelines for proper grounding and, in particular, specifies that the cable ground shall be connected to the grounding system of the building, as close to the point of cable entry as practical.</p>
--

(FOR CUSTOMERS IN THE UNITED STATES OF AMERICA)
NOTE:

The interference potential to the device.
This equipment generates and uses radio frequency energy and if not installed and used properly, that is in strict accordance with the manufacturer's instructions, may cause interference to radio and television reception. It has been type tested and found to comply with the limits for a Class B computing device in accordance with the specifications in subparts J of Part 15 of FCC Rules, which are designed to provide reasonable protection against such interference in a residential installation. However, there is no guarantee that interference will not occur in a particular installation. If this equipment does cause interference to radio or television reception, which can be determined by turning the equipment off and on, the user is encouraged to try to correct the interference by one of more of the following measures:

- Reorients or relocate the receiving antenna.
- Increase the separation between the equipment and receiver.
- Connect the equipment into an outlet on a circuit different from that to which the receiver is connected.
- Consult the dealer or an experienced radio/TV technician for help.

(FOR CUSTOMERS IN THE UNITED KINGDOM)
WIRING INSTRUCTIONS
This appliance is supplied with a BS1363 approved 3 amp fused mains plug. When replacing the fuse always use a 3 amp BS1362 approved type. Never use this plug with the fuse cover omitted. To obtain a replacement fuse cover contact your supplying dealer or "LG Electronics U.K. Ltd."
If the mains sockets in your home differ, or are not suitable for the type of plug supplied, then the plug should be removed and a suitable type fitted. Please refer to the wiring instructions below:

Warning :
The mains plug severed from the mains lead of this appliance must be destroyed. A mains plug with bared wires is hazardous if engaged in a mains output line socket.

IMPORTANT
The wires in this mains lead are coloured in accordance with the following codes:

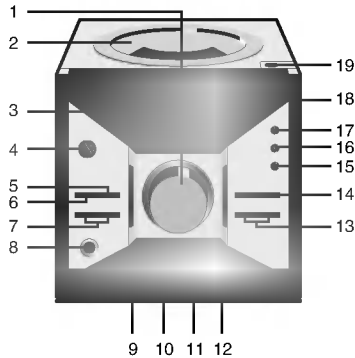
Blue	:	Neutral
Brown	:	Live

As the colour of the wires in the mains lead of this appliance may not correspond with the coloured markings identifying the terminals in your plug, proceed as follows:
The wire which is coloured blue must be connected to the terminal which is marked with the letter N or coloured black.
The wire which is coloured brown must be connected to the terminal which is marked with the letter L or coloured red.
If a 13 amp BS1363 plug or any other type of plug is used, 3 amp BS1362 approved fuse must be fitted either in the plug or at the distribution board.

Warning :
Do not connect either wire to the earth pin, marked with the letter E or with the earth symbol \perp or coloured green or green and yellow.

LOCATION OF CONTROLS

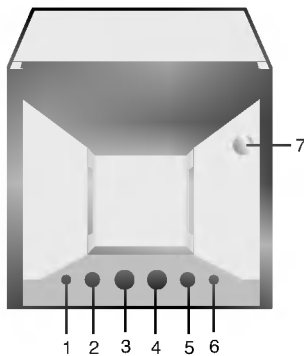
■ Compact Disc Stereo Receiver



Compact Disc Stereo Receiver

1. VOLUME Knob
2. CD Door
3. Display
4. ⏻ POWER Button
5. RDS Button
6. ST./MONO Button
7. ▼ TUNING ▲ Button
8. PHONES Socket
9. CD ◀◀◀ (REVERSE SKIP/SEARCH) Button
10. CD STOP(■) Button
11. CD PLAY/PAUSE(▶) Button
12. CD ▶▶▶ (FORWARD SKIP/SEARCH) Button
13. ▼ PRESET ▲ Button
14. FUNCTION Button
15. SET/PROGRAM Button
16. CLOCK Button
17. TIMER Button
18. Remote Sensor
19. CD Door OPEN(▲) Button

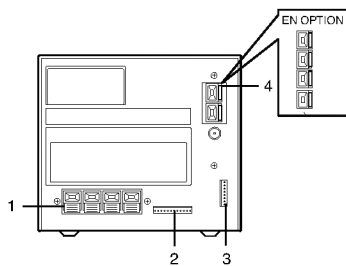
■ Cassette Deck



Cassette Deck

1. CD SYNC. Button
2. Rewind(◀◀) Button
3. STOP(■) Button
4. PLAY(▶) Button
5. Fast Forward (▶▶) Button
6. REC/PAUSE Button
7. DOOR OPEN(▲) Button

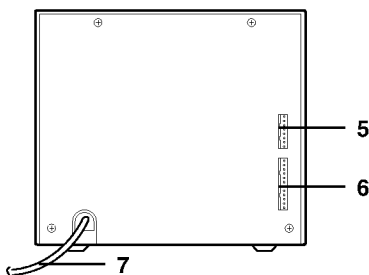
■ Compact Disc Stereo Receiver



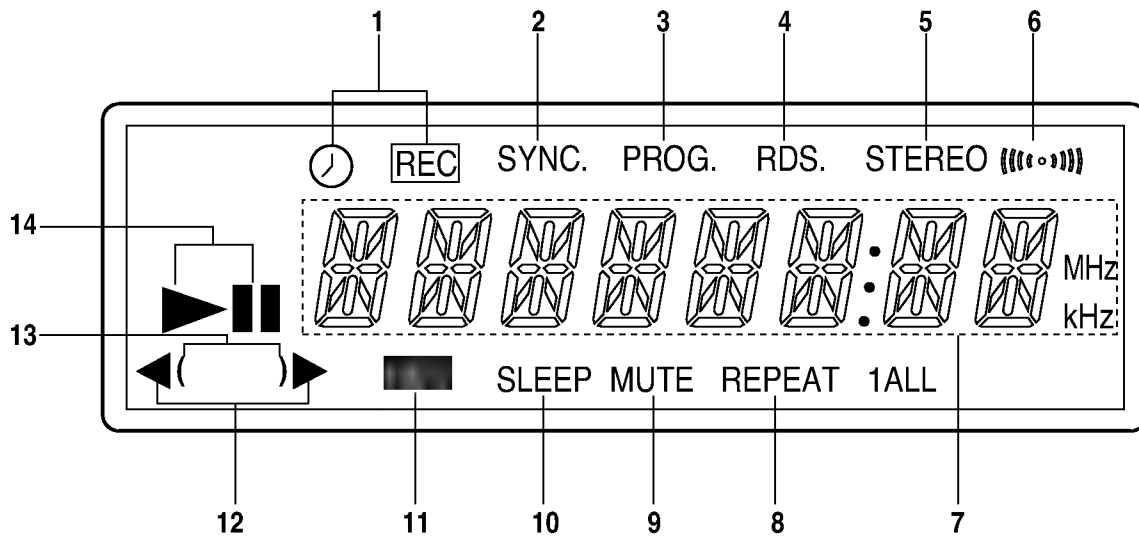
BACK VIEW

1. Speaker Connection Terminals
2. System ● Connection Terminal(12 Pin)
3. System ● Connection Terminal(8 Pin)
4. Antenna(Aerial) Connection Terminals
5. System ● Connection Terminal(8 Pin)
6. System ● Connection Terminal(12 Pin)
7. Power Cord

■ Cassette Deck



DISPLAY



- | | |
|--|-----------------------------------|
| 1. TIMER Indicator | 8. REPEAT Indicator |
| 2. CD SYNCHRO RECORDING Indicator | 9. MUTE Indicator |
| 3. MEMORY/PROGRAM Indicator | 10. SLEEP Indicator |
| 4. RDS(Radio Data System) Indicator | 11. RECORD/RECORD PAUSE Indicator |
| 5. FM STEREO Indicator | 12. TAPE DIRECTION Indicator |
| 6. FM STEREO RECEIVING Indicator | 13. TAPE ENTERED indicator |
| 7. CD TRACK NO., PRESET NO., FREQUENCY,
CD PLAYING TIME, CLOCK, TAPE COUNTER,
EQ PATTERN Display | 14. CD PLAY/PAUSE indicator |

AUTO FUNCTION SELECT SYSTEM

This stereo system has an auto function select system for various functions.

i. e. if a function is in operation (e. g. radio reception), and you wish to switch to another (e. g. cassette playback), all you have to do is select the desired function (cassette playback) directly, the unit automatically switches to the new function(cassette recorder).

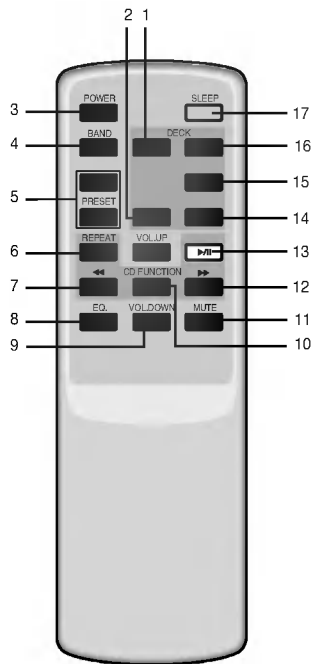
► On the unit:

- CASSETTE : PLAY(▶) Button
- CD : PLAY / PAUSE(▶) Button
- RADIO : ▼ PRESET ▲ Buttons

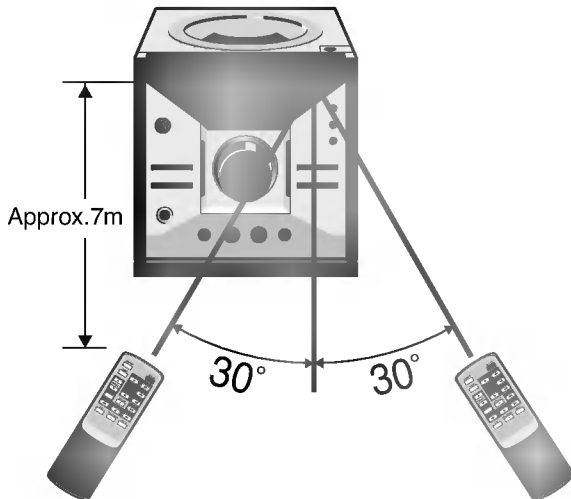
► On the remote control:

- CASSETTE : PLAY(▶) Button
- CD : PLAY / PAUSE(▶/||) Button
- RADIO : PRESET ▼/▲ Buttons

REMOTE CONTROLLER



- 1 TAPE PLAY(▶) Button
- 2 TAPE STOP(■) Button
- 3 POWER Button
- 4 BAND Button
- 5 ▼ PRESET ▲ Button
- 6 CD REPEAT Button
- 7 CD REVERSE SKIP/SEARCH Button(◀◀◀◀)
- 8 EQ. PATTERN Button
- 9 VOLUME UP(+)/DOWN(-) Button
- 10 CD STOP (■) Button
- 11 MUTE Button
- 12 CD Forward SKIP/SEARCH Button(▶▶▶▶)
- 13 CD PLAY/PAUSE(▶/||) Button
- 14 RECORD/RECORD PAUSE (●/||) Button
- 15 TAPE REWIND (◀◀) Button
- 16 TAPE FAST FORWARD (▶▶) Button

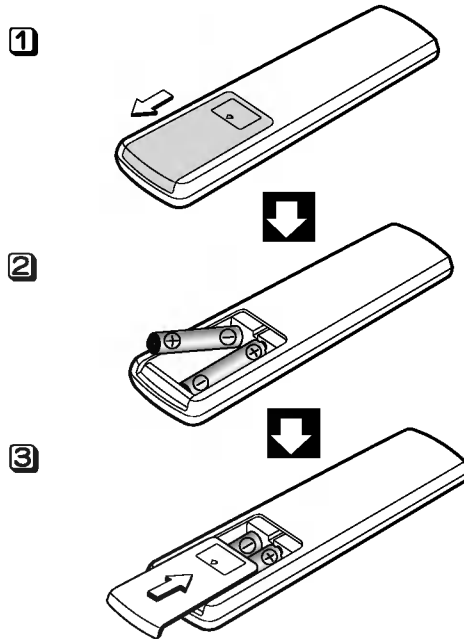


Range

The Remote Control device is designed for the range shown in the illustration above.

NOTE:

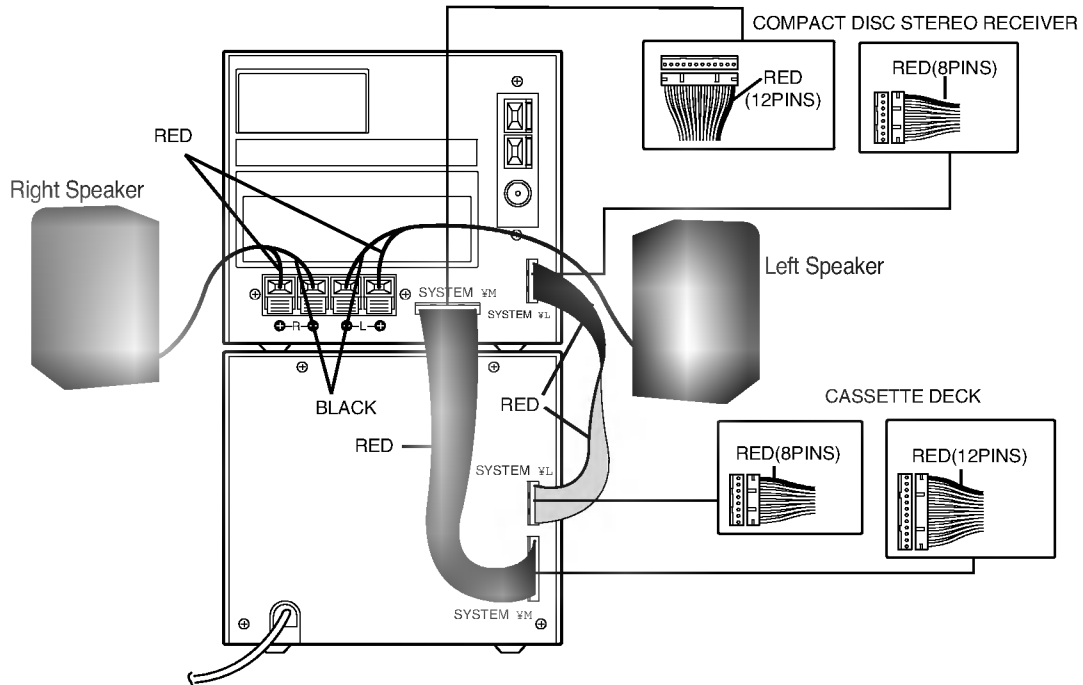
Strong light or obstacles between the remote device and the unit may interfere with the functioning of the Remote Control.



Notes on Batteries

- Your Remote Control comes with batteries. Use two "AA(IEC R6, SUM-3)" type high quality batteries.
- When the Remote Control fails to operate accurately at maximum distance from the unit, Replace the worn out batteries with new ones.
- Install two :AA(IEC R6, SUM-3) type batteries, observing correct battery polarity ● and ●
- Do not use different types of batteries together, or the old ones with new ones.
- When you are not going to use the unit for a long time, remove the batteries to prevent possible electrolyte leakage.

CONNECTIONS



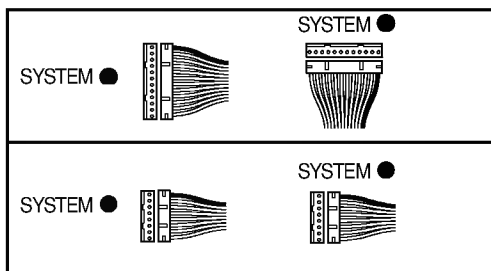
Preparation

- Unplug the system power cord.

To Connect the System Components

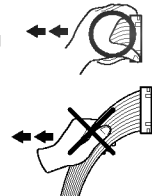
Connect the two system COMPACT DISC STEREO RECEIVER and CASSETTE DECK with each other by connecting from system ● to system ● and from system ● to ● system.

1. Connect the 12 pins system connection cable. (by SYSTEM ● and ● SYSTEM)
 - Make sure the grooves on the plugs fit into the grooves on the sockets.
2. Connect the 8 pins system connection cable. (by SYSTEM ● and ● SYSTEM)



To release the system connection cable

- Pull the end of the plug of the system connection cable.
- Do not pull the centre of the system connection cable.



NOTICE

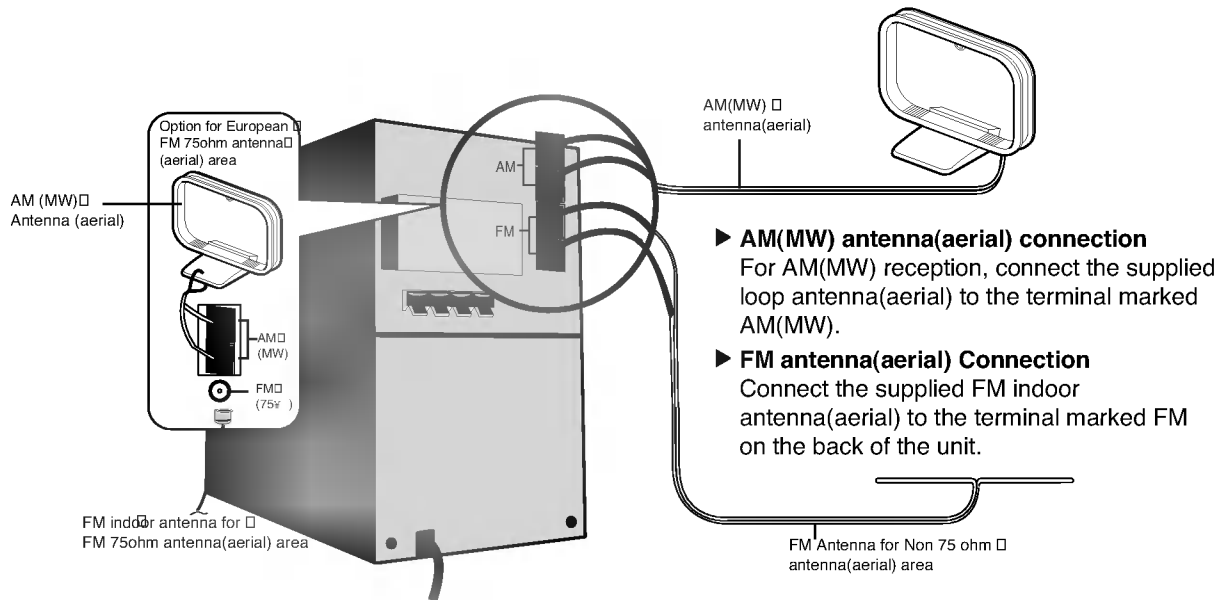
If you do not connect the system connection cables, only the compact disc stereo receiver is not operated. Make sure the connection of the system connection cables are tight.

Connection the Loud Speakers

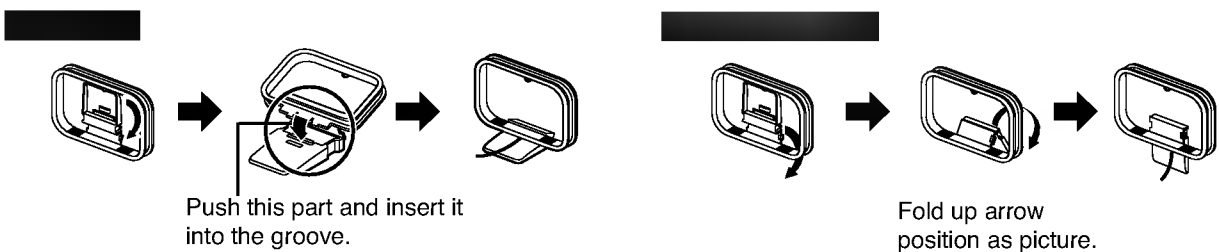
Insert the red wire of the left/right hand speaker into the red terminal marked ⊕ at the back of the unit. Insert the black wire into the black terminal marked ⊖.

CONNECTIONS

Antenna(aerial) Connection

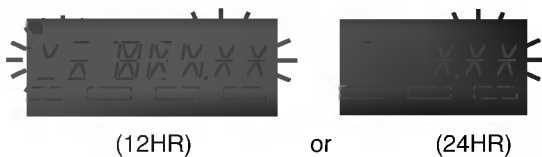


How to join the AM loop antenna



CLOCK SETTING

1. Press the CLOCK button. (If the clock is already set, press and hold the CLOCK button for more than 2 seconds). - The hours begin to blink.
2. Select a 24 hour cycle or 12 hour cycle by using the ▼ TUNING ▲ buttons.



3. Press the SET/PROGRAM button to confirm the selected hour cycle.
4. Use the ▼ TUNING ▲ buttons to set the correct hours.
5. Press the SET/PROGRAM button.
6. Use the ▼ TUNING ▲ buttons to set the correct minutes.
7. Press the SET/PROGRAM button and the correct time is shown on the display.
8. Press the CLOCK button at any time to display the time for about 3 seconds.

BEFORE OPERATING

Volume Adjustment

Press VOLUME + (UP) button to increase the sound level, or press VOLUME - (DOWN) button to decrease it.

Sound Quality Adjustment

► To activate stereo sound

You can choose between 4 fixed sound modes: select a desired sound mode by using the EQ. button on the remote control.

Press the EQ. button repeatedly so that your desired equalizer pattern is scrolled on the display.

FLAT: linear frequency response

ROCK: more bass, more treble

POP: less bass, less treble

CLASSIC: for orchestral music

► PHONES socket

Connect a stereo headphone(not supplied) plug(3.5mm) into the PHONES socket.

The speakers are automatically disconnected when you plug it into the PHONES socket.

MUTE button (On Remote Control)

Press this button to mute the sound.

You can mute your unit, for example, to answer the telephone.

The MUTE indicator appears on the display.

RADIO RECEPTION

Tuning Automatically and Manually

1. Press the FUNCTION (BAND) button so that FM or AM appears on the display.
2. Press the ▼ TUNING ▲ button to search a desired station.
 - Pressing briefly and repeatedly you can search a desired station manually.
 - Pressing for more than 1 second: The unit tunes in a station automatically.
3. **To receive the FM stereo:**
Press the ST./MONO button so that STEREO appears in the display. If stereo reception is distorted by noise, press this button to switch to mono reception so that 'STEREO' goes out in the display.

Storing Stations

1. **To clear any programme previously stored in any memory**
 - Press the SET/PROGRAM button for more than 2 seconds in Tuner mode. The "CLEAR" blinks for 5 seconds.
 - Press the SET/PROGRAM button again while CLEAR is blinked.
2. Tune a desired station.
3. Press the SET/PROGRAM button and it is stored in the preset number 1.
4. Repeat step 2~3 to memorize up to 30 stations. If full in memory up to 30 stations, 'FULL' appears in the display.

5 To memorize in adding channel.

- Tune a desired station.
- Press the SET/PROGRAM button.

6 To recall presets

Press and hold the ▼ PRESET ▲ button until the desired preset number appears or press it repeatedly.

■RDS(Radio Data System) Reception

What is RDS?

RDS(Radio Data System) is a system gradually being introduced on FM in many countries, where by an inaudible stream of data is transmitted in addition to the normal radio signal. This data contains various information including station/transmitter identification, traffic information and a list of alternative frequencies for the radio station being received.

Reception of RDS Stations

1. Press the FUNCTION(BAND) button to select FM.
2. Select a desired station by pressing the TUNING ▼/▲ button.
3. When the RDS transmission is received, the display shows the program service name (PS) after RDS indicator appears.

Notes:

- RDS is only available for FM reception.
- The PS(PROGRAM SERVICE) NAME is displayed automatically when a RDS station is received.

To recall the frequency

Press the RDS button.

CD PLAYING

To play a CD

1. Press the FUNCTION button repeatedly so that 'CD' or 'CD PLAYING TIME' appears on the display.

- If no disc is entered in the disc drawer, the CHECK DISC indicator is displayed.

2. Load a disc by using the CD DOOR OPEN (▲) button.

3. To start play back

- Press the PLAY/PAUSE(▶) button.

4 To pause the play

- Press the PLAY/PAUSE(▶) button.

5. To resume the play

- Press the PLAY/PAUSE(▶) button.

6. To stop playback.

- Press the STOP(■) button

7. To specify a track to play

- Press the ◀◀◀◀ or ▶▶▶▶ button repeatedly during stop or play until your desired track number appears-play will start from that track number.

8. To paly a desired location on CD.

- Keep the ◀◀◀◀ or ▶▶▶▶ button pressed and release it at the desired point.

9. To repeat play

- Press the REPEAT button on the remote control.
- Once, one track will repeat(REPEAT 1).
- Two times, all tracks will repeat(REPEAT ALL).
- Three times, repeat mode is cancelled.

10. Programme play (this cannot be set during palyback).

- A maximum of 20 tracks can be programmed.

● Press the SET/PROGRAM button.

● Specify a track to play with the ◀◀◀◀ or ▶▶▶▶ button.

● Press the SET/PROGRAM button to store this track.

● Repeat step ● to● .

● Press the PLAY/PAUSE(▶) button to start play.

To check a programme sequence.

● During programmed play press the STOP(■) button, and then press the SET/PROGRAM button repeatedly.

● **To change an existing programme.**

a) During stop the programmed play press the SET/PROGRAM button until the desired program position appears in the display.

b) Select a new track using the ◀◀◀◀ or ▶▶▶▶ button.

c) Press the SET/PROGRAM button to put the new track in position.

● **To add a programme**

If less than 20 programme positions are in memory, additional tracks may be added by following this procedure.

a) During stop the programmed play press the SET/PROGRAM button until "00" appears in the track number position on the display.(While the track number "00" is blinked if you press the SET/PROGRAM button again, it is changed to the CD normal play mode).

b) Select the track to be added by using the ◀◀◀◀ or ▶▶▶▶.

c) Press the SET/PROGRAM button twice.

d) Repeat steps b) to c).

● **To erase a programme sequence**

• In the stop mode press the SET/PROGRAM button, and then press the STOP(■) button.

• It is also erased if the CD drawer is opened.

● If you press the STOP(■) button during programmed play, the PROG. indicator goes out in the display and the programmed playback is cancelled. At that time, if you wish to resume the programmed playback press the SET/PROGRAM button and press the PLAY/PAUSE(▶) button.

TAPE PLAYBACK & RECORDING

PlayBack

1. Press the FUNCTION button to enter the tape mode. If no tape is in the cassette deck, 'NO TAPE' appears on the display.
2. Press the OPEN(▲) position to open the cassette door.
3. Insert the cassette with the exposed tape side down.
4. How to use each button.

Button	Function
▶	PLAY
▶▶	FAST FORWARD
◀◀	REWIND
■	STOP

Recording From Each Source

1. Insert the blank cassette.
2. Select and play a desired source; Radio, CD.
3. Press the REC/PAUSE(●/||) button to pause recording.
The ■ blinks.
4. Press the REC/PAUSE.(●/||) button again or press the PLAY(▶) button.
The ■ stops to blink.
5. To pause recording, press REC/PAUSE(●/||) button.
6. To stop recording, press STOP(■).

CD synchro recording

1. Load a disc.
2. Insert a blank cassette.
3. Press the FUNCTION button repeatedly to enter the CD mode.
Make the CD stop status if the CD is playing.
4. Press the CD SYNC. button to start recording.

Notes:

- The CD synchronized recording begins and stops automatically at the end.
 - If you want to record certain titles only, programme these before the CD synchronized recording.
 - If you want to record from the desired track, select the desired track with the◀◀◀◀or▶▶▶▶ button before commencing CD synchronized.
5. To stop recording, press STOP(■) button.

Tape counter Reset

Press the STOP(■) button while tape is stopped. The tape counter will be set to '0000'.

SLEEP TIMER SETTING(Remote Control Only)

1. **To Select the time to turn off:**
Press the SLEEP button. In the display you can see SLEEP and 90 for about 5 seconds. This means that the system turns off automatically after 90 minutes.
Each time the button is pressed the time interval before it turns off is reduced by 10 minutes. i. e. 80...70...etc. Select the desired time to turn off.
2. **To check the time to turn off:**
While the sleep function is active press the SLEEP button briefly. The time remaining until it turns off is displayed for about 5 seconds.

NOTE:

If you press the SLEEP button while the sleep time is displayed, the SLEEP time is set again.

3. To turn off the sleep function:

If you wish to stop the function, press the SLEEP button repeatedly until 10 appears, and then press the SLEEP button once again while 10 is displayed.

TIMER SETTING

With the TIMER function you can have the radio reception and recording, CD play or tape play turned on and off at the time desired.

1. Check the current time
2. Press the TIMER button to enter timer setting mode. (If you want to correct the previous memorised TIMER, press and hold the TIMER button more than 2 seconds.) The previous memorised timer on time and the '🕒' appears in the display. Each function : TUNER → CD → TAPE flashes in the display in turn.
3. Press the SET/PROGRAM button during flashing the desired function. If you select the TUNER, the "PLAY" and "REC" flashes in turn.
PLAY:Radio play only
REC:Radio plays and records
4. Press the SET/PROGRAM button to confirm the desired operating mode.
5. When you have selected the TUNER:
Select the previous memorised preset number with the ▼ TUNING ▲ buttons and press the SET/PROGRAM button. The hour flashes.
6. Set the hour to switch on by pressing the ▼ TUNING ▲ buttons.
7. Press the SET/PROGRAM button to confirm the hour to switch on. The minute flashes.
8. Set the minute to switch on by pressing the ▼ TUNING ▲ buttons.
9. Press the SET/PROGRAM button to confirm the minute to switch on.
10. Set the hour to switch off by pressing the ▼ TUNING ▲ buttons.
11. Press the SET/PROGRAM button.
12. Set the minute to switch off by pressing the ▼ TUNING ▲ buttons.
13. Press the SET/PROGRAM button.
14. Adjust the volume by pressing the ▼ TUNING ▲ buttons.
15. Press the SET/PROGRAM button.
🕒 appears and the timer setting has been completed.
16. Switch the system off.
17. To cancel or check the timer.
Each time the TIMER button is pressed you can select the timer activating or cancel. You can also check the timer setting status.
 - To activate or check the timer, press the TIMER button so that "🕒" lights up in the display.
 - To cancel the timer, press the TIMER button so that "🕒" in the display goes out.

SPECIFICATIONS

■ COMPACT DISC STEREO RECEIVER

AMP SECTION

- ▶ Output Power : 10W+10W
(6Ω, 2ch, T.H.D 10%)

TUNER SECTION

FM

- ▶ Tuning Range(optional) : 87.5-108MHz
or 65~74MHz and
87.5~108MHz
- ▶ Intermediate Frequency: 10.7MHz
- ▶ Signal-to-Noise Ratio : 65/60dB
(Mono/Stereo) 98MHz

MW(AM)

- ▶ Tuning Range(optional) : 522-1,611kHz
530-1,720kHz or
530-1,610kHz
- ▶ Intermediate Frequency: 450kHz
- ▶ Signal-to-Noise Ratio: 40dB

CD SECTION

- ▶ Frequency Response : 40-20,000Hz
- ▶ Signal-to-Noise Ratio : 85dB

■ CASSETTE DECK

- ▶ FF, REW Time(C-60) : 120sec.
- ▶ Frequency Response : 125-10,000Hz
- ▶ Signal-to-Noise Ratio : 50dB
- ▶ Channel separation : 45dB

■ GENERAL

- ▶ Power Requirements : Refer to the back panel
of the unit.
- ▶ Dimensions(W ; H ; D)
Stereo Receiver : 150 ; 140 ; 240mm
Cassette Deck : 150 ; 140 ; 221mm
- ▶ Weight(Net)
Compact Disc Stereo Receiver: 1.4kg
Cassette Deck : 2.3kg

■ SPEAKER SYSTEM

- ▶ Impedance : 6Ω
- ▶ Frequency Range : 80Hz-18,000Hz
- ▶ Rated Input Power : 10W
- ▶ Max. Input Power : 20W
- ▶ Net Dimensions(W ; H ; D)
: 163 ; 278 ; 200mm
- ▶ Weight(net) : 1.95kg

※ NOTE: Designs and specifications are subject to change without notice for improvement.



LG Electronics Inc.