



# Vacuum Cleaner

## OWNER'S MANUAL

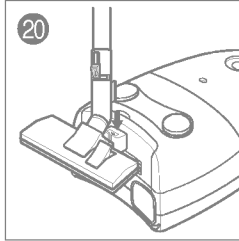
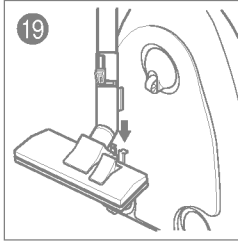
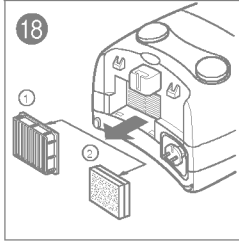
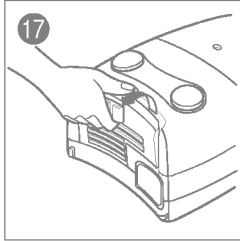
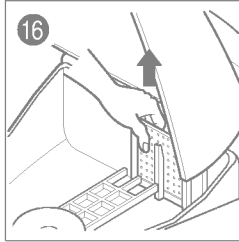
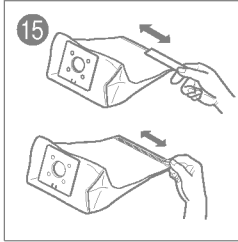
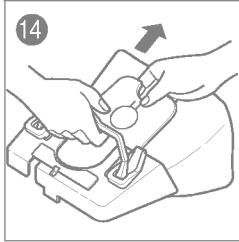
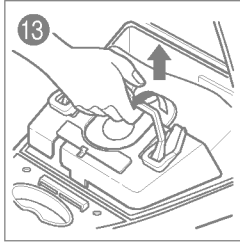
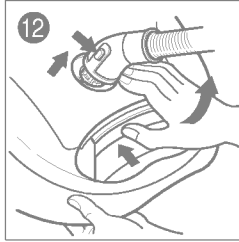
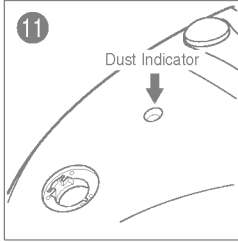
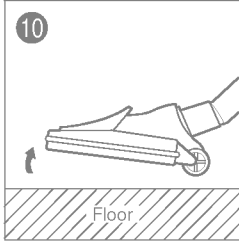
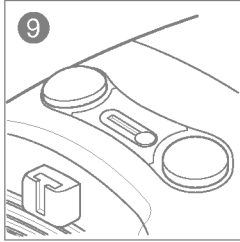
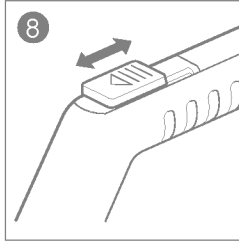
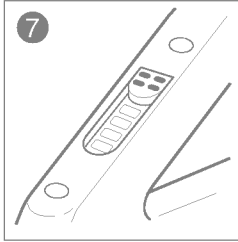
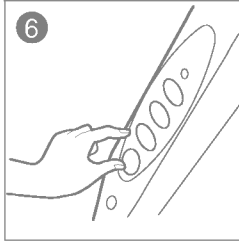
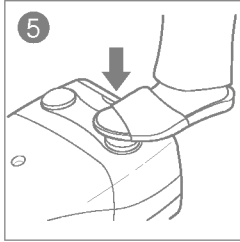
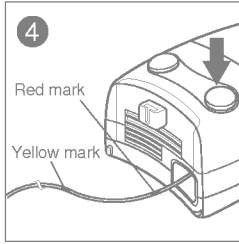
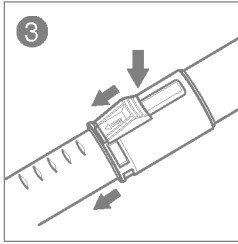
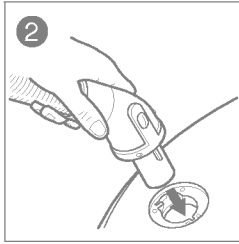
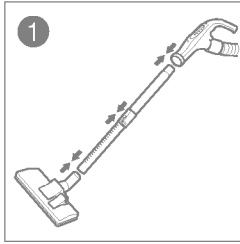
MODEL : V-5166CT (Hose-Button Control, Booster, Telescopic Pipe)  
V-5144HT/V-5155HTV (Hose-Slide Control, Telescopic Pipe)  
V-5143T/V-5153TV (Body Slide Control, Telescopic Pipe)

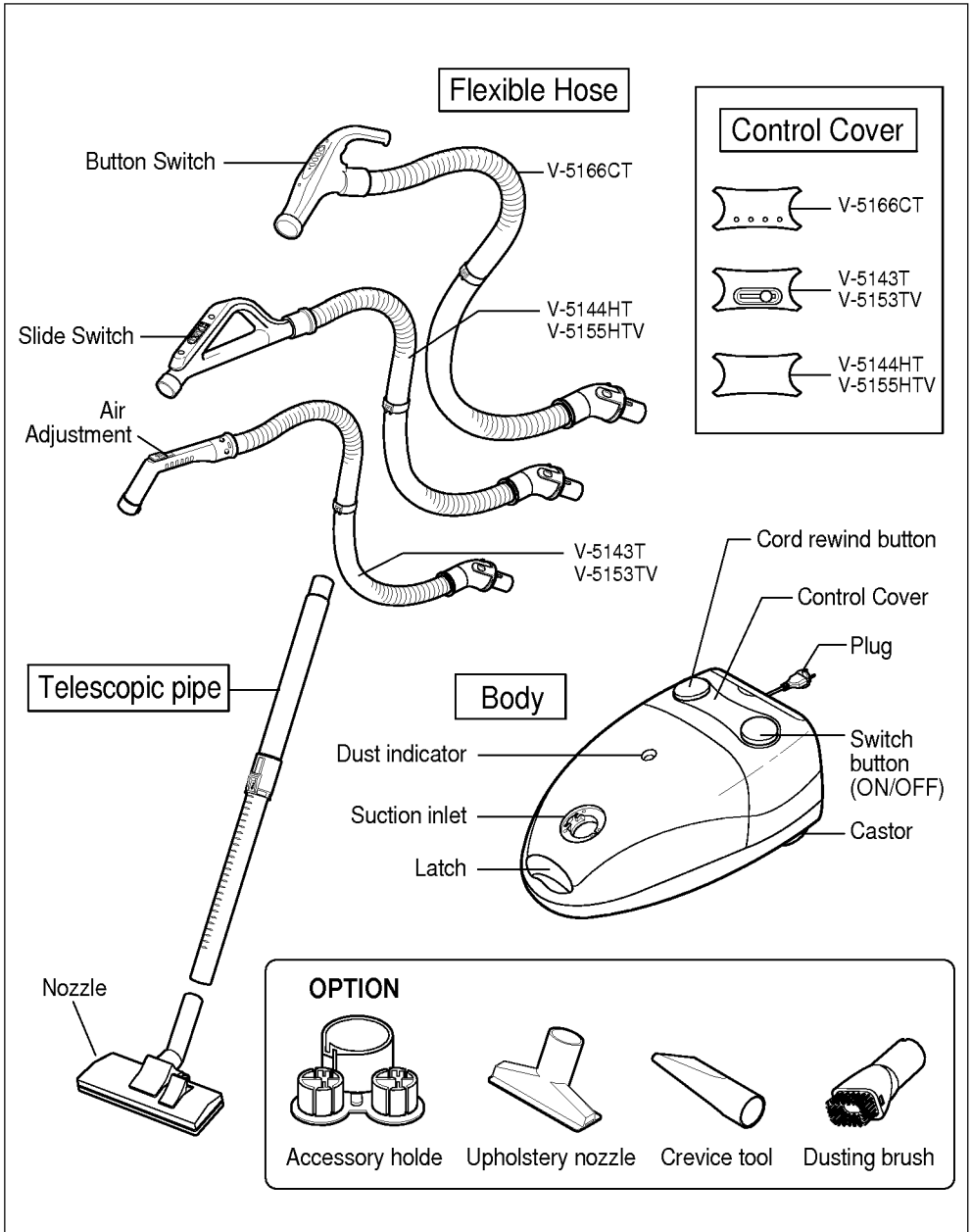
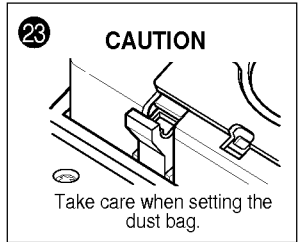
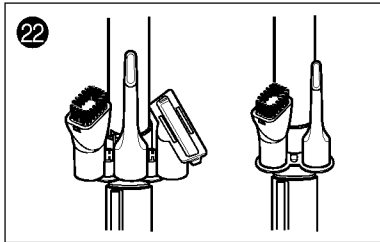
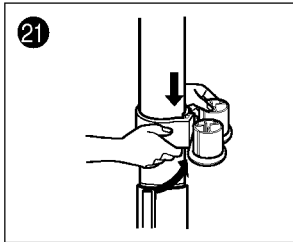
Please read carefully and thoroughly the operating instructions and safety precautions before installing and operating your vacuum cleaner..



P/No.: 3828F3698C(BWT)

Made in KOREA





## IMPORTANT SAFEGUARDS

When using an electrical appliance, basic safety precautions should always be followed, to reduce the risk of fire, electric shock and injury to persons, including the following:

### READ ALL INSTRUCTIONS BEFORE ASSEMBLING or USING THIS APPLIANCE

## WARNING

Disconnect power supply before servicing and/or cleaning the unit. If not, electric shock could occur and/or cleaner could suddenly start.

- 1 Do not leave appliance plugged in. Unplug it from the outlet when not in use or before servicing .
- 2 Do not use outdoors or on wet surfaces. Do not pick up the water or wet material.
- 3 Do not handle plug or appliance with wet hands.
- 4 Do not allow it to be used as a toy. Close attention is necessary when used by children
- 5 Use only manufacturer's recommended attachments.
- 6 If the supply cord is damaged, it must be replaced by the manufacturer or its service agent or a similarly qualified person in order to avoid a hazard.
- 7 Do not pull or carry by the power cord as a handle, close a door on cord, or pull the cord around sharp edges or corners. Do not run appliance over the cord. Keep the cord away from heated surfaces.
- 8 Do not unplug by pulling the cord. To unplug, grasp the plug, not the cord.
- 9 Do not put any object into openings. Do not use with any openings blocked; keep free of dust, lint, hair, and anything that may reduce air flow.
- 10 Keep hair, loose clothing, fingers, and all parts of body away from the openings. Do not use vacuum cleaner(v/cleaner) to pick up sharp hard objects, small toys, pins, etc.
- 11 Do not pick up anything that is burning or smoking, such as cigarettes, matches, or fireplace ashes.
- 12 Do not use to pick up flammable or combustible liquid or vapors such as gasoline or use in areas where they may exist.
- 13 Do not use vacuum cleaner without dust bag and/or filters in place.
- 14 Always turn off all controls before unplugging.

- 15 Do not keep v/cleaner on the chairs, tables, etc. Extra care must be taken when cleaning stairs.
- 16 The cord moves rapidly when rewinding. Provide a clear path and hold the plug when rewinding onto cord reel. Do not allow the plug to whip when rewinding.
- 17 Take electrical inspection when hose is cracked and its coat is peeled off.
- 18 Use this v/cleaner only for those jobs expected for a home vacuum cleaner.
- 19 Do not pull out the cord beyond the red mark. Pulling the cord out past the red mark may cause problems with the cord reel.
- 20 Do not use dry cleaning solvent in toxic or flammable. It may result in the surface damage. Wipe off the dirty place with a clean cloth.
- 21 Do not allow sharp or heavy objects to rest on the power cord. If the power cord is damaged or frayed, it may cause a fire or electric shock.
- 22 The use of radio transmitting devices close to the appliance may interfere the function of the appliance, input power may vary.


## USING THE VACUUM CLEANER

- 1 Connecting the nozzle, the extension pipes and the handle : insert the narrow section into the wide section. (fig.1)
- 2 HOSE Connection.
  - Insert the HOSE into body of the v/cleaner until a clicking sound is heard.
  - To remove the HOSE, depress the hose clamp button and pull out.
- 3 EXTENSION PIPES Adjustment.

TELESCOPIC EXTENSION PIPES (fig. 3)

Push the slider control downwards to extend or/ retract extension pipes

Insert the STEEL PIPES firmly each other. (fig.1)
- 4 Pull the main plug out of the vacuum cleaner and insert into the socket outlet. (fig.4)
  - Do not pull the cord beyond the red mark.
  - Pulling the cord out past the red mark may cause problems with the cord rewinding system.
  - When cleaning is completed, unplug cord from socket outlet and press the cord reel button. The cord will be automatically rewind.

5 Press the ON/OFF switch (  ). (fig.5)  
Power indicator will extinguish slowly when press switch button in off position.

#### 6 Adjusting the power (fig.6)

##### 1) V-5166CT

- Adjust power with the power control switch in the handle.
- Automatic : The normal cleaning mode, this mode is used when optimal cleaning is required by the appliance sensing the floor condition and amount of dust present.
- BOOSTER : This mode is suitable for removing dirt which is deep-embedded in a carpet or on the floor, and also recommended when the hose, the pipes, of the nozzle is clogged with any bulky obstacles, Power in this mode is much higher than MAX mode power. BOOSTER operates for 10seconds and is restored to the last mode automatically.

- MAX : This mode is used for cleaning carpets or similar items which require strong suction force.
- OFF : Used to stop appliance operation.

##### 2) V-5144HT, V-5155HTV (fig.7)

- Adjust power with the sliding switch in the handle.

##### 3) V-5143T, V-5153TV(fig.8,9)

- Adjust power with the sliding switch in the body. (fig.9)
- Open the hole in the handle, then suction power will be reduced.(fig 8)

#### 7 HOW TO USE NOZZLE

Pass the nozzle lightly over the floor. Do not exert excessive pressure, as this may damage the flooring, particularly parquet floors. Best results will be obtained by applying only light pressure. If the suction power weakened, raise the front end slightly. (fig.10)

#### 8 HOW TO USE THE ATTACHMENTS

- Accessory Holder can be attached on the Extension wands using claming hook (fig. 21)
- Accessories can be stored in the holder with two types, like (fig. 22)

The crevice tool can be stored at the tool box in the appliance

**CREVICE TOOL** : For the dust between the ribs of the radiator, between the shelves, or in the narrow gap.

**DUSTING BRUSH**: For gentle vacuuming of a delicate fabrics on the furniture, curtain etc.

**UPHOLSTERY NOZZLE**: For vacuuming of the dust on the upholstery.

#### 9 DUST INDICATOR (fig. 11)

- GREEN : Continue to use.
- RED : Empty the filter bag. Filter bag is full
- Watch the dust indicator after detaching the nozzle more than 10cm from the floor.

#### 10 Replacing the dust filter bag

Switch the vacuum cleaner off (fig. 5), remove the hose by pressing the knob and open the cover by pressing the latch. (fig. 12)

- 1) Paper filter bag  
Dispose of the bag and set the new one.
- 2) Cloth filter bag  
Empty the bag then reuse. (fig. 15)

**CAUTION**: Always use genuine LG dust bag. If you can't get it, use only 'HR6938-OSH' of paper bag made by PHILIPS.

#### 11 THE MOTOR SAFETY FILTER CLEANING

1. Pull out the MOTOR SAFETY FILTER (fig. 16)
2. Shake the dust off and wash filter in a warm soapy water. Do not clean in a dish-washer or in a washing machine.
3. Remove the moisture. Dry the filter sufficiently in shade for about a day.

#### 12 THE EXHAUST FILTER REPLACEMENT

1. Open the exhaust cover. (fig 17)
2. Replace the old EXHAUST FILTER with the new one or clean EXHAUST FILTER.
3. Insert the EXHAUST FILTER keeping arrow mark on it.

(fig 18- : High Efficiency pleated Micro Filter V-5166CT, V-5144HT, V-5155HTV, fig 18- :Micro Filter. V-5143T, V-5153TV)

#### 13 HOW TO STORE THE VACUUM CLEANER

- Store vacuum cleaner in a cool, clean, and dry place.
- Upright Position : Push the nozzle holder into the holder slot on the bottom of the v/cleaner. (fig.19)
- Horizontal Position: Push the nozzle holder into the holder slot on the rear of the v/cleaner.(fig.20)

## BEFORE REQUESTING SERVICE

Proper assembly and safe use of your vacuum cleaner are your personal responsibilities. Read this "Owner's Manual" carefully for important use and safety information.

Repairs, when necessary, must be performed at an authorized service facilities. This appliance is intended for HOUSEHOLD USE ONLY and not for commercial or industrial use.

## SAVE THESE INSTRUCTIONS

The serial number is found on the bottom of this unit. This number is unique to this unit and not available to others.  
 You should record requested information here and retain this guide as a permanent record of your purchase.

Date of purchase \_\_\_\_\_  
 Dealer purchased from \_\_\_\_\_  
 Dealer address \_\_\_\_\_  
 Dealer phone No. \_\_\_\_\_  
 Model No. \_\_\_\_\_  
 Serial No. \_\_\_\_\_

## TROUBLE SHOOTING CHART

Review this chart to find do-it-yourself solutions for minor performance problems.

**WARNING :** Disconnect power supply before servicing and/or cleaning the unit as electrical shock could occur and/or the cleaner could suddenly start.

Problem	Possible Cause	Possible solution
Cleaner won't run	1. Unplugged at wall outlet. 2. Power control S/W is in "OFF" position.	1. Plug in firmly 2. Push switch button. 3. Regulate power control switch.
Poor suction	1. Full or clogged filter bag. 2. Clogged clean filter. 3. Worn universal nozzle brush. 4. Hole in hose. 5. Clogged universal nozzle. 6. Filter cover open.	1. Change the filter bag. 2. Change the clean filter. 3. Change brush. 4. Replace hose. 5. Clean the air passage of nozzle. 6. Close filter cover.
Cleaner picks movable rug or universal nozzle pushes too hard	1. Suction too strong.	1. Regulate power control lever.

\* The working life of this set is 7 years since the date of delivery to the consumer.  
 Upon the expiry of the said period, it might be unsuitable for the use according to their destination.