

Table of Contents

Introduction

Introduction A1

Important Precautions A2

Installation

Connecting the Monitor A4

Making use of USB(Universal Serial Bus) A6

Operation

Location and Function of Controls A8

Control Panel Function A9

On Screen Display (OSD) Control Adjustment A10

On Screen Display(OSD) Selection and Adjustment A11

Technical Information

Energy Saving Design A13

Low Radiation Compliance (MPR II), Self Diagnostics Messages
and DDC (Display Data Channel) A14

Video Memory Modes A15

Troubleshooting A16

Service A17

Specifications A18

Appendix

Communications Regulation Information See back of manual

Environmental Labelling of Personal Computers See back of manual

ENGLISH

Introduction

The FLATRON LCD 577LM Flat Panel Monitor has an active matrix TFT (Thin-Film Transistor) LCD (Liquid Crystal Display).

This monitor is designed for use in small working areas or for those who need more working space on the desk.

Features

- The FLATRON LCD 577LM is a 15.1-inch (15.1 inches view able) intelligent micro-pro-cessor based monitor.
- USB(Universal Serial Bus) ports at the back of the monitor are prepared for the USB cable and hub. You can easily and flexibly connect USB - designed devices-such as a mouse, keyboard or printer- to the monitor for true Plug and Play function.
- Digitally controlled auto-scanning is done with the micro-processor for horizontal scan frequencies between 31 and 69kHz, and vertical scan frequencies between 56 - 85Hz. The microprocessor-based intelligence allows the monitor to operate in each frequency mode with the precision of a fixed frequency monitor.
- This monitor provides audio function.Thanks to built in audio function in the speaker,you can easily separate speakers from the monitor and place them where you want.
- You can adjust the height of the screen and also rotate it 90° clockwise (Portrait* function).
- We accomplished to adapt the advanced design and technology to the monitor. Soft touch buttons on the front panel are simple and allow you to conveniently adjust a variety of image controls. The absolute flat screen and screen surface treatment eliminate distracting glares.
- It supports resolutions up to 1024x768, and has a wide viewing angle of ± 60 degrees horizontal and ± 45 degrees vertical.
- For greater user health and safety, this monitor complies with the stringent Swedish TCO'99 requirements for low radiation emissions.
- For low cost of monitor operation, this monitor is certified as meeting the EPA Energy Star requirements, and utilizes the VESA Display Power Management Signalling (DPMS) protocol for power saving during non-use periods.

* For detailed information, please refer to the CD provided with the manual.

Monitor Registration

The model and serial numbers are found on the rear of this unit. These numbers are unique to this unit and not available to others. You should record requested information here and retain this guide as a permanent record of your purchase. Staple your receipt here.

Date of Purchase : _____
Dealer Purchased From : _____
Dealer Address : _____
Dealer Phone No. : _____
Model No. : _____
Serial No. : _____

Important Precautions

This unit has been engineered and manufactured to assure your personal safety, but improper use can result in potential electrical shock or fire hazard. In order not to defeat the safeguards incorporated in this monitor, observe the following basic rules for its installation, use, and servicing. Also follow all warnings and instructions marked directly on your monitor.

On Safety

Use only the power cord supplied with the unit. In case you use another power cord, make sure that it is certified by the applicable national standards if not being provided by the supplier. If the power cable is faulty in any way, please contact the manufacturer or the nearest authorized repair service provider for a replacement.

Operate the monitor only from a power source indicated in the specifications of this manual or listed on the monitor. If you are not sure what type of power supply you have in your home, consult with your dealer.

Overloaded AC outlets and extension cords are dangerous. So are frayed power cords and broken plugs. They may result in a shock or fire hazard. Call your service technician for replacement.

Do not Open the Monitor.

- There are no user serviceable components inside.
- There are Dangerous High Voltages inside, even when the power is OFF.
- Contact your dealer if the monitor is not operating properly.

To Avoid Personal Injury :

- Do not place the monitor on a sloping shelf unless properly secured.
- Use only a stand recommended by the manufacturer.
- Do not try to roll a stand with small casters across thresholds or deep pile carpets.

To Prevent Fire or Hazards:

- Always turn the monitor OFF if you leave the room for more than a short period of time. Never leave the monitor ON when leaving the house.
- Keep children from dropping or pushing objects into the monitor's cabinet openings. Some internal parts carry hazardous voltages.
- Do not add accessories that have not been designed for this monitor.
- During a lightning storm or when the monitor is to be left unattended for an extended period of time, unplug it from the wall outlet.

On Installation

Important Precautions

- Do not bring magnetic devices such as magnets or motors near the picture tube.

Do not allow anything to rest upon or roll over the power cord, and do not place the monitor where the power cord is subject to damage.

Do not use this monitor near water such as near a bathtub, washbowl, kitchen sink, laundry tub, in a wet basement, or near a swimming pool.

Monitors are provided with ventilation openings in the cabinet to allow the release of heat generated during operation. If these openings are blocked, built-up heat can cause failures which may result in a fire hazard.

Therefore, NEVER:

- Block the bottom ventilation slots by placing the monitor on a bed, sofa, rug, etc.
- Place the monitor in a built-in enclosure unless proper ventilation is provided.
- Cover the openings with cloth or other material.
- Place the monitor near or over a radiator or heat source.

Do not rub or strike the Active Matrix LCD with anything hard as this may scratch, mar, or damage the Active Matrix LCD permanently.

Do not press the LCD screen with your finger for a long time as this may incur some afterimages.

Some dot defects may appear on the screen, like Red, Green or Blue spots on the screen. However, this will have no impact or effect on the monitor performance.

If possible, use the VESA 1024x768 @60Hz video mode to obtain the best image quality for your LCD monitor. If used under any modes except the VESA 1024x768 @60Hz video mode, some scaled or processed images may appear on the screen. However, this is the characteristics of the LCD panel which has a fixed resolution of 1024x768 at 60Hz.

On Cleaning

- Unplug the monitor before cleaning the face of the LCD screen.
- Dust the monitor by wiping the screen and the cabinet with a soft, clean cloth. If the screen requires additional cleaning, use a clean, damp cloth.
- Do not use liquid cleaners or aerosol cleaners.

On Repacking

- Do not throw away the carton and packing materials. They make an ideal container in which to transport the unit. When shipping the unit to another location, repack it in its original material.

Connecting the Monitor

Connection to any IBM VGA PC and APPLE Macintosh PC

To set up the monitor, ensure that the power is turned off to the monitor, computer system, and other attached devices, then follow these steps:

Power off both the monitor and computer.

To adjust height of your monitor, unlock the stand lock on top of the stand. Push the stand lock at arrows shown (figure A).

Connect one end of the monitor signal cable to the input connector on the rear panel of the monitor.

Connect the other end to the 15-pin connector on the rear panel of the computer and tighten the screws. Be sure the signal cable aligns with the 15-pin connector.

- Connect the other end of the monitor signal cable to the rear panel of Macintosh computer through a Macintosh adapter and then tighten screws.

Connect the plug from the AC adapter into the base of the monitor.

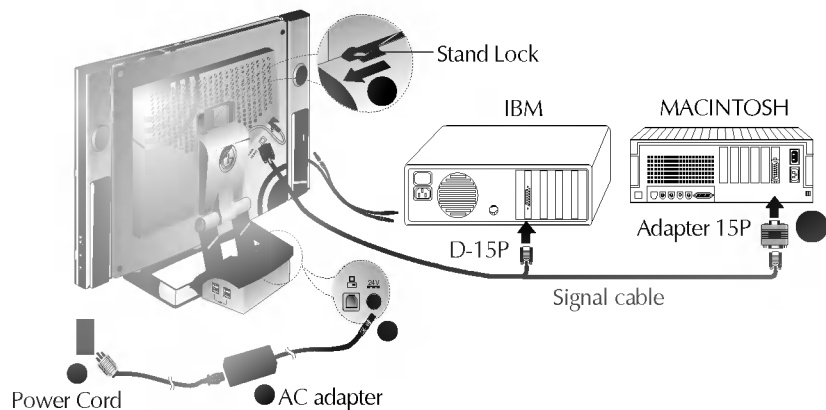
- Connect one end of the AC power cord to the AC adapter ● and the other end to a properly grounded AC outlet that is easily accessible and close to the monitor ●.

Power on the computer, then the monitor.

If you see the NO SIGNAL message, check the signal cable and connectors.

After using the system, power OFF the monitor, then the computer.

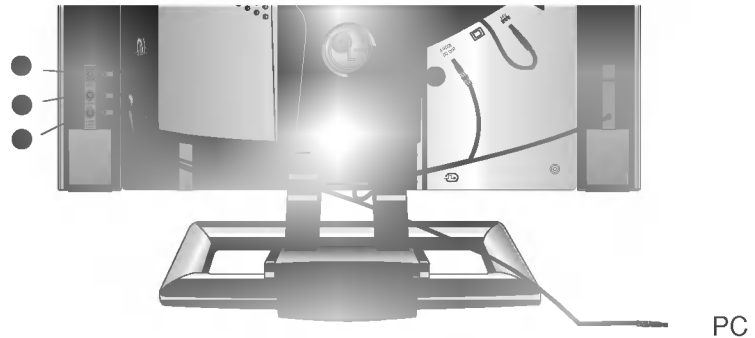
Note : If you see the " OUT OF RANGE " message, check to make sure your system is set to one of the factory preset modes (see page A15), or is set to a resolution and refresh rate within the specification limits of this monitor.



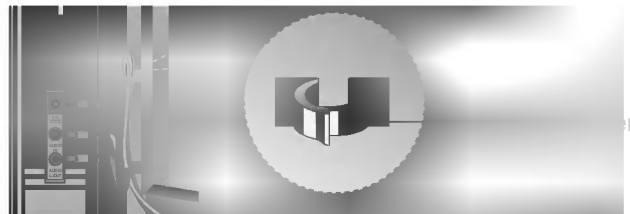
Connection the Audio

Connecting the Monitor

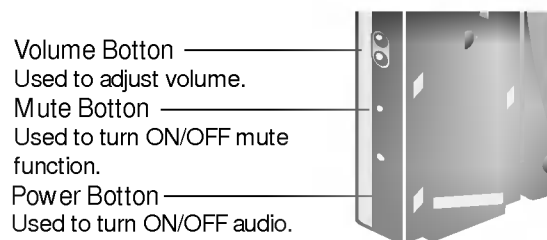
1. Connect the speaker as described in below picture.
2. Connect the one end of Audio DC power cable, which is attached on the speaker to AUDIO DC OUT connector ● and the other end to DC 24V connector ● on the back of the speaker. Then connect the audio cable port which is directly connected to the speaker to AUDIO L-OUT port ●.
3. Connect the audio cable from the Speaker's AUDIO IN port ● to the audio output port of your computer's sound card.



4. After connecting both cables, fix them with cable fixed holder (extra cable fixed holders are shipped with the speaker).



5. Turn on the speaker with power button and adjust volume to proper level.

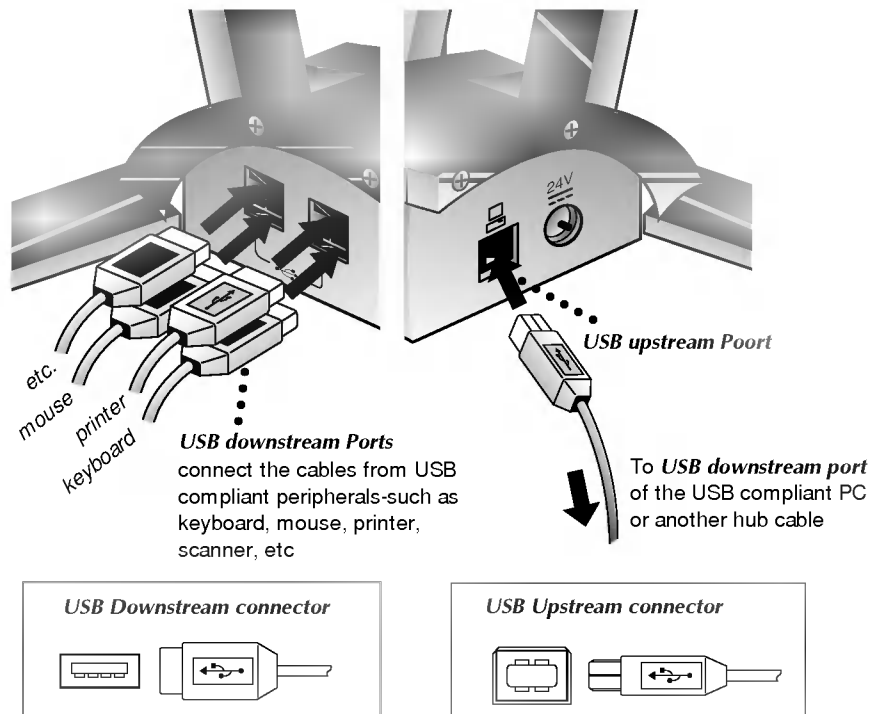


Making use of USB (Universal Serial Bus)

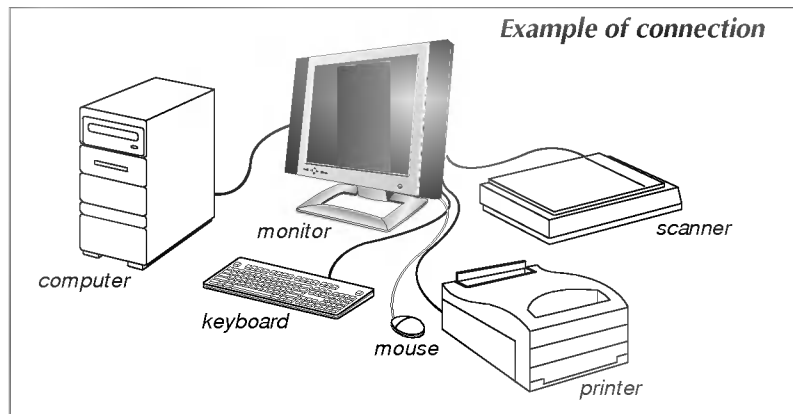
USB (Universal Serial Bus) is an innovation in connecting your different desktop peripherals conveniently to your computer. By using the USB, you will be able to connect your mouse, keyboard, printer, and other peripherals to your monitor instead of having to connect them to your computer. This will give you greater flexibility in setting up your system. USB allows you to connect chain up to 120 devices on a single USB port, and you can “hot” plug (attach them while the computer is running) or unplug them while maintaining Plug and Play auto detection and configuration. This monitor has an integrated self-powered USB hub, allowing up to 4 other USB devices to be attached to it.

USB connection

1. Connect the upstream port of the monitor to the downstream port of the USB compliant PC or another hub using the USB cable. (Computer must have a USB port)
2. Connect the USB compliant peripherals to the downstream ports of the monitor



Making use of USB (Universal Serial Bus)



NOTE

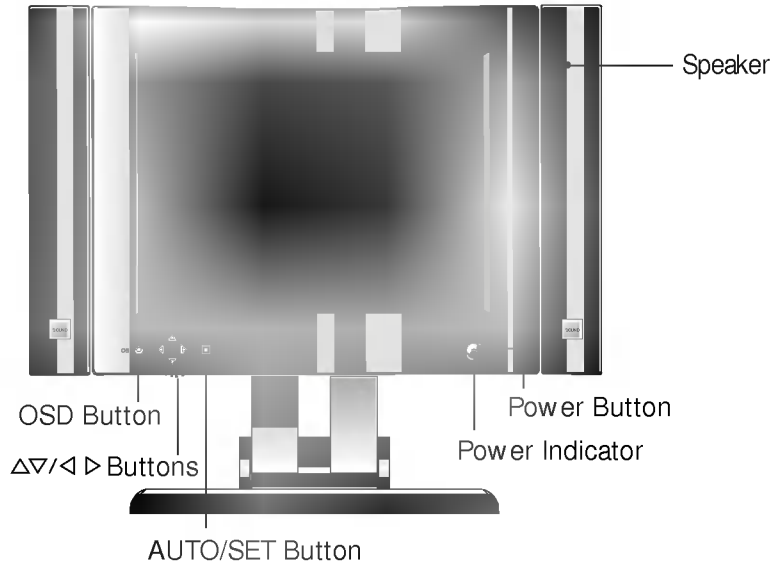
- To activate the USB hub function, the monitor must be connected to a USB compliant PC(OS) or another hub with the USB cable(enclosed).
- When connecting the USB cable, check that the shape of the connector at the cable side matches the shape at the connecting side.
- When the monitor is not plugged into an electric socket, the peripherals connected to the downstream ports will not operate.
- Even if the monitor is in a power saving mode, USB compliant devices will function when they are connected the USB ports(both the upstream and downstream) of the monitor.

USB specifications

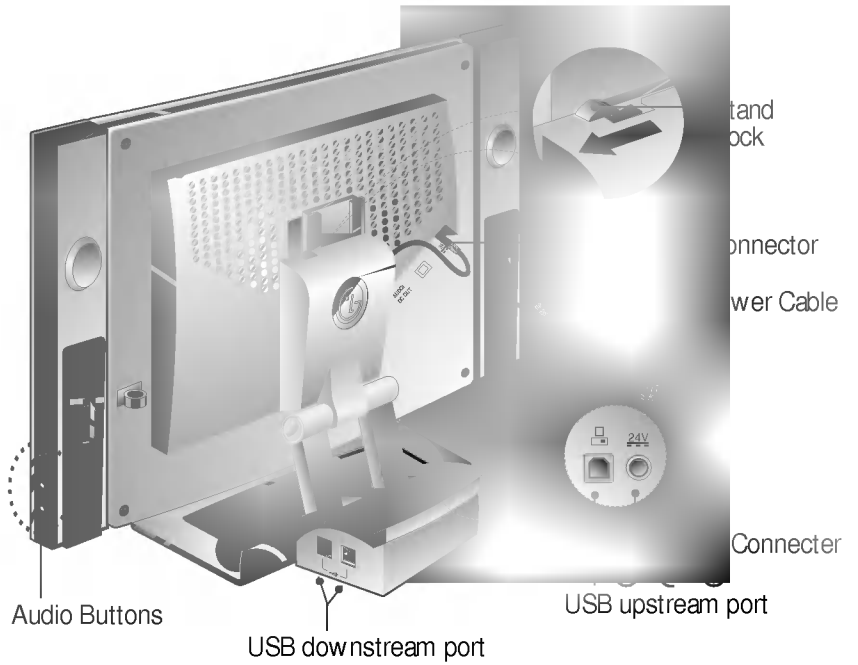
USB standard	Rev. 1.1 complied self-powered hub
Downstream power supply	500mA for each (MAX)
	12 Mbps (full), 1.5 Mbps (low)
	1 Upstream port
	4 Downstream ports

Location and Function of Controls

Front View



Rear View

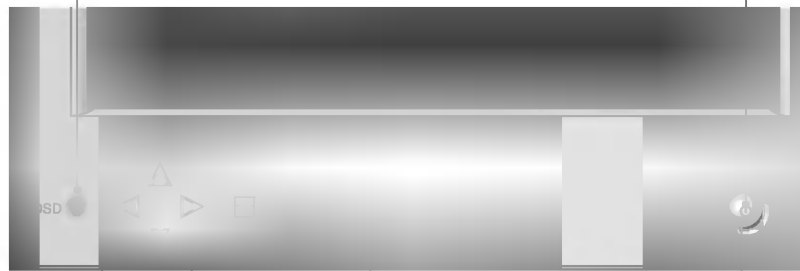


Control Panel Function

Front Panel Controls

Use this button to enter or exit the on screen display.

The power indicator light is shown in the power button. This indicator lights up green when the monitor operates normally. If the monitor is in DPM (Energy Saving) mode (stand-by/ suspend/power off), this indicator color changes to amber.



Use these buttons to choose or adjust items in the on screen display.

Use this button to enter a selection in the on screen display.

Use this button to turn the monitor on or off.

* AUTO Function

When you press AUTO/SET button before using OSD menu, the screen disappears momentarily. Then, it is adjusted automatically to optimized configuration.



If screen configuration needs to be adjusted, you can use H/V Position, Clock, Phase function from OSD menu for better screen quality (see A10 to A12).

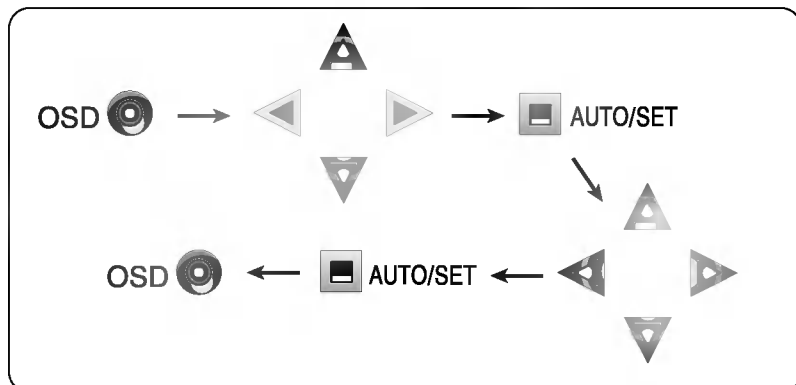
On Screen Display (OSD) Control Adjustment

Making adjustments to the image size, position and operating parameters of the monitor are quick and easy with the On Screen Display Control system. A quick example is given below to familiarize you with the use of the controls. Following section is an outline of the available adjustments and selections you can make using the OSD.

NOTE

- Allow the monitor to stabilize for at least 30 minutes before making image adjustment.

To make adjustments in the On Screen Display, follow these steps:



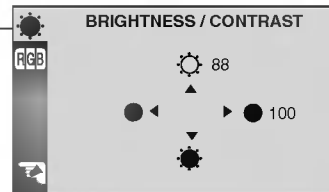
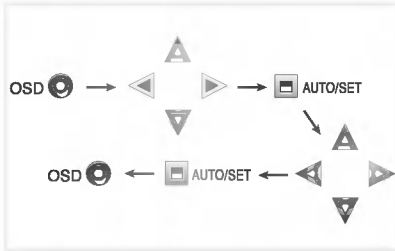
	Used to adjust the brightness of the screen.
	Contrast
	Adjust the display to the contrast desired.

- 1 Press the OSD Button, then the main menu of the OSD appears.
- 2 To access a control, use the Δ or ∇ Buttons. When the icon you want becomes highlighted, press the AUTO/SET Button.
- 3 Use the $\Delta/\nabla/\leftarrow/\rightarrow$ Buttons to adjust the item to the desired level.
- 4 Accept the changes by pressing the AUTO/SET Button.
- 5 Exit the OSD by Pressing the OSD Button.

On Screen Display(OSD) Selection and Adjustment

You were introduced to the procedure of selection and adjusting an item using the OSD system.

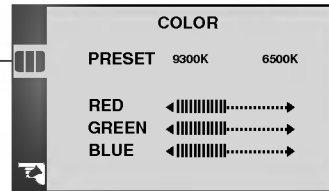
Listed below are the icons, icon names, and icon descriptions of the items that are shown on the Menu.



Brightness
Used to adjust the brightness of the screen.



Contrast
Adjust the display to the contrast desired.

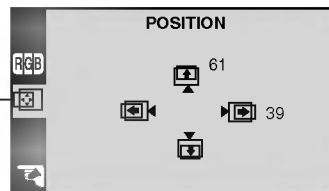


PRESET 9300K/ 6500K
To appear the displays color temperature.
• 9300K:Slightly bluish white.
• 6500K:Slightly reddish white.

RED To set your own color levels.

GREEN To set your own color levels.

BLUE To set your own color levels.

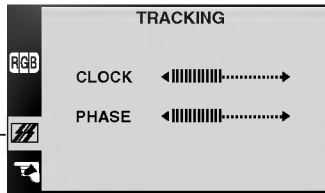
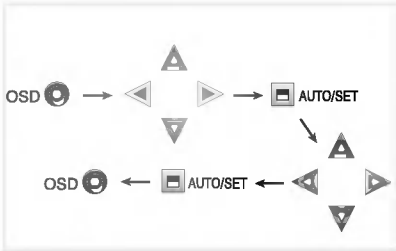


Vertical Position
To move image up and down.



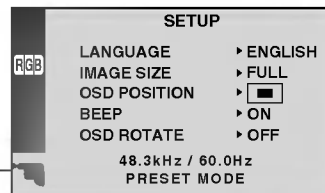
Horizontal Position
To move picture image left and right.

On Screen Display(OSD) Selection and Adjustment



CLOCK To minimize any vertical bars or stripes visible on the screen background. The horizontal screen size will also change.

PHASE To adjust the focus of the display. This item allows you to remove any horizontal noise and clear or sharpen the image of characters.



LANGUAGE To choose the language in which the control names are displayed.

IMAGE SIZE This function displays the image in its original size or enlarged size so as to fit in the full screen of the LCD panel.

OSD POSITION To adjust position of the OSD window on the screen.

BEEP To select beep ON or OFF.

OSD ROTATE Used to rotate OSD window 90°. If you select OFF, the OSD window rotates 90° clockwise, and if you select ON, it rotates 90° counter-clockwise.

Energy Saving Design

This monitor complies with the EPA's Energy Star program, which is a program designed to have manufacturers of computer equipment build circuitry into their products to reduce power consumption during time of non-use.

This monitor also goes into its energy saving mode if you exceed the monitor's operating limits, such as the maximum resolution of 1024 x 768 or the frequency refresh rates of 31-69kHz horizontal or 56-85Hz vertical. When this monitor is used with a Green or EPA Energy Star PC, or a PC with a screen blanking software following the VESA Display Power Management Signalling (DPMS) protocol, this monitor can conserve significant energy by reducing power consumption during periods of non-use. When the PC goes into the energy saving mode, the monitor will go into a suspended operation state, indicated by the Power LED light changing from a green color to an amber color. After an extended period in the suspended mode, the monitor will then enter a semi-OFF mode to conserve more energy. In the semi-OFF mode or DPMS OFF mode as we call it in our specifications, the Power LED will still show an amber color. When you awaken your PC by hitting a key or moving the mouse, the monitor will also awaken to its normal operating mode, indicated by the green Power LED light. By following these conventions, the power consumption can be reduced to the following levels:

Power Consumption

Mode	Hori. Sync	Verti. Sync	Video	Power Consumption	LED Color
Normal(Max.)	On	On	Normal	≤ 48W	Green
Stand-by	Off	On	Off	≤ 3W	Amber
Suspend	On	Off	Off	≤ 3W	Amber
Power Off	Off	Off	Off	≤ 3W	Amber

Low Radiation Compliance (MPR II), Self Diagnostics Messages and DDC (Display Data Channel)

Low Radiation Compliance (MPR II)

This monitor meets one of the strictest guidelines available today for low radiation emissions, offering the user extra shielding and an antistatic screen coating. These guidelines, set forth by a government agency in Sweden, limit the amount of emission allowed in the Extremely Low Frequency (ELF) and Very Low Frequency (VLF) electromagnetic range.

Self Diagnostics Messages

Special Self Diagnostics messages will appear on the screen when identifying the following monitor conditions:

■ NO SIGNAL



This OSD may pop up when it is ON but no signal is detected. In this case the message **NO SIGNAL** will be highlighted, alerting you to check the signal cable connections.

■ OUT OF RANGE



This OSD may appear to inform you that the signal being sent to the monitor is not within its frequency range. In this case, you would need to check the resolution and refresh rate you have your video card set to, and adjust to be within the range of the monitor.

DDC (Display Data Channel)

DDC is a communication channel over which the monitor automatically informs the host system (PC) about its capabilities. This monitor has DDC function; DDC2B. DDC2B carry out uni-directional communication between the PC and the monitor. Under these situations, the PC sends display data to the monitor but not commands to control the monitor settings.

NOTE

- PC must support DDC functions to do this.
- If your monitor is displaying a mono chrome image or the wrong resolution, select the DDC OFF function.

Video Memory Modes

The monitor has 26 memory locations for display modes, 16 of which are factory preset to popular video modes.

Display Modes (Resolution)

Display Modes (Resolution)			Horizontal Freq. (kHz)	Vertical Freq. (Hz)
1	VGA	640 x 350	31.47	70
2	VGA	720 x 400	31.47	70
3	VGA	640 x 480	31.47	60
4	MAC	640 x 480	35.00	67
5	VESA	640 x 480	37.50	75
6	VESA	640 x 480	43.27	85
7	VESA	800 x 600	35.16	56
8	VESA	800 x 600	37.88	60
9	MAC	800 x 600	48.08	72
10	VESA	800 x 600	46.88	75
11	VESA	800 x 600	53.67	85
12	MAC	832 x 624	49.73	75
13	VESA	1024 x 768	48.36	60
14	VESA	1024 x 768	56.48	70
15	VESA	1024 x 768	60.02	75
16	VESA	1024 x 768	68.67	85

Note : This LCD monitor has been pre-adjusted to the video mode of VESA 1024x768 @60Hz.

User Modes

- Modes 17-26 are empty and can accept new video data. If the monitor detects a new video mode that has not been present before or is not one of the preset modes, it stores the new mode automatically in one of the empty modes starting with mode 17.

If you use up the 10 blank modes and still have more new video modes, the monitor replaces the information in the user modes starting with mode 17.

Troubleshooting

Check the following before calling for service.

Display Position is incorrect.

- Push the AUTO/SET Button.
- If the results are unsatisfactory, adjust the image position using the H position and V position icon in the on screen display.

On the screen background, vertical bars or stripes are visible.

- Push the AUTO/SET Button.
- If the results are unsatisfactory, decrease the vertical bars or stripes using the CLOCK icon in the on screen display.

Any horizontal noise appearing in any image or characters are not clearly portraided.

- Push the AUTO/SET Button.
- If the results are unsatisfactory, decrease the horizontal bars using the PHASE icon in the on screen display.

NO SIGNAL message.

- The signal cable is not connected, or is loose. Check and secure the connection.

OUT OF RANGE message appears.

Picture is blank.

- The frequency of the signal from the video card is outside the operating range of the monitor.

*Horizontal Frequency: 31kHz-69kHz

*Vertical Frequency: 56Hz-85Hz

Use the graphics board's utility software to change the frequency setting (Refer to the manual for graphics board).

You can change the setup to the supported resolution using the Safe Mode (Press the F8 key during booting the system).

The power LED is illuminated amber.

- The monitor is in its display power management mode.
- There is no active signal coming from the PC.
- The signal cable is not fastened securely.
- Check the computer power and graphics adapter configuration.

The monitor doesn't enter the power saving off mode (Amber).

- Computer video signal is not VESA DPMS standard. Either the PC or the video controller card is not using the VESA DPMS power management function.

NOTE

- If the power indicator(LED) light is blinking amber, may result in abnormal condition of the monitor.
- Then press a power ON/OFF button on the front panel control and call your service technician for more information.

Service

Unplug the monitor from the wall outlet and refer servicing to qualified service personnel when :

- The power cord or plug is damaged or frayed.
- Liquid has been spilled into the monitor.
- The monitor has been exposed to rain or water.
- The monitor does not operate normally following the operating instructions. Adjust only those controls that are covered in the operating instructions. An improper adjustment of other controls may result in damage and often requires extensive work by a qualified technician to restore the monitor to normal operation.
- The monitor has been dropped or the cabinet has been damaged.
- The monitor exhibits a distinct change in performance.
- Snapping or popping from the monitor is continuous or frequent while the monitor is operating. It is normal for some monitors to make occasional sounds when being turned on or off, or when changing video modes.

Do not attempt to service the monitor yourself, as opening or removing covers may expose you to dangerous voltage or other hazards. Refer all servicing to qualified service personnel.

Specifications

Sync Signal Types

1	Separate Sync.	H. Sync.	V. Sync.
---	----------------	----------	----------

(N.C : No Connection)

Signal Connector Pin Assignment


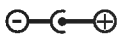
15pin VGA Connector



1	Red	9	N.C.
2	Green	10	Ground
3	Blue	11	Ground
4	Ground	12	SDA
5	Self-Test	13	H. Sync.
6	Red Ground	14	V. Sync.
7	Green Ground	15	SCL
8	Blue Ground		

AC Adapter

AC 100-240V, 50-60Hz, 1.2A - 0.6A

DC 24V  2.0A 

Use only the AC adapter supplied with the monitor.

Specifications

Display	Type	15.1inch (38.35cm) Flat Panel Active matrix-TFT LCD
		Anti-Glare coating
	Viewable Size	15.1inch (38.35cm)
	Pixel pitch	0.3 x 0.3mm
	True color	16.7 million color
Sync Input	Horizontal Freq.	31kHz - 69kHz (Automatic)
	Vertical Freq.	56Hz - 85Hz (Automatic)
	Input form	Separate, TTL, Positive/Negative
	Signal input	15 pin D-Sub connector
Video Input	Display Area	307 x 230mm / 12.1 x 9.1inch
	Input Form	Separate, RGB Analog, 0.714Vp-p/75ohm, Positive
	Resolution (max.)	VESA 1024 x 768 @85Hz
Audio	RMS Audio Output	2W(R+L)
	Input Sensitivity	0.7Vrms
	Speaker Impedance	8Ω
Dimensions	Width(Without Speaker)	39.4 cm / 15.5 inches
	Height	39.78 cm / 15.7 inches (min left) 47.28 cm / 18.6 inches (max left)
	Depth	21.47 cm / 8.45 inches
Power Input	DC 24V 1.8A	
Weight	Net	5.7 kg / 12.57 lbs (without speaker) 6.7 kg / 14.8 lbs
Tilt Range	Down	0°
	Up	30°
Environment Conditions	Operating condition	
	Temperature	10°C to 35°C
	Humidity	10% to 80% non-condensing
	Storage condition	
	Temperature	-20°C to 60°C
	Humidity	5% to 95% non-condensing

NOTE

- Information in this document is subject to change without notice.

Communications Regulation Information

FCC Compliance Statement

This equipment has been tested and found to comply within the limits of a Class B digital device pursuant to Part 15 of the FCC Rules. These limits are designed to provide reasonable protection against harmful interference in a residential installation.

This equipment generates, uses, and can radiate radio frequency energy and if not installed and used in accordance with the instructions, may cause harmful interference to radio communications. However, there is no guarantee that interference will not occur in a particular installation.

If this equipment does cause harmful interference to radio or television reception (which can be determined by turning the equipment on and off), the user is encouraged to try to correct the interference by using one or more of the following measures:

- Reorient or relocate the receiving antenna.
- Increase the separation between the equipment and the receiver.
- Connect the equipment into an outlet on a circuit different from that to which the receiver is connected.
- Consult the dealer or an experienced radio/TV technician for help.

Caution: Changes or modifications not expressly approved by the party responsible for compliance could void the user's (or your) authority to operate the equipment. Only peripherals (digital input/output devices, terminals, printers, etc.) certified to comply with the Class B limits may be attached to this monitor. Operation with non-certified peripherals is likely to result in interference to radio and TV reception.

Only shielded signal cables may be used with this System.

Notice

The regulations are applied only to the products with the ID LABEL indicating specific requirements.

Canadian DOC Notice

This Class B digital apparatus meets all requirements of the Canadian Interference-Causing Equipment Regulations.

Cet appareil numérique de la classe B respecte toutes les exigences du Règlement sur le matériel brouilleur du Canada.

Notice

The regulations are applied only to the products with the ID LABEL indicating specific requirements.

CE Conformity Notice



Products with the "CE" Marking comply with the EMC Directive (89/336/EEC) and LOW VOLTAGE Directive (73/23/EEC) issued by the Commission of the European Community.

Compliance with these directives implies conformity to the following European Norms :

- EN 55022 ; Radio Frequency Interference
- EN 50082-1:1992 ; Electromagnetic Immunity
- EN 60555-2 ; Power Line Harmonics
- EN 60555-3 ; Voltage Fluctuations
- EN 60950 ; Product Safety

Notice

The regulations are applied only to the products with the ID LABEL indicating specific requirements.

Environmental Labelling of Personal Computers



Congratulations!

You have just purchased a TCO'99 approved and labelled product! Your choice has provided you with a product developed for professional use. Your purchase has also contributed to reducing the burden on the environment and also to the further development of environmentally adapted electronics products.

This product meets the requirements for the TCO'99 scheme which provides for an international environmental and quality labelling of personal computers. The labelling scheme was developed as a joint effort by the TCO (The Swedish Confederation of Professional Employees), Svenska Naturskyddsforeningen (The Swedish Society for Nature Conservation), Statens Energimyndighet (The Swedish National Energy Administration) and SEMKO AB.

The requirements cover a wide range of issues: environment, ergonomics, usability, reduction of electric and magnetic fields, energy consumption and electrical safety.

Why do we have environmentally labelled computers?

In many countries, environmental labelling has become an established method for encouraging the adaptation of goods and services to the environment. The main problem, as far as computers and other electronics equipment are concerned, is that environmentally harmful substances are used both in the products and during their manufacture. Since it is not so far possible to satisfactorily recycle the majority of electronics equipment, most of these potentially damaging substances sooner or later enter nature.

There are also other characteristics of a computer, such as energy consumption levels, that are important from the viewpoints of both the work (internal) and natural (external) environments. Since all methods of electricity generation have a negative effect on the environment (e.g. acidic and climate-influencing emissions, radioactive waste), it is vital to save energy. Electronics equipment in offices is often left running continuously and thereby consumes a lot of energy.

Environmental Labelling of Personal Computers

What does labelling involve?

The environmental demands impose restrictions on the presence and use of heavy metals, brominated and chlorinated flame retardants, CFCs (freons) and chlorinated solvents, among other things. The product must be prepared for recycling and the manufacturer is obliged to have an environmental policy which must be adhered to in each country where the company implements its operational policy.

The energy requirements include a demand that the computer and/or display, after a certain period of inactivity, shall reduce its power consumption to a lower level in one or more stages. The length of time to reactivate the computer shall be reasonable for the user.

Labelled products must meet strict environmental demands, for example, in respect of the reduction of electric and magnetic fields, physical and visual ergonomics and good usability.

Below you will find a brief summary of the environmental requirements met by this product. The complete environmental criteria document may be ordered from:

TCO Development

SE-114 94 Stockholm, Sweden

Fax: +46 8 782 92 07

Email (Internet): development@tco.se

Current information regarding TCO'99 approved and labelled products may also be obtained via the Internet, using the address: <http://www.tco-info.com/>

Environmental requirements

Flame retardants

Flame retardants are present in printed circuit boards, cables, wires, casings and housings. Their purpose is to prevent, or at least to delay the spread of fire. Up to 30% of the plastic in a computer casing can consist of flame retardant substances. Most flame retardants contain bromine or chloride, and those flame retardants are chemically related to another group of environmental toxins, PCBs. Both the flame retardants containing bromine or chloride and the PCBs are suspected of giving rise to severe health effects, including reproductive damage in fish-eating birds and mammals, due to the bio-accumulative* processes. Flame retardants have been found in human blood and researchers fear that disturbances in foetus development may occur.

Environmental Labelling of Personal Computers

The relevant TCO'99 demand requires that plastic components weighing more than 25 grams must not contain flame retardants with organically bound bromine or chlorine. Flame retardants are allowed in the printed circuit boards since no substitutes are available.

Cadmium**

Cadmium is present in rechargeable batteries and in the colour-generating layers of certain computer displays. Cadmium damages the nervous system and is toxic in high doses. The relevant TCO'99 requirement states that batteries, the colour-generating layers of display screens and the electrical or electronics components must not contain any cadmium.

Mercury**

Mercury is sometimes found in batteries, relays and switches. It damages the nervous system and is toxic in high doses. The relevant TCO'99 requirement states that batteries may not contain any mercury. It also demands that mercury is not present in any of the electrical or electronics components associated with the labelled unit. There is however one exception. Mercury is, for the time being, permitted in the back light system of flat panel monitors as there today is no commercially available alternative. TCO aims on removing this exception when a mercury free alternative is available.

CFCs (freons)

The relevant TCO'99 requirement states that neither CFCs nor HCFCs may be used during the manufacture and assembly of the product. CFCs (freons) are sometimes used for washing printed circuit boards. CFCs break down ozone and thereby damage the ozone layer in the stratosphere, causing increased reception on earth of ultraviolet light with e.g. increased risks of skin cancer (malignant melanoma) as a consequence.

Lead**

Lead can be found in picture tubes, display screens, solders and capacitors. Lead damages the nervous system and in higher doses, causes lead poisoning. The relevant TCO'99 requirement permits the inclusion of lead since no replacement has yet been developed.

* Bio-accumulative is defined as substances which accumulate within living organisms

** Lead, Cadmium and Mercury are heavy metals which are Bio-accumulative.