

User's Guide

L1530TM

Make sure to read the **Safety Precautions** before using the product.

Keep the User's Guide(CD) in an accessible place for future reference.



See the label attached on the back cover and quote this information to your dealer when you require service.



Table of Contents

	Safety Precautions	A1
	Accessories	A4
	Major Monitor Features	A5
	How to Use a Stand	A6
	Connecting to a PC	A8
	Using a Tablet Monitor	A10
	Installing USB Tablet Manager (tablet running driver)	A10
	Using a Pen	A12
	Tablet Application Software	A13
	Screen Selection and Adjustment	A15
	Adjustment on the OSD (On Screen Display) Screen	A17
	OSD(On Screen Display) Screen Adjustment	A19
	Adjusting Screen Picture/Color/Position	A20
	Track/Factory Reset/Setup	A21
	Lightview	A22
	Troubleshooting	A23
	Product Specifications	A26

Please read these safety precautions carefully before using the monitor.

-  **Warning** If you ignore the warning message, you may be seriously injured or there is a possibility of accident or death.
-  **Caution** If you ignore the caution message, you may be slightly injured or the product may be damaged

Precautions in installing the Monitor

Warning

- **Keep away from heat sources like electrical heaters.**
 - Electrical shock, fire, malfunction or deformation may occur.
- **Keep the packing anti-moisture material or vinyl packing out of the reach of children.**
 - Anti-moisture material is harmful if swallowed. If swallowed by mistake, force the patient to vomit and visit the nearest hospital. Additionally, vinyl packing can cause suffocation. Keep it out of the reach of children.
- **Do not put heavy objects on the monitor or sit upon it.**
 - If the monitor collapses or is dropped, you may be injured. Children must pay particular attention.
- **Do not leave the power or signal cable unattended on the pathway.**
 - The passerby can falter, which can cause electrical shock, fire, product breakdown or injury.
- **Install the monitor in a neat and dry place.**
 - Dust or moisture can cause electrical shock, fire or product damage.
- **If you can smell smoke or other odors or hear a strange sound unplug the power cord and contact the service center.**
 - If you continue to use without taking proper measures, electrical shock or fire can occur.
- **If you dropped the monitor or the case is broken, turn off the monitor and unplug the power cord.**
 - If you continue to use without taking proper measures, electrical shock or fire can occur. Contact the service center.
- **Do not drop metallic objects such as coins, hair pins, chopsticks or wire into the monitor, or inflammable objects such as paper and matches. Children must pay particular attention.**
 - Electrical shock, fire or injury can occur. If a foreign object is dropped into the monitor, unplug the power cord and contact the service center.

Caution

- **Make sure the monitor ventilation hole is not blocked. Install the monitor in a suitably wide place (more than 10cm from the wall)**
 - If you install the monitor too close to the wall, it may be deformed or fire can break out due to internal heat.
 - **Do not block the ventilation hole of the monitor by a tablecloth or curtain.**
 - The monitor can be deformed or fire can break out due to overheating inside the monitor.
 - **Install the monitor on a flat and stable place that has no risk of dropping the monitor.**
 - If the monitor is dropped, you may be injured or the monitor may be broken.
 - **Install the monitor where no EMI occurs.**
 - **Keep the monitor away from direct sunlight.**
 - The monitor can be damaged.
-



Electrical Power Related Precautions

Warning


- **Make sure to connect the power cable to the grounded current.**
 - You may be electrocuted or injured.
- **Use the rated voltage only.**
 - The monitor can be damaged, or you may be electrocuted.
- **During a thunder or lightning storm, unplug the power cable or signal cable.**
 - You may be electrocuted or a fire can break out.
- **Do not connect several extension cords, electrical appliances or electrical heaters to a single outlet. Use a power bar with a grounding terminal designed for exclusive use with the computer.**
 - A fire can break out due to overheating.
- **Do not touch the power plug with wet hands. Additionally, if the cord pin is wet or covered with dust, dry the power plug completely or wipe dust off.**
 - You may be electrocuted due to excess moisture.
- **If you don't intend to use the monitor for a long time, unplug the power cable from the monitor.**
 - Covering dust can cause a fire, or insulation deterioration can cause electric leakage, electric shock or fire.
- **Fix the power cable completely.**
 - If the power cable is not fixed completely, a fire can break out.
- **Hold the plug when pulling out the power cable. Do not bend the power cord with excessive force or put heavy objects on the power cord.**
 - The power line can be damaged, which may cause electric shock or fire.
- **Do not insert a conductor (like a metal chopstick) into one end of the power cable while the other end is connected to the input terminal on the wall. Additionally, do not touch the power cable right after plugging into the wall input terminal.**
 - You may be electrocuted.

Caution

- **Do not unplug the power cord while the monitor is in use.**
 - Electrical shock can damage the monitor.

Precautions in Moving the Monitor

Warning

- **Make sure to turn off the monitor.**
 - You may be electrocuted or the monitor can be damaged.
 - **Make sure to remove all cables before moving the monitor.**
 - You may be electrocuted or the monitor can be damaged.
- 


 **Caution**

- **Do not shock the monitor when moving it.**
 - You may be electrocuted or the monitor can be damaged
 - **Do not dispose the product-packing box. Use it when you move.**
 - **Make the panel face forward and hold it with both hands to move.**
 - If you drop the monitor, the damaged monitor can cause electric shock or fire. Contact with the service center for repair.
-

 **Precautions in Using the Monitor** **Warning**

- **Do not disassemble, repair or modify the monitor at your own discretion.**
 - Fire or electric shock accident can occur.
 - Contact the service center for check, calibration or repair.
- **Do not spray water on the monitor or scrub with an inflammable substance (thinner or benzene). Fire or electric shock accident can occur**
- **Keep the monitor away from water.**
 - Fire or electric shock accident can occur.

 **Caution**

- **Do not put or store inflammable substances near the monitor.**
 - There is a danger of explosion or fire due careless handling of the inflammable substances.
 - **When cleaning the brown tube surface, unplug the power cord and scrub with soft cloth to prevent scratching. Do not clean with a wet cloth.**
 - The water can sink into the monitor, which can cause electric shock or serious malfunction.
 - **Take a rest from time to time to protect your vision.**
 - **Keep the monitor clean at all times.**
 - **Take a comfortable and natural position when working with a monitor to relax the muscles.**
 - **Take a regular break when working with a monitor for a long time.**
 - **Do not press strongly upon the panel with a hand or sharp object such as nail, pencil or pen, or make a scratch on it.**
 - **Keep the proper distance from the monitor.**
 - Your vision may be impaired if you look at the monitor too closely.
 - **Set the appropriate resolution and clock by referring to the User's Manual.**
 - Your vision can be impaired.
 - **Use authorized detergent only when cleaning the monitor. (Do not use benzene, thinner or alcohol.)**
 - Monitor can be deformed.
 - **Use ONLY the pen provided at the front side of the monitor. Do not use any other pen.**
 - The panel can be scratched or the pen may be rendered non-operational.
 - **Please remove the battery if you don't intend to use the device for a long period of time.**
 - Battery life can be reduced.
 - **Ghost images or blurring may occur if the display image on the screen remains static over long periods.**
 - If you do not intend to use the monitor for a long time, use the power-saving mode or set moving pictures as a screen saver
-





Please check all accessories are included in the monitor.

* The actual monitor and accessories may look differently than shown in this manual.



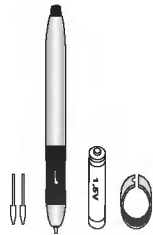
Monitor



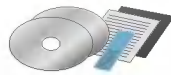
Back Door



Pen Holder



Pen/ Pen Content (2 ea.)
Battery (1 ea.)/ Pen Tweezers (1ea.)



User's Manual
CD/Cards/Software CD



15-pin D-Sub Signal
Cable



DVI-D Signal Cable



Power Cord/Adapter
* for use only with power supply
Li shin, LSE0107A1236



USB Cable






Tablet Function

- You can write a letter or draw a picture using the electronic pen.
Handwriting can also be saved as an image file, which allows intuitive use of the computer.
- Extending the handwriting recognition function, you can directly add a letter or a picture on the various document types including MS Word or PDF. Therefore, you can communicate with others while maintaining the current document format.

Stand Angle Adjustment Function

A stand can be conveniently separated or adjusted to various angles according to your needs. Refer to the next page for details of the stand adjustment method, which allows intuitive use of the computer.



Basic connection – using a stand

You can adjust a stand angle by taking the following steps. Set your preferences. **Make sure to hold the monitor panel with both hands when adjusting the stand angle.**



Lift up the monitor panel to face upwards.
* Maximum tilt angle: 18°



Pull out and hold down the monitor



If necessary, you can adjust the monitor panel only while folding the monitor.



Hold down the monitor until it reaches to a stand and the bottom.
* Maximum tilt angle: 113°


Cautions



Do not force the monitor panel up with excessive force.
It may do damage to the monitor.


You can separate a stand according to your own requirements.

■■■ To separate a stand



1. Put the monitor on a cushion or soft cloth with the front screen facing downwards.



2. Press the button () at the rear of the monitor until you hear a click.



3. Ease out the upper side of the stand while holding down the button, and push down on the stand to detach.

■■■ To attach a stand



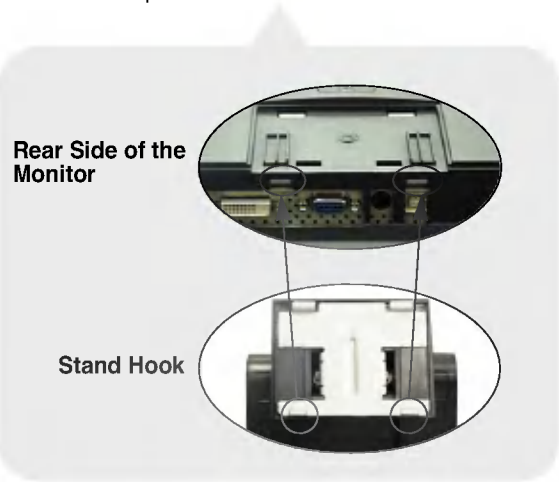
1. Put the monitor on a cushion or soft cloth with the front screen facing downwards.



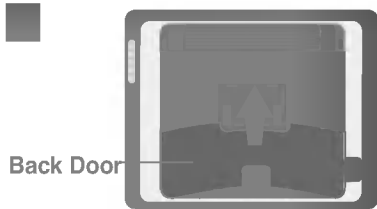
2. Hold the stand with both hands, and match up the bottom of the stand hook with the lower hole of the monitor before fixing it in place.



3. Push and insert the upper side of the stand. You will hear a click if it is inserted successfully.



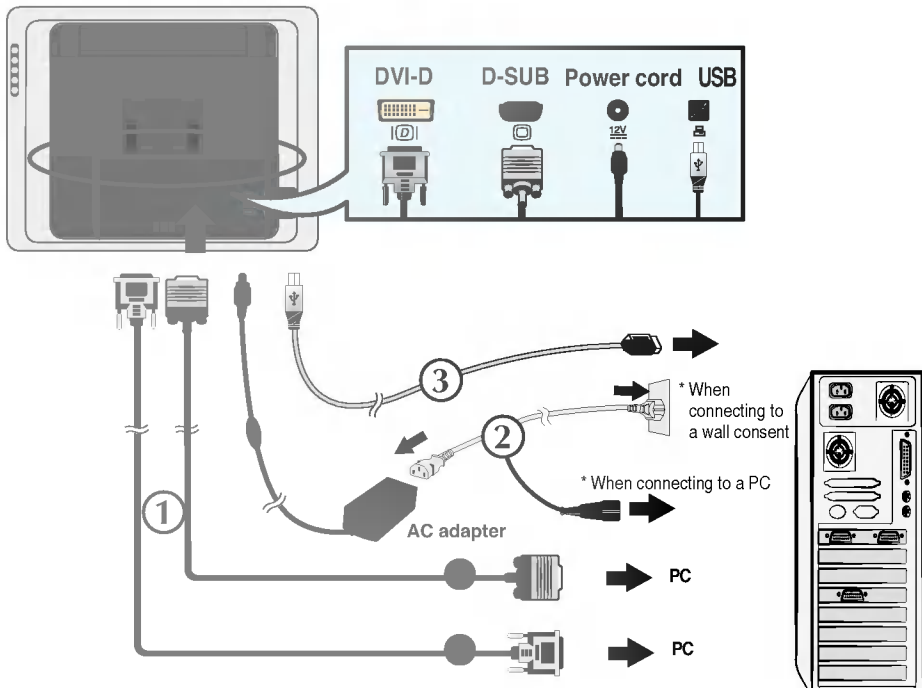
● Basic connection – connecting a signal input cable/power cord



Hold the middle of the back door at the rear side of the monitor and push down to open.

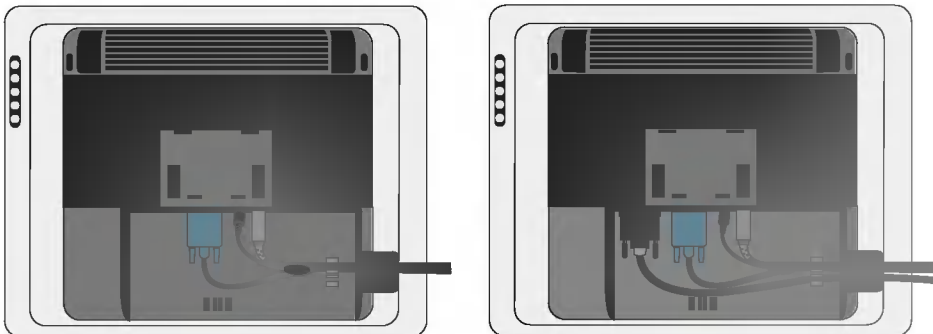
Connect the signal input cable ① first and then, power cord ② and USB cable ③ .

- When connecting with a D-Sub signal input cable/For IBM.
- When connecting with a DVI signal input cable.




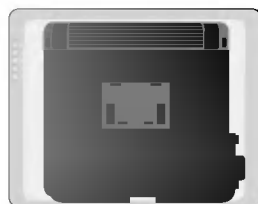
Connect the cables as described below !

Please refer to the following figure to tie up the cables.
Once the cable is connected up as shown in the figure, it will be arranged properly, which facilitates stand angle adjustment.

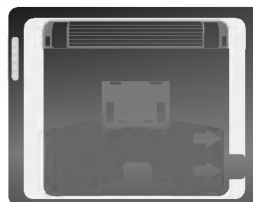


Close the back door when the connection is complete

Press the Power button  on the front side of the monitor to turn it on.
When the power is on, “Self Image Setting Function” function will start automatically. (Supported for the analog signal only.)



Match up the left upper groove of the back door to the corresponding side before fixing it in place.



Then, gently lift the middle of the back door and bend it to fit into the right side groove.



Note

What is the “Self Image Setting Function” function?

This function provides the optimal screen state for the user. When you connect the monitor for the first time, automatic screen adjustment will begin for each type of signal. If you want to adjust the screen while it is in use or execute this function manually, press the AUTO button at the front side of the monitor.

Alternatively, execute the “Preset Mode” menu in the OSD menu. However, note that all other menus except the language menu will be initialized at the same time if you execute the “Preset Mode” menu.

- To connect to two PCs
Connect the signal cables (DVI and D-Sub) to each computer respectively.
You can select the computer to use using the SOURCE button on the front of the monitor.
- Directly connect to the multi tab integrated with a conductor, or an earthed wall power outlet.
- You cannot use tablet drive and application software on Macintosh.

● Installing USB Tablet Manager (tablet running driver)


You should install the tablet running driver before using the tablet function.

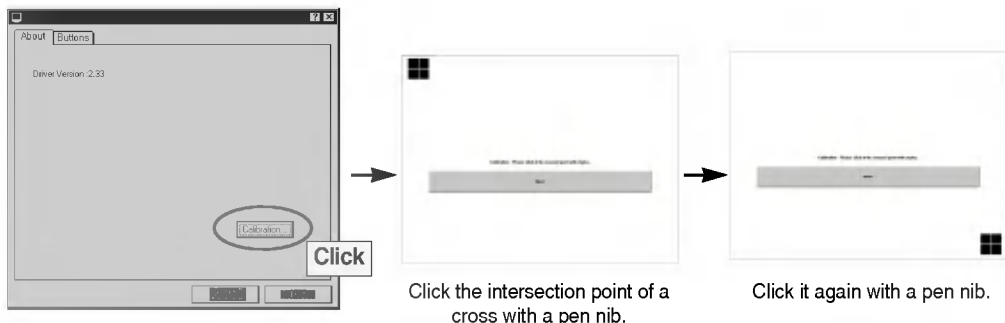
- First, see if the signal input cable, power cord and USB cable are connected properly. Then, install the driver as described below.
- The main window will be automatically displayed when you insert the software CD into your CD-ROM driver, which is included in the User's Manual. Install the “**USB Tablet Manager**” driver first and set your preferred options.



■■■ USB Tablet Manager

■ About

- Click the USB Tablet Manager icon and follow the driver installation instructions. Then, restart your computer. When installation is completed, the USB Tablet icon () will appear on the Windows Task Bar. Click the icon. When you install the tablet monitor for the first time, the pen touch position may be different from that of the cursor. To adjust the touching position, click the **Calibration** button and take the following steps.



You can download the latest software from the following web site.

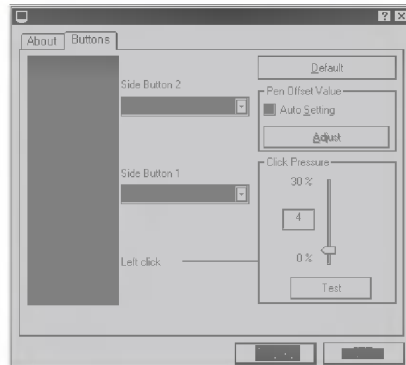
<http://www.lge.com>
<http://www.flatron.com>



■ Buttons

(1) Side button

: You can set the function of the pen side button. By default, the upper side of the side button (Side Button 2) triggers a double click event, whereas the lower side (Side Button 1) triggers a right mouse click event.



(2) Pen offset value

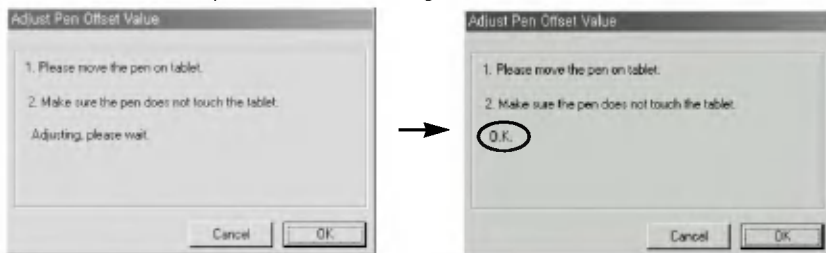
: The tablet monitor detects the power (pressure) when you touch the screen with a pen. If the pressure sensitivity is not appropriate due to pen replacement or computer restart-up, calibrate the pen offset value appropriately.

- Auto Setting: If you click on this check box, the pen offset value will be automatically adjusted.

- Adjust: You can adjust pen pressure (sensitivity) manually.

When you un-check the Auto Setting check box and click the Adjust button, the following message will be displayed. Touch the screen with a pen. Then, pressure (sensitivity) sensed by the screen will be set. Once touching is detected, the "Adjusting, please wait" message will be changed to the "OK" message.

Press the button to complete the value setting.



(3) Click Pressure

: You can set "click pressure" from 0% to 30%. You can easily select pressure sensitivity among pre-set values in the USB tablet drive. Weaker pressure will be applied as the value decreases.

(3) Test

: You can test the settings. Click the Test button to pop up the window where you can test pen pressure (sensitivity)

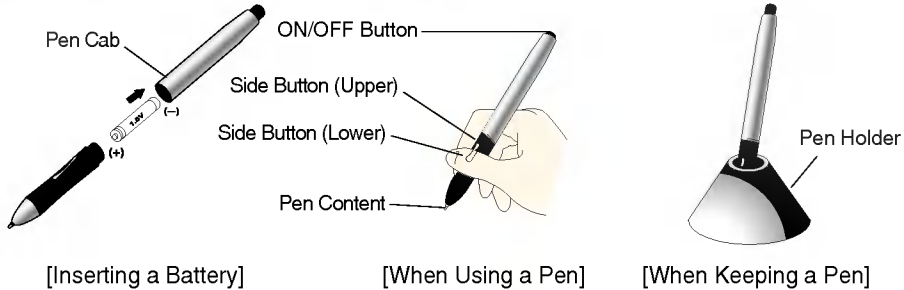
(4) Default

: Click this button to return to the default setting values.



Using a Pen

Name and Function of the Parts



Open the pen cap and insert the provided battery into it. Hold the pen as if you're holding a normal pen or pencil. Press the side button using your thumb or index finger.

- 1. ON/OFF button.**
- 2. Side Button:** You can set the right/left mouse button or double click function. Refer to “**How to Use USB Tablet Manager**” (Page A11) on the details of function setting.
- 3. Pen Content:** When the pen content is worn out, replace it with new one, which is included in the product.

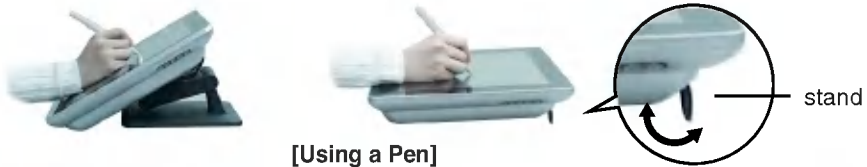
Using a Pen

- 1. Pointing:** The screen point moves when you move a pen nib on the tablet screen, not touching it but moving just over it.
- 2. Click:** Clicking the screen with a pen has the same effect as that of a mouse.
- 3. Double Click:** Rapidly click the same screen position with a pen twice to imitate a mouse double click. Or press the upper side button.
- 4. Drag:** Drag the pen while holding the pen on the screen.



Note

To use the pen side button as a right mouse button, click the side button while not touching the pen on the screen.



[Using a Pen]

Replacing a Pen Content

If you use a pen for a long time, the pen content can be worn out, which causes a sharp angle and damage to the LCD surface. Make sure to replace the pen periodically.

- 1. Taking out the pen:** Grasp the edge of the pen and pull out using tweezers or pincers.
- 2. Inserting a new pen:** Gently insert the replacement pen software until it comes to a stop. If you apply too much force, the pen may be bent or broken.



● Tablet Application Software

Install the provided software to use a tablet monitor more usefully and in various ways.

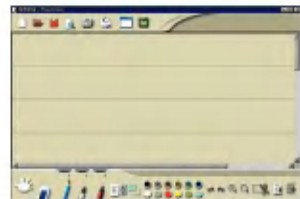
Insert the software CD-ROM included in this manual into the PC DC-ROM drive. Then, the main window will be automatically populated. Click the icon of the software to install and follow the instructions displayed on the screen.



■ Free Notes

Free Notes is an exclusive document handling program that enables you to import the picture like a general word processor and modify a picture or a handwritten document, using various modes displayed at the bottom of the window. The composed document or picture can be saved with the file extension of "*.fns" or "*.jpg". The file saved with the "*.fns" extension can be opened and modified by "FreeNotes" program installed in other PC.

You can send a composed picture or a text as an e-mail attachment or print out.

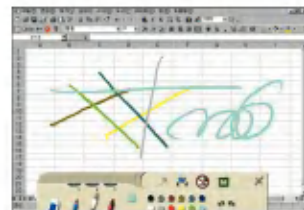


[Example of Using Free Notes]

■ Office Ink

Office Ink is the bundle software include in Free Notes. Unlike Free Notes, you can input a picture or handwrite letters on the background screen freely using the pen with various pen touch techniques and colors. However, Office Ink is designed for instant pen touch and the file saving function is provided like Free Notes.

However, you can use this program usefully to highlight a lecturing item or add a comment, instead of a pen.



[Example of Using Office Ink]

■ Power Presenter RE

Power Presenter RE is a program designed to be used with PowerPoint presentations. It enables you to highlight the section to emphasize, or provide supplementary description using a whiteboard or blackboard. The presented picture or text can be saved as "*.jpg", or sent to other person as an e-mail attachment. The recording function can be used conveniently for repetitive training or presentation. Since Power Presenter RE is solely designed for presentation, instead of a picture or other purposes, only the limited number of colors is provided.

You can use Power Presenter RE with MS PowerPoint or other application programs.

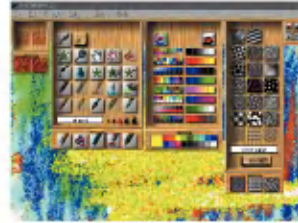


[Example of Using Power Presenter RE]



Art Dabblers

Art Dabblers from Corel, the specialized graphic tool vendor, allows you to present the graphics with rich texture selection and modification as well as various types of pens and colors. Its text input function enables you to enter the description on the picture, if necessary. The presented graphic can be saved with various formats. You can also create a simple animation using Art Dabblers.



[Example of Using Art Dabblers]


Acrobat Reader

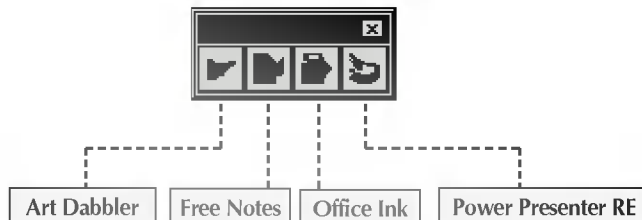
User's manuals of the application programs are provided as a PDF file. Please install Acrobat Reader to retrieve the user's manual.

You can retrieve the user's manual by selecting Windows Start -> Programs.

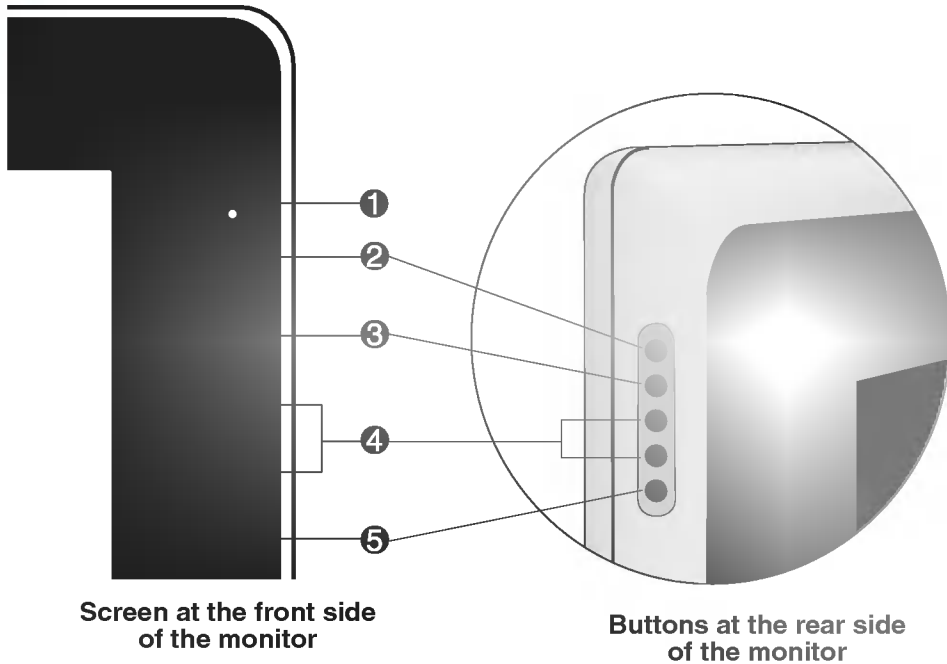
E-Manual

settings and functions of the tablet pen will be displayed.

- When the application program is successfully installed, the AP Manager icon () will appear on the Task Bar. Click the icon to pop up the AP Manager window. When the program is running, the icon can be used as a shortcut key. Click once to start the program.



Name of the Buttons on the Screen Adjustment Unit



1 Power LED

A green LED will be displayed in a normal operation mode, or an orange LED will be displayed in a power saving mode.

2 Power button

Press the POWER button to turn the power on. Press the button again

3 MENU/EXIT button

- Shows or hides the OSD (On Screen Display) menu.
- Lock/Unlock OSD – Locks or unlocks the OSD adjustment function.
To lock the OSD menu, press the MENU button for 5 seconds. The “**OSD Locked**” message will be displayed and the screen will be locked. To release OSD menu locking, press the MENU button for 5 seconds again. The “**OSD Unlocked**” message will appear and the OSD menu will be unlocked.



OSD Locked



OSD Unlocked

4 >< button

Use this button to select the icon or make an adjustment in the OSD (On Screen Display) menu.

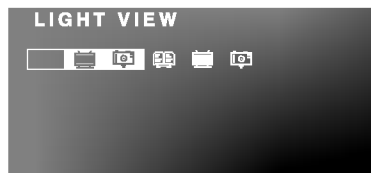
SOURCE > button

When two computers are connected, use this button to select the input signal for the destination computer.

If only one computer is connected, it will be recognized automatically.

Lightview < button

Use this button to select the optimized image conditions, depending on the surrounding environment (brightness, type of the image). See the page A22 for more details.

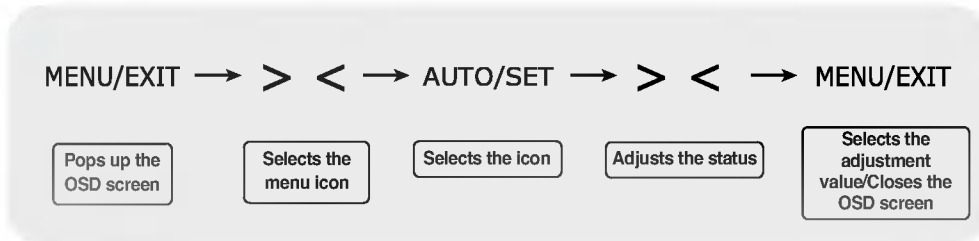


5 AUTO/SET button

- Select the icon to adjust in the OSD screen.
- ***Automatic screen adjustment function** - The screen will be automatically adjusted when you press the AUTO/SET button. (See the page A17)



● Adjustment on the OSD (On Screen Display) Screen



■ Press the MENU button to open the OSD screen.

■ Adjust the OSD menu item using the > < button.
When the menu icon is selected, press the AUTO/SET button


■ Adjust the item values using the > < button. To move down to the sub-menu or other menu, press the AUTO/SET button to move.

■ To select other functions or to return to the previous screen, press the MENU button again.
Press the MENU button twice to close the OSD screen.

■■■ Automatic Saving Function

When you select another menu or close the OSD screen after changing the value while the OSD screen is open, the adjusted value will be automatically saved. Even though you don't close the screen after adjustment, the OSD will disappear automatically and the adjusted values will be saved accordingly.

● Adjusts the OSD screen easily and automatically...

You need to adjust the screen if you connect the monitor to the new computer or change the mode. 
Refer to the following description to keep the screen in an optimal state.

Press the **AUTO/SET** button to carry out automatic screen adjustment that best fits into the current screen mode. If adjustment is found to be unsatisfactory, you may need to adjust screen position, frequency or brightness manually in the OSD menu. (Supported only for the analog signal only.)



Note

OSD(On Screen Display)

The OSD screen provides graphical presentation of the screen adjustment state so that you can change the setting visually.

[Note] The language displayed in the monitor may differ from the one in the User's Manual.



OSD Adjustment Menu

Main Menu	Sub-menu	A	D	Function Description
PICTURE	Brightness	●	●	You can adjust screen contrast and brightness
	Contrast	●	●	
	Gamma	●	●	
COLOR	PRESET	●	●	You can set the preferred screen color
	RED	●	●	
	GREEN	●	●	
	BLUE	●	●	
POSITION	H POSITION	●		You can adjust screen position
	V POSITION	●		
TRACKING	CLOCK	●		You can adjust screen clock and phase
	PHASE	●		
FACTORY RESET	FACTORY RESET	●	●	You can restore the initial monitor settings
	WHITE BALANCE	●		
SETUP	LANGUAGE	●	●	You can adjust the screen to the circumstances
	OSD H POSITION	●	●	
	OSD V POSITION	●	●	
LIGHTVIEW	DAY TEXT/MOVIE/PHOTO	●	●	You can select or adjust the image conditions according to the environment
	NIGHT TEXT/MOVIE/PHOTO	●	●	
	USER1/2	●	●	
	NORMAL	●	●	
<p>● : Adjustable items A : Analog signal D : Digital signal</p>				



Note

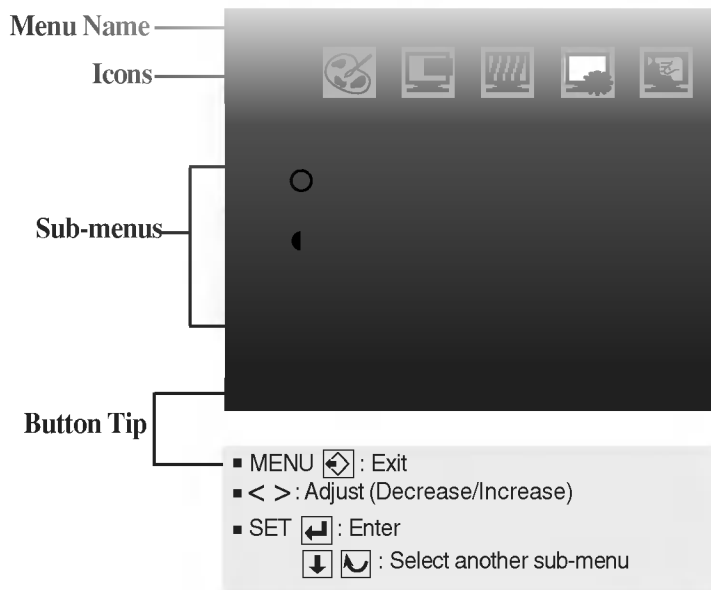
- The icon layout can be different for each model. (A19 ~ A22)
- When you set the menu in the "Light View" menu, the "Picture" and "Color" menus are automatically set. If you select the "Picture" or "Color" menu in the "Light View" menu mode, the Light View menu mode will be automatically released and changed to the "normal" mode.



OSD(On Screen Display) Screen Adjustment

You were introduced to the procedure of selecting and adjusting an item using the OSD system. Listed below are the icons, icon names, and icon descriptions of the all items shown on the Menu.

Press the MENU Button, then the main menu of the OSD appears.



Note

OSD (On Screen Display) menu languages on the monitor may differ from the manual.



PICTURE



BRIGHTNESS

To adjust the brightness of the screen.

CONTRAST

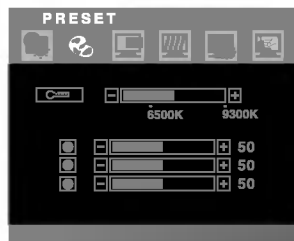
To adjust the contrast of the screen.

GAMMA

Set your own gamma value. : -50/0/50
On the monitor, high gamma values display whitish images and low gamma values display high contrast images.



COLOR



PRESET

Select the screen color.

... 5700K : Slightly bluish white.

... 6500K

... 7500K

... 8500K

... 9300K : Slightly bluish white.

RED

Set your own red color levels.

GREEN

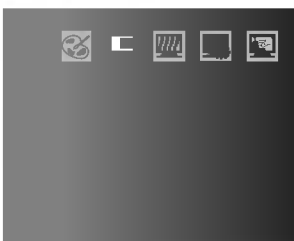
Set your own green color levels.

BLUE

Set your own blue color levels.



POSITION



H POSITION

To move image left and right.

V POSITION

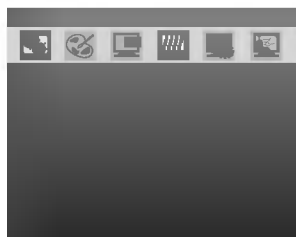
To move image up and down.

■ MENU : Exit ■ < : Decrease ■ > : Increase ■ SET : Select another sub-menu





TRACKING



CLOCK

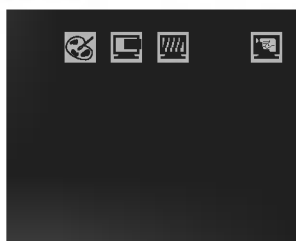
To minimize any vertical bars or stripes visible on the screen background. The horizontal screen size will also change.

PHASE

To adjust the focus of the display. This item allows you to remove any horizontal noise and clear or sharpen the image of characters.



FACTORY RESET



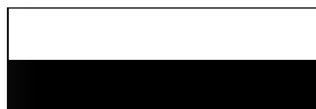
FACTORY RESET

Restore all factory default settings except **"LANGUAGE."**

WHITE BALANCE

If the output of the video card is different the required specifications, the color level may deteriorate due to video signal distortion. Using this function, the signal level is adjusted to fit into the standard output level of the video card in order to provide the optimal image. Activate this function when white and black colors are present in the screen.

For example



SETUP



LANGUAGE

To choose the language in which the control names are displayed.

OSD H POSITION

To adjust horizontal position of the OSD window on the screen.

OSD V POSITION

To adjust vertical position of the OSD window on the screen.

■ MENU : Exit ■ < : Decrease ■ > : Increase ■ SET : Select another sub-menu



■■■ Press the LIGHTVIEW(<) Button, then the main menu of the OSD appears.

LIGHTVIEW



DAY
NIGHT

This feature lets you easily select the best desired image condition optimized to the environment (ambient illumination, image types etc).

--- DAY : Bright ambient illumination

--- NIGHT : Dark ambient illumination

TEXT : For text images (Word processing etc.)

MOVIE : For animation images in videos or movies


PHOTO : For pictures or drawings



1 USER 1
2 USER 2

To adjust the USER1/USER2 sub-menu function, Press the SET Button

User can preset the **BRIGHTNESS**, **CONTRAST**, **GAMMA**, and **PRESET** levels and save them for later use.

Select the  sub-menu using the **SET button** and save the **YES** value using the **-/+ buttons**.



⊗ NORMAL

This is under normal operating conditions.

■ MENU : Exit ■ < : Decrease ■ > : Increase ■ SET : Select another sub-menu



● Power cord is properly connected to the monitor?

● Power LED is on?

● The power is on, the power LED is green, and the screen is extremely dark?



● Power LED is orange?

● “Out of Range” message appears?

● “Check Signal Cable” message appears?

• Make sure to connect the power cord to the monitor.

• See if the power switch is on.

• Adjust brightness () and contrast () again.

• If the monitor is in the power saving mode, move the mouse or press any key to activate the screen again.

• The signal from the PC (video card) is out of the horizontal or vertical frequency range supported by the monitor. Adjust the frequency again by referring to the “Product Specification” in this manual.

***Maximum resolution**

D-Sub: 1024x768@75 Hz

DVI-D: 1024x768@75 Hz

• The signaling cable connecting PC and monitor is not connected. See if the signal cable is firmly connected.

● The “OSD Locked” message appears when you press the MENU button?

• The OSD locking function prevents unintentional change of the OSD settings. Press the MENU button for about 5 seconds to unlock then, the “OSD Unlocked” message appears.

● Afterimage appears when the monitor is turned off?

• If you use the same specific screen for a long time, the monitor pixel can be damaged quickly. To use the monitor longer, use the screen saver program.



Note

Vertical frequency : Tens of images should be replaced within a second on the monitor to make you to see images on the screen. The rate of changing the images within a second is called by “vertical frequency” or “refresh rate” with the unit of Hz.

Horizontal frequency : The horizontal period is a time needed to display one horizontal line. When the horizontal period is divided by one, the number of horizontal lines can be figured out that can be displayed for a second, which is called by “horizontal frequency” with the unit of kHz.



Screen image is displayed abnormally

● Screen position is wrong?

- Press the AUTO/SET button to adjust the screen automatically with the optimal state that fits into the currently selected mode.

If you're not satisfied with the adjusted screen, use the "Position" OSD menu to manually adjust the screen position.

● Vertical slim lines appear on the background screen?

- See if the resolution or the frequency of the video card is set within the range supported by the monitor. If not, set to the recommended resolution at "Control Panel" → "Display" → "Setting" menu.

- Press the AUTO/SET button to adjust the screen automatically with the optimal state that fits into the currently selected mode.

If you're not satisfied with the adjusted screen, use the "Clock" OSD menu to manually remove the vertical lines.

● Horizontal noise appears or letters are blurred?

- Press the AUTO/SET button to adjust the screen automatically with the optimal state that fits into the currently selected mode.

If you're not satisfied with the adjusted screen, use the "Phase" OSD menu to manually adjust it.

Screen color is displayed abnormally

● Screen is de-colored (16 colors)?

- Change the number of colors to 24 bits (true color) or better.

: Windows Control Panel → Display → Setting → Color Table.

● Screen color is unstable or mono-color?

- Check signaling cable connection. If not properly connected, connect it again. Or, plug in the PC video card firmly.

● Dots appear on the screen?

- You may see several pixel dots (red, green, white or black) while using the monitor due to the characteristics of the LCD panel. It is not related with monitor performance and is not a malfunction.

When the monitor is connected, the "Unknown Monitor" message appears


● Monitor driver is installed?

- Install the provided monitor driver again or download the driver from the LG Electronics web site (<http://www.lge.com>).

See if the plug & play function is supported by the video card by referring to the video card user's manual.

Troubleshooting


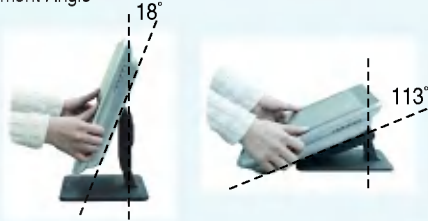
Tablet pen is not working normally

- **Tablet pen is not working?**
 - See if the tablet driver (USB Tablet Manager) is properly installed. (See the page A10)
 - See if the USB cable is connected properly. If you have connected the USB cable again, wait until the USB tablet icon  appears on the Windows Task Bar before using the pen. The icon appears after 3 – 4 seconds after connecting the USB cable.
 - See if the battery is inserted into the pen, or the battery is not flat. If it is flat, replace with new one.
 - See if the battery polarity is correct (+/-).
- **I cannot draw a picture or write a letter when I move the tablet pen.**
 - You should apply a certain amount of pressure to the pen to draw a picture or write a letter. If it is inconvenient for you to apply excessive force, adjust pressure (sensitivity) by setting “Pen Offset Value” or “Click Pressure” by referring to the page A11.
- **I cannot click the icon on the background screen with a tablet pen.**
 - Clicking will be disabled in the drawing menu of “Office Ink” or “Power Presenter RE” – tablet application software.
 - 1) When running Office Ink: Click the Cancel button in the toolbar, or exit from the program.
 - 2) When running Power Presenter RE: Select the mouse icon in the toolbar window to activate the pen mouse function.
- **I cannot double click the icon properly on the background screen with a tablet pen**
 - You should double click on the precise position quickly. If it is not working, use the upper pen side button. Or, set the side button function manually by referring to the page A11.

Pen touch position does not match with the cursor position

- **Tablet pen touch position deviates from the cursor position by more than 5cm?**
 - The tablet driver is not recognized properly. Plug out the USB cable and plug it in again. If you meet up with the same symptom, remove the driver and install it again.
- **Pen touch position does not match with the cursor position?**
 - Adjust the position again using the About – Calibration menu in the USB Tablet Manager. (See the page A10)

Product specification is subject to change without a prior notice to improve the product.

LCD Panel	Type	15 inch (38.0 cm) TFT (Thin Film Transistor) LCD (Liquid Crystal Display) Panel Size of Visible Diagonal Line: 38.0cm	
	Pixel Pitch	0.297mm	
Video Signal	Max. Resolution	Digital/Analog: 1024x768 @ 75 Hz	
	Recommended Resolution	1024x768 @ 60 Hz	
	Horizontal Frequency	Digital/Analog: 30 ~ 63 kHz	
	Vertical Frequency	56 ~ 75 Hz	
	Synchronization Type	Separate/Composite/SOG (Sync On Green)/ Digital	
Input Connector	15 pin D-Sub Type/DVI-D (Digital)		
Power	Rated Voltage	DC 12V  3A	
	Power Consumption	Normal Operation : 35W	
		Power-saving Preparation Mode ≤ 3W	
		Power-saving Mode ≤ 3W	
Dimension/Weight	Monitor Dimension (W x L x H)	385.5x211.1x354.5mm	
	Weight (excl. packaging materials)	5.85kg	
	Stand Adjustment Angle		
Environmental Conditions	Operational	Temperature 10°C ~ 35°C	Humidity 10% ~ 80%
	Storage	Temperature -20°C ~ 60°C	Humidity 5% ~ 95%



■■■ PC Mode – Preset Mode

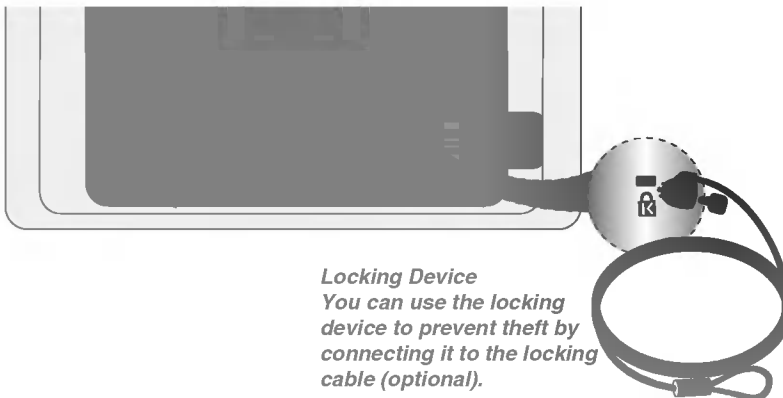
1	VGA	640 x 350	31.468	70
2	VGA	720 x 400	31.468	70
3	VGA	640 x 480	31.469	60
4	VESA	640 x 480	35.000	66.67
5	VESA	640 x 480	37.861	72.8
6	VESA	640 x 480	37.500	75
7	VESA	800 x 600	35.156	56.25
8	VESA	800 x 600	37.879	60
9	VESA	800 x 600	48.077	72
10	VESA	800 x 600	46.875	75
11	MAC	832 x 624	49.725	75
*12	VESA	1024 x 768	48.363	60
13	VESA	1024 x 768	56.476	70
14	VESA	1024 x 768	60.023	75

*Recommended Resolution

■■■ Power LED

Normal Operation	Green
Power-saving Preparation Mode	Orange
Power-saving Mode	Orange

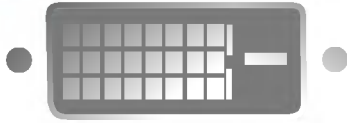
- **Locking Device** - Check the locking device by opening the back door at the rear of the monitor.



Locking Device
You can use the locking device to prevent theft by connecting it to the locking cable (optional).



DVI-D

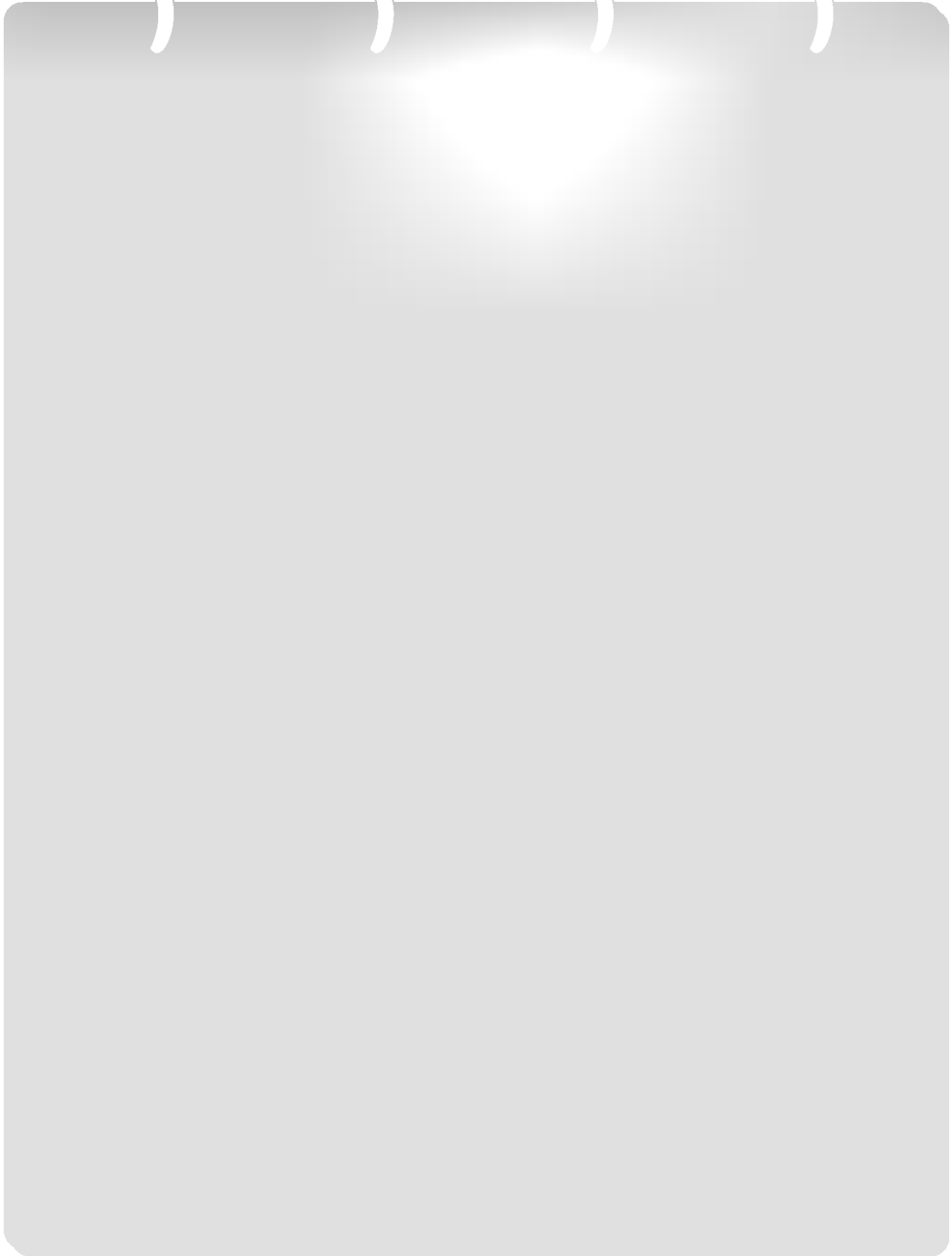


1	T.M.D.S. Data 2-
2	T.M.D.S. Data 2+
3	T.M.D.S. Data 2/4 Shield
4	T.M.D.S. Data 4-
5	T.M.D.S. Data 4+
6	DDC Clock
7	DDC Data
8	Analog Vertical Synchronization
9	T.M.D.S. Data 1-
10	T.M.D.S. Data 1+
11	T.M.D.S. Data 1/3 Shield
12	T.M.D.S. Data 3-
13	T.M.D.S. Data 3+
14	+5V Power
15	Groundings (return for +5V, horizontal and vertical synchronization)
16	Hot Plug Detect
17	T.M.D.S. Data 0-
18	T.M.D.S. Data 0+
19	T.M.D.S. Data 0/5 Shield
20	T.M.D.S. Data 5-
21	T.M.D.S. Data 5+
22	T.M.D.S. Clock Shield
23	T.M.D.S. Clock+
24	T.M.D.S. Clock-

T.M.D.S.(Transition Minimized Differential Signaling)



MEMO



Digitally yours ■■■■.....

