

# User's Guide

---

**L1730P** \*\*P

**L1930P** \*\*P

**M**ake sure to read the **Important Precautions** before using the product.  
Keep the User's Guide(CD) in an accessible place for future reference.

**S**ee the label attached on the back cover and quote this information to your dealer when you require service.

---

**This unit has been engineered and manufactured to ensure your personal safety, however improper use may result in potential e shock or fire hazards. In order to allow the proper operation of all safeguards incorporated in this display, observe the following basic rules for its installation, use, and servicing.**

## On Safety

Use only the power cord supplied with the unit. In case you use another power cord, make sure that it is certified by the applicable national standards if not being provided by the supplier. If the power cable is faulty in any way, please contact the manufacturer or the nearest authorized repair service provider for a replacement.

The power supply cord is used as the main disconnection device. Ensure that the socket-outlet is easily accessible after installation.

Operate the display only from a power source indicated in the specifications of this manual or listed on the display. If you are not sure what type of power supply you have in your home, consult with your dealer.

Overloaded AC outlets and extension cords are dangerous. So are frayed power cords and broken plugs. They may result in a shock or fire hazard. Call your service technician for replacement.

Do not Open the Display.

- There are no user serviceable components inside.
- There are Dangerous High Voltages inside, even when the power is OFF.
- Contact your dealer if the display is not operating properly.

To Avoid Personal Injury :

- Do not place the display on a sloping shelf unless properly secured.
- Use only a stand recommended by the manufacturer.

To Prevent Fire or Hazards:

- Always turn the display OFF if you leave the room for more than a short period of time. Never leave the display ON when leaving the house.
- Keep children from dropping or pushing objects into the display's cabinet openings. Some internal parts carry hazardous voltages.
- Do not add accessories that have not been designed for this display.
- During a lightning storm or when the display is to be left unattended for an extended period of time, unplug it from the wall outlet.



## On Installation

Do not allow anything to rest upon or roll over the power cord, and do not place the display where the power cord is subject to damage.

Do not use this display near water such as near a bathtub, washbowl, kitchen sink, laundry tub, in a wet basement, or near a swimming pool.

Displays are provided with ventilation openings in the cabinet to allow the release of heat generated during operation. If these openings are blocked, built-up heat can cause failures which may result in a fire hazard. Therefore, NEVER:

- Block the bottom ventilation slots by placing the display on a bed, sofa, rug, etc.
- Place the display in a built-in enclosure unless proper ventilation is provided.
- Cover the openings with cloth or other material.
- Place the display near or over a radiator or heat source.

Do not rub or strike the Active Matrix LCD with anything hard as this may scratch, mar, or damage the Active Matrix LCD permanently.

Do not press the LCD screen with your finger for a long time as this may cause some afterimages.

Some dot defects may appear as Red, Green or Blue spots on the screen. However, this will have no impact or effect on the display performance.

If possible, use the recommended resolution to obtain the best image quality for your LCD display. If used under any mode except the recommended resolution, some scaled or processed images may appear on the screen. However, this is characteristic of the fixed-resolution LCD panel.

## On Cleaning

- Unplug the display before cleaning the face of the display screen.
- Use a slightly damp (not wet) cloth. Do not use an aerosol directly on the display screen because over-spraying may cause electrical shock.

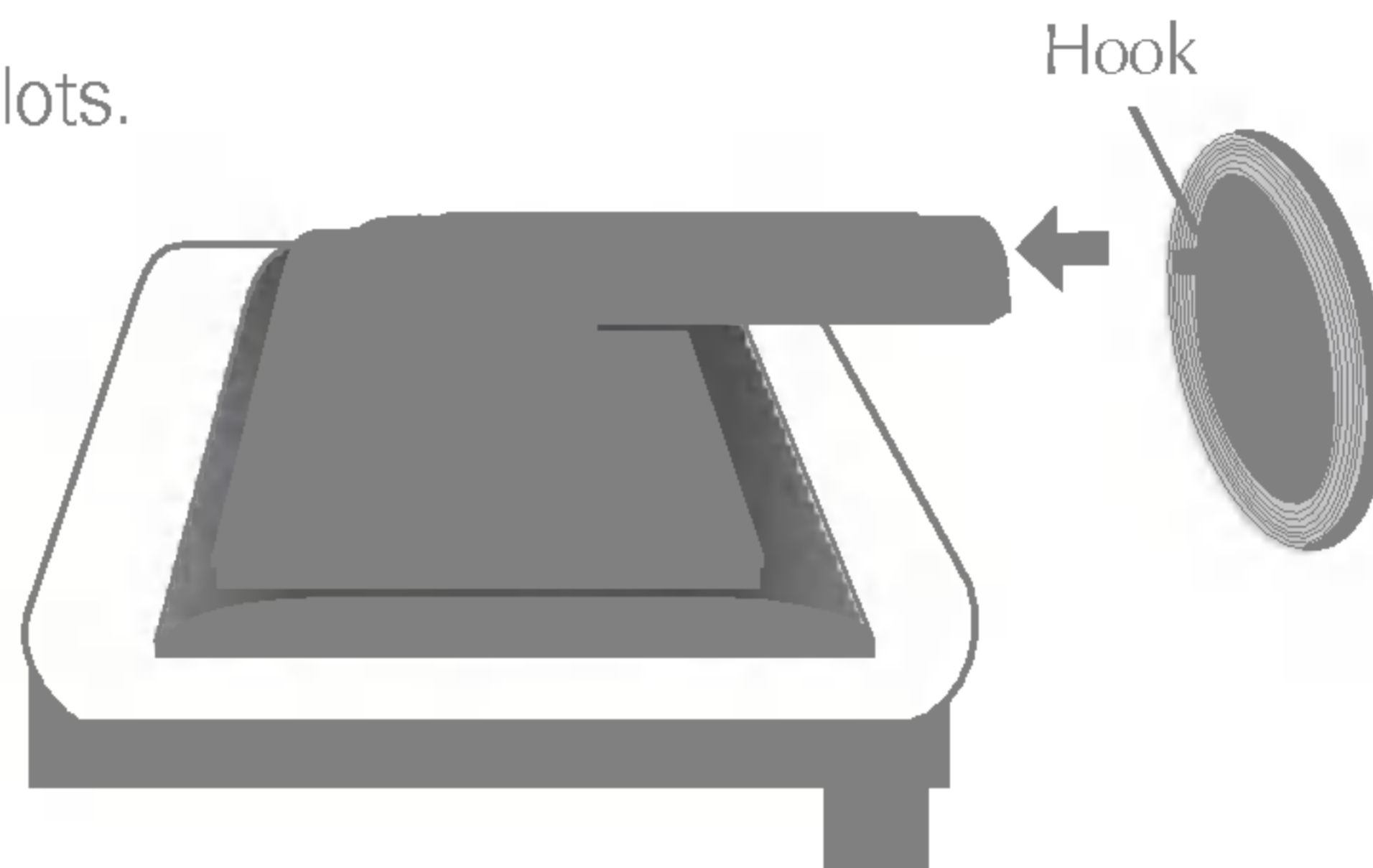
## On Repacking

- Do not throw away the carton and packing materials. They make an ideal container in which to transport the unit. When shipping the unit to another location, repack it in its original material.

- Before setting up the monitor, ensure that the power to the monitor, the computer system, and other attached devices is turned off.

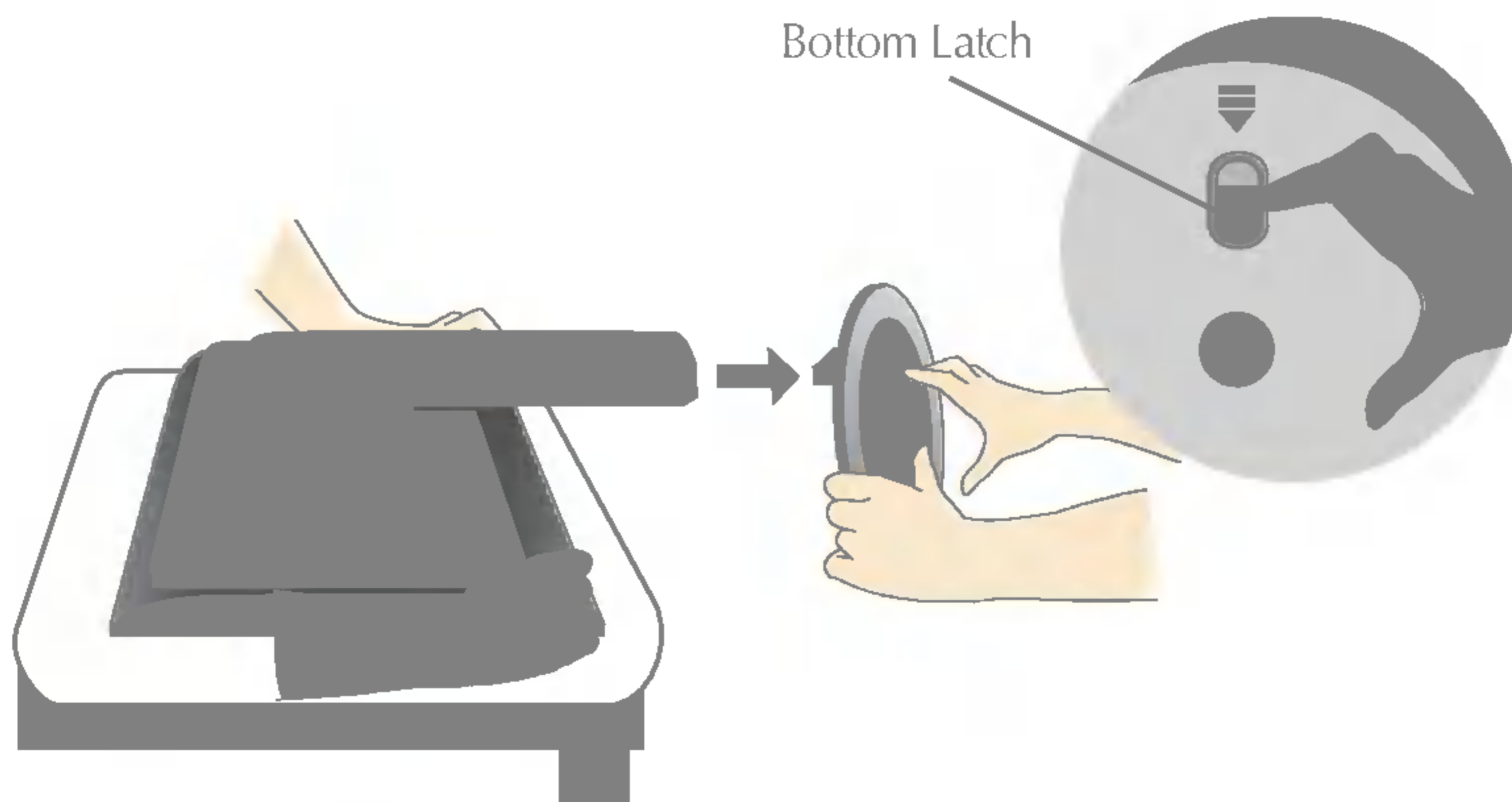
## Connecting the stand base

1. Place the monitor with its front facing downward on a cushion or soft cloth.
2. Align the hooks on the stand base with the matching slots in the base of the monitor.
3. Insert the hooks into slots.



## Removing the stand base

1. Place the monitor with its front facing downward on a cushion or soft cloth.
2. Hold the monitor while pressing the bottom latch downwards and pulling back the stand base, as shown in the figure.



### Important

- This illustration depicts the general model of connection. Your monitor may differ from the items shown in the picture.
- Once you connect the stand base, try not to disconnect it.
- Do not carry the product upside down holding only the stand base. The product may fall and get damaged or injure your foot.

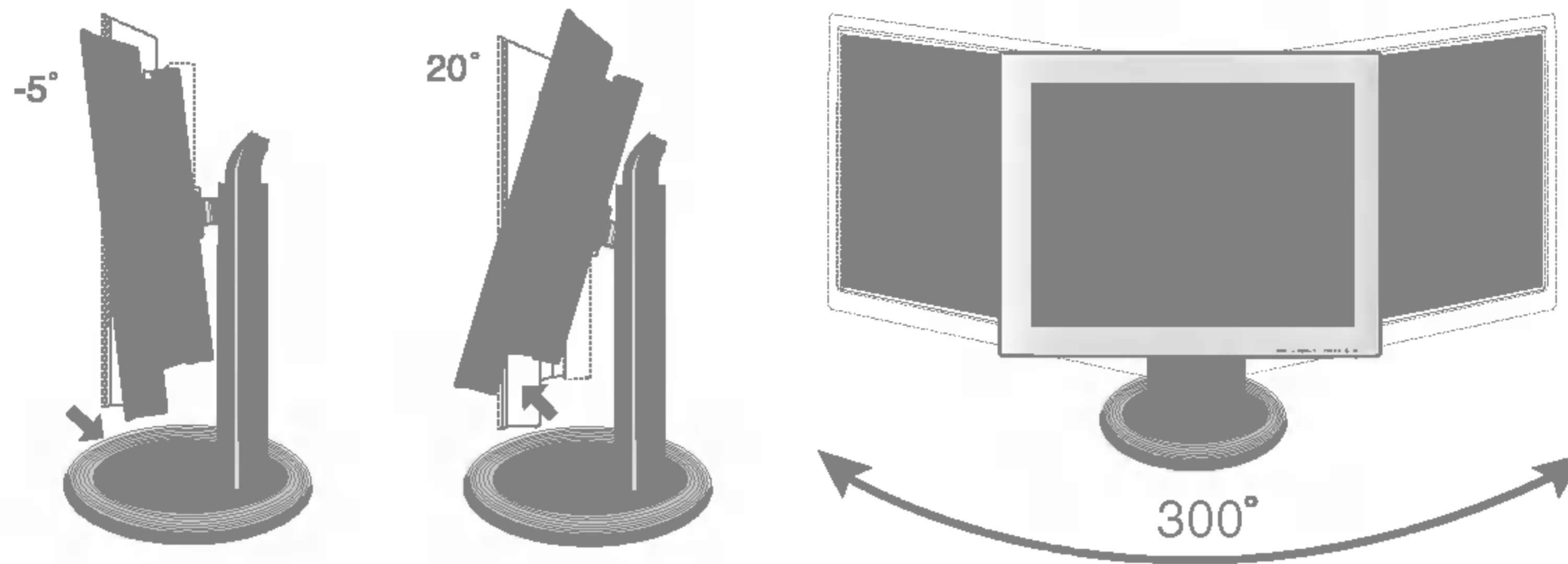


## Positioning your display

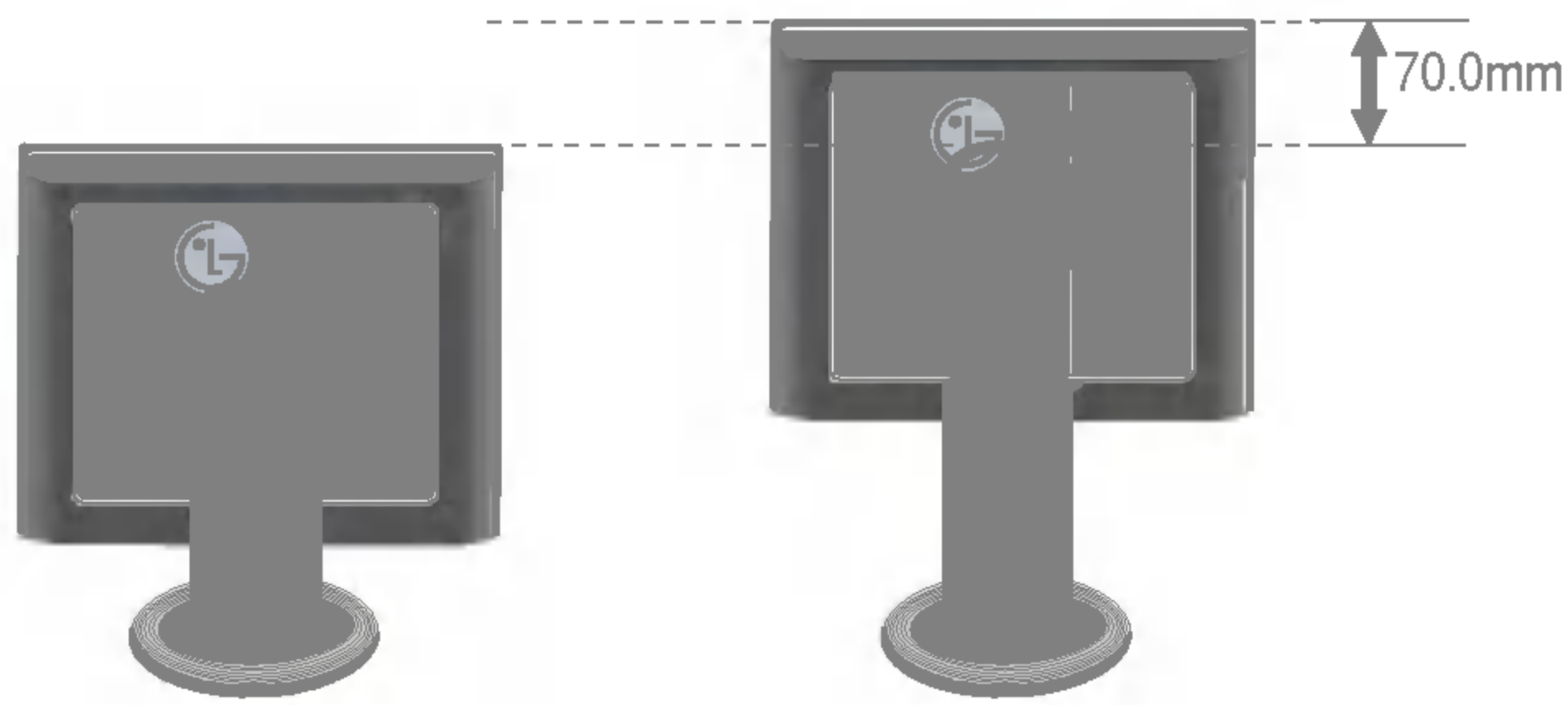
Adjust the position of the panel in various ways for maximum comfort.

■ Tilt Range :  $-5^{\circ} \sim 20^{\circ}$

■ Swivel :  $300^{\circ}$

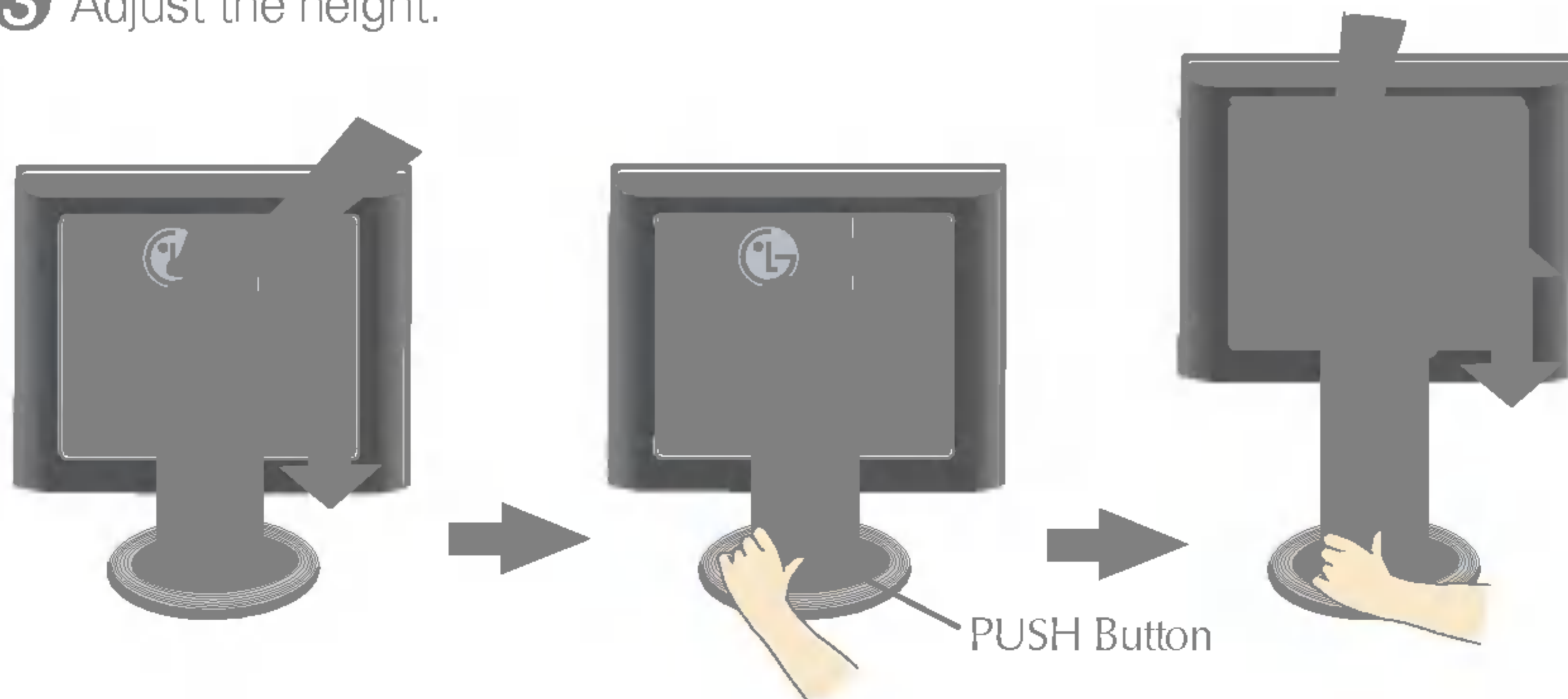


■ Height Range : maximum 2.76 inch (70.0mm)

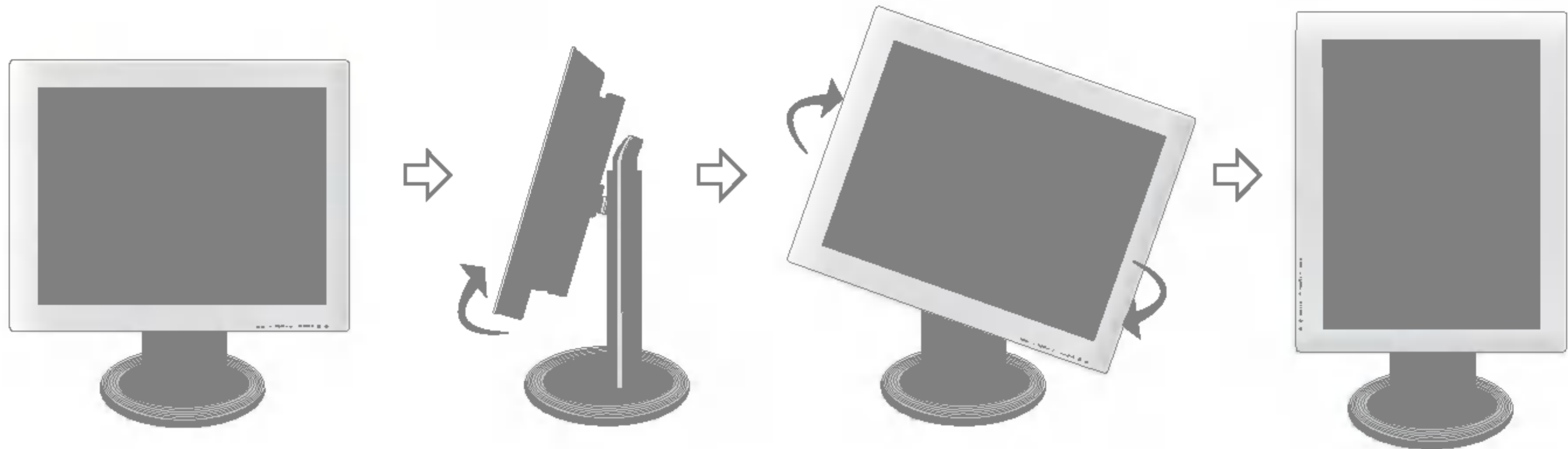


### ■ To adjust height of monitor

- 1 Push down the top of monitor
- 2 While pressing the PUSH button.
- 3 Adjust the height.



- **Landscape & Portrait :** You can rotate the panel 90° clockwise.  
(\* For detailed information, please refer to the Pivot Software CD provided.)



\* Make sure not to touch the floor when the head rotates to use the Pivot function.

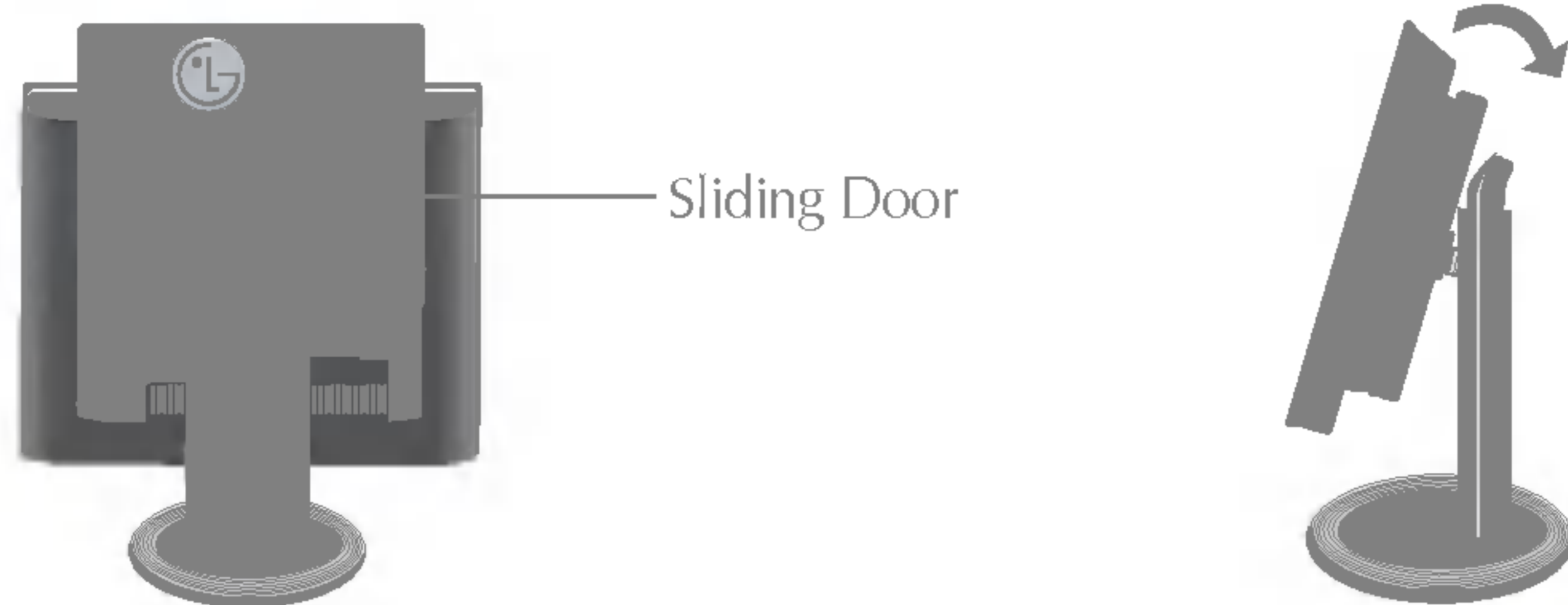
### **Ergonomic**

It is recommended that in order to maintain an ergonomic and comfortable viewing position, the forward tilt angle of the monitor should not exceed 5 degrees.

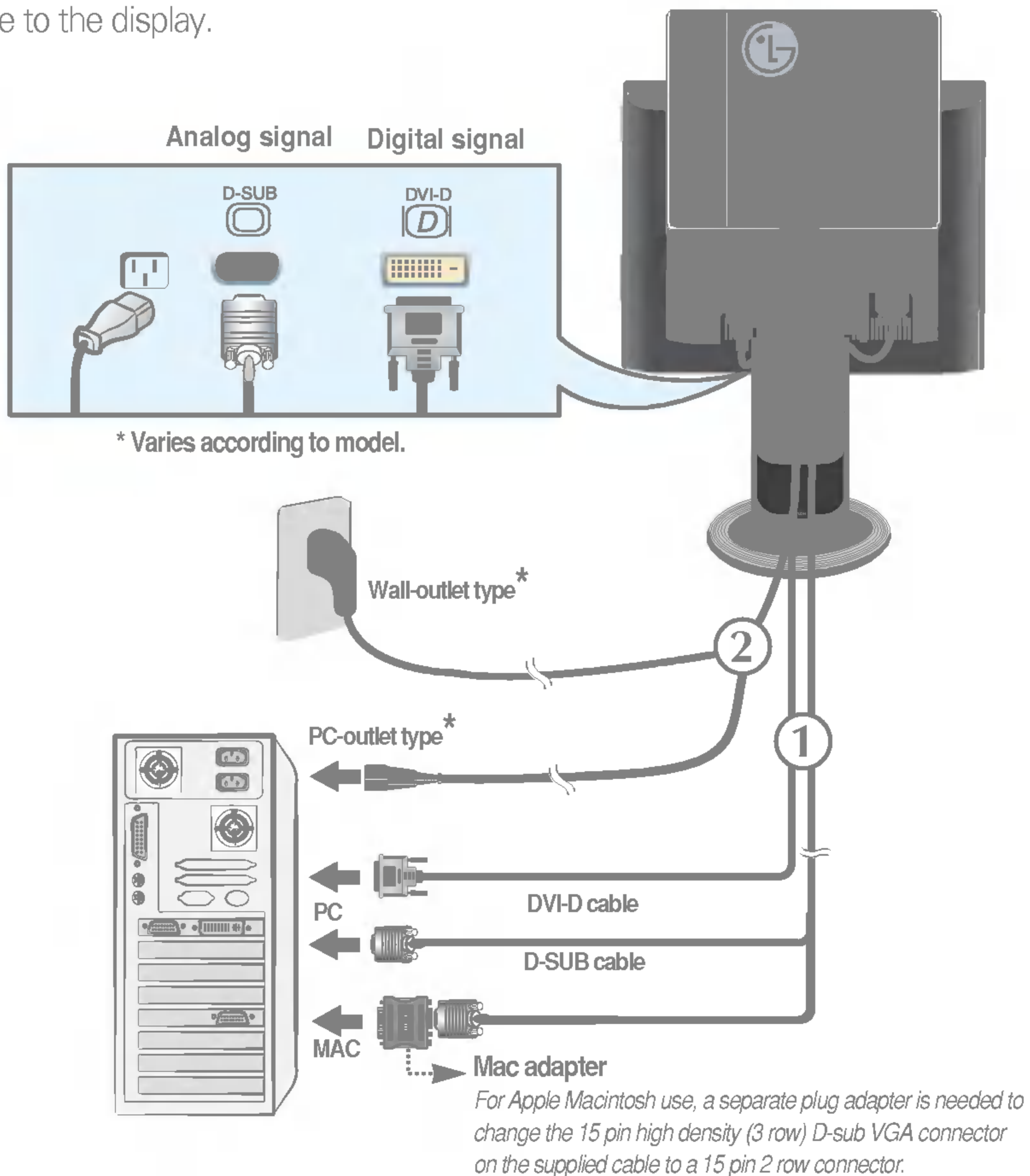


# Using the Computer

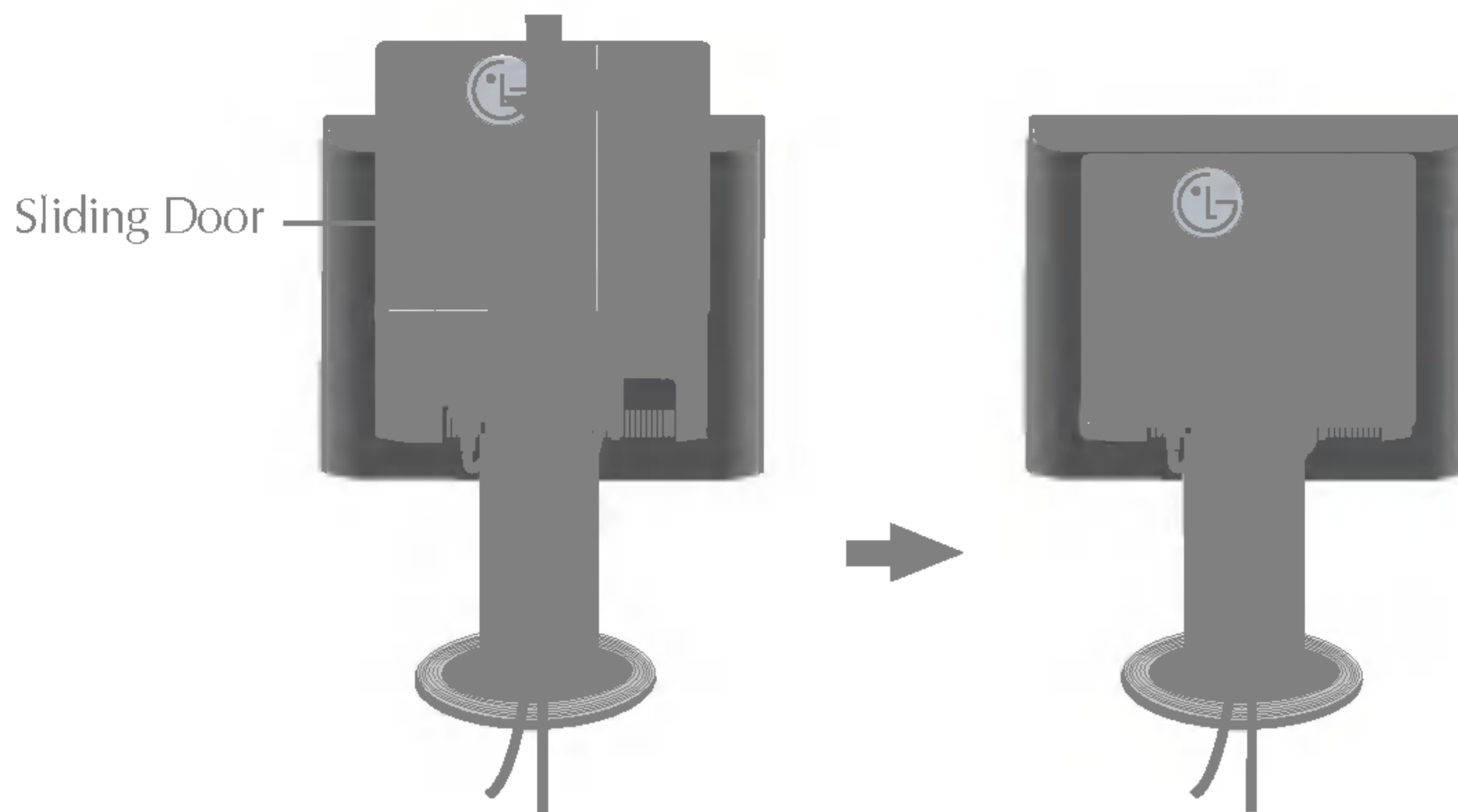
1. Slide up the **Sliding Door** and tilt the monitor backward for easily connecting the cables.



2. Connect the signal cable. When attached, tighten the thumbscrews to secure the connection.
3. Connect the power cord into a proper power outlet that is easily accessible and close to the display.



## 4. Slide down the **Sliding Door**.



## 5. Press button on the front switch panel to turn the power on. When monitor power is turned on, the **'Self Image Setting Function'** is executed automatically.



### NOTE

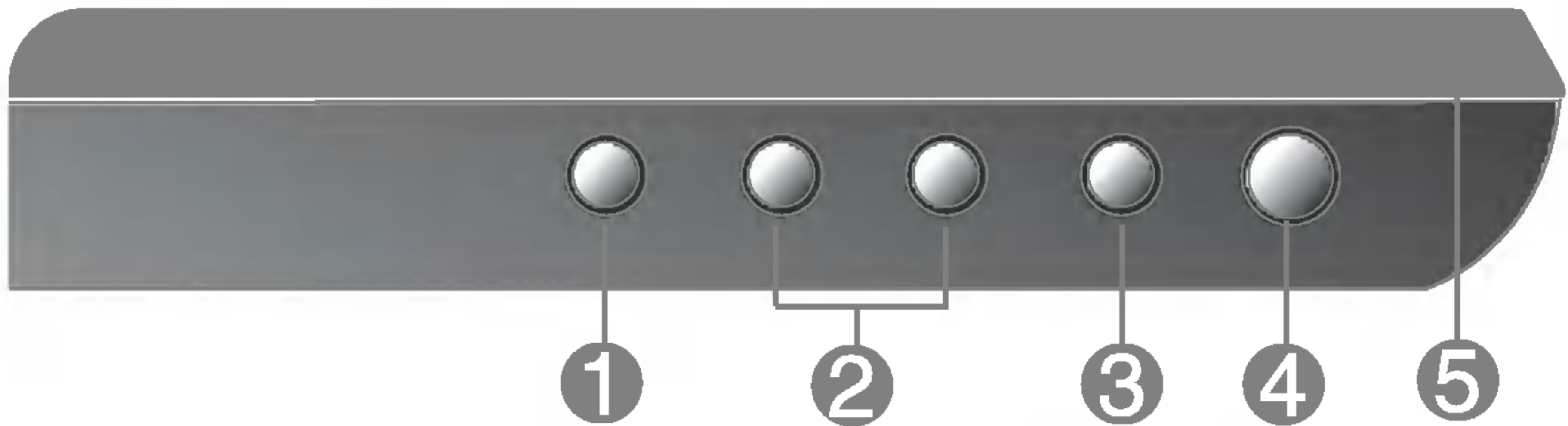
'**Self Image Setting Function**'? This function provides the user with optimal display settings. When the user connects the monitor for the first time, this function automatically adjusts the display to optimal settings for individual input signals. If you want to adjust the monitor while in use, or wish to manually run this function once again, push the 'AUTO' button on the front panel of the monitor. Otherwise, you may execute the 'FACTORY RESET' option on the OSD adjustment menu. However, be aware that this option initializes all the menu items except 'LANGUAGE'.





# Front Panel Controls




## Bottom



Control	Function
<p><b>1</b> MENU Button</p> 	<p>Use this button to enter or exit the On Screen Display.</p> <hr/> <p><b>OSD LOCKED/UNLOCKED</b></p> <p>This function allows you to lock the current control settings, so that they cannot be inadvertently changed. Press and hold the <b>MENU button</b> for 5 seconds. The message "<b>OSD LOCKED</b>" should appear.</p> <p>You can unlock the OSD controls at any time by pushing the <b>MENU button</b> for 5 seconds. The message "<b>OSD UNLOCKED</b>" should appear.</p>
<p><b>2</b> - + Buttons</p> <hr/> <p>- Button</p>	<p>Use these buttons to select or adjust functions in the On Screen Display.</p> <hr/> <p><b>f•Engine hot key</b></p> <p>For more information, refer to page A15</p> 
<p>+ Button</p>	<p><b>SOURCE hot key</b></p> <p>Use this button to make Dsub or DVI connector active. This feature is used when two computers are connected to the display. The default setting is Dsub.</p>



Control	Function
<b>3</b> SET/AUTO Button	<p>Use this button to enter a selection in the On Screen Display.</p> <hr/> <p><b>AUTO IMAGE ADJUSTMENT</b> When adjusting your display settings, always press the <b>SET/AUTO</b> button before entering the On Screen Display(OSD). This will automatically adjust your display image to the ideal settings for the current screen resolution size (display mode). The best display mode is</p> <p>17 inch monitor : <b>1280x1024</b> 19 inch monitor : <b>1280x1024</b></p> 
<b>4</b> Power Button	<p>Use this button to turn the display on or off.</p>
<b>5</b> Power (DPMS) Indicator	<p>This Indicator lights up green when the display operates normally. If the display is in DPM (Energy Saving) mode, this indicator color changes to amber.</p>



## Screen Adjustment

Making adjustments to the image size, position and operating parameters of the display is quick and easy with the On Screen Display Control system. A short example is given below to familiarize you with the use of the controls. The following section is an outline of the available adjustments and selections you can make using the OSD.

### NOTE

- Allow the display to stabilize for at least 30 minutes before making image adjustments.

To make adjustments in the On Screen Display, follow these steps:

**MENU → - + → SET/AUTO → - + → MENU**

- 1** Press the **MENU Button**, then the main menu of the OSD appears.
- 2** To access a control, use the **- or + Buttons**. When the icon you want becomes highlighted, press the **SET/AUTO Button**.
- 3** Use the **- / + Buttons** to adjust the image to the desired level. Use the **SET/AUTO Button** to select other sub-menu items.
- 4** Push the **MENU Button** once to return to the main menu to select another function. Push the **MENU Button** twice to exit from the OSD.

## Automatic save

With the OSD open, once you have made an adjustment the monitor automatically save any adjustments you have made, even if you exit the menu or open another menu. If you make an adjustment and then wait for the OSD to disappear, the adjustment will also be saved.



# On Screen Display(OSD) Selection and Adjustment

The following table indicates all the On Screen Display control, adjustment, and setting menus.

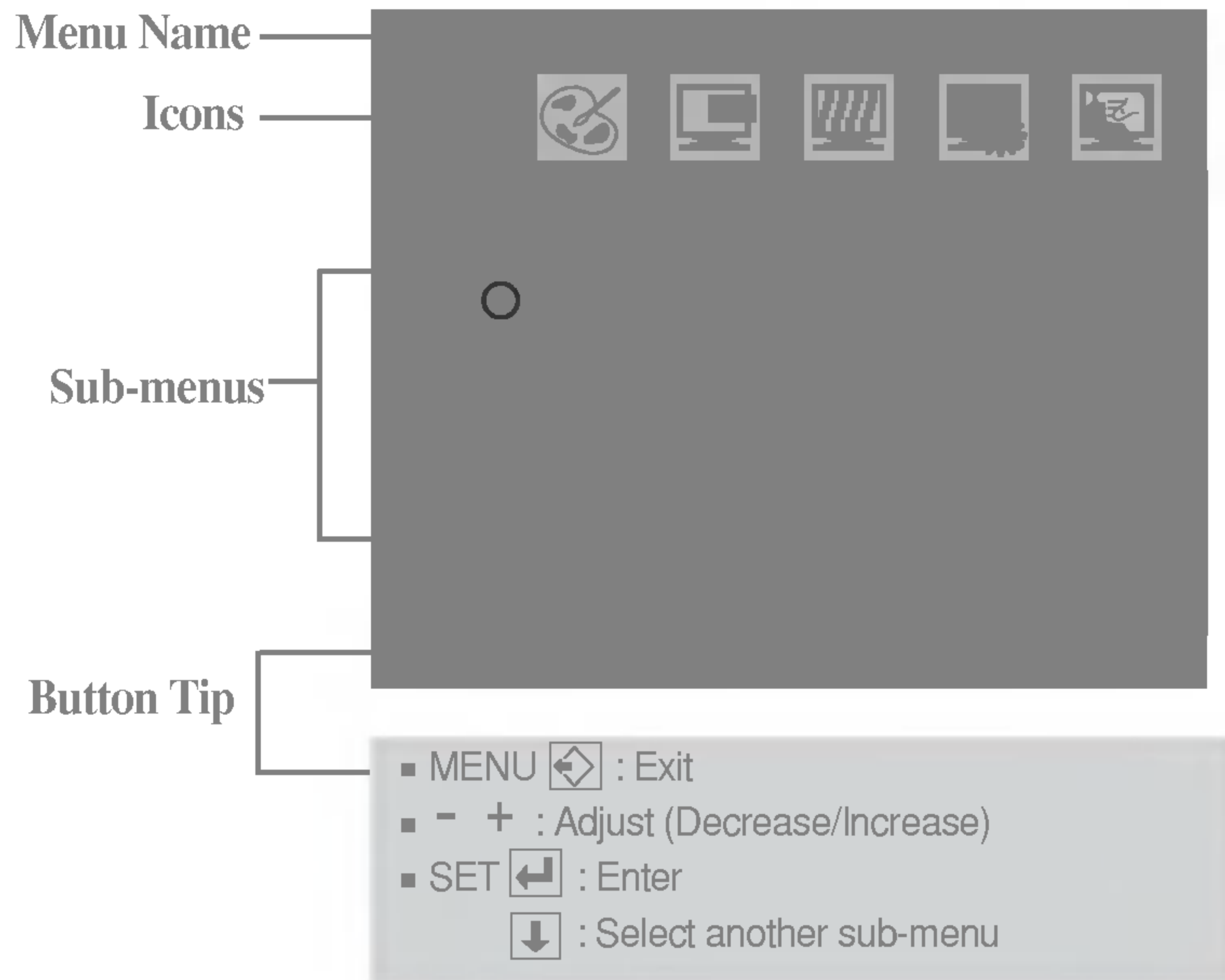
Main menu	Sub menu	A	D	Reference
<b>PICTURE</b>	BRIGHTNESS	●	●	To adjust the brightness, contrast and gamma of the screen
	CONTRAST	●	●	
	GAMMA	●	●	
<b>COLOR</b>	PRESET	●	●	To customize the color of the screen
	RED	●	●	
	GREEN	●	●	
	BLUE	●	●	
<b>POSITION</b>	H POSITION	●		To adjust the position of the screen
	V POSITION	●		
<b>TRACKING</b>	CLOCK	●		To improve the clarity and stability of the screen
	PHASE	●		
<b>FACTORY RESET</b>	FACTORY RESET	●	●	To restore the default settings
	WHITE BALANCE	●		
<b>SETUP</b>	LANGUAGE	●	●	To customize the screen status for a user's operating environment
	OSD H POSITION	●	●	
	OSD V POSITION	●	●	
<b>FLATRON F-ENGINE(-)</b>	TEXT/MOVIE	●	●	To select or customize desired image settings
	USER	●	●	
	NORMAL	●	●	
<p>● : Adjustable  A : Analog Input  D : Digital Input</p>				



# On Screen Display(OSD) Selection and Adjustment

You were introduced to the procedure of selecting and adjusting an item using the OSD system. Listed below are the icons, icon names, and icon descriptions of the all items shown on the Menu.

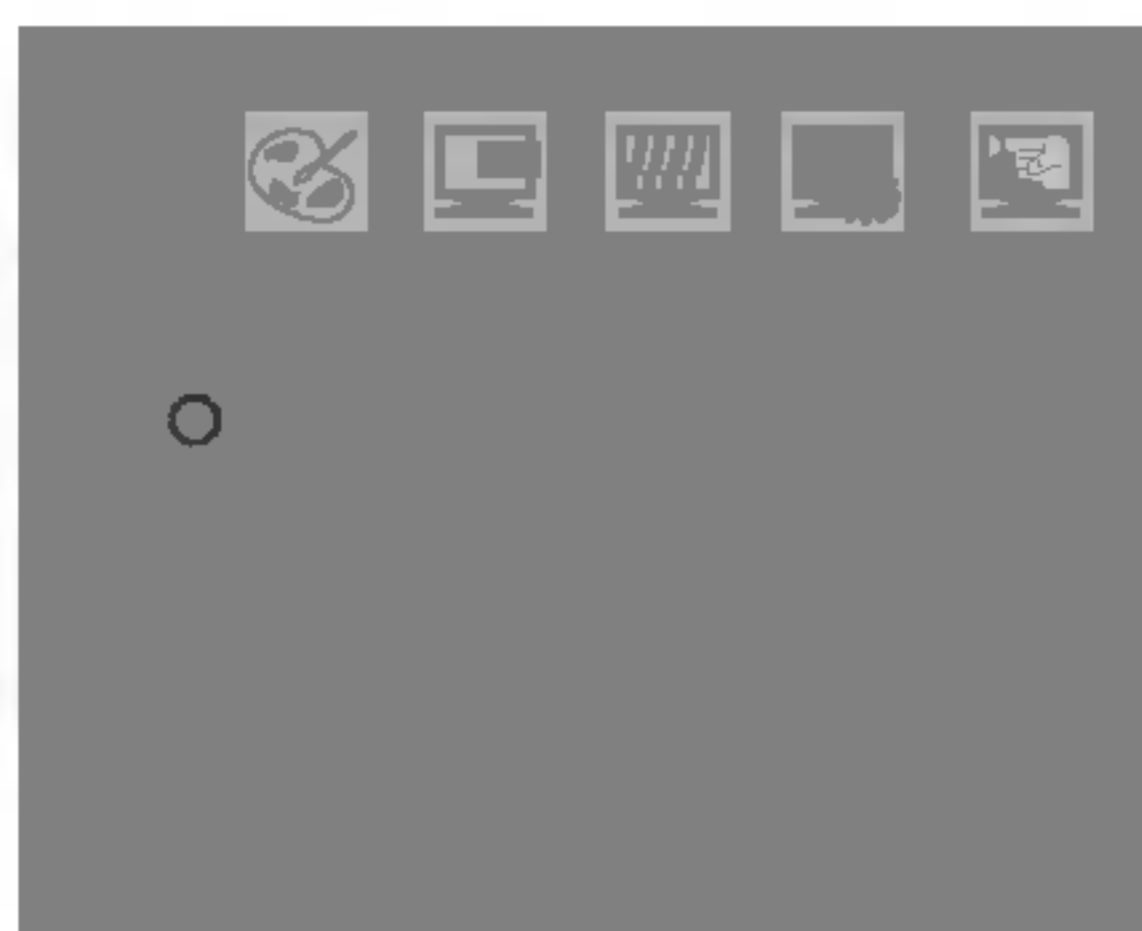
Press the MENU Button, then the main menu of the OSD appears.



## NOTE

- OSD (On Screen Display) menu languages on the monitor may differ from the manual.

## PICTURE



- **MENU** : Exit
- **-** : Decrease
- **+** : Increase
- **SET** : Select another sub-menu

### BRIGHTNESS

To adjust the brightness of the screen.

### CONTRAST

To adjust the contrast of the screen.

### GAMMA

Set your own gamma value. : -50/0/50  
On the monitor, high gamma values display whitish images and low gamma values display high contrast images.

## COLOR



- **MENU** : Exit
- **-** : Decrease
- **+** : Increase
- **SET** : Select another sub-menu

### PRESET

Select the screen color.

- 9300K: Slightly bluish white.
- 6500K: Slightly reddish white.

### RED

Set your own red color levels.

### GREEN

Set your own green color levels.

### BLUE

Set your own blue color levels.

## POSITION



- **MENU** : Exit
- **-** : Decrease
- **+** : Increase
- **SET** : Select another sub-menu

### H POSITION

To move image left and right.

### V POSITION

To move image up and down.

## TRACKING



- **MENU** : Exit
- **-** : Decrease
- **+** : Increase
- **SET** : Select another sub-menu

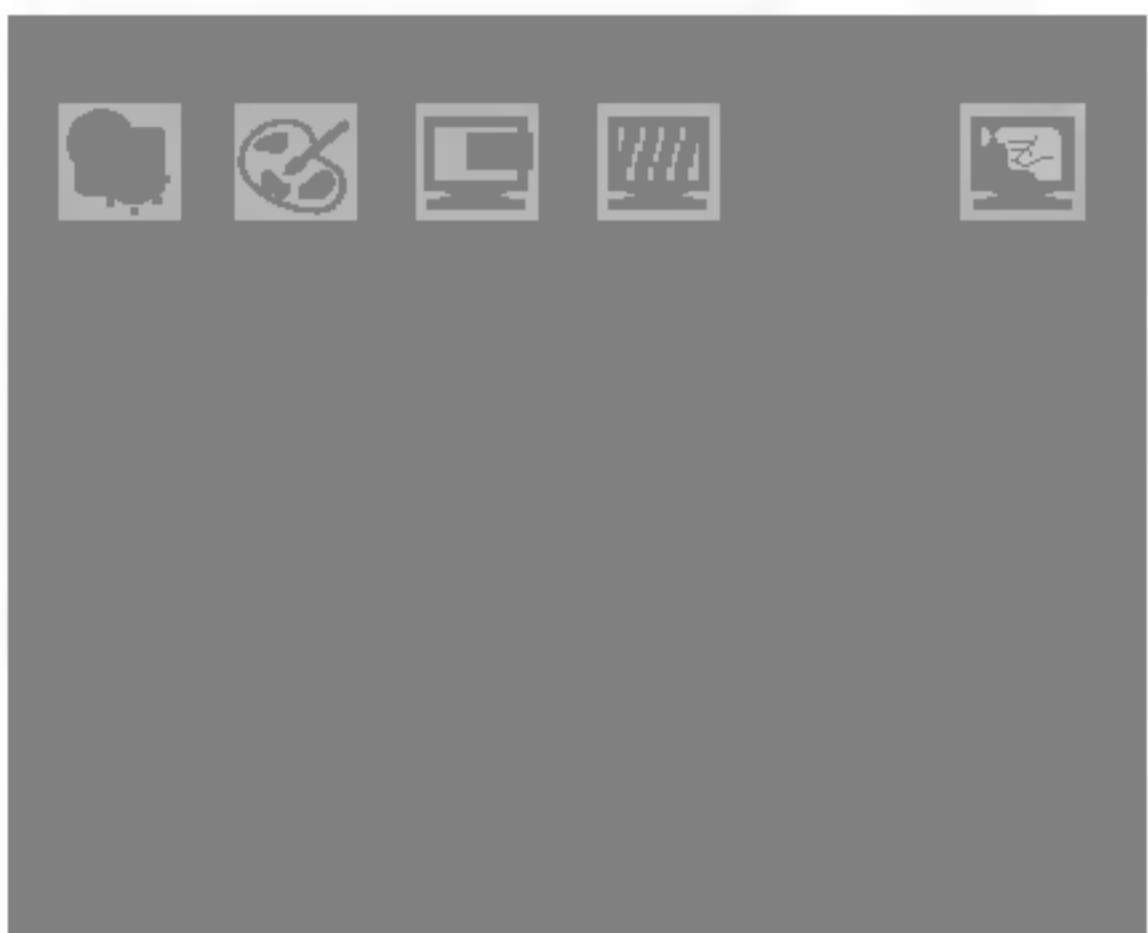
### CLOCK

To minimize any vertical bars or stripes visible on the screen background. The horizontal screen size will also change.

### PHASE

To adjust the focus of the display. This item allows you to remove any horizontal noise and clear or sharpen the image of characters.

## FACTORY RESET



- **MENU** : Exit
- **-** : Adjust
- **+** : Adjust
- **SET** : Select another sub-menu

### FACTORY RESET

Restore all factory default settings except "**LANGUAGE.**"

If you want to reset the monitor, select the **YES** and then press the - or + button to execute.

### WHITE BALANCE

If the output of the video card is different the required specifications, the color level may deteriorate due to video signal distortion. Using this function, the signal level is adjusted to fit into the standard output level of the video card in order to provide the optimal image.

Activate this function when white and black colors are present in the screen.

For example



If this does not improve the screen image, restore the factory default settings. If necessary, perform the white balance function again. This function will be enabled only when the input signal is an analog signal.

If you want to adjust, select the **YES** and then press the - or + button to execute.

## SETUP



- **MENU** : Exit
- **-** : Decrease
- **+** : Increase
- **SET** : Select another sub-menu

### LANGUAGE

To choose the language in which the control names are displayed.

### OSD H POSITION

To adjust horizontal position of the OSD window on the screen.

### OSD V POSITION

To adjust vertical position of the OSD window on the screen.

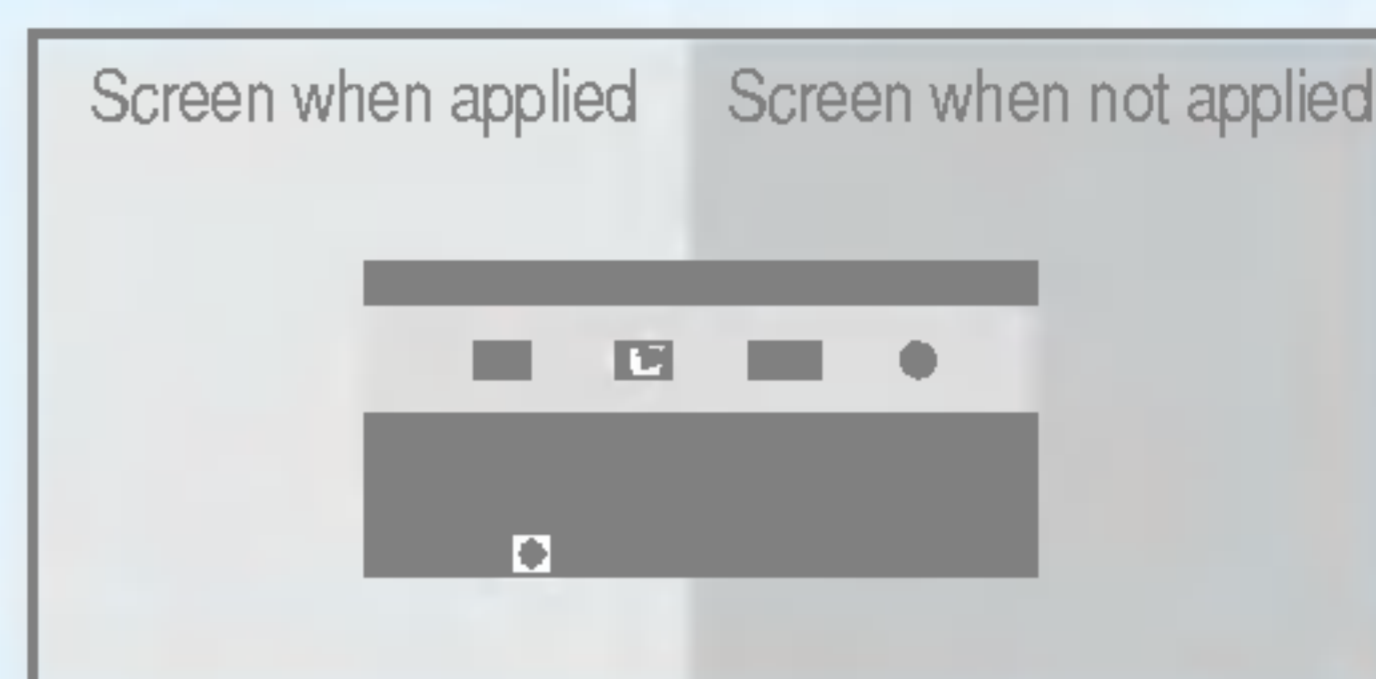
# On Screen Display(OSD) Selection and Adjustment

- The OSD screen will appear when you press the F-ENGINE (-) button at the front side of the monitor.



## FLATRON F-ENGINE

When you execute F-ENGINE, two tones will appear on the screen as shown. The applied screen will appear on the left side, whereas the non-applied screen will appear on the right side. Press the SET button to use the adjusted screen.



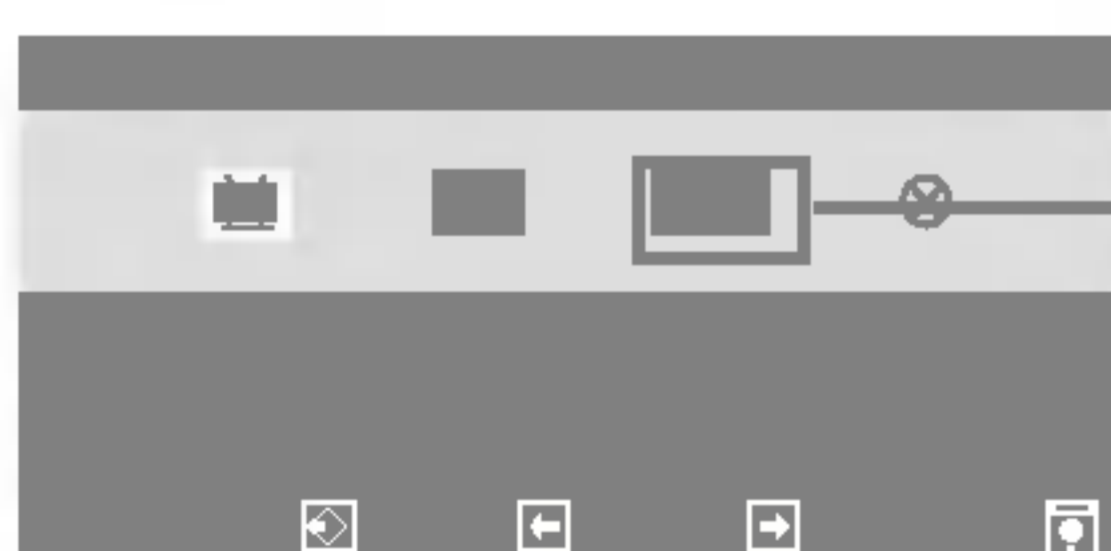
### MOVIE TEXT

This feature lets you easily select the best desired image condition optimized to the environment (ambient illumination, image types etc).

**MOVIE**: For animation images in videos or movies

**TEXT**: For text images (Word processing etc.)

■ - + : Select another sub-menu



### USER

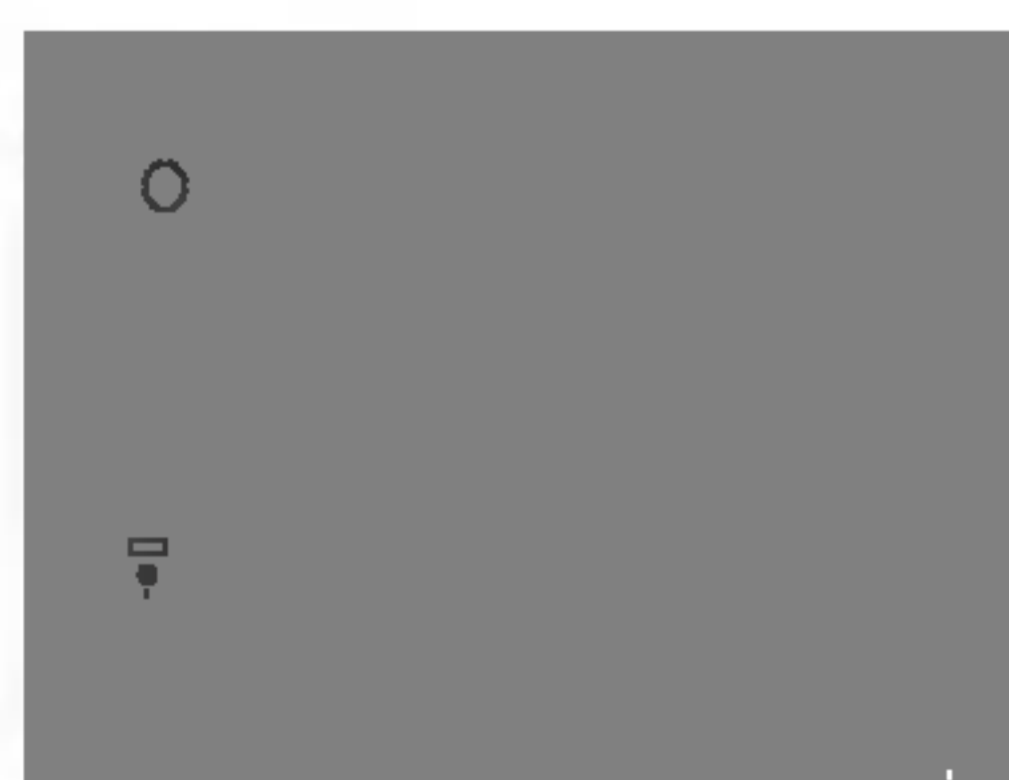
User

You can manually adjust brightness, ACE or RCM. You can save or restore the adjusted value even when using a different environment setting.


- ... ● (Brightness): Adjusts screen brightness.
- ... ● (ACE(Adaptive Clarity Enhancer): Selects the clarity mode.
- ... ● (RCM(Real Color Management): Selects the color mode.



To adjust the **USER** sub-menu function, Press the **SET** Button



- **MENU** : Exit
- - : Decrease
- + : Increase
- **SET** : Select another sub-menu

Select the  sub-menu using the **SET** button and save the **YES** value using the - buttons.



### NORMAL

This is under normal operating conditions.





**Check the following before calling for service.**

<b>Power</b>	
<ul style="list-style-type: none"><li>● <b>Is the power cord of the display connected?</b></li></ul>	<ul style="list-style-type: none"><li>• Check and see if the power cord is connected properly to the power outlet.</li></ul>
<ul style="list-style-type: none"><li>● <b>Is the power indicator light on?</b></li></ul>	<ul style="list-style-type: none"><li>• Press the Power button.</li></ul>
<ul style="list-style-type: none"><li>● <b>Is the power on and the power indicator green?</b></li></ul>	<ul style="list-style-type: none"><li>• Adjust the brightness and the contrast.</li></ul>
<ul style="list-style-type: none"><li>● <b>Is the power indicator amber?</b></li></ul>	<ul style="list-style-type: none"><li>• If the display is in power saving mode, try moving the mouse or pressing any key on the keyboard to bring up the screen.</li><li>• Make sure if the power is on.</li><li>• Try to turn on the PC.</li></ul>
<ul style="list-style-type: none"><li>● <b>Do you see an "OUT OF RANGE" message on the screen?</b></li></ul>	<ul style="list-style-type: none"><li>• This message appears when the signal from the PC (video card) is out of horizontal or vertical frequency range of the display. See the 'Specifications' section of this manual and configure your display again.</li></ul>
<ul style="list-style-type: none"><li>● <b>Do you see a "CHECK SIGNAL CABLE" message on the screen?</b></li></ul>	<ul style="list-style-type: none"><li>• This message appears when the signal cable between your PC and your display is not connected. Check the signal cable and try again.</li></ul>

<b>Display "OSD LOCKED" when you push MENU button?</b>	
<ul style="list-style-type: none"><li>● <b>Do you see "OSD LOCKED" when you push MENU button?</b></li></ul>	<ul style="list-style-type: none"><li>• You can secure the current control settings, so that they cannot be inadvertently changed. You can unlock the OSD controls at any time by pushing the <b>MENU button</b> for 5 seconds. The message <b>"OSD UNLOCKED"</b> should appear.</li></ul>



Display	
<ul style="list-style-type: none"><li>● <b>Display Position is incorrect.</b></li></ul>	<ul style="list-style-type: none"><li>• Press the <b>SET/AUTO</b> button to automatically adjust your display image to the ideal setting. If the results are unsatisfactory, adjust the image position using the <b>H position and V position</b> icon in the on screen display.</li><li>• Check <b>Control Panel --&gt; Display --&gt; Settings</b> and see if the frequency or the resolution were changed. If yes, readjust the video card to the recommend resolution.</li></ul>
<ul style="list-style-type: none"><li>● <b>On the screen background, vertical bars or stripes are visible.</b></li></ul>	<ul style="list-style-type: none"><li>• Press the <b>SET/AUTO</b> button to automatically adjust your display image to the ideal setting. If the results are unsatisfactory, decrease the vertical bars or stripes using the <b>CLOCK</b> icon in the on screen display.</li></ul>
<ul style="list-style-type: none"><li>● <b>Any horizontal noise appearing in any image or characters are not clearly portrayed.</b></li></ul>	<ul style="list-style-type: none"><li>• Press the <b>SET/AUTO</b> button to automatically adjust your display image to the ideal setting. If the results are unsatisfactory, decrease the horizontal bars using the <b>PHASE</b> icon in the on screen display.</li><li>• Check <b>Control Panel --&gt; Display --&gt; Settings</b> and adjust the display to the recommended resolution or adjust the display image to the ideal setting. Set the color setting higher than 24 bits (true color).</li></ul>
<ul style="list-style-type: none"><li>● <b>The screen color is mono or abnormal.</b></li></ul>	<ul style="list-style-type: none"><li>• Check if the signal cable is properly connected and use a screwdriver to fasten if necessary.</li><li>• Make sure the video card is properly inserted in the slot.</li><li>• Set the color setting higher than 24 bits (true color) at <b>Control Panel - Settings</b>.</li></ul>
<ul style="list-style-type: none"><li>● <b>The screen blinks.</b></li></ul>	<ul style="list-style-type: none"><li>• Check if the screen is set to interlace mode and if yes, change it to the recommend resolution.</li><li>• Make sure the power voltage is high enough, It has to be higher than <b>AC100-240V 50/60Hz</b>.</li></ul>



● **Have you installed the display driver?**

- Be sure to install the display driver from the display driver CD (or diskette) that comes with your display. Or, you can also download the driver from our web site: <http://www.lge.com>.

● **Do you see an "Unrecognized monitor, Plug&Play (VESA DDC) monitor found" message?**

- Make sure to check if the video card supports Plug&Play function.



<b>Display</b>	17 inches (43.2cm) Flat Panel Active matrix-TFT LCD	
	Anti-Glare coating	
	17 inches viewable	
	0.26 mm pixel pitch	
<b>Sync Input</b>	<b>Horizontal Freq.</b>	30 - 83kHz (Automatic)
	<b>Vertical Freq.</b>	56 - 75Hz (Automatic)
	<b>Input Form</b>	Separate TTL, Positive/Negative Composite TTL Positive/Negative SOG (Sync On Green) Digital
<b>Video Input</b>	<b>Signal Input</b>	15 pin D-Sub Connector DVI - D connector
	<b>Input Form</b>	RGB Analog (0.7Vp-p/75ohm), Digital
<b>Resolution</b>	<b>Max</b>	VESA 1280 x 1024@75Hz
	<b>Recommend</b>	VESA 1280 x 1024@60Hz
<b>Plug&amp;Play</b>	DDC 2B	
<b>Power</b>	<b>Normal</b>	: 43W
<b>Consumption</b>	<b>Stand-by/Suspend</b>	≤ 2W
	<b>DPMS Off</b>	≤ 2W
<b>Dimensions</b>	<b>Width</b>	39.80 cm / 15.67 inches
	<b>Height</b>	41.84 cm / 16.47 inches (Min) 48.84 cm / 19.23 inches (Max)
	<b>Depth</b>	21.00 cm / 8.27 inches
	<b>Net</b>	6.10 kg (13.45 lbs)
<b>Tilt/Height Range</b>	<b>Tilt / Swivel</b>	-5°~20° / 300°
	<b>Height</b>	2.76 inch (70.0mm)
	<b>Rotate</b>	90° clockwise (Landscape -> Portrait)
	AC 100-240V~ 50/60Hz 1.0A	
	<b>Operating Conditions</b>	
	<b>Temperature</b>	10°C to 35 °C
	<b>Humidity</b>	10 % to 80 % non-Condensing
	<b>Storage Conditions</b>	
	<b>Temperature</b>	-20°C to 60 °C
	<b>Humidity</b>	5 % to 95 % non-Condensing
	Attached( ), Detachable ( O )	
	Attached( ), Detachable ( O )	
	Wall-outlet type or PC-outlet type	



<b>Display</b>	19 inches (48.26cm) Flat Panel Active matrix-TFT LCD	
	Anti-Glare coating	
	19 inches viewable	
	0.294 mm pixel pitch	
<b>Sync Input</b>	<b>Horizontal Freq.</b>	30 - 83kHz (Automatic)
	<b>Vertical Freq.</b>	56 - 75Hz (Automatic)
	<b>Input Form</b>	Separate TTL, Positive/Negative Composite TTL Positive/Negative SOG (Sync On Green) Digital
<b>Video Input</b>	<b>Signal Input</b>	15 pin D-Sub Connector DVI - D connector
	<b>Input Form</b>	RGB Analog (0.7Vp-p/75ohm), Digital
<b>Resolution</b>	<b>Max</b>	VESA 1280 x 1024@75Hz
	<b>Recommend</b>	VESA 1280 x 1024@60Hz
<b>Plug&amp;Play</b>	DDC 2B	
<b>Consumption</b>	<b>Normal</b>	: 45W
	<b>Stand-by/Suspend</b>	≤ 2W
	<b>DPMS Off</b>	≤ 2W
<b>Dimensions</b>	<b>Width</b>	44.44 cm / 17.50 inches
	<b>Height</b>	43.67 cm / 17.21 inches (Min)
<b>(with tilt stand)</b>		50.67cm / 19.95 inches (Max)
	<b>Depth</b>	22.00 cm / 8.66 inches
	<b>Net</b>	7.3kg (16.09 lbs)
<b>Tilt/Height Range</b>	<b>Tilt / Swive</b>	-5° ~ 20° / 300°
	<b>Height</b>	2.76 inch (70.0mm)
	<b>Rotate</b>	90° clockwise (Landscape -> Portrait)
	AC 100-240V~ 50/60Hz 1.0A	
	<b>Operating Conditions</b>	
	<b>Temperature</b>	10°C to 35 °C
	<b>Humidity</b>	10 % to 80 % non-Condensing
	<b>Storage Conditions</b>	
	<b>Temperature</b>	-20°C to 60 °C
	<b>Humidity</b>	5 % to 95 % non-Condensing
	Attached( <input type="checkbox"/> ), Detachable ( <input type="checkbox"/> )	
	Attached( <input type="checkbox"/> ), Detachable ( <input type="checkbox"/> )	
	Wall-outlet type or PC-outlet type	



## Preset Modes (Resolution)

### ● 17,19 inch monitor

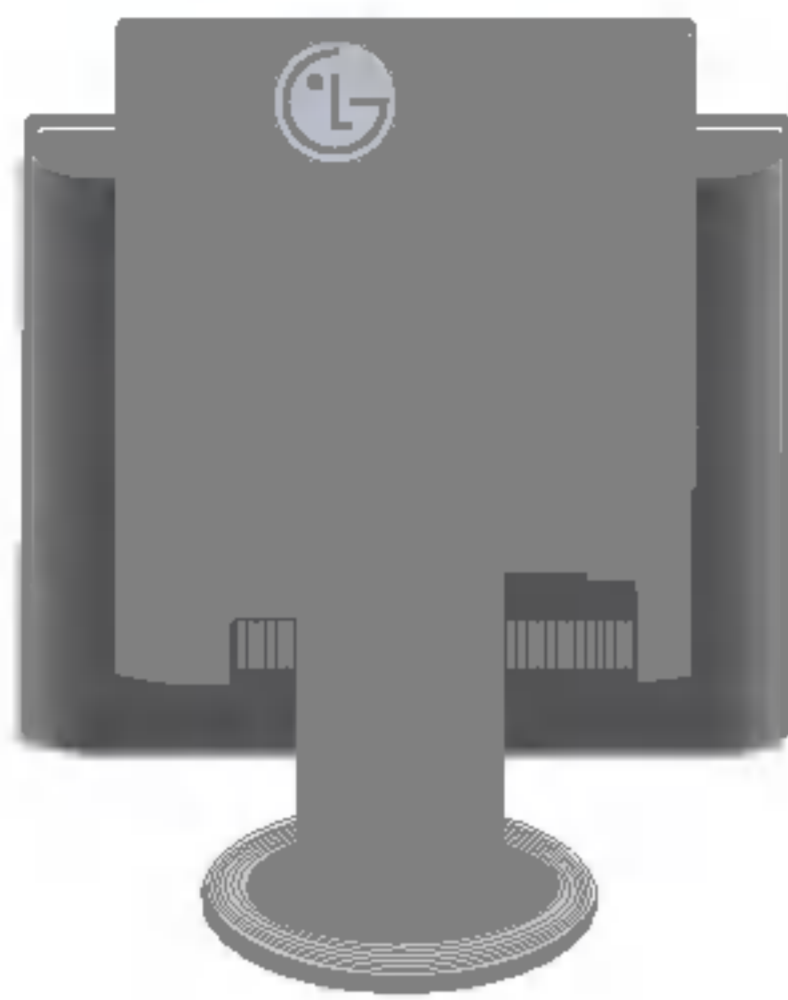
1	VGA	640 x 350	31.469	70
2	VGA	720 x 400	31.468	70
3	VGA	640 x 480	31.469	60
4	VESA	640 x 480	37.500	75
5	VESA	800 x 600	37.879	60
6	VESA	800 x 600	46.875	75
7	MAC	832 x 624	49.725	75
8	VESA	1024 x 768	48.363	60
9	VESA	1024 x 768	60.123	75
10	MAC	1152 x 870	68.681	75
11	VESA	1152 x 900	61.805	65
12	VESA	1280 x 1024	63.981	60
13	VESA	1280 x 1024	79.976	75

## Indicator

Normal	green
Stand-by/Suspend	amber
DPMS Off	amber

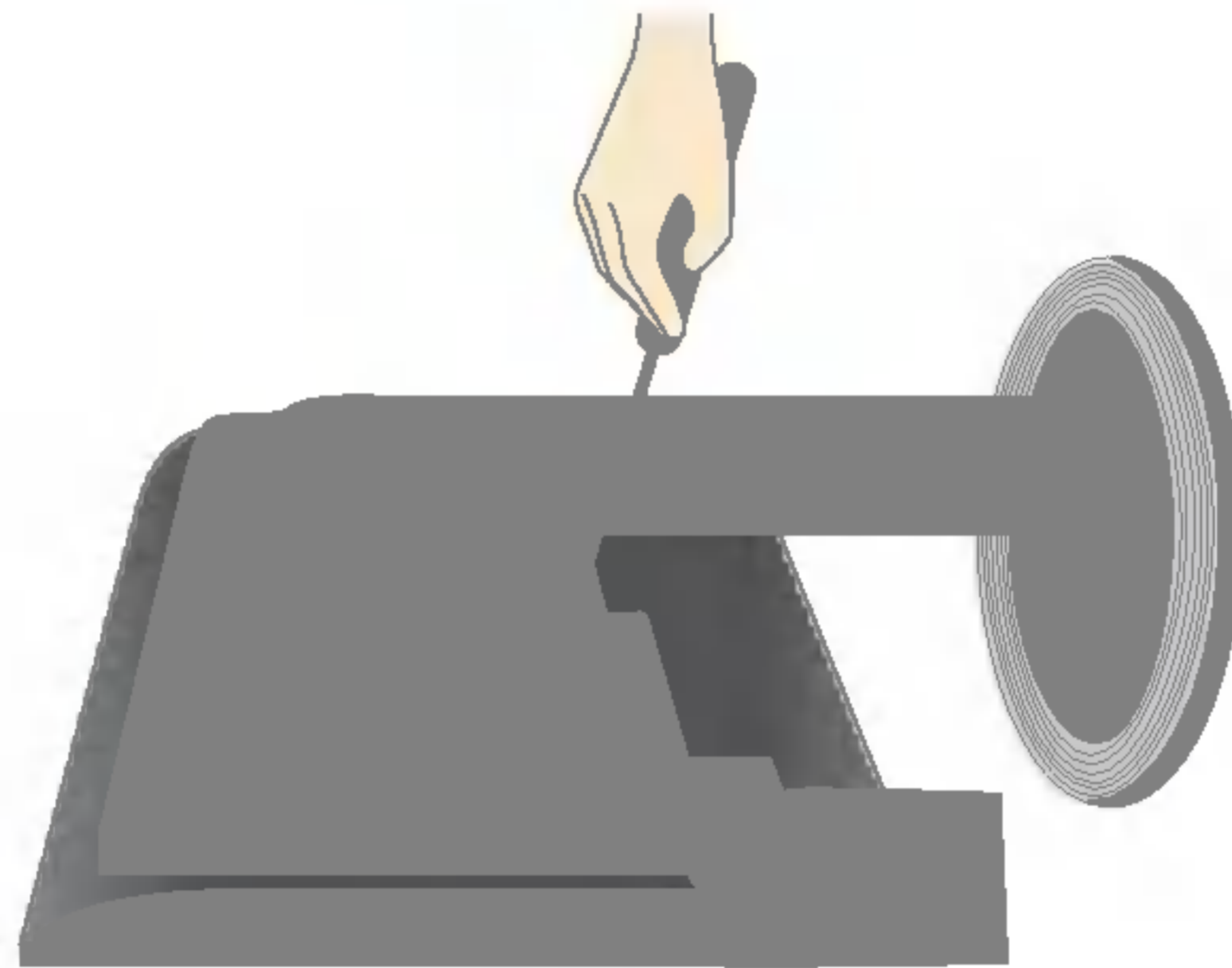
This monitor meets VESA-compliant mounting interface pad specifications.

1. Remove the **Sliding Door**.

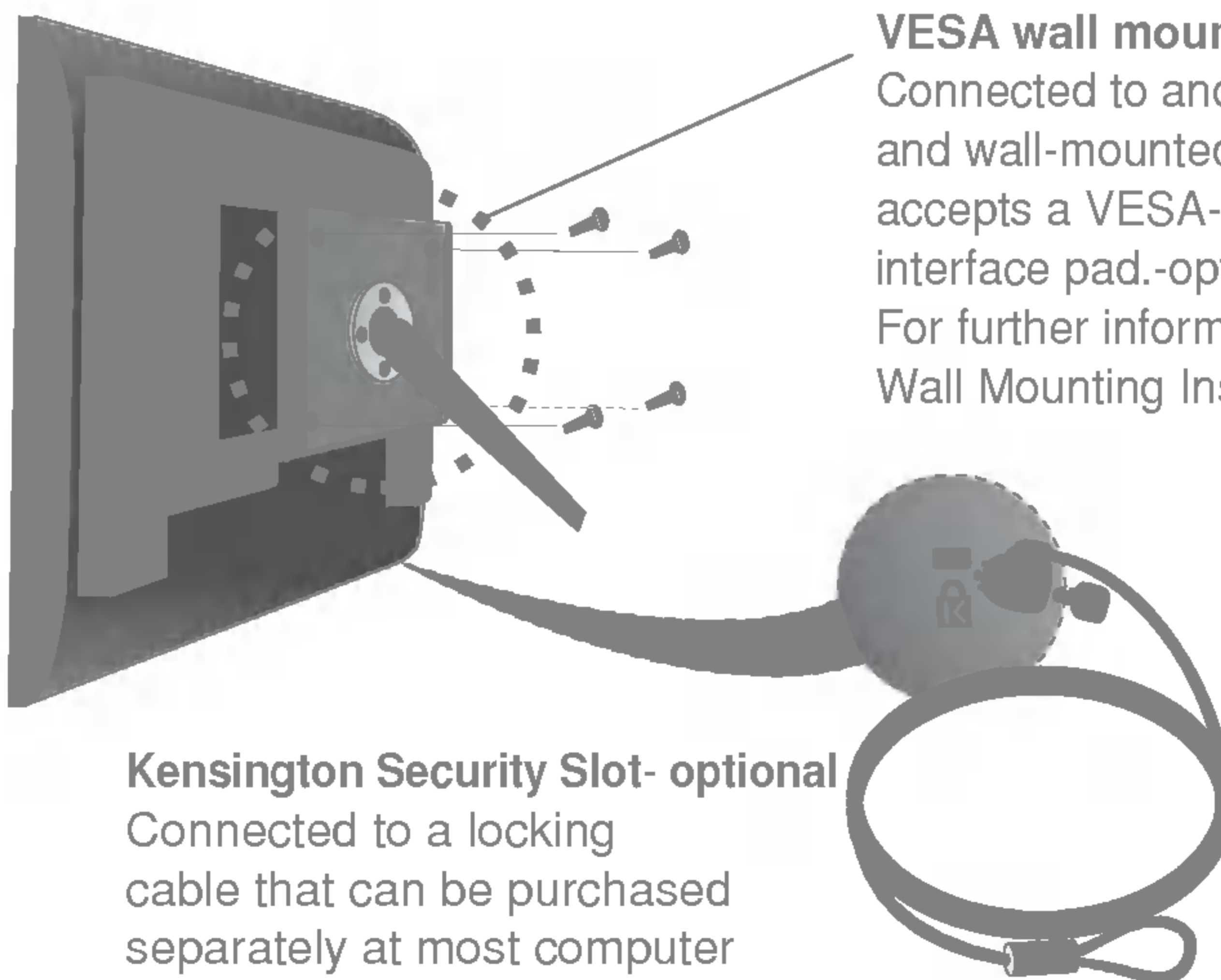


2. Please the monitor on a piece of cloth or other soft surface with the front side facing downward.

3. Separate the stand base using a screwdriver as shown in the picture.



4. Install the VESA standrad wall mounting.



**VESA wall mounting**

Connected to another object (stand type and wall-mounted type. This monitor accepts a VESA-compliant mounting interface pad.-optional)

For further information, refer to the VESA Wall Mounting Instruction Guide.

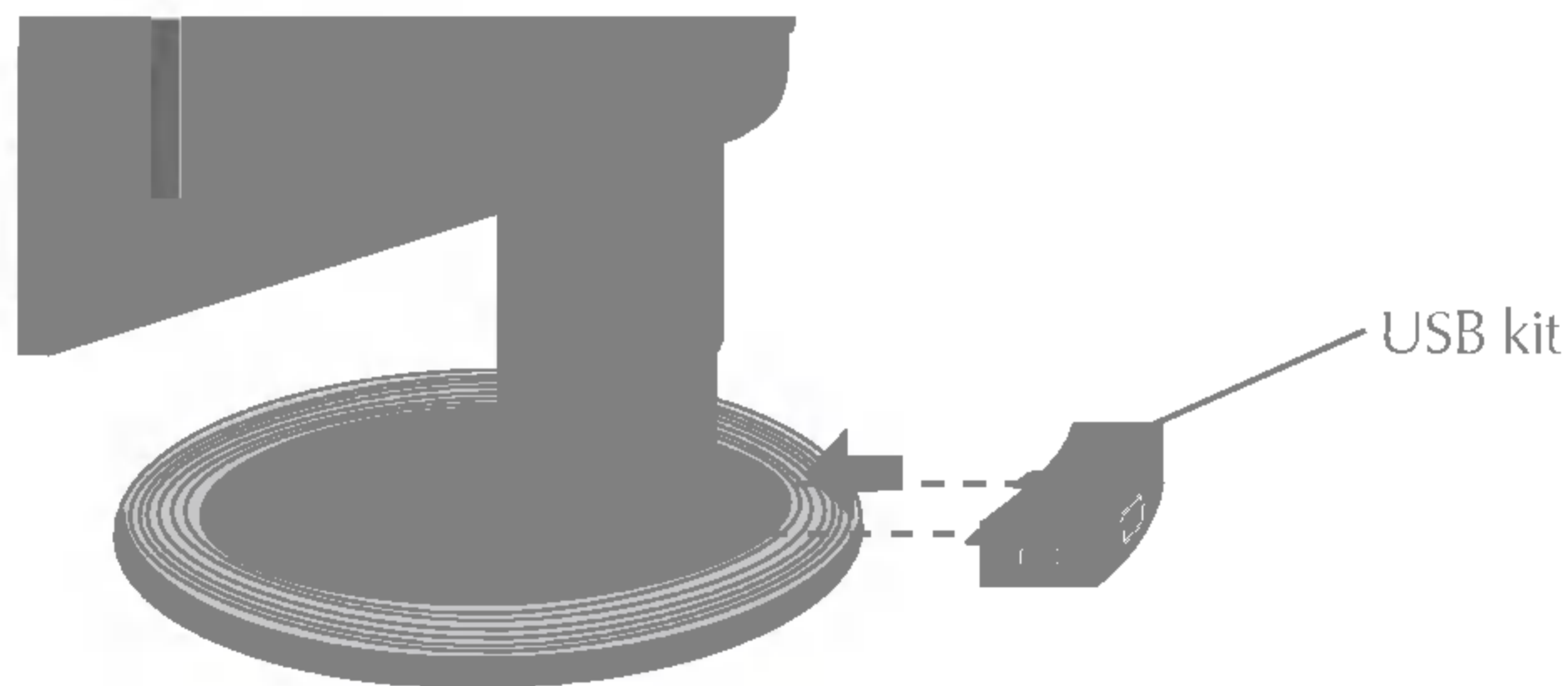
**Kensington Security Slot- optional**

Connected to a locking cable that can be purchased separately at most computer stores

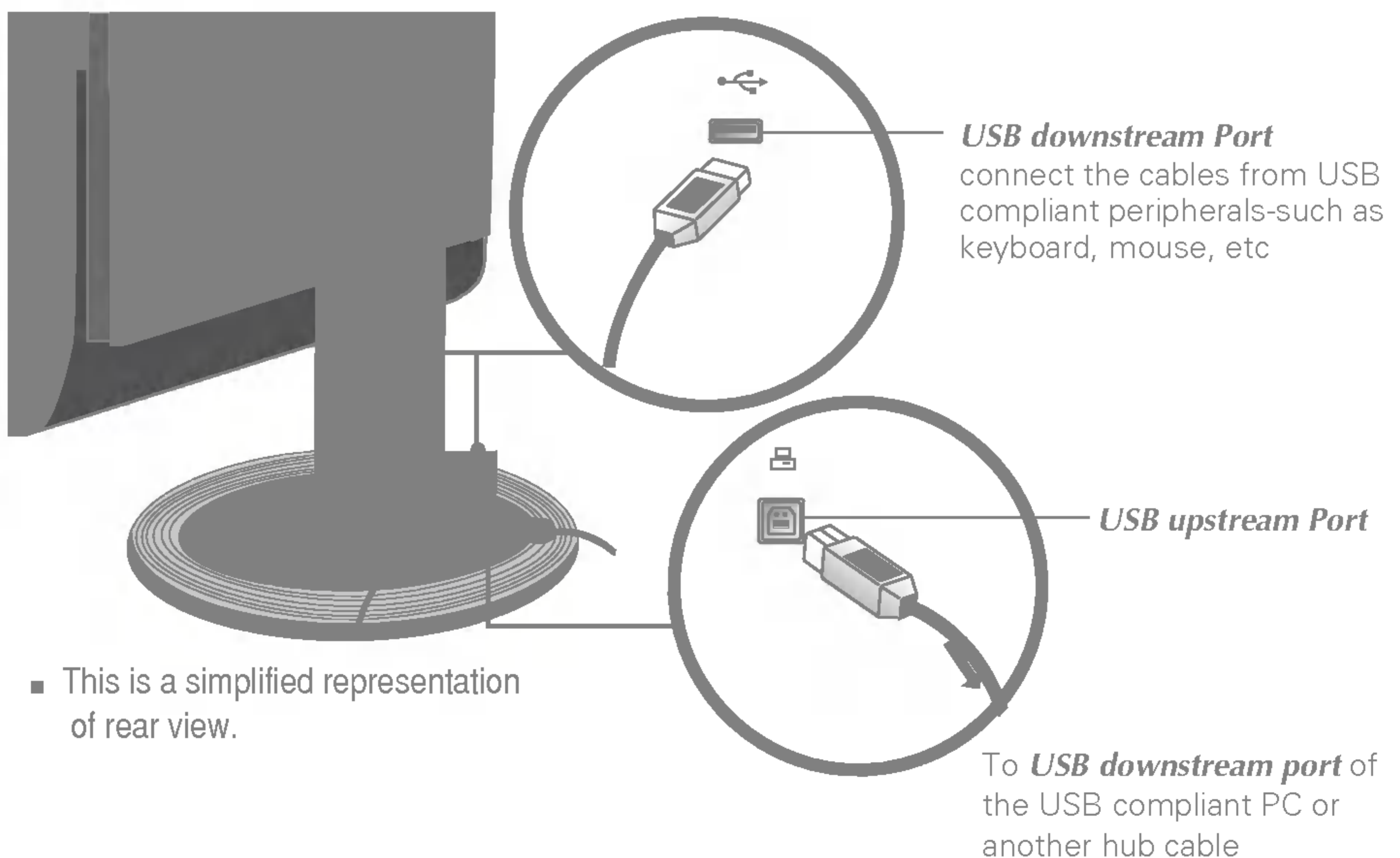
USB (Universal Serial Bus) is an innovation in connecting your different desktop peripherals conveniently to your computer. By using the USB, you will be able to connect your mouse, keyboard, and other peripherals to your display instead of having to connect them to your computer. This will give you greater flexibility in setting up your system. USB allows you to connect a chain of up to 120 devices on a single USB port; and you can “hot” plug (attach them while the computer is running) or unplug them while maintaining the Plug and the Plug auto detection and configuration. This display has an integrated BUS-powered USB hub, allowing up to 2 other USB devices to be attached it.

## USB connection

1. Connect the USB kit, as shown in the figure.



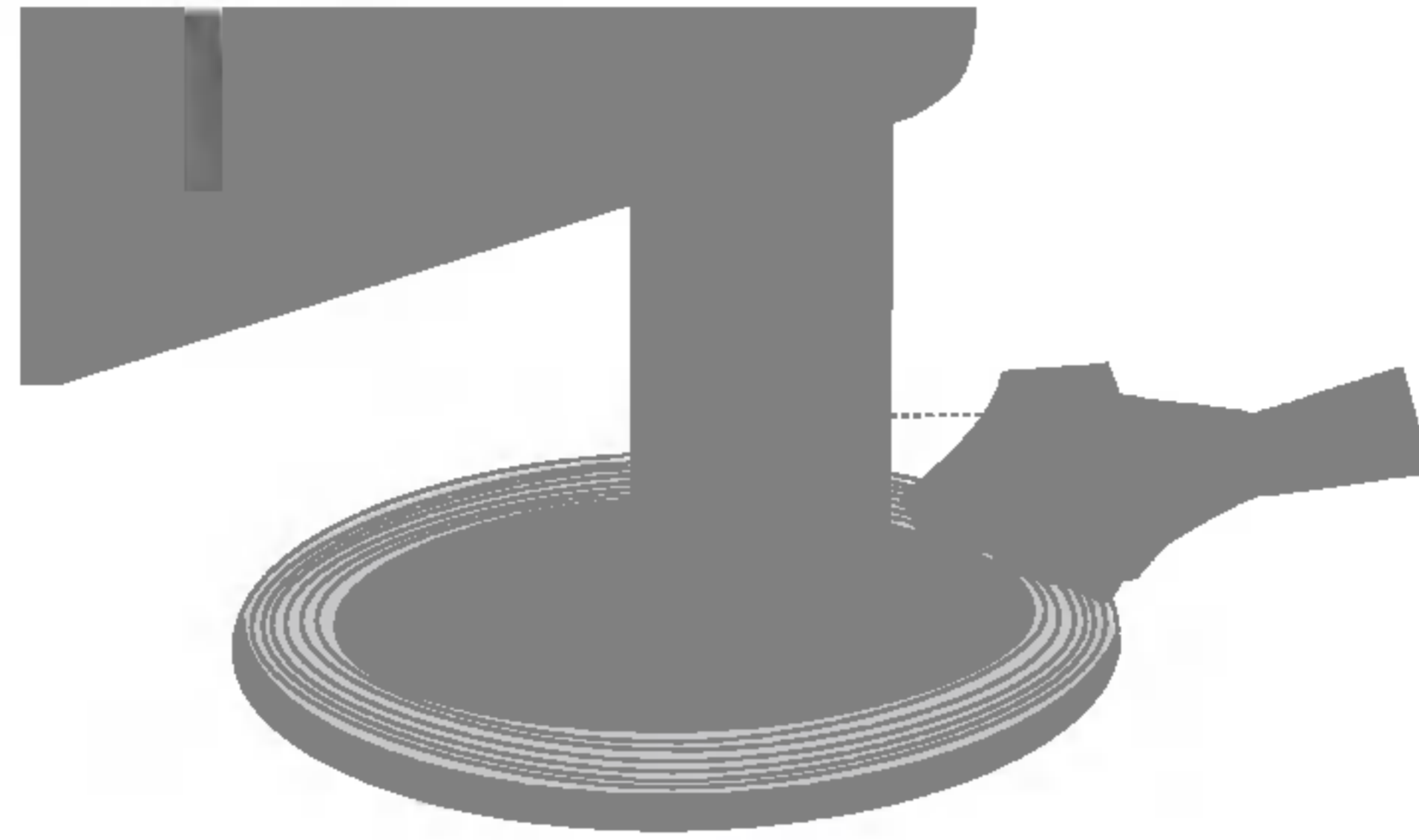
2. Connect the upstream port of the display to the downstream port of the USB compliant PC or another hub using the USB cable. (Computer must have a USB port)
3. Connect the USB compliant peripherals to the downstream ports of the display.





## Removing the USB kit

Pull up the USB kit, as shown in the figure.



### NOTE

- To activate the USB hub function, the display must be connected to a USB compliant PC(OS) or another hub with the USB cable(enclosed).
- When connecting the USB cable, check that the shape of the connector at the cable side matches the shape at the connecting side.
- Even if the display is in a power saving mode, USB compliant devices will function when they are connected the USB ports(both the upstream and downstream) of the display.

## USB Specifications

<b>USB standard</b>	Rev. 1.1 complied BUS-powered hub
<b>Downstream power supply</b>	100mA for each (MAX)
	12 Mbps
	1 Upstream port 2 Downstream ports

**IMPORTANT:** These USB connectors are not designed for use with high-power USB devices such as a video camera, scanner, etc. LGE recommends connecting high-power USB devices directly to the computer



