



User's Guide

Model : LM 40/50, LS 40/50



User's guide	6
Important Safety Instructions	8
Selecting a place to work	8
Using the battery pack	9
Replacing and disposing of the backup (standby) battery	10
Connecting to an AC power source	11
Using the computer	12
Using the computer	13
Upgrading the computer	15
Carrying and storing the computer	16
Preventing data loss (handling hard disk drives)	17
Ergonomic information	18
For Australian Users	19
Laser compliance statement	20
Overview	21
Package contents	21
Components (LM 40/50)	23
Front view	23
Components (LS40/50)	25
Front view	25
Rear view (LM 40/50, LS 40/50)	26
Left view	27
Right view	28
Status indicators	29
Basics	31
Using the battery pack	31

Using the AC adapter	34
Connecting the AC adapter to an AC outlet (100~240V)	34
Opening and positioning the LCD panel	35
Power switch	35
Turning the power on and off	36
Turning on the computer	36
Turning off the computer	40
Using Windows XP	42
Overview.....	42
Help and Support	43
Windows XP desktop	44
Start menu	45
Changing the look of the Start menu	45
Changing the pinned items in the Start menu	45
Showing the recently used items on the Start menu	45
Control Panel	46
Setting up Local Area Network (LAN) connections.....	47
Changing the Themes and Desktop background	49
Using the Windows Classic Theme.....	49
Using a different theme	49
Changing the desktop background	50
Setting the Screen Saver	50
Taskbar.....	51
Desktop cleanup.....	51
Using the Power Options.....	51
Power Options Properties.....	52
Power Options Properties.....	53
Advanced tab.....	54
Power Meter	54
System Hibernation	55
Attaching external devices	56
Attaching a USB device	56
Attaching a television using an S-Video port	56
Attaching an external monitor	58
Attaching a printer.....	59
Using S/PDIF output connector	61

When listening to music as MP3.....	61
When enjoying DVD Player	63
Attaching an IEEE 1394 device	63
Using the IrDA port.....	64
About IrDA port.....	64
Using IrDA port.....	64
Using Wireless LAN	66
Connecting and using the wireless network	66
Using IP Operator	67
Using Battery Miser.....	69
Input/Output.....	71
Using the keyboard.....	71
About the keyboard – 14.1inch.....	71
About the keyboard – 15 inch.....	72
Modifier and special function keys.....	74
Hot keys	76
Using the touch pad.....	77
Moving the pointer on the screen	78
Making the selection (Click)	78
Double-click (Run).....	79
Drag and drop.....	79
Using the scroll up/down function	82
System Setup.....	83
Starting the system setup.....	83
Keys used in the system setup	83
Setting a password	84
Setting a supervisor password.....	85
Setting a user password	86
Changing or removing the password.....	87
Recovering the factory default settings	88
System Recovery.....	89

Using Full Recovery	89
Driver re-installation	93
Storage/Memory.....	94
Using the optical disk drive	94
Inserting a CD	94
Removing a CD	95
Playing an audio CD.....	96
Using Windows Media Player	96
Using Power DVD	97
Using an SD Memory Card / SONY Memory Stick.....	99
Inserting an SD Memory Card / Memory Stick.....	99
Removing the SD Memory Card / Memory Stick	99
Installing memory	100
About memory	100
Before installing memory	100
Purchasing memory	101
Installing memory	101
Features.....	104
Model	104
Processor	104
Memory	104
BIOS ROM	104
Storage devices.....	104
External I/O Interfaces.....	105
Display	105
Sound.....	105
Dimension	105
LAN	105
Modem	105
Power specification.....	106
AC Adaptor (Free Voltage)	106
Battery Pack (Li-Ion).....	106

Charging time	106
Battery Life	106
Backup (standby) battery	106
Operating environment.....	107
Operating	107
Non-operating	107

User's guide

Thank you for using the LG product.

LG has manufactured and tested this product to provide you with a reliable computing environment.

Please read this manual carefully before using the computer.

The following signs call attention to features and operations that may be dangerous to the user. Follow the instruction closely to reduce the risk of physical harm or damage to the equipment.



Danger: Not following the instruction will result in immediate death or serious injury.




Warning: Not following the instruction could result in death or serious injury.



Caution: Not following the instruction could result in minor or moderate injury and/or damage to the product.

Microsoft, MS, WinPE, and Windows are trademarks of Microsoft Corporation in the United States and/or other countries.

“Memory Stick” and  are trademarks of Sony Corporation.



is a trademark of LG.

Copyright 2003 LG Electronics, Inc., DigitalMate Co., Ltd.

Information in this manual may include technical inaccuracies or typographical errors. Images in this manual are for illustrative purposes only and may be different from the actual product.

LG reserves the rights to make improvements and/or changes to the product without notice.

Reproducing any or all of the information contained in this publication without written permission is prohibited.

Your computer complies with the radio frequency and safety standards of any country or region in which it has been approved for wireless use.

Important Safety Instructions



These safety instructions will ensure many years of safe enjoyment from the product. Set up your computer on a flat, stable surface. (LG is not responsible for the problems and damages caused by incorrect use of the computer in an unsafe environment.)

Selecting a place to work



Warning

Do not operate your computer near water; for example, in a bathroom or near a

The computer may not function correctly, and there is the risk of electric shock.

Operate the computer within a temperature range of 50 to 95 degrees F (10 to 35 degrees C) and 20 to 80% of relative humidity.

Safely dispose of the packing materials, such as desiccant and plastic bags.

Children may swallow desiccant or suffocate from plastic bags.



Caution

Keep your computing environment clean and free of dust.

There is a risk of dysfunction to the computer.

Keep your computer away from electromagnetic fields.

Exposure to the electromagnetic field may result in loss of data in the hard disk drive and/or damage to the LCD.

Do not block the fan louvers and leave enough space around the computer for ventilation. The computer may overheat and result in fire or injuries.

Using the battery pack



Warning

Use only a battery pack recommended by LG.
Using a battery pack of a different type may result in explosion.

Keep metallic objects, such as keys and clips, away from the battery pack.
Objects that conduct electricity can short-circuit the battery pack and result in fire and/or injuries.

Keep the battery pack away from heat.
There is a risk of explosion or fire.

Do not short-circuit battery terminals.
There is a risk of explosion.

Do not subject the battery pack to temperatures above 140 degrees F (60 degrees C).
There is a risk of explosion or fire.

Keep the battery pack away from children and/or pet.
There is a risk of injury and damage to the battery pack.

Do not put the battery pack in the water.
There is a risk of fire or damage to the battery pack.

Be cautious when handling the keen part of the battery pack hook.
It may hurt you.

Lock the Notebook locker at the bottom surface.
There is a risk of battery damage.

Replacing and disposing of the backup (standby) battery



Warning

If the backup battery is incorrectly replace, there is danger of explosion.

The lithium battery contains lithium and can explode if it is not properly handled or disposed of.

Replace only with a battery of the same type.

باتری ذخیره (یدکی) را با نوع درست آن عوض کنید.
خطر انفجار وجود دارد.
باتری های ذخیره های (یدکی) استفاده شده را بر اساس دستور العمل داخلی مصرف کنید.
مصرف باتریهای نادرست منجر به انفجار یا آتش سوزی میشود.

غير البطارية البديلة على الطراز المناسب.
و هناك احتمال الانفجار.
تخلص من البطاريات البديلة المستعملة حسب القوانين والانظمة المحلية.
البطاريات المتخلص منها بصورة غير مناسبة قد تؤدي الى انفجار او احتراق.

Connecting to an AC power source



Warning

Do not use loose or damaged power plugs.
There is a risk of electric shock or fire.

Use properly grounded outlet.
Connecting the computer to an outlet without proper grounding may result in electric shock and damages to your computer.

Do not touch or grab the power plug with wet hands.
There is a risk of electric shock.

Hold the plug body when removing the power cord from an outlet.
There is a risk of fire and damages to the computer.

Use your computer at the proper voltage/current level indicated.
Supplying improper levels of voltage/current may result in electric shock, fire, and/or damage to the computer.

If you hear a noise from the power cord or outlet, unplug the power cord immediately, and contact the customer service for help.
There is a risk of fire or electric shock.

Make sure the power plug fits snugly into the electrical outlet.
Loose fit may result in fire.

Do not bend or place a heavy object on top of the power cord. Keep the children and pets from damaging the power cord.
Damaged power cord may result in electric shock or fire.
Keep the power cord and plug clean and free of dust.
There is a risk of fire.

If an object or liquid enters the computer or an adaptor, remove power cord, battery, and any other cables from the computer, and contact the customer service for help. There is a risk of an electric shock, fire, or damage to the computer.

Before cleaning the computer, disconnect the power cord, battery, and any other cables from the computer. There is a risk of electric shock or damage to the computer.

Using the computer



Warning

For cleaning your computer, use mild detergent or computer cleaning products. Be

Using the computer without completely drying it may result in electric shock or fire.

During a lightning storm, disconnect the power cord, telephone line, and LAN cable from the computer.

There is a risk of electric shock or fire.

Do not place water, chemicals, or liquid of any kind on the computer.

Liquid of any kind entering inside the computer may result in an electric shock, fire, or damage to the computer.

Do not connect the modem directly to a multi-line telephone.

There is a risk of fire or damage to the computer.

If you drop your computer, remove the power cord and battery pack, and then contact the customer service for check up.

There is a risk of electric shock or fire.

Do not place a burning candle or cigarette on the computer.

There is a risk of fire.

If you see or smell smoke from the computer or adaptor, turn off the computer, remove the power cord, and then contact the customer service for help.

There is a risk of fire.

The LCD monitor's fluorescent lamp include hydrargyrum.

Avoid direct contact with liquid from the broken LCD. If it spills into eyes or the other parts of your body, wash it out several times with clean water. If you feel something different, contact a doctor or a health administrator immediately.

Using the computer



Caution

Do not place an object, such as a pen or clip, on the keyboard.

If you close the LCD cover with an object on the keyboard, you may damage or break the LCD.

Do not touch or scratch the LCD with sharp objects.

The LCD may be damaged.

Be sure to turn off the computer before closing the LCD cover.

The computer may overheat, and be damaged or deformed.

Do not exert excessive pressure on the LCD.

LCD is made of glass, and an excessive force can break the LCD.

Follow the instructions in the user's guide.

There is a risk of damage to the computer.

Do not place objects into the PC Card slot.

There is the risk of electric shock or injury.

Upon completion of any service or repairs, ask service technician to perform safety checks.

Ignoring safety checks may result in electric shock or fire.

Use the Wireless LAN at least 5m away from a microwave oven or plasma lamp.

When using the Wireless LAN near a plasma lamp, use the channel 11, 12, or 13.
the connection may be unavailable or slow.

Keep the computer away from heat.

The computer may deform and there is the risk of fire.

When attaching an external device, make sure the connector from the device and the port on the computer are of the same type.

There is a risk of damage to the computer.

Do not insert a damaged CD-ROM or floppy disk.

There is a risk of damage to the computer.

Upgrading the computer



Warning

Before disassembling the computer for upgrading purposes, turn off the power and

There is the risk of electric shock or fire. If you need to open the computer cover, contact the customer service for help.

Keep screws and other small parts away from children.

Children may choke on a screw or other small part. If a child swallows a small part, receive a medical care.



Caution

Do not attempt to disassemble or modify the computer without consulting customer service.

There is a risk of electric shock.

Replace only with the parts approved by LG.

There is a risk of fire and damage to the computer.

Consult with the customer service before connecting and using the computer with any non-LG product.

There is a risk of damage to the computer.

Carrying and storing the computer



Caution

Before moving the computer, turn the power off and remove all the cables.
You may trip over the loose cables and fall.

When traveling on an airplane, follow the instruction by flight attendant.
Using the computer on an airplane may result in an airline accident.

Do not travel with LCD monitor open.

Do not expose your computer to the direct sunlight in a closed area such as inside a car.

Prolonged exposure to high temperatures may deform the computer and also result in fire.

Preventing data loss (handling hard disk drives)



Caution

Be cautious when handling the hard disk drive.

The hard disk drive is very delicate to any physical impact. Always make backups for your data. LG is not responsible for the data loss caused by users.

The data on the hard disk or the drive itself may be damaged in the following situations:

1. Exposure to a physical shock during the disassembling or installing process.
2. The computer is reset (rebooted), for example by power outage, while the hard disk drive is operating.
3. Exposure to virus.
4. The computer is turned off during operation.
5. Exposure to a physical shock while the hard disk drive is operating.

To prevent data loss due to hard disk drive damages, always backup your data. LG is not responsible for the loss of data.

Ergonomic information



Warning

Adjust the display position to avoid glare or reflections from a direct ray of light.

The top of the display should be on or below the level of your eyes.

Keep your head and neck in an upright position.

Keep your forearms, wrists, and hands in a horizontal position.

Adjust your chair to keep your arms and hands in a comfortable position.

Using the computer in the same position for a prolonged period of time may cause discomfort to your body.

Take short frequent breaks from working with your computer. No more than 2 hours of computing per day is recommended.

Stretch periodically to reduce muscular discomfort.

Check the volume level

Check if the volume level is too high before using headphones.

Do not use the headphones for a prolonged period of time.

**Warning**

For safety reasons, only connect equipment with a telecommunications compliance label. This includes customer equipment previously labelled or certified.

Laser compliance statement



An optical disk drive (device), such as a CD-ROM, CD-RW, DVD-ROM drive, which can be installed in this unit is a laser product. The driver's classification label is on the surface of the drive as shown below.

CLASS 1 LASER PRODUCT
LASER KLASSE 1
LUOKAN 1 LASERLAITE
APPAREIL A LASER DE CLASSE 1
KLASS 1 LASER APPARAT

The drive is certified by the manufacturer to comply with the requirements of the Department of Health and Human Services 21 Code of Federal Regulations (DHHS 21 CFR) Subchapter J for Class I laser products at the date of manufacture.

In other countries, the drive is certified to conform to the requirements of IEC825 and EN60825 for Class 1 laser products.



DANGER

Do not open the optical disk drive unit: no user adjustments or serviceable parts are inside. Use of controls, adjustments, or the performance of procedures other than those specified might result in hazardous radiation exposure.

Package contents

The following items are included in the package. Match the items on this list with the items in the box. Some items may look different from the pictures.



LM40 14.1 inch Notebook PC



LM50 15 inch Notebook PC



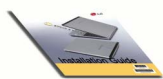
LS40 14.1 inch Notebook PC



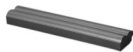
LS50 15 inch Notebook PC

Note:

Make sure you have the correct AC adapter before connecting it to the computer.



Installation guide



Battery pack



power cord / AC adapter



Software installation CD



Telephone cable

Note:

- Battery is consumables, so its capacity and lifetime will decrease gradually as using time goes by.
- Battery pack(9 cell) is optional.
- Below mentioned functions are not offered by each product

***IEEE1394 / Wireless LAN / SD Memory card / S-Video port / IrDA port/
Memory Stick**



Caution

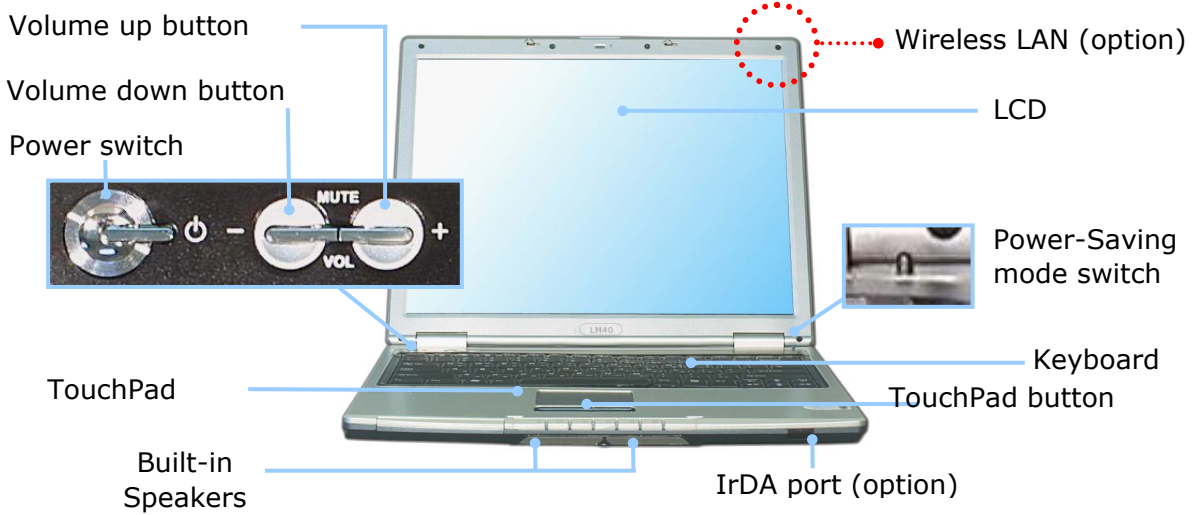
When cleaning your computer, use cleaning products manufactured specifically for computing equipment. Using abrasive chemicals, such as paint thinner, benzene, or alcohol, may damage your computer.

Components (LM 40/50)

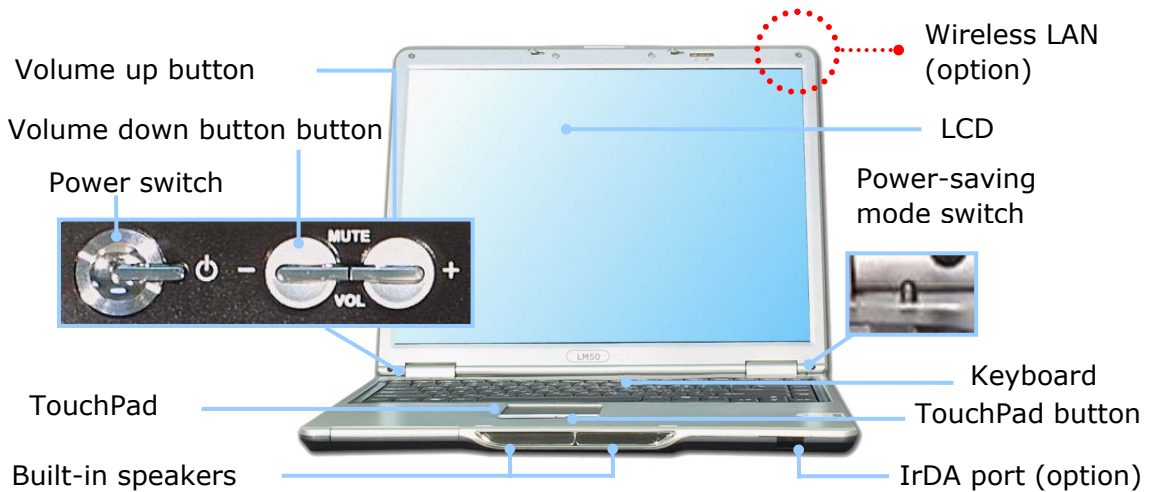
Learning the components and their functions helps you use the computer more easily and thoroughly.

Front view

LM40 14.1 inch



LM50 15 inch



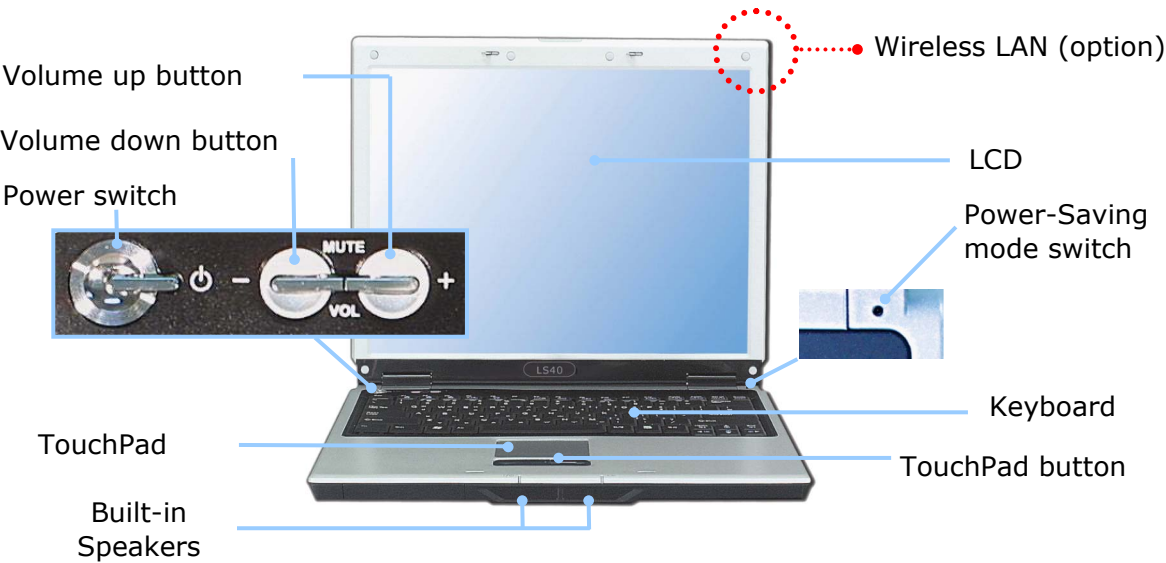
Note:

Pressing the Volume up and down buttons at the same time mutes the sound.

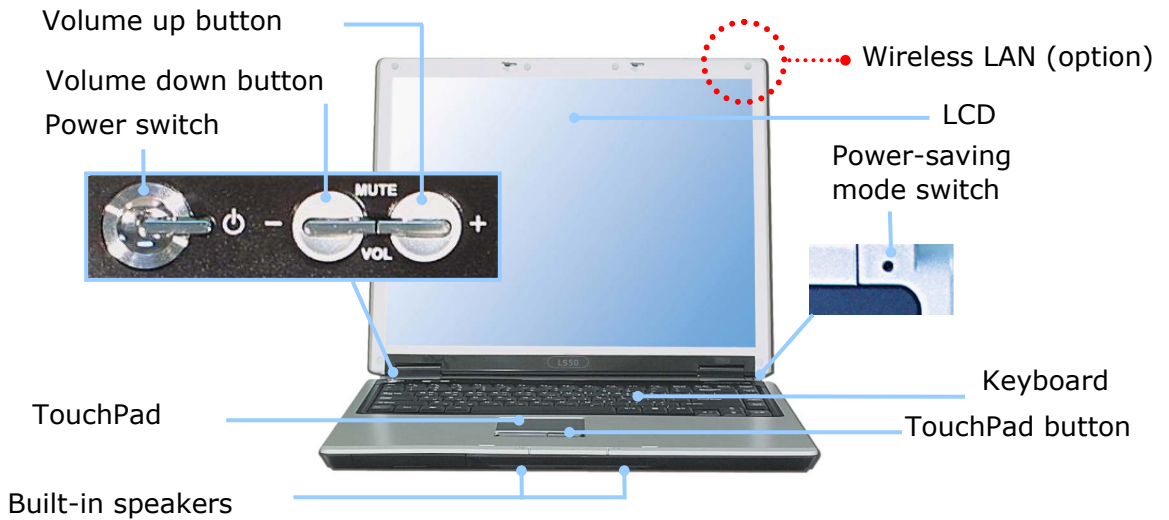
Components (LS40/50)

Front view

LS40 14.1 inch



LS50 15 inch

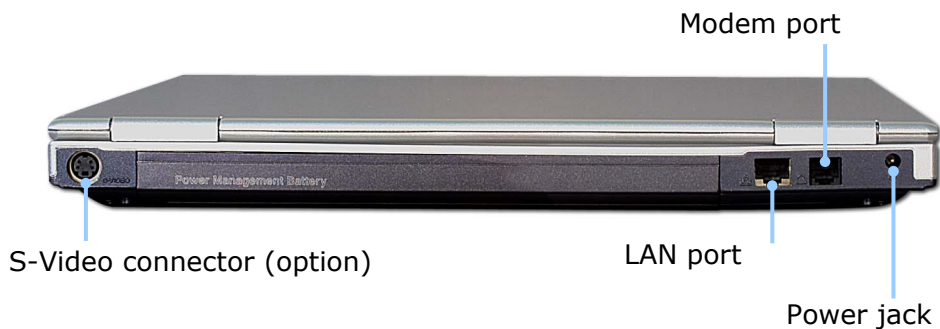


Note:

Pressing the Volume up and down buttons at the same time mutes the sound.

Rear view (LM 40/50, LS 40/50)

Note: Some models may look different from the picture below.



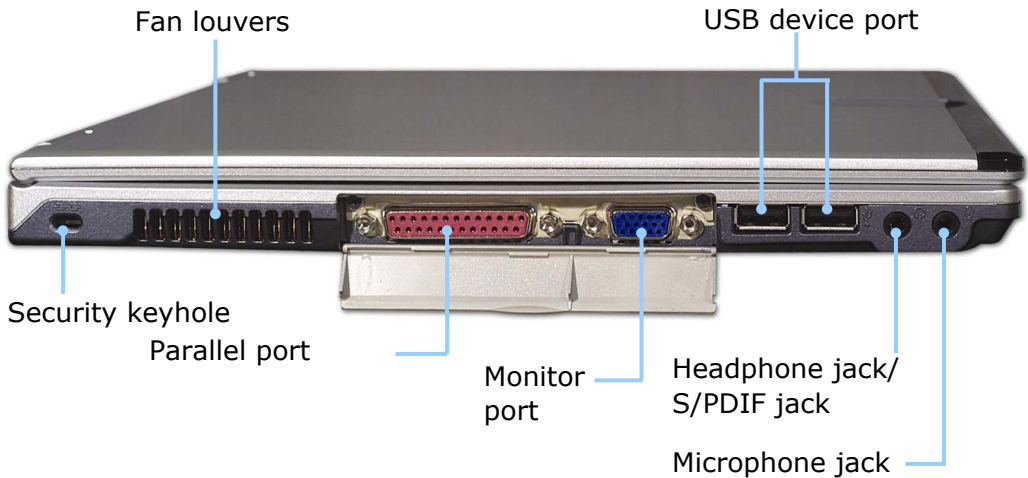
Note:

To open the display panel

1. Push the latch button to the right **1**,
2. and lift the LCD panel **2**.
3. Adjust the slope of the display panel for a comfortable viewing angle.



Left view

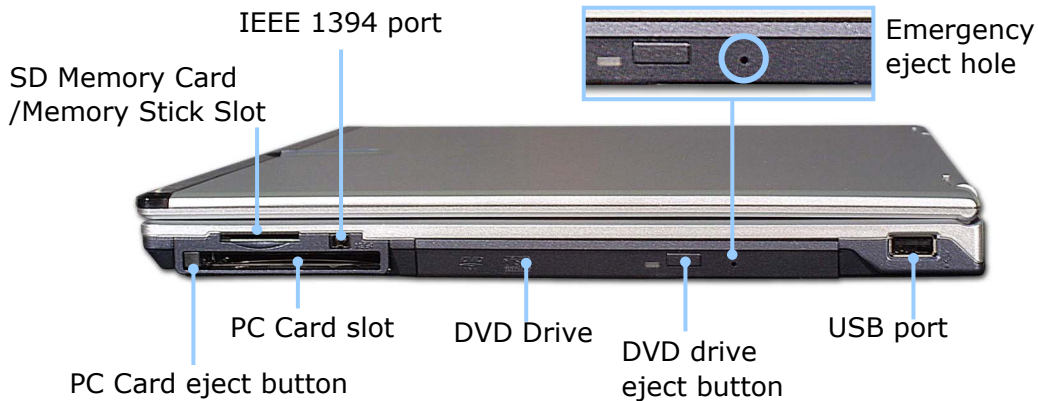


Security keyhole: User can attach a separately purchased chain lock into the security keyhole and connect it to a fixed object to prevent a notebook theft.

Note:

A position of security keyhole can be different from the model type.

Right view



Emergency eject hole: Insert a thin and hard pin into this hole, and you can open the disc tray manually.

Note:

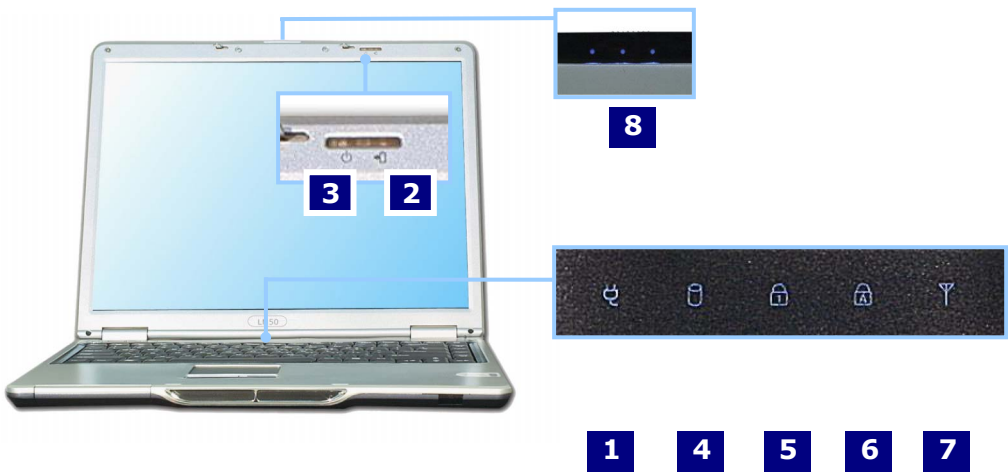
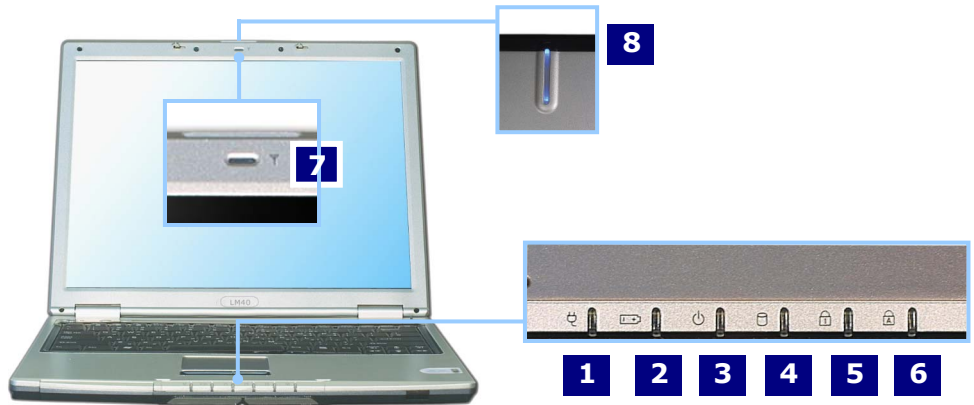
Below mentioned functions are not offered by each product

***IEEE1394 / Wireless LAN / SD Memory card / S-Video port / IrDA port
Memory Stick**

Your computer has a built-in DVD-ROM, CD-ROM, or CD-RW/DVD-ROM combo drive depending on the model type.

Status indicators

Note: Some models may look different from the picture below.



1.AC Power:

Power indicator lights up when the power cord is connected to the computer.

2.Battery:

Battery status indicator indicates the following status of the battery.

Green: The computer is connected to an AC adaptor and is being charged.

Off: The battery is fully charged OR the computer is not connected to an AC Adapter.

Blinking: The battery power is under 10% of its maximum capacity.

3.Power:

Power status indicator indicates the following status of the computer.

Green: The computer is turned on.

Off: The computer is turned off or is in hibernation mode.

Blinking: The computer is in standby mode.

4.Drive in use:

Drive in use indicator lights up when data is being written to or read from the hard disk or optical disk drive.

5.Num lock:

Num lock indicator lights up when the combination of the Fn and Num lock key is pressed. When this indicator lights up, you can use the embedded numeric keys. (To use the numeric keys, you must enable the Internal Keypad setting under the Advanced menu in the BIOS Setup Utility)

6.Caps lock:

Caps lock indicator lights up when the Caps lock key is pressed. When this indicator lights up, you can type capital letters without pressing the Shift key.

7-8. Wireless activity indicator:

Wireless activity indicator indicates the following.

Off: The wireless card does not have the power or RF is off.

Blinking: The wireless client is not associated with the network.Slow blinking (3-4 seconds interval): the wireless card powered on and attempting to connect.

Fast blinking: The wireless card transmitting and/or receiving data by the rate depending on blinking speed.

This section describes how to use the basic features of your computer. Read this section before using the computer.

Using the battery pack

The battery pack must be fully charged before first use.

Note:

Battery is consumables, so its capacity and lifetime will decrease gradually as using time goes by.



Caution

You must turn off the computer before replacing the battery pack.
Use only the battery pack that comes with the computer.

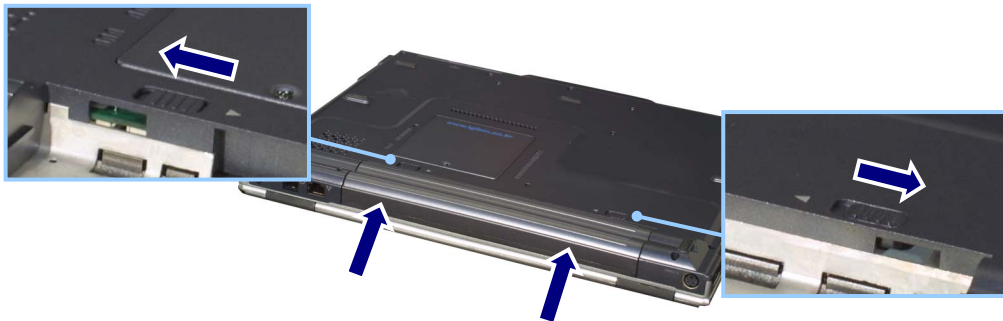
1. Turn the computer over so that the battery slot faces up.



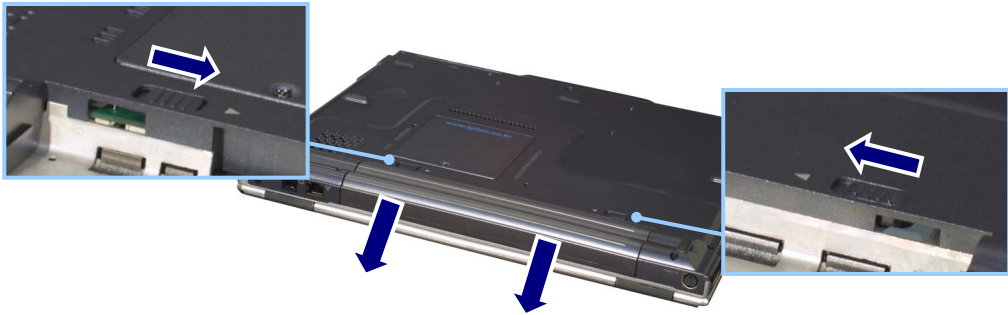
2. Place the battery pack in the battery slot, and align the two protrusions on the battery pack with the two slits on the side of the battery slot.



3. Gently push the battery pack into the slot until it clicks. The battery pack is inserted. You can lock the battery pack in place by pushing the left battery latch in the direction shown above. If you hear a click, the battery pack is locked in.



4. Connect the AC adapter and open the LCD panel. Start charging the battery. (Refer to Page 34 "Using the AC adapter")
5. Check the battery status indicator.
If the battery is fully charged, the indicator is turned off.
6. To remove the battery pack, unlock the left battery latch to the right until it clicks, and push the right battery latch to the left and hold; then slide the battery pack out of the slot.



Caution

When you are not using the computer, remove the battery pack.

Note:

The battery pack has the following characteristics.

Self-discharge: The battery gradually loses its power over time without ever being used.

Periodic full discharge/charge: Frequent recharging of the battery pack can reduce the duration of the battery pack. Periodic performance of full discharge/charge will restore the capacity of the battery pack, in every 30 ~ 60 days. You should use the battery until its power is low; then fully charge the battery.

To use the battery pack safely and effectively,

1. Do not short-circuit the battery pack.
2. Keep the battery pack away from heat or fire.
3. Store the battery pack at room temperature. (32 ~140 °F/0 ~ 60 °C)
4. Do not disassemble the battery pack.
5. Do not expose the battery pack to water.
6. Keep the battery pack away from children.

If the temperature of the battery pack drops below 50 °F (10 °C), the trickle charging begins. The trickle charging may take up to 32 hours for the battery pack to be fully charged.

Using the AC adapter

An AC adapter or battery pack is needed to supply power to your computer. The AC adapter can be used with a 100~240V AC power source. Use only the AC adapter that comes with your computer. Using any other adaptor may cause damage to your computer.

Connecting the AC adapter to an AC outlet (100~240V)

Connect the power cord to the adapter, and then plug the other end into an AC outlet.



Warning

Do not overload an electrical outlet with connections to multiple devices. Overloading an electrical outlet may result in fire or electric shock.

Do not touch the power cord or plug with wet hands. Doing so may result in electric shock.

Connect the power cord to the adapter, and then plug the power cord into an AC outlet.

Opening and positioning the LCD panel

Push the latch button in the direction of the arrow **1**, and open the display panel **2**.
Adjust the slope of the display panel for comfortable viewing.



Power switch

Press the power switch to turn on the computer.



Note:

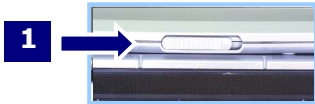
The power switch, volume up/down buttons are coated for preventing static electricity purposes.

Turning the power on and off

Before turning on the computer, make sure the AC adaptor is connected or the battery is charged.

Turning on the computer

1. Push the latch button to the right**1** and open the display panel**2**.



2. Press the power switch.



3. Pressing the power switch starts the self-diagnostic procedures; then Windows(R) XP startup screen is displayed.
4. If you turn the power on the computer for the first time, you have to register your copy of Windows XP. The registration process may differ depending on the model, but the difference does not affect the use of your computer.
5. In a moment, 'Welcome to Microsoft Windows' appears on the screen. Click [Next].



6. 'The End User License Agreement' appears on the screen. Be sure to read the agreement, select 'Yes, I accept', and click [Next].



7. 'What's your computer's name?' appears on the screen. Type the name and description for your computer, and click [Next].



8. 'Ready to register with Microsoft?' appears on the screen. Select 'No, not at this time' and click [Next].



9. 'Who will use this computer?' appears on the screen. Type the names of the users and click [Next].



10. 'Thank you!' appears on the screen. Click [Finish] to complete the registration process.



Turning off the computer

Quit all running applications; click **[Start]** and choose **[Turn Off Computer]** from the start up menu.



In the Turn off computer window, choose Shut down.



The computer is turned off automatically, and pull down the LCD panel until it clicks.



Caution

If the Drive in use indicator is on, do not turn off the computer, as doing so may damage the data being read from or written to the drive.



Warning

If Windows does not shut down correctly, press and hold the power switch for more than 5 seconds; the system will shut down.

Turning off the computer this way may damage the system. It is recommended that you always turn off the computer by choosing Shut down in the Start menu.

If the computer does not shut down correctly while running applications, the data in the hard disk drive may be damaged.

If a program does not respond, press the Ctrl+Alt+Delete combination to start the Task manager; then quit the program or restart the system.

If Windows or program file is damaged by shutting down the system incorrectly, reinstall the program. The user is responsible for the loss of data caused by incorrect use of the computer.

Using Windows XP

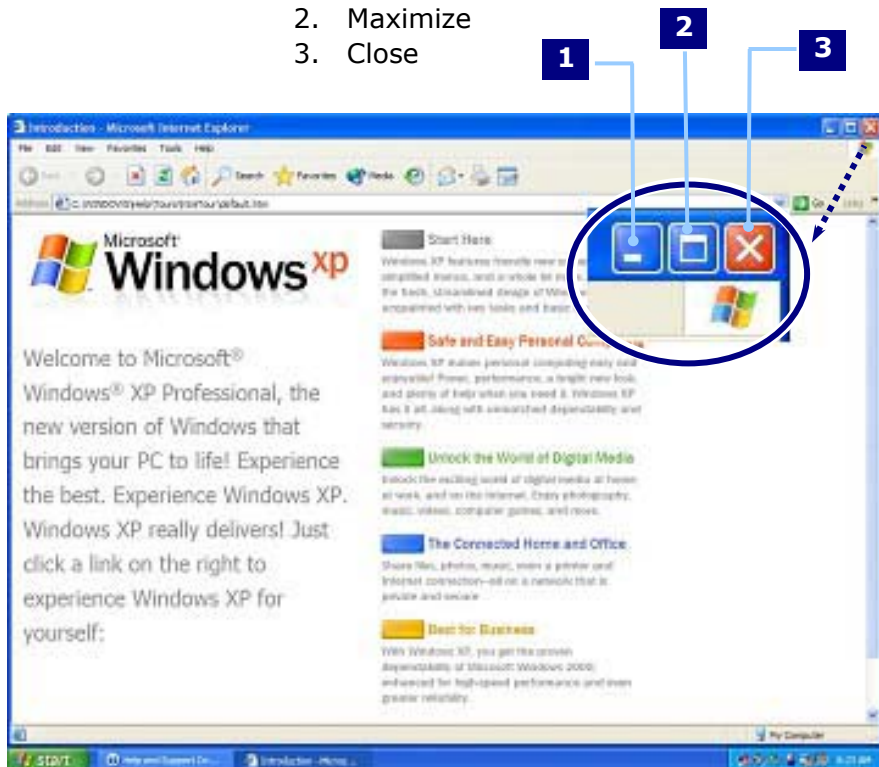
Windows XP is new, brilliant and easy-to-use. Background and title bar have been rearranged concisely, and it became easier to access the application programs from the start menu. Also, it allows the users with more diverse options to choose from when decorating their desktop.

Overview

Windows XP is an operating system that runs a computer. Learning the basics features in Windows is recommended to utilize a computer effectively. Click **[Start]**->**[Tour Windows XP]** to explore the features and tools available in Windows XP.

Window Buttons

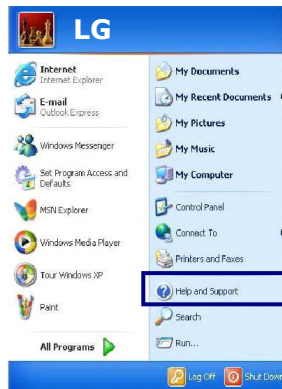
1. Minimize
2. Maximize
3. Close



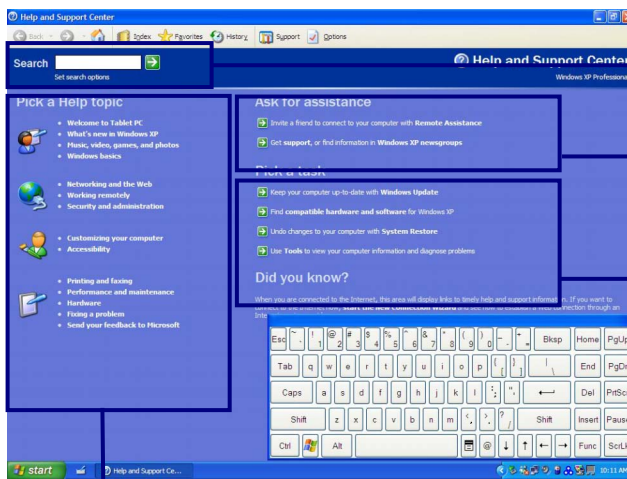
Help and Support

Click **[Help and Support]** to learn how to troubleshoot problems you may encounter while using the computer.

Click [Start]->[Help and Support].



The following window appears.



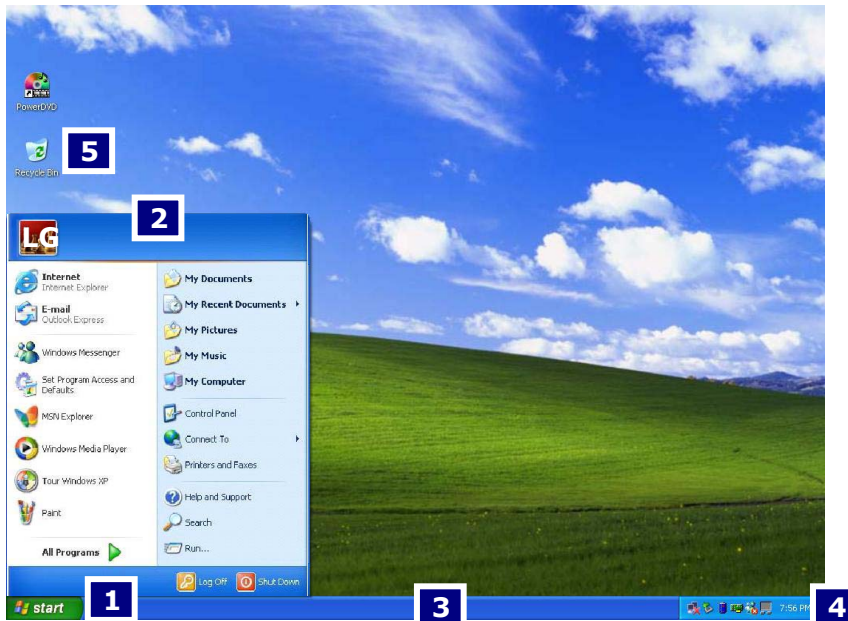
You can search for useful Help and Support information.

You can connect to the Internet and ask for assistance online.

You can setup and configure your computer to personalize your computing environment

Click to learn the features and troubleshooting information

Windows XP desktop



1.[Start] button

Click **[Start]** button to open the **[Start]** menu. Click **[All Programs]** to open the list of programs installed in the computer.

2.[Start] menu

[Start menu] shows everything you need to start working in the Windows XP environment.

3.Taskbar

Taskbar shows programs that are currently open and running.

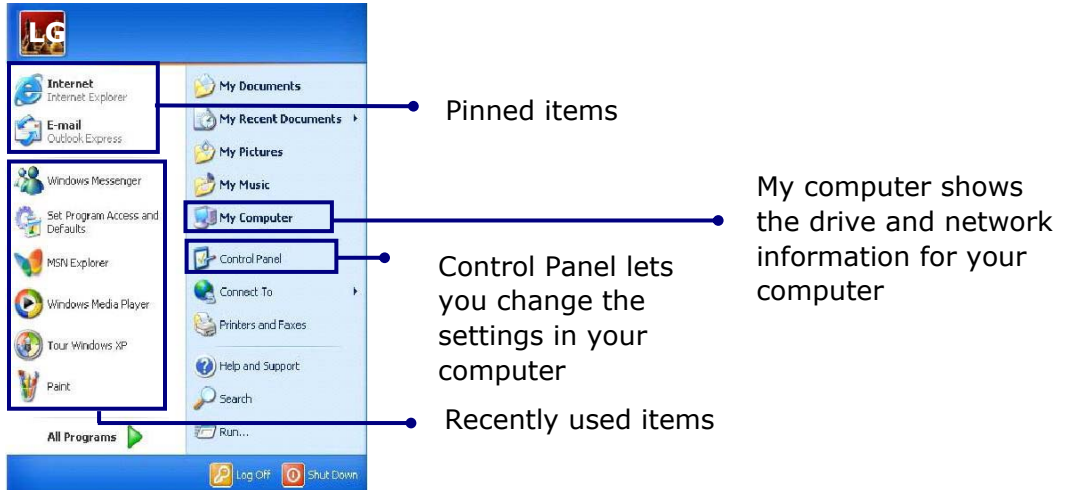
4.Taskbar icons and clock

Taskbar icons show and let you configure ongoing activities such as battery power status, display properties, LAN settings, etc.

5.Recycle Bin

Put your unused items and files in the Recycle Bin. Right-click the Recycle Bin and select **[Empty Recycle Bin]** to permanently delete the items inside the Recycle Bin.

Start menu



Changing the look of the Start menu

Right click **[Start]** button and select **[Properties]**.

In the Start menu tab, choose from either Start menu or Classic Start menu.

Click **[OK]** to apply the new setting.

Changing the pinned items in the Start menu

Right-click the item you want to pin it to the Start menu.

Select **[Pin To Start Menu]**.

The item is pinned at the top of the Start menu.

Showing the recently used items on the Start menu

Right-click on **[Start]** button and click **[Properties]**.

In **[Start Menu]** tab, select **[Start menu]** and click **[Customize]**.

In **[Advanced]** tab, check **[List my most recently opened documents]** and click **[OK]**.

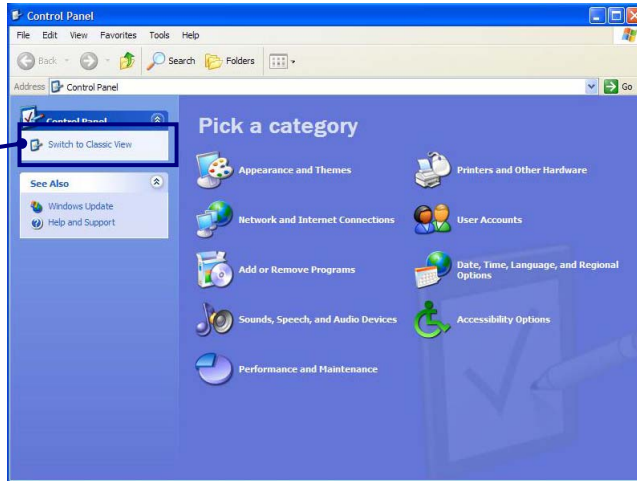
In Taskbar and Start Menu Properties window, click **[Apply]->[OK]**.

If you click **[Start]** button the next time, recently used items appear on the Start Menu.

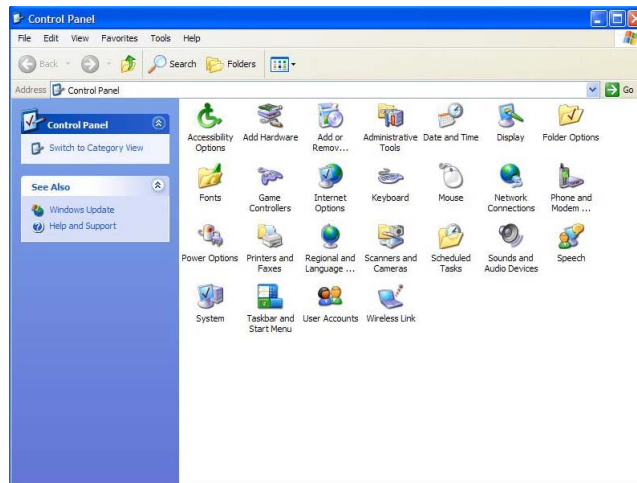
Control Panel

The Windows XP Control Panel can display items in either Category View or Classic View.

Switch to
Classic
View



Category View



Classic View

Setting up Local Area Network (LAN) connections

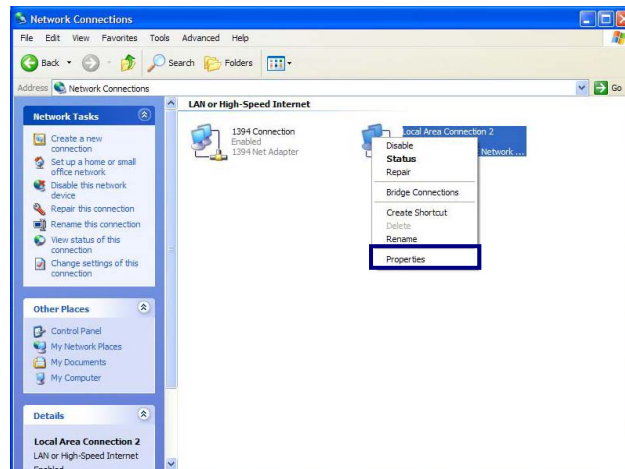
Local Area Network (LAN) connection provides high-speed network connection for your home or company. When using Wireless LAN, refer to "Using Wireless LAN" (page 65).

Attach a LAN cable to the Ethernet (LAN) connector.

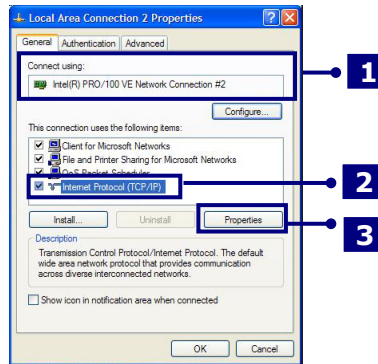
Click **[Start]**->**[Control Panel]**->**[Switch to Classic View]**->**[Network Connections]**.



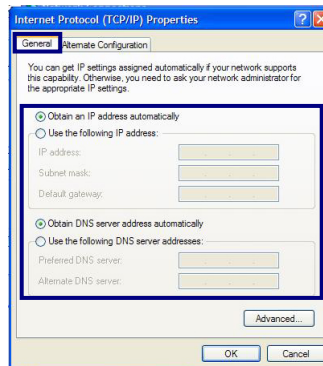
Right-click a Local Area Connection and select **[Properties]**.



If the following window appears, click **[General]** tab and **1.** Check if 3COM 3C920 Integrated Fast Ethernet Controller is installed in the computer **2.** Then, check Internet Protocol, and **3.** Click on **[Properties]**



Click on **[General]** tab, and Select **[Obtain an IP address automatically]**



Click **[Ok]** when Internet protocol (TCP/IP) setting is completed.

Note:

Ask your network administrator for the appropriate IP settings. When using LAN or Wireless LAN, refer to "Using IP Operator" (page 67). IP Operator is useful to access to network everywhere by notebook.

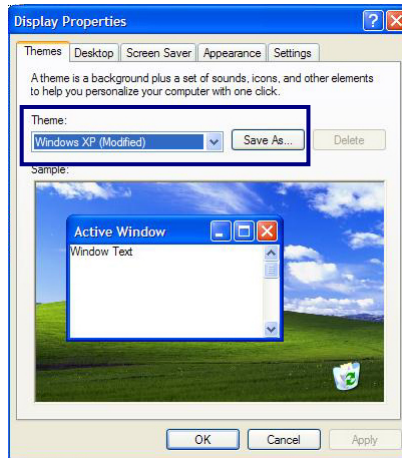
Changing the Themes and Desktop background

Using the Windows Classic Theme

Click **[Start]**->**[Control Panel]**->**[Switch to Classic View]**->**[Display]**.

Click **[Themes]** tab

Select **[Windows Classic]** from the **[Theme]** drop down menu.



Using a different theme

1. Click **[Start]**->**[Control Panel]**->**[Switch to Classic View]**->**[Display]**.
2. Click **[Themes]** tab
3. Select another theme from the **[Theme]** drop down menu.

Note:

In Appearance tab, you can click [Advanced] button and change the color scheme, font size, and windows and button styles.

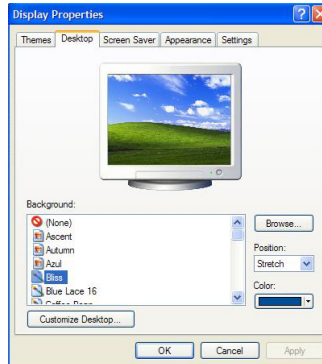
In Themes tab, you can change the overall appearance of the desktop.

If there are more than one user using the computer, each user can apply different theme and desktop appearances.

Changing the desktop background

Click **[Start]**->**[Control Panel]**->**[Switch to Classic View]**->**[Display]**.

Click **[Desktop]** tab. (OR you can right click on the mouse while in desktop background. When a short cut menu pops up, choose **[Properties]**)

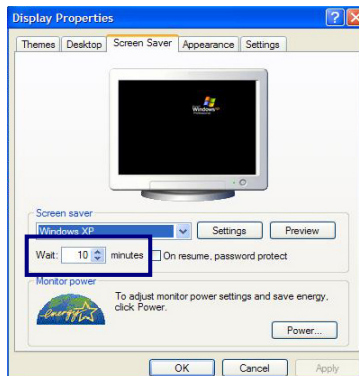


Scroll down the **[Background]** drop down menu and select an image for the background. You can also click **[Browse]** button and select an image you have saved.

Setting the Screen Saver

Click **[Start]**->**[Control Panel]**->**[Switch to Classic View]**->**[Display]**.

Click **[Screen Saver]** tab.

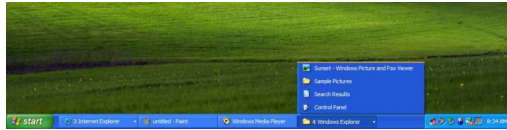


Select the idle time before activating the Screen Saver from **[Wait]** drop down menu. Check **[On resume, password protect]** to protect the computer from

unauthorized users.

Taskbar

Taskbar displays programs and files that are currently open. If there are many programs running on the computer, the Taskbar groups together files from the same program to prevent taskbar icons from cluttering up the Taskbar.



Desktop cleanup

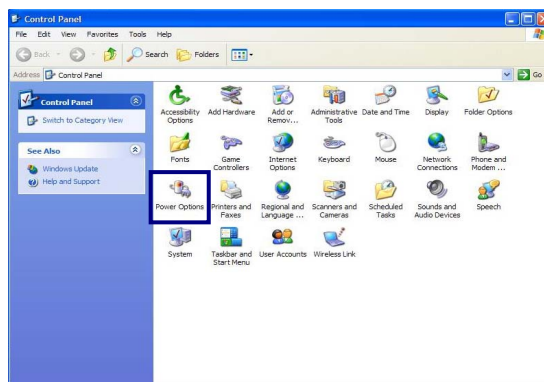
Desktop Cleanup Wizard removes unused desktop items to a folder. The Desktop Cleanup Wizard runs every 60 days but you can also run it manually.

1. Click **[Start]->[Control Panel]->[Switch to Classic view]->[Display]**.
2. Click **[Desktop]** tab.
3. Click **[Customize Desktop] -> [Clean Desktop Now]** button.

Using the Power Options

Windows XP uses its own power-saving program to manage the battery power.

Click **[Start]->[Control Panel]->[Switch to Classic View]**.
Double-click **[Power Options]**.

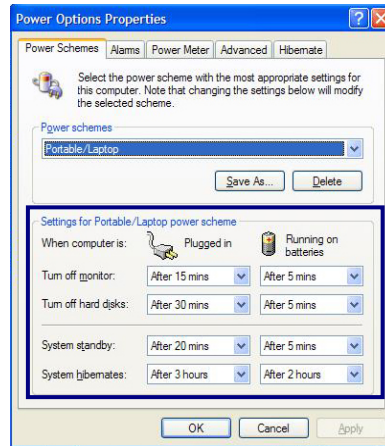


In Power Options Properties window, change the settings best suited for your computing environment.

Power Options Properties

Click **[Power Schemes]** tab.

Drop down the menu and select **[Portable/Laptop]** to set notebook PC with the appropriate power schemes. This includes detailed timeline for **[Turn off monitor]**, **[Turn off hard disks]**, **[System standby]**, and **[System hibernates]**.



Note:

If the computer enters System standby mode, the hard disk is turned off to conserve the battery power.

In System standby mode, you cannot save your work. Be sure to save your work before entering System standby mode.

When the computer enters System hibernation, the computer saves all your work in the hard disk and turns off the computer.

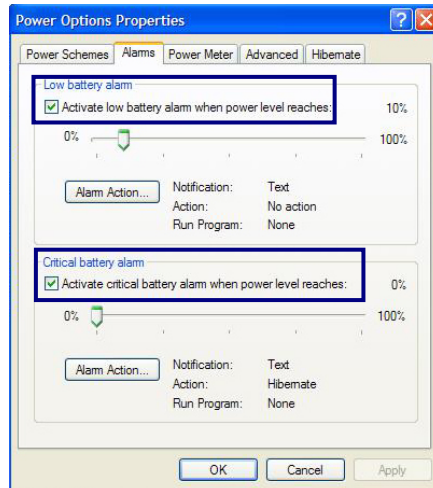


Caution

If the computer enters System standby or hibernation mode while playing a computer game, a serious error may occur. Be sure to quit the computer game before entering a power-saving mode.

Power Options Properties

Click **[Alarms]** tab. Check **[Low battery alarm]** and **[Critical battery alarm]**, and move the sliders to set the power level to activate low battery alarm and critical battery alarm.

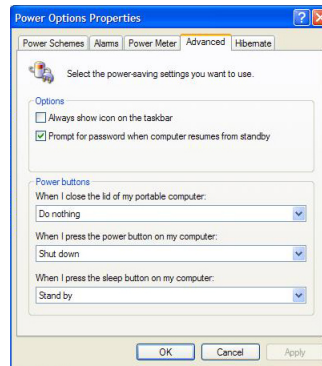


You can be notified with Sound alarm or Display message. You can also set the alarm action such as putting the computer into System standby mode or System hibernation mode. You can also run a specific program when the alarm goes off.



Advanced tab

In Options, you can set the computer to prompt for password when computer resumes from standby. You can also set the computer to enter a power-saving mode when closing the display panel, pressing the power switch or the combination of Fn+F4.



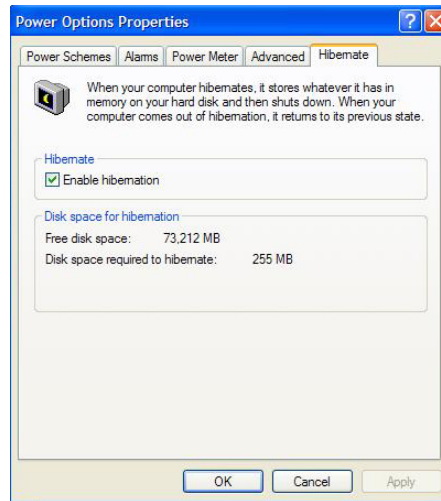
Power Meter

You can click the Power Meter icon on the Taskbar to check the power level of your computer.



System Hibernation

In Hibernate tab, you can enable or disable System hibernation mode and check the disk space needed for hibernation.



Caution

Do not remove the battery pack when the AC adapter is not connected to the computer.

If you keep using the computer while low on the battery power, you may lose the data when the battery power goes out. If you are notified of low battery power, save your data and connect the AC adapter, or turn off the computer and change the battery pack.

Attaching external devices

Attaching a USB device



USB mouse (not included)

You can connect keyboard, hub, digital camera and other devices that support USB.

Attaching a television using an S-Video port

Note:

Below mentioned functions are not offered by each product

***IEEE1394 / Wireless LAN / SD Memory card / S-Video port / IrDA port/
Memory Stick**

1. Attach the S-Video cable from a TV to the S-Video connector on the computer



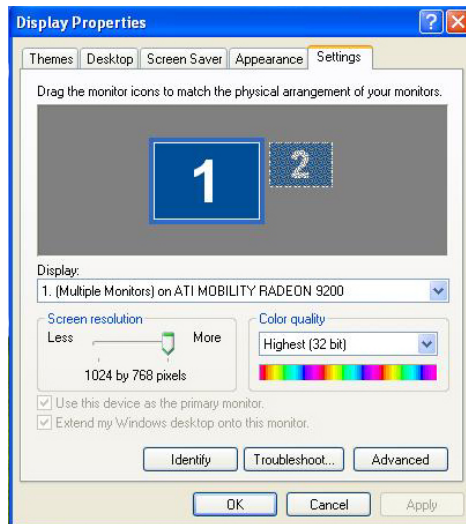
Connecting to system



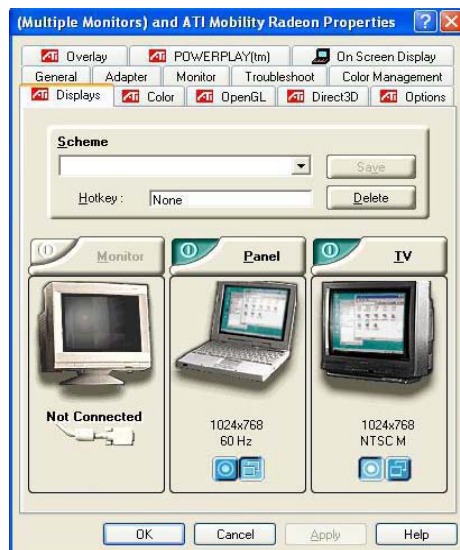
Connecting to TV

(Works only with TV that has S-Video port)

2. Click **[Start]**->**[Control Panel]** -> **[Display]** -> **[Settings]** tab -> **[Advanced]**.



3. In **[Display]**tab, select **TV** as the main display

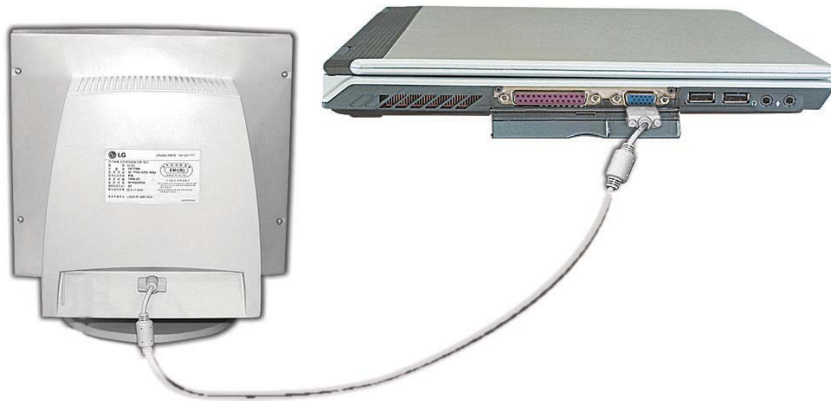


4. You can also switch the main display to and from TV and LCD by pressing the combination of Fn+F7.

Note: You cannot use switch the main display while playing a game. You cannot display a movie or game on a TV and LCD at the same time.

Attaching an external monitor

Note: Turn off the computer before attaching an external monitor. An external VGA connector should be no wider than 17mm otherwise it will not fit in.



External monitor
(not included)

Monitor toggle function (switch the monitor by short-cut keys)
After install the external monitor to the notebook PC, use Fn + F7 to switch the main monitor to LCD only, monitor only, and LCD + monitor both, in sequence.

Attaching a printer

Note: Use a standard parallel port connector that should be 16mm wide. Connectors wider than 17mm will not fit in.

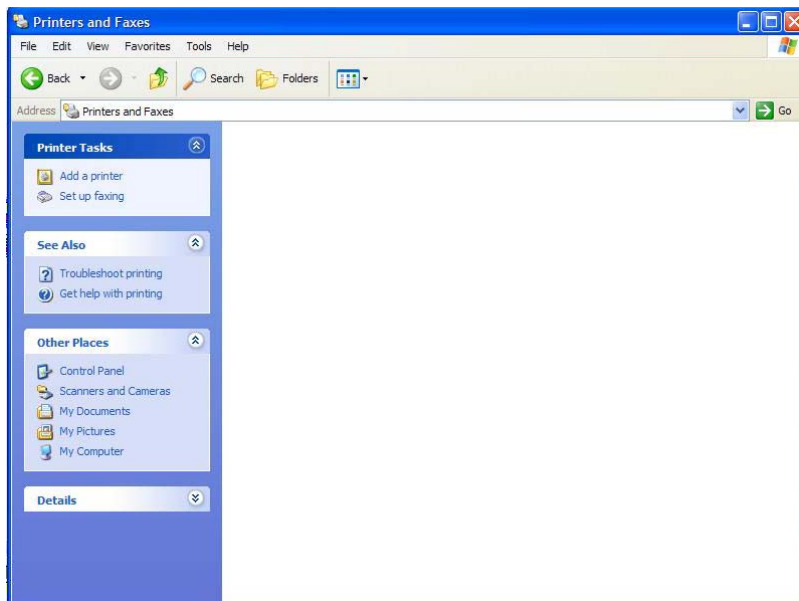


Printer (not included)

Attach a printer cable to the computer, then click [Start] from the Taskbar and [Printers and Faxes].



If the following window appears on the screen, click [Add a printer]



In the Add Printer Wizard, follow the instruction to set up a printer.



When the Add Printer Wizard completes setting up the printer, the new printer appears on the Printers and Faxes window.



Warning

Do not overload an electrical outlet with connections to multiple devices.
Overloading an electrical outlet may result in fire or electric shock.

Do not touch the power cord or plug with wet hands.
Doing so may result in electric shock

Using S/PDIF output connector

Using S/PDIF(Sony/Philips Digital Interface) output connector you can enjoy the digital sound by connecting S/PDIF supporting amplifier to the S/PDIF output connector. You must have the following items (A/V receiver, components of digital amplifier) to enjoy the digital 5.1 channel sound. Digital output of this product is provided by S/PDIF output connector.

For your enjoyment, you must have below mentioned environment.

A DVD title recorded by digital 5.1 channel sound.

A DVD player supported by digital 5.1 channel sound

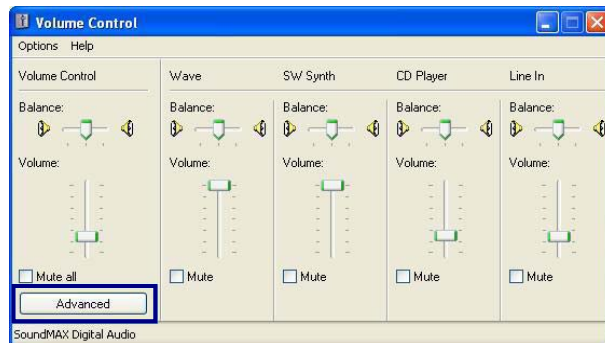
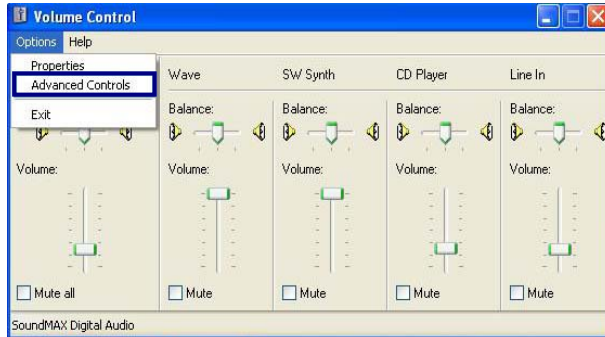
(For example, POWER DVD XP 4.0 or newer)

A/V receiver or digital amplifier to support the digital 5.1 channel sound.

When listening to music as MP3

Double click to open Volume Control from the toolbar.

Go to **[Options]** -> **[Advanced Controls]** -> **[Advanced]**



Check [**Digital output**] checkbox in the volume control.



Enjoy music after connecting A/V receiver, Digital amplifier, MD with cable.

When enjoying DVD Player

Follow the same procedure as above. Set DVD player program setting in compliance with digital output (Refer to **[Help]** on DVD player). Connect A/V receiver, or digital amplifier to S/PDIF by cable. Enjoy DVD 5.1 channel.

Note:

1. Check Digital Output only when using S/PDIF supporting amplifier. When it is checked, you will not hear any sound with regular speakers.
2. Notebook PC doesn't support analogue 5.1 channel amplifier. Use A/V receiver, or 5.1 channel supporting digital input
3. When enjoying 5.1 channel on Power DVD, set up S/PDIF.
4. To support 5.1 channel is not available when S/PDIF doesn't set up on amplifier environment.
5. Check [Digital Output] when you use S/PDIF amplifier.
6. Uncheck Digital Output from the advanced control and restart the program after finishing.

Attaching an IEEE 1394 device



You can connect external hard disk drive, external CD-RW, digital camera, video camcorder and other devices that support IEEE1394.

Note:

Below mentioned functions are not offered by each product

***IEEE1394 / Wireless LAN / SD Memory card / S-Video port / IrDA port
Memory Stick**

Using the IrDA port

Your computer supports IrDA (Infrared Data Association) standard for infrared communication.

About IrDA port

Range: 1m

Beam angle: +-15

Data transmission speed: 4.0 Mbps

Your computer has an IrDA V3.0 Fast Infrared port allowing the data transmission speed of Serial Infrared (115.2Kbps) and Fast Infrared (4Mbps). Transmission speed depends on programs and devices used in IrDA communication.

IrDA communication programs

General serial communication programs can be used, but programs specifically designed for IrDA communication is recommended.

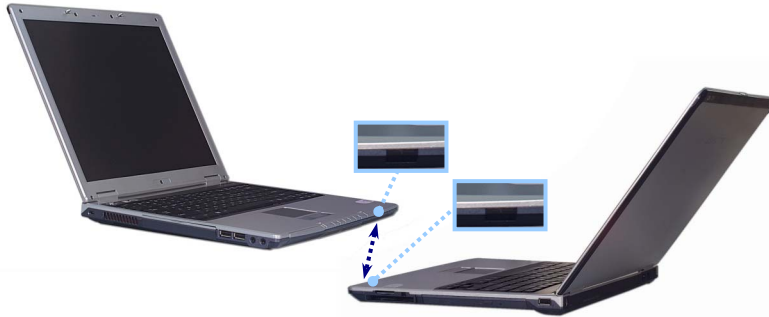
Your computer is configured to use COM port for IrDA communication in FIR mode.

Using IrDA port

Your computer can communicate with another IrDA standard compatible device supporting FIR data communication. IrDA communication provides useful wireless communication between your computer and other computer or devices. The following section describes how to establish IrDA communication between 2 computers.

Make sure Wireless Link program is installed in your computer.

1. Turn on the computer.
2. Click Start button and right-click My computer to select Properties.
3. On Hardware tab, click Device Manager.
4. Right-click IrDA Fast Infrared Port and select Properties.
5. Click Advanced tab, and configure the device.
6. Align 2 computers so that their IrDA ports point to each other.



The distance and the beam angle between the ports must be less than 1m and smaller than ± 15 degrees respectively.
Remove any obstruction between the ports.

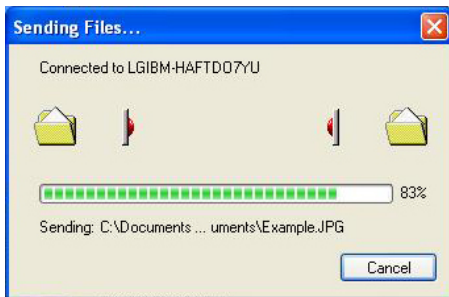
7. When the connection is established, Wireless Link program starts automatically. Wireless Link icon appears on the taskbar, and shortcut to Wireless link is created on the desktop.

Shortcut to Wireless link Wireless link icon

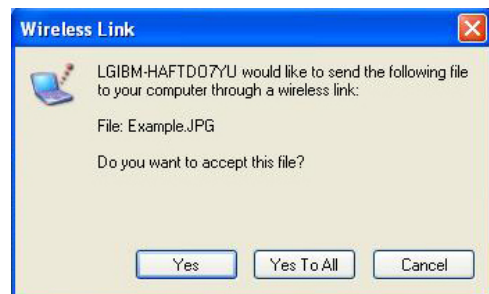


8. Double-click Wireless link icon on the taskbar. Wireless Link windows opens.
9. Select the file that you want to send, and click Send.

Sending and receiving computers show the following windows.



Sender



Receiver

10. Click Yes to start a data transfer. The data transfer is complete.



Note:

The default directory for the received data is C:\Documents and Settings\User Name\Desktop. To change the default directory, open Wireless Link and click Properties, and then choose a new default directory.

Using Wireless LAN

You can use Wireless LAN to connect to the network and use the Internet in your home and office. You can share files and folders over the network without the attaching network cables to the computer. It is composed of Wireless LAN on Windows when shipping.

Note:

Below mentioned functions are not offered by each product

***IEEE1394 / Wireless LAN / SD Memory card / S-Video port/ IrDA port/ Memory Stick**

When using LAN or Wireless LAN, refer to "Using IP Operator" (page 66). IP Operator is useful to access to network everywhere by notebook.

Connecting and using the wireless network

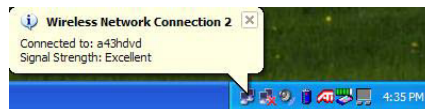
Right-click the Wireless network icon on the Taskbar and select [View available wireless network].



Select AP(Access Point) you want to connect to and type necessary information. Click [Connect].



If you place the mouse pointer on the Wireless network icon on the Taskbar, you can see the status of the wireless network.



Using IP Operator

IP Operator is useful to access to network everywhere by notebook.
User access to network at the several places (Home, Office, and Vendor etc.)
can save and modify the network environment (IP address, Domain, Workgroup).

For more detailed information, refer to **[IP Operator]**.

Double click **[IP Operator]** icon on Desktop System tray.



If the following window appears, select LAN or High-Speed Internet at the drop down menu and type the computer name you use.

The screenshot shows the 'IP Operator' window with the following settings:

- Profile:** A dropdown menu.
- Computer Name:** LGE-00HIRTMB6LZ
- LAN or High-Speed Internet:** A dropdown menu.
- Wireless Network Connection:** A dropdown menu.
- Workgroup:** WORKGROUP (selected under 'Domain' or 'Workgroup' radio buttons).
- Wireless Configuration:** 'No Wireless Network is selected' (selected under 'Manual Set' or 'Scan/Set' buttons).
- Obtain IP:** 'Obtain IP' (selected under 'Obtain IP' or 'Use following' radio buttons).
- Obtain DNS automatically:** 'Obtain DNS automatically' (selected under 'Obtain DNS automatically' or 'Use following DNS' radio buttons).
- IP Address Fields:** IP, Subnet mask, and Default Gateway, all showing '0 . 0 . 0 . 0'.
- DNS Fields:** Preferred DNS and Alternate DNS, both showing '0 . 0 . 0 . 0'.
- Buttons:** Apply, Save, Delete, Help, and Exit.

Type the name is appropriate at **[Profile List]** after making a decision whether a user belonging to **[Domain]**, or a member of **[Work Group]**.

Choose one of setting options as below.

When setting [Obtain an IP address automatically],

- IP address, Subnet mask, Default Gateway windows are changed the color as grey automatically.

When setting [Use the following IP address]

Insert IP address, Subnet mask, Default Gateway window. Then, insert DNS Server.

Click the **[Profile Save]** button when finishing inserting items in **[Profile List]**

Note:

When setting [Obtaining an IP address automatically], it is unavailable to insert IP address, Subnet mask, and Default gateway.

When pressing **[Profile Apply]**, no items appear at **[Profile List]**.

If a user needs to apply the specific item, select one of items at [Profile List], and click [Profile Apply].

Using Battery Miser

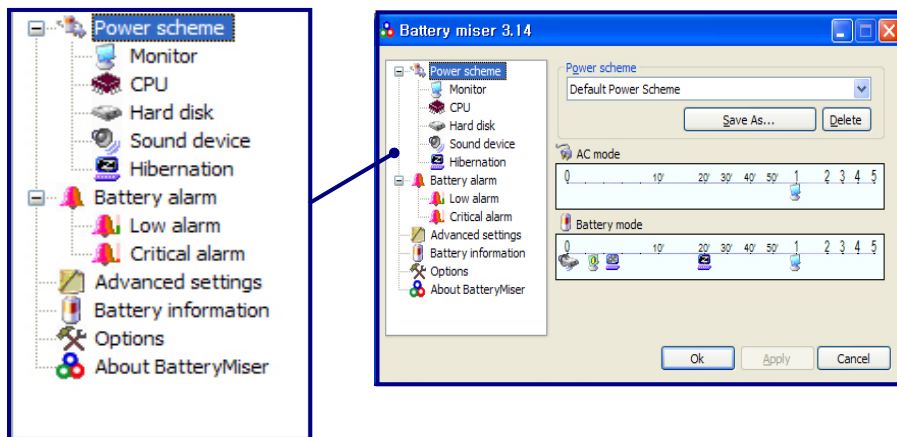
Battery Miser is the program to manage energy saving function makes the battery of notebook computer maximum. When using Battery Miser, it is available to use both original power management functions of Windows and the advanced power management functions of battery miser.

For more detailed information, refer to **[About Battery Miser]**

Double click **[Battery Miser]** icon on Desktop System tray.



Battery Miser main screen appears as below.



Power scheme:

The group that manages the power to reduce power consumption of computer peripheral units.

Battery alarm:

If the battery power gets down to low alarm, critical alarm, user can define the option for alarm is working.

Note:

When pressing the keys Fn + F8, it keeps unused sound device power management(Sound device is always ON).

When pressing one more, it return to the original set point.

When pressing the keys Fn + F9, it keeps unused Monitor power management(Monitor is always ON).

When pressing one more, it return to the original set point.

Using the keyboard

The keyboard is used for entering text and commands in the computer.

About the keyboard – 14.1inch

The keyboard is composed of character, number, and other special function keys.



Function keys: Function keys enable you to perform different operations depending on the operating system and application program you use.



Hot keys: Hot keys (shortcuts) are used in conjunction with Fn key to provide shortcuts for some of the predefined operations, such as entering power-saving mode.



Cursor control keys: You can move the cursor in the direction of the arrows.



Editing keys: You can move the cursor to the beginning or end of the current line, or up and down the screen.



About the keyboard – 15 inch

The keyboard is composed of character, number, and other special function keys.



Function keys: Function keys enable you to perform different operations depending on the operating system and application program you use.



Hot keys: Hot keys (shortcuts) are used in conjunction with Fn key to provide shortcuts for some of the predefined operations, such as entering power-saving mode.



Cursor control keys: You can move the cursor in the direction of the arrows.

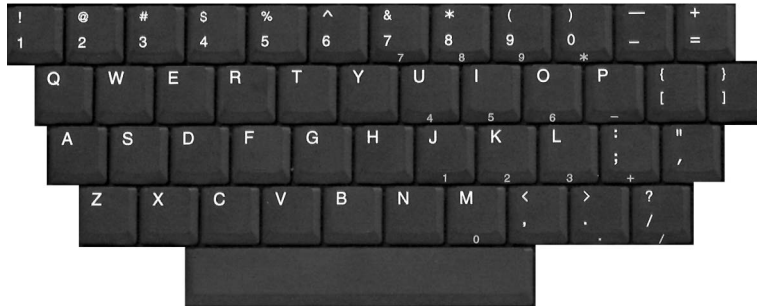


Editing keys: You can move the cursor to the beginning or end of the current line, or

up and down the screen.



Character and number keys: consist of character keys, number keys, special character keys, and spacebar. Spacebar is used for creating a space between characters.



Embedded numeric keys: You can press the combination of Fn and ScrLk keys to enable the embedded numeric keypad. Num Lock indicator lights up and enables you to use the embedded numeric keypad shown below. You can press the combination of Fn and ScrLk keys again to disable the embedded numeric keys. (To use the numeric keys, you must set the Advanced -> Internal Keypad setting to Enabled in the BIOS Setup Utility.)





Caution

Do not spill water, juice, coffee, etc on the keyboard as it may damage the computer and cause an electric shock.

Note:

In the middle of entering characters, if numbers are entered instead of characters, press the combination of Shift and ScrLk to disable the embedded numeric keys.

Modifier and special function keys



Shift key: Hold Shift key down and press another key to enter the upper case letter for the key.

Caps Lock key: Press Caps Lock key to lock the keyboard in the upper case position. When the Caps Lock indicator lights up, you can press another key in combination with Shift to enter the lower case letter for the key.

Esc key: Use Esc key to quit programs or cancel a operation in a program.

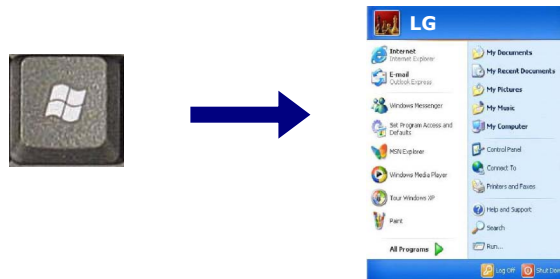
PrtSc (Print Screen) key: Press PrtSc key to take the snapshot of the entire area visible on your screen and store it in the clipboard.

Enter key: Press Enter key to enter a command or to end a line.

Shortcut menu key: Press Shortcut menu key to view shortcuts for the current program. (Shortcut menu key works the same as the right-clicking the mouse button)



Windows(R) key: Press Windows key to view the Start menu.



Note:

You can lock the keyboard in the upper/lower case position by pressing Caps Lock key. Caps Lock indicator is lighted up in upper case position. You can use the combination of Shift and a character key to enter its upper/lower case letter.

Hot keys

The following Hot keys provide you with shortcuts to operations, such as adjusting the brightness of the computer display.

Fn+F4:

Force the computer to enter power-saving mode. (ex: system standby and hibernation)

Fn+F5:

Press the combination once to disable the touch pad, and press again to enable the touch pad. (The touch pad initialization takes 1~2 seconds, so wait for the initialization to end before using the touch pad)

Fn+F6:

Wireless LAN Enable/Disable Toggle

Fn+F7:

When the computer is attached to an external monitor, you can change the display output location with Fn+F7 combination. You can switch to and from the three types of display modes, LCD display only, the external monitor only, or both at the same time.

Fn+Home:

The computer display becomes brighter.

Fn+End:

The computer display becomes darker.

Fn+F8:

Enable/disable Auto Sound power management (battery mode only). Refer to Battery Miser Help.

Fn+F9:

Enable/disable Auto Brightness control. Refer to Battery Miser Help.

Fn+F12:

Maximum power-saving mode. (when OSD is installed)

Using the touch pad



The touch pad can be used with a mouse at the same time. It has a scroll button, which functions similar to a scroll wheel on a mouse.

1. Touch pad: used to move the pointer.
2. Left button: used to select or click items.
3. Right button: functions similar to the right button on a mouse.



Caution

Guidelines on using the touch pad

Do not touch the touch pad with a sharp or pointed object as doing so may damage the touch pad.

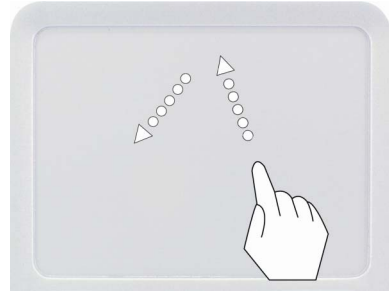
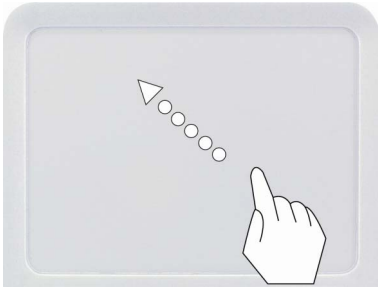
Do not remove the cover sheet of the touch pad as doing so may damage the touch pad.

Do not use the touch pad with two fingers, wearing gloves, or wet hand as it may not function correctly. Using the touch pad with a dirty or oily finger may damage the touch pad.

Do not exert too much pressure on the touch pad as doing so may result in injuries to your finger or wrist.

Moving the pointer on the screen

Gently place your finger on the touch pad and slide it in the direction in which you want the pointer to move.



Making the selection (Click)

To click a button, quickly press and release the left button. You can click the left button or gently tap the touch pad once to select an item on a menu or an icon on the screen, or position the cursor in a document.



OR



Double-click (Run)

To double-click a button, quickly press and release the left button twice. You can also tap the touch pad twice to get the same result. To launch an application, you can select and double-click the .exe file or the program icon.



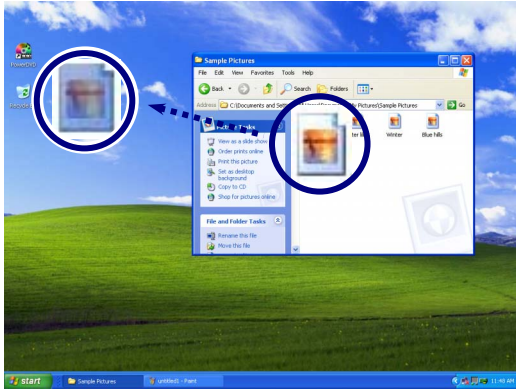
Drag and drop

To drag an object, select and move the object by clicking and holding the left button and sliding the finger across the touch pad without releasing the button.

To drop the object you have just dragged, release the left button.

You can use drag and drop to move files from one location to another.

For example, if you want to place a file in the recycle bin, place the pointer above the file you want to move, press the left button and hold, slide your finger across the touch pad to move the file and release the left button above the recycle bin.



Drag: Move the icon without releasing the left button

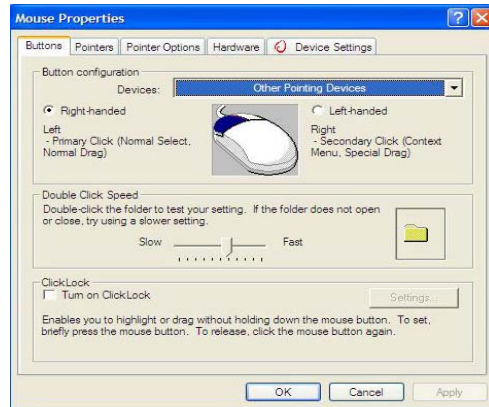
Drop: Release the left button above the recycle bin.

ClickLock: enables you to select text or drag a file without having to continuously hold down the mouse button or touch pad button.

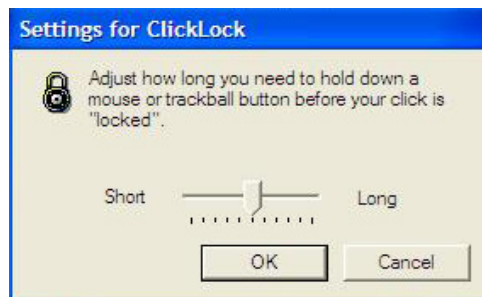
Follow the instruction below to enable ClickLock. If ClickLock is enabled, you can hold down the mouse button or touch pad button for a moment and then release it, and still get the same effect as continuously holding down the button. You can drag an object with ClickLock enabled and press again to release the button and drop the object.

Click and open the Mouse Properties window.

On the Buttons tab, under ClickLock, select Turn on ClickLock check box.

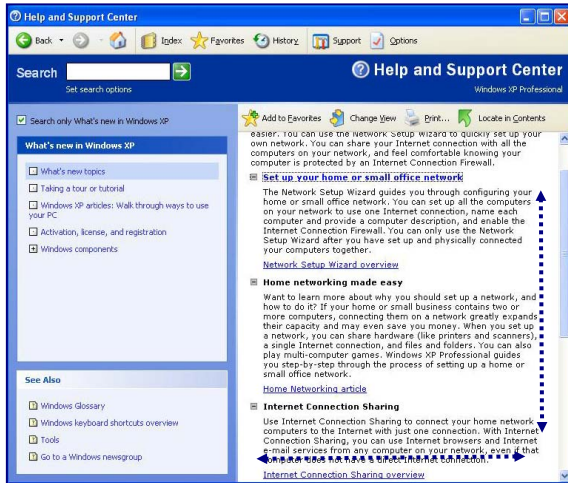


Click Settings and adjust how long you need to hold down a mouse or touch pad button to enable ClickLock, and then Select OK.



Using the scroll up/down function

Your computer supports scroll function. When using scroll function, mouse cursor at the arrow does not move. Only the scroll function will move.



You can use the scroll up/down function by pressing Fn + direction key. In a program window with a scroll bar, you can move up and down the windows using Fn + direction key. When you scroll a window using the scroll up/down function, the pointer on the screen does not move

System Setup

The system setup saves your computer's hardware configurations in CMOS RAM. The system setup provides you with information, such as the size and type of your hard disk, size of the installed memory, date, and time.

Starting the system setup

Setting a password. (Page 83)

Changing or removing the password. (Page 86)

Recovering the factory default settings. (Page 87)



Caution

Do not change the system setup arbitrarily. Incorrect system setup may result in errors while using the computer.

The menu and default factory settings of the BIOS Setup Utility may look different from this manual. They may have been changed to improve the performance of the system.

Keys used in the system setup

Enter: Select the current item.

Esc: Close the current window or move to the previous window.

CursorControl Keys: Move up, down, left, and right.

+ -: Increase and decrease the value.

Page Up: Move to the first item.

Page Down: Move to the last item.

F10: Save and exit the system setup.

Note:

Cursor control keys (arrow keys) move the cursor up, down, to the left and right.

Turn on the computer.

When LG logo appears on the screen, press F2.

The BIOS Setup Utility window appears.

PhoenixBIOS Setup Utility				
Main	Advanced	Security	Boot	Exit
<p>System Time: [10:20:30] System Date: [03/24/2003] Legacy Diskette A: [1.44/1.25 MB 3 1/2"] ► Primary Master [30006MB] ► Secondary Master [CD-ROM] ► Memory Cache System Memory: 640 kB Extended Memory: 260608 kB</p>				<p>Item Specific Help <Tab>, <Shift-Tab>, or <Enter> selects field.</p>
F1 Help	↑↓ Select Item	-/+ Change Values	F9 Setup Defaults	
Esc Exit	↔ Select Menu	Enter Select ► Sub-Menu	F10 Save and Exit	

Setting a password

If you want to protect the system setup from an unauthorized user, follow the instructions below to set a password.

You can set a password in the BIOS Setup Utility program.

**Caution**

If you forget the password, you cannot gain access to your system. Make sure you write down the password in a safe place only you can refer to in case you forget the password.

Setting a supervisor password

A password protects your computer from unauthorized users. The factory default setup does not have a password. A supervisor password prevents unauthorized users from changing the system setup.

Start the BIOS Setup Utility.

Use arrow keys to select Set Supervisor Password under Security menu, and then press Enter.

PhoenixBIOS Setup Utility				
Main	Advanced	Security	Boot	Exit
<div>Set Supervisor Password [Enter]</div> <div>Set User Password [Enter]</div>				<div>Item Specific Help</div> <div>Supervisor Password controls access to the setup utility.</div>
<div>F1 Help ↑↓ Select Item -/+ Change Values F9 Setup Defaults</div> <div>Esc Exit ↔ Select Menu Enter Select ► Sub-Menu F10 Save and Exit</div>				

Note: You can use a supervisor password to gain access and change items in the BIOS Setup Utility, and select Power on Boot. We recommend to use a user password if someone else has to use the computer.

If the following message appears, enter a new password and press Enter. A password must be consisted of character A~Z and numbers 0~9, and have the maximum length of 8.

Set Supervisor Password	
Enter New Password []	
Confirm New Password []	

If the following message appears, press Enter.

Setup Notice
Changes have been saved.
[Continue]

Press F10 to save the new settings.

If the following message appears, select Yes and press Enter to restart the computer.

Setup Confirmation
Save configuration changes and exit now?
[Yes] [No]

Setting a user password

A user password is a secondary compared to a supervisor password. You must set a supervisor password in order to set a power-on password.

Start the BIOS Setup Utility and use arrow keys to select Security menu.

Use arrow keys to select Set User Password and press Enter.

PhoenixBIOS Setup Utility			
Main	Advanced	Security	Boot Exit
Set Supervisor Password [Enter] Set User Password [Enter]		Item Specific Help Supervisor Password controls access to the setup utility.	
F1 Help	↑↓ Select Item	←→ Change Values	F9 Setup Defaults
Esc Exit	↔ Select Menu	Enter Select ► Sub-Menu	F10 Save and Exit

Note:

A power-on password gives limited access for changing the settings in the BIOS Setup Utility compared to a supervisor password.

If the following message appears, enter a new password and then press Enter. A password must be consisted of character A~Z and numbers 0~9, and have the maximum length of 8.

Set User Password
Enter New Password []
Confirm New Password []

If the following message appears, press Enter.

Setup Notice
Changes have been saved. [Continue]

Press F10 to save the new settings.

If the following message appears, select Yes and press Enter to restart the computer.

Setup Confirmation
Save configuration changes and exit now? [Yes] [No]

Changing or removing the password

Start the BIOS Setup Utility, enter your password, and then press Enter.

To change the password, follow the instruction on Setting a password.

To remove the password, follow the instructions below.

Use arrow keys to select Security menu, and select a password you want to remove, and then press Enter.

If the following message appears, enter the current password in the bracket next to Enter Current Password, and then press Enter. Press Enter without entering a password in the brackets next to Enter New Password and Confirm New Password.

Set User Password
Enter Current Password []
Enter New Password []
Confirm New Password []

If the following message appears, press Enter.

Setup Notice
Changes have been saved. [Continue]

Press F10 to save the new settings.

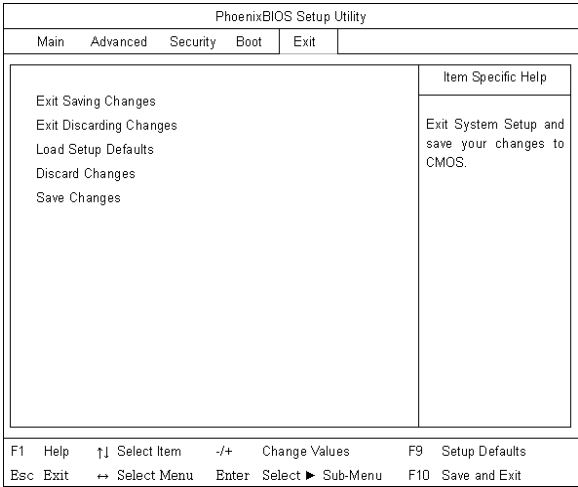
If the following message appears, select Yes and press Enter to restart the computer.

Setup Confirmation
Save configuration changes and exit now? [Yes] [No]

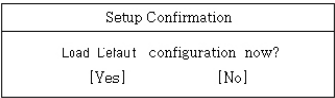
Recovering the factory default settings

If a user accidentally modifies the system setup, follow the instruction below to recover the factory default settings.

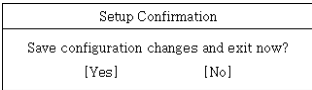
Start the BIOS Setup Utility, and use arrow keys to select Exit.
Use arrow keys to select Load Setup Defaults, and press Enter.



If the following message appears, select Yes and press Enter to recover the factory default settings.



Press F10 to save the new settings.
If the following message appears, select Yes and press Enter to restart the computer.



System Recovery

System Recovery offers to format the hard disk as shipping status of the product. User must make backup files to minimize a risk of losing data. Windows CD is provided with the product that offers system recovery contracted by Microsoft.

Using Full Recovery

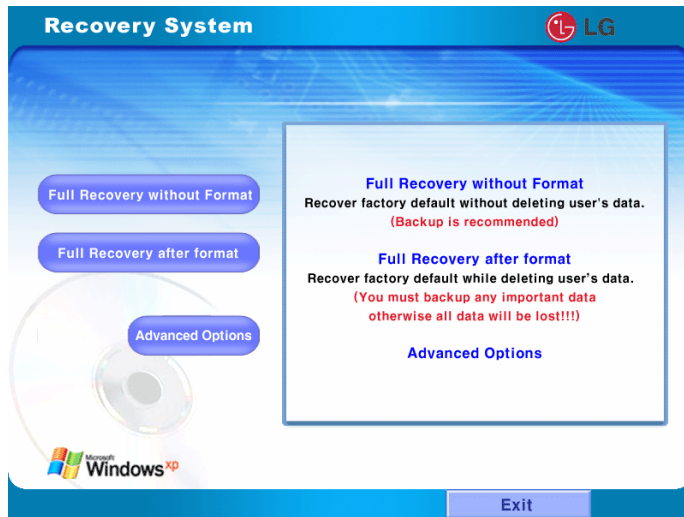
To recover hard disk completely, you must make backup for all software and data on the computer.

If Windows installation is complete, you must fill out "Windows user Registration information" as the first time to buy the product.

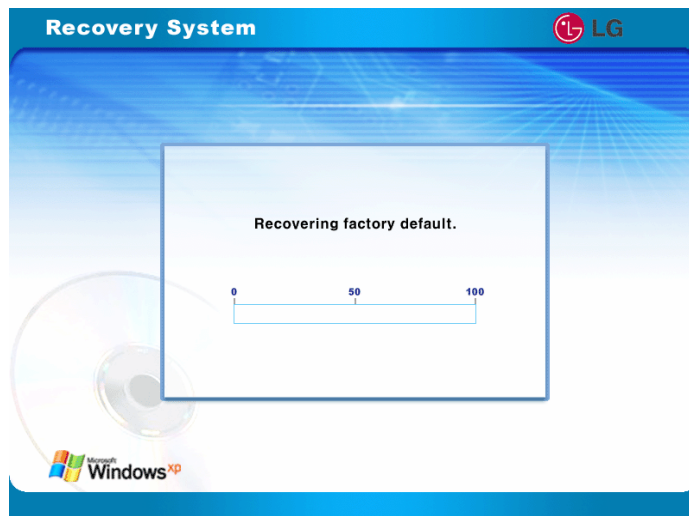
Press F11 with appearing preload image on the screen.



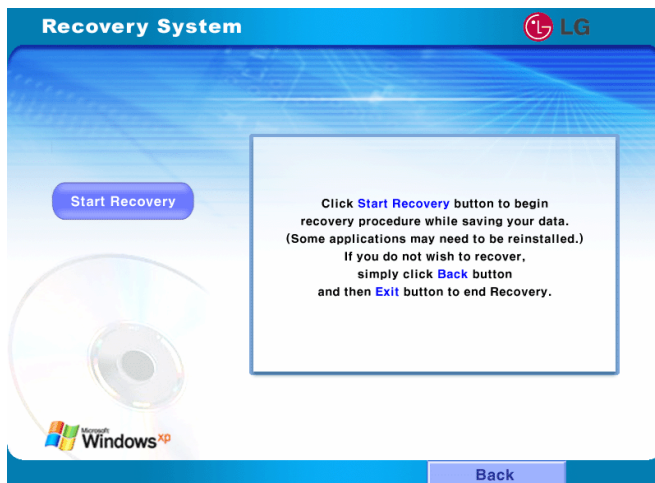
2. If the following screen appears, select one of items that works.



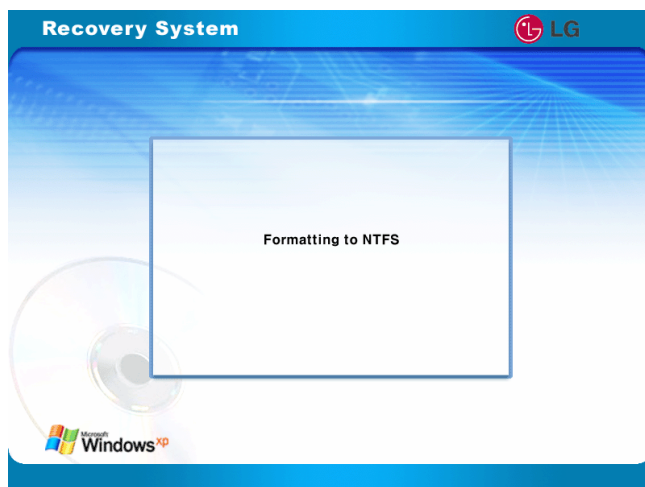
3. Select [Full Recovery without Format], or [Full Recovery after format].
 - * In the case of selecting [Full Recovery without Format].



[Recovering factory default] appears.



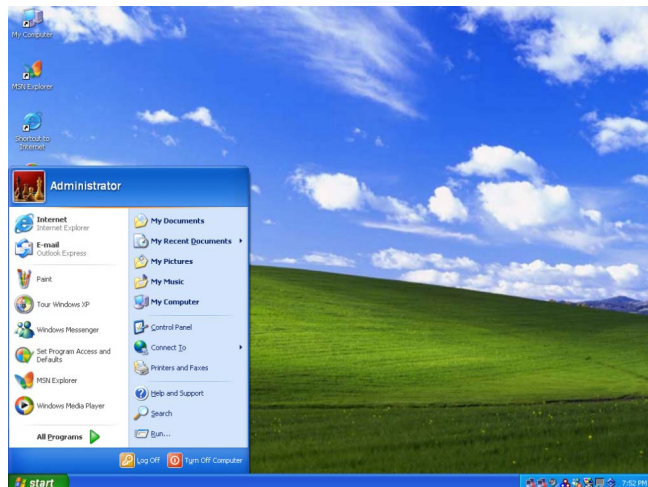
* In the case of selecting [Full Recovery after format]
Click [Start Recovery] .



"Formatting to NTFS" appears.

When starting [Full Recovery], next procedures appears on the screen.
If the following screen appears after restarting system, fill out Windows user registration information.

When clicking [Finish], the system returns to normal.



Driver re-installation

1. Turn on the computer and go to [Start]-[All Programs]-[LG GILJABI].
2. Select the device driver you want to install.
3. Follow the instructions to complete the installation. Some device drivers require you to restart the computer after the installation.



Storage/Memory

Using the optical disk drive

Different model types provide different optical disk drives. (Some models have CD-ROM drives and others have CD-RW/DVD-ROM combo drives)

Inserting a CD

Turn on the computer, and press the eject button on the CD-ROM drive.



Place the CD in the middle of the tray. (Label on the CD must face upward)



Push the tray into the CD-ROM drive.



Note:

When you use the CD-ROM or CD-RW/DVD-ROM drive, place your computer on a flat surface. The drive may not function correctly on an uneven surface.

Your computer has a CD-ROM drive with the speed of 24X or faster; therefore, the drive may rattle when you first insert a CD.

Be careful not to scratch the surface of a CD-ROM or CD-RW/DVD-ROM disk. Do not clean a CD-ROM or CD-RW/DVD-ROM disk with abrasive chemicals, such as Benzene or Paint thinner.

Do not drop or bump a CD-ROM or CD-RW/DVD-ROM disk.

Use a clean, soft cloth when removing dust or fingerprints on a CD-ROM or CDRW/DVD-ROM disk.

Removing a CD

1. Press the eject button on the CD-ROM drive to eject the disk tray.
2. Lift the CD in the middle of the disk tray.
3. Place the CD in its protective case.
4. Push the disk tray into the drive.

Playing an audio CD

Using Windows Media Player

You can use Windows(R) Media Player to play various types of audio and video files.

You can play and make a copy of an audio CD, listen to the Internet radio broadcast, play movie clips, and listen to music or watch a video on a web site. If you have a DVD drive, you can play a DVD. If you have a CD-RW drive, you can use Windows Media Player to make your own music CD.

Starting Windows Media Player 1

Turn on the computer.

Press the eject button on the drive to open the disk tray, and then insert an audio CD and close the tray.

Select the Windows Media Player and click OK. Windows Media Player starts playing the audio CD. (If you select another audio CD program, that program will play the CD instead of Windows Media Player)

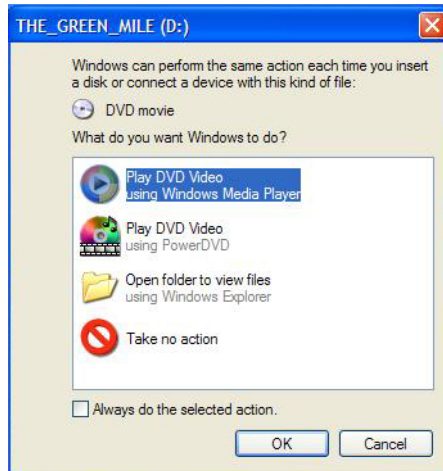
Starting Windows Media Player 2

Press Start -> All Programs -> Accessories -> Entertainment -> Windows Media Player.

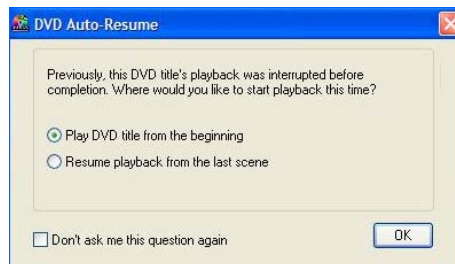
When Windows Media Player opens, press Open under File menu, and then select an audio or video file you want to play.

Using Power DVD

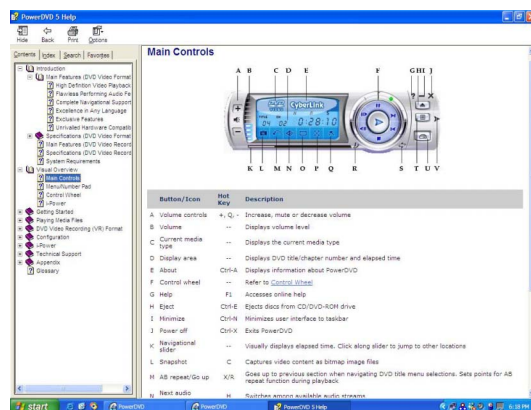
1. Insert DVD title in the DVD-COMBO drive, and close the tray.
When the following window opens, select Play DVD Play and click [Ok]



2. As you insert the DVD title, the DVD Auto-Resume window will open as shown below. Set the preference and click [Ok]. If you check "Don't ask me this question again", it will not open next time automatically and play as you preferred.



3. Power DVD will now play. You can read the detailed instruction of the Power DVD in the Help menu from the main control.



Note:

If unchecked on “Don’t ask me this question again”, you will receive the message every time you open the Power DVD. If you delete the DVD title and play it again, you will also receive the preference window.

You can change the region counter only 5 times. After the 5th change, it is not possible to change. Be cautious when you try to change the regional code.

Do not open the DVD tray and remove the DVD title while it is still playing. It may damage the system or the DVD title.

Using an SD Memory Card / SONY Memory Stick

Your computer can read from and write to an SD Memory Card / Memory Stick.

Note: Photo images may look different from the actual product.

Inserting an SD Memory Card / Memory Stick

Turn on the computer, and place the SD Memory Card / Memory Stick in the SD Memory Card slot.



Push the SD Memory Card / Memory Stick into the slot until it clicks.



Removing the SD Memory Card / Memory Stick

1. Press the SD Memory Card / Memory Stick with the tip of your finger.
2. The SD Memory Card / Memory Stick ejects.

Note:

Below mentioned functions are not offered by each product

***IEEE1394 / Wireless LAN / SD Memory card / S-Video port / IrDA port/
Memory Stick**

Installing memory

When you are using the computer, you may want to increase the memory capacity.

About memory

Your computer uses DDR (Double Data Rate) SDRAM SO-DIMM (Dual In-Line Memory Module) with 200 pins.

Each memory socket can support a memory module from 64MB to 1024MB, and the maximum memory capacity of the computer is 2048MB.

Before installing memory

When installing or removing the memory modules, be careful not to expose them to the static electricity as it can damage the modules.

Make sure the type of memory installed in your computer is the same as the memory you are about to install.

Note:

Use only the correct type of memory module (DDR SDRAM using 2.5V).

Different models of computer can use different memory modules.

DDR memory has higher data-transfer rate and different shape compared to the typical memory.





Caution

Your computer supports PC2700/DDR SDRAM SO-DIMM 333MHz/266MHz/200MHz with FSB Frequency of 400MHz.



Warning

Before disassembling the computer for upgrading purposes, turn off the power and remove the power cord, phone line, and battery pack. There is the risk of electric shock or fire. If you need to open the computer cover, contact the customer service for help.

Purchasing memory

Be sure to buy the correct type of memory modules for your computer.

Type: PC2700 (200 pin DDR SDRAM SO-DIMM)

Speed: 333MHz (166MHz X2), 266MHz (133MHz X2), 200MHz (100MHz X2)

Size: 128MB, 256MB, 512MB, 1024MB

Installing memory

Main board configuration, memory socket, and memory module may look different in different models of computer.

Loosen the screw at the bottom of the computer, and remove the memory slot cover.



Note:

Before removing the cover, shut down your computer, remove AC adapter and battery pack, and detach any device or cable that are attached to the computer.

Use the notch on the memory to make sure the memory aligns with the socket, and then inserts the memory into the socket at an angle of approximately 30 degrees.

**Note:**

Push down the memory until the latch firmly secures the memory on the socket.



Push down the memory until you hear a click.



**Caution**

Use only the memory module sold by LG. Using other memory modules can damage your computer.

Close the cover and tighten the screw.

After the installation, reboot the computer. If you see an error message regarding memory capacity, click F2 to enter the BIOS Setup Utility and save the settings.

Note:

When rebooting the computer, make sure the size of installed memory is correct. If different, re-install the memory module.

**Model**

LM40/50, LS40/50

Processor

Dothan Migration

Note:

The CPU cannot be replaced or upgraded by the user. The computer is equipped with a different CPU depending on the model type.

Memory

Built-in: 256MB DDR SDRAM SO-DIMM

Maximum: 1024MB on each slot and 2048MB combined

Memory Type: DDR SDRAM SO-DIMM (128MB, 256MB, 512MB, and 1024MB)

BIOS ROM

ROM: 8Mbit

Storage devices

2.5-inch hard disk drive (The capacity of the hard disk drive is different depending on the model type.)

PC Card slot

SD Memory Card slot / Memory Stick

Optical drive (DVD combo, DVD-ROM drive or DVD RW)

Note: The specification for the optical drive depends on the model type)

External I/O Interfaces

External monitor port
25-pin parallel port
PC Card slot
Microphone jack
Speaker/Headphone jack
S/PDIF
IrDA port
3 Universal Serial Bus (USB) devices
RJ11 telephone port
RJ45 Ethernet port
IEEE 1394 port
S-Video port

Display

ATI Mobility Radeon 9200, 9600 or 9700 Graphics Controller
4XAGP
Video Memory: 32MB or 64MB
XGA (1024X768) for 14.1 inch, SXGA+ for 15 inch.

Note: the resolution and/or type of Graphics Controller are different depending on the model type.

Sound

ANALOG DEVICES AC'97 SoundMAX Codec (AD1981A)

Dimension

331(W) X 274(D) X 24.3~32.1(H) mm

LAN

3COM 3c920
RJ45 Ethernet connector

Modem

AMBIT T60M283.13 (MDC Card) / RJ11 Telephone connector
To reduce the risk of fire, use only No.26 AWG or thicker telephone cable.

Power specification



AC Adapter (Free Voltage)

Input: AC 100 ~ 240V, 1.6A, 50 ~ 60Hz

Output: DC 18.5V, 3.5A, 65W

Note: Use the correct adaptor for your computer.

Battery Pack (Li-Ion)

DC 11.1V, 4400mAh (6-cell)

Charging time

Less than 3 hours (6-cell) or 4 hours (9-cell) with the power off in room temperature (9.6 ~ 40 °C/ 49.28 ~ 104 °F)

Less than 32 hours with the power off in low temperature (0 ~ 9.6 °C/ 32 ~ 49.28 °F)

Note: The battery cannot be charged below 0 degrees C(32 °F).

The temperature indicated above is the temperature inside the battery pack; the actual temperature may be different.

Battery Life

More than 5hours (6-cell) (Battery Mark(TM) V4.0.1)

Backup (standby) battery

RTC battery Ni-MH Coin 3V 60mm

Recommended battery: CR2032 manufactured by Sony or equivalent type.

Operating environment



Operating

10 ~ 35 °C(50 ~ 95 °F), 20 ~ 80% relative humidity

Non-operating

-10 ~ 60 °C(14 ~ 140 °F), 10 ~ 80% relative humidity