

# LG-C300 User Guide

Some of the content of this manual may differ from your phone depending on the software of the phone or your service provider.

## Disposal of your old appliance

- When this crossed-out wheeled bin symbol is attached to a product it means the product is covered by the European Directive 2002/96/EC.
- All electrical and electronic products should be disposed of separately from the municipal waste stream via designated collection facilities appointed by the government or the local authorities.
- The correct disposal of your old appliance will help prevent potential negative consequences for the environment and human health.
- For more detailed information about disposal of your old appliance, please contact your city office, waste disposal service or the shop where you purchased the product.

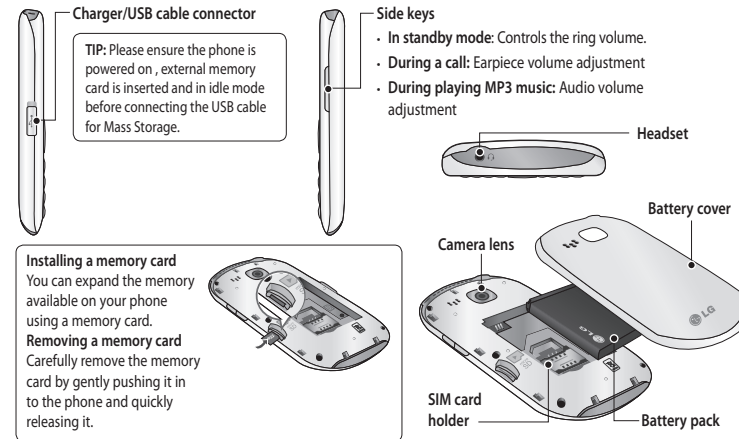


www.lg.com  
Bluetooth QD ID B016671

P/N: MMBB0392915(1.0)

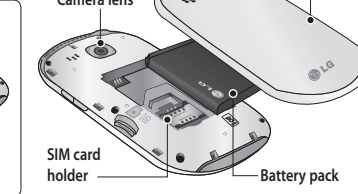
## Getting to Know Your Phone

- Earpiece**
- Send key**
  - Dials a phone number and answers a call.
  - In standby mode:** Shows the history of calls.
- Alpha numeric keys**
  - In standby mode:** Input numbers to dial **Hold down**
    - International calls
    - Connect voice mail centre
    - Speed dials
  - Hold the key down to go Silent mode
- Confirm key / OK key**
  - Selects menu options and confirms actions.
- Soft keys (Left soft key / Right soft key)**
  - These keys perform the function indicated in the bottom of the display.
- Main LCD**
- End key**
  - Switch on/off (hold down)
  - End or reject a call.
- Navigation key**
  - In standby mode:**
    - Briefly: Mp3 player
    - Briefly: Camera
    - Briefly: Toolbar when it was set. (Menu > Settings > Display > Homescreen > Display Items)
  - In menu:** Scroll up & down.



**Installing a memory card**  
You can expand the memory available on your phone using a memory card.

**Removing a memory card**  
Carefully remove the memory card by gently pushing it in to the phone and quickly releasing it.



## Installing the SIM Card and Charging the Battery

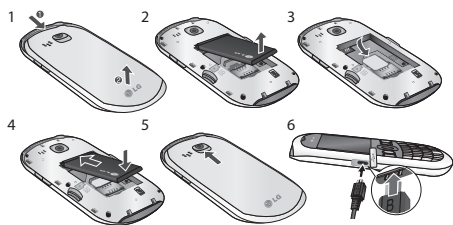
### Installing the SIM Card

When you subscribe to a cellular network, you are provided with a plug-in SIM card loaded with your subscription details, such as your PIN, any optional services available and many others.

**Important!** The plug-in SIM card can be easily damaged by scratches or bending, so be careful when handling, inserting or removing the card. Keep all SIM cards out of the reach of small children.

### Illustrations

- Open the battery cover
  - Remove the battery
  - Insert your SIM
  - Insert your battery
  - Close the battery cover
  - Charge your battery
- > If the phone won't turn on, or if the display freezes or doesn't respond, follow the instructions for installing the battery again.



**WARNING:** Do not remove the battery when the phone is switched on, as this may damage the phone.

### After taking a photo

Your captured photo will appear on the screen. The image name is shown on the bottom top of the screen with five icons on the bottom side.

- Album** - View the pictures and videos you have taken in your Album.
- Send** - Send the photo as **Message**, as an Email or via **Bluetooth**.
- New** - Take another photo straight away.
- Set as** - Use the image as Wallpaper, as a **Contact** image, or in your Start up image or Shut down image.
- Delete** - Delete the photo you have just taken. The viewfinder will reappear.

### Video Camera

#### Shooting a quick video

- Press **Menu** and select **Camera** and choose **Video Camera**. The video camera's viewfinder will appear on screen.
- Focus the camera on what to record.

#### 7 Select Send.

**WARNING:** Image, Sound, Video, New slide, Subject, Business card, Schedule or My business card is added to the message editor, it will be automatically converted to MMS mode and you will be charged accordingly.

#### Entering text

You can enter alphanumeric characters using the phone's keypad. For example, storing names in contacts, writing a message and creating scheduling events in the calendar all require entering text. The following text input methods are available in the phone: Abc mode, and 123 mode.

**NOTE:** Some fields may allow only one input mode (e.g. telephone number in contact fields).

#### Changing your text message settings

Press **Menu**, select **Messaging**, then choose **Settings** and **Text message**. You can make changes to:

- Select the **Rec.** icon on the bottom-centre of the screen and press **OK** to take a video. **Rec.** will appear at the bottom of the viewfinder. Press **OK** again to stop recording.

#### After you've shot your video

A still image representing your captured video will appear on screen. After recording a video clip, you can check the menu as follow:

- Album** - View the pictures and videos you have taken in your Album.
- Play** - Play the file.
- New** - Press to shoot another video straight away.
- Send** - Send the video as **Message**, as an Email or via **Bluetooth**.
- Delete** - Delete the video you have just made. The viewfinder will reappear.

- Text message centre** - Enter the details for your message centre.
- Delivery report** - Choose to receive confirmation that your message have been delivered.
- Validity period** - Choose how long your messages are stored at the message centre.
- Message types** - Convert your text into **Voice**, **Fax**, **X.400** or **Email**.
- Character encoding** - Choose how your characters are encoded. This affects the size of your message and therefore data costs.
- Send long text as** - Choose whether to send your message as Multiple SMS or MMS when you enter a text longer than 2 pages in the message field.

#### Changing your multimedia message settings

Press **Menu**, select **Messaging**, then choose **Settings** and **Multimedia message**. You can make changes to:

- Retrieval mode** - Choose to automatically or manually download multimedia messages depending on whether

## Calling

### Making a Call

- Make sure your phone is on.
- You can use the keypad. To delete a digit press back arrow.
- Press **Call** to begin the call.
- To end the call, press **End**.

**TIP!** To enter + when making an international call, press and hold 0.

### Making a call from your Contacts

It's easy to call anyone whose number you have stored in your Phonebook.

- Press **Menu** to open the main menu. Select **Phonebook**.
- Using the keypad, enter the first letter of the contact you want to call and scroll to the **Phonebook**.
- Press **Call** to begin the call.

## Music

### MP3 Player

Your LG-C300 has a built-in music player so you can play all your favourite music.

**NOTE:**

- Before using music player, you will need to transfer music file onto your phone.
- Music player supports codec types as follows: MP3, WMA, AAC. Music player does not necessarily support all features and variations of file formats.

To access the music player, press **Menu** and select **Music** and select **MP3 player**. From here you can access to:

- Recently played** - View all of the songs you have played recently.
- All songs** - Contains all of the songs you have on your phone.
- My Playlists** - Contains all playlists you have created.
- Artists** - Allows you to view all tracks sorted by artist.

you are at home or roaming.

- Delivery report** - Choose to request or allow a delivery report.
- Read reply** - Choose to request or allow a read reply.
- Priority** - Choose the priority level of your multimedia message.
- Validity period** - Choose how long your message is stored at the message centre.
- Slide duration** - Choose how long your slides appear on screen.
- Creation mode** - Allows you to select the contents type supported by MMS.
- Delivery time** - Configures the delivery time of message to the recipient. The multimedia message centre will deliver the message after the delivery time.
- Multi msg centre** - Allows you to configure network information such as the multimedia service centre and the internet profile to send a multimedia message.

### Answering and rejecting a call

When your phone rings, press **Accept** or press **End** to answer the call.

While your phone is ringing you can press **Silent** to mute the ringing. This is useful if you have forgotten to change your profile to silent for a meeting.

Press **Reject** or select **Reject** in order to reject an incoming call.

**NOTE:** In call when speaker is activated, the speaker icon is displayed with red colour cross, when the speaker is deactivated speaker icon is displayed without red colour cross.

### Speed dialing

You can assign a speed dial number to a contact you call frequently.

### Viewing your Call History

You can only check the log of missed, received and dialed calls if the network supports Calling Line Identification (CLI) within the service area.

- Albums** - Allows you to view all tracks sorted by album.
- Genres** - Allows you to view all tracks sorted by genre.
- Shuffle all songs** - Allows you to play all of the songs in random order.

## E-Mail

### Sending an email using your new account

To send/receive an email, you should set up an email account.

- Press **Menu**, select **E-Mail** and choose the account you want to use.
- Choose **Write e-mail** and a new email window will open.
- Write a subject line then press **OK**.
- Enter your message using the keypad.

## FM Radio

### Listening to the Radio

- Press **Menu** and select **Music**, then choose **FM radio**.
- Select the channel number of the station you would like to listen to.

## More

### Setting your Alarm

Finally you can set the snooze interval at 5, 10, 20, 30 minutes, 1 hour or off.

### Adding an event to your calendar

Select the date you would like to add an event to. You can choose a date either by scrolling to it using the navigation keys or by selecting **Options** and **Go to date** in order to enter a date.

### Adding an item to your task list

You can edit an item by selecting it, pressing **Options** and **Edit**. Confirm your amends by selecting **Done**.

### Adding a memo

You can lock the memo. Press **Option** and select **Lock** for the private memo to protect privacy.

### Date finder

Date finder is a handy tool to help you calculate what the date will be once a certain number of days have passed.

### Changing the call settings

You can set call-specific functions. Press **Menu**, select **Settings** and choose **Call**.

- Call divert** - Choose whether to divert your calls.
- Call barring** - Select which calls you would like to be barred.
- Call waiting** - Be alerted when you have a call waiting.
- Fixed dial numbers** - Choose a list of numbers that can be called from your phone.
- Excuse message**
- Call reject settings** - Select **Off** or **On** and choose to reject all calls, those from specific groups, contacts, unregistered numbers (those not in your list of contacts) or those with no caller ID.
- Send my number** - Choose whether your number will be displayed when you call someone. (Depends on your network provider.)
- Auto redial** - Allows you to set the auto redial function when a call attempt has failed.

**NOTE:** If you are in an area with bad radio reception, you may have difficulty listening to the radio. It is recommended that you insert headphones into the hands-free connector when listening to the radio to ensure good radio reception.

## Web

### Accessing the web

You can launch the WAP browser and access the homepage of the activated profile on web settings. You can also manually enter a URL address and access the associated WAP page.

- Press **Menu** and select **Tesco Mobile**.
- To go straight to the browser home page, select **Home**. Alternately, select **Enter address** and type in the URL, followed by **Connect**.

**NOTE:** You will incur extra cost by connecting to these services and downloading content. Check data charges with your network provider.

### Voice recorder

Use your **Voice recorder** to record voice memos or other sounds.

### Sending a voice recording

Once you have finished recording, select **Options**.

### Using your calculator

- Press **Menu** and select **More**, then choose **Calculator**.
- Press the numeric keys to input numbers.

### Using the stopwatch

- Press **Menu** and select **More**, then choose **Stopwatch**.
- Select **Start** to begin the timer.

### Converting Units

- Press **Menu** and select **More**, then choose **Unit converter**.
- Choose whether you would like to convert **Currency**, **Area**, **Length**, **Weight**, **Temperature**, **Volume** or **Velocity**.

### Minute minder

- Determines whether to sound a tone every 1 minute when you are in the call.
- Bluetooth answer mode** - Choose how to answer a call when using a Bluetooth headset. Select **Hands-free** or **Headset**.
- Save new number** - Selecting this option will save numbers that are not already in your contacts upon ending the call.
- Call costs** - View the charges applied to your last call or all calls. This service is network dependent, some operators are unable to support this.

## Camera

### Taking a quick photo

- Press **Menu** and select **Camera** and **Camera**.
- When the camera has focused on your subject, select the **Capture** icon on the bottom-centre of the screen and press **OK** to take a photo.

## Messaging

Your LG-C300 includes functions related to SMS (Short Message Service), MMS (Multimedia Message Service) as well as the network's service messages. To use these functions, press **Menu** and select **Messaging**.

### Sending a message

- Press **Menu**, select **Messaging** and choose **Write message**.
- A new message editor will open. Message editor combines **SMS** and **MMS** in one intuitive mode that is easy to switch between. The default setting of the message editor is **SMS** mode.
- Enter your message using the keypad. See **Entering text** on the right for more information on how to enter text.
- Select **Options** and choose **Insert** to add an **Image**, **Video**, **Sound**, **Template**, **Emoticon**, **Name & Number**, **New slide**, **Subject** or **More** (**Business card**/**Schedule**/**Memo**/**Task**/**My business card**).
- Choose **Send**.
- Choose a contact from the list of contacts or enter the phone number.

### Adding a city to your World clock

- Press **Menu** and select **More**, then choose **World clock**.
- To find out the time of specific city, press **Options** and select **New city**.

## Settings

### Changing your profiles

- Press **Menu** and select **Settings**.
- Select **Profiles** and then choose the profile you want to edit.
- Select **Options** and choose **Personalise**.
- You can change all of the tones, its volumes and alert options from here.

