

LG **CE 0168** P/N: MMBB0366371 (1.0)

GS108 User Guide - English

This guide will help you understand your new mobile phone. It will provide you with useful explanations of features on your phone. Some of the contents in this manual may differ from your phone depending on the software of the phone or your service provider.



Disposal of your old appliance

- When this crossed-out wheeled bin symbol is attached to a product it means the product is covered by the European Directive 2002/96/EC.
- All electrical and electronic products should be disposed of separately from the municipal waste stream via designated collection facilities appointed by the government or the local authorities.
- The correct disposal of your old appliance will help prevent potential negative consequences for the environment and human health.
- For more detailed information about disposal of your old appliance, please contact your city office, waste disposal service or the shop where you purchased the product.

Getting to know your phone



Menu map

Messaging 1 New message 2 Inbox 3 Drafts 4 Outbox 5 Sent 6 Listen voice mail 7 Info messages 8 Templates 9 Settings	Contacts 1 Search 2 New contact 3 Speed dials 4 Copy all 5 Delete all 6 Memory status 7 Information	Call history 1 All calls 2 Missed calls 3 Dialed calls 4 Received calls 5 Call duration	Games 1 Space ball	FM radio
Profiles 1 General 2 Silent 3 Vibrate only 4 Outdoor 5 Flight mode 6 Headset	Tools 1 Torch 2 Fake call 3 Calculator 4 Stopwatch 5 Unit converter 6 World clock 7 SIM Services	Organiser 1 Alarm 2 Calendar 3 Memo	Settings 1 Date & Time 2 Language 3 Display 4 Call 5 Auto keylock 6 Security 7 Power save 8 Network selection 9 Reset settings 0 Memory status	

Messaging

Sending a message

- Press **Menu**, select **Messaging** and choose **New message**.
- A new message editor will open. The default setting of the message editor is SMS mode.
- Enter your message using either the T9 predictive mode or Abc manual mode. You can switch text input mode by pressing **Shift**.
- Press **Options** and choose **Insert** to add an **Symbol**, **Template**, **Contact**, **Business card**.
- Press **Send to**.
- Enter the phone number or press **Options** and select **Contacts** or **Recent list** to open your contacts list select the number and press **insert** then option.
- Press **Send**.

Entering text

You can enter alphanumeric characters using the phone's keypad. For example, storing names in Contacts, writing a message and creating scheduling events in the calendar all require entering text. The following text input methods are available in the phone: T9 predictive mode, ABC manual mode and 123 mode.

Note: Some fields may allow only one text input mode (e.g. telephone number in address book fields).

Organiser / Tools

Setting your alarm (Menu > Organiser > Alarm)

You can set up to 3 alarm clocks to go off at a specified time.

Using the calendar (Menu > Organiser > Calendar)

When you enter this menu, a calendar appears. A square cursor is located on the current date. You can move the cursor to another date using the navigation keys.

Adding a memo (Menu > Organiser > Memo)

You can register your own memos here.

Torch (Menu > Tools > Torch)

You can turn on/off the flash light.

Setting your fake call (Menu > Tools > Fake call)

You can receive a fake call after setting time.

Calls

Making a call

- Key in the number using the keypad.
- Press **Call** to initiate the call.
- To end the call, press **End**.

TIP! To enter + when making an international call, press and hold 0.

Making a call from your contacts

- Press **Address Book** to open the address book.
- Using the keypad, enter the first letter of the contact you want to call.
- To scroll through the contacts use up and down navigation keys. And to scroll through their different numbers use left and right navigation keys.
- Press **Call** to initiate the call.

Answering and rejecting a call

When your phone rings, press **Accept** or press **Call** to answer the call. While your phone is ringing, select **Silent** to mute the ringing. This is great if you have forgotten to change your profile to **Silent** for a meeting. Press **Call** or **Reject** to reject the incoming call.

T9 predictive mode

T9 predictive mode uses a built-in dictionary to recognise words you're writing based on the key sequences you press. Simply press the number key associated with the letter you want to enter, and the dictionary will recognise the word once all the letters are entered.

ABC manual mode

This mode allows you to enter letters by pressing the key labeled with the required letter once, twice, three or four times until the letter is displayed.

123 mode

Type numbers using one keystroke per number. You can also add numbers while remaining in letter modes by pressing and holding the desired key.

FM radio (Wireless FM)

With embedded FM antenna, you can receive FM radio without an external earphone. You can listen to your favor radio station anytime.

Note: In weak FM radio signal area the sensitivity can degrade with wireless and antenna mode. So it is advisable to insert the ear-mic for better and enhanced FM quality.

Using your calculator (Menu > Tools > Calculator)

The calculator provides the basic arithmetic functions: addition, subtraction, multiplication and division.

Using the stopwatch (Menu > Tools > Stopwatch)

This option allows you to use the function of a stopwatch.

Converting a unit (Menu > Tools > Unit converter)

This converts many measurements into a unit you want.

Adding a city to your world clock (Menu > Tools > World clock)

You can check the current time of Greenwich Mean Time (GMT) and major cities around the world.

SIM services (Menu > Tools > SIM services)

This feature depends on SIM and the network services. In case the SIM card supports SAT (i.e. SIM Application Toolkit) services, this menu will be the operator specific service name stored on the SIM card.

Installing the SIM Card and Charging the Battery

Installing the SIM Card

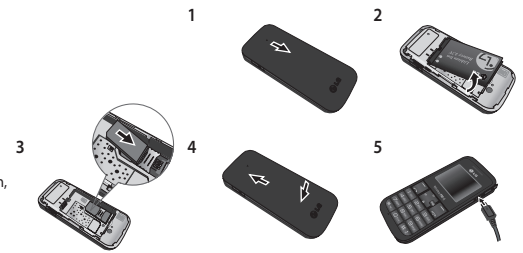
When you subscribe to a cellular network, you are provided with a plug-in SIM card loaded with your subscription details, such as your PIN, any optional services available and many others.

Important! The plug-in SIM card and its contacts can be easily damaged by scratches or bending, so be careful when handling, inserting or removing the card. Keep all SIM cards out of the reach of small children.
 > only 2G/2.5G SIM supported

Illustrations

- Open battery cover
- Remove the battery
- Insert your SIM
- Close the battery cover
- Charge your battery

WARNING: Do not remove the battery when the phone is switched on, as this may damage the phone.



TIP! You can change the settings on your phone to answer your calls in different ways. Press **Menu**, select **Settings** and choose **Call**. Select **Answer mode** and choose from **Any key** or **send key only**.

Changing the call settings

You can set the menu relevant to a call. Press **Menu**, select **Settings** and choose **Call**.

- Call divert** - Select methods of call divert.
- Call waiting** - Select active or cancel call waiting.

Checking your call history

You can check the record of all, missed, dialed, received calls and call duration. The number and name (if available) are displayed together with the date and time at which the call was made. You can also view the number of times you have called. Press **Menu**, select **Call history**.

Contacts

Searching for a contact

You can search for a contact in your contacts.

- Press **Contacts** and choose **Search**, select **Contacts** from the **Menu** screen or press **Search** from the standby screen.
- Using the keypad enter the first letter of the contact you want to call.
- To scroll through the contacts and their different numbers use **Left** and **Right**.

Listening to the radio

- Press **Menu** and select **FM radio**.
- Select the channel number of the station you would like to listen to.

Note: You can listen to the radio via built-in speaker. Press **Options**, select **Listen via** and choose **Speaker**.

Games

Your GS108 comes with preloaded games to keep you amused when you have time to spare. Press **Menu** and select **Games**.

Profiles

Changing your profiles

You change your profile by pressing **Menu**>**Profiles**, then choose from **General**, **Silent**, **Vibrate only**, **Outdoor**, **Flight mode** and **Headset**.

Using flight mode (Menu > Profiles > Flight mode)

Use this function to switch the flight mode **On** or **Off**. You will not be able to make calls, Connect to the internet, Send messages when **Flight mode** is switched **On**.

Settings

Changing your date & time (Menu > Settings > Date & Time)

You can set functions relating to the date and time.

Changing the language (Menu > Settings > Language)

You can change the language for the display texts in your phone. This change will also affect the language input mode.

Changing your display settings (Menu > Settings > Display)

You can change the settings for the phone display.

Changing your security settings (Menu > Settings > Security)

Change your security settings to keep your GS108 and the important information it holds protected. The default security code is 0000.

- PIN code request** - Choose a PIN code to be requested when you turn your phone on.
- Phone lock** - Choose a security code to lock your phone, **When power on**, **When SIM changed** or **Immediately**.
- Anti Theft Mobile Tracker** - When the handset is stolen, handset sends the SMS to the numbers configured by real owner. User has to configure the ATMT settings with name, primary phone number, secondary number. User has to Set ATMT ON to activate the ATMT feature. Default ATMT code is "0000". ATMT SMS will contain information about the stolen phone IMEI, current location & number of the person who is using that handset.
- Change codes** - Change your **Security code**, **PIN2 code** or **ATMT code**.

Power save (Menu > Settings > Power save)

If you set **Always on**, you can save the battery power when you don't use the phone. Choose to switch the power save settings **Always on**, **Night only** or **Off**.

Resetting your phone (Menu > Settings > Reset settings)

Use **Reset** to reset all the settings to their factory definitions. You need the security code to activate this function. The default number is "0000".

Using flight mode (Menu > Profiles > Flight mode)

Use this function to switch the flight mode **On** or **Off** You will not be able to make calls, Connect to the internet, Send messages when **Flight mode** is switched **On**.

Product care and maintenance

⚠ WARNING

Only use batteries, chargers and accessories approved for use with this particular phone model. The use of any other types may invalidate any approval or warranty applying to the phone, and may be dangerous.

- Do not disassemble this unit. Take it to a qualified service technician when repair work is required.
- Keep away from electrical appliances such as TVs, radios, and personal computers.
- The unit should be kept away from heat sources such as radiators or cookers.
- Do not drop.
- Do not subject this unit to mechanical vibration or shock.
- The coating of the phone may be damaged if covered with wrap or vinyl wrapper.
- Use dry cloth to clean the exterior of the unit. (Do not use solvent such as benzene, thinner or alcohol.)
- Do not subject this unit to excessive smoke or dust.
- Do not keep the phone next to credit cards or transport tickets; it can affect the information on the magnetic strips.
- Do not tap the screen with a sharp object; otherwise, it may damage the phone.
- Do not expose the phone to liquid or moisture.
- Use the accessories like an earphone cautiously. Do not press the antenna unnecessarily.

Emergency calls

Emergency calls may not be available under all mobile networks. Therefore, you should never depend solely on the phone for emergency calls. Check with your local service provider.

Battery information and care

- You do not need to completely discharge the battery before recharging. Unlike other battery systems, there is no memory effect that could compromise the battery's performance.
- Use only LG batteries and chargers. LG chargers are designed to maximize the battery life.
- Do not disassemble or short-circuit the battery pack.
- Keep the metal contacts of the battery pack clean.
- Replace the battery when it no longer provides acceptable performance. The battery pack maybe recharged hundreds of times until it needs replacing.
- Recharge the battery if it has not been used for a long time to maximize usability.
- Do not expose the battery charger to direct sunlight or use it in high humidity, such as the bathroom.
- Do not leave the battery in hot or cold places, this may deteriorate the battery performance.
- There is risk of explosion if the battery is replaced by an incorrect type.
- Dispose of used batteries according to the manufacturer's instructions. Please recycle when possible. Do not dispose as household waste.
- If you need to replace the battery, take it to the nearest authorized LG Electronics service point or dealer for assistance.
- Always unplug the charger from the wall socket after the phone is fully charged to save unnecessary power consumption of the charger.

MANUFACTURER'S WARRANTY Australia & New Zealand

2. WHAT THIS WARRANTY DOES NOT COVER:

- Defects or damage resulting from use of the Product in other than its normal and customary manner.
- Defects or damage from abnormal use, abnormal conditions, improper storage, exposure to moisture or dampness, unauthorised modifications, unauthorised connections, unauthorised repair, misuse, neglect, abuse, accident, alteration, improper installation, or other acts which are not the fault of LG, including damage caused by shipping, blown fuses, spills of food or liquid.
- Breakage or damage to antennas, unless caused directly by defects in material or workmanship.
- If the Customer does not notify LG of the alleged defect or malfunction of the Product during the applicable warranty period, the Customer shall have no coverage or benefits under this warranty.
- Products which have had the serial number removed or made illegible.
- If the battery short circuits or the seals of the battery are broken or show evidence of tampering, or the battery was used in equipment in a manner other than that which has been specified, the Customer shall have no coverage or benefits under this warranty.
- Damage resulting from use of non-LG approved accessories.
- All plastic surfaces and all other externally exposed parts that are scratched or damaged due to normal use.
- Products operated outside published maximum ratings.
- Products used or obtained in a rental program.
- Consumables (such as fuses).

Guidelines for safe and efficient use

Please read these simple guidelines. Not following these guidelines may be dangerous or illegal. Further detailed information is given in this manual.

⚠ WARNING

- Mobile Phones must be switched off at all times in an aircraft.
- Do not hold the phone in your hand while driving.
- Do not use your phone near petrol stations, fuel depots, chemical plants or blasting operations.
- For your safety, use ONLY specified ORIGINAL batteries and chargers.
- Do not handle the phone with wet hands while it is being charged. It may cause an electric shock or seriously damage your phone.
- Keep the phone in a safe place out of small children's reach. It includes small parts which if detached may cause a choking hazard.
- Do not charge the phone when it is on soft furnishings.
- The phone should be charged in a well ventilated area.

CAUTION

- Switch off the phone in any area where required by special regulations. For example, do not use your phone in hospitals or it may affect sensitive medical equipment.
- Emergency calls may not be available under all mobile networks. Therefore, you should never depend solely on the phone for emergency calls.

Efficient phone operation

Electronics devices

All mobile phones may get interference, which could affect performance.

- Do not use your mobile phone near medical equipment without requesting permission. Avoid placing the phone over pacemakers, i.e. in your breast pocket.
- Some hearing aids might be disturbed by mobile phones.
- Minor interference may affect TVs, radios, PCs, etc.

Road safety

Check the laws and regulations on the use of mobile phones in the areas when you drive.

- Do not use a hand-held phone while driving.
- Give full attention to driving.
- Use a hands-free kit, if available.
- Pull off the road and park before making or answering a call if driving conditions so require.
- RF energy may affect some electronic systems in your vehicle such as car stereos and safety equipment.
- When your vehicle is equipped with an air bag, do not obstruct with installed or portable wireless equipment. It can fail or cause serious injury due to improper performance.

If you are listening to music whilst out and about, please ensure that the volume is at a reasonable level so that you are aware of your surroundings. This is particularly imperative when near roads.

Driver Safety Tips

When driving a car, driving is your first responsibility. When using your wireless phone behind the wheel of a car, practice good common sense and remember the following tips:

- Use a hands free device. If possible, add an additional layer of convenience and safety to your wireless phone with one of the many hands free accessories available today.
 - Let the person you are speaking with know you are driving; if necessary, suspend the call in heavy traffic or hazardous weather conditions.
 - Use your wireless phone to call emergency services for yourself or others.
- In the case of fire, traffic accident or medical emergencies;
- Australia: Dial 0-0-0,
 - New Zealand: Dial 1-1-1,
 - International: Dial 1-1-2,
 - other local emergency number.
- Use your wireless phone to help others in emergencies, if you see an accident in progress or other serious emergency where lives are in danger, call the emergency number, as you would want others to do for you.
- Do not take notes or look up phone numbers while driving. Jotting down a "to do" list or flipping through your address book takes attention away from your primary responsibility, driving safely.
 - If possible, place calls when you are not moving or before pulling into traffic. Try to plan calls when you will not be driving.
 - Do not engage in stressful or emotional conversations that may be distracting. Make people you are talking with aware you are driving and suspend conversations that have the potential to divert your attention from the road.

- Only use ORIGINAL accessories to avoid damage to your phone.
- All radio transmitters carry risks of interference with electronics in close proximity. Minor interference may affect TVs, radios, PCs, etc.
- Batteries should be disposed off in accordance with relevant legislation.
- Do not dismantle the phone or battery.

Exposure to radio frequency energy

Radio wave exposure and Specific Absorption Rate (SAR) information

This mobile phone model GS108 has been designed to comply with applicable safety requirement for exposure to radio waves. This requirement is based on scientific guidelines that include safety margins designed to assure this safety of all persons, regardless of age and health.

- The radio wave exposure guidelines employ a unit of measurement known as the Specific Absorption Rate, or SAR. Tests for SAR are conducted using standardized method with the phone transmitting at its highest certified power level in all used frequency bands.
- While there may be differences between the SAR levels of various LG phone models, they are all designed to meet the relevant guidelines for exposure to radio waves.
- The SAR limit recommended by the international Commission on Non-Ionizing Radiation Protection (ICNIRP), which is 2 W/Kg averaged over ten (10) gram of tissue.
- The highest SAR value for this model phone tested by DASY4 for use at the ear is 1.20 W/Kg (10g) and when worn on the body is 0.605 W/Kg (10g).
- SAR data information for residents in countries/regions that have adopted the SAR limit recommended by the Institute of Electrical and Electronics Engineers (IEEE), which is 1.6 W/Kg averaged over one (1) gram of tissue.

Avoid damage to your hearing

Damage to your hearing can occur if you are exposed to loud sound for long periods of time. We therefore recommend that you do not turn on or off the handset close to your ear. We also recommend that music and call volumes are set to a reasonable level.

Blasting area

Do not use the phone where blasting is in progress. Observe restrictions, and follow any regulations or rules.

Potentially explosive atmospheres

- Do not use the phone at a refueling point. Don't use near fuel or chemicals.
- Do not transport or store flammable gas, liquid, or explosives in the compartment of your vehicle which contains your mobile phone and accessories.

In aircraft

Wireless devices can cause interference in aircraft.

- Turn off your mobile phone before boarding any aircraft.
- Do not use it on the aircraft without crew permission.

Children

Keep the phone in a safe place out of small children's reach. It includes small parts which if detached may cause a choking hazard.

MANUFACTURER'S WARRANTY Australia & New Zealand

1. WHAT THIS WARRANTY COVERS:

LG offers you a warranty that the enclosed Product and its enclosed accessories will be free from defects in material and workmanship according to the following terms and conditions:

- The warranty for the Product is for ONE (1) year beginning on the date of purchase of the Product.
- The warranty extends only to the original consumer purchaser of the Product ("Customer") and is not assignable or transferable to any subsequent customer. LG offers a warranty for genuine LG battery packs, extending SIX (6) months from the date of purchase.
- This warranty is only valid to the original purchasing Customer for the duration of the warranty period as long as it is purchased and used in AUSTRALIA or NEW ZEALAND.
- During the warranty period, any defective LG Product or part will be repaired or replaced by LG or its authorised service centre, at LG's option, with new or factory rebuilt replacement items. LG or the authorised service centre will return the Product to the Customer in working condition. No charge for either parts or labour in repair or replacement of the Product will be incurred by the Customer. If parts, boards or equipment are replaced, they shall become the property of LG.
- Upon request from LG, the Customer must provide LG with proof of the date of purchase.
- The Customer will bear the cost of transporting, delivering and handling the Product to and from LG or its authorised service centre.
- The benefits available from this warranty are in addition to all applicable statutory rights.

Technical data

Ambient Temperatures

Max : +55°C (discharging)
+45°C (charging)

Min : -10°C

MANUFACTURER'S WARRANTY Australia & New Zealand

- Defects or damage resulting from breakage of or tampering with the LCD screen.
- Where applicable, Products that have been subject to an unauthorised removal or deactivation of the network operator lock function.

3. STATEMENT:


Except for those terms that cannot by law be excluded, all terms other than those expressly contained in this warranty statement are excluded. To the extent permitted by law, LG excludes all liability (whether in contract, tort or otherwise) for any consequential, special, incidental or indirect loss or damage including loss of profit, loss or impairment of privacy of conversations, work stoppage or loss or impairment of data arising out of the use or inability to use the Product.



4. HOW TO GET WARRANTY SERVICE:

To obtain information regarding warranty service, please call the following toll free telephone numbers:

AUSTRALIA
LG Electronics Australia Pty Ltd
2 Wonderland Drive
Eastern Creek NSW 2766
PO Box 212
HORSLEY PARK NSW 2175
Tel: 1300 LG CARE
(1300 54 2273) Australia
Fax: 02-8805-4201

NEW ZEALAND
LG Electronics Australia Pty Ltd
Unit A, 38 Highbrook Drive
East Tamaki 2013
PO Box 58185 Greenmount
Auckland 2141
Tel: 0800 LG CARE
(0800 54 2273) New Zealand
Fax: 09-914-2441

 LG Electronics Australia Pty Ltd.

Declaration of Conformity		 LG Electronics	
Supplier Details			
Name: <input type="text"/>			
LG Electronics Inc			
Address: <input type="text"/>			
19700 Ewington Road, Fremont, CA 94558, USA			
Product Details			
Product Name: <input type="text"/>			
Model Name: <input type="text"/>			
Type Name: <input type="text"/>			
LG			
Applicable Standards Details			
IEC 60950-1:2005, IEC 60950-2:2009, IEC 60950-3:2011			
EN 60950-1:2006, EN 60950-2:2009, EN 60950-3:2011			
Declaration			
I hereby declare under our sole responsibility that the product mentioned above is in full conformity with the above mentioned EU Directives , CE Marking and Standards .			
The Customer will be held liable for any damage caused by the use of the product.			
Signature of representative: 			
Date: <input type="text"/>			