

# KG288 | USER GUIDE

This manual may differ from the phone depending on the phone software version and service provider used.



P/N: MMBB0 (1.0)

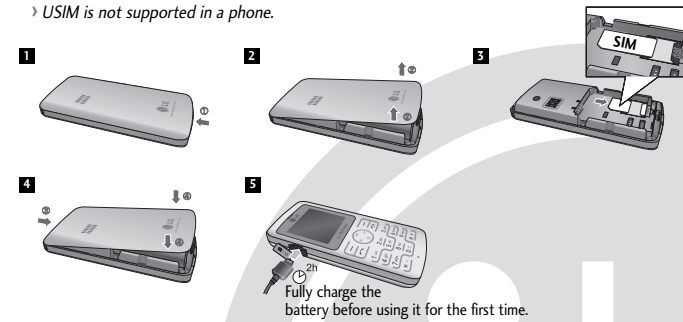
## Installing the SIM Card and Charging the Battery

### Installing the SIM Card

When you subscribe to a cellular network, you are provided with a plug-in SIM card loaded with your subscription details, such as your PIN, any optional services available and many others.

#### Important!

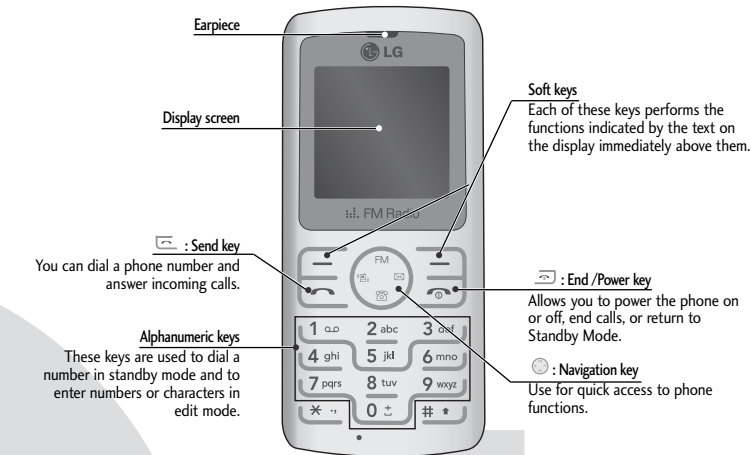
- › The plug-in SIM card and its contacts can be easily damaged by scratches or bending, so be careful when handling, inserting or removing the card. Keep all SIM cards out of the reach of small children.
- › USIM is not supported in a phone.



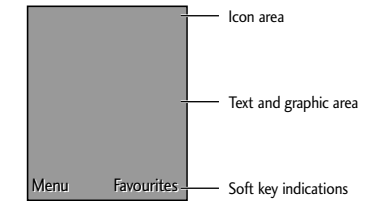
### Illustrations

1. Open battery cover
2. Insert your SIM
3. Close the battery cover
4. Charge your battery

## Phone Components



## Display Information



### On-Screen Icons

The table below describes various display indicators or icons that appear on the phone's display screen.

	Tells you the strength of the network signal.
	Call is connected.
	Shows that you are using a roaming service.
	The alarm has been set and is on.
	Tells you the status of the battery.
	You have received a text message.
	You have received a voice message.
	Vibrate only menu in profile.
	General menu in profile.
	Outdoor menu in profile.
	Silent menu in profile.
	Headset menu in profile.
	You can view your schedule.

## FM Radio (This function may be different in different regions.)

1. Press the corresponding number key of a channel to store the selected radio station.
2. After presetting radio channels, you can listen to another channel by pressing the corresponding number key.
3. You can access the following option menus by pressing the left soft key [Options].
  - › **Edit channel:** You can adjust frequency and channel 0.1 MHz at a time using the Left/Right navigation keys and number keys.
  - › **Auto scan:** If you turn "Auto Scan Now?" on, this automatically sets the radio channel. When "Save this Station?" message pops up and you select Yes, the selected frequency will be stored.
  - › **Reset channels:** You can delete all channels you saved.
  - › **Listen via wired headset:** Select this to listen to the radio through the built-in speaker. To turn off the speaker, select "Listen via headset" in the [Options].

## Menu and Options

Your phone offers a set of functions that allow you to customize it. These functions are arranged in menus and sub-menus, accessed via the left and right soft keys. The label on the bottom of the display screen immediately above the soft keys indicates their current function.



Press the left soft key to access the available Menu.

Press the right soft key to access the available Favourites.

## Entering Text

You can enter alphanumeric characters by using the phone's keypad. To change modes, press the [Mode] key.

### T9 Mode

This mode allows you to enter words with only one keystroke per letter. Each key on the keypad has more than one letter. The T9 mode automatically compares your keystrokes with an internal linguistic dictionary to determine the correct word, thus requiring far fewer keystrokes than the traditional ABC mode.

### ABC Mode

This mode allows you to enter letters by pressing the key labeled with the required letter once, twice, three or four times until the letter is displayed.

### 123 Mode (Numbers Mode)

Type numbers using one keystroke per number.

### Symbol Mode

This mode allows you to enter special characters by pressing [Symbol] key.

## Menu tree

1. **Contacts**
  - 1.1 Search
  - 1.2 New contact
  - 1.3 Speed dials
  - 1.4 Copy all
  - 1.5 Delete all
  - 1.6 Memory status
  - 1.7 Information
2. **Messaging**
  - 2.1 New message
  - 2.2 Inbox
  - 2.3 Drafts
  - 2.4 Outbox
  - 2.5 Sent
  - 2.6 Listen voice mail
  - 2.7 Info messages
  - 2.8 Templates
  - 2.9 Settings
3. **Call history**
  - 3.1 All calls
  - 3.2 Missed calls
  - 3.3 Dialed calls
  - 3.4 Received calls
  - 3.5 Call duration
4. **Tools (Case1)**
  - 4.1 Games
  - 4.2 FM radio
  - 4.3 Calculator
  - 4.4 Stopwatch
  - 4.5 Unit Converter
  - 4.6 World clock
5. **Settings**
  - 5.1 Profiles
  - 5.2 Date & Time
  - 5.3 Language
  - 5.4 Display
  - 5.5 Call
  - 5.6 Auto keylock
  - 5.7 Security
  - 5.8 Power save
  - 5.9 Network selection
  - 5.0 Reset settings
  - 5.\* Memory status
6. **Organizer (Case1)**
  - 6.1 Alarm
  - 6.2 Calendar
  - 6.3 Memo
4. **Tools (Case2)**
  - 4.1 Alarm
  - 4.2 Games
  - 4.3 FM radio
  - 4.4 Calendar
  - 4.5 Memo
  - 4.6 Calculator
  - 4.7 Stopwatch
  - 4.8 Unit Converter
  - 4.9 World clock
6. **SIM Services (Case2)**
  - \*Case1: SIM services not there
  - Case2: SIM services are present

## Quick feature reference

This section provides brief explanations of features on your phone.

### Contacts Menu 1

- Search** You can Search for contacts in Phonebook.
  - Note: Instant searching is available by inputting the initial letter of the name you want to search.
- New contact** You can add phonebook entries by using this menu.
- Speed dials** Assign contacts to any of keys [2-9] and [1-9].
- Copy all** You can copy all entries from SIM card memory to Phone memory and also from Phone memory to SIM card memory.
- Delete all** You can delete all entries from SIM card memory or Phone memory.
- Memory status** You can check free space and memory usage.
- Information**
  - › **Service dial numbers:** Access the list of service numbers assigned by service provider safely.
  - › **Own numbers:** You can save and check your own numbers in SIM card.
  - › **Business card:** This option allows you to create your own business card featuring your name, mobile phone number and so on.

### Messaging Menu 2

This menu includes functions related to SMS (Short Message Services).

- New message** This menu includes functions related to SMS (Short Message Services).
- Inbox** You will be alerted when you have received a message.
- Drafts** This menu shows the present message list.
- Outbox** This menu allows to view the message which is about to be sent or has failed to be sent.
- Sent** This menu allows you to view the messages which have already been sent, including time and content.
- Listen voice mail** This menu provides you with a quick way of accessing your voice mailbox (if provided by your network).
- Info messages** Info service messages are text messages delivered by the network to your handset.
- Templates** There are pre-defined messages in the list. You can view and edit the template messages or create new messages.
- Settings** This menu allows you to set features of your network service provider.

### Call history Menu 3

You can check the record of missed, received, and dialed calls only if the network supports the Calling Line Identification (CLI) within the service area. The number and name (if available) are displayed together with the date and time at which the call was made. You can also view call durations.

## Turning Your Phone On and Off

1. Hold down the [END] key until the phone switches on.
2. To switch the phone off, hold down the [END] key until the power-off image displays.

## Making a Call

1. Enter a phone number including the area code.
2. Press the [SEND] key to call the number.
3. When finished, press the [END] key.

## Answering a Call

1. When the phone rings and the phone icon flashes on the screen, press the [SEND] key or the left soft key to answer.
2. If the Any Key menu option (Menu 5.5.2.1), has been set, any key press will answer a call except for the [END] key or the right soft key.
3. End the call by pressing the [END] key.

Note: After the call ends, the phone will go back to standby mode.

## Making an international call

1. Press and hold the [INTL] key for the international prefix. The '+' character automatically selects the international access code.
2. Enter the country code, area code, and the phone number.
3. Press [send] key to call the number.

## How to set the tone

### Ringtone

1. Press the left soft key [Menu] and select [Settings - Profiles] using the up/down navigation keys.
2. Select [Personalise] and choose Ringtones menu.
3. Press the left soft key [OK] and then you can set the desired ringtone.

Tip  
› If you want to change your ringer to vibrate, select Vibrate mode or press and hold the upper navigation key.

### Ringtone/Keypad/Message/Call alert tones and volumes

You can select Ringtone/Keypad/Message/Call alert tones and volumes. You can change the sound that will occur when a key is pressed, or volume level. [Menu - Settings - Profiles - Personalise]

## Call history Menu 3 (Continued)

<b>All calls</b>	Displays all the lists of three types (Received/Dialed/Missed calls) by time.
<b>Received calls</b>	This option lets you view the last 10 incoming calls.
<b>Dialled calls</b>	This option lets you view the last 10 outgoing calls (called or attempted).
<b>Missed calls</b>	This option lets you view the last 10 unanswered calls.
<b>Call duration</b>	Allows you to view the duration of your incoming and outgoing calls.

## Tools Menu 4

<b>Games</b>	
<b>FM radio</b>	
<b>Calculator</b>	This contains the standard functions such as +, -, x, ÷: <b>Addition, Subtraction, Multiplication and Division.</b>
<b>Stopwatch</b>	Stopwatch is available just as common stopwatches we see and use in daily life.
<b>Unit Converter</b>	This converts any measurement into a unit you want.
<b>World clock</b>	Allows you to determine the current time in another time zone or country.

## Guidelines for safe and efficient use (Continued)

### Electronic devices

All mobile phones may get interference, which could affect performance.

- Do not use your mobile phone near medical equipment without requesting permission. Avoid placing the phone over a pacemaker, i.e. in your breast pocket.

### Road safety

Check the laws and regulations on the use of mobile phones in the areas when you drive.

- Do not use a hand-held phone while driving.
- Use a hands-free kit, if available.
- Pull off the road and park before making or answering a call if driving conditions so require.

### Blasting area

Do not use the phone where blasting is in progress. Observe restrictions, and follow any regulations or rules.

## Network service

The wireless phone described in this guide is approved for use on the GSM 900, DCS 1800 network.

- Dualband is a network dependent feature. Check with your local service provider if you can subscribe to and use this feature.

- A number of features included in this guide are called Network Services. These are special services that you arrange through your wireless service provider. Before you can take advantage of any of these Network Services, you must subscribe to them through your service provider and obtain instructions for their use from your service provider.

## Settings Menu 5

You can set the following menus for your convenience and preferences.

<b>Profiles</b>	You can adjust and customize the phone tones for different events, environments or caller groups.
<b>Date &amp; Time</b>	You can set functions relating to the date and time.
<b>Language</b>	You can change the language for the display texts in your phone. This change will also affect the Language Input mode.
<b>Display</b>	You can change settings for the phone display.
<b>Call</b>	You can set the menu relevant to a call.
<b>Auto keypad</b>	When this feature is enabled, the phone keypad is locked.
<b>Security</b>	This menu allows you to set the phone safely. <ul style="list-style-type: none"><li><b>PIN code request</b> : You can set the phone to ask for the PIN code of your SIM card when the phone is switched on.</li><li><b>Phone lock</b> : You can use a security code to avoid unauthorized use of the phone.</li><li><b>Call barring</b> : The Call barring service prevents your phone from making or receiving a certain category of calls. This function requires the call barring password.</li><li><b>Fixed dial number (SIM dependent)</b>: You can restrict your outgoing calls to selected phone numbers. The numbers are protected by your PIN2 code. The numbers you wish to allow access to once this service has been enabled, must be added to the contacts after enabling Fixed dial number.</li><li><b>Lost Mobile Track</b> : This Feature of this phone allow provide you with ability to have a tracking system in place for mobile incase you loose mobile or misplace it.</li></ul>

## Guidelines for safe and efficient use (Continued)

### Potentially explosive atmospheres

Do not use the phone at a refueling point. Do not use near fuel or chemicals.

### In aircraft

Wireless devices can cause interference in aircraft.

- Turn off your mobile phone before boarding any aircraft.

### Children

Keep the phone in a safe place out of children's reach. It includes small parts which if detached may cause a choking hazard.

### Emergency calls

Emergency calls may not be available under all cellular networks. Therefore, you should never depend solely on the phone for emergency calls. Check with your local service provider.

## Troubleshooting

This chapter lists some problems that you might encounter while using your phone. Some problems require that you call your service provider, but most of problems you encounter are easy to correct yourself.

Message	Possible causes	Possible Corrective measures
SIM error	There is no SIM card in the phone or you may have inserted it incorrectly.	Make sure that the SIM card is correctly inserted.
No connection to the network	Signal weak Outside GSM network	Move higher to a window or open space. Check service provider coverage map.
Codes do not match	When you want to change a security code you have to confirm the new code by entering it again. The two codes that you have entered do not match.	Contact your Service Provider.
Function cannot be set	Not supported by Service Provider or registration required	Contact your Service Provider.
Calls not available	Dialling error New SIM card inserted Charge limit reached	New network not authorised. Check for new restrictions. Contact Service Provider or reset limit with PIN 2.
Phone cannot be switched on	On/Off key pressed too briefly Battery empty Battery contacts dirty	Press On/Off key for at least two seconds. Charge battery. Check charging indicator in the display. Clean contacts.

## Settings Menu 5 (Continued)

<b>Security (Continued)</b>	<b>Setting LMT ON [Menu 5.7.5]</b> <ul style="list-style-type: none"><li>Select Lost Mobile track from Security Settings</li><li>Enter Default LMT code. - Select Set LMT - Select ON, press OK</li></ul> <b>Note</b> <ul style="list-style-type: none"><li>In case you want to use your phone with some other SIM card, make sure to set the LMT feature OFF</li><li>It is recommended to enter the pre-defined number with the country code ( e.g. for INDIA +91 followed by mobile number)</li><li>Default LMT code is "0000"</li></ul> <b>Change codes</b> : PIN is an abbreviation of Personal Identification Number to prevent use by unauthorized persons. You can change the access codes: Security code, PIN code, PIN2 code , LMT Code.
<b>Power save</b>	If you set this to On, you can save the power when you are not using the phone.
<b>Network selection</b>	You can select a network that will be registered either automatically or manually. Usually, the network selection is set to Automatic.
<b>Reset settings</b>	You can initialize all setting values as defaults. You need a Security code to activate this function.
<b>Memory status</b>	You can check free space and memory usage of each repository.

## Organizer Menu 6

<b>Alarm</b>	Allows you to set one of three alarms. The current time is displayed at the top of the screen when you select an alarm to set. At the alarm time, the Alarm icon will be displayed on the LCD screen and the alarm will sound.
<b>Calendar</b>	You can check track of daily or monthly schedules.
<b>Memo</b>	You can create a list of tasks.

## Guidelines for safe and efficient use (Continued)

### Battery information and care

- You do not need to completely discharge the battery before recharging. Unlike other battery systems, there is no memory effect that could compromise the battery's performance.
- Use only LG batteries and chargers. LG chargers are designed to maximize the battery life.
- Do not disassemble or short-circuit the battery pack.
- Replace the battery when it no longer provides acceptable performance. The battery pack may be recharged hundreds of times before it needs to be replaced.
- Do not expose the battery charger to direct sunlight or use it in high humidity, such as the bathroom.
- Risk of explosion if battery is replaced by an incorrect type.
- Dispose off used batteries according to the manufacturer's instructions.

Message	Possible causes	Possible Corrective measures
	Battery totally empty	Charge battery. Make sure the ambient temperature is right, wait for a while, and then charge again.
	Temperature out of range	
	Contact problem	Check power supply and connection to the phone. Check the battery contacts, clean them if necessary.
Charging error	No mains voltage	Plug in to a different socket or check voltage.
	Charger defective	If the charger does not warm up, replace it.
	Wrong charger	Only use original LG accessories.
	Battery defective	Replace battery.
Phone loses network	Signal too weak	Reconnection to another service provider is automatic.
Number not permitted	The Fixed dial number function is on.	Check settings.

## Guidelines for safe and efficient use

Please read these simple guidelines. Ignoring them may be dangerous or illegal. Further detailed information is given in this manual.

### Warning

- For your safety, use ONLY specified ORIGINAL batteries and chargers.
- Switch off the phone in any area where required by special regulations, e.g. in a hospital where it may affect medical equipment.
- Batteries should be disposed off in accordance with relevant legislation.

### Product care and maintenance

**WARNING!** Only use batteries, chargers and accessories approved for use with this particular phone model. The use of any other types may invalidate any approval or warranty applying to the phone, and may be dangerous.

- Do not disassemble this unit. Take it to a qualified service technician when repair work is required.
- The unit should be kept away from heat sources such as radiators or cookers.
- Use a dry cloth to clean the exterior of the unit. (Do not use any solvents.)
- Do not keep the phone next to credit cards or transport tickets; it can affect the information on the magnetic strips.

## Guidelines for safe and efficient use (Continued)

### Exposure to radio frequency energy

Radio wave exposure and Specific Absorption Rate (SAR) information

This mobile phone model KG288 has been designed to comply with applicable safety requirement for exposure to radio waves. This requirement is based on scientific guidelines that include safety margins designed to ensure safety of all persons, regardless of age and health.

- The radio wave exposure guidelines employ a unit of measurement known as the Specific Absorption Rate, or SAR. Tests for SAR are conducted using standardized methods with the phone transmitting at its highest certified power level in all used frequency bands.
- While there may be differences between the SAR levels of various LG phone models, they are all designed to meet the relevant guidelines for exposure to radio waves.
- The SAR limit recommended by the international Commission on Non-Ionizing Radiation Protection (ICNIRP) is 2W/kg averaged over ten (10) gram of tissue.
- The highest SAR value for this model phone tested by DASY4 for use at the ear is 0.932 W/kg (10g).
- SAR data information for residents in countries/regions that have adopted the SAR limit recommended by the Institute of Electrical and Electronics Engineers (IEEE) is 1.6 W/kg averaged over one (1) gram of tissue.

## Technical Data

### General

- Product name** : KG288
- System** : GSM 900 / DCS 1800

### Ambient Temperatures

- Max.** : +55°C, Charging (+45°C)
- Min** : -10°C

### Battery Specification

- Type** : 750mAh, Li-ion
- Talk Time\*** : Upto 3 hrs. 30 min (PL : 7)
- Standby Time\*** : Upto 350 hrs. (PG : 9)

Note!

- Variation in operation time may occur depending on SIM card, network condition, usage style, usage setting and environment.

Declaration of Conformity		
<b>Supplier Details</b>		
Name	LG Electronics Inc	
Address	1 LG Twin Tower 30, Yeouido-dong, Yeongdeungpo-gu Seoul, Korea 150-721	
<b>Product Details</b>		
Product Name	G288 900/DCS 1800 Dual Band Terminal Equipment	
Model Name	KG288K288	
Trade Name	LG	
<b>Applicable Standards Details</b>		
RATTE Directive 1999/5/EC		
EN 301 488-01 / EN 301 488-07 / EN 301 488-01 / EN 301 488-07 / EN 301 488-01 / EN 301 488-07 / EN 301 488-01 / EN 301 488-07		
<b>Supplementary Information</b>		
The conformity to above standards is verified by BART.		
<b>Declaration</b>		
I hereby declare under our sole responsibility that the product mentioned above to which this declaration relates complies with the above mentioned standards and Directives	Name	Issued Date
	Jin Sang, Kim / Director	07.11.2007
LG Electronics Logistics and Services B.V. Valkensloot 16, 1827 AE Almere, The Netherlands Tel: +31 - 36-547-8040, e-mail: wmls@lg.com		
Signature of representative		