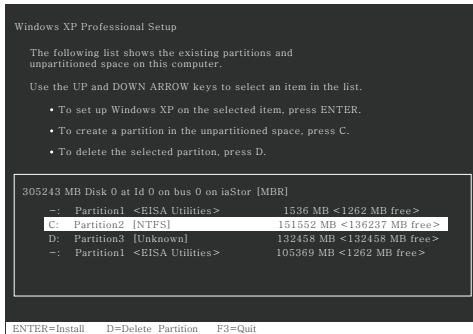


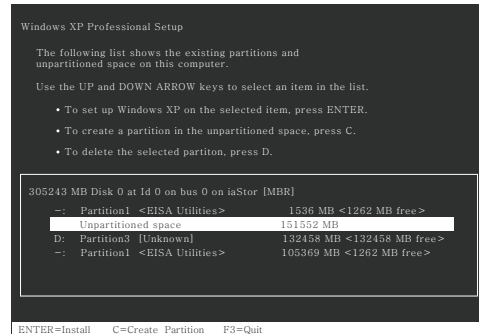
Recovering the System with LG Recovery CD(XP Pro CD)

- ❖ The system recovery feature may not be available for some models.
- ❖ To start recovery, you need an ODD(Optical Disk Drive) on your system.(External ODD is an optional part.)
- ❖ For more details about system recovery, select LG Intelligent Update CD > Ez User's Guide.

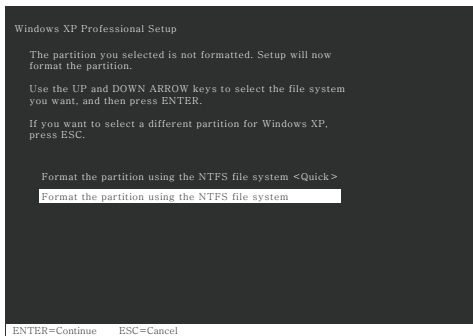
1. Before starting recovery, make a back copy of important data.
2. Insert the Recovery CD into the ODD(Optical Disk Drive).
3. When the "Press any key to boot from CD..." message appears, press [Enter].
4. To install the O/S , take the following steps:



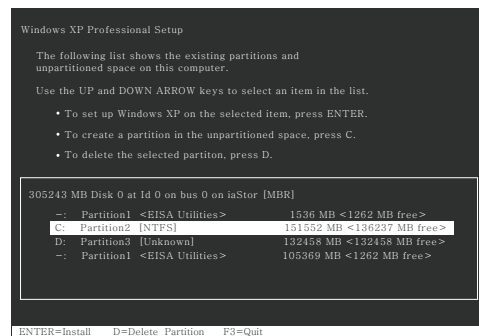
- ① Select the partition ("C:" in this example) where Windows is installed, and press [D] to delete the existing O/S.
- ❖ To delete the "EISA Utilities" partition (Vista recovery partition), press [D].



- ② Select "Unpartitioned space" and press [C].



- ③ Format the partition where you wish to install the O/S.(Normal format recommended)



- ④ Press [Enter] to install Windows XP.

5. Follow the instructions displayed on the screen to complete Windows XP installation.
6. After installation, remove the Recovery CD from the ODD(Optical Disk Drive).
7. Follow the instruction displayed on the screen to register the O/S.
8. When Windows has been installed, install necessary drivers and other applications with the provided LG Intelligent Update CD.

▶ NOTE

- ❖ Since Windows XP does not support Intel Turbo Memory, it is indicated by a yellow exclamation mark on the Device Manager (Yellow exclamation mark: PCI memory controller). It does not mean the system has a problem. The Intel Turbo Memory becomes available if Windows VISTA is installed.
- ❖ To install drivers and applications, insert the LG Intelligent Update CD into the ODD and take the following steps:
 1. Install the chipset driver.
 2. Install the Realtek Audio driver.
 3. Install the video driver.
 4. Install other needed drivers and applications.
- ❖ To downgrade the O/S from Windows Vista Business to Windows XP, on (BIOS Setup Utility) set Switchable Graphics Mode to External VGA only.
-Switchable Graphics feature becomes available only on Windows Vista.

