

Software Upgrade Guide

< Contents >

- Notice
- File Copy
- USB Download



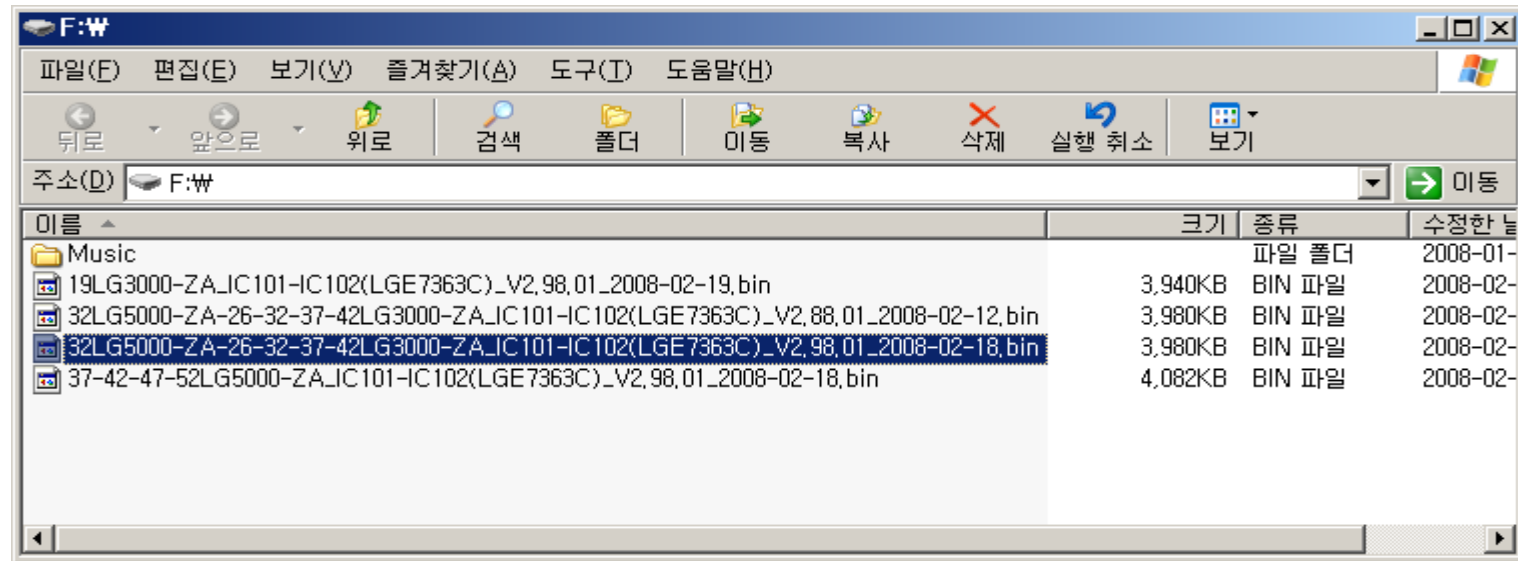
1. Notice

✓ Notice

- ✓ A few USB devices may not be compatible with the TV. **If the USB device isn't compatible, you use another USB device.**
- ✓ The USB download works only on the antenna input source (DTV or ATV). **It doesn't work on the external input source** (RGB, Component, HDMI, ...).
- ✓ **It may not work on the UK channel with MHEG** (BBC, ...). If it doesn't work on the channel with MHEG, you take off the antenna signal or change to ATV channel, and retry the download.

2. File copy

- ✓ Copy the download file to the **root folder** of the USB device.
- ✓ The TV system searches only the root folder to find the download files.
- ✓ If there are many other files in the root folder, it takes a long time to find the download file.

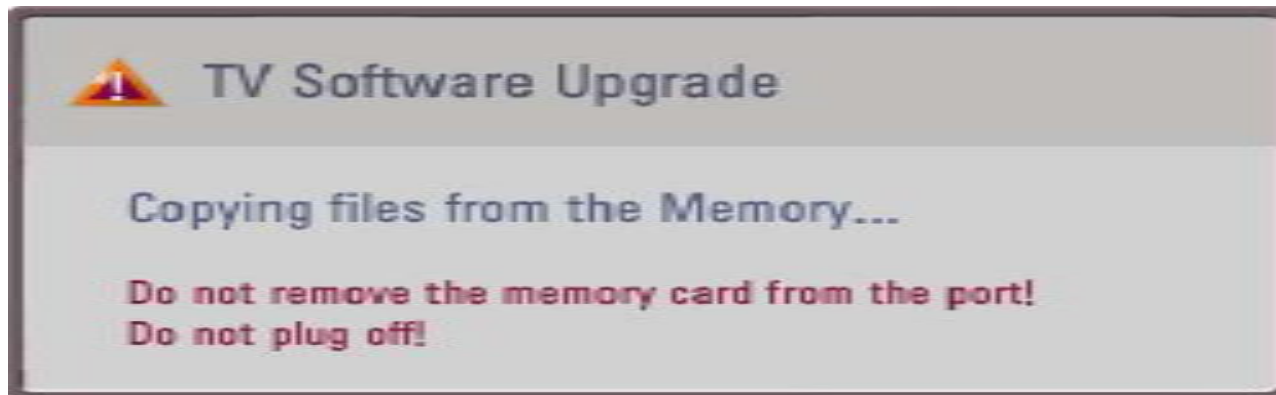


3. USB Download

- ✓ Insert the USB device into the USB port of the TV.

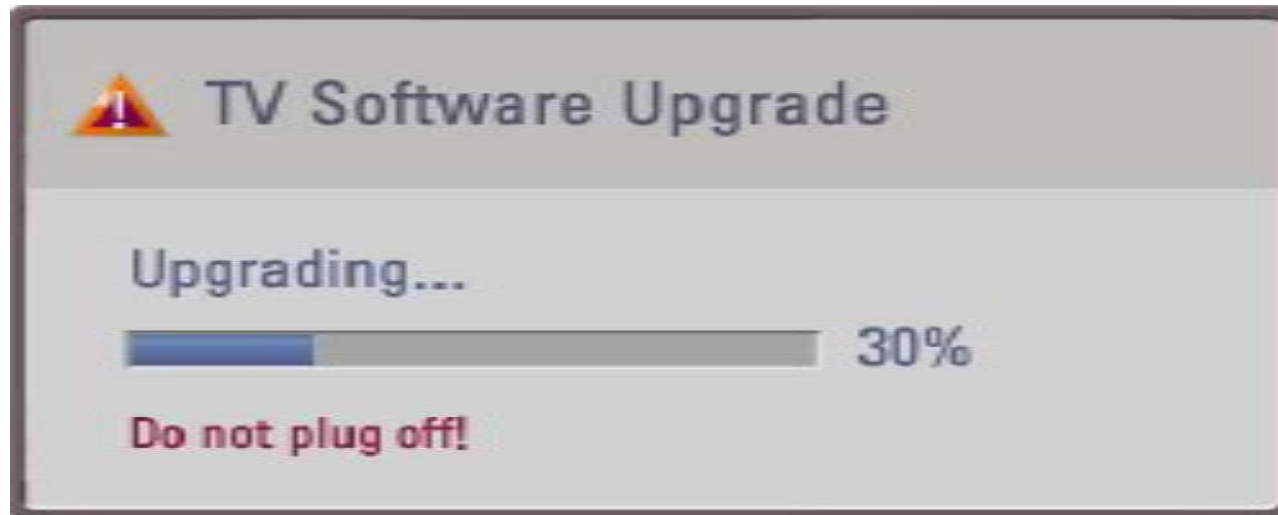


- ✓ If the TV finds the **same model name** and **new version** file, it will display this message and start the upgrade automatically.
 - ✓ If there are only the same or lower version files in the USB device, you can't use the automatic mode.
- ✓ **Don't remove the USB device** while this message is displayed.



3. USB Download

- ✓ After copying the download file from USB device, the TV displays this progressive message to update new S/W to FLASH memory.
- ✓ If some problems happen during upgrade, the TV will display the error message and reboot to return to the previous version.
- ✓ When this message is displayed, **you can remove the USB device**, but **don't turn off the power**.
 - ✓ Especially, **you never turn off the power before 20%**. It brings the system crash.



3. USB Download

- ✓ If the upgrade is completed, this message is displayed.
- ✓ The TV will restart automatically in 5 seconds.
- ✓ After the TV is rebooted, **you can check the new version number** on the Diagnostics menu.

