

# 1. Install the Pentouch Program

1 Warning disconnect USB dongle

2 Select language



3 Preparing install



4 Click "Next" in Start to install Pentouch TV



7 Finish Install Pentouch TV



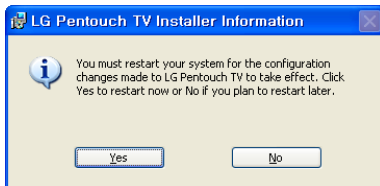
6 Installing Pentouch TV



5 Ready to Install Pentouch TV

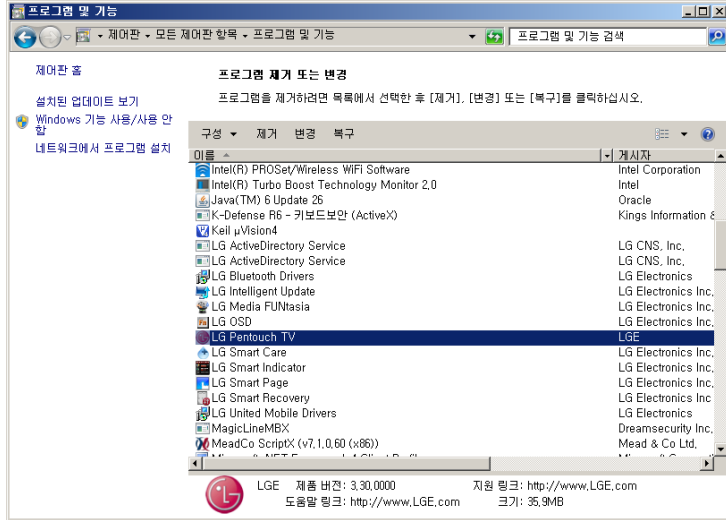


8 Restart PC



## 2. Check the installation status.

- 1 Currently installed programs  
Check the LG Pentouch Multi-touch Driver or Pentouch TV



- 2 Check USB Dongle Driver in Device Manager  
-LG Pentouch Multi-touch Driver (MultiTouch)  
-LG Pentouch Multi-touch Driver (BUS)  
-LG Pentouch Multi-touch Driver (Dongle)  
the Dongle Driver should be displayed when connected USB Dongle

