

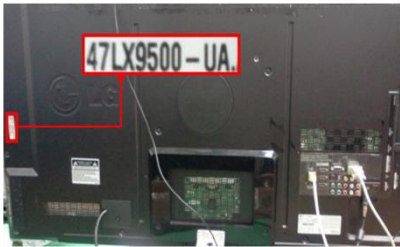
# Software Upgrade Guide

## ◆ Notice

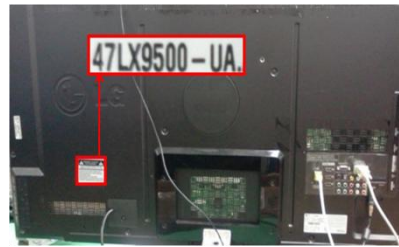
1. Check correctly the Full model name of TV Set.  
Ex) 47LX9500-UA : The Full model name must include “-UA”.
2. Check the application Full model name and purpose of software upgrade after click the software name on the website.
3. Do not unplug the TV power cord during software upgrading.

## 1. Method to verify the Full model name of TV Set .



Method①. Check label of TV Set (Side or Rear).

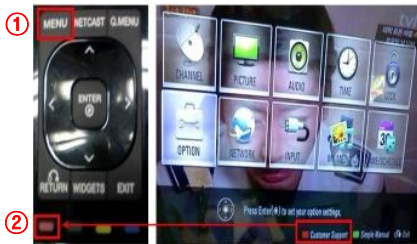


or

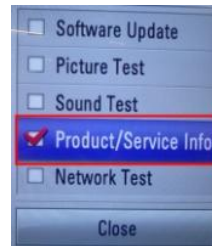


Method②. Check the Menu.

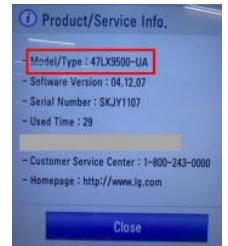
- 1) Press [MENU] key of remote control.
- 2) Press  (Red) key of remote control.  
 (Red) key is “Customer Support”.



- 3) Select the “Product/Service Info.”



- 4) Check the “Model/Type”



Method③. Check the SETUP.

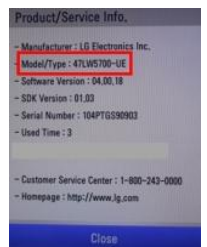
- 1) Press [Home] key of remote control.
- 2) Select the “SETUP”.



- 3) Move to the ”SUPPORT”
- 4) Select the “Product/Service Info.”

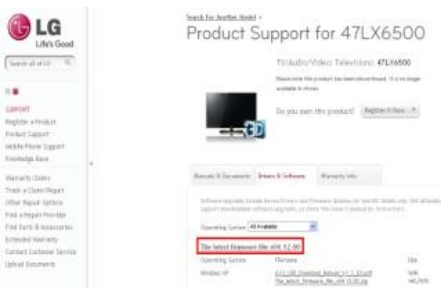


- 5) Check the “Model/Type”



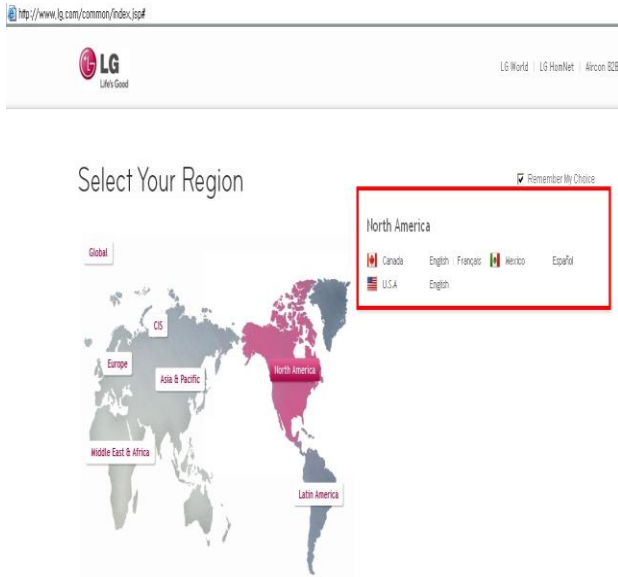
## 2. Method to verify the Full model name of TV Set and purpose of software upgrade on the website.

- ① Click the “Drivers & Software”.
- ② Click the Software name.
- ③ Check the Full model name (Ex. 47LX9500-UA) and purpose of Software upgrade.



# 1 Searching the software.

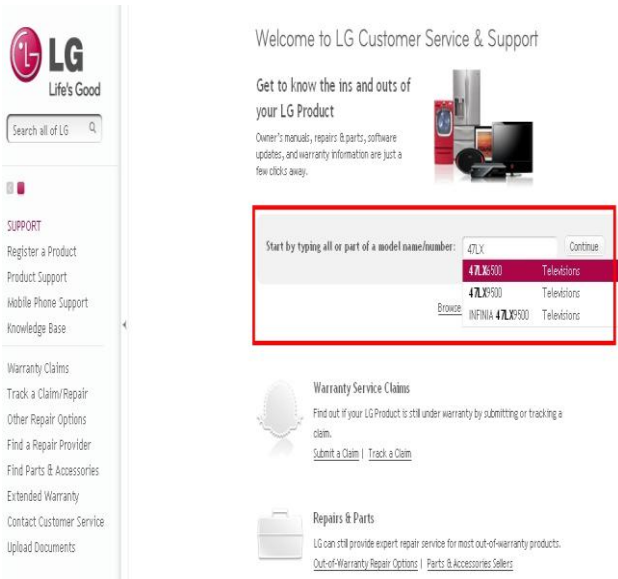
① Select your country after connecting to [www.lg.com](http://www.lg.com).



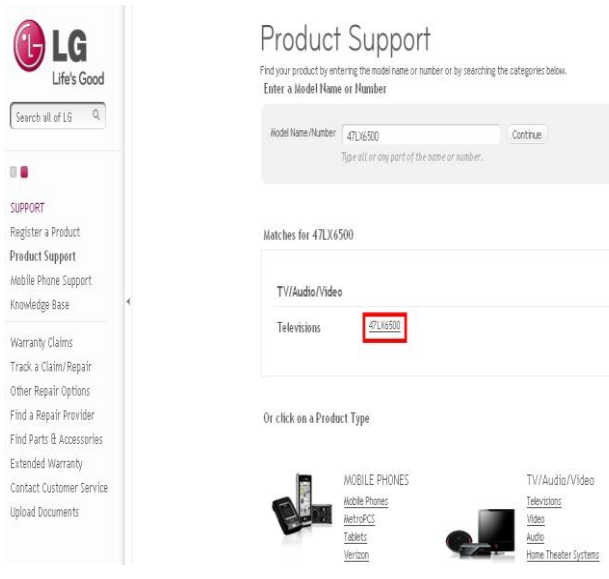
② Move to the "Support".



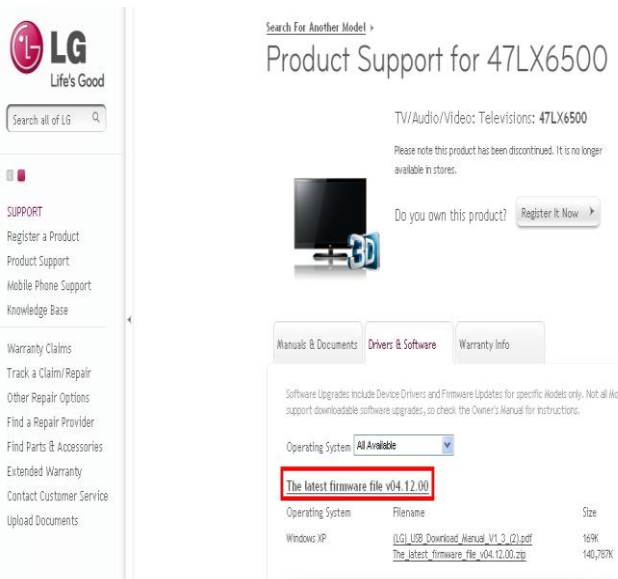
③ Fill in the your Model name.  
(Ex. 47LX9500(Fill Model name except "-UA").)  
④ Click the "Continue".



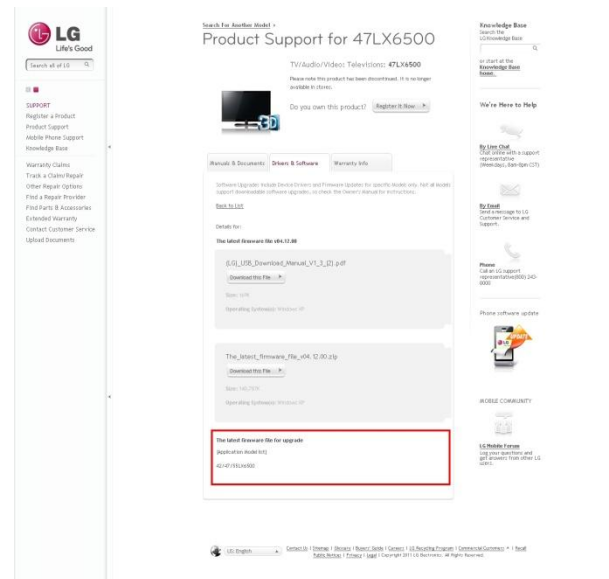
⑤ Click the Model name.



⑥ Click the "Drivers & Software".  
⑦ Click the Software name.

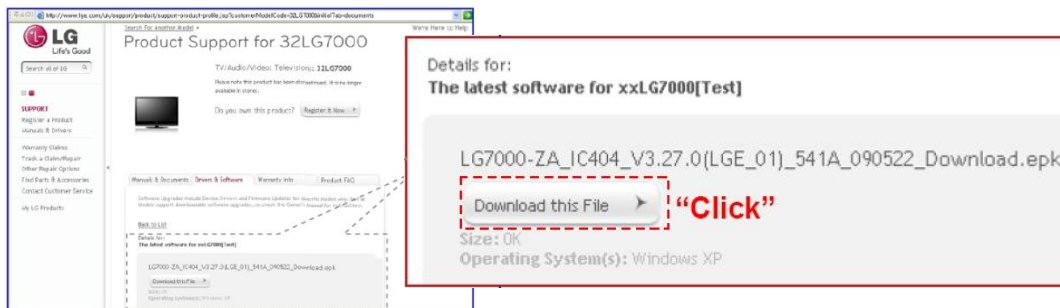


⑧ Check the Full model name (Ex. 47LX9500-UA) and purpose of software upgrade.



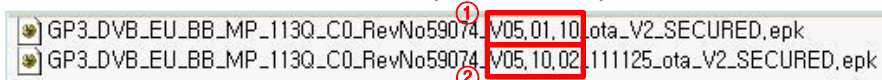
## 2 Downloading the software file to the USB Memory device. Running the software Upgrade.

① Click the “Download this File” on the website to save it to the PC.



② Unzip the software file.

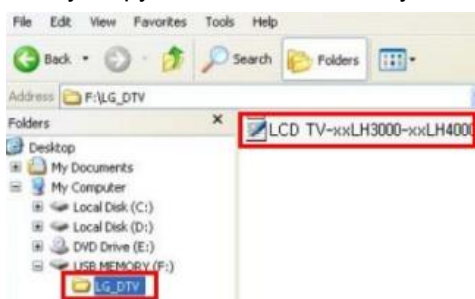
③ If there are two files exist in the compressed file, update lower version first and update higher version later.



1) Insert the USB memory device into USB Port of the PC.

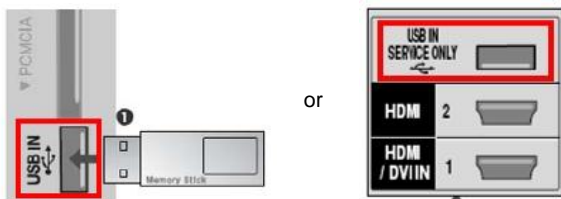
2) Make a folder in USB Memory device. **Folder name must be “LG\_DTV”.**

3) Firstly, copy lower version file only to “LG\_DTV” folder in USB memory device .



4) Insert the USB memory device into USB Port of the TV.

■ Position of USB port : Side or Rear



You may see one of picture below.

**TV Software Upgrade**

Current Ver. : Ver. **3.07.12**  
Update Ver. : Ver. **5.01.10**

File : Mvpa-62PX3D-08-RELEASE-6a0193.epk

To start upgrading your TV Set, please follow the procedures:  
1. Press an arrow key → on your remote to reach START on the screen.  
2. Press ENTER key ⏏ on your remote to start downloading.

If you do not want to download the upgrade file, please press the arrow key ←. Then, press the ENTER key ⏏ on your remote.

Sometimes software upgrade may cause the reset of your customized TV menu.

**Start**      Cancel

**TV Software Update**

Current Ver. : Ver. **3.07.12**  
Update Ver. : Ver. **3.07.12**

File : LM1\_DVB\_EU\_MP\_RevNo3426\_V02.00.03\_usb\_V2\_SECURED

Your current version is the same as update version.  
You do not need update.

**TV Software Update**

Current Ver. : Ver. **3.07.12**  
Update Ver. : Ver. **3.06.01**

File : LM1\_DVB\_EU\_MP\_RevNo3426\_V02.00.02\_usb\_V2\_SECURED

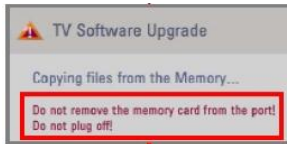
Your current version is higher than update version.  
You do not need update.

Update it. Press “Start”

TV software current version is higher or same version.  
You don't need to update the version.

※ A few USB memory device may not be compatible with the TV, in that case you use another USB device.

If software upgrade execute, below message will appear on TV.



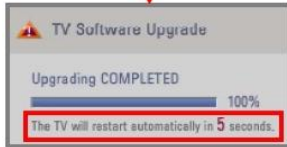
Copying the new version software file from USB Memory device to the TV system memory.

※ **Don't remove the USB Memory device while this message is displayed.**  
Do not unplug the TV power cord while this message is displayed.



Running the software upgrade.

※ **Do not unplug the TV power cord while this message is displayed.**



If the upgrade is completed, this message is displayed.

And the TV will restart automatically in 5 seconds.

5) Secondly, copy higher version file to "LG\_DTV" folder in USB memory device.

6) Repeat 4)

7) Update has completed.

※ Just remember. Update lower version first and update higher version later.