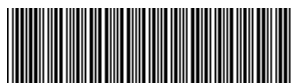


OWNER'S MANUAL

FILTERED WATER DISPENSER

**Read this owner's manual thoroughly before operating the appliance
and keep it handy for reference at all times.**

WD510AS WD510AW



MFL66990820
Rev.01_070317

www.lg.com/au

Copyright © 2016-2017 LG Electronics Inc. All Rights Reserved.

TABLE OF CONTENTS

This manual is produced for a group of products and may contain images or content different from the model you purchased.


This manual maybe subject to revision by the manufacturer.


SAFETY INSTRUCTIONS	03
Important Safety Instructions	04
INSTALLATION.....	09
Notes for Installation.....	09
Notes for Power Supply Requirements	09
OPERATION	10
Parts and Functions.....	10
Notes for Operation	11
Using the Control Panel.....	12
Notes for Using the Control Panel	14
Using the Water Tray	14
MAINTENANCE.....	15
Cleaning	15
Maintaining the Filter	16
Using the Smart Function	17
TROUBLESHOOTING	18

SAFETY INSTRUCTIONS

The following safety guidelines are intended to prevent unforeseen risks or damage from unsafe or incorrect operation of the appliance.

The guidelines are separated into 'WARNING' and 'CAUTION' as described below.

 This symbol is displayed to indicate matters and operations that can cause risk. Read the part with this symbol carefully and follow the instructions in order to avoid risk.

 **WARNING** - This indicates that the failure to follow the instructions can cause serious injury or death.

 **CAUTION** - This indicates that the failure to follow the instructions can cause the minor injury or damage to the product.

WARNING

To reduce the risk of explosion, fire, death, electric shock, injury or scalding to persons when using this product, follow basic precautions, including the following:

Children in the Household

This appliance is not intended for use by persons (including children) with reduced physical, sensory or mental capabilities, or lack of experience and knowledge, unless they have been given supervision or instruction concerning use of the appliance by a person responsible for their safety. Children should be supervised to ensure that they do not play with the appliance.

Important Safety Instructions

WARNING

To reduce the risk of explosion, fire, death, electric shock, injury or scalding to persons when using this product, follow basic precautions, including the following:

Installation

- This appliance should only be transported by two or more people holding the appliance securely.
- Ensure that the outlet socket is properly earthed, and that the earth pin on the supply cord is not damaged or removed from the plug. For more details on earthing, inquire with your distributor, supplier or dealer.
- This appliance is equipped with a power cord having an equipment-earthing conductor and an earthing power plug. The power plug must be plugged into an appropriate outlet socket that is installed and grounded in accordance with all local codes and ordinances.
- If the power cord is damaged or the holes of the outlet socket are loose, do not use the power cord and contact an authorized service centre.
- Do not plug the appliance into multiple outlet sockets, a power board, or an extension power cable.
- Do not plug the appliance into a multi socket adapter which does not have a power cable(mounted).
- Do not modify or extend the power cord.
- Avoid using any extension cords or double adaptor. The appliance should be connected to a dedicated power line which is separately fused.
- Do not use a multi socket outlet which is not properly earthed(portable). Upon using a properly-earthed multi socket outlet (portable), use a product with the current capacity of the power code rating or higher. Failure to do so may result in electric shock or fire due to the heat of multi socket outlet. The power may be shut off when the circuit breaker is operated.
- Install the appliance in a place where is easy to unplug the power plug of the appliance.
- Be careful not to point the power plug up or let the appliance lean against the power plug.
- Install the appliance on a firm and level floor.
- Do not install the appliance in a damp and dusty place. Do not install or store the appliance in any outdoor area, or any area that is subject to weathering conditions such as direct sunlight, wind, rain, or temperatures below freezing.
- Do not connect a plug adapter or other accessories to the power plug.

- Do not place the appliance in direct sunlight or expose it to the heat from heating appliances such as stoves or heaters.
- Be careful not to expose the rear of the appliance when installing.
- Do not install the appliance near fire or flammable materials (ether, benzene, LP gas, etc).
- When installing the drain hose, attach it deep inside the drain using compressed rubber (applicable to models with the hot water function only).

Operation

- In case of flood, disconnect the power plug and contact your distributor, supplier or dealer.
- Unplug the power plug during a severe lightening or thunderstorm or when not in use for a long period of time.
- Do not touch the power plug or the appliance controls with wet hands.
- Do not bend the power cable excessively or place a heavy object on it.
- If water penetrates electrical parts of the appliance, disconnect power plug and contact your distributor, supplier or dealer.
- Do not plug and unplug the power plug repeatedly.
- Do not place hands or metallic objects inside the cover or heat releasing grille on the back.
- Do not apply excessive force or impact to the back cover of the appliance.
- Do not place heavy or fragile objects, containers filled with liquid, combustible substances, flammable objects(such candles, lamps, etc.), or heating devices(such as stoves, heaters, etc.) on the appliance.
- If there is a gas leakage (isobutane, propane, natural gas, etc.), do not touch the appliance or power plug and ventilate the area immediately. This appliance uses a very eco-friendly gas (isobutane, R600a) as the refrigerant. Although it uses a small amount of the gas, it is still combustible gas. Gas leakage during appliance transport, installation or operation can cause fire, explosion or injury if sparks are caused.
- Do not use or store flammable or combustible substances (ether, benzene, alcohol, chemical, LPG, combustible spray, insecticide, air freshener, cosmetics, etc.) near the appliance.
- Immediately unplug the power plug and contact your distributor, supplier or dealer if you detect a strange sound, odour, or smoke coming from the appliance.
- If water is leaking from the inside of the appliance or water has collected near the appliance, close the water supply valve, unplug the power plug, and contact your distributor, supplier or dealer.
- Do not move the appliance while the appliance is plugged in.

Maintenance

- Disconnect the power cord before cleaning the appliance or replacing the filter.
- Securely plug the power plug in to the outlet socket after completely removing any moisture and dust.
- Never unplug the appliance by pulling on the power cable. Always grip the power plug firmly and pull straight out from the outlet socket.
- Do not spray water or inflammable substances(toothpaste, alcohol, thinner, benzene, flammable liquid, abrasive, etc.) over the interior or exterior of the appliance to clean it.
- Do not clean the appliance with brushes, cloths or sponges with rough surfaces or which are made of metallic material.
- Only a qualified service personnel from your distributor, supplier or dealer should disassemble, repair, or modify the appliance. Contact your distributor, supplier or dealer if you move and install the appliance in a different location.

Disposal

- Dispose of all packaging materials (such as plastic bags and styrofoam) away from children. The packaging materials can cause suffocation.

Technical safety

- Keep ventilation openings, in the appliance enclosure or in the built-in structure, clear of obstruction.
- The refrigerant and insulation blowing gas used in the appliance require special disposal procedures. Consult with your dealer or supplier or a similarly qualified person before disposing of them.
- This appliance contains a small amount of isobutane refrigerant (R600a), natural gas with high environmental compatibility, but it is also combustible. When transporting and installing the appliance, care should be taken to ensure that no parts of the refrigerating circuit are damaged.
- Refrigerant leaking out of the pipes could ignite or cause an explosion.
- If a leak is detected, avoid any naked flames or potential sources of ignition and air the room in which the appliance is standing for several minutes. In order to avoid the creation of a flammable gas air mixture if a leak in the refrigerating circuit occurs, the size of the room in which the appliance is used should correspond to the amount of refrigerant used. The room must be 1 m² in size for every 8 g of R600a refrigerant inside the appliance.
- The amount of refrigerant in your particular appliance is shown on the identification plate inside the appliance.
- Never start up an appliance showing any signs of damage. If in doubt, consult your dealer.

CAUTION

To reduce the risk of minor injury to persons, malfunction, or damage to the product or property when using this product, follow basic precautions, including the following:

Installation

- Do not tilt the appliance to pull or push it when transporting.
- Connect the water pipe of the appliance to potable water only. Water other than potable water can increase the risk of exposure to disease. Other types of water can reduce the appliance life or cause malfunctions.
- Hot water may splatter, so install the drain hose carefully to the drain.
- Make sure not to get a body part such as a hand or foot stuck while moving the appliance.

Operation

- Prevent animals from nibbling on the power cable or water hoses.
- Supervise a child or a person with poor cognitive skills to ensure they use the appliance safely.
- Do not damage the pipes of the refrigerant circuit.
- Replace the filter with a LG standard filter periodically according to the replacement period. Older filters can multiply bacteria or change the taste of the water. The filter replacement period varies according to the usage, place of usage, season, and water quality.
- Be sure to use a cup or container that has a handle when you use the hot water function, and use an adequately sized vessel when dispensing the water volume amounts of 500ml and 1000ml. (Only applicable to a model with hot water function)
- Take care against the possibility of damaging the pipe (inlet, outlet) in order to prevent water leakage.
- If the water tray of the appliance protrudes from a desk or table, do not place any article on top of the water tray.
- Do not allow pets, or any persons to hang from or climb on the appliance.

Appliance Usage Range

This appliance is intended to be used in households and similar applications only. It should not be used for commercial, or catering purposes, or in any mobile application such as a caravan or boat.

INSTALLATION

Notes for Installation

- Keep a distance of over 10 cm between the back and sides of the appliance and the wall for proper ventilation. Not doing so can cause malfunctions.
- When connecting the water hose, do not connect it to the hot water tap. Doing so may cause malfunctions.
- Check the pipe and hose connection for leaks. Water can leak and cause electric shock or injury.
- When transporting the appliance, do not tilt the appliance over 30 degrees. Doing so can cause malfunctions.
- Install the appliance in an indoor place with a surrounding temperature of over 5 °C and less than 35 °C. Not doing so can cause malfunctions.
- Avoid installing the filtered water dispenser in a place with an uneven ground, a large amount of moisture, direct sunlight, dust, and direct water splashing.
- Connect the appliance to a drinking water tap with a water pressure of 147-780 kPa (1.5-7.9 kgf/cm²). Not doing so may cause malfunctions.
- Water should fall through the hot water tank pipe, and this pipe should be left open.

Notes for Power Supply Requirements

This appliance is only for 230 V - 240 V. Make sure to plug it into a 230 V - 240 V 15 Amp earthed mains outlet.

Do not connect any other electronic appliance or device to the same power outlet.

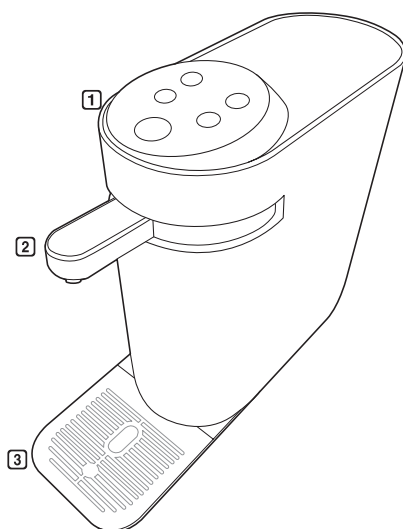
The appliance must be earthed to prevent any electrical leakage or electrical shock.

This product has an earthing pin on the mains plug and must not be removed. If the power outlet has no earthing plug, then it must not be used.

The mains plug should only be plugged into an earthed and fuse protected mains outlet.

OPERATION

Parts and Functions



1 Control Panel

This allows you to select the volume of hot water, cold water and ambient water and indicates the filter replacement period.

2 Moveable Water Outlet

This feature allows the user to swivel the outlet to their desired position.

3 Water tray

This is the area where a cup, water bottle or container can be placed and used.

- The appearance or components of the product may differ from model to model.

Notes for Operation

- Open the water supply valve. The filtered water dispenser operates normally when water is supplied properly at a consistent pressure that is within the operating requirement.
- When the hot water and cold water temperature icons are turned off, check if the power supply has been lost due to power failure or other reasons.
- It is very important to replace the filter periodically in order to drink clean water. When using an expired filter, the performance of the filtered water dispenser can deteriorate. Always abide by the filter replacement period.
- If the appliance has not been used for a long period of time, discharge cold water, Ambient water, and hot water for 10 minutes each before using, and then use. Old water can multiply bacteria or change the water taste.
- Do not use filtered water for replacing water in a humidifier or fishbowl. Leaving filtered water as it is for a long period of time can cause the water bacteria to multiply.
- Use the appliance only after closing the appliance cover completely. Otherwise, insects or other foreign substances may get in.
- Do not force the water dispenser outlet up or down or past its left and right swivel limits. Doing so can cause damage to the water outlet.
- When heating or freezing water, white sediment may appear due to minerals in water. These minerals are harmless to humans.
- Water may remain inside the appliance due to the inspection process carried out while manufacturing the appliance. This is not a sign of the appliance having been used previously and is safe to use.
- Do not use a mechanical device other than any, and if recommended for improving the performance of the filtered water dispenser. Doing so may cause malfunctions.
- The instantaneous water heating function requires preheating time before hot water is dispensed.
- If hot water is not used for 5 seconds, the hot water function will turn off automatically to prevent burns. If you have not used hot water for a long period of time,

the temperature of water dispensed on the first glass may be lower than expected.

- If you use ambient or cold water immediately after dispensing hot water, the water may still be hot or warm due to the remaining water in the dispenser piping. Care should be taken to avoid burns.
- The temperature of the first glass may not be correct right after changing the hot water temperature, due to remaining water in the pipe.
- When dispensing hot water, small bursts of water and steam will be emitted as the cold water is rapidly heated. When dispensing hot water into a cup, hold the cup as close to the outlet as possible.
- The instantaneous heating method causes noise while heating water (before and during water supply).
- When a child uses the product, parental guidance is needed. As the manipulation unit is located on the top of the product, you can press the hot water button.

WARNING

- Steam may be created when source water flows in abnormally, such as repeated hot water supply and stop or source water valve locking.

WARNING

- Do not connect the pressure reducing equipment to the hot water tank pipe of this product.

Use temperature by hot water temperature (applicable to the model having hot water functions only)

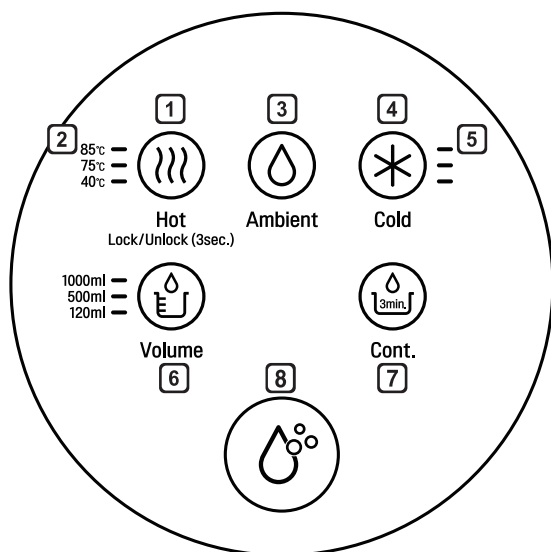
- 85 °C - Coffee, Cup noodle
- 75 °C - Green tea, Packet soup
- 40 °C - Warm drinking water

Suggestion for Energy Saving

- If the appliance will not be used for a long period of time, unplug the power plug and drain the water inside the filtered water dispenser completely.
- In case the hot water function will not be used, turn the hot water function off.

Using the Control Panel

Units and Functions



1 Hot button

This button allows dispensing of hot water.

1. Press the Hot button.
 2. When you press the Dispense button, hot water will come out.
- If you wish to not use the hot water function in order to save energy, press the Hot button for more than 3 sec. The hot water function will be cancelled. To use hot water again, press the Hot button again for more than 3 sec. The hot water function will be restored.
 - In case hot water is dispensed for longer than desired, press any button to stop dispensing.

2 Hot water temperature icon

This function dispenses hot water at 3 different temperatures. (40 °C, 75 °C, 85 °C)

- You can select the hot water temperature by pressing the Hot button.

3 Ambient button

This is the function to use ambient water.

1. Press the Ambient button.
 2. When you press the Dispense button, ambient water will come out.
- In case ambient water comes out continuously, press any button to stop.

4 Cold button

This button allows dispensing of cold water.

1. Press the Cold button.
 2. When you press the Dispense button, cold water will come out.
- In case cold water is dispensed for longer than desired, press any button to stop.

5 Cold water temperature icon

The cold water temperature is displayed in 3 levels.

- The icon is divided into 3 levels according to the cold water temperature status. As more indication lamps turn on, the colder the water becomes.
- The temperature cannot be adjusted by discretion.

6 Volume button

This function dispenses hot water, cold water and ambient water by separating the volume into 3 stages. (120 ml, 500 ml, 1000 ml)

- When you press the Hot, Ambient or Cold button, select the desired volume and press the Dispense button, the selected volume of the selected water type will dispense.
- The dispensed amount of water may vary depending on the installation environment. If an accurate measurement is necessary, use a separate measuring device.

7 Cont. button

This function dispenses cold water or ambient water continuously for up to 3 minutes.

- Hot water cannot be dispensed continuously.
- If another button is pressed while dispensing water continuously, the dispensing will stop.

8 Dispense button + Filter change icon

This function is used for dispensing water.

The filter change icon indicates the filter change status.

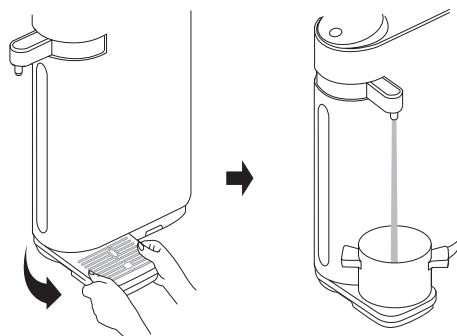
- The color indicating that the filter is usable is blue. The color indicating that the filter should be replaced is orange.

Notes for Using the Control Panel

- The control panel will turn on in any of the following cases.
 - When the power is turned on
 - When a touch button is pressed
- The control panel will dim automatically for energy saving in any of the following cases.
 - When 1 minute has passed after turning on the power
 - When no further touch button operation is carried out for 1 minute after a desired touch button is pressed
- If you press a touch button even after the control panel has dimmed, the relevant function will function.
- The touch buttons on the control panel operate by responding to an object with static electricity.
- If there is contact with a human body while cleaning the control panel, the touch button function may operate.
- If the control panel is smeared with a foreign substance or the touch buttons are operated with clothing or gloves, the operation may not respond or function.
- If the control panel is wet, it may not operate or the touch buttons may malfunction. Remove water before using the product.
- The dispense button is not a touch button. It operates only when the center area is pressed.

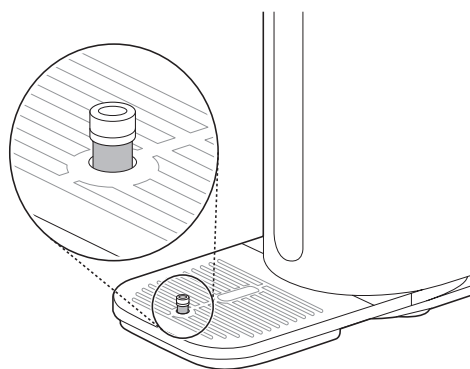
Using the Water Tray

You can turn the water tray to the left or right to use the product in various directions.



- If the water tray of the appliance protrudes from a desk or table, do not place any article on top of the water tray.
- Do not place heavy items on the water tray.
- Set the direction of the water outlet in the same direction as the tray when using the product.

If the water tray is filled with water, the buoy will come up. If you see the orange buoy pop up, drain the water from the water tray.



- Drain water carefully so that it does not spill on to the floor.

MAINTENANCE

Cleaning

Notes for Cleaning

Use a soft wet towel to wipe the appliance exterior. If you have used a neutral detergent, wipe it with a clean towel to make sure it does not stain.

Do not use a rough brush, or detergent (such as toothpaste, alcohol, thinner, bleach, benzene, flammable liquid or polish) to remove adhesive marks or hand prints on the surface of the appliance.

- This can cause discoloration of the appliance exterior or appliance damage.

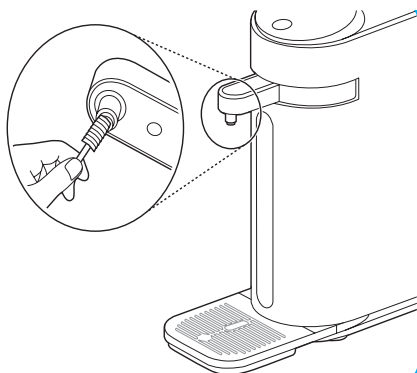
Clean the inside and outside of the water outlet periodically with a soft cleaning brush.

- If it is not cleaned periodically, lint, lime components (calcium, magnesium), or foreign substances can appear on the outlet.

Keep all drain outlets clear and unblocked.

How to clean water outlet

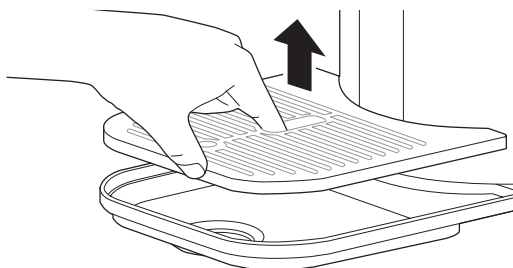
Clean the water outlet periodically using a soft brush. Residue buildup or foreign substances can accumulate in the water outlet.



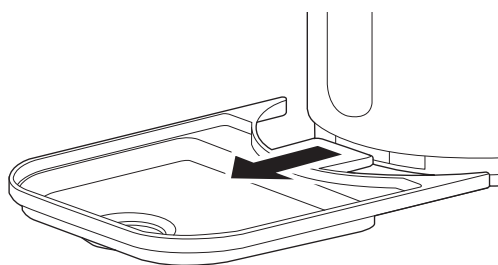
- If it is not cleaned periodically, lint, lime components (calcium, magnesium), or foreign substances can appear on the outlet.

How to clean water tray

- 1 Separate the water tray cover by pulling it upwards.



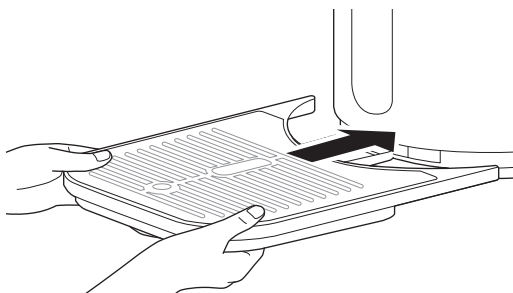
- 2 Remove the water tray by pulling it forward.



- 3 Clean it with water.

- 4 Wipe the surface of the water tray with a soft cloth.

- 5 Place the water tray cover on the water tray, adhere it to the front side of the product closely, and gently push it to install.




- Caution should be taken. If a large amount of water is in the water tray, water can spill out when separating the water tray.

Maintaining the Filter

Filter Name	Pre Carbon Filter Plus	UF Composite Filter
Place of origin	Korea	Korea
Manufacturer	LG Electronics	LG Electronics
Filter material	Activated Carbon + Poly-Ethylene	Activated Carbon + Poly-Ethylene + Poly-Sulfone
Effective amount of water filtration	1,800 L	

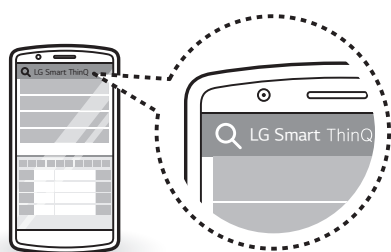
Using the Smart Function

This content only applies to models with  logo on the product.

Conveniently use the LG Smart Diagnosis™ to communicate with the appliance directly from a smart phone.

Installation of the Application


Search for the LG Smart ThinQ application from the Google Play Store on a smart phone.



Product Registration

- 1 Run the LG Smart ThinQ application on a smart phone.
- 2 Create an account and sign in.
- 3 Select Register.
- 4 Select Filtered water dispenser.
- 5 Follow the instruction on the smart phone.
 - If you see a pop-up message about NFC, turn on the NFC function in the smart phone.
- 6 Firmly attach the smartphone to the Tag On logo.
 - If you can not make a connection, then move the smart phone up and down slowly.

NOTE

- Press  in the LG Smart ThinQ application for a more detailed guide on how to use the Tag On function.
- To operate the NFC function with this appliance, it requires a smart phone which has at least a certain level of NFC recognition function.
- Because of the characteristics of NFC, if the transmission distance is too far, or if there is a metal sticker or a protective case on the phone, transmission will not be good. In some cases, NFC-equipped phones may be unable to transmit successfully.
- The content found in this manual may differ from the current version of the LG Smart ThinQ application, and the software may be modified without informing customers.
- NFC function would vary depending on smart phones.

Using the Application

Select the appliance of the Dashboard to use desirable functions by touching the LG appliance's Tag On logo with an NFC-equipped smart phones.

Smart Diagnosis

If you use the smart diagnosis function, you will be provided with the useful information such as a correct way of using the product based on the pattern of use.

TROUBLESHOOTING

Symptoms	Reason	Solution
Water taste strange.	Have you left the filtered water dispenser for a long period of time without using it?	<ul style="list-style-type: none"> The taste of water may change as it ages due to bacterial multiplication. Use the filtered water dispenser after discharging cold water, hot water and ambient water for 1000 ml respectively.
	Has it been a long time since you installed and replaced the filter?	<ul style="list-style-type: none"> If an expired filter is used, the filtration performance may decline. It is recommended to replace the filter according to the filter replacement period.
The filtration amount has reduced suddenly.	Is it time to replace the filter?	<ul style="list-style-type: none"> Make a request for a filter replacement.
	Is the water supply valve closed?	<ul style="list-style-type: none"> Open the water supply valve.
Water does not dispense.	Did you miss the filter replacement period?	<ul style="list-style-type: none"> Make a request for a filter replacement.
	Is the water supply valve closed?	<ul style="list-style-type: none"> Open the water supply valve.
	Is the power plug unplugged from the outlet?	<ul style="list-style-type: none"> Plug the power plug in the outlet correctly.
	Does water not dispense when you press the discharge button?	<ul style="list-style-type: none"> Contact your distributor, supplier or dealer.

Symptoms	Reason	Solution
Cold water, hot water or ambient water does not dispense.	Did you turn off the relevant function?	<ul style="list-style-type: none"> • Turn on the relevant function.
	Did you discharge a large amount of cold water?	<ul style="list-style-type: none"> • If you have discharged a lot of cold water so that there is little water in the storage tank, cold water may not dispense. Wait a while until water is filled inside the storage tank and then use. (Only applicable to models with a storage tank) • If you discharge a large amount of cold water at once, the temperature of cold water inside the cold water tank will rise. Wait a while until water becomes colder and then use. (Only applicable to models with a cooling tank)
	Did you discharge a lot of hot water?	<ul style="list-style-type: none"> • If you discharge a lot of hot water at once, the temperature of hot water inside the hot water tank drops and tepid water may dispense. Wait a while until hot water becomes hotter and then use. (Only applicable to models with a hot water tank)
	Did you discharge a lot of ambient water?	<ul style="list-style-type: none"> • If you have discharged a lot of filtered water (including ambient water) so that there is little filtered water in the storage tank, filtered water may not come out. Wait a while until water is filled inside the storage tank and then use. (Only applicable to models with a storage tank)

Symptoms	Reason	Solution
The product is noisy and generates abnormal sounds.	Is the product installed on a weak floor or not installed on a stable surface?	<ul style="list-style-type: none"> • Install the product in a place with a flat and even surface.
	Does the back of the product touch the wall?	<ul style="list-style-type: none"> • Adjust the installation position to ensure there is enough space around the product. (10 cm)
	Is an object placed on top of the product?	<ul style="list-style-type: none"> • Remove the object placed on top of the product.
No ice forms in the product. (Only applicable to models with ice function)	Is the ice machine cover opened?	<ul style="list-style-type: none"> • Put on the ice machine cover.
	Have 6 hours passed since tap water and power were supplied?	<ul style="list-style-type: none"> • Use the product after 6 hours since tap water and power were supplied first.
Fine particles occur in the filtered water.	Did water bubbles form?	<ul style="list-style-type: none"> • Water bubbles may form in the draining process. It is safe for you to drink. • If fine particles still exist after you take water from the filtered water dispenser and several minutes have passed, cut off the tap water and power supply and contact your distributor, supplier or dealer.

Memo

Memo

Memo

