

LG CordZero™

OWNER'S MANUAL

A9 K

Make sure to read the "Safety Cautions" carefully before starting to use this product.

Please keep this Owner's Manual within easy reach of the user.

As the product is only intended for domestic use such as household cleaning, it must not be used for commercial, experimental or industrial purposes.

Make sure to fully charge the product's battery before first use of the product after purchasing it.



MFL69883640
Rev.00_071420

www.lg.com
Copyright © 2020 LG Electronics Inc. All Rights Reserved.

TABLE OF CONTENTS

This manual may contain images or content that may be different from the model you purchased.

This manual is subject to revision by the manufacturer.

SAFETY INSTRUCTION

READ ALL INSTRUCTIONS BEFORE USE.....	3
WARNING.....	3
CAUTION	10

INSTALLATION

Product Overview.....	12
Installing the Charging Station	16
Storing the Accessories.....	18

OPERATION

Getting Started.....	20
Charging the Battery.....	22
Using the Mop Nozzle	23
Using the Nozzles and Tools.....	26

SMART FUNCTIONS

Using LG ThinQ Application.....	29
Smart Diagnosis Function.....	31

MAINTENANCE

Cleaning the Appliance	32
Cleaning the Nozzles	35

TROUBLESHOOTING

Before Calling for Service.....	39
---------------------------------	----

SAFETY INSTRUCTION

READ ALL INSTRUCTIONS BEFORE USE

The following safety guidelines are intended to prevent unforeseen risks or damage from unsafe or incorrect operation of the appliance. The guidelines are separated into '**WARNING**' and '**CAUTION**' as described below.

Safety Messages

 This symbol is displayed to indicate matters and operations that can cause risk. Read the part with this symbol carefully and follow the instructions in order to avoid risk.

 **WARNING**

This indicates that the failure to follow the instructions can cause serious injury or death.

 **CAUTION**

This indicates that the failure to follow the instructions can cause the minor injury or damage to the product.

WARNING

WARNING

- To reduce the risk of explosion, fire, death, electric shock, injury or scalding to persons when using this product, follow basic precautions, including the following:

Technical Safety

- This appliance is not intended for use by persons (including children) with reduced physical, sensory or mental capabilities, or lack of experience and knowledge, unless they have been given supervision or instruction concerning use of the appliance by a person

EN 4 SAFETY INSTRUCTION

responsible for their safety. Children should be supervised to ensure that they do not play with the appliance.

- Do not allow the appliance to be used as a toy. Close attention is necessary when used by or near children.
- Do not allow children to play with or hang on the appliance.
- Do not use the appliance with damaged power cord or plug. The cord must be replaced. If the appliance is not working as it should, has been dropped, damaged, left outdoors, or dropped into water, return it to an LG Electronics service centre.
- Do not pull or carry by cord, use cord as a handle, close a door on cord, or pull cord around sharp edges or corners. Do not run appliance over cord. Keep cord away from heated surfaces.
- Do not unplug by pulling on cord. To unplug, grasp the plug, not the cord.
- Place the cords from other appliances out of the area to be cleaned.

Battery

- Never use the battery, adapter, and the charging station from other appliances with this appliance. Use only the battery and the charging station provided by LG Electronics.
- Never use the battery, adapter, and the charging station from this appliance with other appliances.
- Do not disassemble, remove or short-circuit the battery.
- Have specifically designated battery packs replaced when it is no longer able to hold a charge.
- Refer to the **Charging the Battery** section instructions for the method of replacing the battery.
- When disposing of this appliance, follow regulations for disposal of rechargeable lithium-ion batteries.
- Follow all local ordinances and regulations when handling or disposing of the battery.

- Prevent unintentional starting. Ensure the switch is in the off position before connecting to the battery pack, picking up or carrying the appliance.
- Disconnect the battery pack from the appliance before making any adjustments, changing accessories, cleaning, serviing, or storing appliance.
- When battery pack is not in use, keep it away from other metal objects, like paper clips, coins, keys, nails, screws or other small metal objects, that can make a connection from one terminal to another.
- Under abusive conditions, liquid may be ejected from the battery. If this happens, avoid contact. If contact accidentally occurs, flush with water. If liquid contacts eyes, additionally seek medical help.

Battery Specifications

- One or two batteries are provided, the number of batteries varies depending on the model purchased.
 - **Model Name:** EAC63382204
 - **Type:** Rechargeable Lithium-ion Battery
 - **Rated Capacity:** 25.2 V⁼⁼, 2400 mAh

Installation

- To avoid an electrical shock or fire, do not install, charge or store the appliance where it may be exposed to water, rainfall or high humidity.
- Install, charge and store the appliance in a well-ventilated place.
- Avoid operating the appliance in areas where there is a risk of leakage of flammable gas, industrial oil or metallic dust.
- Do not store or install the appliance, power cord or plug near heating devices or open flames.
- Install the charging station on a firm, level surface.
- To prevent tipping, floor standing mode installations should be anchored to the wall using the provided stand anchoring screw, anchoring block and double-sided tape.

EN 6 SAFETY INSTRUCTION

- In wall-mounted mode installations, the charging station should be secured tightly to the wall using the provided wall anchoring screws.
- Use the anchoring screws only when attaching to concrete or similar solid surfaces.
- Never drill into a wall without first checking that the area behind it is free from power conduits, plumbing, vents, or cables.
- Do not use or store the appliance at temperatures below 5 °C or above 38 °C.
- Do not store or install the appliance where it is exposed to temperatures below freezing or exposed to outdoor weather conditions.
- When installing or moving the appliance, be careful not to pinch, crush, or damage the power cord or plug.

Operation

- Read all instructions before using the appliance, and save these instructions.
- Use only as described in this manual. Use only manufacturer's recommended attachment.
- This appliance is designed for normal indoor domestic use only. It is not to be used for any non-residential, commercial, or industrial application.
- This product should only be used with a 100 V - 240 V~ 50/60 Hz, 0.8 amp outlet. Make sure to check the power specifications of the place where you intend to use the appliance.
- Do not handle the power cord, plug, or appliance controls with wet hands.
- Wipe any moisture or dirt off the cord or plug with a dry cloth.
- Never attempt to operate this appliance if it is damaged, malfunctioning, partially disassembled, or has missing or broken parts, including a damaged cord or plug. Take it to an authorized LG Electronics service centre or dealer for assistance.
- Do not apply excessive force to the power cord to bend it, or place it under a heavy object as this will damage it.

- Do not use multiple-outlet adapters with this appliance. Make sure to use a power socket with a capacity of 10 A.
- Do not plug the appliance into a damaged or loose outlet.
- Make sure to unplug the power cord when the appliance is not to be used for an extended period of time.
- Do not damage, alter, excessively bend, twist, pull, pinch or heat the power cord.
- Before using the appliance, remove any wire or string on the floor.
- Avoid touching the prongs of the power plug with your finger(s) when unplugging the power cord.
- Do not cover the power cord with a rug or carpeting.
- Push the power plug firmly into the wall outlet so that it is not loose.
- If the product has been submerged, contact an LG Electronics service centre or dealer for instructions before resuming use.
- If the product makes a strange noise or emits an odour or smoke, discontinue use and contact an LG Electronics customer information centre.
- Only qualified technicians or service personnel from LG Electronics may disassemble, repair or modify the appliance.
- Never insert a sharp metallic object such as a pin, nail or knife in a hole or gap in the appliance or the charging station.
- Do not vacuum liquids with this appliance. Make sure that no water, beverage or detergent gets inside the appliance or the charging station.
- Do not allow the appliance to sweep up blades, thumb tacks, sawdust, sharp objects, or hot or cold ashes.
- Do not allow children to use the appliance.
- Do not let children or pets get close to the appliance when using, charging or storing.
- Do not insert the nozzle or tools in your mouth.
- Keep clothing and hair, fingers, or other parts of the body away from openings and moving parts.
- Do not operate the appliance with the suction inlet or outlet blocked.

EN 8 SAFETY INSTRUCTION

- Do not use the appliance without the dust bin and filters in place.
- Do not use in an enclosed space where vapors are present from paint thinner, mothproofing substances, flammable dust or other explosive or toxic materials.
- Do not touch the charging terminals on the appliance or the charging station, or insert an electrified object inside the appliance or the station.
- Always store the appliance on the floor standing or wall-mounted charging station when it is not in use.
- Do not lean the appliance on walls, chairs or tables.
- If the earth leakage breaker is tripped when the product is put on the charging station, immediately remove the appliance from the charging station. Contact an LG Electronics customer service centre.
- Use extra care when cleaning on stairs.
- Do not use or store a heating device or flammable substance(ether, benzene, alcohol, chemicals, combustible sprays, insecticide, air freshener or cosmetics) in close proximity to the appliance.
- Do not attempt to clean up a liquid substance (water, beverage), odorous substances (candy, chocolate, pet excrement), metallic objects (blades, pins), flammable substances, burning/ smoking(cigarettes, matches, or hot ashes), surfactants, or glass shards with this appliance.
- In the event of a gas leak(natural gas, propane gas, etc.), do not operate this or any other appliance. Open a window or door to ventilate the area immediately.
- Do not hold the charging station upside down with the battery in the charging station.
- Do not expose the appliance, and the battery in particular, to heat, a heating device or direct sunlight.
- Do not keep the appliance or its battery inside a vehicle which is exposed to direct sunlight.
- Never allow any water, beverage or detergent to get inside the battery.
- Do not apply physical impacts to the battery.

Maintenance

- Make sure to unplug the power cord when cleaning or maintaining the charging station.
- Do not wash the inlet port or the dust bin with water or detergent.
- Do not use detergents, polishes or air fresheners to clean the dust bin.
- Do not apply or spray a flammable substance (gasoline or thinner) or surfactants (detergent or bath soap) on the appliance.
- Wash hands after handling nozzles. The nozzles contain carbon fiber, and contact may cause minor skin irritation.

Disposal

- Keep packing materials out of the reach of children. Packaging materials can pose a suffocation risk for children.
- Destroy the carton, plastic bag, and other packing materials after the appliance is unpacked. Children might use them for play. Cartons covered with rugs, bedspreads, or plastic sheets can become airtight chambers.
- Dispose of this appliance according to local, state, and regional laws and regulations.
- Contact your local city council or the related government authority before disposing of this appliance.

Mop Nozzle

- Do not vacuum sharp objects (glass pieces, wire, blades, pins, etc.) with the mop nozzle attached. When cleaning the mop pads after mopping, you could be injured by a sharp object embedded in the mop.

CAUTION

CAUTION

- To reduce the risk of injury to persons, malfunction, or damage to the product or property when using the appliance, follow basic safety precautions, including the following:

Operation

- This appliance has a built-in safety device to prevent damage from overheating. If the appliance becomes overheated after extended use, it may automatically turn off. If this occurs, leave the appliance in a cool, well-ventilated area for about an hour before turning on the power again.
- Do not subject the product to shocks or drop it.
- Do not install wet or damp filters.
- Always use a soft cloth to clean the appliance. Do not clean the product with a volatile or organic solvent (thinner or acetone).
- Do not clean the same spot repeatedly for an extended period of time. Doing so may damage the carpet or flooring surface.
- Keep fingers away from pinch points when assembling the appliance or the charging station.
- Do not use the double-sided tape to anchor the charging station on wallpaper. Use the provided screws to anchor the charging station. The weight of the charging station and the appliance could damage the paper.
- Do not apply force or any impact to the Cyclonic Mesh Filter.
- Do not remove the battery during operation.

Mop Nozzle

- Do not use the mop nozzle for any purpose (for example, polishing a car, cleaning windows) other than domestic floor cleaning.
- Do not use the mop nozzle to vacuum up liquids (water, beverage).
- When using the mop nozzle, always attach the mop pads.

- Do not clean a coated, rough or delicate floating floor and carpets with the mop nozzle.
- Do not use the mop nozzle to clean the same spot repeatedly for an extended period of time. The water injection at the mop nozzle may cause water to get into the dust inlet and damage the appliance.
- Do not step on the mop nozzle.
- Wet floors can pose a slip hazard. Allow floors to dry completely before allowing anyone to walk on them.
- Do not store the appliance by attaching the water tank filled with water to the mop nozzle.

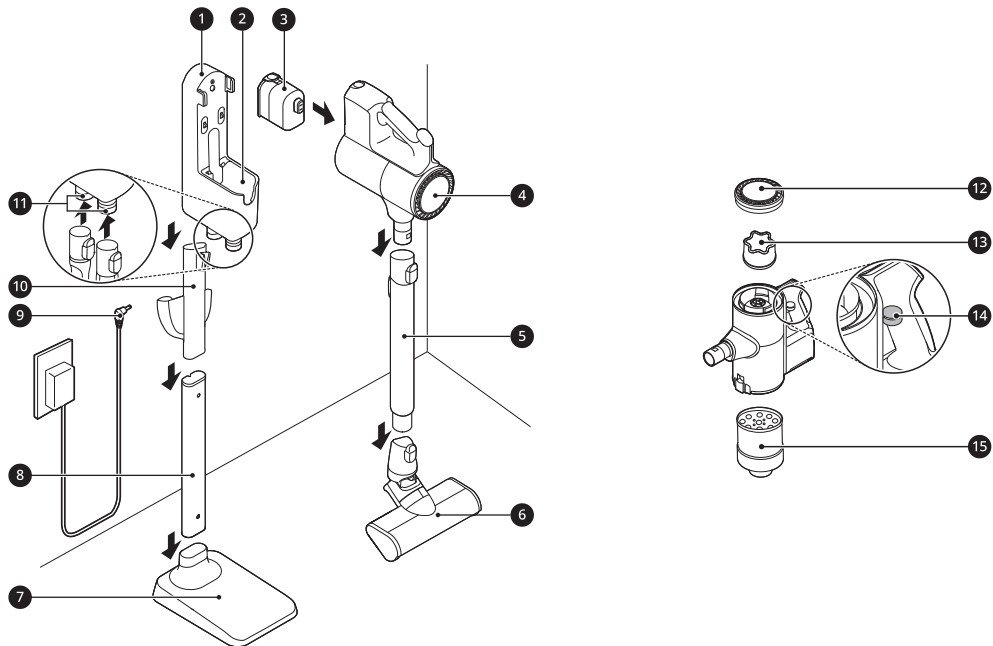
INSTALLATION

Product Overview

The images in this guide may be different from the actual components and accessories, which are subject to change by the manufacturer without prior notice for product improvement purposes.

Front View

*1 This feature is only available on some models.

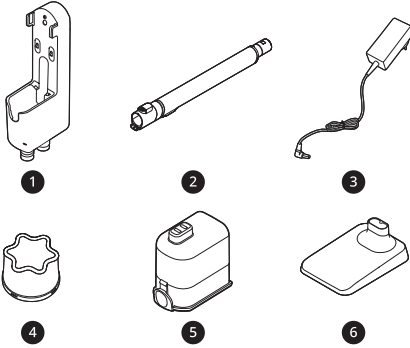


- | | |
|------------------------------|------------------------|
| ① Charging Station | ⑪ Tool Holders |
| ② Auxiliary Charging Station | ⑫ Exhaust Filter |
| ③ Battery (Dual Battery *1) | ⑬ Pre-filter |
| ④ Product Body | ⑭ Kompressor Lever |
| ⑤ Extension Pipe | ⑮ Cyclonic Mesh Filter |
| ⑥ Nozzle | |
| ⑦ Floor Stand Dock | |
| ⑧ Floor Stand Pipe | |
| ⑨ Adapter | |
| ⑩ Detachable Nozzle Storage | |

Accessories

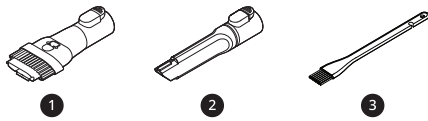
*1 This accessory is only available on some models.

Included Accessories



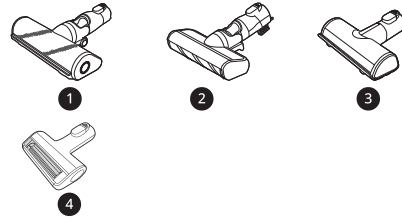
- 1 Charging Station
- 2 Extension Pipe
- 3 Adapter
- 4 Pre-filter
- 5 Battery (Dual Battery)*1
- 6 Floor Stand Dock*1
- 7 Floor Stand Pipe*1

Basic Accessories



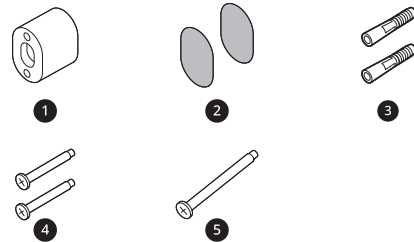
- 1 Combination Tool
- 2 Crevice Tool
- 3 Cleaning Brush

Nozzles



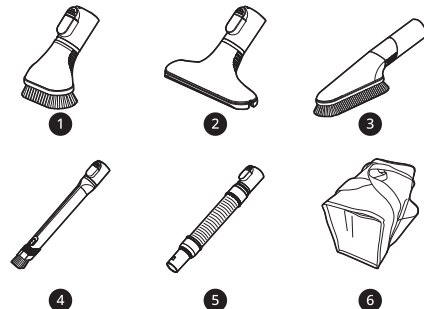
- 1 Multi-Surface Power Drive Nozzle*1
- 2 Power Drive Floor Nozzle*1
- 3 Power Punch Nozzle*1
- 4 Power Drive Mini Nozzle*1

Installation Kit



- 1 Wall Anchoring Block*1
- 2 Double-Sided Tape*1
- 3 Drywall Anchor*1
- 4 Wall Anchoring Screw*1
- 5 Stand Anchoring Screw*1

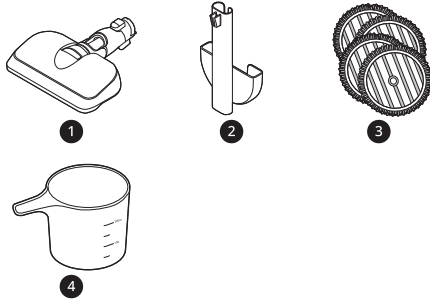
Tools and Accessory Bag



EN 14 INSTALLATION

- ❶ Hard Dirt Tool*¹
- ❷ Mattress Tool*¹
- ❸ Multi-angle Tool*¹
- ❹ Flexible Crevice Tool*¹
- ❺ Flexible Hose Extension*¹
- ❻ Accessory Bag*¹

Mop Kit



- ❶ Mop Nozzle*¹
- ❷ Detachable Nozzle and Mop Pads Storage*¹
- ❸ Mop Pads for General Cleaning*¹
- ❹ Measuring Cup*¹

NOTE

- The mop pads, batteries, exhaust filter and the pre-filter will eventually need to be replaced. Contact an LG Electronics customer service centre.

Specifications

Appliance

Model	A9*****	
Dimensions (Width X Depth X Height)	260 mm X 270 mm x 1120 mm	
Weight	Approximately 2.6 kg	
Power Consumption	370 W in Turbo Mode (Maximum 590 W) 120 W in Power Mode 68 W in Normal Mode	
Battery Run Time (Using two battery)	Using with the Power Drive Nozzle Up to 12 minutes in Turbo Mode Up to 40 minutes in Power Mode Up to 80 minutes in Normal Mode	Using Nozzles other than the Power Drive Nozzle Up to 14 minutes in Turbo Mode Up to 60 minutes in Power Mode Up to 120 minutes in Normal Mode
Battery Run Time (Using one battery)	Using with the Power Drive Nozzle Up to 6 minutes in Turbo Mode Up to 20 minutes in Power Mode Up to 40 minutes in Normal Mode	Using Nozzles other than the Power Drive Nozzle Up to 7 minutes in Turbo Mode Up to 30 minutes in Power Mode Up to 60 minutes in Normal Mode

Charger Adaptor

Model	ADC-30FSA-30 29430EPSA
Input	100 V - 240 V~, 50/60 Hz, 0.8 A
Output	DC 29.4 V $\overline{=}$, 1.0 A

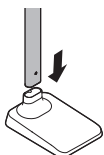
- Dimensions are given for the assembled product body, extension pipe and nozzle.
- Suction power is an average of suction power with IEC 62885-2, 5.8 standard tested by an independent test lab. Individually measured data would be different from a lab test result.
- Battery run time is the result of using a fully charged battery according to the LG Electronics test standard. Results may be different depending on actual use environment and period of use.
- The Power Drive Nozzle contains the direct drive motor that rotates the nozzle cleaning head directly.

Installing the Charging Station

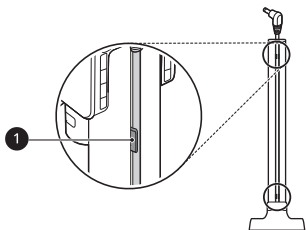
Self-Standing Installation

Follow the steps below to install the charging station on a hard and level floor.

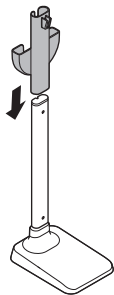
- 1 Place the floor stand dock on a hard and level floor and assemble the floor stand pipe.



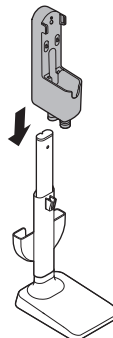
- 2 Clip the power cord tidily into the cord keeper ① on the back of the floor stand pipe.



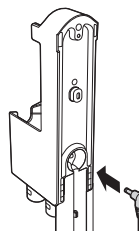
- 3 Slide the detachable nozzle storage onto the floor stand pipe.
 - Make sure not to pinch or tangle the power cord behind the mop pads storage.



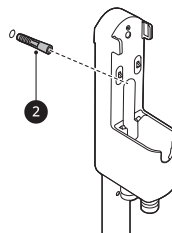
- 4 Assemble the charging station onto the top of the floor stand pipe.



- 5 Connect the power adapter to the port on the back of the charging station.

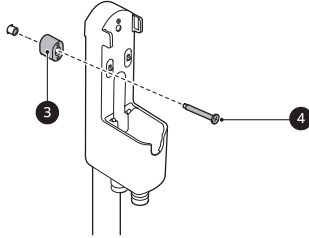


- 6 Drill a hole in the wall and insert the drywall anchor ② if needed.
 - Before drilling, make sure that there are no pipes or electrical wires inside the wall at the desired location.
 - For drywall anchor: use 1/4" (6.5 mm) drill bit
 - For concrete or wall stud: use 1/8" (3 mm) drill bit
 - If screwing into drywall, use the drywall anchor.



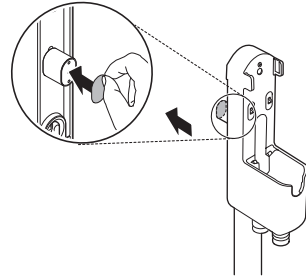
- 7 Align the wall anchoring block ③ of the charging station, and fix the charging station

to the wall by tightening the anchoring screw **4** all the way.



2 Attach the second piece of double-sided tape to the other side of the wall anchoring block to secure it to the wall.

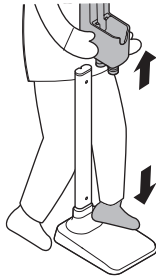
- Do not use double-sided tape on wallpaper.



8 Plug the power cord into the power outlet.

NOTE

- The charging station can be removed as needed. To remove it, hold the floor stand dock steady and pull up on the charging station.



Wall-Mounted Installation

For wall-mounted installations, the charging station must be attached securely to the wall using the provided(short) wall anchoring screws.

- The detachable nozzle storage cannot be attached to the charging station in a wall-mounted installation.

1 Connect the power adapter to the port on the back of the charging station.

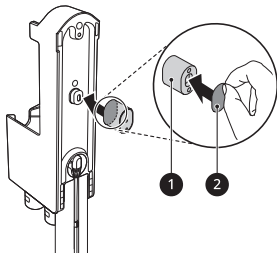
2 Drill 2 holes and insert the drywall anchors(if needed) at least 1 m from the floor and near enough to easily reach a power outlet.

- Before drilling, make sure that there are no pipes or electrical wires inside the wall at the desired location.
- For drywall anchor: use 6.5 mm drill bit
- For concrete or wall stud: use 3 mm drill bit

Using Double-Sided Tape to Secure the Appliance

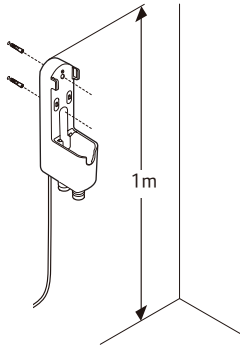
1 Use the double-sided tape **1** to attach the wall anchoring block **2** to the charging station.

- Remove the centre section of double-sided tape before attaching it to the wall anchoring block.

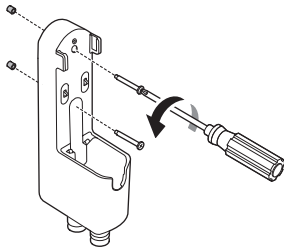


EN 18 INSTALLATION

- If screwing into drywall, use the drywall anchors.



- 3 Attach the charging station to the wall with the wall anchoring screws.



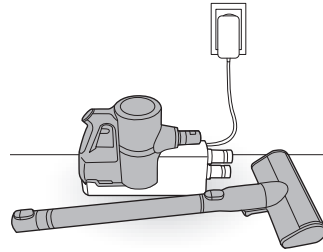
- 4 Plug the power cord into the power outlet.

Compact Installation

For safety and convenience, install the charging station using the self-standing or wall-mounted installation methods. If you choose not to install the charging station, place it on a level floor for charging or storage.

- 1 Connect the power adapter to the port on the back of the charging station.
- 2 Place the charging station on a hard and level floor.

- 3 Separate the extension pipe and nozzle from the product body before charging or storing the appliance.



- 4 Plug the power cord into the power outlet.

⚠ CAUTION

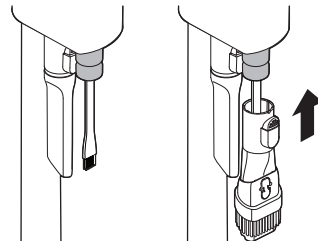
- Leaving the appliance on a level floor for a long time with the extension pipe and nozzle attached may damage the appliance.

Storing the Accessories

Storing the Tools

Store the frequently used tools such as the combination tool, crevice tool and cleaning brush at the bottom of the charging station.

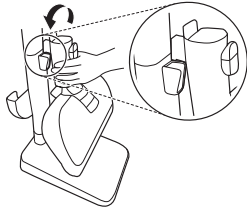
- Slide the cleaning brush up into the tool holder.
- Slide the combination tool over the cleaning brush and onto the tool holder.
- To remove a tool, press the release button at the front of the tool.



Storing the Nozzles

When a nozzle is not in use, store it in the convenient detachable nozzle storage so you can easily find it.

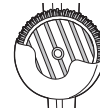
- The nozzle storage cradle is compatible with the **Power Drive Floor Nozzle** or the **Power Punch Nozzle**.



Storing the Mop Pads

Up to 2 mop pads can be stored in the detachable mop pads storage.

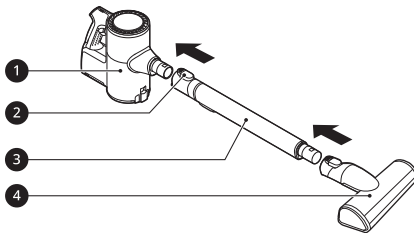
- Store the mop pads completely in a dry state. It can result in an unpleasant odour.



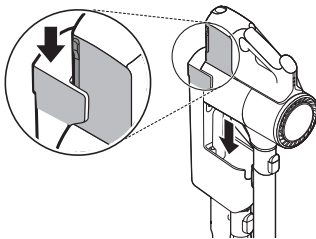
Assembling the Appliance

Follow these steps to safely assemble the appliance.

- 1 Firmly attach the extension pipe ③, nozzle ④, or tool onto the product body ①.
 - To detach the extension pipe, press the extension pipe release button ②.



- 2 Put the product body on the charging station.
 - See **Charging the Battery** for instructions on installing and charging the battery.



OPERATION

Getting Started

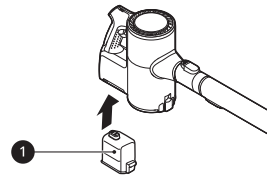
Before Cleaning the Appliance

- Support the bottom of the appliance when cleaning an elevated surface.
- To avoid scratches on polished floors, keep the brushes of the nozzles and tools free from grit, sand, or abrasive objects.
- Make sure that the exhaust filter or pre-filter is properly assembled before using the appliance.
- Close the dust bin cover properly before using the appliance. If the dust bin cover is left open, the suction strength may deteriorate and affect the cleaning results.
- Store the appliance in the charging station or place it flat on the floor when not in use. Leaning the appliance against a wall or chair can result in product damage or personal injury if the appliance falls.
- Environmental conditions such as temperature and humidity may cause static electricity to accumulate on the appliance. Please contact LG Electronics customer information centre if the problem persists.
- Make sure to remove any foreign object such as a sock or stocking before using the appliance. Any foreign object on the inlet port or extension pipe will prevent the appliance from functioning properly.
- Please use the product at normal room temperatures as the battery runtime may deteriorate severely if used at temperatures lower than 5 °C or higher than 38 °C for an extended period of time.
- The battery runtime is dependent on the surface type and the suction power.
- Follow manufacturer's recommendations when cleaning flooring, carpets, and rugs.
- Refer to the **Specifications** section for battery runtime details.

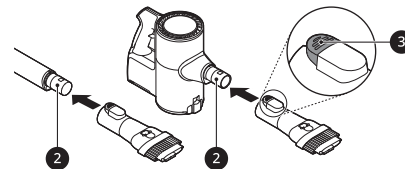
Assembling Attachments

Nozzles and tools can be attached to either the product body or the end of the extension pipe.

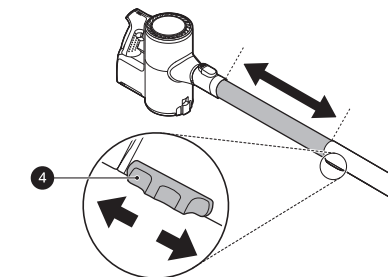
- 1 Insert the fully charged battery ① into the cavity at the bottom of the handle on the product body.



- 2 Attach the nozzles, tools, or extension pipe by sliding them onto the inlet ② on the body until they click into place. The nozzles and tools can also be attached to the end of the extension pipe ②.



- 3 Adjust the extension pipe by pressing the length adjustment button ④ on the back of the pipe and sliding until it clicks into place at the desired length.



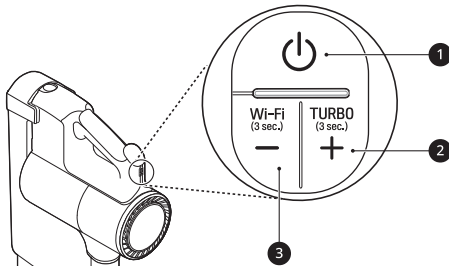
- The extension pipe extends in four steps.

4 Press the **Power** button to activate the **Normal** mode.

- To turn off the appliance, press the **Power** button again.

Adjusting the Suction Power

Adjust the suction power using the suction power adjustment button on the handle.



1 Power Button

- Press the **Power** button to turn the appliance on or off.
- Press the **Power** button to activate **Normal** mode.

2 Suction Power Up (+) Button / Turbo Mode

- Press the + button to increase the suction power. (**Normal**→**Power**→**Turbo**)
- Press and hold the + button for more than 3 seconds to activate **Turbo** mode from **Power** mode.

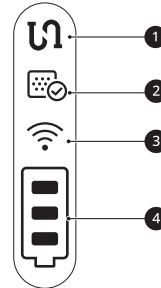
3 Suction Power Down (-) Button / Wi-Fi Mode

- Press the - button to decrease the suction power. (**Turbo**→**Power**→**Normal**)
- Press and hold the - button for 3 seconds to activate Wi-Fi and connect the appliance in the **LG ThinQ** application.

Display

The handle of the appliance displays indicators for clogged objects, filter cleaning alerts, appliance

connection status, and the remaining battery charge.



1 Clogged Objects Indicator

- This indicator lights up when the interior of the product body, extension pipe, inlets, nozzle, exhaust filter, pre-filter, or cyclonic mesh filter is clogged with foreign objects.
- If clogging persists, the motor will cycle and the appliance will shut off. Remove the foreign objects and clean the exhaust filter, pre-filter and cyclonic mesh filter following the steps in the Removing Foreign Objects section.

2 Filter Cleaning Cycle Alarm Indicator

- This indicator lights up when the appliance is used for a certain period of time. Clean the exhaust filter, pre-filter and cyclonic mesh filter if necessary.

3 Wi-Fi Indicator

- This indicator blinks when the appliance is connecting to the **LG ThinQ** application or home Wi-Fi network, and the indicator lights up when the connection is complete.

4 Battery Level Indicator

- The remaining battery level is displayed in 3 stages according to the remaining battery power.
- The battery level indicator blinks when the battery needs to be charged.
- As the product is charging, bars light up on the battery level indicator to indicate the level of charge.
- Once the battery is fully recharged, 3 bars will remain lighted on the battery level indicator.

Charging the Battery

Before Charging the Battery

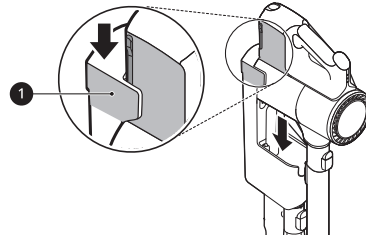
- Make sure that the adapter is connected to both the charging station and the power outlet.
- Fully charging a single battery usually takes 3.5 hours. It will take twice as long to charge both the main and auxiliary batteries.
- The battery will not be charged if the indoor temperature is below 5 °C. Only charge the battery when indoor temperatures are between 5 °C and 38 °C.
- The battery will eventually need to be replaced. Due to the battery characteristics, runtime is shortened after using the appliance repeatedly for an extended period.
- The last bar on the battery indicator begins to flash when the battery needs to be recharged. Use the appliance with a fully charged battery.
- To maintain battery life on dual-battery models, swap the positions of the two batteries periodically, between the main body and the auxiliary charging station.

Charging the Product Body

Storing the appliance on the charging station automatically recharges the battery.

- 1 Press the **Power** button to turn the appliance off.
- 2 Put the product body onto the charging station by aligning it to the hook ❶ of the charging station.
 - The battery level indicator starts to blink and begins charging the battery.

- If you don't hear a beep, reload the appliance on the charging station.



⚠ WARNING

- Make sure to securely fit the product body onto the charging station. If the appliance falls off the charging station, it could cause injuries, property damage or product damage.

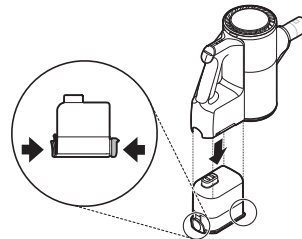
Charging the Auxiliary Battery

An auxiliary battery can be stored and charged in the base of the charging station.

⚠ CAUTION

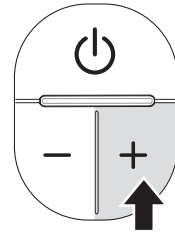
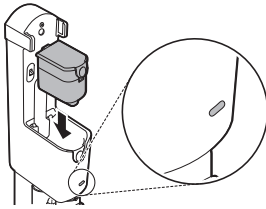
- Keep fingers away from pinch points when assembling or disassembling the battery from the product body or the charging station to avoid personal injury.

- 1 Remove the discharged battery from the product body by pressing the battery release button on either side of the battery and pulling.



- 2 Insert the discharged battery into the auxiliary charging station.
 - The battery will only fit into the cavity if aligned properly.

- The auxiliary charging indicator blinks while recharging is in progress.
- The auxiliary charging indicator lights up when charging is complete.
- Press the **+** button to turn on the dust suction function.



- Press the **-** button once while pressing the **+** button once to turn off the dust suction function.

Using the Mop Nozzle

Before Using the Mop Nozzle

- The mop pads only rotate at one speed regardless of what suction power setting the product body is set to.
- To prevent product damage, the mop attachment plate will automatically stop if there are foreign objects stuck in the plate or if it is subjected to a strong impact. Turn the appliance off immediately and remove the foreign objects or obstructions before resuming use.
- If you hear a noise while mopping, the mop pad may have dropped off the mop attachment plate. Turn off the product immediately and reattach the mop to the attachment plate before resuming use.
- Do not use a soiled mop pad to clean floors.
- Use only authorized LG Electronics mop pads.
- Empty the dust bin and clean the fine dust filter and the pre-filter after using the mop nozzle.

⚠ CAUTION

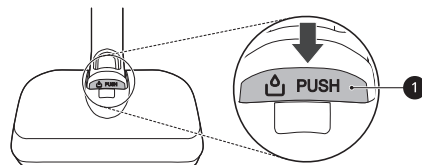
- Do not assemble or disassemble the nozzle while the appliance is turned on. Doing so may result in injury.
- Set the water adjustment button to the **STOP** position when not using the appliance for an extended period of time. Failure to do so may result in product failure.
- Do not let the appliance stand on the floor while the wet mop pads are attached. Doing so may result in damage or swelling to wood flooring.
- Do not use on PVC or PU mat for infants or children. Friction can cause the motor to overheat.
- If you use the mop nozzle for a long time with the suction off, the motor may overheat (recommended duration of use: 80 minutes). When the motor overheats, the overheating prevention function is activated and the appliance is automatically turned off. Use the appliance after cooling the heat for about one hour in a cool, well-ventilated place.

Using the Wet Mop Pads

Press the **Power** button. You can use the only mop mode and not turn on the dust suction function.

Filling the Water Tank

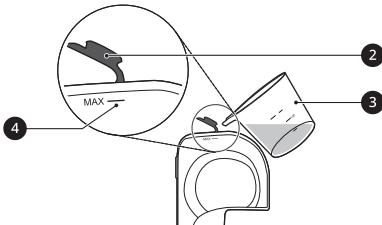
- 1 Press the **PUSH** button **1** to remove the water tank from the mop nozzle.



EN 24 OPERATION

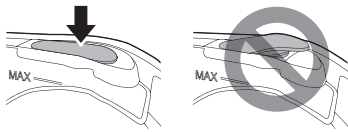
2 Open the water inlet cap **2** on the side of the water tank and fill the tank with water using the measuring cup **3**.

- Open only one water inlet cap to fill the water. Opening both caps may cause the water to flush.
- Do not fill the tank over the **MAX** line **4**.
- Do not put liquid other than water and hot water in the water tank.



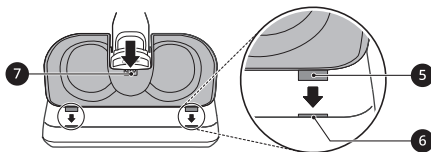
3 Close the water inlet cap tightly.

- If the water inlet cap is not closed properly, water may leak.



4 Attach the water tank to the mop nozzle again.

- Insert the 2 tabs **5** at the front of the water tank into the slots **6** on the top of the mop nozzle. Press down at the centre **7** to lock the tank in place.

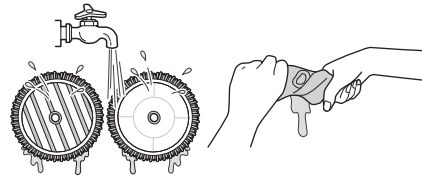


Attaching the Mop Pads

1 Wet both sides of the mop pads with water then squeeze out any excess water before attaching the pads.

- Do not attach pads while they are dripping wet.

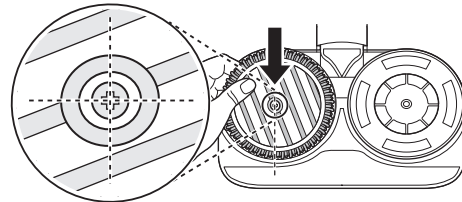
- Attaching and using mop pads while they are dry may affect the cleaning results.



2 Place the mop nozzle upside down on the floor.

3 Align and attach the centre of the mop pad with the centre of the mop attachment plate.

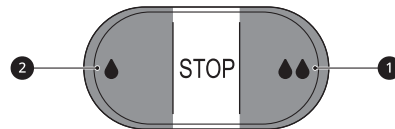
- Attach the mop pad so the striped side is visible. Attaching the mop pad upside down or improperly may affect the cleaning results.



4 Attach the mop nozzle to the appliance.

Adjusting the Amount of Water

Press the water adjustment buttons to adjust the amount of water released onto the mop pad to either **High Mode** or **Low Mode**.



- **High Mode:** Press the **High Mode** button **1** all the way down to clean ingrained dirt or supply a large amount of water.

- **Low Mode:** Press the **Low Mode** button **2** all the way down to supply a small amount of water for cleaning wood or other flooring that can be damaged by too much water.

- **STOP:** Press the **Low Mode** or **High Mode** button halfway to toggle back to the **STOP**

position. This stops the supply of water so you can go over areas that are already wet.

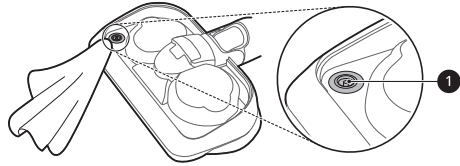
⚠ WARNING

- To avoid injury, do not attach the mop pad while the mop attachment plate is rotating.

⚠ CAUTION

- Do not let the appliance stand on the floor while the wet mop pads are attached. Doing so may result in damage or swelling to wood flooring.

a soft cloth. The water could drip onto the floor and damage it.

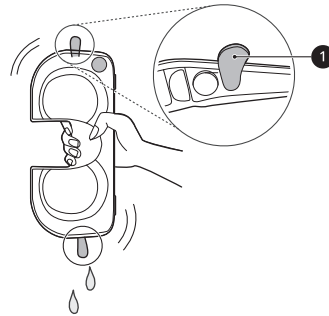


- Do not pull or stretch the rubber gasket on the water supply inlet. Doing so may tear or damage it.

Using with the Mop Nozzle

- 1 Attach the water tank and mop pads to the mop nozzle.
- 2 Set the water adjustment button to the **STOP** position.
- 3 Press the **Power** button to start cleaning.

- 1 Open the 2 water inlet caps **1** on the side of the water tank and empty the water tank. Shake the water tank to remove the remaining water.



Drying the Water Tank and Mop Pads

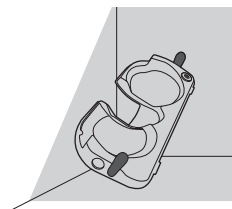
Drying the Water Tank

When cleaning is completed, make sure to empty the water tank and dry it before storing the mop nozzle.

⚠ CAUTION

- Turn the water inlet caps to make sure they remain open when storing the water tank. If caps are closed and not properly dried, it may cause odour.
- Do not remove the water inlet caps from the water tank. Caps may tear.
- Do not add detergent, vinegar or baking soda to the water tank when washing. It is not easily removed in the water tank, which may soil the floor.
- After cleaning, wipe off any remaining water on the water supply inlet **1** on the mop nozzle with

- 2 Leave the 2 water inlet caps open and allow the water tank to dry in a well-ventilated area out of direct sunlight for at least 24 hours.
 - Keep the water tank after water is completely empty and dry. Moisture or residual water in the tank may cause odour.



Drying the Mop Pads

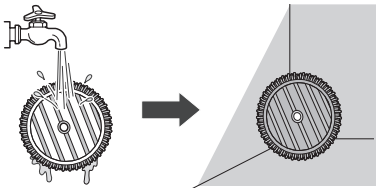
After using the mop pads, hand wash them and allow them to dry before storing them.

EN 26 OPERATION

⚠ CAUTION

- Do not use as follows, as it may become deformed.
 - Do not use bleach or fabric softener when washing the mop pads.
 - Do not dry the pads in a clothes dryer.
 - Do not boil the mop pad.

- 1 Separate the mop pads from the mop attachment plate.
- 2 Hand wash the pads with a neutral detergent.
 - Storing mop pads in a damp state can result in an unpleasant odour. Set the pads in a well-ventilated area out of direct sunlight for at least 24 hours or until completely dry.

**Using the Nozzles and Tools**

Some accessories are only available on some models.

Specialized attachments can help you clean more effectively. Tools and nozzles can be attached to the product body or the extension pipe.

- Adjust the suction power if the inlet gets stuck on the floor, carpet, or bedding.
- Each **Power Drive Nozzle** is equipped with a motor and may make a sound when operating.

⚠ CAUTION

- Do not use the **Multi-Surface Power Drive Nozzle** or **Power Drive Floor Nozzle** on PVC or polyurethane mats for infants and children. The mat may stick to the nozzle, making it difficult to operate, causing damage to the mat or static

electricity on the appliance. Clean mats using the crevice tool.

Multi-surface Power Drive Nozzle

Use this nozzle to clean carpets or rugs.

- If used on hard flooring, this nozzle will be noisy.

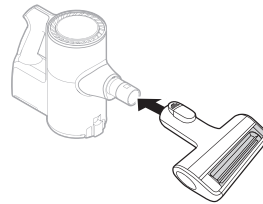
Power Drive Floor Nozzle

Use this nozzle to clean hard floor surfaces.

- While cleaning, it was not intended, but pressing the **PUSH** button on the nozzle may remove the brush. Please attach the brush again.

Power Drive Mini Nozzle

It is suitable for soft surfaces and pet hair removal.

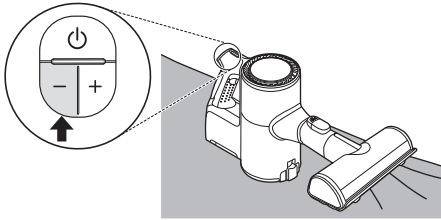
**⚠ CAUTION**

- Do not use the nozzle following surface. It may cause scratch or damage. Especially, do not clean a coated or lacquered floor. If used repeatedly, the coating may wear off.
 - Clothing, bedding
 - Leather cushioned sofas, cushions
 - Carpet
 - Vinyl flooring, tiles, marble, etc.

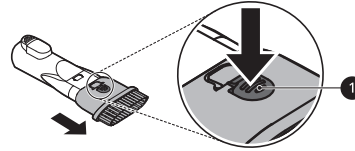
Power Punch Nozzle

This nozzle lets you clean sheets and bedding more effectively. It removes dust in bedding using strong suction and a punching motion.

- Lower the suction level when vacuuming bedding such as duvet covers to avoid the thin fabric getting sucked into the nozzle.



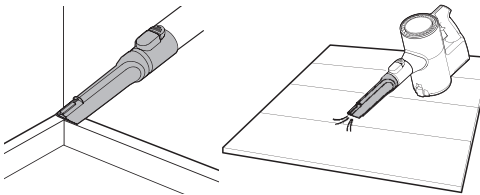
- To convert modes, press the adjustment button ❶ and push forward.



Crevice Tool

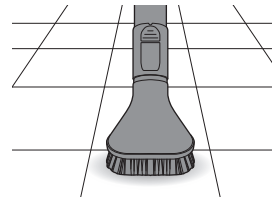
Use this tool to remove dust from corners or narrow spaces.

- Use it for areas with static electricity such as mats.
- Use it with the **Turbo** mode to clean pet hair out of furniture, mats, or tight areas like corners.



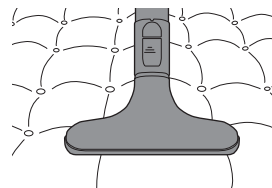
Hard Dirt Tool

Firm bristles remove solidified dirt from hard surfaces. Clean up hair or foreign objects that are entangled in carpets or rugs.



Mattress Tool

Use this tool to clean up dust and foreign objects from mattresses, delicate fabrics, and upholstery.

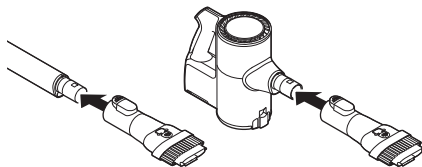


Combination Tool

Can be used in either crevice mode or brush mode for cleaning corners or small gaps where dust and dirt gather.

• Crevice Mode

Use the tool in the crevice mode to clean flat surfaces such as sofas or mattresses.



• Brush Mode

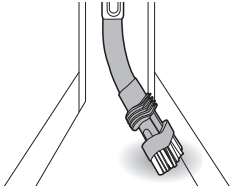
Use the tool in the brush mode to clean delicate surfaces such as frames or furniture.

Flexible Crevice Tool

This tool is flexible and its length can be adjusted, making it especially useful for cleaning inside

EN 28 OPERATION

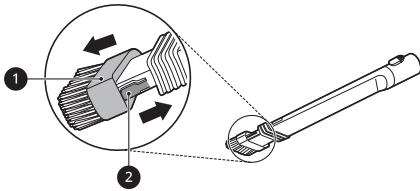
vehicles or in narrow spaces under and behind furniture where an angled tool is needed.



Using the Brush

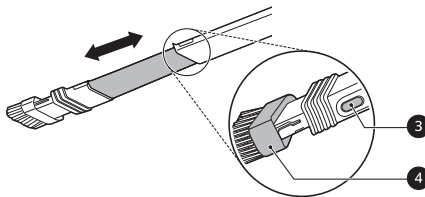
To convert the tool from crevice to brush mode, press in on the sides of the brush head **1** and pull the brush down.

- To convert back to the crevice mode, press in on the brush release button **2** and slide the brush up.



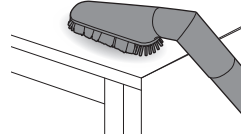
Adjusting the Length

To adjust the length of the tool, press and hold the release button **3** on the side of the tool. Pull or push on the brush head **4** to extend or retract the extension tube.



Multi-angle Tool

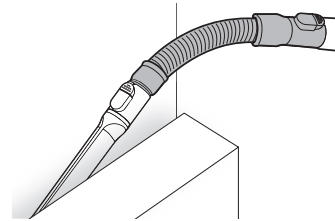
This tool has a soft brush that can be adjusted to a variety of angles, making it especially useful for cleaning vehicle consoles or the tops of furniture.



Flexible Hose Extension

Connect this flexible, extendable hose between the product body and the tools to clean hard to reach areas.

- The flexible hose extension cannot be used with the Power Drive Nozzle.



Using the Kompressor Lever

Use the Kompressor lever to compress hair and fibers inside the dust bin after vacuuming and before emptying the dust bin.

- The vacuum must be turned off before using the Kompressor lever.
- Compressing the dust clears it off the interior walls of the dust bin and allows you to vacuum for longer periods before emptying the dust bin. It also makes cleaning the dust bin easier and less messy.
- The dust bin must be at least half full for the compression plate to be effective.
- Press the Kompressor lever down several times to compress the dust and clean off the interior walls of the dust bin.

SMART FUNCTIONS

Using LG ThinQ Application

The **LG ThinQ** application allows you to communicate with the appliance using a smartphone.

LG ThinQ Application Features

- **Cleaning History**
 - Shows the cleaning history, such as monthly cleaning time, cleaning frequency, and cleaning mode, etc.

NOTE

- Assembled suction tool is displayed on the screen during cleaning.
- A notification is displayed on the screen if the pre-filter and the exhaust filter need cleaning.

• Filter Cleaning Cycle Alarm

- After using the appliance for a certain period of time, a notification is displayed on the screen of your smartphone. Clean the exhaust filter or pre-filter, if necessary.

• Cleaning Mode

- The cleaning mode you are using is displayed on the screen of your smartphone.

• Filter Cleaning Guide

- Guide to cleaning the filters.

• Smart Diagnosis™

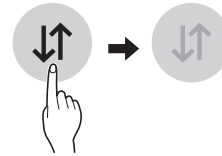
- This function provides useful information for diagnosing and solving issues with the appliance based on the pattern of use.

NOTE

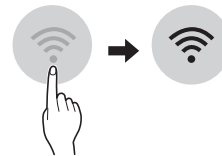
- If you change your wireless router, Internet service provider, or password, delete the connected appliance from the **LG ThinQ** application and connect it again.
- This information is current at the time of publication. The application is subject to change for product improvement purposes without notice to users.

Before Using LG ThinQ Application


- 1 Use a smartphone to check the strength of the wireless router (Wi-Fi network) near the appliance.
 - If the appliance is too far from the router, the signal becomes weak. It may take a long time to register or fail to install the application.
- 2 Turn off the **Mobile data** or **Cellular Data** on your smartphone.



- 3 Connect your smartphone to the wireless router.



NOTE

- To verify the Wi-Fi connection, check that the  icon on the control panel is lit.
- The appliance supports 2.4 GHz Wi-Fi networks only. To check your network frequency, contact your Internet service provider or refer to your wireless router manual.
- **LG ThinQ** is not responsible for any network connection problems or any faults, malfunctions, or errors caused by network connection.
- The surrounding wireless environment can make the wireless network service run slowly.

NOTE

- If the appliance is having trouble connecting to the Wi-Fi network, it may be too far from the router. Purchase a Wi-Fi repeater (range extender) to improve the Wi-Fi signal strength.
- The network connection may not work properly depending on the Internet service provider.
- The Wi-Fi may not connect or the connection may be interrupted because of the home network environment.
- If the appliance cannot be connected due to problems with the wireless signal transmission, unplug the appliance and wait about a minute before trying again.
- If the firewall on your wireless router is enabled, disable the firewall or add an exception to it.
- The wireless network name (SSID) should be a combination of English letters and numbers. (Do not use special characters.)
- Smartphone user interface (UI) may vary depending on the mobile operating system (OS) and the manufacturer.
- If the security protocol of the router is set to **WEP**, network setup may fail. Change the security protocol (**WPA2** is recommended), and connect the product again.

Installing the LG ThinQ Application

Search for the **LG ThinQ** application from the Google Play Store or Apple App Store on a smartphone. Follow instructions to download and install the application.

Connecting the Appliance to LG ThinQ

Wi-Fi Indicator Status

Indicator Status	Description
Blinking	The appliance is connecting.
ON	The appliance has finished connecting. The appliance is connected to Wi-Fi.
OFF	The appliance has been disconnected.

Connecting the Appliance Initially

Select your appliance on menu by pressing the **Add a Product (+)** button. Follow instructions in the **LG ThinQ** to connect your appliance.

Connecting Additional Users

Remove the appliance from the charging station. Follow the instructions under **Connecting the Appliance Initially**.

NOTE

- The usage history will be reset if you delete a connected appliance in **LG ThinQ**.
- If the Wi-Fi signal is weak, the appliance may be temporarily disconnected to the application. When the Wi-Fi signal moves to the normal position, the appliance is connected to the application again.


Turning Wi-Fi On/Off on the Appliance

Disconnecting from Wi-Fi

To save energy, turn off the Wi-Fi function by pressing the **Wi-Fi** button for 3 seconds while the appliance is charging on the charging station.

Reconnecting to Wi-Fi

Follow the steps below on the appliance.

- 1 Press and hold the **Wi-Fi** button for 3 seconds until the  icon blinks in the display.

- 2 Press the **Wi-Fi** button for 3 seconds again.
 - After the icon turns off, wait for a while and turn it on again.
 - The time before the icon turns on may vary depending on the network environment.

RF Radiation Exposure Statement

This equipment complies with radiation exposure limit (<4.0 W/kg for extremity (hand) exposure condition) set forth for an uncontrolled environment.

Open Source Software Notice Information

To obtain the source code under GPL, LGPL, MPL, and other open source licenses, that is contained in this product, please visit <http://opensource.lge.com>. In addition to the source code, all referred license terms, warranty disclaimers and copyright notices are available for download.

LG Electronics will also provide open source code to you on CD-ROM for a charge covering the cost of performing such distribution (such as the cost of media, shipping, and handling) upon email request to opensource@lge.com. This offer is valid for a period of three years after our last shipment of this product. This offer is valid to anyone in receipt of this information.

Smart Diagnosis Function

Use this feature to help you diagnose and solve problems with your appliance.

NOTE

- For reasons not attributable to LGE's negligence, the service may not operate due to external factors such as, but not limited to, Wi-Fi unavailability, Wi-Fi disconnection, local app store policy, or app unavailability.
- The feature may be subject to change without prior notice and may have a different form depending on where you are located.

Using LG ThinQ to Diagnose Issues

If you experience a problem with your Wi-Fi equipped appliance, it can transmit troubleshooting data to a smartphone using the **LG ThinQ** application.

- Launch the **LG ThinQ** application and select the **Smart Diagnosis** feature in the menu. Follow the instructions provided in the **LG ThinQ** application.

MAINTENANCE

Cleaning the Appliance

Before Cleaning the Appliance

To maintain the optimum suction power, the cyclonic mesh filter, the exhaust filter and the pre-filter should be cleaned regularly and washed under running water at least once a month.

- Turn off the power before cleaning the appliance.
- The frequency of cleaning varies depending on the usage environment and usage time. In a dusty environment, clean frequently.

⚠ WARNING

- Never wash the **Power Drive Nozzle**, rotating brush or product body with water. Water could reach the motor and cause electric shock or fire.
- Do not allow foreign objects to enter the motor. Doing so may cause electric shock, fire or product damage.
- Do not insert fingers or sharp objects into the motor. Doing so could cause product damage, personal injury or electric shock.

⚠ CAUTION

- Do not apply force or allow impacts to the cyclonic mesh filter. Doing so could deform the filter, compromise product performance, or cause the product to malfunction.
- If the Kompressor lever does not return to the top, remove the cyclonic mesh filter from the dust bin and clean it. A clogged or dirty filter may cause poor cleaning results.

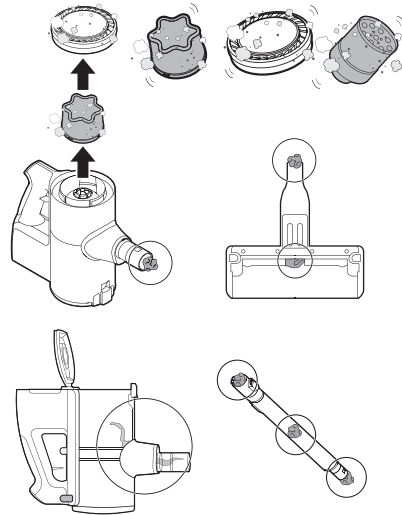
Removing Foreign Objects

If the appliance is clogged with foreign objects, the suction power changes, the motor cycles repeatedly, and the foreign objects clogging alarm icon blinks.

If clogging persists, the appliance will turn off automatically to prevent damage. Separate the

battery from the product body and remove the foreign objects before resuming use of the appliance.

- Check the inside of the product body, above the Kompressor working plate, the extension pipe, inlets, exhaust filter, pre-filter and cyclonic mesh filter for foreign objects.
- If the inlets are not completely blocked, the foreign objects clogging alarm indicator may not light up.
- If the sound of the appliance becomes loud or the cleaning results is poor, check for foreign objects.



Cleaning the Dust Bin

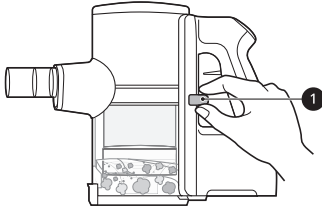
Empty and clean the dust bin after every use.

- If the dust bin is completely full of dust or the filter is clogged, the suction power may be reduced.

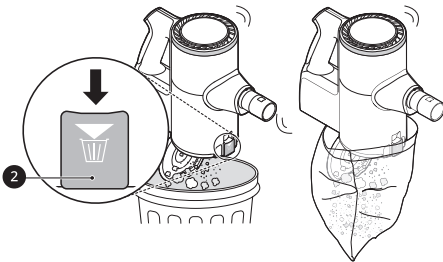
⚠ CAUTION

- Do not use the appliance without the cyclonic mesh filter installed. Doing so could damage the appliance.

- 1 Remove the battery from the product body before cleaning the dust bin.
- 2 Push down the Kompressor lever **1** several times to collect and compact the dust from the outside of the cyclonic mesh filter and the interior walls of the dust bin.
 - Foreign objects which become lodged in the cyclonic mesh filter may be difficult to dislodge with the Kompressor lever. Remove the cyclonic mesh filter and use the provided cleaning brush to clean it.

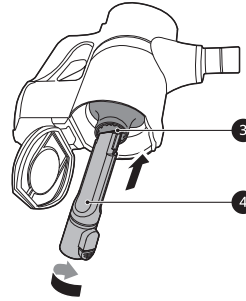


- 3 Press the dust bin cover release button **2** to open the dust bin cover. Shake the dust bin to empty it.
 - Be careful as dust or foreign objects may spill out when opening the dust bin. Empty the dust bin into a wastebasket or where dust and foreign objects can be easily removed.
 - The dust bin can be wrapped in a plastic bag to contain the dust when emptying the dust bin.



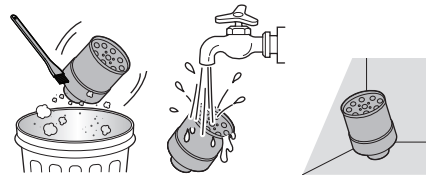
- Do not force the Kompressor lever down if foreign objects are caught around the working plate of the Kompressor system. Doing so may cause product damage.

- 4 Insert the crevice tool **4** into the cyclonic mesh filter **3** and turn it counterclockwise to remove the filter.



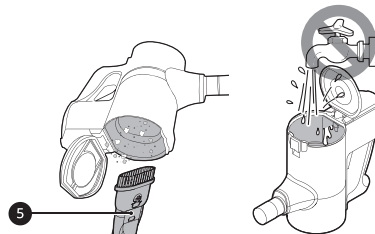
- 5 Wash the cyclonic mesh filter under running water.

- To avoid odour and the malfunction of the motor, allow the cyclonic mesh filter to dry completely in a well-ventilated area out of direct sunlight for at least 24 hours before reassembling.



- 6 Use the combination tool **5** to clean out dust or foreign objects inside the dust bin.

- Do not wash the product body or motor with water.



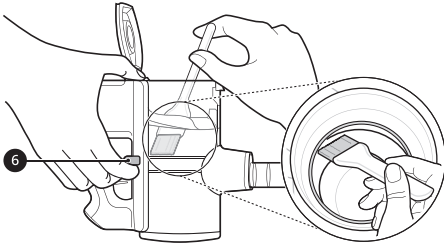
⚠ WARNING

- If the Kompressor lever does not slide down smoothly, foreign objects may be trapped between the dust bin and the cyclonic mesh filter. Clean the dust bin and cyclonic mesh filter to avoid product damage.

EN 34 MAINTENANCE

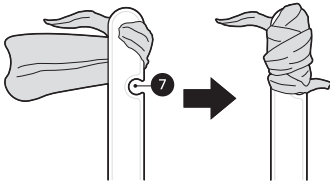
7 Turn the product body over and lift the Kompressor lever **6** up to clean the inside of the working plate with the provided cleaning brush.

- Do not push the Kompressor lever down hard. The working plate may be damaged.

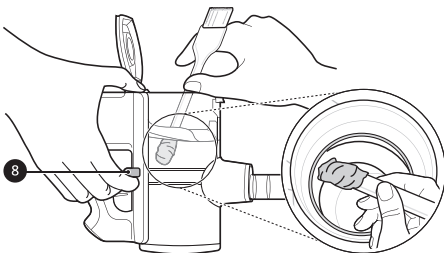


8 Turn the product body over again and shake it while pressing down the lever to remove the dust.


9 Wrap the provided cleaning brush with a wet paper towel, tucked into the slots **7** on the handle.



10 Turn the product body over, lift the Kompressor lever **8** up, and clean the inside of the working plate with the towel-wrapped brush handle.



Cleaning the Filters

Clean the exhaust filter and the pre-filter when the filter cleaning icon  lights up.

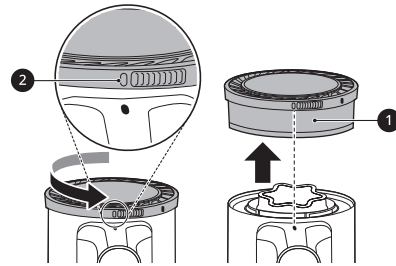
- Clean the filters more frequently if the appliance is used regularly or in areas with a lot of dust.

⚠ CAUTION

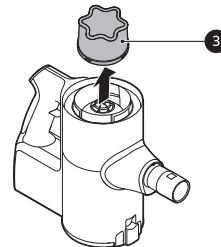
- Do not use the appliance without the exhaust filter and pre-filter installed. Doing so could result in product damage.

1 Remove the battery from the product body.

2 Rotate the exhaust filter **1** to the unlocked position **2** to separate it from the product body.

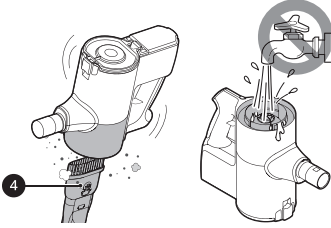


3 Lift out the pre-filter **3** from the product body.



4 Use the combination tool **4** to clean any dust off the motor.

- Do not wash the motor with water.

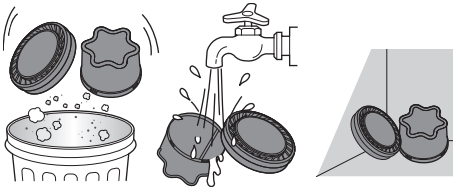


the nozzle starts to operate during cleaning, it could cause an injury.

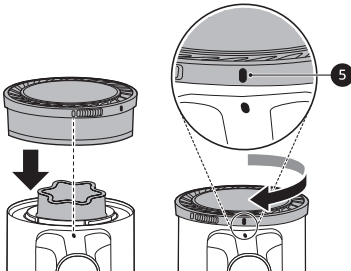
- Keep fingers away from pinch points when assembling the nozzle on the appliance or the rotating brush on the nozzle.
- Do not use the rotating brush as a wet mop. It may cause product damage.
- Do not rinse or submerge the rotating brush or nozzle in water. It may cause product damage.

5 Clean filters by brushing the dust off and wash them in running water at least once a month.

- To avoid odour and the malfunction of the motor, allow the exhaust filter to dry completely in a well-ventilated area out of direct sunlight for at least 24 hours before reassembling.



6 Insert the dried pre-filter and rotate the exhaust filter to the locked position ⑤ to reassemble it on the product body.



Cleaning the Nozzles

Clean the nozzle and rotating brush regularly.

⚠ CAUTION

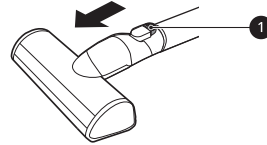
- Always separate the nozzle from the product body or remove the battery before cleaning. If

Cleaning the Multi-Surface Power Drive Nozzle

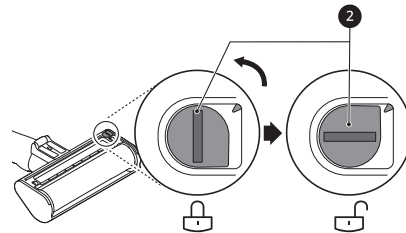
Clean the brush and roller heads before each use.

- If the brush contains foreign objects, the brush may not spin or a noise may occur during operation.

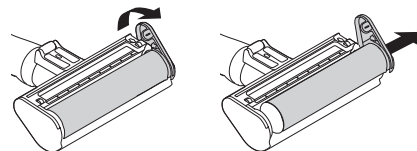
1 Press the nozzle release button ① to remove the nozzle from the extension pipe or product body.



2 Turn the nozzle upside down and rotate the cover lock slot ② counterclockwise.

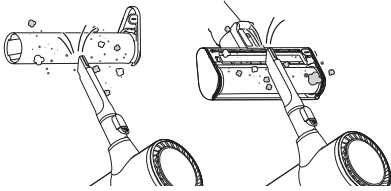


3 Pull the brush cover forward and pull the brush out.

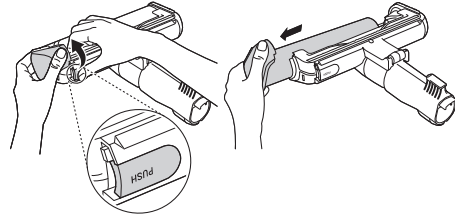


EN 36 MAINTENANCE

- 4** Attach the crevice tool to the product body and use the vacuum to remove foreign objects and dust from the brush and the bottom of the nozzle.

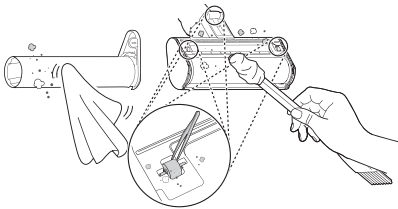


- 2** Turn the nozzle upside down and remove the rotating brush while holding down the **PUSH** button on the nozzle.

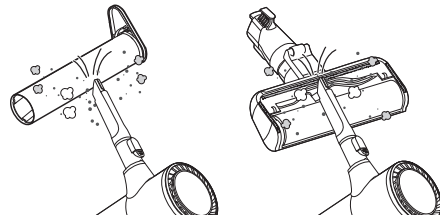


- 5** Use a damp towel or cloth to remove any remaining foreign objects and dust from the brush and the bottom of the nozzle. Remove foreign objects, debris and hair from all Rollers of the nozzles using tweezers.

- Wrap the handle of the cleaning brush with a wet towel or cloth and use it to clean the rotating brush and nozzle.



- 3** Attach the crevice tool to the product body and use the vacuum to remove foreign objects and dust from the brush and the bottom of the nozzle.



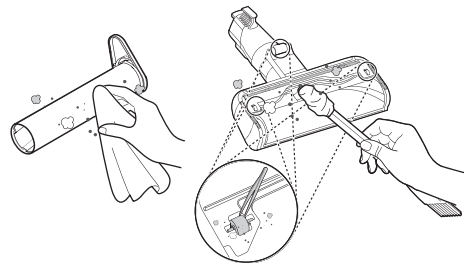
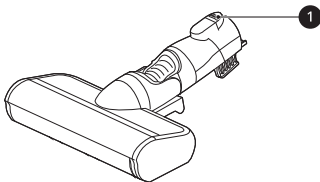
- 6** Slide the brush back into the nozzle and rotate the cover back into place. Turn the cover lock clockwise to lock the cover.

- 4** Use a damp towel or cloth to remove any remaining foreign objects and dust from the brush and the bottom of the nozzle. Remove foreign objects, debris and hair from all Rollers of the nozzles using tweezers.

- Wrap the handle of the cleaning brush with a wet towel or cloth and use it to clean the rotating brush and nozzle.

Cleaning the Power Drive Floor Nozzle

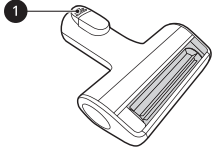
- 1** Press the nozzle release button **1** to remove the nozzle from the extension pipe or product body.



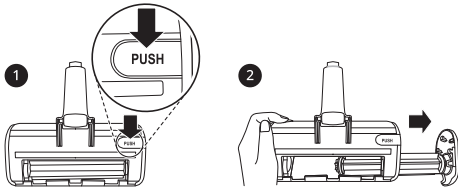
- 5** Slide the brush back into the nozzle until it clicks into place.

Cleaning the Power Drive Mini Nozzle

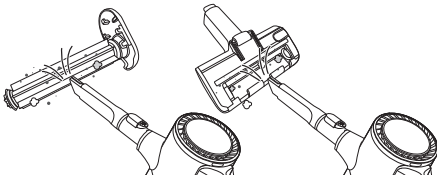
- 1 Press the nozzle release button ❶ to remove the nozzle from the extension pipe or product body.



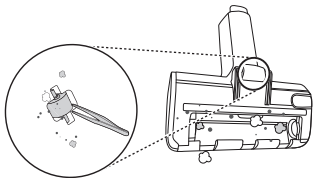
- 2 Remove the rotating brush while holding down the **PUSH** button on the nozzle.



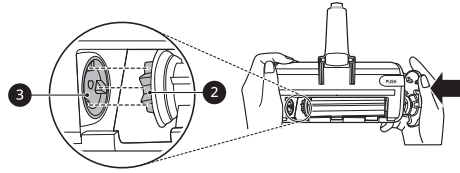
- 3 Attach the crevice tool to the product body and use the vacuum to remove foreign objects and dust from the brush and the bottom of the nozzle.



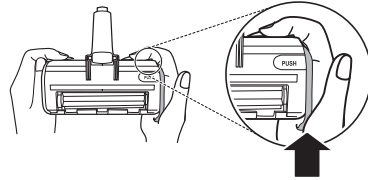
- 4 Use a damp towel or cloth to remove any remaining foreign objects and dust from the brush and the bottom of the nozzle. Remove foreign objects, debris and hair from all Rollers of the nozzles using tweezers.



- 5 Insert the left side of the brush ❷ into the groove ❸ inside the nozzle.



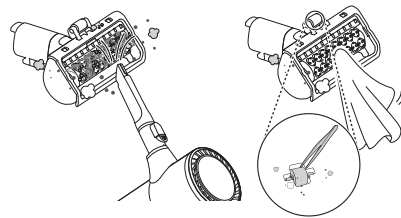
- 6 Press the cover of the brush to lock the brush until a clicking sound is heard.



Cleaning the Power Punch Nozzle

- 1 Press the nozzle release button to remove the nozzle from the extension pipe or product body and turn the nozzle upside down.

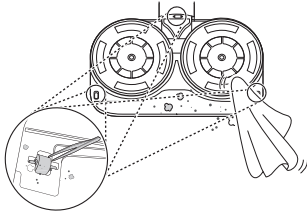
- 2 Attach the crevice tool to the product body and use the vacuum to remove foreign objects and dust from the bottom of the nozzle. Use a damp towel or cloth to remove any remaining foreign objects and dust from the bottom of the nozzle. Remove foreign objects, debris and hair from all Rollers of the nozzles using tweezers.



EN 38 MAINTENANCE

Cleaning the Mop Nozzle

- 1** Press the nozzle release button to remove the mop nozzle from the extension pipe and turn the nozzle upside down.
- 2** Use a damp towel or cloth to remove any remaining foreign objects and dust from the bottom of the mop nozzle. Remove foreign objects, debris and hair from all Rollers of the nozzles using tweezers.



TROUBLESHOOTING

Before Calling for Service

Operation

Symptoms	Possible Cause & Solution
The appliance does not operate.	Battery is fully discharged. <ul style="list-style-type: none"> Charge the battery.
	Appliance is turned off. <ul style="list-style-type: none"> Press the Power button to turn on the appliance.
Suction power is too weak.	Dust bin is full of dust. <ul style="list-style-type: none"> Empty the dust bin.
	Filters are clogged. <ul style="list-style-type: none"> Clean the pre-filter and the exhaust filter.
	Inlet is clogged. <ul style="list-style-type: none"> Remove any foreign objects from inside the product body or the extension pipe.
	Foreign object is on rotating brush, or in inlet port. <ul style="list-style-type: none"> Remove any foreign objects (thread, hair) from the rotating brush or the inlet port.
The product body does not appear to be charging.	Power adapter is not connected to the charging station. <ul style="list-style-type: none"> Plug the adapter firmly into the charging station.
	Power cord is unplugged. <ul style="list-style-type: none"> Plug the power cord securely into the charging station.
	Foreign object is on the charging terminals. <ul style="list-style-type: none"> Remove dirt or foreign objects from the charging terminals with a dry cloth.
Hot air is coming from the product body.	Motor is cooling. <ul style="list-style-type: none"> If the appliance is running normally, the hot air is a result of the motor cooling and is not a sign of malfunction.
The Kompressor lever does not return.	Foreign objects which become lodged in the cyclonic mesh filter may be difficult to dislodge with the Kompressor lever. <ul style="list-style-type: none"> Remove the cyclonic mesh filter and use the provided cleaning brush to clean it.

EN 40 TROUBLESHOOTING

Symptoms	Possible Cause & Solution
<p>A strange odour is coming from the appliance.</p>	<p>Appliance was purchased within the last 3 months.</p> <ul style="list-style-type: none"> The cleaner may emit a smell of rubber for about 3 months after purchase.
	<p>Dust bin is full of dust.</p> <ul style="list-style-type: none"> The dust in the bin may cause some odour. Empty the bin and clean it.
	<p>Foreign object is on the filter.</p> <ul style="list-style-type: none"> The filter may emit an odour if it has not been cleaned for some time. Clean the pre-filter and exhaust filter regularly.
	<p>Pre-filter, Fine dust filter or the Cyclonic Mesh Filter were installed while damp or wet.</p> <ul style="list-style-type: none"> Wash the filters with running water. To avoid odour, allow the pre-filter to dry completely in a well-ventilated area out of direct sunlight for at least 24 hours before reassembling.
	<p>Exhaust filter was installed while damp or wet.</p> <ul style="list-style-type: none"> Wash the exhaust filter with running water. To avoid odour, allow the exhaust filter to dry completely in a well-ventilated area out of direct sunlight for at least 24 hours before reassembling.
<p>The appliance makes too much noise.</p>	<p>Vacuum cleaner is running in Turbo mode.</p> <ul style="list-style-type: none"> The motor may be louder at the higher suction power settings. This is normal.
<p>The appliance turns off unexpectedly or by itself after the motor speed fluctuates repeatedly.</p>	<p>Battery is not fully charged.</p> <ul style="list-style-type: none"> The battery must be fully charged before cleaning. If the problem persists when the battery is fully charged and the pipes and attachments are clear from obstructions, contact an LG customer information centre for service.
	<p>Foreign object is in the product body, extension pipe, inlet port or nozzle.</p> <ul style="list-style-type: none"> Remove any foreign objects from the product body, extension pipe, inlet port or nozzle.
	<p>Filters are clogged.</p> <ul style="list-style-type: none"> Clean the pre-filter and the exhaust filter.
<p>The rotating brush does not rotate.</p>	<p>Brush is improperly installed.</p> <ul style="list-style-type: none"> Remove the brush, clean it if necessary and attach it again.
	<p>Foreign object is on rotating brush.</p> <ul style="list-style-type: none"> Remove any foreign objects from the rotating brush.

Mop Nozzle

Symptoms	Possible Cause & Solution
The mop pad attachment plate does not rotate.	Mop pads are improperly installed. <ul style="list-style-type: none"> Remove the mop pads, clean them if necessary and attach them again.
	Mop nozzle is pressed too hard against the floor. <ul style="list-style-type: none"> The mop attachment plate stops automatically to protect the product. This is not a failure. Attach the mop pads securely to the mop attachment plate and press the power button to resume use.
	Foreign object is between mop attachment plate and mop pads. <ul style="list-style-type: none"> Remove foreign objects from the mop nozzle attachment plate and press the power button to resume use.
There is no water coming out of the mop nozzle.	Water tank is empty. <ul style="list-style-type: none"> Fill the water tank. Remove the battery or detach the nozzle before filling the water tank.
	Water tank is improperly attached to mop nozzle. <ul style="list-style-type: none"> Properly attach the water tank to the mop nozzle. Remove the battery or detach the nozzle before properly securing the water tank to the nozzle.
	Water supply adjustment button is set to STOP. <ul style="list-style-type: none"> Press the High or Low water adjustment button all the way down. The water will not come out if the button is set to STOP.
There is moisture in the water tank.	Water tank is not allowed to dry completely after use. <ul style="list-style-type: none"> Empty the water tank, set it out of direct sunlight, and allow it to dry completely after use.
A strange odour is coming from the appliance.	Foreign object is on the dust inlet of the mop nozzle. <ul style="list-style-type: none"> Wet dust in the mop nozzle may result in odour. Make sure to wipe the dust inlet of the mop nozzle with a wet wipe after each use.
Using the mop nozzle makes the floor dirtier.	Mop pads are not cleaned properly after use. <ul style="list-style-type: none"> Clean the mop pads thoroughly after each use. Using soiled mop pads may make the floor dirtier.
The appliance makes too much noise.	This is the sound generated when the pump at the inlet of the mop is operating. <ul style="list-style-type: none"> This is normal.
	The mop pads were improperly attached on the plates. <ul style="list-style-type: none"> Align and attach the centre of the mop pad with the centre of the mop attachment plate.

Wi-Fi

Symptoms	Possible Cause & Solution
Your home appliance and smartphone are not connected to the Wi-Fi network.	Battery is fully discharged. <ul style="list-style-type: none">• Charge the battery, then register your appliance on LG ThinQ.
	The password for the Wi-Fi that you are trying to connect to is incorrect. <ul style="list-style-type: none">• Find the Wi-Fi network connected to your smartphone and remove it, then register your appliance on LG ThinQ.
	Mobile data for your smartphone is turned on. <ul style="list-style-type: none">• Turn off the Mobile data of your smartphone and register the appliance using the Wi-Fi network.
	The wireless network name (SSID) is set incorrectly. <ul style="list-style-type: none">• The wireless network name (SSID) should be a combination of English letters and numbers. (Do not use special characters.)
	The router frequency is not 2.4 GHz. <ul style="list-style-type: none">• Only a 2.4 GHz router frequency is supported. Set the wireless router to 2.4 GHz and connect the appliance to the wireless router. To check the router frequency, check with your Internet service provider or the router manufacturer.
	The distance between the appliance and the router is too far. <ul style="list-style-type: none">• If the distance between the appliance and the router is too far, the signal may be weak and the connection may not be configured correctly. Move the location of the router so that it is closer to the appliance.

Memo

Memo

Memo

LG CordZero™