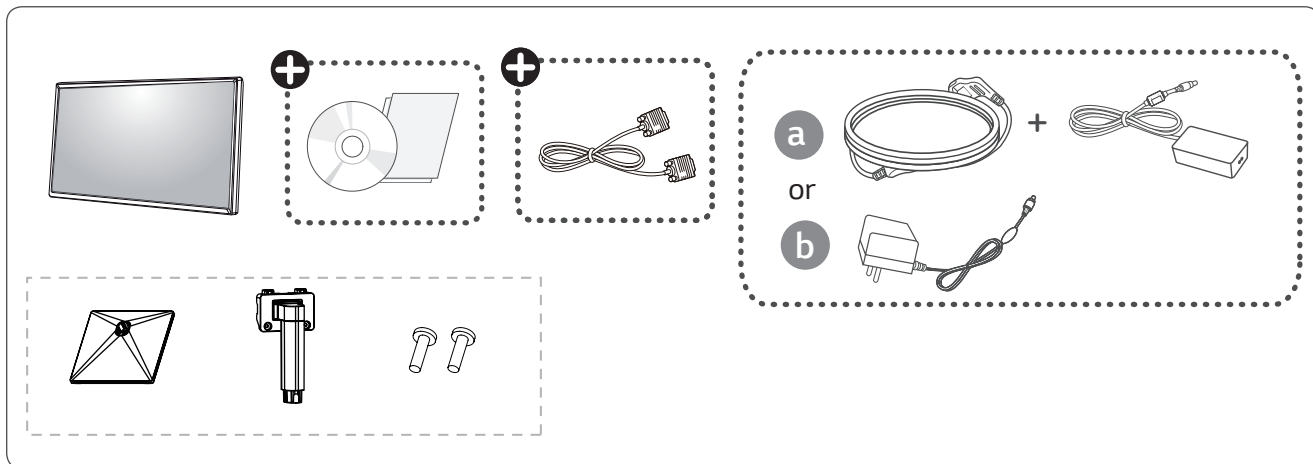


Quick Start Guide

LED LCD Monitor (LED Monitor)
20MK4 series



www.lg.com



English Read Owner's Manual.



English It is recommend that use the supplied components.

+ English Depending on country

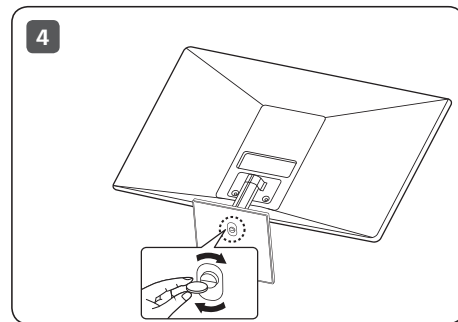
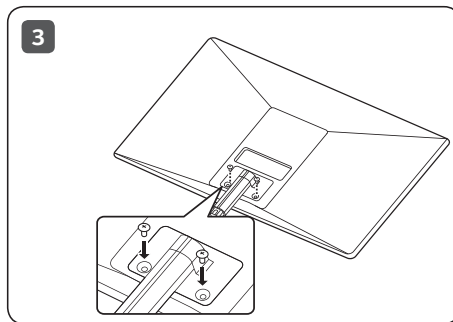
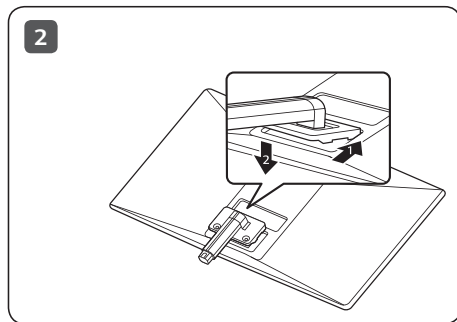
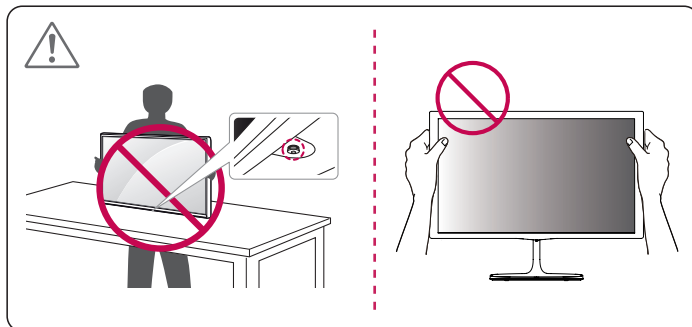
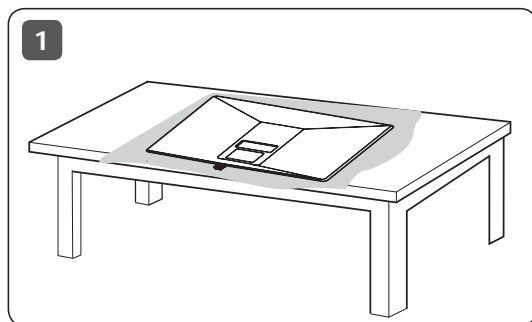
Image may vary depending on model.

Unpacking

Check your product box for the following items. If there are any missing accessories, contact the local dealer where you purchased your product. The illustrations in this manual may differ from the actual product and item.

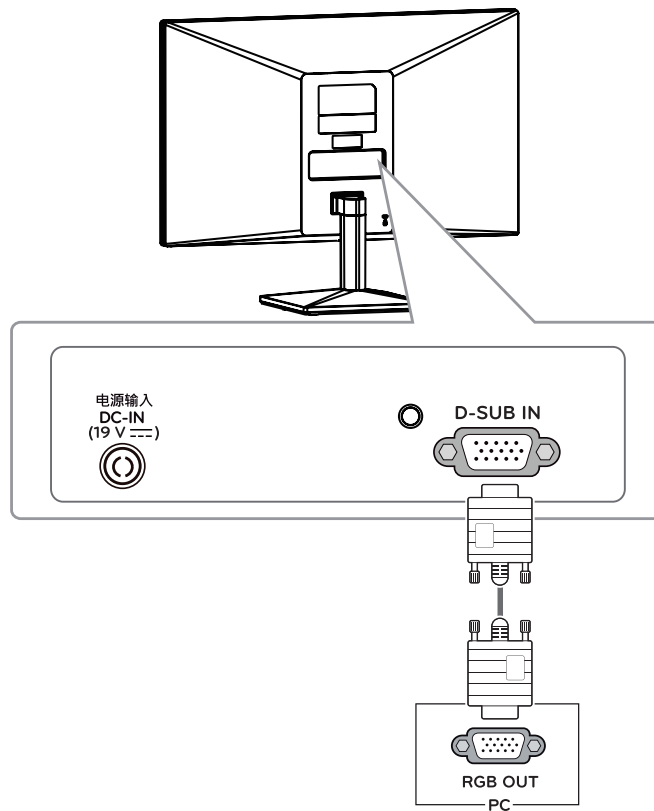


P/No: MBM66205788 (1802-REV00)



CAUTION

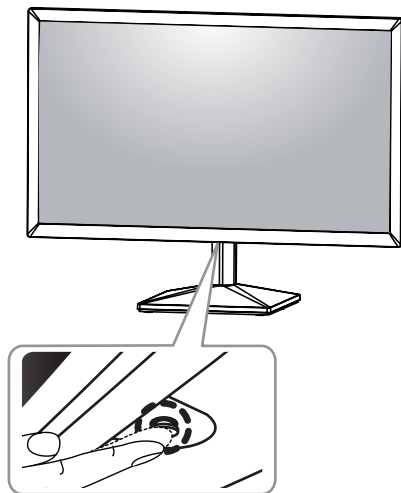
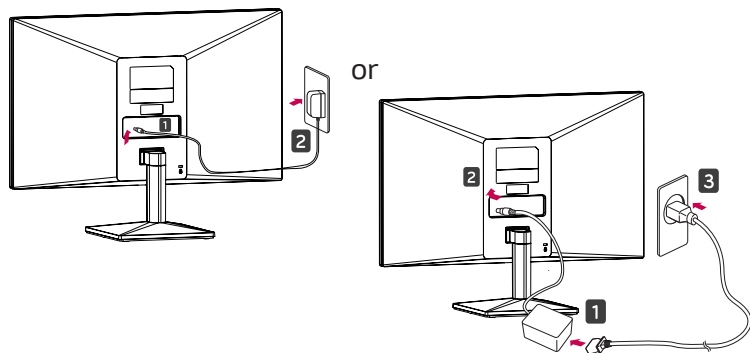
Image shown may differ from your monitor.
When attaching the stand to the monitor set, place the screen facing down on a cushioned table or flat surface to protect the screen from scratches.



English

- Using a DVI to HDMI cable may cause compatibility issues.
- Make sure to use the supplied cable. Otherwise, this may cause the device to malfunction.

Note : All Connection cables shown in the picture are not included along with the monitor set.



- Image may vary depending on models.