



# LG

Life's Good

User guide

# LG CAM Plus

CBG-700

Compatible with G5 worldwide except  
Korea, Canada and AT&T-powered G5

ENGLISH

REV 1.1 PHL

All rights reserved. LG Electronics Inc., 2016

**Note:** Please read all information carefully prior to  
using the LG CAM Plus for best performance and to  
prevent product damage.

## Product Overview

The LG CAM Plus is a camera grip and extra battery that can be attached to the bottom of your LG G5.

- With the LG CAM Plus, you can use your LG G5 like a digital camera. Use it to take pictures by pressing the shutter button and zooming in and out. Half-press the shutter button to use the half-shutter function.
- The LG CAM Plus is equipped with a 1200 mAh battery that can be used as an extra battery when using the camera.

### Open Source Software Notice Information

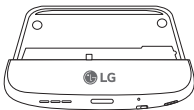
To obtain the source code under GPL, LGPL, MPL, and other open source licenses, that is contained in this product, please visit <http://opensource.lge.com>. In addition to the source code, all referred license terms, warranty disclaimers and copyright notices are available for download. LG Electronics will also provide open source code to you on CD-ROM for a charge covering the cost of performing such distribution (such as the cost of media, shipping, and handling) upon email request to [opensource@lge.com](mailto:opensource@lge.com). This offer is valid for three (3) years from the date on which you purchased the product.

## Important Safety Information

- Always use genuine products. Only use this product for the intended purpose.
- Using or connecting non-genuine products may shorten the product's lifespan or cause an explosion. Doing so may also damage the product and thereby voids the service warranty.
- If you insert a module that is not compatible with your service provider (for example, a module bought from another service provider or in an area that is not covered by your service provider), your device does not operate normally.
- Do not disassemble the product or allow it to be crushed. Doing so may cause electric shock, short circuit or fire.
- Applying heavy pressure to the product may damage it.
- Some functions of this product may be damaged, or its appearance may be altered or impaired, if it is bent or crushed and not repaired correctly.
- To prevent damage, be careful not to drop the product on hard surfaces or subject it to severe shock.
- Keep the product away from water, alcohol, benzene or other liquids.
- Do not use or store the product in extreme temperatures. Do not leave the product in direct sunlight for long periods of time. Doing so may cause damage or an explosion.
- Do not use alcohol, benzene, thinners or detergents to clean the product. Doing so may cause a fire.
- Use a soft cloth to wipe the product.
- Do not place the product near metal objects, such as jewellery, keys, coins, nails, or clocks. If the product short-circuits, there is a risk of explosion.
- Keep the product out of the reach of small children and pets. Do not put the product in your mouth or subject it to severe shock. There is a risk of electric shock, explosion, or suffocation.

- Do not connect or insert conductive materials (pieces of metal, pencil leads, etc.) into the connectors.
- Do not cover or wrap the product with a blanket while using the product.
- The product may become hot after long periods of use. Avoid touching the product while it is hot as it could cause a low-temperature burn.
- Do not dispose of the product as household waste. Doing so may cause a fire or be harmful to the environment.
- For your safety, do not remove this product's battery.
- If you must replace the battery, take the device to your nearest authorised LG Electronics service centre for assistance.
- The li-ion battery is hazardous component which can cause injury.
- Battery replacement by a non-qualified person can cause damage to your device.

## Product Components



LG CAM Plus

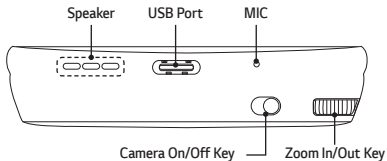


User guide

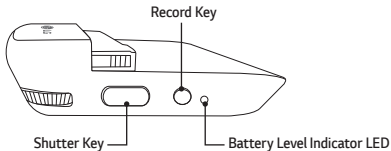
- If there are any missing components, contact the retailer from whom you purchased the product.
- Some items are subject to change without prior notice.
- The appearance and specifications of the product are subject to change without prior notice to improve performance.

## Product Description

### Front



### Side



Some functions may not be available depending on the product specifications.

## Connections

### Inserting the Battery

- 1 Align the arrows on both the battery and the module and firmly connect the battery terminals to the module.



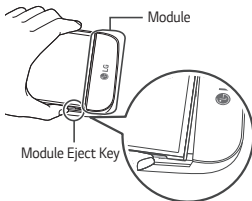
- 2 Align the battery with the lower edge and carefully slide the module back into the device.



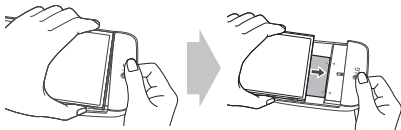
- Never press the Module Eject Key when inserting the module into the device.
- When inserting the battery into the device, make sure the battery is attached to the module.

## Removing the Battery

1 Press the Module Eject Key to partly eject the module from the device.

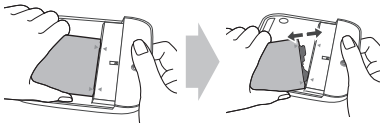


2 Grip the middle of the ejected module and pull it out.





3 Hold the battery and module with both hands and separate them from one another in an outward arc (as indicated below) to disconnect the battery terminals.



- Do not detach the module while it is in use.
- Immediately attach the module to the main unit if it becomes loose or detached during use.
- Be careful to not hurt your hands or fingers when attaching or detaching the module.
- Be careful to not be injured by the edges of the product or the module.
- Make sure the battery and the module are properly inserted. Otherwise, the product may be damaged or fail to turn on.
- Failing to follow the instructions in this user guide may result in damage to the product.

## Instructions

- This product will not operate normally if your G5 and LG CAM Plus are supported by different countries or operators.
- The LG CAM Plus cannot be operated while the USB is connected (data communication and charging are still available).
- If you press the Camera On/Off, Shutter or Recording buttons, the low-capacity battery in the LG CAM Plus will charge your LG G5 for some time. The charging feature is not available when the LG G5's battery is completely empty (power off).
- OTG devices that are connected to the LG CAM Plus will not be recognised (OTG is not supported).
- The product may not be compatible with camera apps available on online marketplaces.

## LED Notifications

- The LED light turns red when charging. It turns green when fully charged.
- After the LG CAM Plus is connected to the phone, the Battery Level Indicator LED will turn red if the battery level is at 10% or less, and the LED will blink if the battery level is at 5% or less. (The LED will remain off if it is at 11% or more.)

## About Firmware Upgrades


- Firmware upgrades are available through CAM Plus Manager, which can be downloaded and installed from Google Play™ Store (Supported OS: Android™ 6.0 [Marshmallow OS] or above).
- Firmware upgrade is also available using the LG Friends Manager app.


### **Information about Burst Shot feature support**

The following Burst Shot feature, which uses the LG CAM Plus, will be made available through a future G5 software upgrade.

- **Burst Shot**

Take continuous shots to create moving photos.

Tap and hold  on the Auto mode screen, or tap and hold the Shutter button on the LG CAM Plus.

Continuous shots are taken at a fast speed while  or the Shutter button is held down.

## Limited Warranty

SUBJECT TO THE CONDITIONS OF THIS LIMITED WARRANTY, LG ELECTRONICS WARRANTS THIS PRODUCT TO BE FREE FROM DEFECTS IN DESIGN, MATERIAL AND WORKMANSHIP AT THE TIME OF ITS ORIGINAL PURCHASE BY A CONSUMER, AND FOR A SUBSEQUENT PERIOD OF SIX (6) MONTHS. SHOULD YOUR PRODUCT NEED WARRANTY SERVICE, PLEASE RETURN IT TO THE DEALER FROM WHOM IT WAS PURCHASED OR CONTACT YOUR LOCAL LG ELECTRONICS CONTACT CENTRE TO GET FURTHER INFORMATION.









[www.lg.com](http://www.lg.com)

Any modifications or changes to this manual due to typographical errors or inaccuracies of stated information shall only be made by LG Electronics Inc.