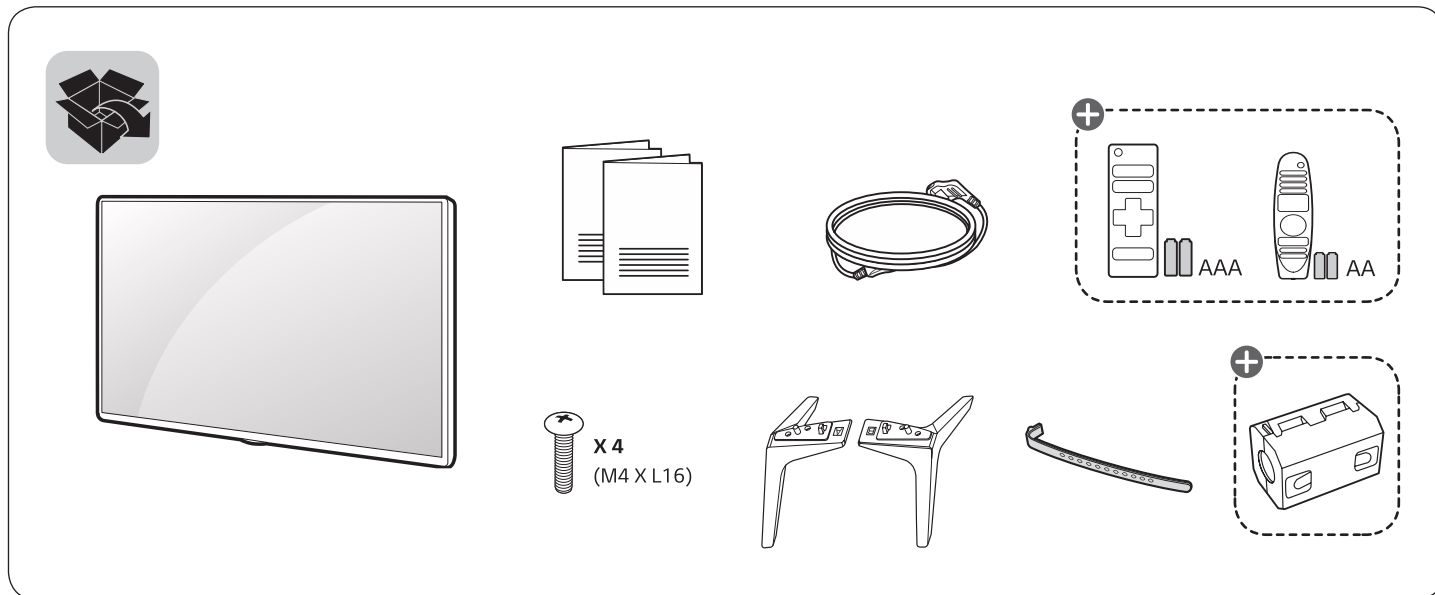


Quick Start Guide

LED TV
LJ61**
LJ62**



Unpacking

Check your product box for the following items. If there are any missing accessories, contact the local dealer where you purchased your product. The illustrations in this manual may differ from the actual product and item.

*Image may vary depending on models

⊕ : Depending on model



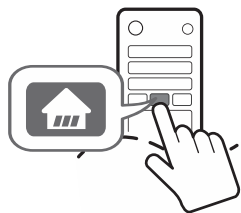
www.lg.com



English

- Read **Safety and Reference.**
- For the power supply and power consumption, refer to the label attached to the product.

USING THE USER GUIDE



Press the (🏠) button
To access home button.



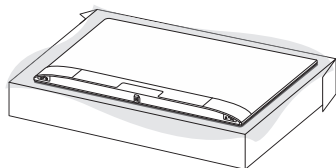
Navigate & Select
User Guide.



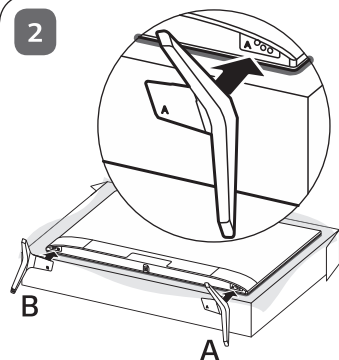
Refer User Guide for
Detail information



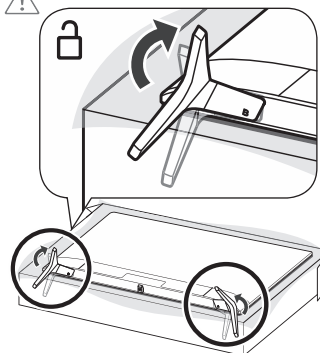
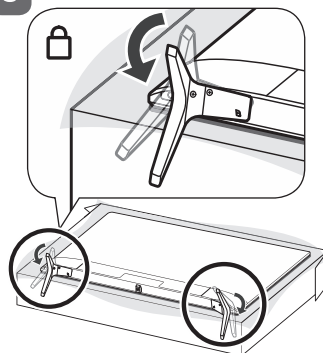
1



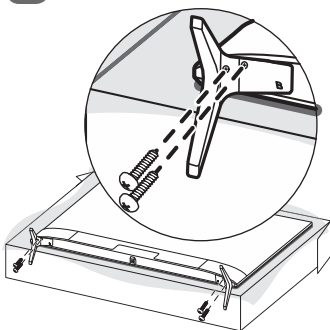
2



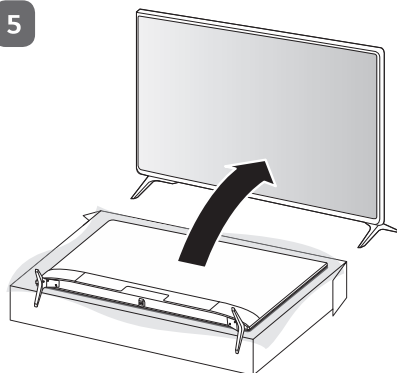
3



4



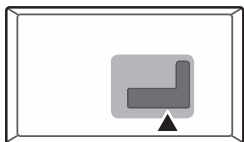
5



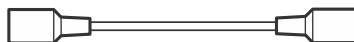
CAUTION

Image shown may differ from your TV.

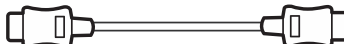
When attaching the stand to the TV set, place the screen facing down on a cushioned table or flat surface to protect the screen from scratches.



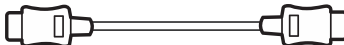
ANTENNA/
CABLE IN



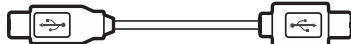
HDMI IN



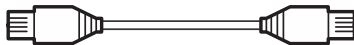
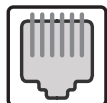
HDMI IN/ARC



USB IN

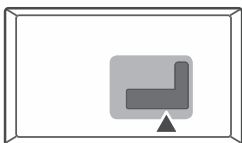


LAN



NOTE

Image shown may vary depending on model.
All connection cables & devices shown in the picture are not included along with the TV set.



H/P OUT



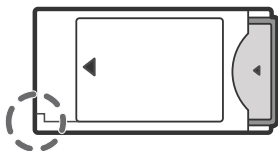
Satellite IN



OPTICAL DIGITAL
AUDIO OUT



PCMCIA CARD SLOT



⊕ : Depending on model

ARC (Audio Return Channel)

- An external audio device that supports SIMPLINK and ARC must be connected using HDMI IN (ARC) port.
- When connected with a high-speed HDMI cable, the external audio device that supports ARC outputs SPDIF audio without additional audio cable and supports the SIMPLINK function.

! NOTE

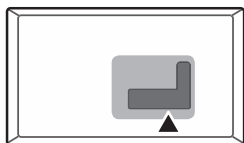
Image shown may vary depending on model.
All connection cables & devices shown in the picture are not included along with the TV set.

! NOTE

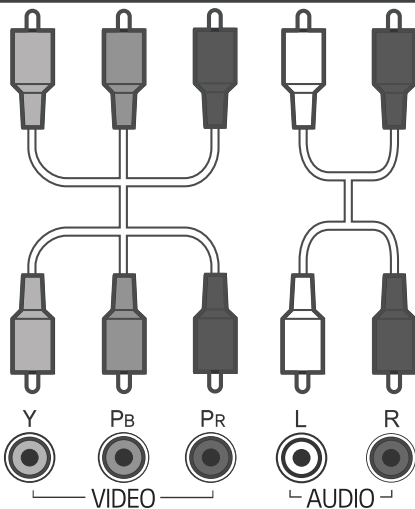
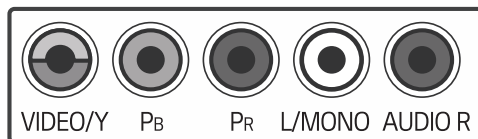
Some USB Hubs may not work. If a USB device connected using a USB Hub is not detected, connect it to the USB port on the TV directly.
Connect the external power source if your USB is needed.

! NOTE

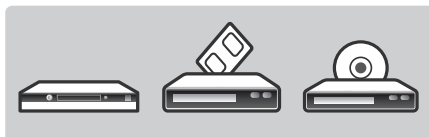
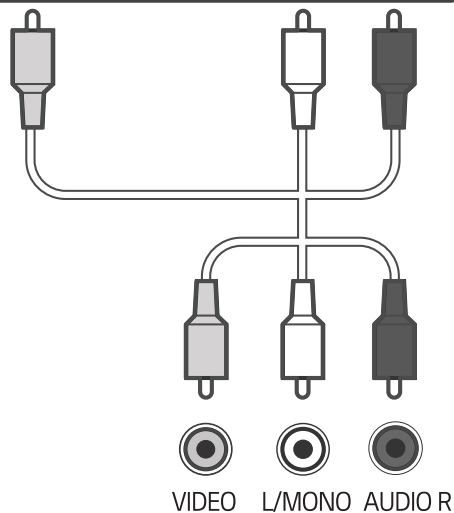
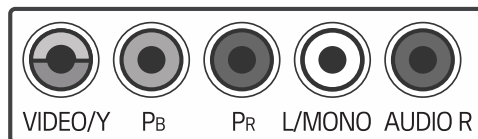
- Do not look into the optical output port. Looking at the laser beam may damage your vision.
- Audio with ACP (Audio Copy Protection) function may block digital audio output.



COMPONENT IN

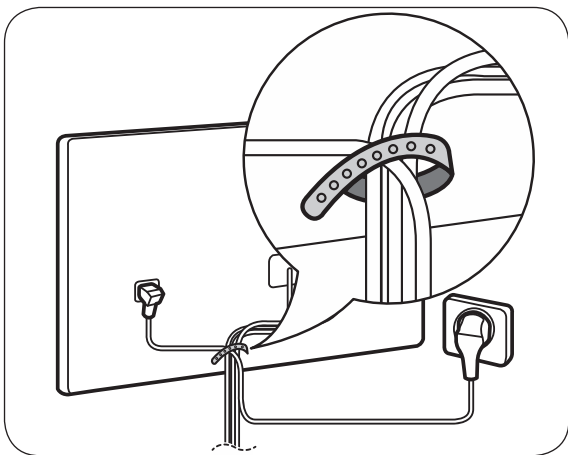


AV IN



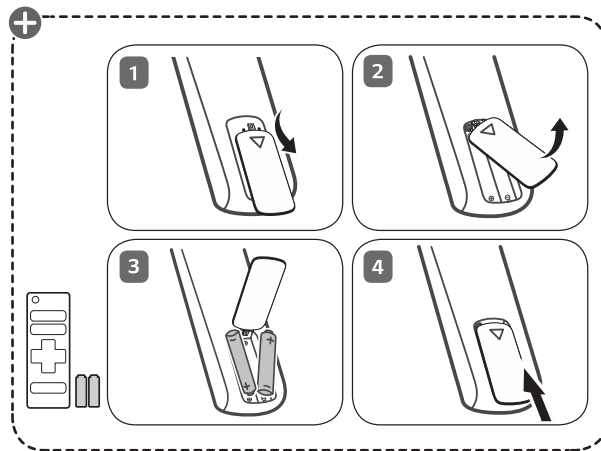
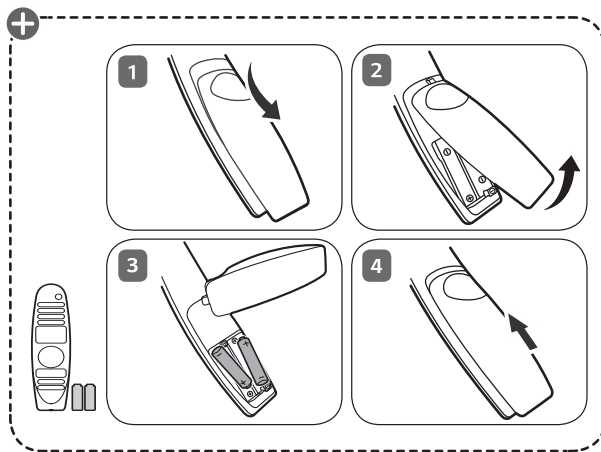
NOTE

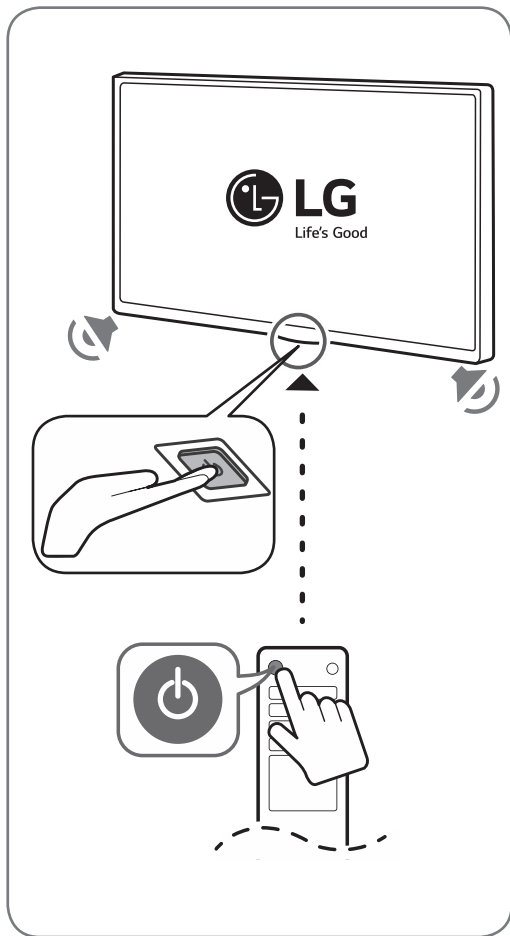
Image shown may vary depending on model.
All connection cables & devices shown in the picture are not included along with the TV set.



NOTE

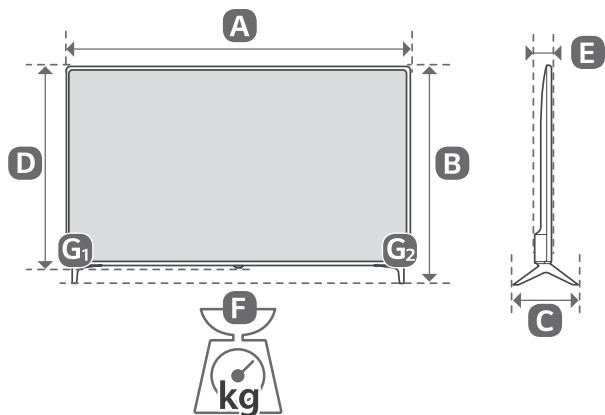
Image shown may vary depending on model.





NOTE

Image shown may vary depending on model.



	A (mm)	B (mm)	C (mm)	D (mm)	E (mm)	F (kg)	F - (G₁ + G₂) (kg)
43LJ610V-TA 43LJ617V-TB 43LJ614T-TA 43LJ617T-TB 43LJ610Y-TA 43LJ620T-TA	974	625	220	571	79.4	9.3	9.2
49LJ610V-TA 49LJ617V-TB 49LJ614T-TA 49LJ617T-TB 49LJ610Y-TA 49LJ620T-TA	1107	701	235	645	79.4	11.42	11.30
Power requirement.					AC 100-240 V ~ 50 / 60 Hz		

NOTE

Image shown may vary depending on model.



MF_69446161