



SIMPLE MANUAL

Wireless Sound Bar

To view the instructions of advanced features,
visit <http://www.lg.com> and then download Owner's Manual.
Some of the content in this manual may differ from your unit.

MODEL
SH3B



www.lg.com

Copyright © 2017 LG Electronics. All Rights Reserved

ENGLISH

DEUTSCH

FRANÇAIS

NEDERLANDS

SLOVENŠČINA

ITALIANO

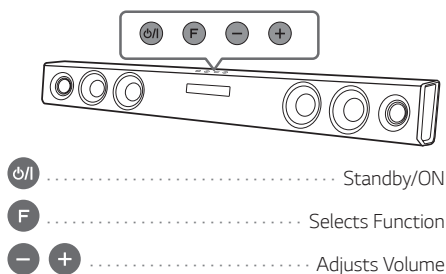
ESPAÑOL

ΕΛΛΗΝΙΚΑ

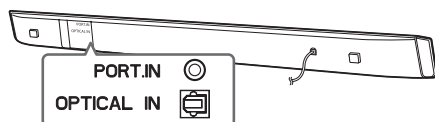
PORTUGUÊS



Front Panel



Rear Panel



1

Subwoofer Connection

Place the wireless subwoofer near the sound bar and follow steps below.

- 1 Connect the power cord of wireless subwoofer to the outlet.
- 2 Turn on the sound bar :
The sound bar and wireless subwoofer will be **automatically** connected. The subwoofer's yellow - green LED turns on.

Subwoofer Connection Manually

- 1 Reset the subwoofer
If the yellow - green LED on the subwoofer blinks quickly, skip this step and go to 2
 - Press and hold **PAIRING** button for 5 seconds.
 - The LED lights up alternately in red and yellow - green.
 - Plug out the power cord. After the LED turns off completely, plug in the power cord again.

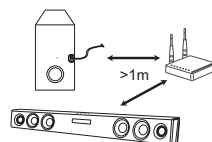
When the reset is completed, the subwoofer's yellow - green LED blinks quickly.

- 2 Reset the sound bar
 - Adjust volume to minimum until the red LED on the sound bar lights up for a while.
 - Press and hold **Mute** button on the remote control for 3 seconds.
 - The red LED on the sound bar blinks quickly.
 - Turn the sound bar's power off and on while the subwoofer's yellow - green LED blinks.

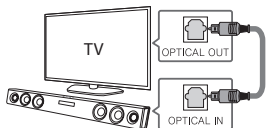
When the connection is completed, you can see the yellow - green LED on the subwoofer.



Keep the sound bar and the subwoofer away from the device (ex. wireless router, microwave oven, etc.) over 1m to prevent wireless interference.

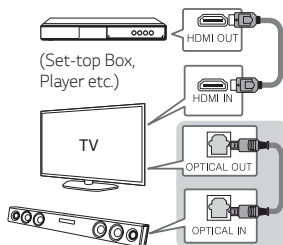


- 1 Connect the sound bar to the TV using Optical cable.
- 2 Set up [External Speaker (Optical)] on your TV setting menu.



Additional Device Connection

- 1 Connect to the external device as follows.



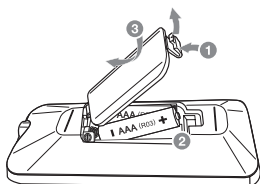
- 2 Set the input source by pressing **F** on the remote control or unit repeatedly.

Remote control



ASC/STANDARD/CINEMA : Selects sound effect.
 DRC ON/OFF : Makes comfortable sound at Dolby Digital.
 WOOFLER LEVEL +/- : Adjusts the volume level of subwoofer.
 AUTO POWER ON/OFF : Automatically turns on by an input source.

Replacement of battery



Specification

Power requirements	Refer to the main label.
Power consumption	Refer to the main label. Networked standby : 0.5 W (If all network ports are activated.)
Dimensions (W x H x D)	Approx. 950 mm x 71 mm x 47 mm
Net Weight	Approx. 2.47 kg
Amplifier (Total RMS Output power)	300 W

Design and specifications are subject to change without notice.

How to disconnect the wireless network connection or the wireless device

Set up the AUTO POWER ON/OFF function to off and turn off the unit.

Declaration of Conformity



Hereby, LG Electronics declares that the radio equipment type Wireless Sound Bar is in compliance with Directive 2014/53/EU. The full text of the EU declaration of conformity is available at the following internet address:

<http://www.lg.com/global/support/cedoc/cedoc#>

For consideration of the user, this device should be installed and operated with a minimum distance of 20 cm between the device and the body.

Frequency range	Output power (Max.)
2401 to 2481 MHz	10 dBm
2402 to 2480 MHz	10 dBm
2403 to 2478 MHz	10 dBm

