



SIMPLE MANUAL

Mini Hi-Fi System

ENGLISH

To view the instructions of advanced features,
visit <http://www.lg.com> and then download Owner's Manual.
Some of the content in this manual may differ from your unit.

MODEL
CM9960

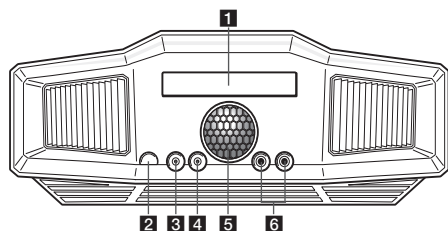


www.lg.com

Copyright © 2017 LG Electronics. All Rights Reserved

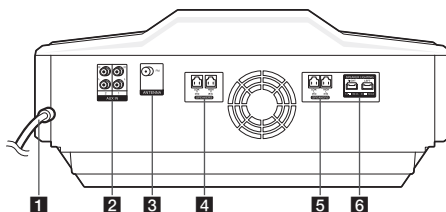


Front Panel



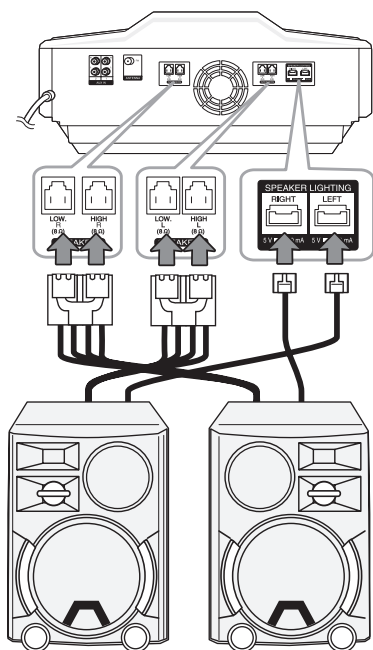
- 1** Disc tray
- 2** **R**
Remote Sensor
- 3** **HEADPHONE**
Connects a headphone.
- 4** **PORT.IN**
Connects a portable device.
- 5** **DANCE LIGHTING** (Lighting ball)
 - Shows the various lighting patterns and color.
 - You can control angle up and down with your finger.
- 6** **MIC 1/2**
Connects a microphone.

Rear Panel



- 1** Power cord
- 2** **AUX IN 1/2 (L/R)**
- 3** **ANTENNA (FM)**
- 4** **R SPEAKERS**
Connects the right speaker's cables.
- 5** **L SPEAKERS**
Connects the left speaker's cables.
- 6** **SPEAKER LIGHTING**
Connects the speaker lighting cables.

Speaker Connection



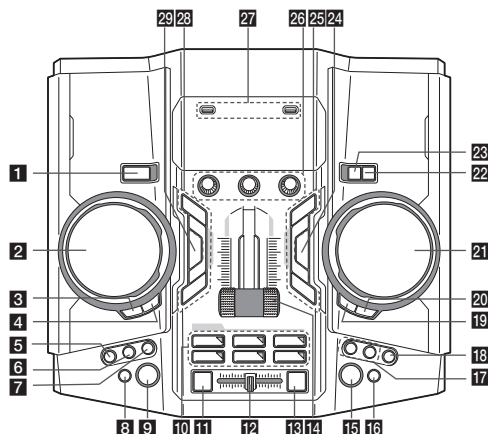
Additional Information

Specifications

Power Requirements	Refer to the main label on the unit.
Power Consumption	Refer to the main label on the unit.
Dimensions (W x H x D)	Approx. 470 mm x 240 mm x 420 mm
Net Weight	Approx. 7.7 kg
Bus Power Supply (USB)	5 V 500 mA
Amplifier (Total RMS output power)	4,800 W

Design and specifications are subject to change without notice.

Top Panel



1 (Power)

2 **SCRATCH / LEVEL CONTROL, SEARCH KNOB (A SIDE)**

- Turns clockwise or counterclockwise to make the scratch sound.
- Turns clockwise or counterclockwise to control the DJ EFFECT level.
- Turns clockwise or counterclockwise to search to the next/previous file or next/previous folder. (CD/USB 1 only)

3 **SEARCH (A SIDE)**

Searches to the next/previous file or next/previous folder by pressing SEARCH repeatedly. (CD/USB 1 only)

4 **OK (A SIDE)**

Selects the desired file or folder after searching a file or folder. (CD/USB 1 only)

5 **H/P MODE**

Presses to select a headphone monitor mode.

6 **H/P VOLUME**

Presses to select a headphone's volume control mode.

7 **MIC VOLUME**

Presses to select a microphone's volume control mode.

8 **BASS BLAST**

Selects BASS BLAST effect directly.

9 **LIGHTING**

Changes the lighting patterns and colors or turns off the lighting effects of DANCE LIGHTING and SPEAKER LIGHTING.

10 **DJ PRO PAD**

Presses a desired sound pad.

11 **AUTO SYNC**

When using MIX, you can synchronize the tempo of audio files being played in USB 1 and USB 2 by pressing **AUTO SYNC**.

12 **Cross fader**

Adjusts the sound volume of mixing files when using MIX ON by pressing **MIX**.

13 **MIX**

Mixes audio sound.

14 **PARTY THRUSTER**

Slide the lever to create a party atmosphere.

15 **REGION EQ**

Chooses region equalizer.

16 **EJECT**

Opens and closes the disc tray.

17 **KEY CHANGER (b/#)**

Changes the key to suit your vocal range.

18 **VOICE CANCELLER**

You can enjoy the function while playing the music, by reducing singer vocal of music in the various source.

19 **SEARCH (B SIDE)**

Searches to the next/previous file or next/previous folder by pressing SEARCH repeatedly. (USB 2 only)

20 **OK (B SIDE)**

Selects the desired file or folder after searching a file or folder. (USB 2 only)

21 **SCRATCH / LEVEL CONTROL, SEARCH KNOB (B SIDE)**

- Turns clockwise or counterclockwise to make the scratch sound.
- Turns clockwise or counterclockwise to control the USER EQ level.
- Turns clockwise or counterclockwise to search to the next/previous file or next/previous folder. (USB 2 only)

22 **F / WIRELESS LINK**

- Selects the function and input source.
- Press and hold for 3 seconds to select WIRELESS PARTY LINK mode.

23 **USB REC / DEMO**

- Records to USB 1.
- Copies USB 2 to USB 1.
- Shows DEMO mode.

24 **USER EQ**

Selects the sound effect created by your own.

25 **Basic controls (USB 2 only)**

Skips Fast backward or Forward. / Searches for a section within a track/file by pressing and holding.

Starts or pauses playback.

Stops playback or cancels DELETE function.

26 **A / B TEMPO**

Adjusts TEMPO in USB function.

VOLUME

Adjusts speaker, microphone or headphone volume.

27 **USB 1 / USB 2**

You can play or record sound files by connecting the USB device.

28 **Basic controls (CD / USB 1 / BLUETOOTH / RADIO only)**

- Skips Fast backward or Forward. / Searches for a section within a track/file by pressing and holding.
- Selects the radio stations.

- Starts or pauses playback.

- Selects STEREO/MONO.

Stops playback or cancels DELETE function.

29 **DJ EFFECT**

Selects a desired DJ EFFECT.

Additional Information

Caution

- When you use the multiple socket, it is advisable to use 15 A socket. 10 A socket may cause power off due to lack of power supply.
- Do not place objects on the speakers. It may cause the objects to fall and make property damage.
- Install the speakers on a firm surface not to slide. The vibration caused by the strong output can shake and move the speakers.
- Avoid turning up max volume in a small enclosed space. The powerful and intense output of the speakers can shake the ceiling and get the objects in the room falling.
- To protect from hearing damage, keep the sufficient distance from the speaker. The overwhelming sound from the speaker may cause a person's hearing damage.
- Allow more than 20 cm of free space between the main set and the speakers when you install the main set on the ground. High sound pressure from the speakers can make the set tremble to disturb the CD playback.
- Connect the power cord to wall outlet directly if possible. Or when you use an extension cable, it is highly recommended to use an extension cable of 110 V / 15 A or 230 V / 15 A, otherwise the unit may not operate properly because of the lack of power supply.
- Do not overload the extension cord with excessive electrical load.

Note

- Do not look directly at the light emitting part when the LIGHTING is turned on.
- If the illumination brightness is glaring, switch on the room lights or turn off the LIGHTING of the unit.

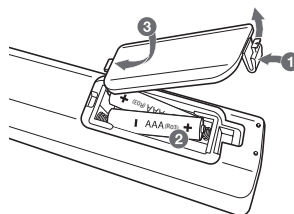
Grounding

(Except for devices which are not grounded.) Ensure that you connect the earth ground wire to prevent possible electric shock (i.e. a Audio with a three-prong grounded AC plug must be connected to a three-prong grounded AC outlet). If grounding methods are not possible, have a qualified electrician install a separate circuit breaker. Do not try to ground the unit by connecting it to telephone wires, lightning rods, or gas pipes.

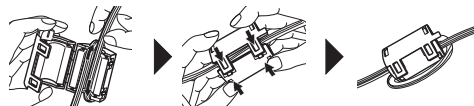
How to disconnect the wireless network connection or the wireless device

Turn off the unit by pressing the power button for more than 5 seconds.

Replacement of battery



About Ferrite Core (Optional)



Wind the L SPEAKERS cables around the ferrite core twice.
Wind the R SPEAKERS cables around the ferrite core twice.
Wind the LEFT and RIGHT SPEAKER LIGHTING cables all together around the ferrite core twice.

Declaration of Conformity



Hereby, LG Electronics declares that the radio equipment type MINI HI-FI SYSTEM is in compliance with Directive 2014/53/EU. The full text of the EU declaration of conformity is available at the following internet address:

<http://www.lg.com/global/support/cedoc/cedoc#>

For consideration of the user, this device should be installed and operated with a minimum distance of 20 cm between the device and the body.

Frequency range	Output power (Max.)
2402 to 2480 MHz	10 dBm

Controller App



Download the **Music Flow Bluetooth** App to your device.

LG Sound Sync (Wireless)



For more information, download the online owner's manual. <http://www.lg.com>

Российская Федерация

Импортер ООО "ЛГ Электроникс Рус"

Адрес импортера: 143160 Российская Федерация, Московская область, Рузский район, сельское поселение Дороховское, 86 км. Минского шоссе, д.9

Адрес производителя : ЛГ Электроникс (Хужоу) Инк., завод Хатаи
516006, Китай, пров. ГуанДонг, г. Хужоу, Промышленная зона
Жонгкай, Индустриальный парк Хутай, ХуФенг Донг Уи Роуд, 13.

Сделано в Китае

Қазақстан Республикасы

Импорттаушы АҚ "ЭЛ Джи Электроникс Алматы Қазақстан", 050061, Алматы қ., к. Көкорай, 2А

Өндірушінің мекенжайы: LG Electronics(Huizhou) Inc. Huitai Factory
516006, Қытай, ГуанДонг ауданы, Хужоу қаласы, Жонгкай өнеркәсіптік аймағы,
Хутай Индустриялық саябағы, ХуФенг Донг Уи Роуд, 13.

Қазақстан Республикасы территориясында тұтынушылардан келіп түскен талаптар мен ұсыныстарды қарайтын және тауарды жөндеу мен техникалық қызмет көрсететін ұжым:

АҚ «Эл Джи Электроникс Алматы Казахстан», 050061, Қазақстан Республикасы, Алматы қ., Көкорай, 2А. Басқа сервис орталықтары жайында мағлұматты "Тұтынушыға қызмет көрсету орталығына" телефон шалу арқылы білуге болады.

Қытайда жасалған

