

SIMPLE MANUAL

DVD Home Theater System

To view the instructions of advanced features,
visit <http://www.lg.com> and then download Owner's Manual.
Some of the content in this manual may differ from your unit.

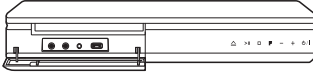
MODEL
LHD647



www.lg.com

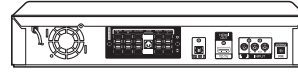


Front Panel



MIC 1/2 Connect a microphone.
PORT. IN Connect to a Portable device.
USB Port Connect a USB device.
△ Disc Tray Open / Close
>|| Starts / Pauses playback.
□ Stops playback.
F Changes the input source or function.
- / + Adjusts volume.
⏻ / | Power On / Off

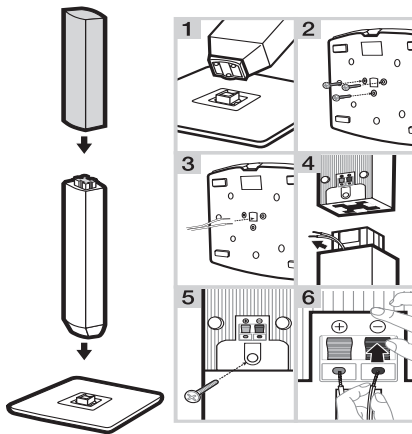
Rear Panel



SPEAKERS Connect to speakers.
OPTICAL IN Connect to digital device.
HDMI OUT TO TV Connect to TV.
VIDEO OUT Connect to TV.
AUX (L/R) INPUT Connect to analogue device.
ANTENNA FM Connect to radio antenna.

1

Speaker Assembling



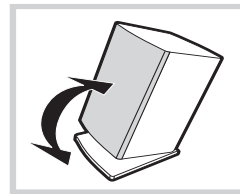
2

Speaker Installation

You can use the speaker in stand type (A) by adjusting the angle or wall type (B) by mounting the speaker to a wall.

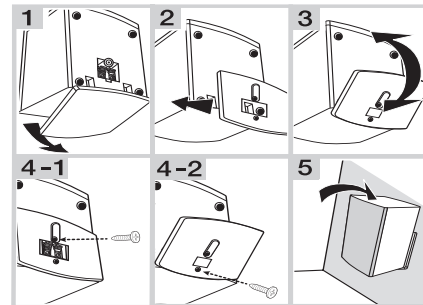
A Stand type

You can adjust angle of speaker.



B Wall type (Mounting the speakers to a wall)

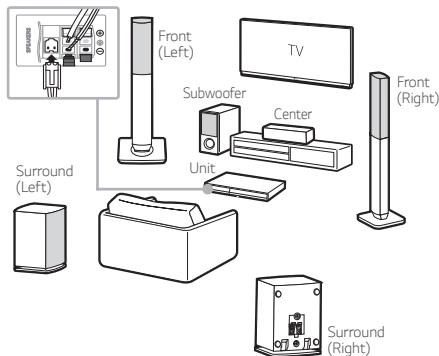
When you want to mount the speaker to a wall, please refer to below.



3

Speaker Connection

! Speaker design and connection method may be different according to models.



4

TV Connection

HDMI & Optical Connection

- 1 Connect the Unit to the TV using HDMI & Optical cable.
- 2 Set the input selector to HDMI on the TV.
- 3 Set up [External Speaker (Optical)] on your TV setting menu.
- 4 Follow the instructions on the TV screen using remote control.



5

Home Menu


Home menu appears on the TV screen. Enjoy various functions on the unit.



For more information, download the online owner's manual. <http://www.lg.com>

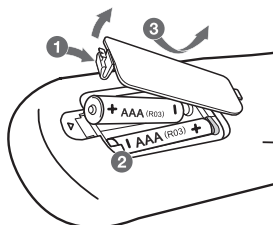
Additional Information

Specification

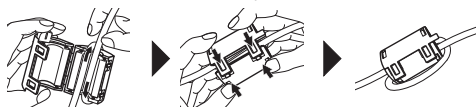
Power requirements	Refer to main label.
Power consumption	Refer to main label.
Dimensions (W x H x D)	Approx. 360 mm x 58 mm x 298.5 mm
Net Weight	Approx. 2.46 kg
Bus Power Supply (USB)	5 V  500 mA
Amplifier (Total RMS output power)	1,000 W

Design and specifications are subject to change without notice.

Replacement of battery



About Ferrite Core (Optional)



Wind HDMI cable around the ferrite core.

IMPORTANT SAFETY NOTICE

The cord grip for the plug fitted to this product is built into the existing power cord as supplied. If, for any reason you need to shorten the cord.

DO NOT RE-USE THE PLUG.

A new plug must be used to ensure your continued safety by securing the plug to the power cord in accordance with Plug & Socket Regulations 1994.



SAFETY PRECAUTION

THIS EQUIPMENT MUST BE DISCONNECTED FROM THE MAINS POWER SUPPLY WHEN IT IS NOT IN USE. DO NOT ALLOW THIS UNIT TO BE EXPOSED TO RAIN OR MOISTURE.

CAUTION

TO PREVENT ELECTRIC SHOCK, DO NOT REMOVE THE COVER. NO USER SERVICEABLE PARTS ARE INSIDE. REFER SERVICING TO QUALIFIED PERSONNEL.

The working life of this set is 7 years since the date of delivery to consumer. Upon the expiry of the said period, it might be unsuitable for the use according to their designation.

PRECAUTIONS

Please read these precautions before you operate this unit.

- Avoid extreme heat, cold, moisture and dust.
- Avoid using near a magnetic field. (This will adversely affect the units performance.)
- Be careful when the surface of the case is wiped with a volatile agent such as benzene, alcohol, thinner, etc. or a chemically processed cloth, the surface finish may deteriorate or its coating may peel.
- Use the unit only in a horizontal position, and do not place anything heavy on it.
- Keep the unit away from flower vases, tubs, sinks, etc. If any liquids should spill into unit, serious damage could occur. In that case, please consult qualified service personnel.
- Do not obstruct the ventilation holes: they prevent overheating. Even soft materials such as paper and cloth may prevent proper ventilation of the unit.
- **There are no serviceable parts inside. For service, please contact your service centre.**

JEDDAH MAIN SERVICE CENTER
P.O.BOX 704, JEDDAH 21421 KINGDOM OF SAUDI ARABIA
TEL) 02-629-2929

JEDDAH QUICK SERVICE CENTER
TEL) 02-663-3888 EXT. 340,343

RIYADH BRANCH SERVICE CENTER
TEL) 01-461-5559

AL KHOBAR BRANCH SERVICE CENTER
TEL) 03-857-2629/2637