

SIMPLE MANUAL

HIGH POWER SPEAKER SYSTEM

To view the instructions of advanced features,
visit <http://www.lg.com> and then download Owner's Manual.
Some of the content in this manual may differ from your unit.

MODEL
FH2



www.lg.com

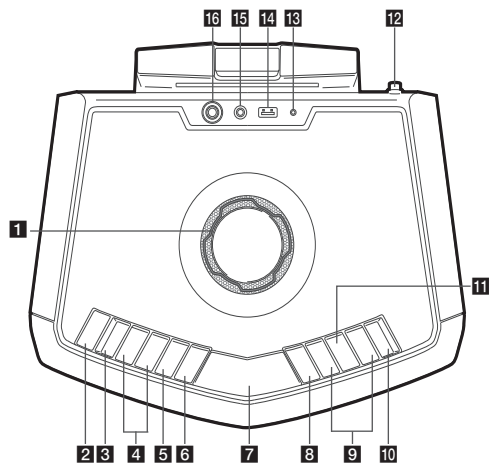
Copyright © 2016-2017 LG Electronics. All Rights Reserved

Precautions on handling a battery

- This unit has a built-in valve regulated lead-acid rechargeable battery. (12 V/7.0 Ah)
- Do not use the battery in a closed room or near fire.
- Charge the battery under the charging condition specified.
- If any corrosion of the terminals, leakage or deformation of the case of the battery is found, do not use the battery.
- If the battery leaks, while protecting your hands or clothing, remove the battery from the device and should be extremely careful not to infect the skin or eyes.
- If the battery leaks and the liquid inside spills on the skin or clothing, immediately wash it off with plenty of clean water. If the liquid splashes into eyes, immediately flush the eyes with plenty of clean water and consult a doctor.
- Avoid mixed usage of batteries differing in type, manufacturer or history of use.
- Do not throw the battery in fire nor heat the battery.
- Do not short of battery terminals.
- Do not attempt to disassemble, remodel or destroy the battery.
- Do not place the battery near a child.
- The battery can be replaced. If you need to charge your battery more and more frequently, it might be time to replace it. The battery should be serviced by LG Electronics customer care center.
- Charge fully before storing a battery which has not been in use for a long period and turn ON/OFF switch off (OFF). Store the battery in a cool, dry place.
- During storage of the battery, charge it at least once every three months. If the battery is stored for a long period without being charged, its battery life may be shortened.
- The used battery must be recycled or disposed of separately from household waste.



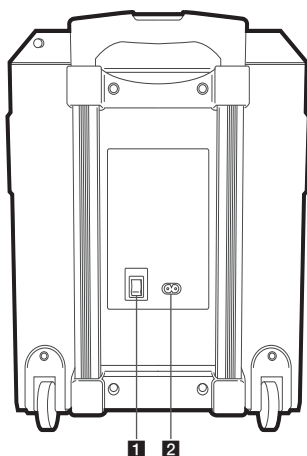
Top Panel



- 1 MASTER VOLUME**
Adjusts speaker or microphone volume.
- 2 O/I (Standby/On)**
Switches the unit ON or OFF.
- 3 MIC (Microphone)**
Press to select a microphone's volume control mode.
- 4 b/\# (KEY CHANGER)**
Changes the key to suit your vocal range.

- 5 VOICE CANCELLER**
You can enjoy the function while playing the music, by reducing singer vocal of music in the various source.
- 6 SOUND EFFECT/BASS BLAST**
- Changes the sound effect.
- Press and hold to select BASS effect directly.
- 7 Display window**
- 8 F (Function)**
Selects the function and input source.
- 9 I<</>>I**
- Skips Fast backward or Forward. /
- Searches for a section within a file by pressing and holding.
- Selects the radio stations.
- 10 PRESET/REPEAT**
- Chooses a preset number for a radio station. /
- Stores radio stations by pressing and holding.
- Listens to your files repeatedly or randomly.
- Sees the name of connected all Bluetooth device in Bluetooth mode.
- 11 >II**
Starts or pauses playback.
- 12 FM antenna**
- 13 CHARGING**
Battery charging indicator
- 14 USB port**
You can play sound files by connecting the USB device.
- 15 PORT.IN**
Connects a portable device.
- 16 MIC (Microphone)**
Connects a microphone.

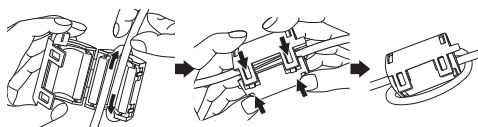
Rear Panel



- 1 Power ON/OFF switch**
Switches the unit ON or OFF.
(Battery can be charged even when this unit is in off (OFF) status.)
- 2 AC in socket**

About Ferrite Core (Optional)

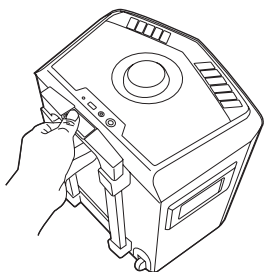
Wind the power cord around the ferrite core once.



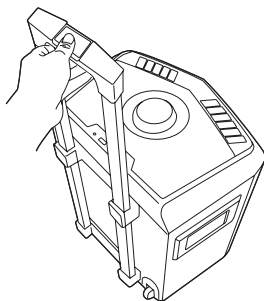
Carrying the unit

The unit has wheels and a handle so you can easily move the unit.

1. Press the lock button on the handle.



2. Pull the handle up.



3. Release the lock button to lock the handle in place.




Note

To retract the handle, press the button and push down.

Additional Information

Specifications

General

Power Requirements	Refer to the main label on the unit.
Power Consumption	Refer to the main label on the unit.
Dimensions (W x H x D)	Approx. 352.5 mm x 419.6 mm x 269.2 mm
Net Weight	Approx. 9.71 kg
Operating temperature	5 °C to 45 °C
Operating humidity	5 % to 60 %
Maximum operating altitude	2000 m
Bus Power Supply (USB)	5 V  500 mA
Amplifier (Total RMS output power)	50 W

Battery

Battery type	12 V/7.0 Ah (Valve Regulated Lead-Acid rechargeable battery)
Operating time	Approx. 15 hours (Based on fully charging the battery and continuous playback using 50 % volume level.) It may vary depending on the battery status and operational conditions.
Charging time	Approx. 9 hours It may vary depending on the battery status and operational conditions.

Design and specifications are subject to change without notice.