



ENGLISH

SIMPLE MANUAL

# Wireless Sound Bar

To view the instructions of advanced features,  
visit <http://www.lg.com> and then download Owner's Manual.  
Some of the content in this manual may differ from your unit.

MODEL  
SH4

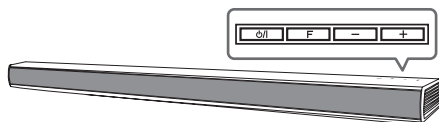


\* M F L 6 9 3 9 2 8 1 4 \*

[www.lg.com](http://www.lg.com)



## Front Panel



The buttons are located on the rear.

<b>P/I</b>	Standby / On
<b>F</b>	Selects Function
<b>- +</b>	Adjusts Volume

## 1 Subwoofer Connection

Place the wireless subwoofer near the sound bar and follow steps below.

- 1 Connect the power cord of wireless subwoofer to the outlet.
- 2 Turn on the main unit :  
The sound bar and wireless subwoofer will be **automatically** connected. Green LED on the rear of wireless subwoofer turns on.



**If LED on the rear of wireless subwoofer doesn't turn on green, please follow as below.**

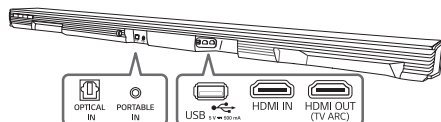
- i. Adjust volume level of the main unit to minimum by pressing **VOL -** button repeatedly until standby LED (Red) turns on for 2 seconds and blinks slowly.
- ii. Press and hold **Mute** button on the remote control about 3 seconds. The standby LED (Red) on the main unit blinks quickly.
- iii. Press and hold **Pairing** on the back of wireless subwoofer for more than 5 seconds using point of a pen.
- iv. Disconnect the power cord of the sound bar and the wireless subwoofer. Connect them again.

## Controller App



Download the **Music Flow Bluetooth** App to your device.

## Rear Panel



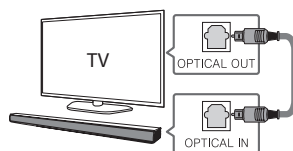
<b>OPTICAL IN</b>	Connect to an Optical device
<b>PORTABLE IN</b>	Connect to a Portable device
<b>USB port</b>	Connect to a USB device
<b>HDMI IN</b>	Connect to HDMI out on a device
<b>HDMI OUT (TV ARC)</b>	Connect to a TV

## 2 TV Connection

Connect with the Sound Bar and TV using Optical (A) or HDMI ARC (B).

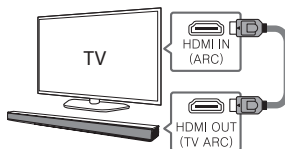
### A Optical Connection

- 1 Connect the sound bar to the TV using Optical cable.
- 2 Set up [External Speaker (Optical)] on your TV setting menu.



### B HDMI(ARC) Connection

- 1 Connect the sound bar to the TV using HDMI cable.
- 2 Set up [External Speaker (HDMI ARC)] on your TV setting menu.



## LG Sound Sync (Wireless)



For more information, download the online owner's manual. <http://www.lg.com>

## Additional Information

### Specification

Power consumption	Refer to the main label.
	Networked standby : 0.5 W (If all network ports are activated.)
AC adapter	<ul style="list-style-type: none"> <li>Model : DA-38A25</li> <li>Manufacturer : Asian Power Devices Inc.</li> <li>Input : 100 - 240 V ~ 50 - 60 HZ 1.2 A</li> <li>Output : 25 V <math>\overline{\text{---}}</math> 1.52 A</li> </ul>
Dimensions (W x H x D)	Approx. 890 mm x 53 mm x 85 mm (35.0 inch x 2.1 inch x 3.3 inch) Without foot
Net Weight	Approx. 2.34 kg (5.2 lb)
Bus Power Supply (USB)	5 V $\overline{\text{---}}$ 500 mA
Amplifier (Total RMS Output power)	300 W

Design and specifications are subject to change without notice.

### Remote control

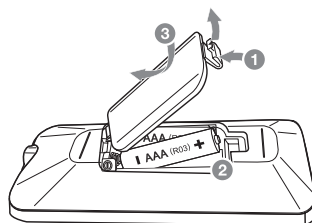


- : Selects the sound effect.
- : Turns down the volume at night.
- : Adjusts the volume level of subwoofer.
- : Automatically turns on by an input source.

### How to disconnect the wireless network connection or the wireless device

Set up the AUTO POWER ON/OFF function to off and turn off the unit.

### Replacement of battery



## Industry Canada Statement

This device complies with Industry Canada's licence-exempt RSSs. Operation is subject to the following two conditions:

- (1) This device may not cause interference; and
- (2) This device must accept any interference, including interference that may cause undesired operation of the device.

## CAN ICES-3 (B)/NMB-3 (B)

### IC Radiation Exposure Statement

This equipment complies with IC radiation exposure limits set forth for an uncontrolled environment.

This equipment should be installed and operated with minimum distance 20 cm (7.8 inches) between the antenna & your body.

NOTE: THE MANUFACTURER IS NOT RESPONSIBLE FOR ANY RADIO OR TV INTERFERENCE CAUSED BY UNAUTHORIZED MODIFICATIONS TO THIS EQUIPMENT. SUCH MODIFICATIONS COULD VOID THE USER'S AUTHORITY TO OPERATE THE EQUIPMENT.

## WARNING

[For product having the wireless function using 5 GHz frequency bands]

- (i) the device for operation in the band 5150–5250 MHz is only for indoor use to reduce the potential for harmful interference to co-channel mobile satellite systems;
- (ii) for devices with detachable antenna(s), the maximum antenna gain permitted for devices in the bands 5250–5350 MHz and 5470–5725 MHz shall be such that the equipment still complies with the e.i.r.p. limit;
- (iii) for devices with detachable antenna(s), the maximum antenna gain permitted for devices in the band 5725–5850 MHz shall be such that the equipment still complies with the e.i.r.p. limits specified for point-to-point and non-point-to-point operation as appropriate; and
- (iv) the worst-case tilt angle(s) necessary to remain compliant with the e.i.r.p. elevation mask requirement set forth in Section 6.2.2(3) shall be clearly indicated. (devices operating in the band 5250–5350 MHz with a maximum e.i.r.p. greater than 200 mW)
- (v) High-power radars are allocated as primary users (i.e. priority users) of the bands 5250–5350 MHz and 5650–5850 MHz and that these radars could cause interference and/or damage to LE-LAN devices.

LG Customer Information Center  
Centre d'information à la clientèle de LG

1-888-542-2623

CANADA

Register your product Online!  
Enregistrez votre produit en ligne!

[www.lg.com](http://www.lg.com)