



LG

Life's Good

用户手册

LG CAM Plus

LG拍照精灵

与所有国家/地区的 G5 兼容
(韩国、加拿大和 AT&T 除外)

REV 3.0 CN



用户手册

LG CAM Plus

LG拍照精灵

与所有国家/地区的 G5 兼容
(韩国、加拿大和 AT&T 除外)

保留所有权利。

LG Electronics Inc., 2016

注意：使用 LG CAM Plus 之前，请先仔细阅读所有信息，以获得最佳性能并防止损坏产品。

产品概述

CAM Plus可作为相机手柄和备用电池连接到您的G5底部。

- 有了 CAM Plus，您可以像使用数码相机一样使用您的G5。按下快门按钮，您可以像使用相机一样拍照，并可对图片进行放大和缩小。半按快门按钮，可以使用半快门功能。
- CAM Plus 配备了一块 1,140 mAh 电池，可以作为使用相机时的备用电池。

重要安全信息

- 使用产品前请先阅读使用说明，使用说明阅读后请保留备用。
- 务必使用正版产品。请勿将本产品用于任何非预期目的。
- 使用或连接非正版产品可能缩短产品寿命或引起爆炸。这样做还可能损坏产品并导致保修失效。
- 如果插入不符合服务提供商要求的模块，例如从其他服务提供商处或服务提供商未覆盖的区域购买的模块，您的设备可能无法正常工作。
- 请勿拆解产品或使其受到撞击。这样做可能会导致电击、短路或火灾。
- 对产品施加重压可能会使其受损。
- 如果弯折或挤压本产品且未及时维修，可能会导致部分功能受损，或者外观变形或损坏。
- 为防止损坏，请注意勿使产品跌落到坚硬表面或受到强烈撞击。

- 使产品远离水、酒精、苯等。
- 请勿在极限温度中使用或存放产品。请勿将产品长时间曝露在阳光直射下。这样做可能导致损坏或引起爆炸。
- 请勿使用酒精、苯、稀释剂或清洁剂清洁本产品。这样做可能引发火灾。
- 请使用软布擦拭本产品。
- 请勿使本产品靠近金属物体，如项链、钥匙、硬币、钉子或钟表。如发生短路，也会有爆炸危险。
- 请将产品置于儿童和宠物接触不到的地方。请勿将产品放入口中或使其受到强烈撞击。这可能导致电击、爆炸或窒息等危险。
- 请勿将导电材料（金属件、铅笔芯等）接入或插入连接器。
- 请勿在使用过程中用毛毯覆盖或包裹本产品。

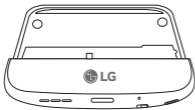
- 长时间使用后，本产品会发热。在本产品发热后，请勿触摸，以免造成低温灼伤。
- 请勿将本产品当作生活垃圾处理。这样做可能引发火灾或破坏环境。
- 为了安全起见，请勿取出装入产品中的电池。
- 如果要更换电池，请将其携带至 LG Electronics 授权服务点或经销商处以寻求帮助。
- 锂离子电池属于危险组件，可能会导致人身伤害。
- 由非合格专业人员更换电池可能会损坏设备。
- 请勿自行更换电池，否则可能会损坏电池，导致过热和伤害。电池必须由授权的服务提供商进行更换。电池应回收利用或与生活垃圾分开处理。

- 如果此产品包含不易被最终用户拆卸的电池，LG 建议在产品使用寿命结束时，仅由合格专业人员拆卸电池，然后再进行更换或回收利用。为防止产品受损，保证自身安全，请勿自行拆卸电池，而是应联系 LG 服务帮助热线或其他独立服务提供商进行咨询。
- 拆卸电池将涉及产品外壳的拆卸、电缆/触点的断开，还需使用专门工具小心地取出电池。如果您需要合格专业人员如何安全拆卸电池的指导，请访问 <http://www.lge.com/global/sustainability/environment/take-back-recycling>。

警告

本电池如果更换不正确会有爆炸的危险，请按照制造商提供的说明书处理废旧电池。

产品组件



LG CAM Plus

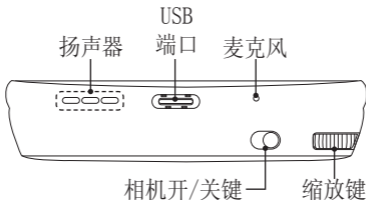


用户手册

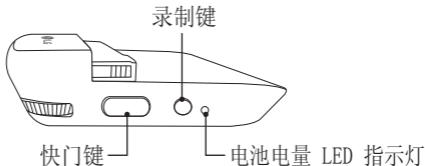
- 如果缺少任何组件，请与您购买本产品的零售商联系。
- 某些部件可能因具体环境而更改，恕不提前通知。
- 为提高性能，本产品的外观和规格可能会有更改，恕不提前通知。

产品说明

正面



侧面



视产品规格而定，某些功能可能无法使用。

连接

插入电池

1 对齐电池和模块上的箭头，将电池端子牢固连接到模块。



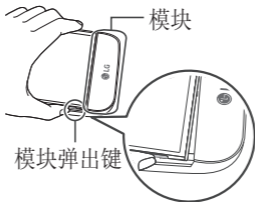
2 将电池与下边缘对齐，小心地将模块滑回设备内。



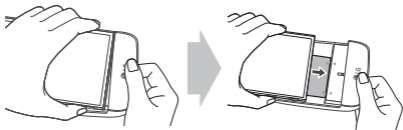
- 将模块插入设备中时，切勿按模块弹出键。
- 将电池插入设备中时，确保电池已连接到模块。

取出电池

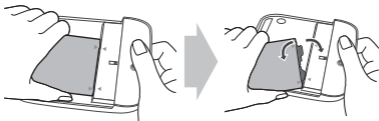
1 按模块弹出键以将模块从设备中弹出一部分。



2 握住已弹出模块的中部，并将它拉出。



- 3 用双手握住电池和模块，并沿外弧方向（如下图所示）使两者分离以断开电池端子。



- 在使用过程中，请勿断开模块。
- 在使用过程中，如果模块变松或已断开，请立即将其连接到主机。
- 在连接或取出模块时，请注意不要伤到双手或手指。
- 请注意不要让产品或模块的边缘伤到您。
- 请确保正确插入电池和模块，以免造成产品损坏或无法打开。
- 请依据本用户手册的说明进行操作，以免造成产品损坏。
- 此产品具备同时充放电功能。

说明

- 如果您的G5和LG CAM Plus归属于其他国家/地区或运营商，此产品也可能无法正常使用。
- 连接 USB 时，无法操作 LG CAM Plus（数据通信和充电仍有效）。
- 如果按“相机开/关”、“快门”或“录制”按钮，CAM Plus 中的低容量电池将为您的 G5 短时充电。当 G5 的电池电量耗尽时，充电功能将不可用。
- 连接到 LG CAM Plus 的 OTG 设备将无法识别（不支持 OTG）。
- 该产品可能与在线商场中的照相机应用程序不兼容。

LED 通知

- 充电时，LED 指示灯将变为红色。充满电后，LED 指示灯将变为绿色。
- 将 CAM Plus 连接到手机后，如果电池电量为 10% 或更低，电池电量 LED 指示灯将变为红色；如果电池电量为 5% 或更低，则 LED 指示灯将闪烁。（如果电池电量为 11% 或更高，则 LED 指示灯将会关闭。）


关于固件升级


- 通过 LG CAM Plus Manager（可以从安智市场下载和安装），可以执行固件升级（支持的操作系统：Android 6.0（M 操作系统）或以上版本）。
- 也可以通过使用 LG Friends Manager 应用程序来进行固件升级。

连拍功能相关信息

连拍功能需要使用LG CAM Plus模块，将在后续的G5升级软件上推出。

- **连拍**

您可通过拍摄连续照片来创建移动照片。在自动模式屏幕上点击并按住 ，或者在LG CAM Plus 上点击并按住快门键即可实现此功能。

按住  或快门键时将进行快速连续拍摄。

规格和功能

USB 类型	USB 2.0 (Type-C)
电池	锂离子电池 1140 mAh
充电时间	200分钟以下
电压	5 V \pm 10%、9 V \pm 10%
电流消耗	25 mA (未充电), 1 mA (关机)
充电消耗	500 mA
输出消耗	500 mA
音频	扬声器和数字麦克风
声压	1 m 声压大于 60 dB (100%) *基于满电
天线	GSM/CDMA、WCDMA、LTE
LED	电池指示灯
工作温度	-20 °C ~ 40 °C
尺寸/重量	73.9 mm X 61.4 mm X 15.9 mm / 55.4g

产品中有害物质的名称及含量

部件名称	有害物质					
	铅 (Pb)	汞 (Hg)	镉 (Cd)	六价铬 (Cr(VI))	多溴联苯 (PBB)	多溴二苯醚 (PBDE)
印刷电路板组件	×	○	○	○	○	○
塑料	○	○	○	○	○	○
金属	×	○	○	○	○	○
电池	×	○	○	○	○	○
附件	○	○	○	○	○	○

本表格依据SJ/T 11364 的规定编制。

○:

表示该有害物质在该部件所有均质材料中的含量均在GB/T 26572 规定的限量要求以下。

×:

表示该有害物质至少在该部件的某一均质材料中的含量超出GB/T 26572 规定的限量要求。

标记为X的部品以现在的技术尚不能减少有害物质。

LG电子正在尽最大的努力开发有害物质减少技术。



本产品的环保使用期限标识如图所示。

该标识的环保使用期限以本说明书中所述的正常使用条件为基准。

有限保修

根据此有限保修的条件，LG Electronics 保证本产品自消费者最初购买产品的时间起并在随后的一（1）年时期内在设计、材料和制造工艺上无缺陷。如果您的产品需要保修服务，请将它退回到原来购买它时的经销商，或者联系您本地的 LG Electronics 联系中心以获得其它信息。



LG

Life's Good

User Guide

LG CAM Plus

CBG-700

ENGLISH

All rights reserved. LG Electronics Inc., 2016

Note: Please read all information carefully prior to using the LG CAM Plus in order to enjoy the best performance and prevent damage to the product.

Product Overview

The LG CAM Plus is a camera grip and extra battery that can be attached to the bottom of your LG G5.

- With the LG CAM Plus, you can use your LG G5 like a digital camera. Use it to take pictures by pressing the shutter button and zooming in and out. Half-press the shutter button to use the half-shutter function.
- The LG CAM Plus is equipped with a 1,140 mAh battery that can be used as extra battery when using the camera.

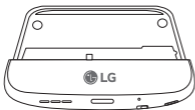
Important Safety Information

- Always use genuine products. Do not use this product for any unintended purpose.
- Using or connecting products that are not genuine may shorten the product's longevity or cause an explosion. Doing so may also damage the product and thereby voids the service warranty.
- If you insert a module that is not compatible with your service provider, for example, a module bought from another service provider or in an area that is not covered by your service provider, your device does not operate normally.
- Do not disassemble the product or allow anything to impact it. Doing so may cause an electrical shock, short circuit or fire.
- Applying heavy pressure to the product may damage it.
- Some functions of this product may be damaged, or its appearance may be altered or impaired, if it is bent or crushed and not repaired right away.
- In order to prevent damage, be careful not to drop the product on a hard surface or subject it to severe shock.
- Keep the product away from water, alcohol, benzene, etc.
- Do not use, or store the product, in extreme temperatures. Do not leave the product in direct sunlight for long periods of time. Doing so may cause damage or an explosion.
- Do not use alcohol, benzene, thinners or detergents to clean the product. Doing so may cause a fire.
- Use a soft cloth to wipe the product.
- Do not place the product near metal objects, such as necklaces, keys, coins, nails, or clocks. In the case of a short-circuit, there is also the risk of an explosion.
- Keep the product out of the reach of small children and pets. Do not put the product in your mouth or subject it to severe shock. There is a risk of electric shock, an explosion, or suffocation.

- Do not connect or insert conductive materials (metal pieces, pencil leads, etc.) into the connectors.
- Do not cover or wrap the product with a blanket while using the product.
- The product may become hot after long periods of use. Avoid touching the product when it becomes hot as it may cause a low-temperature burn.
- Do not dispose of the product as household waste. Doing so may cause a fire or damage the environment.
- For your safety, do not remove the battery incorporated in the product
- If you need to replace the battery, take it to the nearest authorized LG Electronics service point or dealer for assistance.
- Li-ion Battery is hazardous component which can cause injury.
- Battery replacement by non-qualified professional can cause damage to your device.
- Do not replace the battery by yourself. The battery can be damaged, which can cause overheat and injury. The battery must be replaced by the authorized service provider. The battery should be recycled or disposed separately from household waste.
- In case this product contains a battery incorporated within the product which cannot be readily removed by end-users, LG recommends that only qualified professionals remove the battery, either for replacement or for recycling at the end of this product's working life. To prevent damage to the product, and for their own safety, users should not attempt to remove the battery and should contact LG Service Helpline, or other independent service providers for advice.

- Removal of the battery will involve dismantling of the product case, disconnection of the electrical cables/contacts, and careful extraction of the battery cell using specialized tools. If you need the instructions for qualified professionals on how to remove the battery safely, please visit <http://www.lge.com/global/sustainability/environment/take-back-recycling>.

Product Components



LG CAM Plus

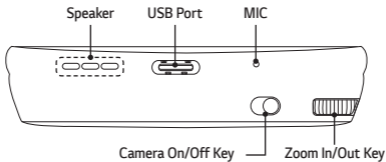


User Guide

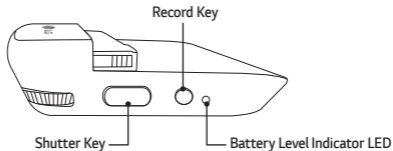
- If there are any missing components, contact the retailer where you purchased the product.
- Some items are subject to change without prior notice depending on the circumstances.
- The appearance and specifications of the product are subject to change without prior notice to improve performance.

Product Description

Front



Side



Some functions may not be available depending on the product specifications.

Connections

Inserting the Battery

1 Align the arrows on both the battery and the module and firmly connect the battery terminals to the module.



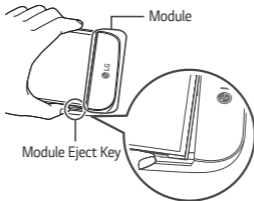
2 Align the battery with the lower edge and carefully slide the module back into the device.



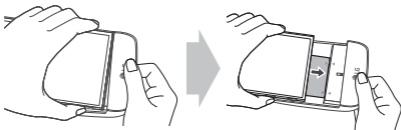
- Never press the Module Eject Key when inserting the module into the device.
- When inserting the battery into the device, make sure the battery is attached to the module.

Removing the Battery

1 Press the Module Eject Key to partly eject the module from the device.



2 Grab the middle of the ejected module and pull it out.



3 Hold the battery and module with both hands and separate them from one another in an outward arc (as indicated below) to disconnect the battery terminals.



- Do not detach the module while it is in use.
- Immediately attach the module to the main unit if it becomes loose or is detached during use.
- Be careful to not hurt your hands or fingers when attaching or detaching the module.
- Be careful to not be injured by the edges of the product or the module.
- Make sure the battery and the module are properly inserted. Otherwise, the product may be damaged or fail to turn on.
- Failing to follow the instructions in this user guide may damage the product.

Instructions

- This product will not operate normally if your G5 and LG CAM Plus are supported by different countries or operators.
- The LG CAM Plus cannot be operated while the USB is connected (data communication and charging are still available).
- If you press the Camera On/Off, Shutter, or Recording buttons, the low-capacity battery in the LG CAM Plus will charge your LG G5 for some time. The charging feature is not available when the LG G5's battery is completely empty (power off).
- OTG devices that are connected to the LG CAM Plus will not be recognized (OTG is not supported).
- The product may be not compatible with camera apps available on online marketplaces.

LED Notifications

- The LED light will turn red while charging, and it will turn green when fully charged.
- After the LG CAM Plus is connected to the phone, the Battery Level Indicator LED will turn red if the battery level is at 10% or less, and the LED will blink if the battery level is at 5% or less. (The LED will be off if it is at 11% or more.)

About Firmware Upgrades


- Firmware upgrades are available through CAM Plus Manager, which can be downloaded and installed from Anzhi Play™ Store (Supported OS: Android™ 6.0 [Marshmallow OS] or above).
- Firmware upgrade is also available using the LG Friends Manager app.

Information about Burst Shot feature support

The following Burst Shot feature using the LG CAM Plus will be made available through a future G5 software upgrade.

- **Burst Shot**

You can take continuous shots to create moving photos.

Tap and hold  on the auto mode screen, or tap and hold the Shutter key on the LG CAM Plus.

Continuous shots are taken at a fast speed while  or the Shutter key is held down.

Specifications and Features

USB Type	USB 2.0 (Type-C)
Battery	Li-ion 1140 mAh
Charging Time	Less than 200 minutes
Voltage	5 V \pm 10%, 9 V \pm 10%
Current Consumption	25 mA (no Charging), 1 mA (Power Off)
Charging Consumption	500 mA
Output Consumption	500 mA
Audio	Speaker and Digital MIC
Sound Pressure	1 m Sound Pressure 60 dB \uparrow (100%) *Based on full charge
Antenna	GSM/CDMA, WCDMA, LTE™
LED	Battery Indicator
Operating Temperature	-20 °C ~ 40 °C
Dimensions/Weight	73.9 mm X 61.4 mm X 15.9 mm / 55.4 g

Limited Warranty

SUBJECT TO THE CONDITIONS OF THIS LIMITED WARRANTY, LG ELECTRONICS WARRANTS THIS PRODUCT TO BE FREE FROM DEFECTS IN DESIGN, MATERIAL AND WORKMANSHIP AT THE TIME OF ITS ORIGINAL PURCHASE BY A CONSUMER, AND FOR A SUBSEQUENT PERIOD OF ONE (1) YEAR. SHOULD YOUR PRODUCT NEED WARRANTY SERVICE, PLEASE RETURN IT TO THE DEALER FROM WHOM IT WAS PURCHASED OR CONTACT YOUR LOCAL LG ELECTRONICS CONTACT CENTER TO GET FURTHER INFORMATION.



www.lg.com

Any modifications or changes to this manual due to typographical errors or inaccuracies of stated information shall only be made by LG Electronics Inc.