



LG Pocket Photo

Owner's manual

Please read this manual carefully before operating your device.

MODEL : PD251W/ PD251P/ PD251Y/ PD251TW



Android™



Windows Phone Store



Fun Application



Inkless Paper



Bluetooth®



The actual device may differ from the image.

ENGLISH

Safety information



CAUTION: TO REDUCE THE RISK OF ELECTRIC SHOCK DO NOT REMOVE COVER (OR BACK) NO USER-SERVICEABLE PARTS INSIDE REFER SERVICING TO QUALIFIED SERVICE PERSONNEL.



This lightning flash with arrowhead symbol within an equilateral triangle is intended to alert the user to the presence of uninsulated dangerous voltage within the product's enclosure that may be of sufficient magnitude to constitute a risk of electric shock to persons.



The exclamation point within an equilateral triangle is intended to alert the user to the presence of important operating and maintenance (servicing) instructions in the literature accompanying the product.

WARNING: TO PREVENT FIRE OR ELECTRIC SHOCK HAZARD, DO NOT EXPOSE THIS PRODUCT TO RAIN OR MOISTURE.

WARNING: Do not install this equipment in a confined space such as a book case or similar unit.

CAUTION: Do not use high voltage products around this product (ex. Electrical swatter). This product may malfunction due to electrical shock.

This product contains chemicals known to the State of California to cause cancer and birth defects or other reproductive harm. ***Wash hands after handling.***

CAUTION: Do not block any ventilation openings. Install in accordance with the manufacturer's instructions.

Slots and openings in the cabinet are provided for ventilation and to ensure reliable operation of the product and to protect it from over heating. The openings shall never be blocked by placing the product on a bed, sofa, rug or other similar surface. This product shall not be placed in a built-in installation such as a bookcase or rack unless

proper ventilation is provided or the manufacturer's instruction has been adhered to.

CAUTION concerning the Power Cord

Most appliances recommend they be placed upon a dedicated circuit;

That is, a single outlet circuit which powers only that appliance and has no additional outlets or branch circuits. Check the specification page of this owner's manual to be certain. Do not overload wall outlets. Overloaded wall outlets, loose or damaged wall outlets, extension cords, frayed power cords, or damaged or cracked wire insulation are dangerous. Any of these conditions could result in electric shock or fire. Periodically examine the cord of your appliance, and if its appearance indicates damage or deterioration, unplug it, discontinue use of the appliance, and have the cord replaced with an exact replacement part by an authorized service center. Protect the power cord from physical or mechanical abuse, such as being twisted, kinked, pinched, closed in a door, or walked upon. Pay particular attention to plugs, wall outlets, and the point where the cord exits the appliance.

The Power Plug is the disconnecting device. In case of an emergency, the Power Plug must remain readily accessible.

This device is equipped with a portable battery or accumulator.

Safety way to remove the battery or the battery from the equipment: Remove the old battery or battery pack, follow the steps in reverse order than the assembly. To prevent contamination of the environment and bring on possible threat to human and animal health, the old battery or the battery put it in the appropriate container at designated collection points. Do not dispose of batteries or battery together with other waste. It is recommended that you use local, free reimbursement systems for batteries and accumulators. The battery shall not be exposed to excessive heat such as sunshine, fire or the like.

NOTICE: For safety marking information including product identification and supply ratings, please refer to the main label inside the apparatus.

CAUTION:

- The apparatus should not be exposed to water (dripping or splashing) and objects filled with liquids, such as vases, shouldn't be placed on the apparatus.
- Minimum distance around the apparatus for sufficient ventilation, no less than 5 cm.
- The ventilation should not be impeded by covering the ventilation openings with items, such as newspapers, table-cloth, curtains etc.
- No naked flame sources, such as lighted candles, should be placed on the apparatus.
- The unit's internal lithium battery should only be serviced by an authorised service centre.

**Note****Device operating temperature**

When operating in cold weather, the device shall not print. Bring it inside from the cold and give about 10 min to adjust to the specified operating temperature (5 °C - 40 °C). Then try printing again. (For the appropriate use, it is recommended not to operate it outdoors in winter.)

**Caution****CAUTION when using this product in environments of low humidity**

- It may cause static electricity in environments of low humidity.
- It is recommended to use this product after touching any metal object which conducts electricity.

IMPORTANT SAFETY INSTRUCTIONS

1. Read these instructions.
2. Keep these instructions.
3. Heed all warnings.
4. Follow all instructions.
5. Do not use this apparatus near water.
6. Clean only with dry cloth.
7. Do not block any ventilation openings. Install in accordance with the manufacturer's instructions.
8. Do not install near any heat sources such as radiators, heat registers, stoves, or other apparatus (including amplifiers) that produce heat.
9. Do not defeat the safety purpose of the polarized or grounding-type plug. A polarized plug has two blades with one wider than the other. A grounding type plug has two blades and a third grounding prong. The wide blade or the third prong are provided for your safety. If the provided plug does not fit into your outlet, consult an electrician for replacement of the obsolete outlet.
10. Protect the power cord from being walked on or pinched particularly at plugs, convenience receptacles, and the point where they exit from the apparatus.
11. Only use attachments/accessories specified by the manufacturer.
12. Use only with the cart, stand, tripod, bracket, or table specified by the manufacturer, or sold with the apparatus. When a cart is used, use caution when moving the cart/apparatus combination to avoid injury from tip-over.
13. Unplug this apparatus during lightning storms or when unused for long periods of time.
14. Refer all servicing to qualified service personnel. Servicing is required when the apparatus has been damaged in any way, such as power-supply cord or plug is damaged, liquid has been spilled or objects have fallen into the apparatus, the apparatus has been exposed to rain or moisture, does not operate normally, or has been dropped.

FCC Compliance Statement

This device complies with part 15 of the FCC rules. Operation is subject to the following two conditions:

- (1) This device may not cause harmful interference, and
- (2) This device must accept any interference received, including interference that may cause undesired operation.

NOTE: This equipment has been tested and found to comply with the limits for a Class B digital device, pursuant to Part 15 of the FCC Rules. These limits are designed to provide reasonable protection against harmful interference in a residential installation. This equipment generates, uses, and can radiate radio frequency energy and, if not installed and used in accordance with the instructions, may cause harmful interference to radio communications. However, there is no guarantee that interference will not occur in a particular installation.

If this equipment does cause harmful interference to radio or television reception, which can be determined by turning the equipment off and on, the user is encouraged to try to correct the interference by one or more of the following measures:

- Reorient or relocate the receiving antenna.
- Increase the separation between the equipment and receiver.
- Connect the equipment into an outlet on a circuit different from that to which the receiver is connected.
- Consult the dealer or an experienced radio/TV technician for help.

CAUTION: Any changes or modifications not expressly approved by the party responsible for compliance could void the user's authority to operate this equipment.

FCC WARNING: This equipment may generate or use radio frequency energy. Changes or modifications to this equipment may cause harmful interference unless the modifications are expressly approved in the instruction manual. The user could lose the authority to operate this equipment if an unauthorized change or modification is made.

FCC RF Radiation Exposure Statement : This equipment complies with FCC radiation exposure limits set forth for an uncontrolled environment. This transmitter must not be co-located or operating in

conjunction with any other antenna or transmitter. This equipment should be installed and operated with minimum distance 20 cm (7.8 inches) between the antenna and your body. Users must follow the specific operating instructions for satisfying RF exposure compliance.

CAUTION: Regulations of the FCC and FAA prohibit airborne operation of radio-frequency wireless devices because their signals could interfere with critical aircraft instruments.

Responsible Party:

LG Electronics USA, Inc. 1000 Sylvan Avenue
Englewood Cliffs, NJ 07632
TEL. : +1-800-243-0000

Contents

Safety information2

IMPORTANT SAFETY INSTRUCTIONS5

STEP 1 Getting Started9

Supplied items.....9

Product Overview.....9

Power On / Off10

STEP 2 Charging Battery 10

STEP 3 Inserting Photo Paper 12

Cleaning printer head using Smart Sheet 13

About photo paper14

Paper Jam Solution15

STEP 4 Installing App 15

Installing App for Android phone15

App Setting16

Installing App for iPhone17

Setting Bluetooth of iPhone17

Installing App for Windows phone18

Setting Bluetooth of Windows phone18

STEP 5 Printing Photo 19

Printing using Android phone19

Printing using iPhone22

Printing using Windows phone24

Using the edit mode26

Notes on the printing26

Checking where to buy paper27

Updating the device28

Checking Label..... 29

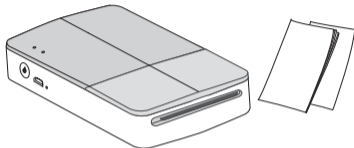
About LED Indicator 30

Specifications 32

Troubleshooting 33

STEP 1 Getting Started

Supplied items



LG Pocket Photo Printer

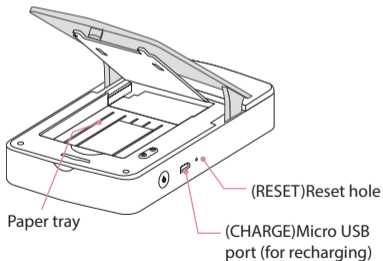
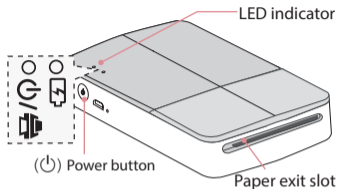
Simple manual



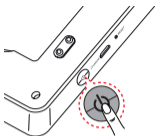
USB cable

- Depending on the model or region, supplied items may differ. (ex. USB cable etc.)

Product Overview



Power On / Off



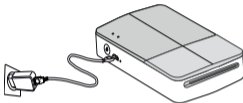
Press (⏻) power button for 2 sec. to turn on or off.

! Note

- When turning the device on, LED indicator ⏻/🖨️ flashes for 3 sec. Then printing is available.
- For more information, see "About LED indicator".

STEP 2 Charging Battery

This device uses a built-in battery. Before using it, fully charge the battery using a Smart phone USB data cable (Micro 5 pin) or adapter. (Refer to below)



Battery charging time : 1.5 hours

Checking the charging status with LED indicators

- Power-off (●) : Charging (●) : Full charge : (●)
- 0 % : flashes for about 30 sec. and turns off.
- LG Pocket Photo is always charged when connected to the power supply except for being printed.

- To charge this product, you must always use a DC 5V, 1A or more. Certified/Listed Adapter which complies with LPS.



Caution

- Handle with care during charging to prevent electric shock.
- Do not place near heating appliance.
- Do not disassemble or deform.
- Do not give shock on.
- Avoid too high or low temperature or humidity.

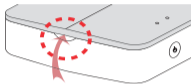


Note

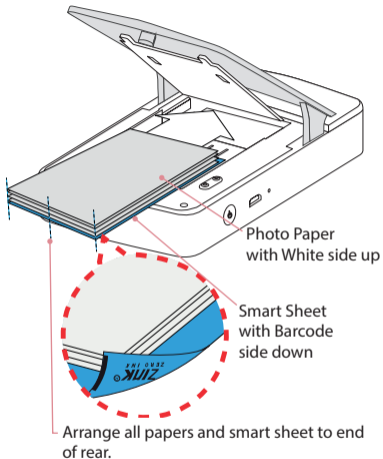
- You can connect the device to PC using a Smart phone USB data cable, but charging time can be longer.
- The operating time on battery may vary depending on the battery status, operational status and environment conditions.
- When the battery is discharged, printing is available after charging it for more than 10 min. (Charge in full to print in a row.)

STEP 3 Inserting Photo Paper

1. Open the upper cover.



2. Unpack the photo paper pouch you bought.
3. Slide smart sheet (blue) and photo papers together into the paper slot, then close the upper cover. Smart Sheet will be ejected automatically before first printing.
 - Do not insert more than 10 Photo papers and 1 Smart Sheet. Otherwise 2 papers may be ejected at once or paper jam may occur.
 - Once the pack is unwrapped, keep the remaining papers after using in an airtight plastic bag.
 - Smart sheet and photo papers are not supplied.



Cleaning printer head using Smart Sheet



Smart sheet (Cleaner)

When you insert new smart sheet and photo papers, this device scans the barcode of smart sheet to maintain optimized photo paper. (It will be ejected before the first printing.)

To maintain the best quality, remove foreign material of the head using cleaning feature.

Note on Smart sheet

When using Smart Sheet, it should be used with photo papers in the same pouch.

- Using smart sheet from other pouch may result in low quality.
- If print quality is abnormal or low, print out the smart sheet 3-5 times repeatedly.
- Reuse the smart sheet until use up the photo papers from same pouch.

About photo paper



Photo paper pouch

Use exclusive photo paper for LG Pocket Photo.

Otherwise, the print quality cannot be guaranteed, and it may cause damage of Pocket Photo.

Note on Photo paper

- Do not damage or bend the papers.
- Using soiled paper may result in malfunction.
- Ensure to use the papers within its valid date.

- Handle with care not to get dirt on, when you touch the paper.
- Once unpacked, the papers may begin to curl up or discolor after a period of time. It is recommended to use them as soon as possible.
- Using photo papers from other company may result in malfunction, paper jam or low quality.
- Do not place inside a car or, expose to direct sunlight or moisture.
- Do not leave in a place where the temperature or humidity is too high or low. It may reduce the quality of the printed photo.

Paper Jam Solution

Do not pull the paper out. Turn the device off and on again, the paper will be ejected automatically.

- If there are foreign material or dust on the roller, it may not be ejected properly.
In that case, remove the foreign material of the head with scotch tape first. And then, clean using smart sheet and try again.
- If the photo paper has bent, paper jam may occur.
- If this problem is not solved, please refer to "Troubleshooting".

STEP 4 Installing App

Installing App for Android phone

From Play Store (Android market)

Search for "LG Pocket Photo".

Using QR code

Scan the QR code on the product box.

App Setting

Set the options in [Setting].



See "Help" for details

For more information about the App, touch [Help].



- **Bluetooth** : Prints using Bluetooth
- To optimize printing photo, activate all modes and use pocket photo App.

Installing App for iPhone **iOS**

From App Store

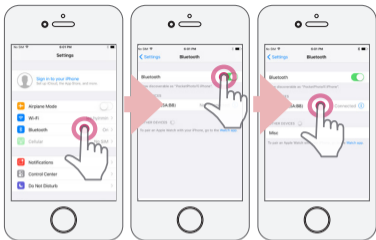
Search for "LG Pocket Photo".

Using QR code

Scan the QR code on the product box.

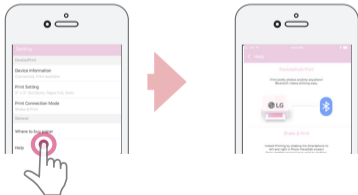
Setting Bluetooth of iPhone **iOS**

1. On your iPhone's home screen, touch [Settings].
2. Touch "Bluetooth" and touch the slider to turn Bluetooth [On].
3. To connect your Pocket Photo device to the iPhone, turn on your device and make sure it is discoverable mode.
4. When you find the device, touch the model name of Pocket Photo on the screen.



See "Help" for details

For more information about the App, touch [Help].



Installing App for Windows phone



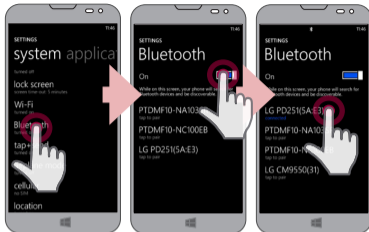
From Store

Search for "LG Pocket Photo".

Setting Bluetooth of Windows phone



1. On your Windows phone home screen, touch [Settings].
2. Select "Bluetooth" on the system and touch the slider to turn Bluetooth [On].
3. To connect your Pocket Photo device to Windows phone, turn on your device and make sure it is discoverable mode.
4. When you find the device, touch the model name of Pocket Photo on the list.
5. After Checking [Connected], Run the App.




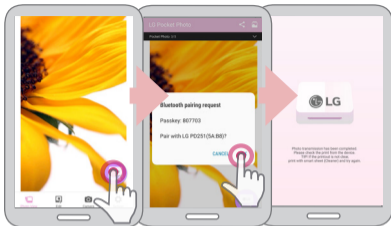
STEP 5 Printing Photo

Printing using Android phone

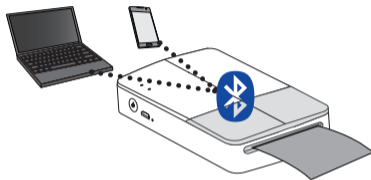
Printing using Bluetooth

Preparation : Turn the device on, and start printing with the LED indicator  turning on.

1. Run LG Pocket Photo App on Android phone.
2. Select a photo to print, and touch [].
3. Touch [OK], then it will start searching for Bluetooth devices.
 - To print, set print mode or the number of photo on the preview screen.
4. When LG Pocket Photo is paired for the first time, [Bluetooth pairing request] appears. To start printing, touch [Pairing] or input the PIN code '0000'.
 - If Smart Sheet is in the device, it will be ejected before the printing starts.



- ❗ You can print photos directly from Android phones or PC via Bluetooth without the App. Choose a photo and select [Bluetooth] in [Share] or [Menu].



Caution

- Check the power of the Pocket Photo, when your device can not search for Bluetooth device.
- The photo file less than 10 MB can be printed.
- Setting screen may differ depending on the phone manufacturer.
- When connecting to the other company's smartphone, some functions may be limited depending on conditions.

Setting Pocket Photo App of Android phone

You can check device/battery status, the number of photos printed, MAC address and device version. And you can change setting of print mode and Auto power off.

1. Run LG Pocket Photo App on Android phone.
(To check [Device Information], set to [On] the Bluetooth of smartphone.)
2. Go to Setting.
3. Touch [Device Information].



4. [Print setting]

| | |
|----------------------------|---|
| Paper Full | Prints without white space. (The edge of the image can be cut off.) |
| Image Full | Prints an image as a whole. (White space can occur at the edge of the paper.) |
| Automatic Device Power Off | Set a time so that the device turns itself off. (Default is [5 min].) |

Note

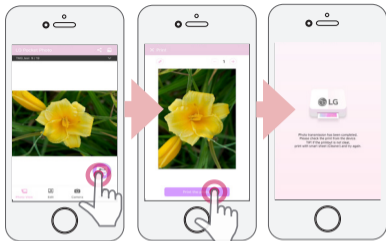
- The longer time you set [Automatic Device Power Off] to, the more the battery consumption is. The number of maximum prints may differ.
- It is recommended to keep default setting of the device.

Printing using iPhone **iOS**

Printing using Bluetooth (📶)

Preparation : Turn the device on, and start printing with the LED indicator 📶/🖨️ turning on.

1. Run LG Pocket Photo App on iPhone.
2. Select a photo to print, and touch [🖨️].
3. "Print" message appears. Touch [Print the photo] to start printing.
 - To print, set print mode or the number of photo on the preview screen.
 - If Bluetooth is not connected, " Paired device not found" message is appeared. (refer to the Bluetooth setting for iPhone.)
 - If Smart Sheet is in the device, it will be ejected before starting printing.



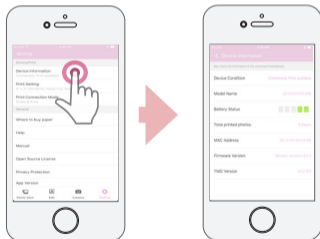
! **Note**

In case of iPhone/iPad, the last paired iPhone/iPad is paired to PocketPhoto automatically when you turn on PocketPhoto if the Bluetooth on your iPhone/iPad is on.

Setting iPhone Pocket Photo App

You can check device/battery status, the number of photos printed, MAC address and device version. And you can change setting of print mode and Auto power off.

1. Run LG Pocket Photo App on iPhone.
(To check [Device information], set to [On] the Bluetooth of iPhone.)
2. Go to Setting.
3. Touch Setting options to change.



4. [Print setting]

| | |
|----------------------------|---|
| Paper Full | Prints without white space. (The edge of the image can be cut off.) |
| Image Full | Prints an image as a whole. (White space can occur at the edge of the paper.) |
| Automatic Device Power Off | Set a time so that the device turns itself off. (Default is [5 min].) |

! Note

- The longer time you set [Automatic Device Power Off] to, the more the battery consumption is. The number of maximum prints may differ.
- It is recommended to keep default setting of the device.

Printing using Windows phone





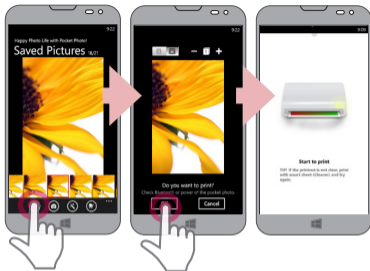
Printing using Bluetooth (Bluetooth icon)

Preparation : Turn the device on, and start printing with the LED indicator  turning on.

1. Run LG Pocket Photo App on Windows phone.
2. Select a photo to print, and touch .
3. "Do you want to print?" message appears. Touch [OK] to start printing.
 - If the printing is not started, check power of the device.
 - If Bluetooth is not connected, select registered Pocket photo device or reset Bluetooth by selecting [Search].

Print mode

-  Paper Full: Prints without white space. (The edge of the image can be cut off.)
-  Image Full: Prints an image as a whole. (White space can occur at the edge of the paper.)



Note

- If Smart Sheet is in the device, it will be ejected before starting printing.
- To print, set print mode or the number of photo on the preview screen.

See “Help” for details

For more information about the App, touch



You can download the Owner's manual at <http://popoguide.lge.com> using PCs.

Note on Windows Phone

- You can check Manual, Share, App version and Where to buy paper by touching [⋮].
- In case of Windows phone, to print a photo in the normal folder via bluetooth it is available only when using the app.
- The limitations of Windows Phone
 - Device information is not supported.
 - Windows phone does not support firmware / TMD* update of Pocket Photo.(At <http://www.lge.com> , under Downloadable, you can download the Pocket Photo update tool for Windows PCs.)

TMD*: TMD means colour correction data.

Using the edit mode

You can edit a photo quality, color or size using edition tool on the menu.

Use the edit function with a variety of image correction filter



Notes on the printing

- The printed image may differ from the original image due to the printing method (thermal transfer printing).
- Use the latest App of LG Pocket Photo (when printing a photo, it makes optimized image.)
- The higher resolution of the image, the printed picture has the higher quality. (The proper resolution is more than 1280 x 2448 pixel.)
- Once the battery is fully charged, you can print up to 20 papers in a row.
- The maximum prints are based on ISO 24712 Colour image standard and the number of photos printed may vary depending on user environmental conditions (time, temperature, humidity or printing method).
- If there are more than a LG Pocket Photo device, check MAC address on the label to choose one you want to use. (Refer to "Checking Label".)

- The Bluetooth searching and transferring may fail depending on its environment. Check the Bluetooth condition on your phone and try again.
- If pairing multiple smartphone, re-pairing may occur.



Caution

- Do not pull paper out by force during printing.
- Do not open the upper cover during printing or do not print the photo, when upper cover is opened. It may cause damage of Pocket Photo.
- Do not place an object in front of the Paper exit slot.
- If the device is vibrated or given shock, the quality of the printed photo may be reduced.

- Printing for Passport / VISA image may be unsuitable as the case may be. Printing the image taken in studio is recommended.
- The printing quality may differ depending on the original image (When too dark or dim). Use the image after correcting it using Pocket photo App.
- Pocket photo APP's resolution is optimized in 1440 x 2560 pixel. (Android)

Checking where to buy paper

1. To check where to buy paper, go to setting or menu screen.
2. After touching [Where to buy paper], select a country.

Updating the device

You can update the device by pairing smart phone to the latest software to enhance the products operation and /or add new features.

1. Connect the device and smart phone via Bluetooth.
2. Run the Pocket Photo App and then, touch [Setting] menu.
3. The current version and higher version are shown if new version is existed.
4. Touch [Firmware Version] button to update the device.

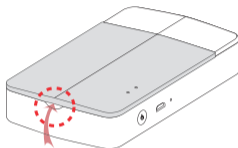


Note

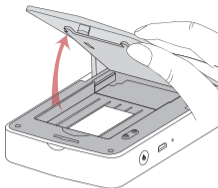
- During the device update procedure, do not turn off the power or press Reset button.
- This device cannot be updated to previous version.
- If there is no higher version, the Message [This is the latest version.] appears.
- At <http://www.lg.com> , under Downloadable, you can download the Pocket Photo update tool for Windows PCs.

Checking Label

In case there are more than a LG Pocket Photo device, check MAC address on the product label to choose one you want to use.



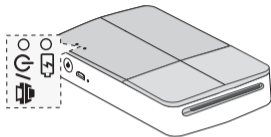
1. Open the upper cover.















2. You can find the product label.


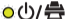
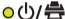





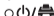
About LED Indicator





The LED indicators shows the device condition.



| Section | LED color | Condition/ Power | Description |
|---------|--|-----------------------|--|
| Power |   | Waiting/ On | Waits for printing. Device turns itself off, if it is left unused for a while. |
| |   | Turning on/ Blinks | Until ready after turning on |


| | | | |
|---------------------|--|---|---|
| Power |   | off | To print, turn on the device. |
| |   | Charging | Battery is charging |
| |   | Full charge | Battery is fully charged. |
| Normal operation |   | Charge the battery/ Blinks Slowly | Remaining battery is less than 30% |
| | | Charge the battery/ Blinks quickly | (Remaining battery is less than 10%) To print, charge the device. |

| | | | |
|------------------|--|---|---|
| Normal operation |   | Ready to turn off/Blinks quickly | Auto power off is set. |
| |  | Printing, Cooling mode/ Blinks | Transferring data via Bluetooth or Printing (While continuous printing, battery temperature is overheated. Wait for a while.) |
| |   ↓   ↓   | Updating /Blinks - Turned on - Turned off | Data is downloaded and installed. When update is complete, LED is turned off. |

| | | | |
|-------|--|---------------------------------|--|
| Error |   | Low temperature/ Blinks | Raise the Pocket photo or ambient temperature then try again in a while. |
| | | No paper, Paper jam/ Blinks | Arrange the papers then insert them to try again. |
| | | Unsupported file format/ Blinks | Convert to JPEG formats. |
| | | No data reception/ Blinks | Try again in a while. |
| |   | Charging error/Blinks | Unplug the charging cable and try again in a while. |

Specifications

| | |
|---------------------------------|---|
| Photo size | 50 mm x 76 mm (Dot size : 640 x 1224) |
| Image file type/ size | PNG (Max: 1350x1050), JPEG (Baseline) / less than 10 MB (Progressive JPEG is not supported.) |
| Media paper used | ZINK™ Photo Paper (exclusive for LG) |
| Media paper storage environment | Temperature : 20 - 25 °C Humidity : 40 - 55 % RH |
| Device operation environment | Temperature : 5 - 40 °C Humidity : less than 70 % (35 °C) (An temperature limitation message appears on the App.) |
| Optimum print environment | Temperature : 15 - 32 °C Humidity : less than 70 % (32 °C) |

| | |
|------------------------|--|
| LED indicator | Power / Waiting / Bluetooth transmitting / Charged / Discharged / Error / Condition of printer/ Update |
| Communication | Bluetooth 4.0 |
| External connector | Micro USB port for charging battery |
| Bus Power Supply (USB) | (Adapter) DC 5 V  1.0 A |
| Battery life | 470 mAh Li-Polymer rechargeable battery |
| Image resolution | More than 1280 x 2448 pixels |
| Dimensions (W x D x H) | 79 mm x 128 mm x 23.5 mm |
| Net Weight | 183 g |

| | |
|-------------------------------------|---|
| Pocket Photo App supporting version | <ul style="list-style-type: none"> • Android v4.4 or higher • iOS v9.0 or higher • Windows Phone 8.0 or higher |
|-------------------------------------|---|


| |
|---|
| <ul style="list-style-type: none"> • Your phone may be incompatible with the device depending on its manufacturer, environment or (Android or iOS) operating system. • Design and specifications are subject to change without prior notice. • All other product and brand names are trademarks or registered trademarks of their respective owners. |
|---|

Troubleshooting

| Symptom | Cause / Solution |
|---------------------------------------|--|
| No power | <p>The battery is discharged.</p> <p>Be sure the device is connected to charger or PC properly when charging.</p> |
| Bluetooth pairing does not work well. | <p>Switch Bluetooth off and on again on your smartphone, then pair with the device in the smartphone's settings.</p> <p>Turn on the device and try printing (pairing) again in 5 sec.</p> <p>Be sure the device is on.</p> |

| | |
|--|--|
| The paper is jammed before printing. | <ol style="list-style-type: none"> 1. Turn the device off and on again then paper is ejected automatically. 2. If above solution does not work, open the Upper cover and arrange the papers. Then insert them with Smart Sheet (Blue) or pull the paper out slowly and gently. |
| The paper is jammed during printing. | |
| The printed photo has lines. | Open the Upper cover, arrange the papers and insert them with Smart Sheet locating at the bottom. Then try printing again. (To open the Upper cover, refer to "Checking Label". |
| No or incomplete image is printed. | |
| The edge of the image on the photo is cut off. | Set Print mode to [Image Full] in the App's setting then the image is printed as a whole. |

| | |
|---|---|
| White space appears at the edge of the paper. | <p>When print mode is set to [Image Full], white space may appear if the aspect ratio of the paper and your image is not the same.</p> <p>When print mode is set to [Paper Full] , the edge of the image can be cut off or white space at the edge of the paper may appear.</p> |
|---|---|

| | |
|--------------------------------------|--|
| Quality of printed photo is too low. | In case you magnify an image using [] menu in the App, the quality of the printed photo may be reduced. |
| | Turn off the device and insert Smart Sheet locating at the bottom of the papers. Then try printing again. |
| | Be sure the photo size is bigger than the proper resolution.(1280 x 2448 pixels) |
| | When using Smart Sheet, it should be used with photo papers in the same pouch. |
| | If you use other company's photo paper, it cannot be guaranteed for print quality or damage of pocket photo. |

| | |
|-------------------------------------|---|
| Device does not print. | Preheating is needed. Wait for about 2 min. |
| | Be sure there are papers in the device. |
| | It may take time to print after Smart Sheet is ejected. |
| | Be sure the photo file is less than 10 MB. Only baseline JPEG, PNG (Max: 1350x1050) format is supported. |
| Device is turned off automatically. | Check [Automatic Device Power Off] time in the App's setting. |
| Above solutions do not work. | Press Reset hole with a pointed thing like mechanical pencil to initialize. |

