


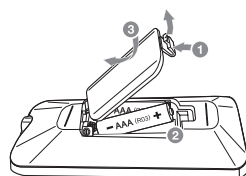
Additional Information

Specifications

Power Requirements	Refer to the main label on the unit.
Power Consumption	Refer to the main label on the unit.
Dimensions (W x H x D)	Approx. 615 mm x 272 mm x 318 mm
Bus Power Supply (USB)	5 V  1 A
Amplifier (Total RMS output power)	220 W RMS

Design and specifications are subject to change without notice.

Replacement of battery



SIMPLE MANUAL

High Power Speaker System

Please read this manual carefully before operating your set and retain it for future reference.
To view the instructions of advanced features, visit <http://www.lg.com> and then download Owner's Manual. Some of the content in this manual may differ from your unit.

MODEL
FJ5

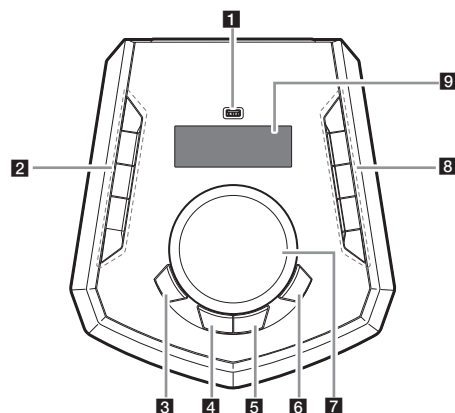


www.lg.com
Copyright © 2018 LG Electronics Inc. All Rights Reserved.

ENGLISH



Top Panel



- 1** USB Port
You can play sound files by connecting the USB device.
- 2** (Standby)
Turns the power on or off
#/B KEY CHANGER
Changes the key to suit your vocal range.
VOICE CANCELLER
You can reduce the vocal tones during music playback from various input sources.
ECHO/DEMO
- Selects ECHO mode.
- In power off status, if you press **ECHO/DEMO**, shows DEMO mode.
- 3** LIGHTING
Selects the lighting effects.
- 4** MIC (Microphone) VOL. (Volume)
Select to adjust microphone volume.
(Adjust microphone volume by rotating **MASTER VOLUME/MULTI JOG**.)
- 5** VOCAL EFFECTS
Selects VOCAL EFFECTS mode.
- 6** BASS BLAST
Press to select BASS effect directly.

- 7** MASTER VOLUME/MULTI JOG
- Adjust speaker volume.
- Adjust microphone volume.
- Selects lighting mode.
- Selects VOCAL EFFECTS mode.
- 8** F (Function)
Selects the function and input source.
>>I (Skip/Search)
- Skips forward.
- Searches for a section within a file.
- Selects the radio stations.
>II (Play/Pause)
- Starts or pauses playback.
- Selects Stereo/Mono (Horizon mode only).
I<< (Skip/Search)
- Skips backward.
- Searches for a section within a file.
- Selects the radio stations.
WIRELESS LINK
- Selects MASTER or SLAVE on WIRELESS PARTY LINK mode.
- Enable or disable WIRELESS PARTY LINK mode.
- 9** Display window

Controller App



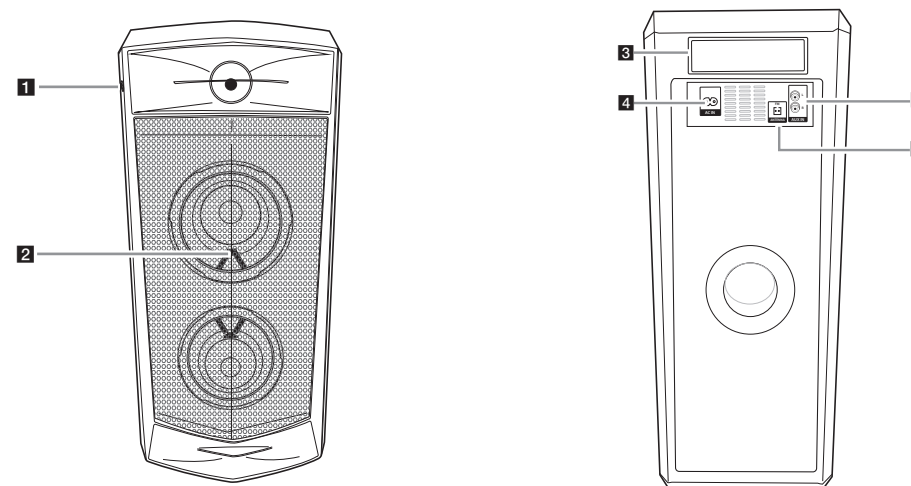
Download the **Music Flow Bluetooth** App to your device. (Android only)

LG Sound Sync (Wireless)



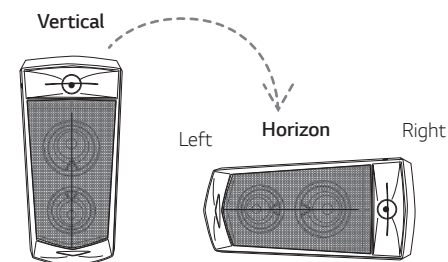
For more information, download the online owner's manual. <http://www.lg.com>

Front panel / Rear panel



- 1** MIC (Microphone) jack
- 2** Remote sensor
- 3** Handle
- 4** AC IN socket
- 5** ANTENNA (FM)
- 6** AUX IN (L/R)
Connect an auxiliary device.

How to place the unit



On the horizon mode, you can hear the stereo sound and on the vertical mode, the sound transforms into a mono signal.