



ENGLISH

PORTUGUÊS

FRANÇAIS

SIMPLE MANUAL

DVD Wireless Home Theater System

To view the instructions of advanced features,
visit <http://www.lg.com> and then download Owner's Manual.
Some of the content in this manual may differ from your unit.

MODEL
LHD655BW



www.lg.com



Front Panel



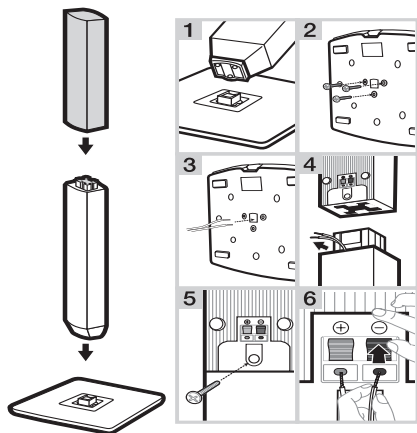
- MIC 1/2** Connect a microphone.
PORT. IN Connect to a Portable device.
USB Port Connect a USB device.
△ Disc Tray Open / Close
>II Starts / Pauses playback.
□ Stops playback.
F Changes the input source or function.
- / + Adjusts volume.
⏻ / I Power On / Off

Rear Panel



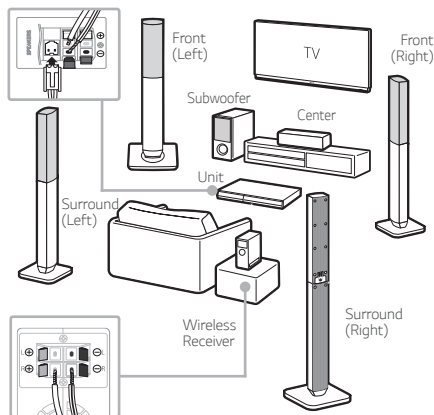
- SPEAKERS** Connect to speakers.
HDMI OUT TO TV Connect to TV.
AUX (L/R) INPUT Connect to analogue device.
VIDEO OUT Connect to TV.
OPTICAL IN Connect to digital device.
ANTENNA FM Connect to radio antenna.

1 Speaker Assembling

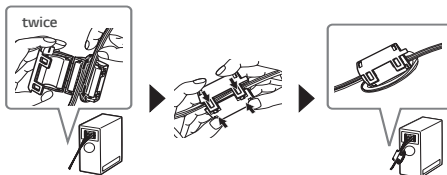


2 Speaker Connection

! Speaker design and connection method may be different according to models.



About Ferrite Core (Optional)




3 Pair Up with Wireless Receiver

- 1 Connect the rear speakers to the wireless receiver.
- 2 Connect the power cord of wireless receiver to the outlet.
- 3 Turn on the player :
The player and wireless receiver will be **automatically** connected. A yellow-green LED on the wireless receiver will light on.



If no sound is heard from the rear speakers connected to wireless receiver, please follow as below.

- i. Adjust volume level of player to minimum. "VOL MIN" appears on display window.
- ii. Press and hold  (Mute) button on the remote control about 3 seconds. The red LED will flicker.
- iii. Press and hold **PAIRING** on the rear of wireless receiver for more than 5 seconds using point of a pen.
- iv. Disconnect the power cord of the player and the wireless receiver. Connect them again.

4 TV Connection

HDMI & Optical Connection

- 1 Connect the Player to the TV using HDMI & Optical cable.
- 2 Set the input selector to HDMI on the TV.
- 3 Set up [External Speaker (Optical)] on your TV setting menu.
- 4 Follow the instructions on the TV screen using remote control.



5 Home Menu

Home menu appears on the TV screen. Enjoy various functions on the player.




LG Sound Sync (Wireless)



For more information, download the online owner's manual <http://www.lg.com>

Additional Information

Specification

Power requirements	Refer to main label.
Power consumption	Refer to main label. Networked standby : 0.4 W (If all network ports are activated.)
Dimensions (W x H x D)	Approx. 360 mm x 60.5 mm x 299 mm
Net Weight	Approx. 2.69 kg
Bus Power Supply (USB)	5 V  500 mA
Amplifier (Total RMS output power)	1,000 W

Design and specifications are subject to change without notice.

How to disconnect the wireless network connection or the wireless device

Turn off the unit by pressing the power button for more than 5 seconds.

Replacement of battery

