

## SIMPLE MANUAL

# Sound Bar

Please read this manual carefully before operating your set and retain it for future reference.

To view the instructions of advanced features, visit <http://www.lg.com> and then download Owner's Manual.

Some of the content in this manual may differ from your unit.

MODEL  
SK1



MFL70443680

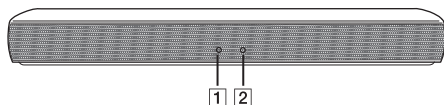
[www.lg.com](http://www.lg.com)

Copyright © 2018 LG Electronics Inc. All Rights Reserved.

ENGLISH	ČESKY	SLOVENČINA
DEUTSCH	SLOVENČINA	SHQIP
FRANÇAIS	POLSKI	BOŠANSKI
NEDERLANDS	ROMÂNĂ	SVENSKA
ITALIANO	LATVIEŠU	DANSK
ESPAÑOL	HRVATSKI	NORSK
ΕΛΛΗΝΙΚΑ	SRPSKI	SUOMI
PORTUGUÊS	БЪЛГАРСКИ	
MAGYAR	МАКЕДОНСКИ	



## Front Panel



### 1 State LED

- White (Staying on): Optical function is selected.
- White (Blinking twice and staying on): LG Sound Sync (Optical) function is selected.
- Green (Staying on): Portable function is selected.
- Red (Staying on): Standby mode without network connection.

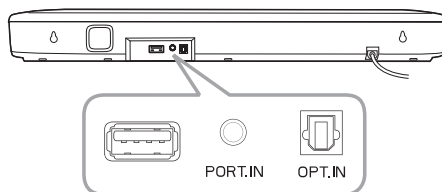
### 2 Bluetooth LED

- Blue (Blinking): Waiting for **Bluetooth** connection.
- Blue (Staying on): Paired with **Bluetooth** device.



This unit operates only with the remote control.

## Rear Panel



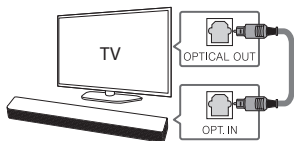
**USB** (Service only) . . . . . S/W download connector.

**PORT. IN** (Portable) . . . . . Connect to a portable device.

**OPT. IN** (Optical) . . . . . Connect to an optical device.

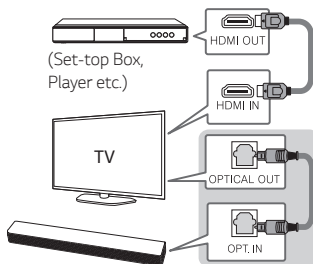
## TV Connection

- 1 Connect the sound bar to the TV using an optical cable.
- 2 Set up [External Speaker (Optical)] on your TV setting menu.



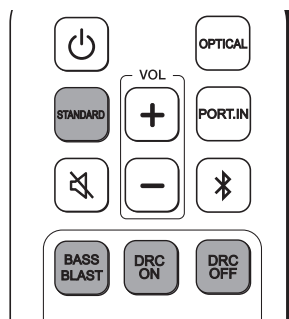
## Additional Device Connection

- 1 Connect to the external device as follows.



- 2 Set the input source by pressing **OPTICAL** on the remote control.

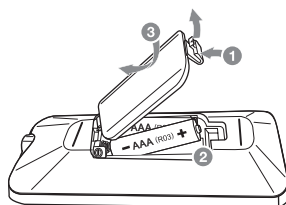
## Remote control



**STANDARD/BASS BLAST** : Selects the sound effect.

**DRC ON/OFF** : Makes comfortable sound at Dolby Digital.

## Replacement of battery




## Additional Information

### Specification

Power requirements	Refer to the main label.
	Refer to the main label.
Power consumption	Networked standby : 0.5 W (If all network ports are activated.)
Dimensions (W x H x D)	Approx. 650.0 mm x 79.0 mm x 94.0 mm With foot
Amplifier (Total RMS Output power)	40 W RMS

Design and specifications are subject to change without notice.

### How to disconnect the wireless network connection or the wireless device

Press and hold  (Mute) on the remote control for about 2 seconds and turn off the unit.

### Declaration of Conformity



Hereby, LG Electronics declares that the radio equipment type Sound Bar is in compliance with Directive 2014/53/EU. The full text of the EU declaration of conformity is available at the following internet address:

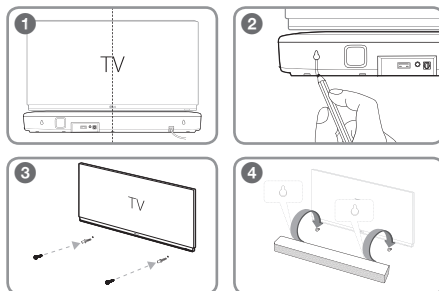
<http://www.lg.com/global/support/cedoc/cedoc#>

For consideration of the user, this device should be installed and operated with a minimum distance of 20 cm between the device and the body.

Frequency range	Output power (Max.)
2402 to 2480 MHz	10 dBm

### Wall mounting (Optional)

You can mount the main unit on a wall by using holes on the rear of the unit. For details, download the online owner's manual <http://www.lg.com>



 **BUY :**    