


Additional Information

Specification

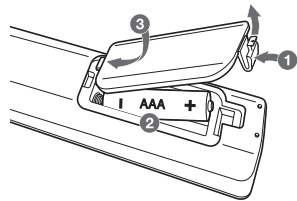
Power requirements	Refer to main label on the bottom panel.
Power consumption	Refer to main label on the bottom panel. Networked standby : 0.5 W (If all network ports are activated.)
Dimensions (W x H x D)	Approx. 410 mm x 55 mm x 260 mm
Net Weight (Approx.)	2.7 kg
Bus Power Supply (USB)	5 V  500 mA
Total amplifier	1200 W

Design and specifications are subject to change without notice.

How to disconnect the wireless network connection or the wireless device

Turn off the unit.

Replacement of battery



Open Source Software Notice Information

To obtain the source code under GPL, LGPL, MPL, and other open source licenses, that is contained in this product, please visit <http://opensource.lge.com>. In addition to the source code, all referred license terms, warranty disclaimers and copyright notices are available for download. LG Electronics will also provide open source code to you on CD-ROM for a charge covering the cost of performing such distribution (such as the cost of media, shipping, and handling) upon email request to opensource@lge.com. This offer is valid for three (3) years from the date on which you purchased the product.

Customer Support

You can update the Player using the latest software to enhance the products operation and/or add new features. To obtain the latest software for this player (if updates have been made), proceed the software updates or visit <http://www.lg.com> or contact LG Electronics customer care center.

SIMPLE MANUAL

3D Blu-ray™ / DVD Home Theater System

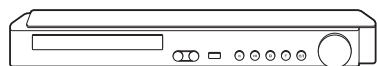
To view the instructions of advanced features, visit <http://www.lg.com> and then download Owner's Manual. Some of the content in this manual may differ from your unit.

LHB755W



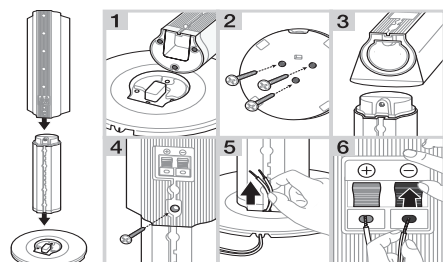


Front Panel

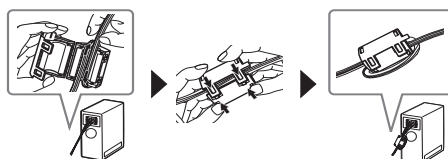


- MIC 1/2** Connects a microphone.
- USB Port** Connects a USB device.
- Disc Tray Open / Close
- Starts / Pauses playback.
- Stops playback.
- Changes the input source or function.
- Power On / Off
- Volume knob** Adjusts volume.

1 Speaker Assembling



About Ferrite Core (Optional)



3 Pair Up with Wireless Receiver

- 1 Connect the rear speakers to the wireless receiver.
- 2 Connect the power cord of wireless receiver to the outlet.
- 3 Turn on the player:
The player and wireless receiver will be **automatically** connected. A yellow-green LED on the wireless receiver will light on.

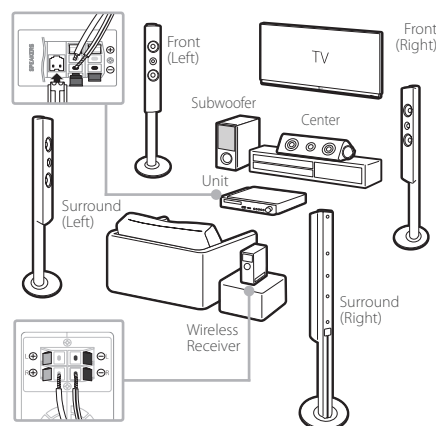
Rear Panel



- SPEAKERS** Connects to speakers.
- LAN** Connects to Internet.
- HDMI OUT (TV ARC)** Connects to TV.
- HDMI IN 1, 2** Connects to digital device.
- ANTENNA FM** Connects to radio antenna.
- AUX (L/R) INPUT** Connects to analogue device.
- OPTICAL IN** Connects to digital device.

2 Speaker Connection

! Speaker design and connection method may be different according to models.



If no sound is heard from the rear speakers connected to wireless receiver, please follow as below.

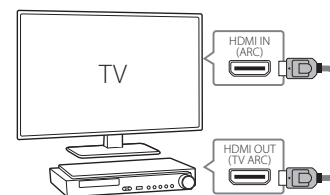
- i. Adjust volume level of player to minimum. "VOL MIN" appears on display window.
- ii. Press and hold (MUTE) button on the remote control about 3 seconds. "WL RESET" appears on display window.
- iii. Press and hold **PAIRING** on the rear of wireless receiver for more than 5 seconds using point of a pen.
- iv. Disconnect the power cord of the player and the wireless receiver. Connect them again.

4 TV Connection

Connect with the Player and TV using HDMI ARC (A) or HDMI & Optical (B).

A HDMI(ARC) Connection

- 1 Connect the Player to the TV using HDMI cable.
- 2 Set the input selector to HDMI on the TV.
- 3 Set up [External Speaker (HDMI ARC)] on your TV setting menu.
- 4 Follow the instructions on the TV screen using remote control.



B HDMI & Optical Connection

- 1 Connect the Player to the TV using HDMI & Optical cable.
- 2 Set the input selector to HDMI on the TV.
- 3 Set up [External Speaker (Optical)] on your TV setting menu.
- 4 Follow the instructions on the TV screen using remote control.



5 Home Menu

After initial setup, Home menu appears on the TV screen. Enjoy various functions on the player.



To enjoy online services, the player should be connected to internet through wired or wireless connection.

Controller App



Download the LG AV Remote App to your device.

LG Sound Sync (Wireless)



For more information, download the online owner's manual. <http://www.lg.com>

Private Sound Mode



With MUSICflow

