

SIMPLE MANUAL

3D Blu-ray™ / DVD Home Theater System

To view the instructions of advanced features,
visit <http://www.lg.com> and then download Owner's Manual.
Some of the content in this manual may differ from your unit.

MODEL
LHB645N

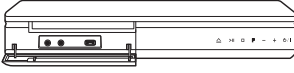


www.lg.com

Copyright © 2017 LG Electronics. All Rights Reserved



Front Panel



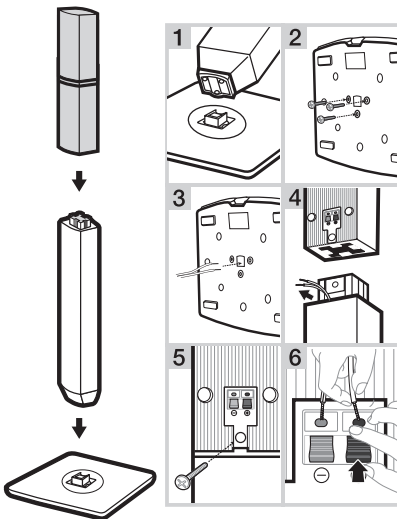
- MIC 1/2** Connects a microphone.
- USB Port** Connect a USB device.
- △** Disc Tray Open / Close
- >||** Starts / Pauses playback.
- Stops playback.
- F** Changes the input source or function.
- / +** Adjusts volume.
- ⏻ / I** Power On / Off

Rear Panel



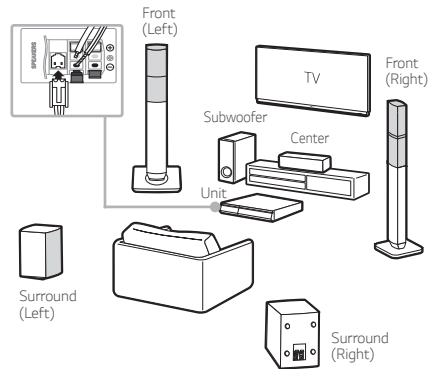
- SPEAKERS** Connect to speakers.
- LAN** Connect to Internet.
- HDMI OUT TO TV** Connect to TV.
- AUX (L/R) INPUT** Connect to analogue device.
- OPTICAL IN** Connect to digital device.
- ANTENNA FM** Connect to radio antenna.

1 Speaker Assembling



2 Speaker Connection

! Speaker design and connection method may be different according to models.



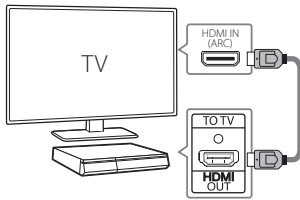
3

TV Connection

Connect with the Player and TV using HDMI ARC (A) or HDMI & Optical (B).

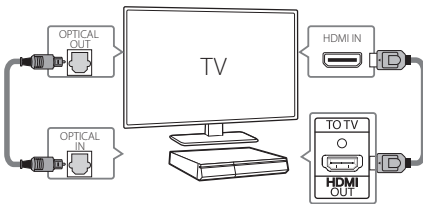
A HDMI(ARC) Connection

- 1 Connect the Player to the TV using HDMI cable.
- 2 Set the input selector to HDMI on the TV.
- 3 Set up [External Speaker (HDMI ARC)] on your TV setting menu.
- 4 Follow the instructions on the TV screen using remote control.



B HDMI & Optical Connection

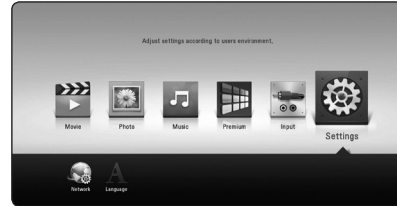
- 1 Connect the Player to the TV using HDMI & Optical cable.
- 2 Set the input selector to HDMI on the TV.
- 3 Set up [External Speaker (Optical)] on your TV setting menu.
- 4 Follow the instructions on the TV screen using remote control.



4

Home Menu

After initial setup, Home menu appears on the TV screen. Enjoy various functions on the player.



To enjoy online services, the player should be connected to internet through wired or wireless connection.

Controller App



Download the LG AV Remote App to your device.

LG Sound Sync (Wireless)



For more information, download the online owner's manual. <http://www.lg.com>

Private Sound Mode




With *MUSICflow*



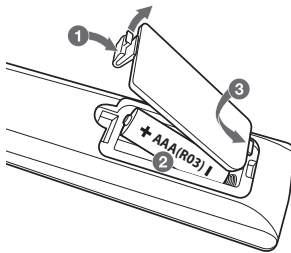
Additional Information

Specification

Power requirements	Refer to the main label.
Power consumption	Refer to the main label.
Dimensions (W x H x D)	Approx. 360 mm x 60.5 mm x 299 mm
Bus Power Supply (USB)	5 V  500 mA
Amplifier (Total RMS output power)	1,000 W RMS

Design and specifications are subject to change without notice.

Replacement of battery



Open Source Software Notice Information

To obtain the source code under GPL, LGPL, MPL, and other open source licenses, that is contained in this product, please visit <http://opensource.lge.com>. In addition to the source code, all referred license terms, warranty disclaimers and copyright notices are available for download. LG Electronics will also provide open source code to you on CD-ROM for a charge covering the cost of performing such distribution (such as the cost of media, shipping, and handling) upon email request to opensource@lge.com. This offer is valid for three (3) years from the date on which you purchased the product.

Customer Support

You can update the Player using the latest software to enhance the products operation and/or add new features. To obtain the latest software for this player (if updates have been made), proceed the software updates or visit <http://www.lg.com> or contact LG Electronics customer care center.

