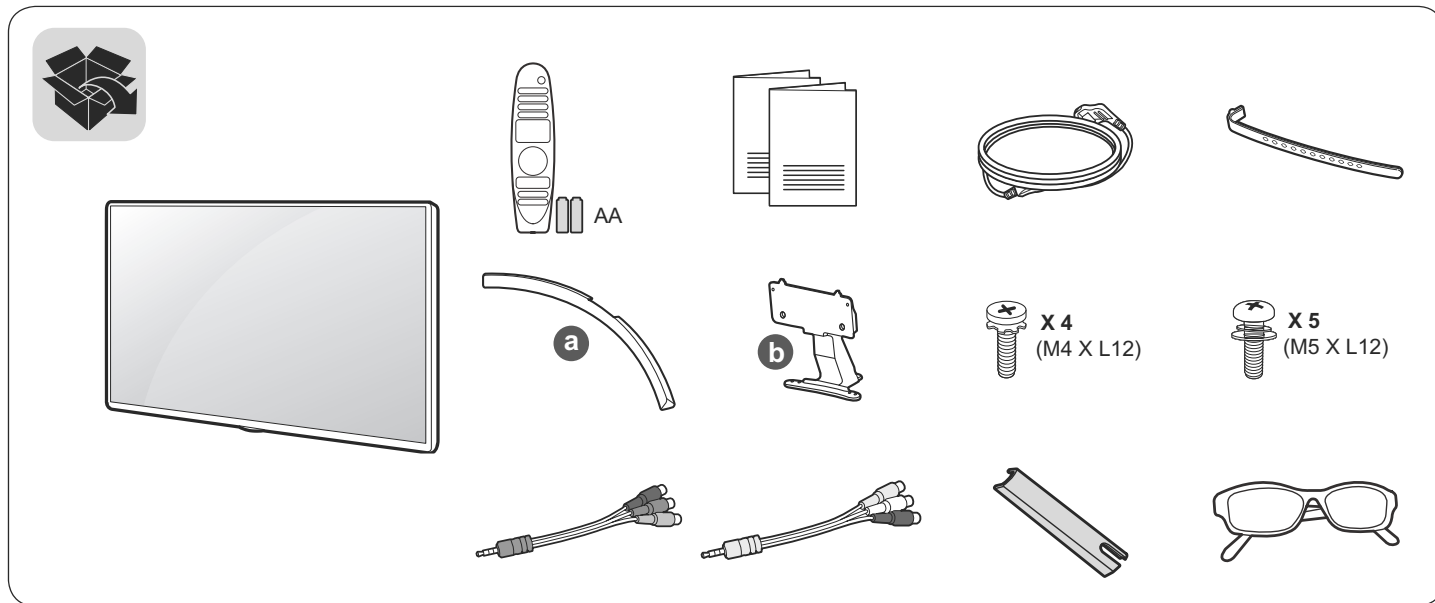


Quick Start Guide



Unpacking

Check your product box for the following items. If there are any missing accessories, contact the local dealer where you purchased your product. The illustrations in this manual may differ from the actual product and item.

*Image may vary depending on model.



www.lg.com

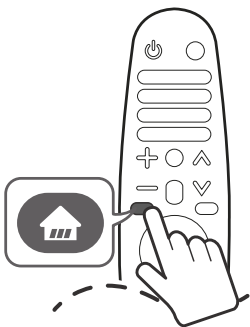
P/No: MFL69446114 (1601-REV00)



English

- Read **Safety and Reference**.
- For the power supply and power consumption, refer to the label attached to the product.

USING THE USER GUIDE



Press the (HOME) button
to access home menu



Navigate & Select
User Guide



Refer User Guide for
details information

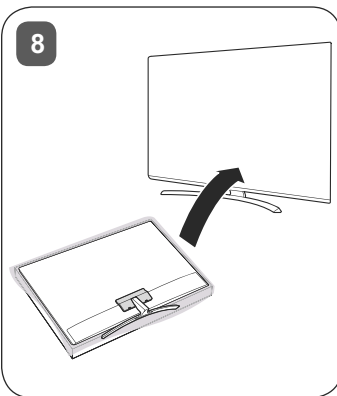
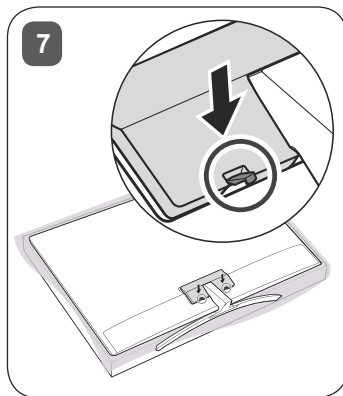
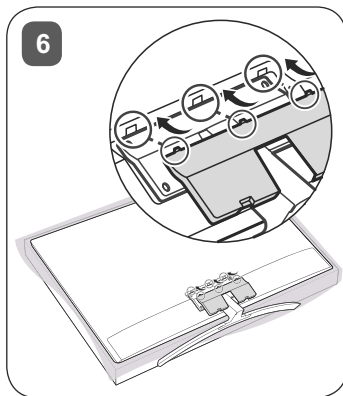
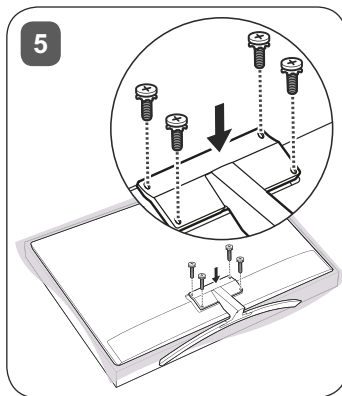
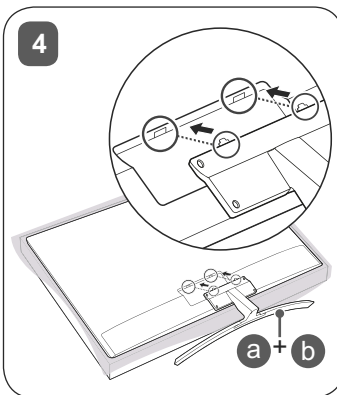
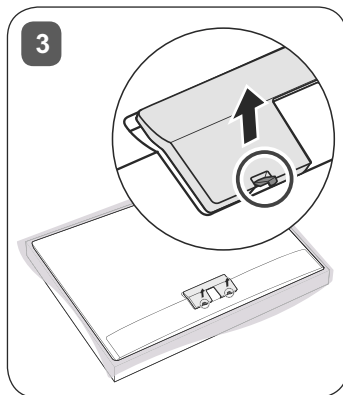
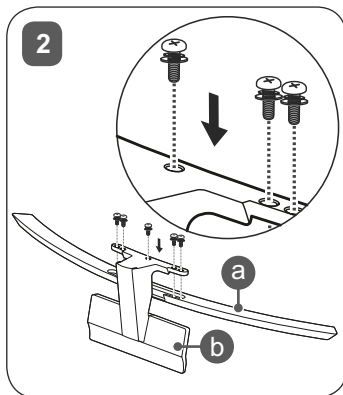
*Image may vary depending on model.



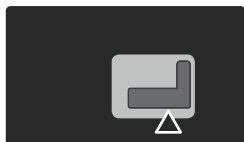
CAUTION

Image shown may differ from your TV

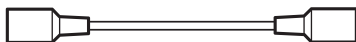
When attaching the stand to the TV set, place the screen facing down on a cushioned table or flat surface to protect the screen from scratches.



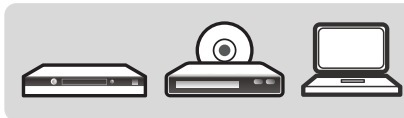
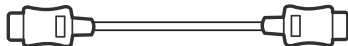
*Image may vary depending on model.



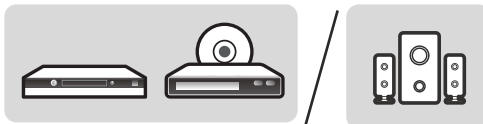
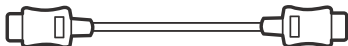
ANTENNA/
CABLE IN



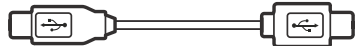
HDMI IN



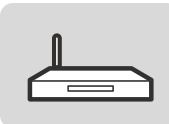
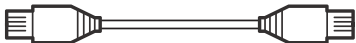
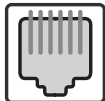
HDMI IN/ARC



USB IN



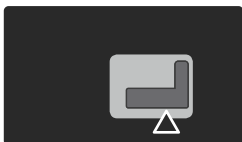
LAN



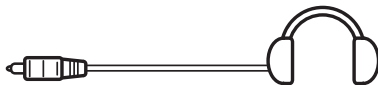
NOTE

- Image shown may vary depending on model.
- All connection cables & devices shown in the picture are not included along with the TV set.

*Image may vary depending on model.



AUDIO OUT/
H/P OUT



OPTICAL DIGITAL
AUDIO OUT



ARC (Audio Return Channel)

- An external audio device that supports SIMPLINK and ARC must be connected using HDMI IN/ DVI IN ARC 2 (ARC)] port.
- When connected with a high-speed HDMI cable, the external audio device that supports ARC outputs optical SPDIF without additional optical audio cable.



NOTE

- It is recommended to use the TV with the HDMI connection for the best image quality.
- Use the latest High Speed HDMI TM Cable with CEC (Customer Electronics Control) function.
- High Speed HDMI Cables are tested to carry an HD signal up to 108p and higher.
- Supported HDMI Audio format : Dolby Digital (32Khz, 44.1Khz, 48Khz), DTS (44.1Khz, 48Khz), PCM (32Khz, 44.1Khz, 48Khz, 96Khz, 192Khz) HDMI 1 port support.
- HDCP 2.2 which is copyright protection for High bandwidth digital content, video material intended to be an antipiracy.

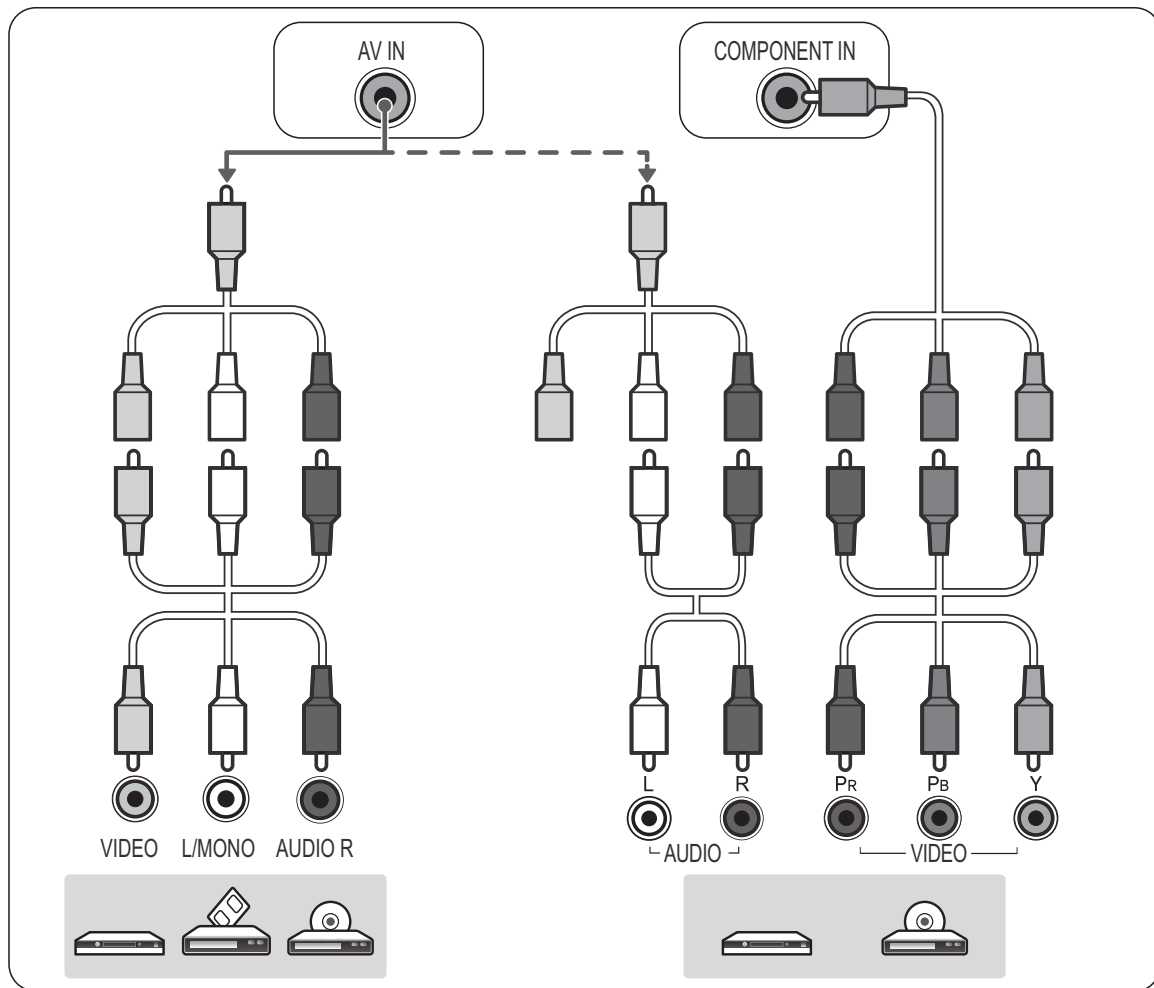
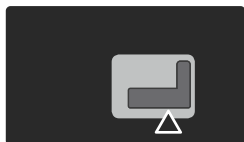


NOTE

- Some USB Hubs may not work. If a USB device connected using a USB Hub is not detected, connect it to the USB port on the TV directly.
- Connect the external power source if your USB is needed.

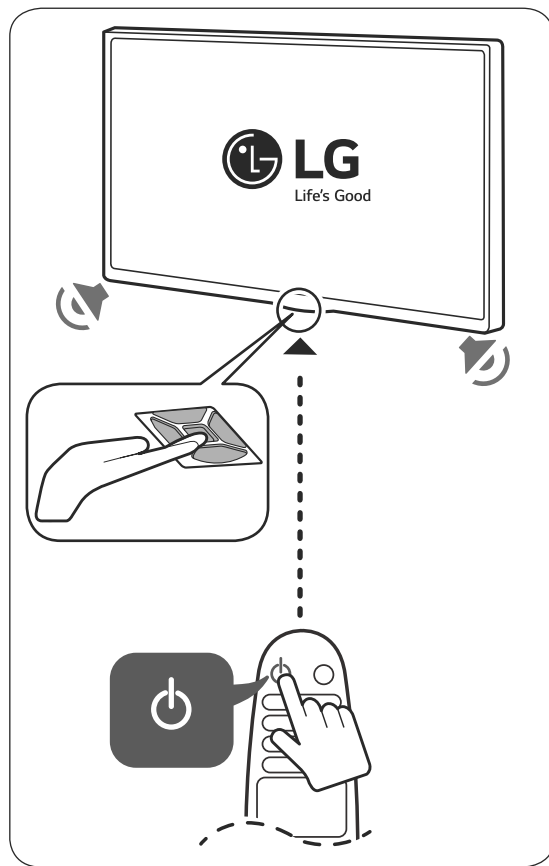
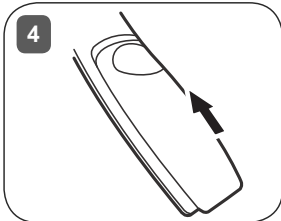
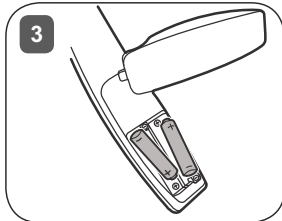
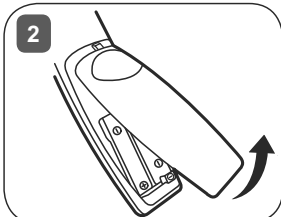
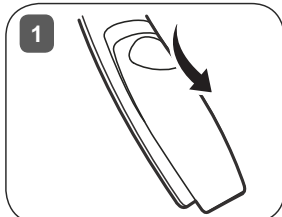
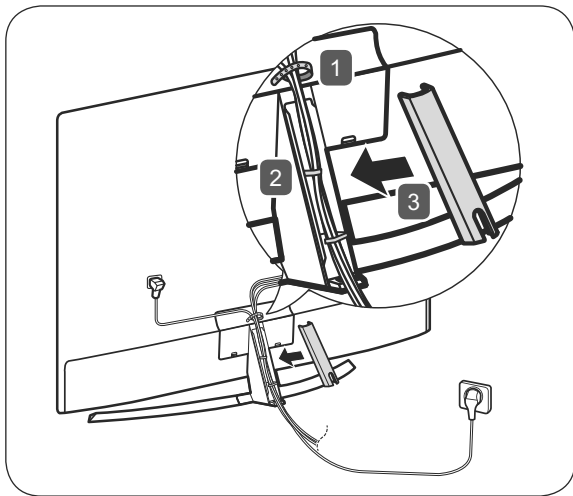
*Image may vary depending on model.

⊕ : Depending on model



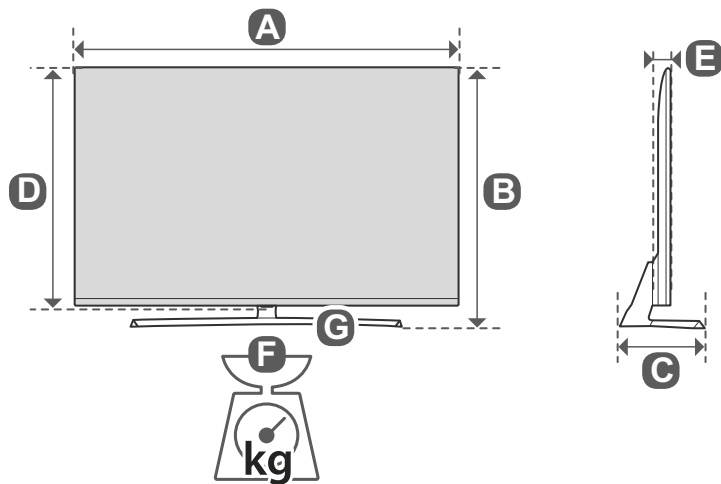
NOTE

*Image may vary depending on model.



! NOTE

*Image may vary depending on model.



	A (mm)	B (mm)	C (mm)	D (mm)	E (mm)	F (kg)	F - G (kg)
49UH850T-TA 49UH850V-TA 49UH850Y-TA	1104.0	698.5	238.4	645.0	51.5	17.8	15.8
55UH850T-TA 55UH850V-TA 55UH850Y-TA	1239.8	774.8	238.4	720.8	51.5	21.2	19.2

Power requirement

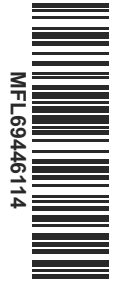
AC 100-240 V ~ 50 / 60 Hz



NOTE

*Image may vary depending on model.

	A (mm)	B (mm)	C (mm)	D (mm)	E (mm)	F (kg)	F - G (kg)
60UH850T-TA 60UH850V-TA 60UH850Y-TA	1348	836.8	281.9	781.5	52.5	25.7	23.5
65UH850T-TA 65UH850V-TA 65UH850Y-TA	1459.5	896.8	281.9	844.5	52.7	32.5	30.3
Power requirement				AC 100-240 V ~ 50 / 60 Hz			



IN002043