



SIMPLE MANUAL

Mini Hi-Fi System

Please read this manual carefully before operating your set and retain it for future reference.

To view the instructions of advanced features, visit <http://www.lg.com> and then download Owner's Manual.

Some of the content in this manual may differ from your unit.

MODEL
CJ98




www.lg.com


ENGLISH




CAUTION
RISK OF ELECTRIC SHOCK
DO NOT OPEN



CAUTION: TO REDUCE THE RISK OF ELECTRIC SHOCK DO NOT REMOVE COVER (OR BACK) NO USER-SERVICEABLE PARTS INSIDE. REFER SERVICING TO QUALIFIED SERVICE PERSONNEL.



This lightning flash with arrowhead symbol within an equilateral triangle is intended to alert the user to the presence of uninsulated dangerous voltage within the product's enclosure that may be of sufficient magnitude to constitute a risk of electric shock to persons.



The exclamation point within an equilateral triangle is intended to alert the user to the presence of important operating and maintenance (servicing) instructions in the literature accompanying the product.

WARNING: TO PREVENT FIRE OR ELECTRIC SHOCK HAZARD, DO NOT EXPOSE THIS PRODUCT TO RAIN OR MOISTURE.

WARNING: Do not install this equipment in a confined space such as a book case or similar unit.

CAUTION: Do not use high voltage products around this product. (ex. Electrical swatter) This product may malfunction due to electrical shock.

CAUTION: Do not block any ventilation openings. Install in accordance with the manufacturer's instructions.

Slots and openings in the cabinet are provided for ventilation and to ensure reliable operation of the product and to protect it from over heating. The openings shall be never be blocked by placing the product on a bed, sofa, rug or other similar surface. This product shall not be placed in a built-in installation such as a bookcase or rack unless proper ventilation is provided or the manufacturer's instruction has been adhered to.



CAUTION: This product employs a Laser System. To ensure proper use of this product, please read this owner's manual carefully and retain it for future reference. Shall the unit require maintenance, contact an authorized service center.

Use of controls, adjustments or the performance of procedures other than those specified herein may result in hazardous radiation exposure.

To prevent direct exposure to laser beam, do not try to open the enclosure.

CAUTION concerning the Power Cord

The Power Plug is the disconnecting device. In case of an emergency, the Power Plug must remain readily accessible.

CAUTION: The apparatus shall not be exposed to water (dripping or splashing) and no objects filled with liquids, such as vases, shall be placed on the apparatus.

This device is equipped with a portable battery or accumulator.

Safety way to remove the battery or the battery from the equipment: Remove the old battery or battery pack, follow the steps in reverse order than the assembly. To prevent contamination of the environment and bring on possible threat to human and animal health, the old battery or the battery put it in the appropriate container at designated collection points. Do not dispose of batteries or battery together with other waste. It is recommended that you use local, free reimbursement systems batteries and accumulators. The battery shall not be exposed to excessive heat such as sunshine, fire or the like.

NOTICE: For safety marking information including product identification and supply ratings, please refer to the main label on the bottom or the other surface of the product.

CAUTION: No naked flame sources, such as lighted candles, should be placed on the apparatus.

- The appliance is not intended for use by young children or infirm persons without supervision.
- Young Children should be supervised to ensure that they do not play with appliance.
- If the appliance is supplied from a cord extension set or an electrical portable outlet device, the cord extension set on electrical portable outlet device must be positioned so that it is not subject to splashing (of water or any form of liquid) or ingress of moisture.

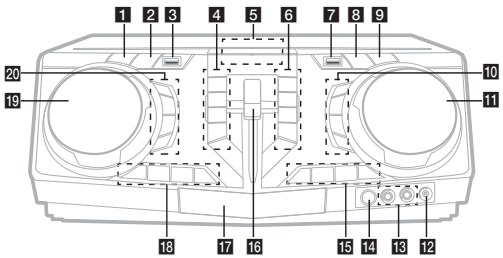
RF Radiation Exposure Statement

This equipment should be installed and operated with minimum distance 20 cm between the radiator and your body.





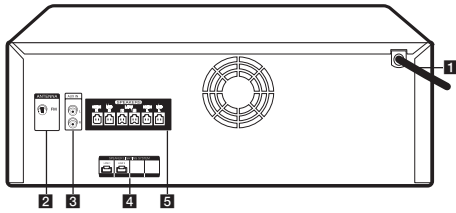
Front Panel



- 1** (Standby)
Turns the power on or off.
- 2** **USB REC / DEMO**
- Records to USB.
- In power off status, if you press **USB REC / DEMO**, show DEMO mode.
- 3** **USB 1 Port**
You can play sound files by connecting the USB device.
- 4** **PARTY THRUSTER MODE**
Selects PARTY THRUSTER mode.
 (Stop)
Stops playback or cancels DELETE function.
I<< (Skip/Search)
- Skips backward.
- Searches for a section within a track/file.
- Selects the radio stations.
△ (Open/Close)
Opens and closes the disc tray.
- 5** Display window
- 6** **DJ LOOP**
Selects DJ LOOP mode.
(DJ LOOP mode can use during CD/USB playback.)
>|| (Play/Pause)
- Starts or pauses playback.
- Selects stereo/mono.
>>>I (Skip/Search)
- Skips forward.
- Searches for a section within a track/file.
- Selects the radio stations.
REGION EQ / BASS BLAST
- Chooses region equalizer.
- Press and hold to select BASS effect directly.
- 7** **USB 2 Port**
You can play sound files by connecting the USB device.
- 8** **F (Function)**
Selects the function and input source.
- 9** **WIRELESS LINK**
- Selects MASTER or SLAVE on WIRELESS PARTY LINK mode.
- Enable or disable WIRELESS PARTY LINK mode.

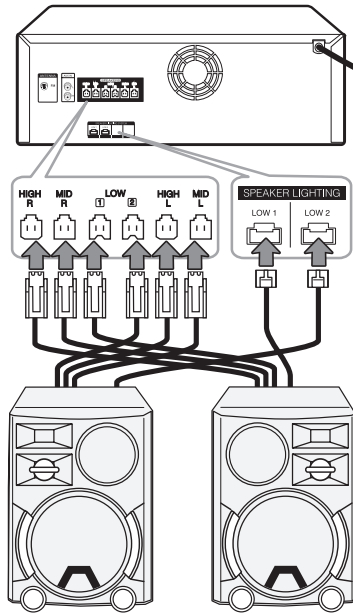
- 10** **LIGHTING**
Turns on/off the lighting effects.
VOCAL EFFECTS
Selects VOCAL EFFECTS mode.
VOICE CANCELLER
You can enjoy the function while playing the music, by reducing singer vocal of music in the various source.
ECHO
Selects ECHO mode.
- 11** **MASTER VOLUME / MULTI JOG**
- Adjust speaker volume.
- Selects lighting mode and vocal effects mode.
- 12** **PORT.** (Portable) **IN** jack
- 13** **MIC** (Microphone) **1/2** jack
- 14** (Remote sensor)
- 15** **KEY CHANGER (# / b)**
Changes the key to suit your vocal range.
MIC (Microphone) **+/-**
Adjust microphone volume.
- 16** **PARTY THRUSTER** lever
Slide up the lever to create a party atmosphere.
- 17** Disc tray
- 18** **CLUB, DRUM, USER** (DJ PRO)
Selects CLUB, DRUM or USER sound effect to mix.
(If you want to use USER, you have to register a source with "Music Flow Bluetooth" app.)
1, 2, 3, 4 (DJ PRO PAD)
Press a desired sound pad.
- 19** **SCRATCH / SEARCH & LEVEL CONTROL**
- Turns clockwise or counterclockwise to make scratch sound.
- Turns clockwise or counterclockwise to control the USER EQ level.
- Searches a folder or a file.
- Adjust DJ EFFECT level.
- 20** **DJ EFFECT**
Selects a desired DJ EFFECT.
USER EQ
Selects the sound effect created by your own.
SEARCH
Moves to folder or file in selection mode.
OK
Selects a folder when searching a file.

Rear Panel



- 1** Power cord
- 2** **ANTENNA** (FM)
- 3** **AUX IN (L/R)**
Connect an auxiliary device.
- 4** **SPEAKER LIGHTING SYSTEM**
Connect the speaker lighting cables.
- 5** **SPEAKERS** connector

Speaker Connection



Controller App



Download the **Music Flow Bluetooth** App to your device. (Android only)

Additional Information

Specifications

Power Requirements	Refer to the main label on the unit.
Power Consumption	Refer to the main label on the unit.
Dimensions (W x H x D)	Approx. 450 mm x 170 mm x 349 mm
Bus Power Supply (USB)	5 V 500 mA
Amplifier (Total RMS output power)	3,500 W RMS

Design and specifications are subject to change without notice.

LG Sound Sync (Wireless)



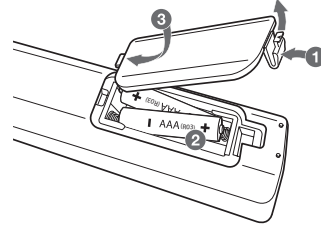
For more information, download the online owner's manual. <http://www.lg.com>

Additional Information

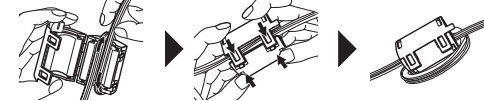
Caution

- When you use the multiple socket, it is advisable to use 15 A socket. 10 A socket may cause power off due to lack of power supply.
- Do not place objects on the speakers. It may cause the objects to fall and make property damage.
- Install the speakers on a firm surface not to slide. The vibration caused by the strong output can shake and move the speakers.
- Avoid turning up max volume in a small enclosed space. The powerful and intense output of the speakers can shake the ceiling and get the objects in the room falling.
- To protect from hearing damage, keep the sufficient distance from the speaker. The overwhelming sound from the speaker may cause a person's hearing damage.
- Allow more than 20 cm of free space between the main set and the speakers when you install the main set on the ground. High sound pressure from the speakers can make the set tremble to disturb the CD playback.
- Connect the power cord to wall outlet directly if possible. Or when you use an extension cable, it is highly recommended to use an extension cable of 110 V / 15 A or 230 V / 15 A, otherwise the unit may not operate properly because of the lack of power supply.
- Do not overload the extension cord with excessive electrical load.

Replacement of battery



About Ferrite Core (Optional)



Wind power cord cable around the ferrite core twice.