



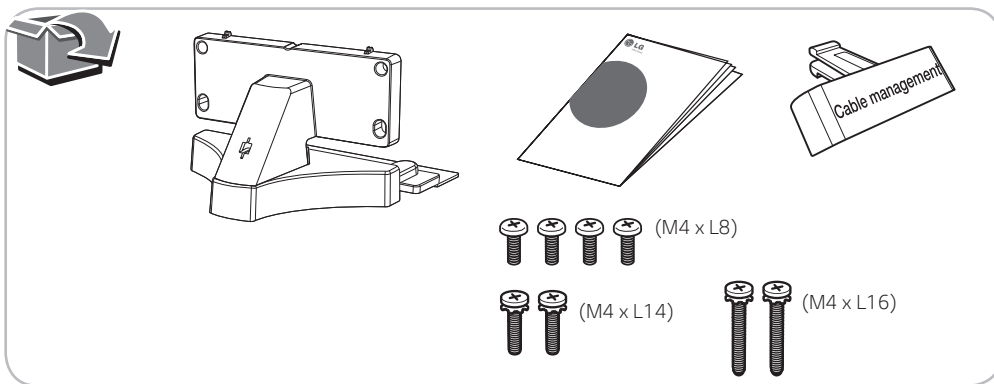
LG TV Stand Installation Guide for Sound Bar (SJ8)

MODEL
T8

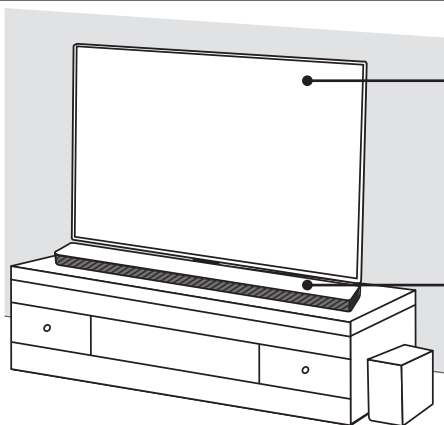


ENGLISH	ČESKY	SLOVENŠČINA
DEUTSCH	SLOVENČINA	SHQIP
FRANÇAIS	POLSKI	BOSANSKI
NEDERLANDS	ROMÂNĂ	SVENSKA
ITALIANO	LATVIEŠU	DANSK
ESPAÑOL	HRVATSKI	NORSK
ΕΛΛΗΝΙΚΑ	SRPSKI	SUOMI
PORTUGUÊS	БЪЛГАРСКИ	
MAGYAR	МАКЕДОНСКИ	

www.lg.com



CHECK



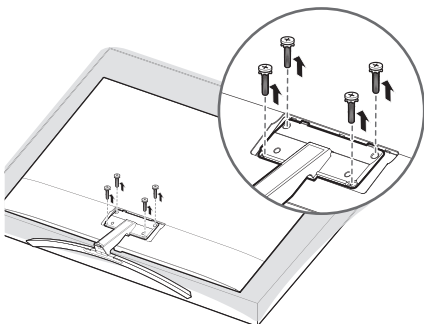
LG TV (Compatible TV models)

- OLED65/S5B7
- OLED65/S5C7

LG Sound Bar
SJ8

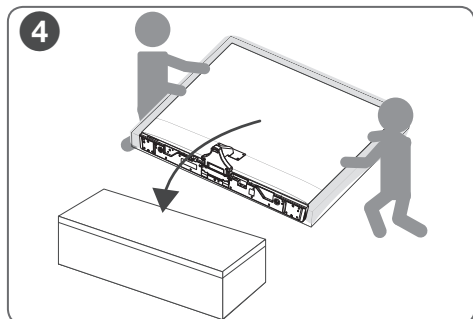
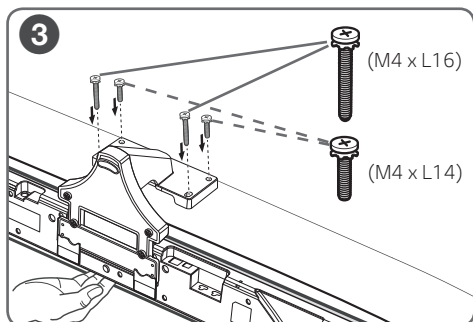
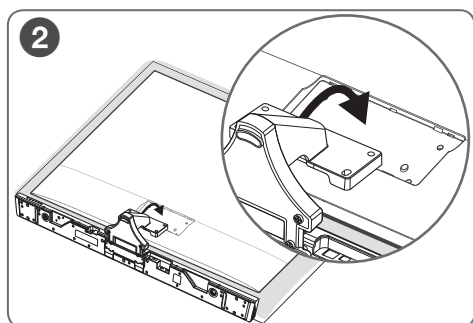
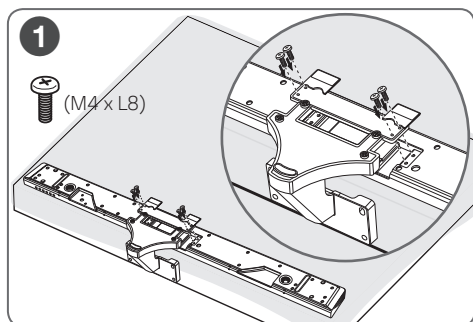


Before installation, you have to detach TV's stand and retain it separately if your TV has been installed with the stand. When you are detaching the stand, please refer to the instruction manual of your TV.

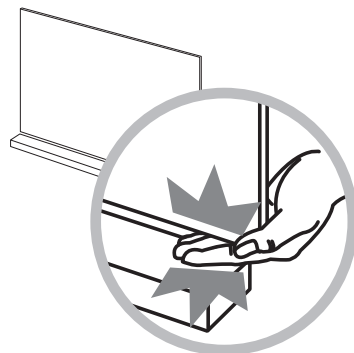


- When detaching or attaching the stand of the TV, place the screen facing down on a cushioned table or flat surface to protect the screen from scratches and damages.
- Make sure that the screws are fastened tightly. (If they are not fastened securely enough, the TV may tilt forward after being installed.)

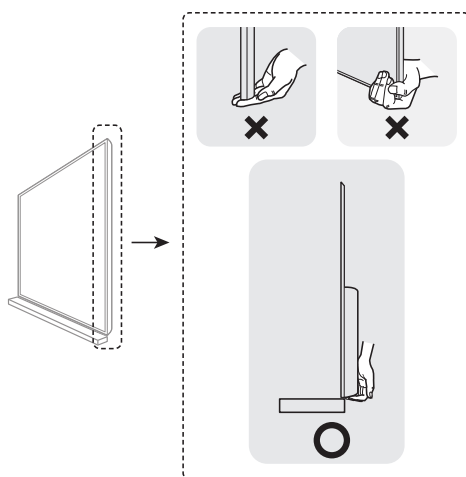
Installation



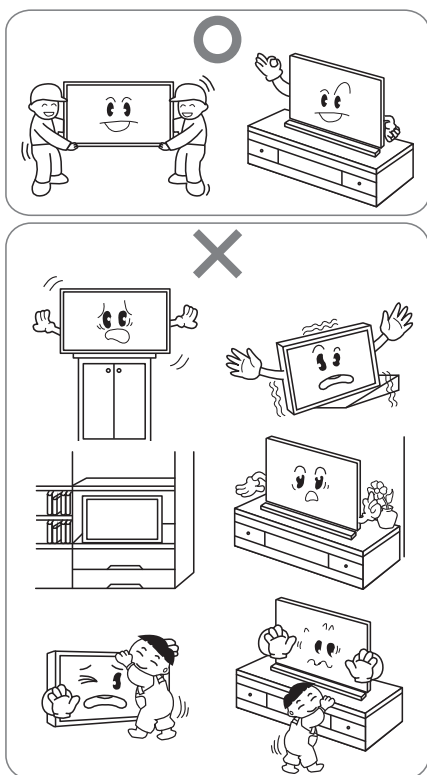
CAUTION for moving a TV



Be careful not to get your fingers caught between the TV and the Sound Bar.

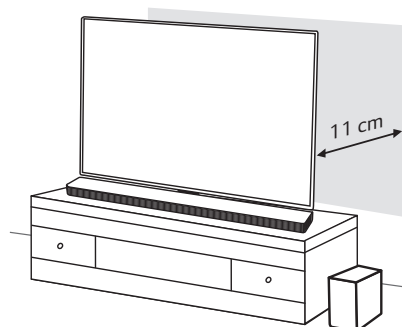


CAUTION



Positioning

For safety installation, there should be enough space between the wall and the installed product.



Cable management

You can arrange the cables behind of your TV by using a supplied cable management clip.

