

SIMPLE MANUAL

# Micro Hi-Fi Audio

To view the instructions of advanced features,  
visit <http://www.lg.com> and then download Owner's Manual.  
Some of the content in this manual may differ from your unit.

MODEL  
CM2760



[www.lg.com](http://www.lg.com)

Copyright © 2017 LG Electronics. All Rights Reserved

ENGLISH

DEUTSCH

FRANÇAIS

NEDERLANDS

SLOVENŠČINA

ITALIANO

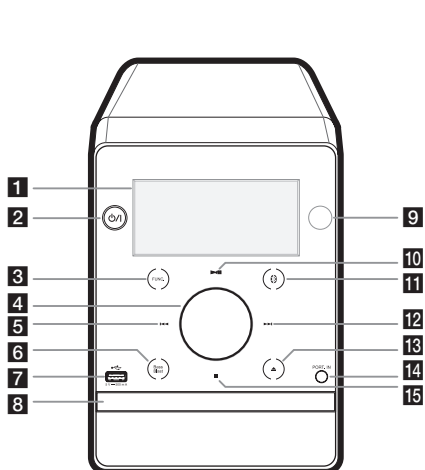
ESPAÑOL

EAHNIKA

PORTUGUÊS

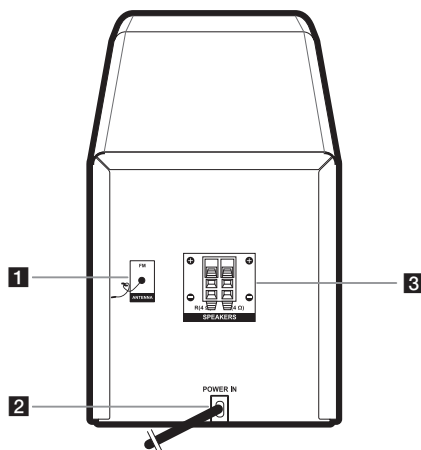


## Front Panel



- 1 Display window
- 2 **Power** : Switches the unit ON or OFF.
- 3 **FUNC.** : Selects the function or input source.
- 4 Adjusts volume of speaker.
- 5 **⏮** (Skip/Search) : Searches backward. / Skips to the previous track/file. / Selects the radio stations.
- 6 **Bass Blast** : Selects BASS effect.
- 7 **USB** : Plays the audio files by connecting the USB device.
- 8 Disc tray
- 9 Remote sensor
- 10 **▶/⏸** (Play/Pause) : Starts or pauses playback. / Selects Stereo/Mono.
- 11 **Bluetooth** : Changes input source to the **Bluetooth**.
- 12 **⏭** (Skip/Search) : Searches forward. / Skips to the next track/file. / Selects the radio stations.
- 13 **⏮** : Opens or closes the disc tray.
- 14 **PORT. IN** : Connects to a Portable device.
- 15 **■** (Stop) : Stops playback.

## Rear Panel



- 1 **FM ANTENNA**
- 2 **POWER IN**
- 3 **SPEAKERS (L/R)** terminals

### Controller App



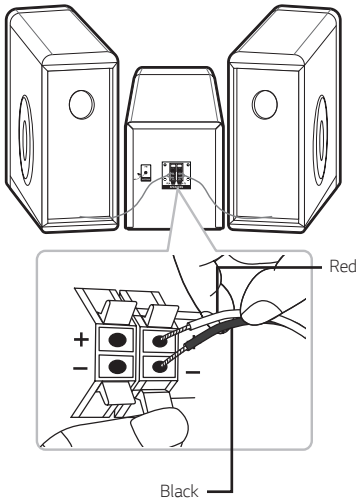
Download the **Music Flow Bluetooth** App to your device.

### LG Sound Sync (Wireless)



For more information, download the online owner's manual. <http://www.lg.com>

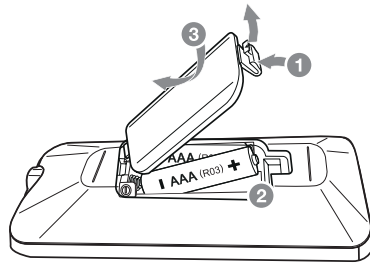
## Speaker Connection



## How to disconnect the wireless network connection or the wireless device


Turn off the unit by pressing the power button for more than 5 seconds.

## Replacement of battery



## Additional Information

### Specifications

Power Requirements	Refer to the main label on the unit.
	Refer to the main label on the unit.
Power Consumption	Networked standby : 0.5 W (If all network ports are activated.)
Dimensions (W x H x D)	Approx. 170 mm x 230 mm x 276 mm
Net Weight	Approx. 2.2 kg
Bus Power Supply (USB)	5 V  500 mA
Amplifier (Total RMS output power)	160 W

Design and specifications are subject to change without notice.

## Declaration of Conformity



Hereby, LG Electronics declares that the radio equipment type MICRO HI-FI SYSTEM is in compliance with Directive 2014/53/EU. The full text of the EU declaration of conformity is available at the following internet address:

<http://www.lg.com/global/support/cedoc/cedoc#>

For consideration of the user, this device should be installed and operated with a minimum distance of 20 cm between the device and the body.

Frequency range	Output power (Max.)
2402 to 2480 MHz	10 dBm

