

SIMPLE MANUAL

HIGH POWER SPEAKER SYSTEM

To view the instructions of advanced features,
visit <http://www.lg.com> and then download Owner's Manual.
Some of the content in this manual may differ from your unit.

MODEL
FH2



www.lg.com

Copyright © 2016-2019 LG Electronics Inc. All Rights Reserved.

ENGLISH



CAUTION: TO REDUCE THE RISK OF ELECTRIC SHOCK
DO NOT REMOVE COVER (OR BACK) NO
USER-SERVICEABLE PARTS INSIDE REFER SERVICING TO
QUALIFIED SERVICE PERSONNEL.



This lightning flash with arrowhead
symbol within an equilateral triangle is
intended to alert the user to the presence
of uninsulated dangerous voltage within
the product's enclosure that may be of
sufficient magnitude to constitute a risk
of electric shock to persons.



The exclamation point within an equilateral
triangle is intended to alert the user to
the presence of important operating and
maintenance (servicing) instructions in the
literature accompanying the product.

WARNING: TO PREVENT FIRE OR ELECTRIC SHOCK
HAZARD, DO NOT EXPOSE THIS PRODUCT TO RAIN OR
MOISTURE.

WARNING: Do not install this equipment in a confined
space such as a book case or similar unit.

CAUTION: Do not use high voltage products around
this product. (ex. Electrical swatter) This product may
malfunction due to electrical shock.

CAUTION: Do not block any ventilation openings. Install
in accordance with the manufacturer's instructions.
Slots and openings in the cabinet are provided for
ventilation and to ensure reliable operation of the product
and to protect it from over heating. The openings should
never be blocked by placing the product on a bed, sofa,
rug or other similar surface. This product shall not be
placed in a built-in installation such as a bookcase or rack
unless proper ventilation is provided or the manufacturer's
instruction has been adhered to.

CAUTION concerning the Power Cord
The Power Plug is the disconnecting device. In case of an
emergency, the Power Plug must remain readily accessible.

CAUTION: The apparatus should not be exposed to water
(dripping or splashing) and no objects filled with liquids,
such as vases, should be placed on the apparatus.

NOTICE: For safety marking information including
product identification and supply ratings, please refer to
the main label on the bottom or the other surface of the
product.

This device is equipped with a portable battery or
accumulator.

**Safety way to remove the battery or the battery
from the equipment:** Remove the old battery or battery
pack, follow the steps in reverse order than the assembly.
To prevent contamination of the environment and
bring on possible threat to human and animal health,
the old battery or the battery put it in the appropriate
container at designated collection points. Do not dispose
of batteries or battery together with other waste. It is
recommended that you use local, free reimbursement
systems batteries and accumulators. The battery shall not
be exposed to excessive heat such as sunshine, fire or the
like.

CAUTION: No naked flame sources, such as lighted
candles, should be placed on the apparatus.

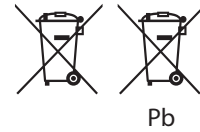
Disposal of your old appliance



1. This crossed-out wheeled bin symbol indicates that
waste electrical and electronic products (WEEE) should
be disposed of separately from the municipal waste
stream.
2. Old electrical products can contain hazardous
substances so correct disposal of your old appliance
will help prevent potential negative consequences for
the environment and human health. Your old appliance
may contain reusable parts that could be used to repair
other products, and other valuable materials that can be
recycled to conserve limited resources.

3. You can take your appliance either to the shop where
you purchased the product, or contact your local
government waste office for details of your nearest
authorised WEEE collection point. For the most up to
date information for your country please see
www.lg.com/global/recycling

Disposal of waste batteries/accumulators



1. This symbol may be combined with chemical symbols
for mercury (Hg), cadmium (Cd) or lead (Pb) if the
battery contains more than 0.0005% of mercury,
0.002% of cadmium or 0.004% of lead.
2. All batteries/accumulators should be disposed
separately from the municipal waste stream via
designated collection facilities appointed by the
government or the local authorities.
3. The correct disposal of your old batteries/accumulators
will help to prevent potential negative consequences for
the environment, animal and human health.
4. For more detailed information about disposal of your
old batteries/ accumulators, please contact your city
office, waste disposal service or the shop where you
purchased the product. ([http://www.lg.com/global/
sustainability/environment/take-back-recycling/global-
network-europe](http://www.lg.com/global/sustainability/environment/take-back-recycling/global-network-europe))

Declaration of Conformity



Hereby, LG Electronics declares that the radio equipment type
HIGH POWER SPEAKER SYSTEM is in compliance with Directive
2014/53/EU. The full text of the EU declaration of conformity is
available at the following internet address:

<http://www.lg.com/global/support/cedoc/cedoc#>

For consideration of the user, this device should be installed and
operated with a minimum distance of 20 cm between the device
and the body.

Frequency range	Output power (Max.)
2402 to 2480 MHz	10 dBm

Removal of waste batteries and accumulators

(Product with embedded battery ONLY)

In case this product contains a battery incorporated within
the product which cannot be readily removed by endusers, LG
recommends that only qualified professionals remove the battery,
either for replacement or for recycling at the end of this product's
working life. To prevent damage to the product, and for their
own safety, users should not attempt to remove the battery and
should contact LG Service Helpline, or other independent service
providers for advice.

Removal of the battery will involve dismantling of the product
case, disconnection of the electrical cables/contacts, and careful
extraction of the battery cell using specialized tools. If you need
the instructions for qualified professionals on how to remove
the battery safely, please visit [http://www.lge.com/global/
sustainability/environment/take-back-recycling](http://www.lge.com/global/sustainability/environment/take-back-recycling).



Technology with the human touch GUARANTEE

- LG Electronics U.K. Ltd. will provide the following services in order to expedite this Guarantee.
- 1. All faulty components which fail due to defective manufacture will be replaced free of charge for a period of 12 months from the original date of purchase.
- 2. The dealer (or his service agent) who sold the product will be reimbursed for any labour provided in the repair of this LG equipment, for a period of 12 months from the original date of purchase. These claims must be made in accordance with the published scale of service charges and relevant claims procedure.

PLEASE NOTE:

- A. The dealer may restrict the guarantee to the original purchaser.
- B. The dealer is not obliged to carry out service under guarantee if unauthorized modifications are made to the apparatus, or if non standard components are used or if the serial number of the apparatus is removed, defaced, misused, or altered.
- C. Any claims made under guarantee must be directed to the dealer from whom the equipment was originally purchased. The dealer may, before carrying out service under guarantee, require a receipted account as evidence of the date of purchase.
- D. We respectfully point out that your dealer is not obligated to replace batteries if they become exhausted or worn in use.
- E. Aerial alignment and consumer control adjustments are not covered by this guarantee.

This guarantee does not affect your statutory rights.

- REQUIREMENTS TO MAINTAIN WARRANTY COVERAGE:
RETAIN YOUR RECEIPT TO PROVE DATE OF PURCHASE. A COPY OF YOUR RECEIPT MUST BE SURRENDERED AT THE TIME
GUARANTEE SERVICE IS PROVIDED.
- Product Registration Card :
It is helpful to complete at least your name, address, phone, model & serial numbers and return it. This will enable LG to
assist you in the future should you lose your receipt, your units be stolen, or should modifications be necessary.
- To obtain information or assistance:
Call UK: 0344 847 5454 IE: 01 686 9454

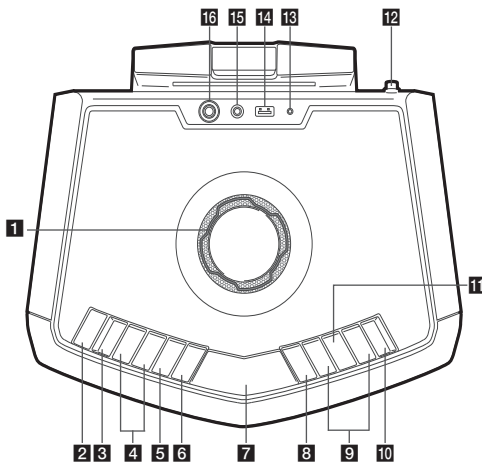
MODEL NO.*	SERIAL NO.*	DATE OF PURCHASE.*

In all cases of difficulty - consult your LG dealer from whom the product was purchased

LGUK Website : www.lg.com/uk
(Service website : www.lg.com/uk/support)



Top Panel



- 1

MASTER VOLUME
Adjusts speaker or microphone volume.
- 2

⏻/I (Standby/On)
Switches the unit ON or OFF.
- 3

MIC (Microphone)
Press to select a microphone's volume control mode.
- 4

⏮/⏭ (KEY CHANGER)
Changes the key to suit your vocal range.
- 5

VOICE CANCELLER
You can enjoy the function while playing the music, by reducing singer vocal of music in the various source.
- 6

SOUND EFFECT/BASS BLAST
- Chooses sound impressions.
- Press and hold to select BASS effect directly.
- 7

Display window
- 8

F (Function)
Selects the function and input source.
- 9

I<</>>I
- Skips Fast backward or Forward. /
- Searches for a section within a file by pressing and holding.
- Selects the radio stations.
- 10

PRESET/REPEAT
- Chooses a preset number for a radio station. /
- Stores radio stations by pressing and holding.
- Listens to your files repeatedly or randomly.
- Sees the name of connected all Bluetooth device in Bluetooth mode.
- 11

>II
Starts or pauses playback.
- 12

FM antenna
- 13

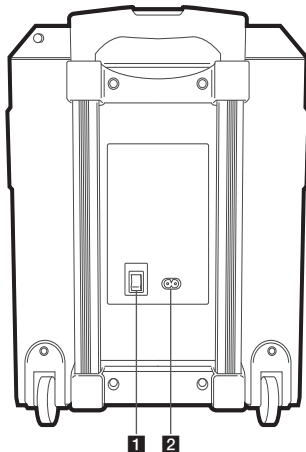
CHARGING
Battery charging indicator
- 14

USB port
You can play sound files by connecting the USB device.
- 15

PORT.IN
Connects a portable device.
- 16

MIC (Microphone)
Connects a microphone.

Rear Panel



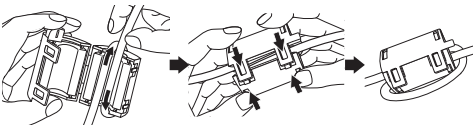
- 1

Power ON/OFF switch
Switches the unit ON or OFF.
(Battery can be charged even when this unit is in off (OFF) status.)
- 2

AC in socket

About Ferrite Core (Optional)

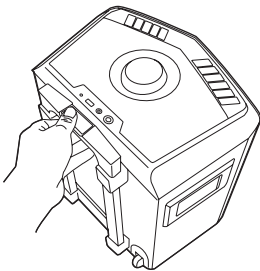
Wind the power cord around the ferrite core once.



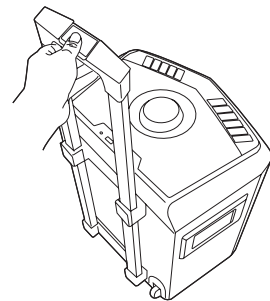
Carrying the unit

The unit has wheels and a handle so you can easily move the unit.

1. Press the lock button on the handle.



2. Pull the handle up.



3. Release the lock button to lock the handle in place.

!

Note

To retract the handle, press the button and push down.

Additional Information

Specifications

General	
Power Requirements	Refer to the main label on the unit.
Power Consumption	Refer to the main label on the unit.
Dimensions (W x H x D)	Approx. 352.5 mm x 419.6 mm x 269.2 mm
Net Weight	Approx. 9.71 kg
Operating temperature	5 °C to 45 °C
Operating humidity	5 % to 60 %
Maximum operating altitude	2000 m
Bus Power Supply (USB)	5 V 500 mA
Amplifier (Total RMS output power)	50 W

Battery	
Battery type	12 V/7.0 Ah (Valve Regulated Lead-Acid rechargeable battery)
Operating time	Approx. 15 hours (Based on fully charging the battery and continuous playback using 50 % volume level.) It may vary depending on the battery status and operational conditions.
Charging time	Approx. 9 hours It may vary depending on the battery status and operational conditions.

Design and specifications are subject to change without notice.

Precautions on handling a battery

- This unit has a built-in valve regulated lead-acid rechargeable battery. (12 V/7.0 Ah)
- Do not use the battery in a closed room or near fire.
- Charge the battery under the charging condition specified.
- If any corrosion of the terminals, leakage or deformation of the case of the battery is found, do not use the battery.
- If the battery leaks, while protecting your hands or clothing, remove the battery from the device and should be extremely careful not to infect the skin or eyes.
- If the battery leaks and the liquid inside spills on the skin or clothing, immediately wash it off with plenty of clean water. If the liquid splashes into eyes, immediately flush the eyes with plenty of clean water and consult a doctor.
- Avoid mixed usage of batteries differing in type, manufacturer or history of use.
- Do not throw the battery in fire nor heat the battery.
- Do not short of battery terminals.
- Do not attempt to disassemble, remodel or destroy the battery.
- Do not place the battery near a child.
- The battery can be replaced. If you need to charge your battery more and more frequently, it might be time to replace it. The battery should be serviced by LG Electronics customer care center.
- Charge fully before storing a battery which has not been in use for a long period and turn ON/OFF switch off (OFF). Store the battery in a cool, dry place.
- During storage of the battery, charge it at least once every one month. If the battery is stored for a long period without being charged, its battery life may be shortened.
- The used battery must be recycled or disposed of separately from household waste.

The AUTO POWER On function can be set only when the unit is connected to an AC outlet. When the unit is being powered by the built-in battery only, the AUTO POWER On function is not available.

POWER: This unit operates on a mains supply of 100 - 240 V ~ 50 / 60 Hz.

Wiring: This unit is supplied with a BS 1363 approved main plug. When replacing the fuse, always use a fuse of the same rating and approved to BS 1362. Never use this plug with the fuse cover omitted. To obtain a replacement fuse cover contact your dealer. If the type of plug supplied is not suitable for the mains sockets in your home, then the plug should be removed and a suitable type fitted. Please refer to the wiring instructions below.

Warning: A mains plug removed from the mains lead of this unit must be destroyed. A mains plug with bared wires is hazardous if inserted in a mains socket. Do not connect either wire to the earth pin, marked with the letter E or with the earth symbol or coloured green or green and yellow. If any other plug is fitted, use same rating of fuse in the plug.

Important: The wires in this mains lead are coloured in accordance with the following codes:

- **BLUE: NEUTRAL, BROWN: LIVE** - As the colours of the wires in the mains lead of this unit may not correspond with the coloured marking identifying the terminals in your plug, proceed as follows: The wire which is coloured blue must be connected to the terminal which is marked with the letter N or coloured black. The wire which is coloured brown must be connected to the terminal which is marked with the letter L or coloured red.

