

SIMPLE MANUAL

Wireless Sound Bar

To view the instructions of advanced features,
visit <http://www.lg.com> and then download Owner's Manual.
Some of the content in this manual may differ from your unit.

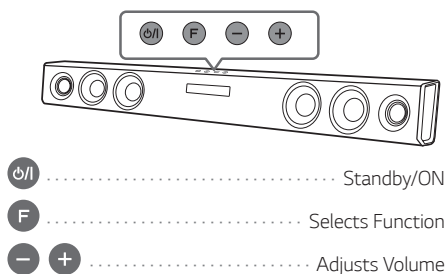
MODEL
SH3B



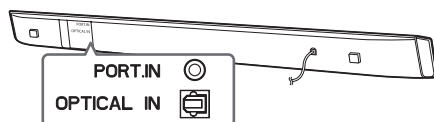
www.lg.com



Front Panel



Rear Panel



1

Subwoofer Connection

Place the wireless subwoofer near the sound bar and follow steps below.

- 1 Connect the power cord of wireless subwoofer to the outlet.
- 2 Turn on the sound bar :
The sound bar and wireless subwoofer will be **automatically** connected. The subwoofer's yellow - green LED turns on.

Subwoofer Connection Manually

- 1 Reset the subwoofer
If the yellow - green LED on the subwoofer blinks quickly, skip this step and go to 2
 - Press and hold **PAIRING** button for 5 seconds.
 - The LED lights up alternately in red and yellow - green.
 - Plug out the power cord. After the LED turns off completely, plug in the power cord again.

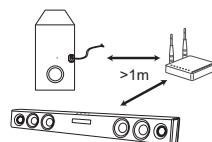
When the reset is completed, the subwoofer's yellow - green LED blinks quickly.

- 2 Reset the sound bar
 - Adjust volume to minimum until the red LED on the sound bar lights up for a while.
 - Press and hold **Mute** button on the remote control for 3 seconds.
 - The red LED on the sound bar blinks quickly.
 - Turn the sound bar's power off and on while the subwoofer's yellow - green LED blinks.

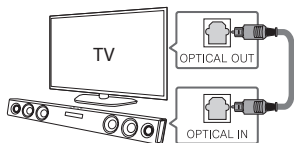
When the connection is completed, you can see the yellow - green LED on the subwoofer.



Keep the sound bar and the subwoofer away from the device (ex. wireless router, microwave oven, etc.) over 1m to prevent wireless interference.

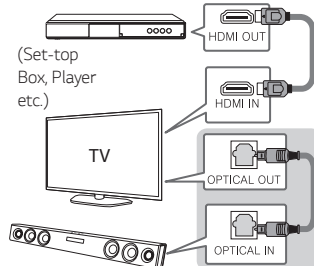


- 1 Connect the sound bar to the TV using Optical cable.
- 2 Set up [External Speaker (Optical)] on your TV setting menu.

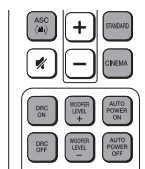


Additional Device Connection

- 1 Connect to the external device as follows.



- 2 Set the input source by pressing F on the remote control or unit repeatedly.



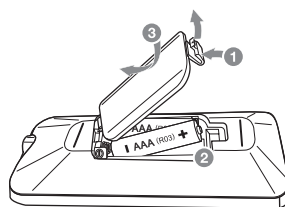
ASC/STANDARD/CINEMA : Selects sound effect.

DRC ON/OFF : Makes comfortable sound at Dolby Digital.

WOOFER LEVEL+/- : Adjusts the volume level of subwoofer.

AUTO POWER ON/OFF : Automatically turns on by an input source.

Replacement of battery



Additional Information

Specification

Power requirements	Refer to the main label.
	Refer to the main label.
Power consumption	Networked standby : 0.5 W (If all network ports are activated.)
Dimensions (W x H x D)	Approx. 950 mm x 71 mm x 47 mm
Net Weight	Approx. 2.47 kg
Amplifier (Total RMS Output power)	300 W

Design and specifications are subject to change without notice.

How to disconnect the wireless network connection or the wireless device

Set up the AUTO POWER ON/OFF function to off and turn off the unit.

