

ENGLISH

Specification

Power requirements

- Refer to the main label.

Power consumption

- Refer to the main label.

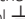
Dimensions (W x H x D): Approx. 300 mm x 390 mm x 320 mm

Bus Power Supply (USB): 5 V  500 mA

- This unit contains magnets which can be harmful to some kind of object (Ex: Magnetic card, Pacemaker etc.).
- Do not leave the unit on an unstable place such as high shelves. It may fall down because of the vibration of the sound.

POWER: This unit operates on a mains supply of 200 - 240 V ~ 50 / 60 Hz

Wiring: This unit is supplied with a BS 1363 approved main plug. When replacing the fuse, always use a fuse of the same rating and approved to BS 1362. Never use this plug with the fuse cover omitted. To obtain a replacement fuse cover contact your dealer. If the type of plug supplied is not suitable for the mains sockets in your home, then the plug should be removed and a suitable type fitted. Please refer to the wiring instructions below.

Warning: A mains plug removed from the mains lead of this unit must be destroyed. A mains plug with bared wires is hazardous if inserted in a mains socket. Do not connect either wire to the earth pin, marked with the letter E or with the earth symbol  or coloured green or green and yellow. If any other plug is fitted, use same rating of fuse in the plug.

Important: The wires in this mains lead are coloured in accordance with the following codes:

- **BLUE: NEUTRAL, BROWN: LIVE** - As the colours of the wires in the mains lead of this unit may not correspond with the coloured marking identifying the terminals in your plug, proceed as follows: The wire which is coloured blue must be connected to the terminal which is marked with the letter N or coloured black. The wire which is coloured brown must be connected to the terminal which is marked with the letter L or coloured red.



SIMPLE MANUAL

HIGH POWER SPEAKER SYSTEM

XL2S



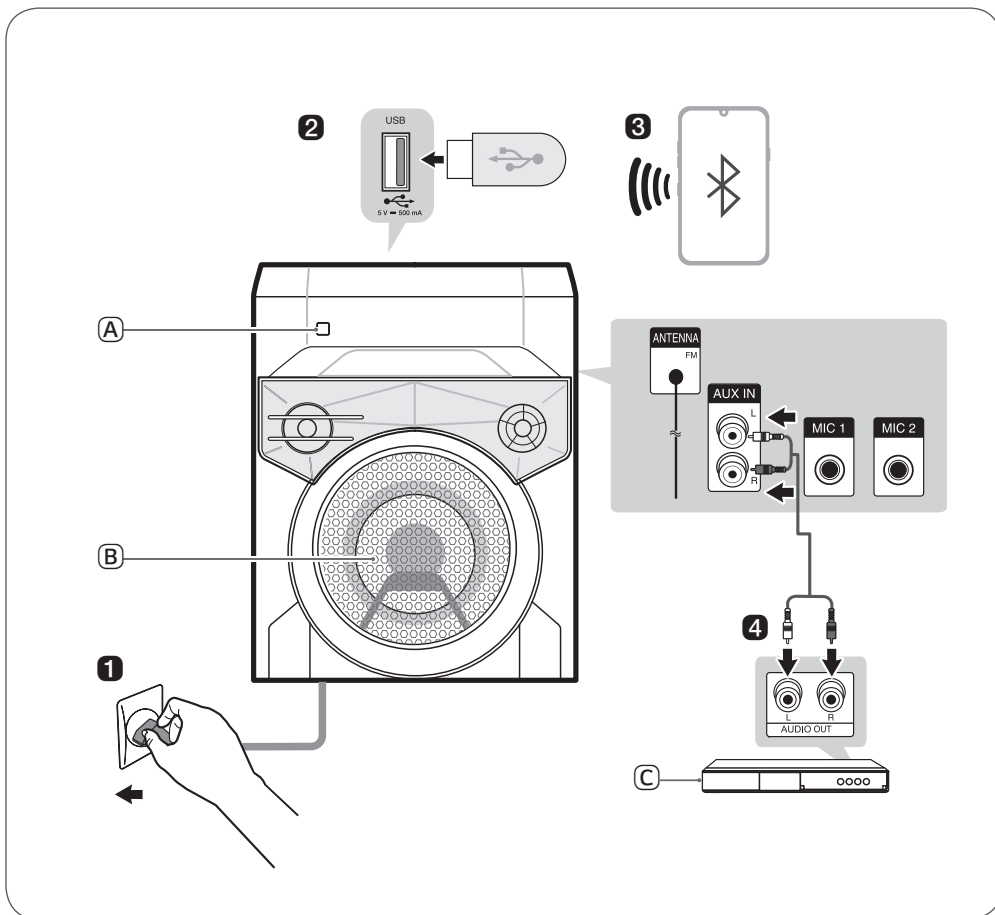
COV37343802
2301_Rev01

www.lg.com
Copyright © 2023 LG Electronics Inc. All Rights Reserved.



ENGLISH Installing and Using the Product

Please read this manual carefully before operating your set and retain it for future reference. To view the instructions of advanced features, visit <http://www.lg.com> or scan QR code and then download Owner's Manual. Some of the content in this manual may differ from your product.



- (A) Remote sensor
- (B) Woofer lighting
- (C) External Device - (Blu-ray player, game console, etc.)

1 Plug the power cord before use.

2 Playing Music from the USB

- 1 Plug the USB storage device into the USB terminal.
- 2 Press the **Power** (⏻) button to turn on the product.
- 3 Press the **Function** (⏮) button repeatedly until "USB" appears on the status display.
- 4 Press the **Play/Pause** (⏮) button to enjoy the music.

3 Connecting the Speaker to a Smartphone Using Bluetooth

- 1 Press the **Power** (⏻) button to turn on the product.
- 2 Press the **Function** (⏮) button repeatedly to select the BT function. After a moment, you will see "READY" on the status display.
- 3 Tap the **Settings** (⚙️) button on your smartphone and select **Bluetooth**. Turn on the **Bluetooth** function.
(Off > On)
- 4 From the list of smartphone devices, find and tap on "LG-XL2S."
- 5 Once the smartphone is connected to the product via **Bluetooth**, you can see the status display change from "PAIRED" → "BT". Play a desired track in the music app on your smartphone.

4 Connecting to an External Device

- 1 Connect the external device to the **AUX IN** (L/R) terminal of the product.
- 2 Press the **Power** (⏻) button to turn on the product.
- 3 Press the **Function** (⏮) button repeatedly until "AUX" appears on the status display. If you play music on the connected external device, you can start listening on this product.

- Design and specifications are subject to change without notice.

Replacement of Battery

