



LG Pra.L Galvanic Ion Booster

Model name
BBL1



MBM67016555

1906_Rev01

Cleansing Mode (CLEANSING)

How to use



Use unit once per day



Use water-soluble
products such as
moisturizing gel



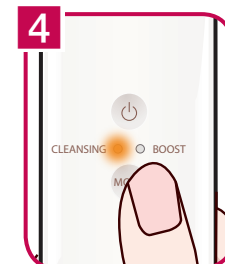
Remove makeup and
wash the face.



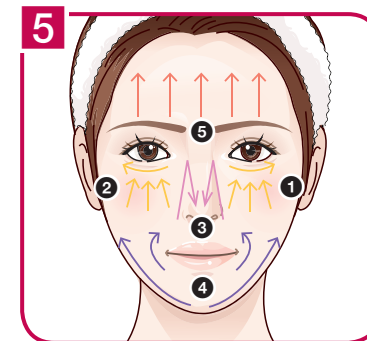
Apply moisturizing gel.



Press the (Power)
button to turn on product.



Press the MODE
button and select the
CLEANSING Mode.



According to the Voice Assistance
function, cleanse each area of the
face in the order in the direction of
an arrow.

- ➔ ➊ Left cheek (30 seconds)
- ➔ ➋ Right cheek (30 seconds)
- ➔ ➌ Nose (45 seconds)
- ➔ ➍ Chin (30 seconds)
- ➔ ➎ Forehead (45 seconds)



Rinse your face
sufficiently with tepid
water after cleansing.

Absorption Promotion Mode (BOOST)

How to use



Use unit once per day



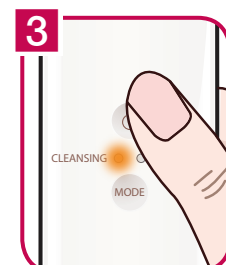
Use previously
used cosmetics or
cosmetics for your
skin type



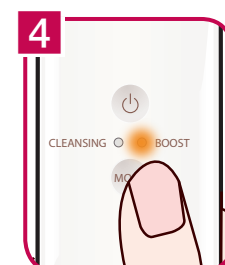
Remove makeup and
wash the face.



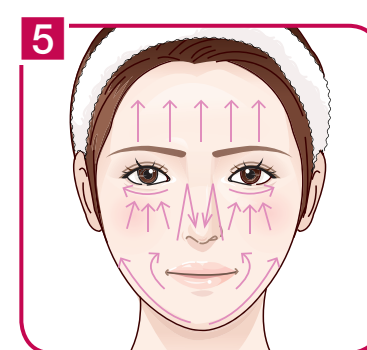
Apply cosmetics (eg,
Vitamin C Serum).



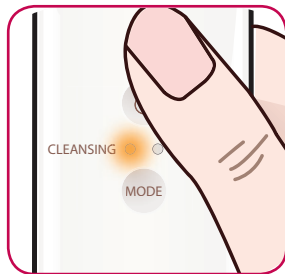
Press the (Power)
button to turn on.



Press the MODE button
and select the BOOST
(absorption promotion)
Mode.



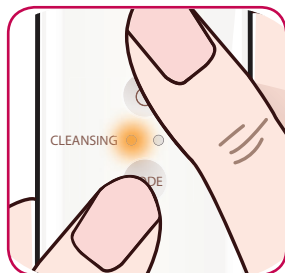
Apply to desired area for
3 minutes moving in the direction
of pictured arrows.



Voice Assistance Setting

With power on, press and hold the ⏻ (Power) button for about 5 seconds to cycle through each mode:

(Voice Assistance → Sound effect guide → Turn off guide (mute))



Language Setting

With power on, press and hold both ⏻ (Power) button and the MODE button simultaneously for 3 seconds to cycle through each language: (English → Vietnamese → Korean)

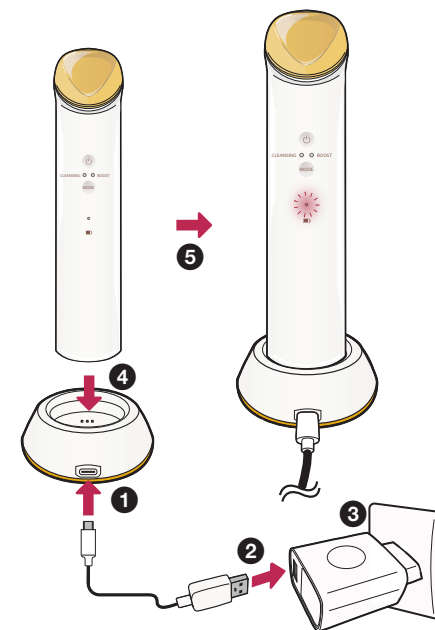
Mode Selection (CLEANSING / BOOST)



Press the MODE button for a short while.
(CLEANSING → BOOST)

- **Cleansing Mode (CLEANSING):**
To make your skin cleaner, it is effective to use this mode before using Absorption Promotion Mode.
Main functions: Warm, Ion (+)
- **Absorption Promotion Mode (BOOST):**
The complex function of the mode helps the penetration of active substances contained in cosmetics.
Main functions: Warm, Ion (-), Ultrasonic wave

Charging



Precautions for use

- Depending on individual skin condition, the device may cause a variety of skin irritations.
If such irritation persists, please reduce the number of uses.
- In the following cases, it is recommended to use the device after consultation with a specialist.
 - Skin Allergies, acne, dermatitis, undergoing skin treatment or cosmetic surgery or hair loss surgery
 - Wearing a cardiac pacemaker, implant device or a metal prosthetic
- Device to be used as a facial treatments only, it is not recommended for use on body.
- Recommend product use is once a day by mode. Using more than twice a day may cause a burning sensation on skin.
- Before using the device, if you are currently undergoing dermatology related treatment or have skin problems, consult your dermatologist and then use it.
- Device use not recommended for pregnant, menstruating or lactating women. (Unstable hormonal balance may cause temporary skin issues.)
- Do not use the device for purposes other than those set out in this guide.
- Please pay attention to using cosmetics that contain the following ingredients as it may reduce the effect: denatured alcohol, sunscreen, retinol, oil