

premium ez DIGITAL



net Album Memo Diary agem



LG

**internet
DIGITAL**



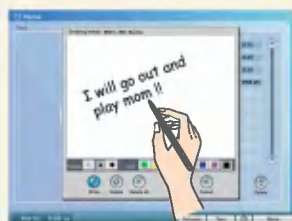
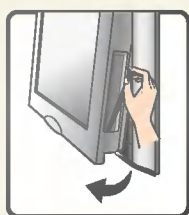
Cautions Before Using Touch-Screen

When Using the Touch-Screen...

- Don't scratch the screen with a knife, pick or any sort of sharp tool. It can give a serious damage to the screen.

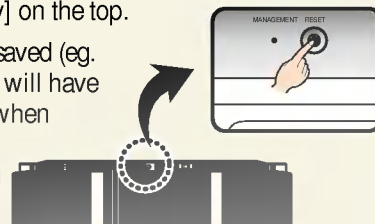


- When writing, use the touch-screen pan. The texts will appear more clear.



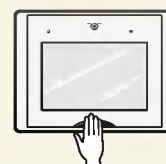
Screen Program Re-Operating Function.

- If screen program doesn't operate properly, open the refrigerator door and touch the [Reset Key] on the top.
- Contents saved (eg. Schedule) will have no effect when re-starting the screen program.



When Closing the Screen

- In case of pulling the screen out, you must push the frame of screen with the hands in the front of it if desiring to close the screen properly after using it.
- It may result in danger of damage if catching and pushing the bottom handle of the screen.



Power Saving Function

- If setting time, the screen will be off in the inactivation status for the setting time and change to the power saving mode.
- In order to return to the Main, touch the screen in off-mode.



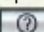
Screen Protection Function

- The screen turns off if not touching the screen for the setting time in the main screen mode.
- If selecting pictures as the screen saver pictures consecutively appear
- Screen will return to Main Display when it is touched.

Checking the Back Light

If you want to save any sort of images in the screen lens, make sure to check the back light before saving. Images in the pictures or picture memo function may appear clearly when it is saved in back light.



You can see Help for all types of function if Touching the () button from each menu.

Power On/Off Function in Screen



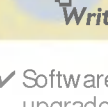
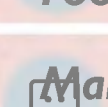
- Open the door of refrigerator and leave the Power switch off when you leave home or does not use the screen for a long time. More power saving can be achieved.
- Power On/Off switch on the digital part is not Power On/Off switch for refrigerator but Power On/Off switch for the screen. Even if turning off this switch, power of the refrigerator does not turn off.

What is Dream LG(<http://www.dreamlg.com>)?

Dream LG is a portal service around home/family that LG Electronics has manufactured to make more convenient for you.

You can easily check memo, schedule, food information stored in the refrigerator when connecting internet outdoors.

could monitor all sorts of information and download programs related with LG internet products such as Internet Air Conditioner, Internet Washing Machine, Internet Microwave oven, etc.



Internet 10~19

Internet 10~19

Internet 10~19

Internet 10~19

Internet 10~19

Internet 10~19

Internet 10~19

Internet 10~19

Internet 10~19

Internet 10~19

Internet 10~19

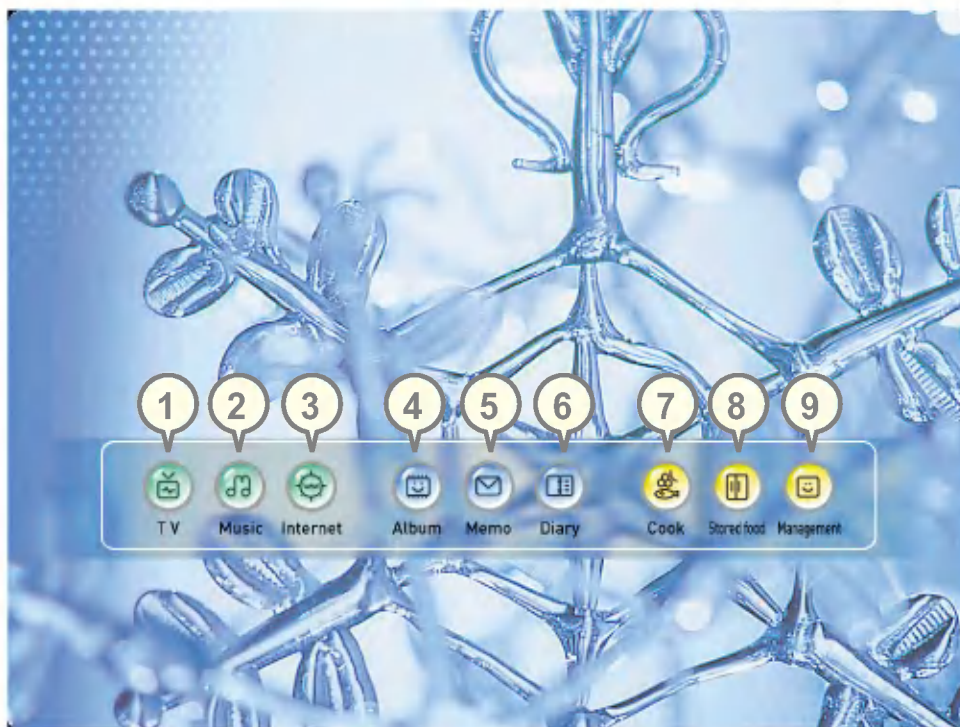
Internet 10~19

✓ Software of this product may be upgraded without a prior notice in order to improve quality of product.



Main Screen

Each part name of screen



You can watch television.

You can listen to the music saved in the music box.

Internet

You can easily be connected to Internet at home.

You can take a picture of family and use it as a screen saver when not using them screen.

You can leave a text, video, voice or drawing memo to your family.

Digital Diary

You can record and memorize family anniversary and other schedule according to the date.

Stored Food

You can record the food storage in the refrigerator.

Management

You can use various management programs like self-diagnosis and Preferences settings.

There are all types of cook information by course, ingredient and country and are all types of nutrition information such as calorie information by food and diet treatment by disease.

TV -Watching TV

Sequence of function in screen

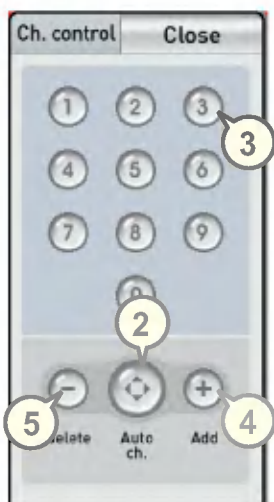
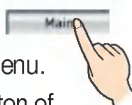
Channel number is displayed for about 5 seconds.



Main

Touch the button and the screen changes to the main menu.

- You may touch the MAIN button of remote control.



adjust Volume

6 Touch Volume button on the menu bar. Then adjust volume with ◀ ▶.

■ It is convenient to use the Volume (+), (-) of remote controller.

Watch Television

Firstly, touch the TV button on the touch screen.

■ In order to watch TV, firstly record and input the broadcasting channel in the particular region. Then select channel by Touching channel code (▲▼) or the channel number (0~9) according to your taste.

1 When TV screen appears, touch Ch. Control button from the below menu bar.

■ The menu bar disappears after 10 seconds if there is no response. You can see the menu bar again if touching any place on the screen.

2 Firstly set channel by touching Auto. Ch. From Ch. Control window.

■ To setup automatic channel, make sure of using it at the airtime of TV with the TV cables connected.
- For method to connect TV antenna and video cables, see user's manual.

memorize or delete specific channel...

3 Select the desired channel by touching Channel number button from Ch. Control window.

4 In order to memorize the selected channel, Touch Add button.

5 To delete the selected channel, touch Delete button.

Note

If setting of automatic channel is completed, check the saved channel by touching Channel ▲ or ▼.
For the automatic channel setting, only channel in air is memorized, but other channels are not memorized.



TV-Display Adjustment



Control the Screen.....

- 1** Touch Screen Control button on the below menu bar of the TV screen.
- 2** Use the ◀▶ button to set the screen status according to the screen.
 - You can control brightness, contrast, color and tint.
- 4** Touch Save button in the desired screen status

Select the Screen to Default Setting

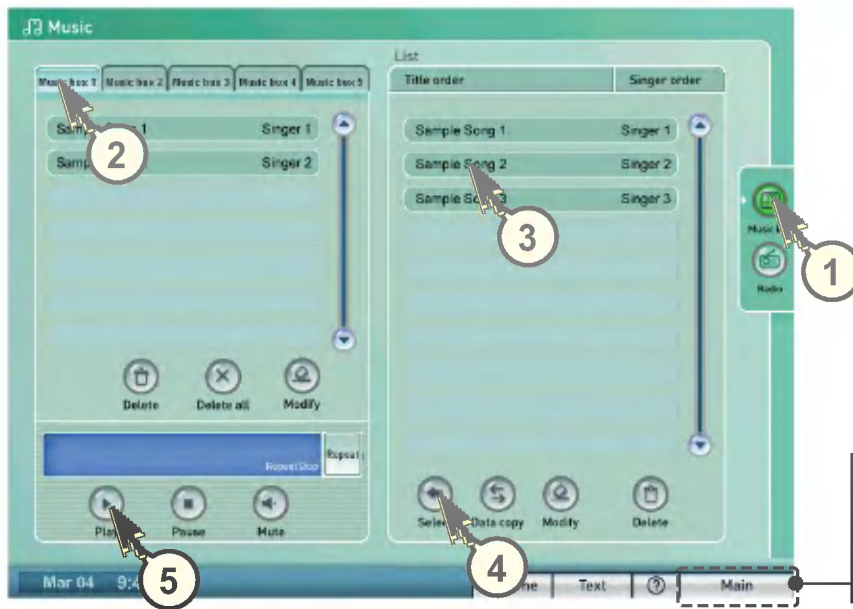
- 3** Touch Default button.
- 4** Touch Save button.

! Note

1. Default Setting?

Default setting made by LG-Electronics.

2. An afterimage may occur in the screen rapidly moved during watching TV. It does not mean failure of product.



Caution

Copyright and additional rights according to the law of digital sound source is possessed by the manufacturer.

If customer duplicate and distribute the source, the person will be holding all the responsibility for any disadvantages caused by his or her action and can be prosecuted according to the civil & criminal law.

Main

Touch the button and it will return to the Main.

listen to music...

- 1 Touch Music box.
- 2 Select one of music lists among lists of Music box 1 ~ Music box 5.
- 3 Select song from the whole of song list.
- 4 Select song desiring to listen Touching Select button.
- 5 Touch Play button.
 - If Touching Play button, songs in the song list will be continuously played according to sequence.
 - To adjust volume, Touch Volume button and then adjust it appropriately.

Music box 1~5

Songs selected from the song list will appear in sequence.

Delete Button (Selection List)

Touch when deleting songs selected from the song list.



Delete All Button

Touch when deleting all songs in the song list.



Repeat Play On/Off Button

Touch when continuously listening to particular song.



Play Button

Touch when listening to the currently selected song.



Pause Button

Touch when stopping the current song.



Mute Button

Touch when desiring to select mute function.



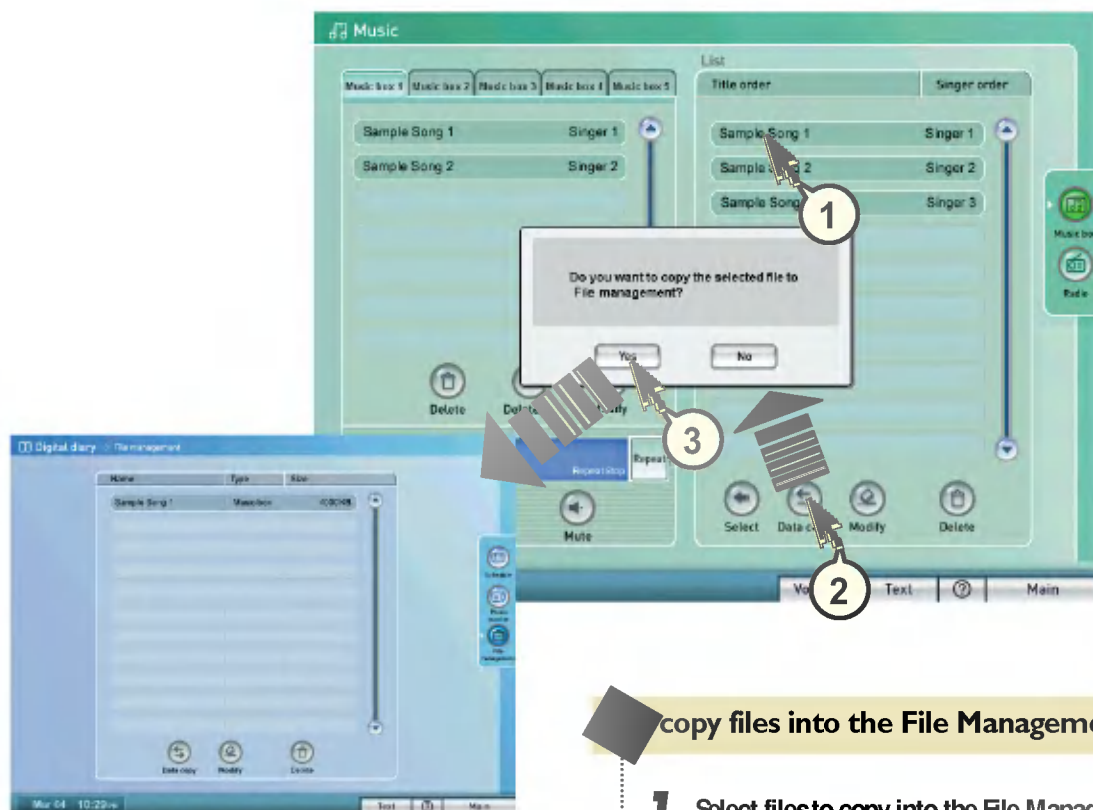
Select Button

Touch when selecting song to listen to.



Note

1. You can select Music box 1 ~ Music box 5 from the song list.
2. If you want to listen to particular song among the song list, select the song and touch Play.
3. You can easily search for desired songs because songs are arranged in the order of title if touching Title order of the whole of song list and in the order of singer if touching Singer order.
4. Songs in the song list will not be deleted while music is playing.



Note

Copy files into the File Management when desiring to keep important files or attach data to the Internet mail.

copy files into the File Management...

- 1 Select files to copy into the File Management.
- 2 Touch Data Copy button.
- 3 Select Yes to copy the selected file into the File Management.
- 4 Check copied data from the File Management of the Digital Diary.

Data Copy Button

Touch when saving and keeping desired songs.



Modify Button

Touch when modifying song title and singer's name.



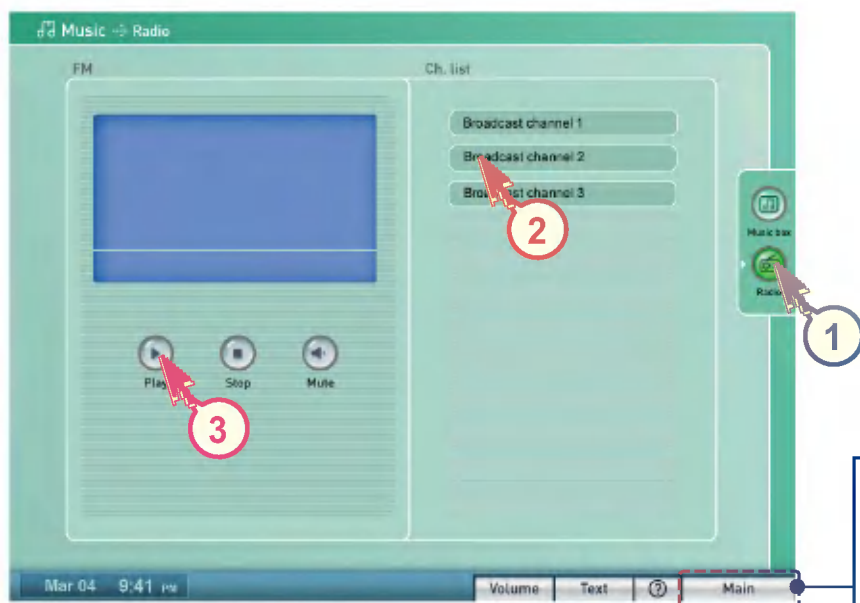
Touch Text button on the below menu bar.

Delete Button

Touch when deleting songs from the whole of song list.



- You cannot listen to songs if deleting from the whole of song list.



listen to radio.....

1 Touch Radio button.

2 Select radio channel to listen.

3 Touch Play button.

! Caution

Radio uses streaming service of each broadcasting company.

To listen to radio, Internet connection must be done.



Internet

Name and Function of Each Part.



Internet Address Input Window

Input the Internet address with the keyboard.

Main button

Touch the button to return to the Main.

Open of New Window Button

Touch when opening a new Internet window.

Back Button

Touch when returning to previous window.

Forward Button

Touch when returning to the forward window.

Reload Button

Touch when displaying the page for the second time.

Home Button

Touch when returning to the page displayed by primary address.
(<http://www.dreamlg.com>)

Stop Button

Touch when terminating the Internet connection.

Favorites Button

Touch when enlisting Internet address frequently accessed and easily visiting there.

Close Button

Touch when closing the current Internet window.

Connection Confirm Window

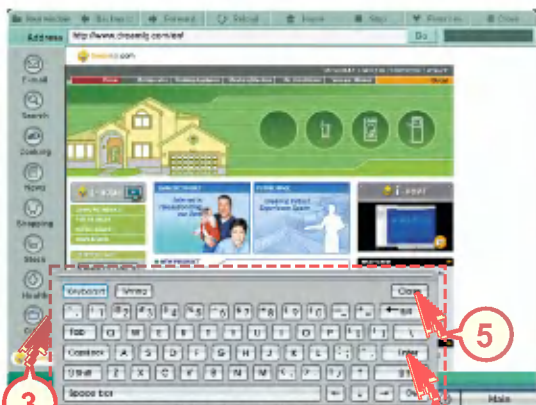
Shows the condition of the Internet connection.

Text Button

Touch when inputting the Internet address.



Note You cannot use dial pad, real player etc from Internet.



Entering by directly inputting into other Internet address

- 1 Touch Text button.
Keyboard is activated.
- 2 Touch the Address Input window.
- 3 Touch the desired Internet address with the hand or a touch pen or designate it by using a Writing character recognition function.
Ex) <http://www.lge.com>
 - Make sure the cursor blinks in the Address Input window.
- 4 Touch Enter button allows connection to the desired site.
- 5 Touch Close button on the keyboard.

Note

1. Initial window that is firstly connected in Internet is a Dream LG portal site. The initial connection site may be changed in the Internet of the Management.
2. Press **new window** button to open a new window.
3. Press **Close** to close the current window.
4. Up to 3 Internet windows are available.



Internet -Bookmark



Save in Bookmark

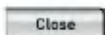
- 1** Connect the page you want to save as your favorite.
- 2** Touch Favorites button.
- 3** Select one of the groups
 - ☐ You can easily manage the Bookmark list by using the Group.
- 4** Touch Add button.
Check name of the accessed site.

Delete Address in Bookmark.

- 5** Select Internet site at the Bookmark.
- 6** Touch Delete button

Close Button

Touch when closing Internet window



Go Button

Touch when connecting the site you chose



Modify Button

Press when modifying information of the enlisted site or group name.



Delete Button

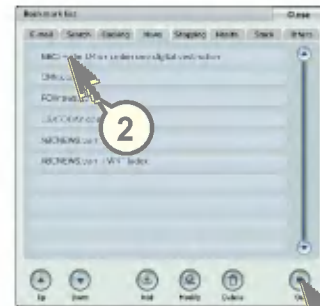
Touch when deleting the address in Bookmark.



Add Button

Touch when adding the site to your Bookmark.



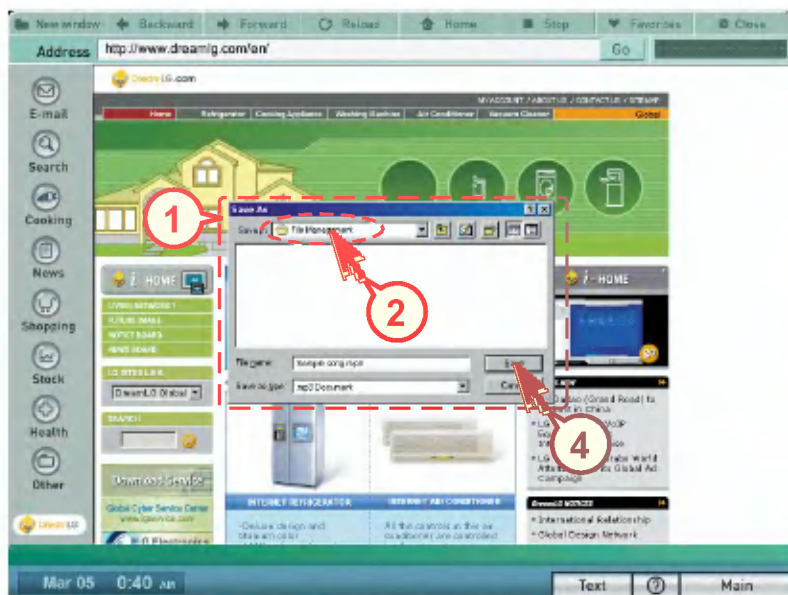


Connecting through Bookmark

- 1 Touch Favorites button.
- 2 Select the site, which you want to connect.
- 3 Touch Go button to connect to the particular site.



Internet – Downloading Method



download files....

- 1** A directory window appears if selecting the file to download.
- 2** Click File Management folder.
- 3** Touch Save button.
 - You can find saved files from the File Management of the Digital Diary.

Caution

1. Even if downloading for stabilization of the system, you could not execute or check those except for some data formats used in album, memo or music box.
2. You may lose important data if saving folders other than File Management folder.

Note

For method to check contents saved, see the File Management from the Digital Diary.



Method to enter letters Using keyboard



✓ Above keyboards appear if pressing Text button of each menu.

English Keyboard

To input capitals, touch the (CapstLock) key and then touch desired Alphabet.



Caution

Make sure the cursor blinks by touching each input window when inputting the text.

No text is inputted when the cursor does not blink in the input window.



Method to enter letters Using keyboard



Use of Keyboard

1. Keyboard

Touch when using keyboards.

2. Writing

Touch when using writing recognition function.

3. Tab

Touch when moving the cursor to next window.

4. CapsLock

Touch when changing the English letter from small to capital.

5. Shift

Touch when inputting the upper characters on the keyboard.
Touch again to return to letters below.

6. Space Bar

Use when providing a space between characters.

7. Enter

Touch when changing the line or entering "OK" during entry of contents.

8. Back Space

Touch when moving the cursor backward or deleting it.

9. Close

Touch when closing the keyboard.

10. Del

Touch when deleting character.

11. Internet Address Entry Key

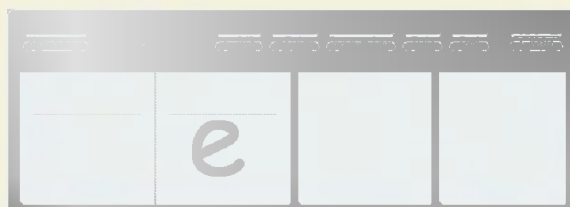
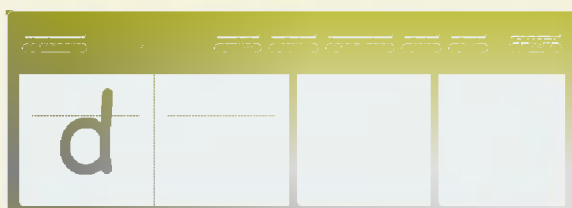
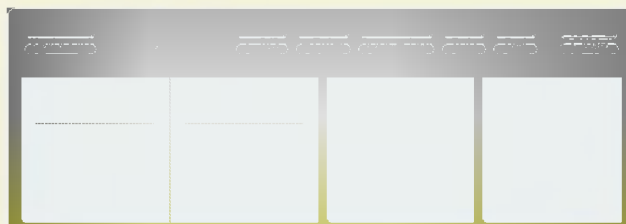
Touch to easily enter Internet addresses.



Method to enter Writing character

- ✓ If touching Writing button, it is converted to the writing entry mode.

The Enter window consists of English Enter, Numeric Enter and Special Character Enter boxes.



Method to input English

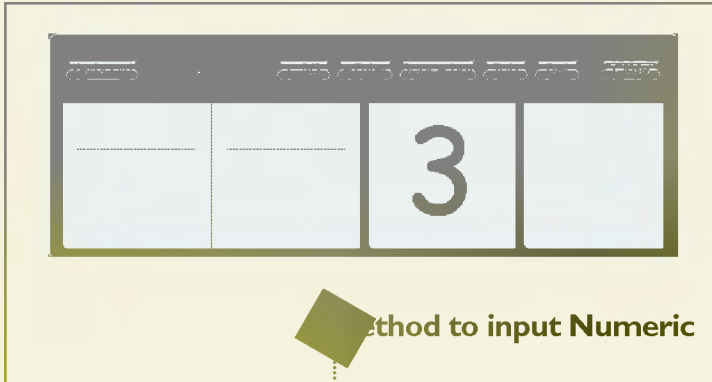
You must write characters in the English Writing Enter box one by one, and write the capital character across the separation line between small character and capital character and write small character below the separation line. In this case, shape of written character is not used for separation between small character and capital character.

Note

You can rapidly input characters if consecutively using both Writing Input windows.



Method to input Writing character



You must write characters one by one in the numeric input box.

Gesture Enter

Gesture is used to edit text already inputted. If writing gestures numerated on (Table 1), edition of text is executed.

A black point is a starting point of a stroke in the writing method as described in the (Table 1).

Note

- Writing recognition function cannot easily recognize all characters. This is likely due to user's writing posture or method but it does not mean abnormality of products.
- "Annex" shows method to write characters. Recognition can be done even writing in other manner but writing in such manner as suggested in this table allows more accurate and rapid entry.

(Table 1) Gesture Writing Method

Function	Writing method	Function	Writing method
Space bar		Backspace	
Enter		Tab	
Del		—	—

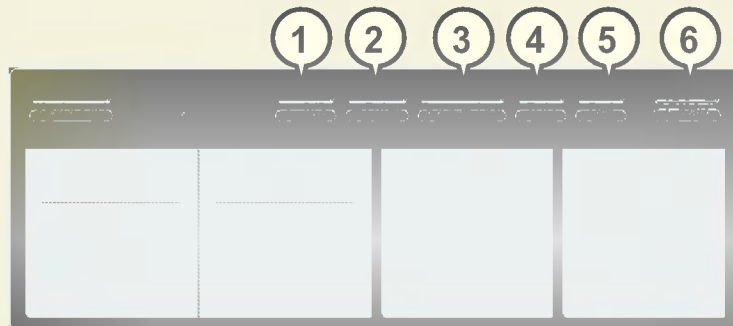


Method to input writing character



You must write characters one by one in the special character input box.

Input of other keys



1. Back Space

Touch when moving the cursor backward or deleting it.

2. Enter

Touch when changing the line or entering "OK" during entry of contents.

3. Space Bar

Touch when deleting the letters.

4. Tab

Touch when moving the cursor to next window.

5. Del

Touch when deleting the front character.

6. Close

Touch when closing the keyboard.

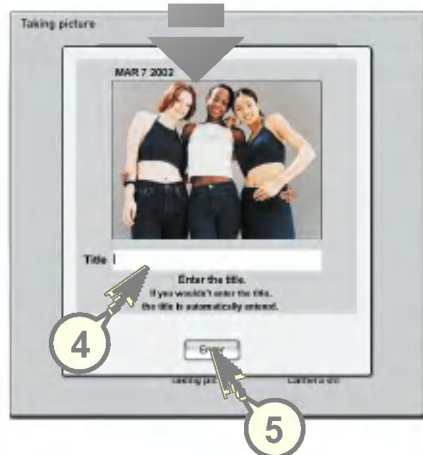


Note

You can set pictures taken in Album as screen saver in the Setting of the Management.

Main

Touch the button and it will return to the Main.



First, adjust the angle of the monitor so that the image appear well in the screen, move the subject and place it is right pose.



1 Press Camera On button.

2 If touching Taking Picture button after taking a pose, picture will be taken after 3 seconds

- You can take a picture even in a remote distance if touching PHOTO button of the remote controller.

3 Touch Text button after taking pictures
For method to use the keyboard, see P 15.

4 Touch a blank field of title if the keyboard appears The cursor blinks

5 Touch Enter button after inputting title.



- 1** Select the picture that is to be deleted.
Check the picture in blue frame.

- 2** Touch Delete button.

Camera On Button

Touch when opening the Taking Picture window.



Camera Off Button

Touch when closing the Taking Picture window.



Taking Picture Button

Touch when taking picture.
After 3 seconds, picture is taken.



Modify Button

Touch when modifying title of picture.



Data Copy Button

Touch when saving and keeping desired picture.



Delete Button

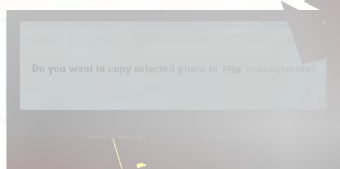
Touch when deleting picture from the list.





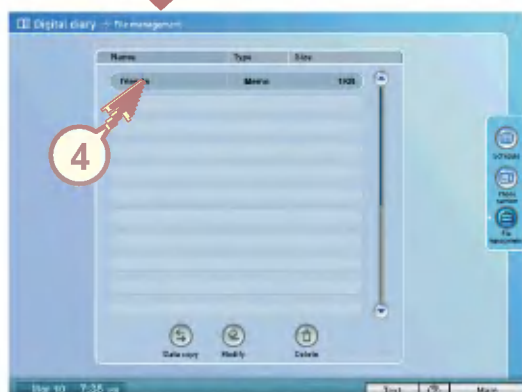
Note

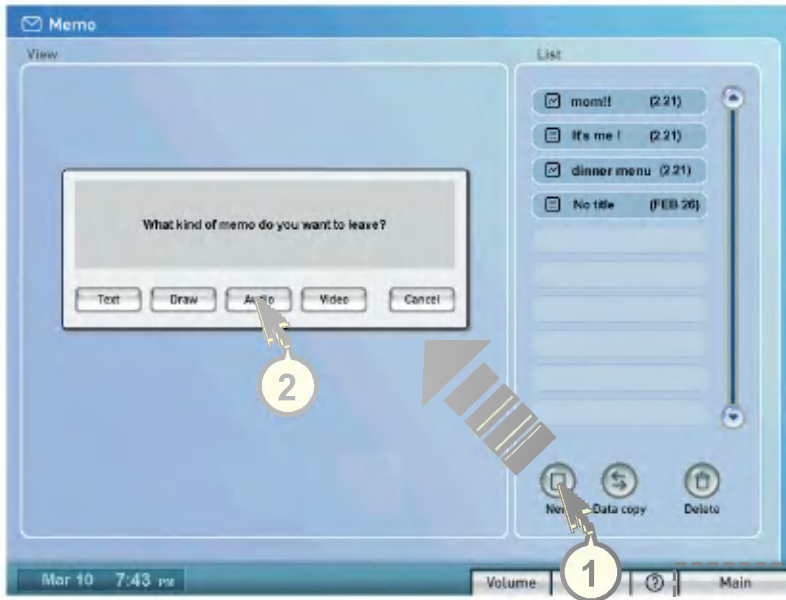
Copy files into the File Management when desiring to keep important files or attach data to internet mail.



Copy picture file into File Management...

- 1 Select files to copy into File Management.
- 2 Touch the Data Copy button.
- 3 Select Yes to copy selected files to File Management.
- 4 Check copied data from the File Management of the Digital Diary.





no List Status depending
on color of button

Gray

Message
checked

Blue

Message
during check

Sky Blue

Message not
checked

Main

Touch the button and it will
return to the Main.

- 1 Touch New button.**
Memo Type Select window appears.

- 2 Select type of memo desiring to leave.**
☐ There are four types of Text, Draw, Audio, Video.

Note

1. If a new memo is saved, a notice window appears on the main screen to show that there is memo.



2. You can see the saved memo if pressing

 New memo .

New Button

Touch when
writing new memo.



Text Button

Touch when
writing text memo.



Video Button

Touch when
recording video memo.



Audio Button

Touch when
recording audio memo.



Data Copy Button

Touch when
saving and
keeping memo in
the file management.



Draw Button

Touch when
writing Draw memo.



Cancel Button

Touch when
canceling input memo.



Delete Button

Touch when
deleting memo.









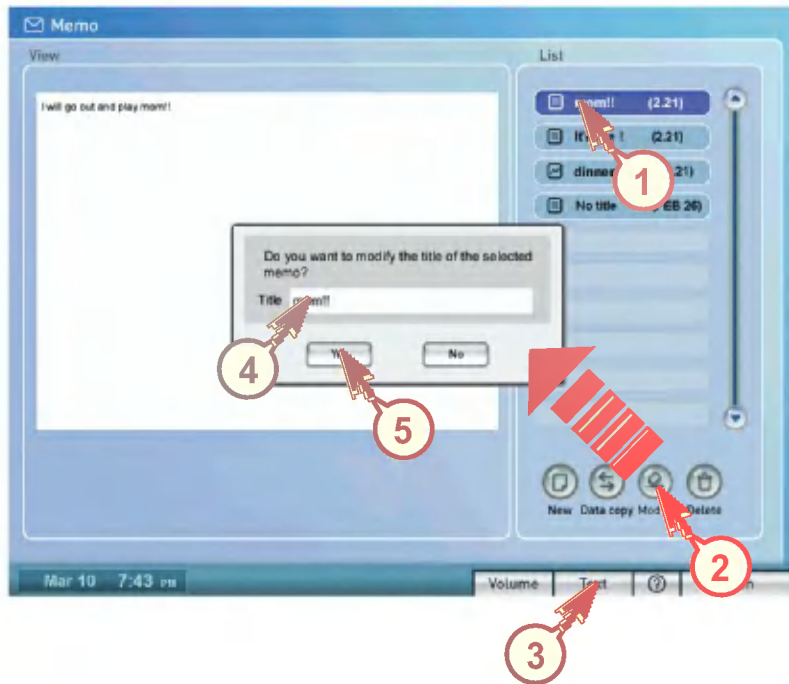
1 Select memo to delete.
Contents of memo appear.

2 Touch Delete button.

3 Touch Yes to delete
the selected memo.

Icon Display depending on Memo Type

-  Text Memo
-  Drawing Memo
-  Audio Memo
-  Video Memo



1 Select memo to modify.

2 Touch Modify button.

3 Touch Text button.

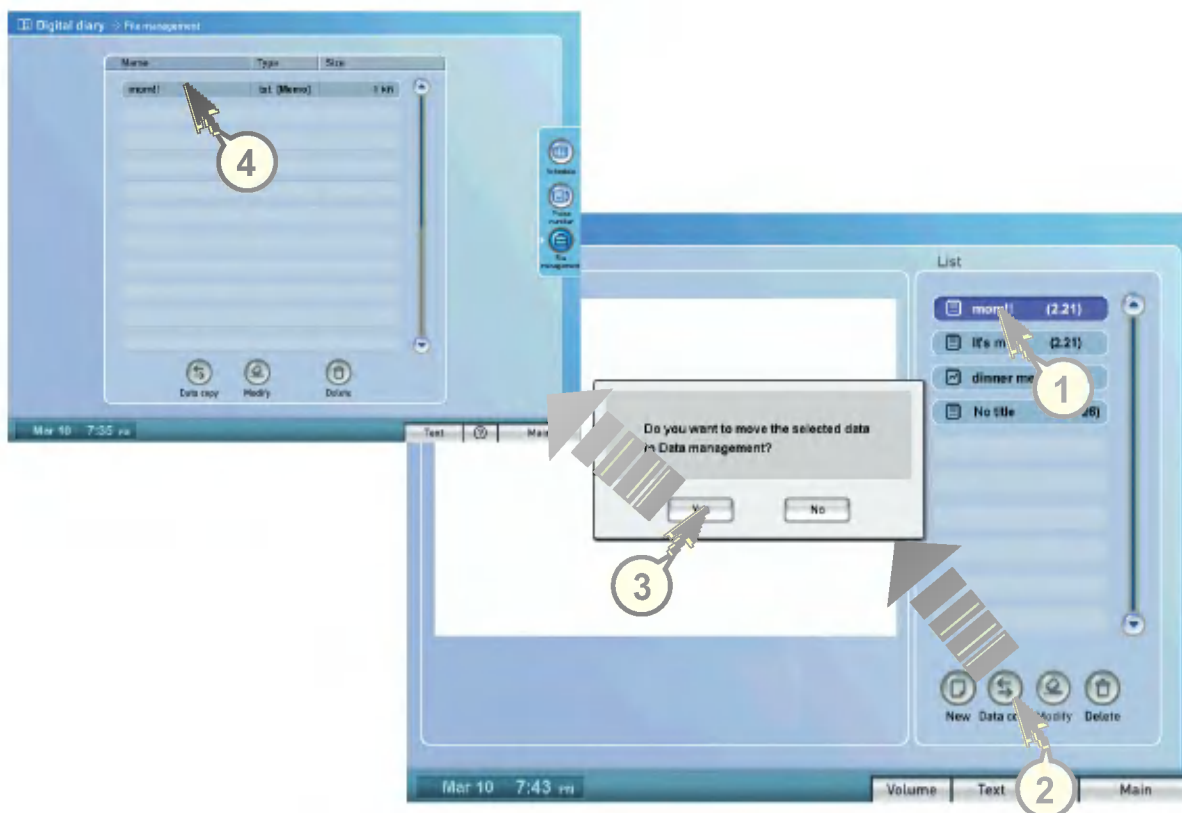
4 Modify title.

5 Touch Yes button.

! Caution

You can input text when the cursor blinks on the Title Enter window.

Touch the Enter window when there is no blinking.



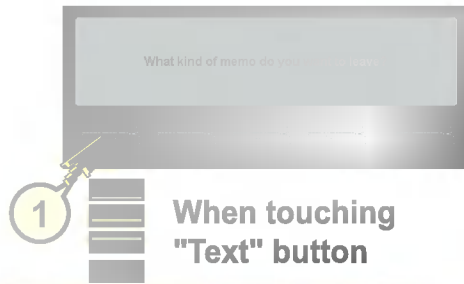
Copy memo files to the File Management...

- 1** Select files to copy to the File Management.
- 2** Touch Data Copy button.
- 3** Select Yes to copy selected files to the File Manage.
- 4** Check copied data from the File Management of the Digital Diary.

! Note

Copy files to the File Management when desiring to keep important files or attaching data to Internet mail.

Memo – Text memo



When touching
"Text" button

Caution

You can leave memo when the cursor blinks on the Text Memo window. Touch the Text Memo window when there is no blinking.



Note

1. If memo is saved, a notice window appears on the main screen to show that there is memo.



2. You can check saved memo if pressing the (New memo).

- 1 Touch Text button on the Memo Type window.
- 2 You can write memo with the keyboard or leave memo with the hand or touch pen by using writing recognition function.
- 3 If input is done, touch Close button of the keyboard.
- 4 Touch Save button.
- 5 Input title by using the keyboard and then touch OK button.

Memo – Draw memo



- 1** Touch Draw button on the Memo Type window.
- 2** You can write memo with the hand or touch pen.
 - You can variously represent Draw memo using thickness, color button below the Draw memo window.
- 3** Touch Save button.
- 4** Input title with the keyboard and then touch OK button.

For method to use the keyboard, see page 15.

Write Button

Touch when writing Draw memo.



Save Button

Touch when saving memo.



Erase Button

Touch when deleting some and then delete with the hand or touch pen.



Cancel Button

Touch when canceling memo input.

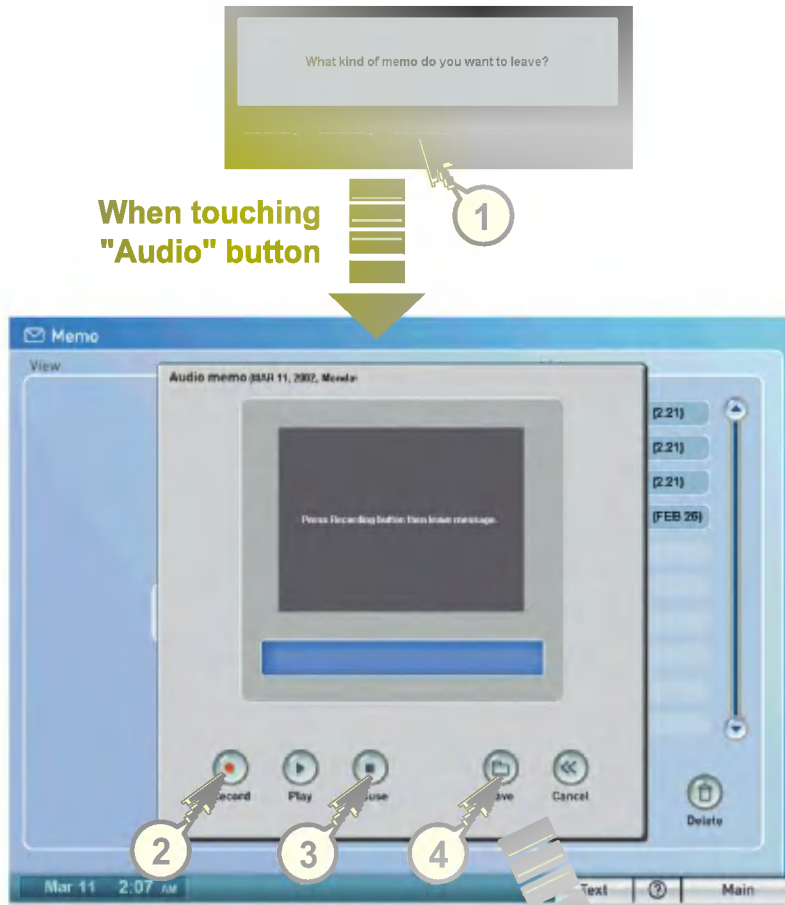


Erase All Button

Touch when deleting all input memo.

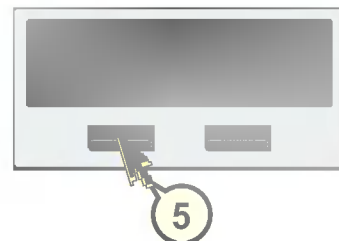


Memo – Audio memo

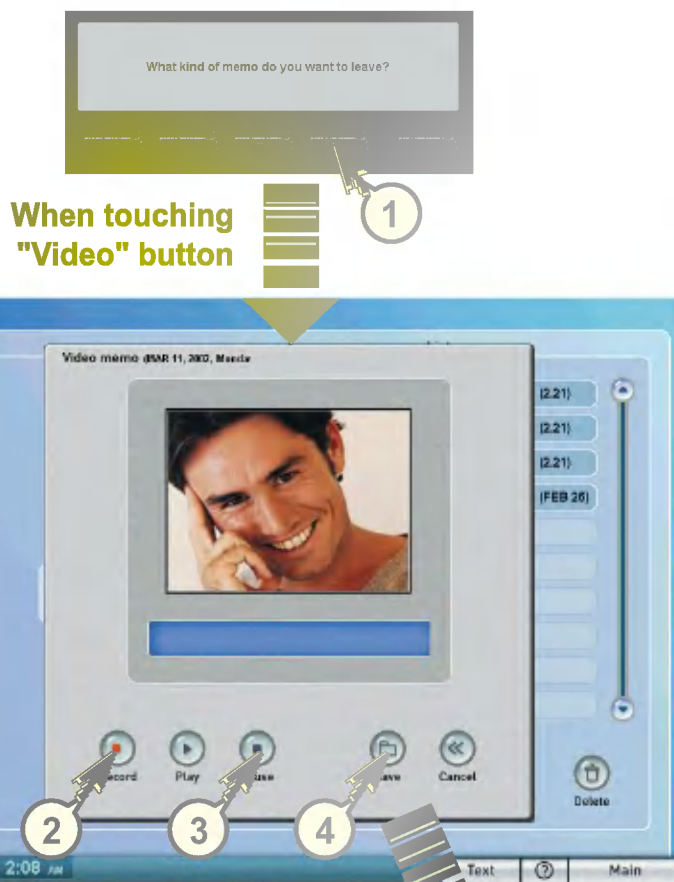


- 1** Touch Text button on the Memo Type window.
- 2** Touch Record button and record audio.
- 3** If recording is finished, touch Pause button.
 - You can check recorded memo if touching "Play" button.
 - Adjust volume by touching Volume button on the below menu bar.
- 4** Touch Save button.
- 5** Input title with the keyboard and then touch OK button.

For method to use the keyboard, see page 15.

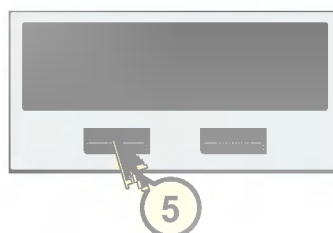


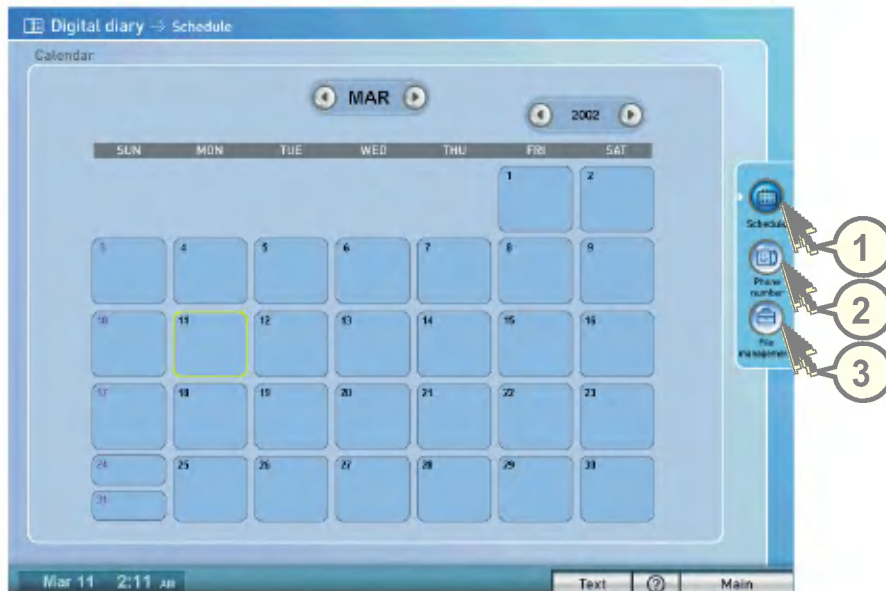
Memo – Video memo



- 1 Press Video button on the Memo Type window.
- 2 Take a pose and then touch Record button.
- 3 Touch Pause button if recording is finished.
 - You can check recorded memo if touching "Play" button.
 - Adjust volume by touching Volume button on the below menu bar.
- 4 Touch Save button.
- 5 Write title with the keyboard and then touch OK button.

For method to use the keyboard, see page 15.





1



Schedule

You can input and manage all types of anniversary day, payment date of imposts or promise etc.

2



Phone Number

You can input phone numbers for easy retrieval and management.

3



File Management

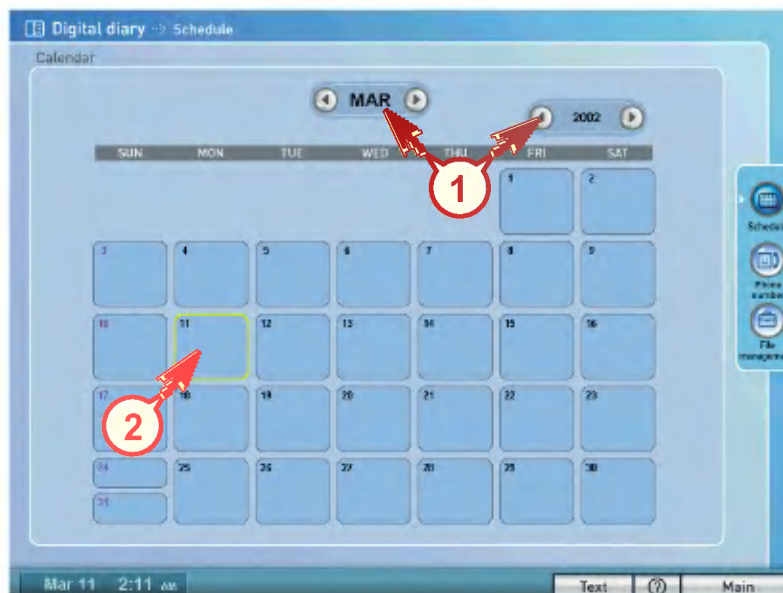
You can easily keep and manage important memo or pictures or music files to be downloaded from the Internet.

Note

- Firstly set time when firstly installing refrigerator.
You can execute time setting in Setting of the Management menu among the main menu.
- Today's date is displayed in a yellow memo box.



Digital Diary – Schedule



- 1 Select the year and the month, which you want to register.
- 2 Select the date.
- 3 Write down schedule on the input window using hand or touch pen.
- 4 Select your Anniversary Icon.
- 5 Touch Save button.

- 1 Select the year and the month when you want to check your schedule.
- 2 Select the date. Icon is displayed on the relevant date if schedule is input.



Digital Diary – Schedule



Anniversary Selection.

Touch the anniversary icon.

Correct the Content Partially

- 6 Touch Erase button. Erase the part you want to correct using hand or touch pen.
- 7 Touch Write button. Write new contents using hand or touch pen.
- 4 Touch Save button.

- 8 Touch Erase all button and all the letters will be erased.

Notify Schedule

If there is any schedule on the relevant date, a notice window appears to show that there is schedule when the screen firstly prompts on the relevant date.



You can check schedule if touching

Reminder

Note

Anniversary Icon cannot be deleted by pressing Erase button.
It is deleted when you touch the icon again.

Digital Diary – Phone Number



Note

- Phone numbers are arranged in the order of A, B, C based on name.

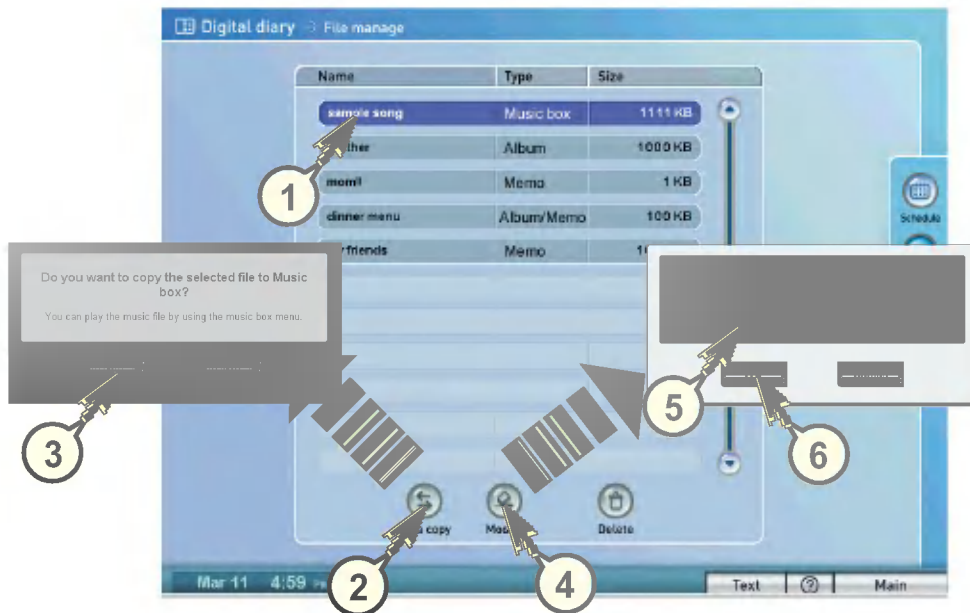
input new phone number....

- 1** Touch Add button.
- 2** Input name and phone number with the keyboard.
For method to use the keyboard, see page 15.
- 3** Touch Save button.
- 4** Touch Enter button.
■ Touch "Continue" button to continuously input other numbers.

retrieve phone numbers.....

- 5** Touch the relevant page of name to retrieve.
- 6** Retrieve by using ▲▼ when a number of phone numbers exist.

Digital Diary – File Management



check the relevant files.....

- 1** Select files to check.
- 2** Touch Data Copy button.
- 3** Select Yes to move selected data.
 - ☐ You can check files by using the relevant menu.

Caution

You cannot move or execute data for stabilization of the system except for the below data format.

Placement position depending on file type.

jpg	Album
avi, txt	Memo
bmp	Album, Memo
mp3	Music – music box

- 1** Select files to modify.
- 4** Touch Modify button.
- 5** Modify file name by using the keyboard.
For method to use the keyboard, see page 15.
- 6** Touch OK button.



Main

Touch the button to return to the Main.



1 Select method to classify cook.

☐ Cook is classified by course, ingredient and country.

2 Select desired classification of cook from each classification item.

3 Ingredients introduction and cooking recipe, etc for the selected menu appear if touching the desired menu.

☐ You can see more contents if using the ▲ ▼ button.

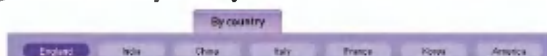
Classification by course



Classification by ingredient



Classification by country





1 Touch Find a Recipe button.

2 Input a cook name to search.
For method to use the keyboard,
see page 15.

4 Touch Search button.

3 Input ingredients of cook to search.

- You can more easily search if inputting two of cook ingredients to search in the ingredient 1 and ingredient 2.

For method to use the keyboard,
see page 15.

4 Touch Search button.

Cook – Nutrition Info.



- 1 Touch Nutrition Information button.
- 2 Select desired information.
- 3 You can check useful nutrition information if selecting desired classification information.

Cook – Nutrition Info.

Calorie Info.



Food Selection



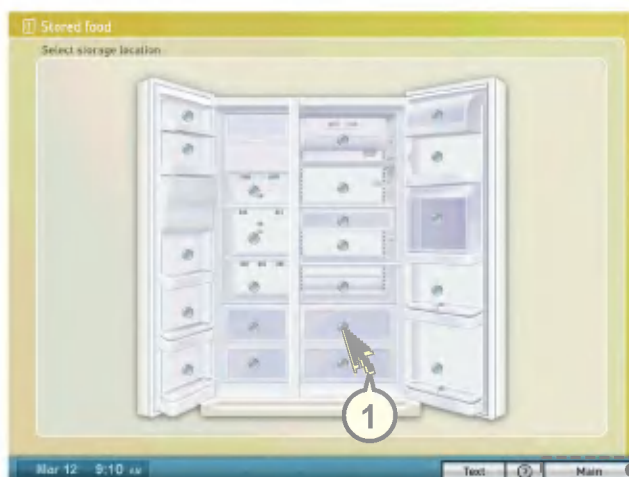
Storing Tips



Nutrition source foods



Stored Food

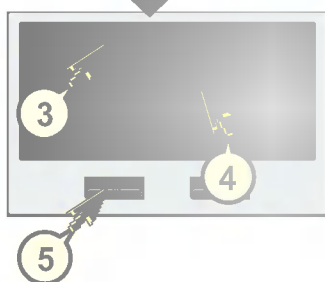
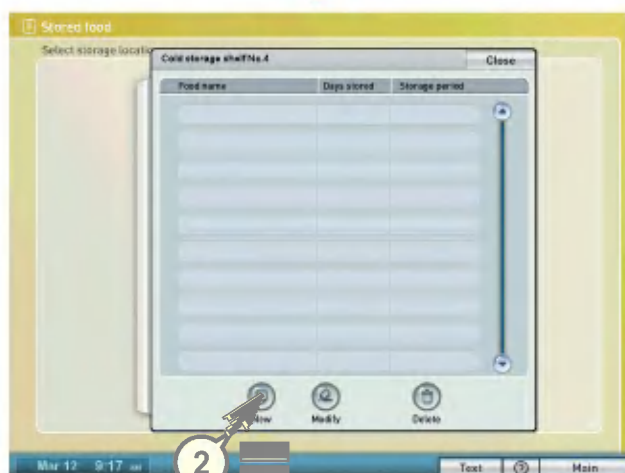


Caution

Days stored indicate period from the date recording/modifying food name to the current time.

Main

Touch the button to return to the Main



1 Touch a circle at a position desiring to record in the refrigerator figure.

2 Touch New button.

3 Record name of foods stored by using the keyboard.

For method to use the keyboard, see page 15.

4 Set the keeping period by touching the ▲▼.

■ Today's data is displayed in the storage period.

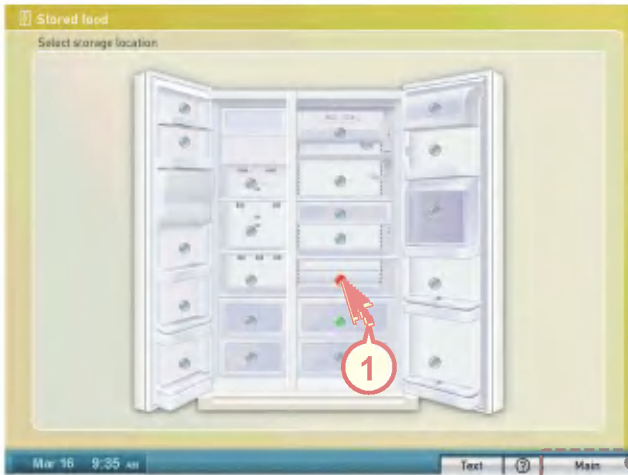
■ Days stored are automatically calculated from the input date.

5 Touch OK button.

■ The gray circle is changed to green color if food list is recorded.

1 Touch the circle at the desired position.

Stored Food

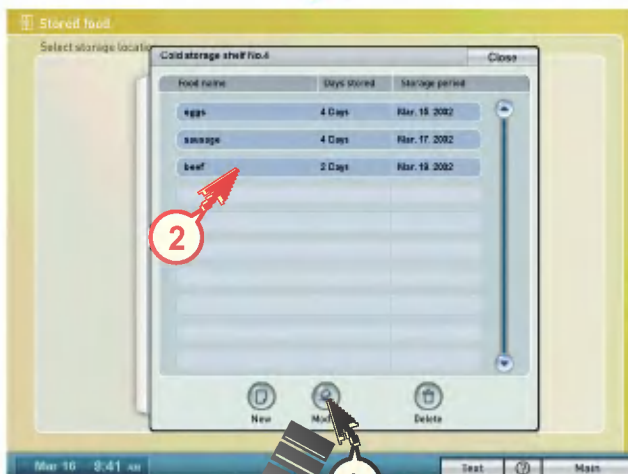


Information of storage period passed

- When food lists are not recorded
- When storage period does not pass
- When storage period passes

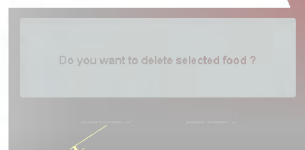
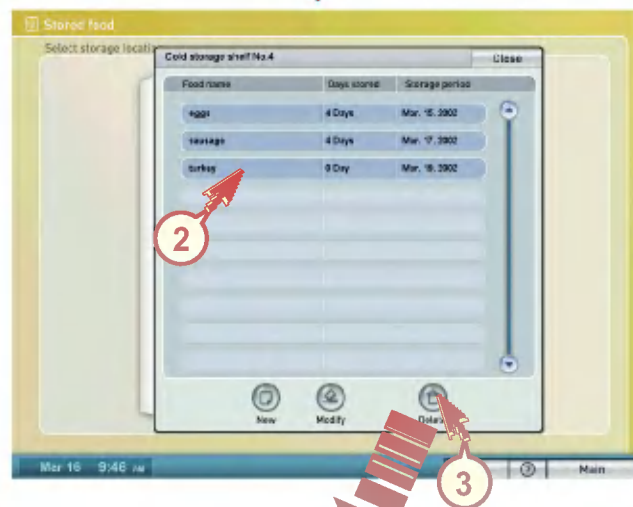
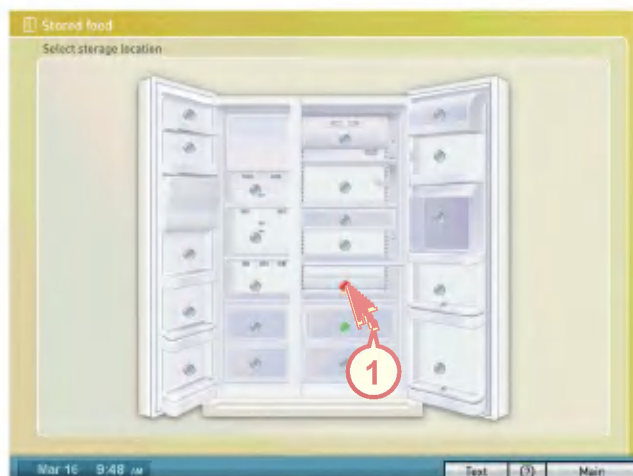
Main

Touch the button to return to the Main



- 1** Touch the circle at the desired position.
- 2** Select food name to modify.
- 3** Touch Modify button.
- 4** Modify contents by using the keyboard.
For method to use the keyboard, see page 15.
- 5** Touch OK button.

Stored Food




- 1** Touch the circle at the desired position.
- 2** Select food name to delete.
- 3** Touch Delete button.
- 4** Touch Yes to delete selected food.

Note

- Information window appears on the main screen to show that the storage period has passed if necessary.



- You can check the contents of storage food passed if touching the  Check stored food button.

Management – Self-Diagnosis

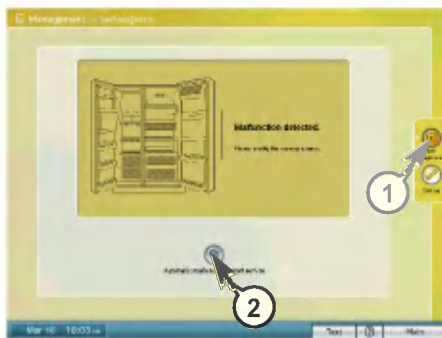
In Normal Operation



When failure is found through self-diagnosis, you can automatically report it to the service center via Internet.

1 Touch self-diagnosis button.

When there are defects that can be detected through Self-Diagnosis.



Case of defects that can be detected through self-diagnosis

- 1** Touch Self-Diagnosis button.
- 2** Touch Automatic Malfunction Report Service button.



<Figure 1> Internet report successful



<Figure 2> Internet report fail

When fig. 2 appears, call the service center on the phone.

Note

This refrigerator has self-diagnosis in failure of refrigeration or freezing function. But other defects such as shelf damages (defects that are related to exclusive function of this refrigerator) cannot be detected through self-diagnosis. In such case, report through Internet or call the service center right away. If Internet are not in service, use phone to contact the service center.

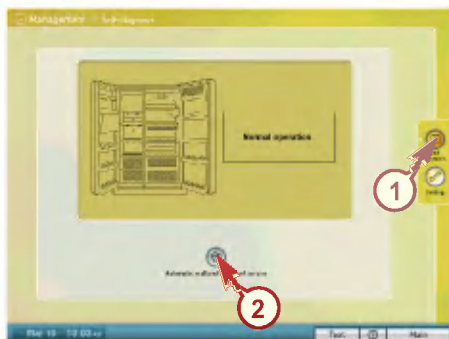
Caution

Firstly input dreamLG ID in Internet of the Management menu before performing automatic malfunction report.

If any malfunction occurs in product, do not power off but contact with the service center.



When there are defects that cannot be detected through Self-Diagnosis.



<Figure 1> Internet report successful



<Figure 2> Internet report failed.

Case of defects that cannot be detected through self-diagnosis

- 1** Touch Self-Diagnosis button.
- 2** Touch Automatic Malfunction Report Service button.

! Caution

1. If Internet report succeeded, you will see the message shown in (Fig1)
2. If it failed, you will see the message shown in (Fig.2)

Background



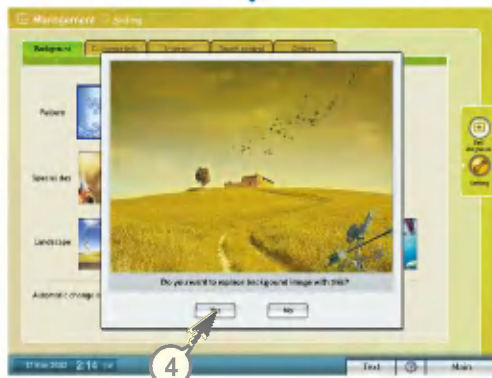
1 Touch Setting button.

2 Touch Background screen.

3 Select image to set as background screen.

4 Touch Yes

☐ Frame of image set as background screen turns to blue.



When not using the Background Automatic Change function

5 Change setting of the background automatic change (special day) to Not Use.

The background screen is automatically changed to below image when inputting birthday, wedding anniversary into the Schedule of the Digital Diary or on Christmas (When using automatic change)

- For method to use digital diary, see page 31.



Birthday

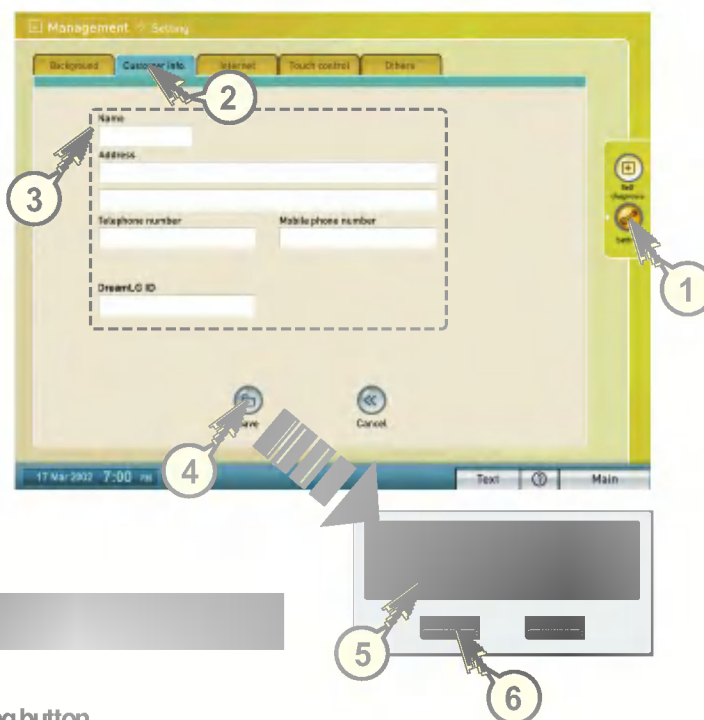


Wedding



Christmas

Customer information setting



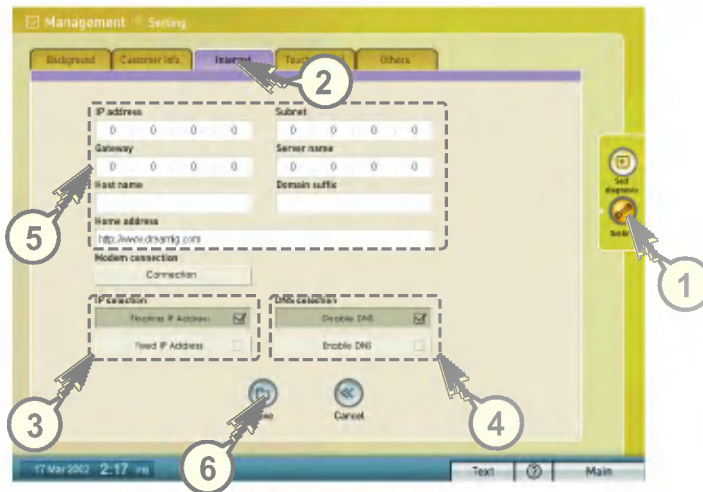
- 1** Touch Setting button.
- 2** Touch Customer info. button.
- 3** Input Name, Address, Phone number and dreamLG ID.
For method to use the keyboard, see page 15.
- 4** Touch Save button.
- 5** Input DreamLG password.
- 6** Touch OK button.

Note

Why do you input DreamLG ID?
It is intended to input DreamLG ID for providing more convenient service in automatic malfunction report or in connection of DreamLG. Connect to DreamLG site(<http://www.dreamlg.com>) and register your DreamLG ID. It needs not to always input them.

Management – Setting

Internet setting



- 1** Touch Setting button.
- 2** Touch Internet button.
- 3** Select whether you will use a fixed IP address or a floating IP address
- 4** Select whether you will be able to DNS or not.
- 5** Input information such as IP address, gateway, subnet, server name, host name and domain suffix.
- 6** Touch Save button.

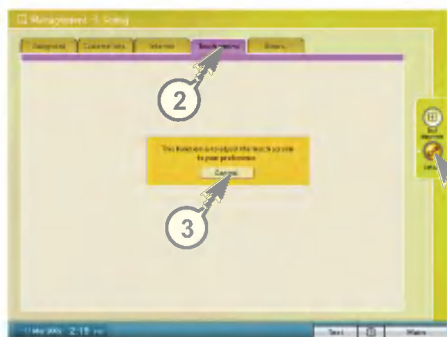
Note

1. To use Internet, there must be a unique address. You must assign IP address as phone numbers are assigned to every home.
2. There are two methods to use IP address. The one is to assign fixed IP address and the other is to receive and use floating IP address by using the DHCP server.

Caution

- To set Internet, you must input the necessary information for IP setting. Do not input information at your option but always contact with the LG service center or ISP providers.
- In the initial installation, the LG service personnel provides service. You had better not modify the initial inputs for stability.

Touch screen

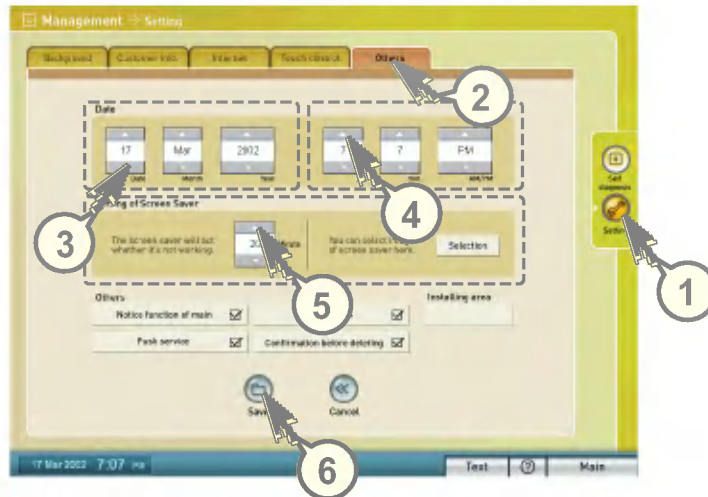


- 1** Touch Setting button.
- 2** Touch Touch Control button.
- 3** Touch Control button.
- 4** Touch the first point of the touch screen.
 - You had better accurately touch with a touch pen than touch with the fingers.
- 5** Touch the second point of the touch screen.
- 6** Touch Yes if control is most appropriately done after trying to touch the screen.
 - If the touch control is not properly done, do not save and do not touch any button for 10 seconds. It will return to the previous setting.

! Caution

For the touch screen, angle touching the screen varies depending on user's height and posture. Adjust it to your posture.

Others



1 Touch Setting button.

2 Touch Others button.

3 Adjust the date equivalent to Date, Month, Year by touching the ▲▼ button.

4 Adjust the time equivalent to Hour, Minute and AM/ PM by touching the ▲▼ button.

6 Touch Save button.

1 Touch Setting button.

2 Touch Others button.

5 Input the time to be converted as screen saver.

☐ Select the Never if desiring not to use a screen saver.

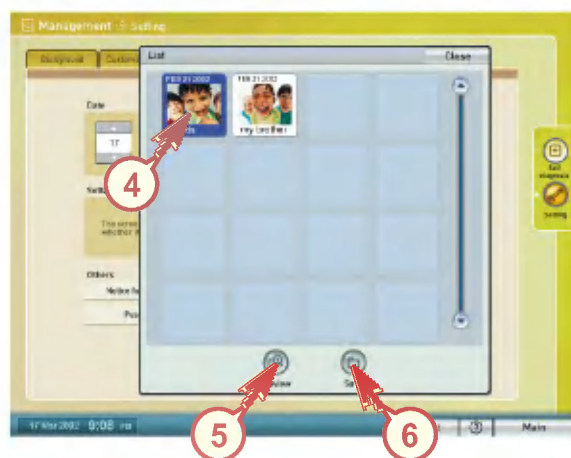
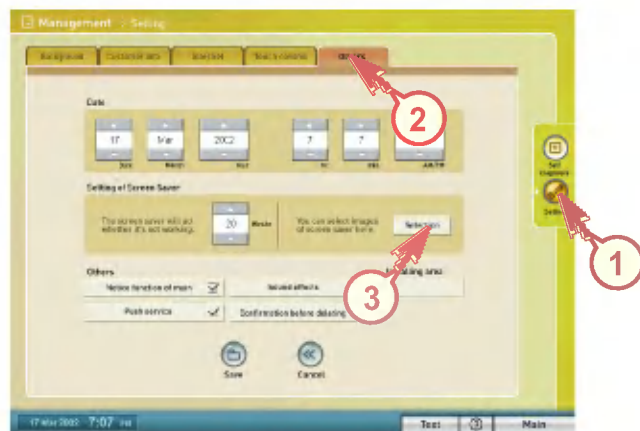
6 Touch Save button.

Note

1. If setting picture as screen saver, pictures set as screen saver continuously appear.
2. Even if not setting picture, it will be changed to the power saving mode while the monitor becomes off.
3. Firstly set time once the refrigerator is installed.



Others



1 Touch **Setting** button.

2 Touch **Others** button.

3 Touch **Selection** button.

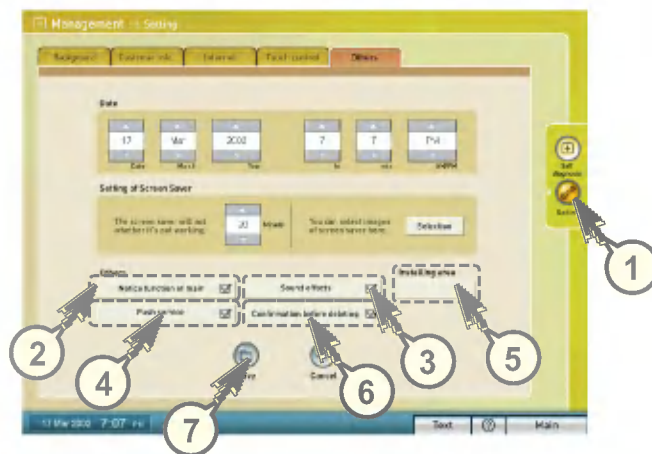
4 Select all the pictures set as screen saver.

■ Check blue color of the picture frame.

5 You can preview pictures of the screen saver if touching **Preview** button.

6 Touch **Save** button.

Others



- These are settings to use the notice function on the main to notify new memo or schedule, storage period passed or malfunction of refrigerator. See page 23, 33, 42.

- 1 Touch Setting button.
- 2 Select whether you will use this function.
- 7 Touch Save button.

- These are setting to turn on/off click sounds.

- 1 Touch Setting button.
- 3 Select whether you will use this function.
- 7 Touch Save button.

- This is setting to see weathering information from the main screen.

- 1 Touch Setting button.
- 4 Select whether you will use this function.
- 5 Select installing area.
- 7 Touch Save button.



- These are settings to display alarm message when deleting files.

- 1 Touch Setting button.
- 6 Select whether you will use this function.
- 7 Touch Save button.

✓ Caution

- Important files may be wrongly deleted if not using the confirmation message function in deletion.



Annex – Method to Write Character

1. Capitals of general writing English

	Writing Method		Writing Method
A	A A A	N	N N N N
B	B B B	O	O O O O
C	C C	P	P P P
D	D D D	Q	Q Q Q Q
E	E E E	R	R R R
F	F F F F	S	S S
G	G G G	T	T T
H	H H H H	U	U U U
I	I I I	V	V V
J	J J J	W	W W W W
K	K K K K	X	X X X
L	L L	Y	Y Y Y
M	M M M M	Z	Z Z Z



2. Small characters of general writing English



	Writing Method		Writing Method
a		n	
b		o	
c		p	
d		q	
e		r	
f		s	
g		t	
h		u	
i		v	
j		w	
k		x	
l		y	
m		z	



3. General writing numbers



	Writing Method			
0	0	0		
1	1	1		
2	2	2	2	2
3	3	3		
4	4			
5	5	5	5	
6	6			
7	7	7	7	
8	8	8	8	8
9	9	9		





	Writing Method		Writing Method
&	&	1	1
@	@ @	2	2
#	# #	3	3
\$	\$	4	4
%	% %	5	5
*	* * *	6	6
^	^	7	7
1	1	8	8
2	2	9	9
3	3	0	0
4	4 4	.	.
5	5	+	+
6	6	-	-
7	7	=	=
8	8	+	+
9	9	-	-
0	0	+	+
.	.	-	-
+	+	+	+
-	-	-	-
=	=	+	+
+	+	-	-
-	-	+	+
=	=	-	-
+	+	+	+
-	-	-	-



