

User's Guide

L2010P

Make sure to read the **Important Precautions** before using the product.
Keep the User's Guide(CD) in an accessible place for future reference.

See the label attached on the back cover and quote this information to your dealer when you require service.

This unit has been engineered and manufactured to ensure your personal safety, however improper use may result in potential e shock or fire hazards. In order to allow the proper operation of all safeguards incorporated in this display, observe the following basic rules for its installation, use, and servicing.

On Safety

Use only the power cord supplied with the unit. In case you use another power cord, make sure that it is certified by the applicable national standards if not being provided by the supplier. If the power cable is faulty in any way, please contact the manufacturer or the nearest authorized repair service provider for a replacement.

The power supply cord is used as the main disconnection device. Ensure that the socket-outlet is easily accessible after installation.

Operate the display only from a power source indicated in the specifications of this manual or listed on the display. If you are not sure what type of power supply you have in your home, consult with your dealer.

Overloaded AC outlets and extension cords are dangerous. So are frayed power cords and broken plugs. They may result in a shock or fire hazard. Call your service technician for replacement.

Do not Open the Display.

- There are no user serviceable components inside.
- There are Dangerous High Voltages inside, even when the power is OFF.
- Contact your dealer if the display is not operating properly.

To Avoid Personal Injury :

- Do not place the display on a sloping shelf unless properly secured.
- Use only a stand recommended by the manufacturer.

To Prevent Fire or Hazards:

- Always turn the display OFF if you leave the room for more than a short period of time. Never leave the display ON when leaving the house.
- Keep children from dropping or pushing objects into the display's cabinet openings. Some internal parts carry hazardous voltages.
- Do not add accessories that have not been designed for this display.
- During a lightning storm or when the display is to be left unattended for an extended period of time, unplug it from the wall outlet.

On Installation

Do not allow anything to rest upon or roll over the power cord, and do not place the display where the power cord is subject to damage.

Do not use this display near water such as near a bathtub, washbowl, kitchen sink, laundry tub, in a wet basement, or near a swimming pool.

Displays are provided with ventilation openings in the cabinet to allow the release of heat generated during operation. If these openings are blocked, built-up heat can cause failures which may result in a fire hazard. Therefore, NEVER:

- Block the bottom ventilation slots by placing the display on a bed, sofa, rug, etc.
- Place the display in a built-in enclosure unless proper ventilation is provided.
- Cover the openings with cloth or other material.
- Place the display near or over a radiator or heat source.

Do not rub or strike the Active Matrix LCD with anything hard as this may scratch, mar, or damage the Active Matrix LCD permanently.

Do not press the LCD screen with your finger for a long time as this may cause some afterimages.

Some dot defects may appear as Red, Green or Blue spots on the screen. However, this will have no impact or effect on the display performance.

If possible, use the recommended resolution to obtain the best image quality for your LCD display. If used under any mode except the recommended resolution, some scaled or processed images may appear on the screen. However, this is characteristic of the fixed-resolution LCD panel.

On Cleaning

- Unplug the display before cleaning the face of the display screen.
- Use a slightly damp (not wet) cloth. Do not use an aerosol directly on the display screen because over-spraying may cause electrical shock.

On Repacking

- Do not throw away the carton and packing materials. They make an ideal container in which to transport the unit. When shipping the unit to another location, repack it in its original material.

Connecting the Display

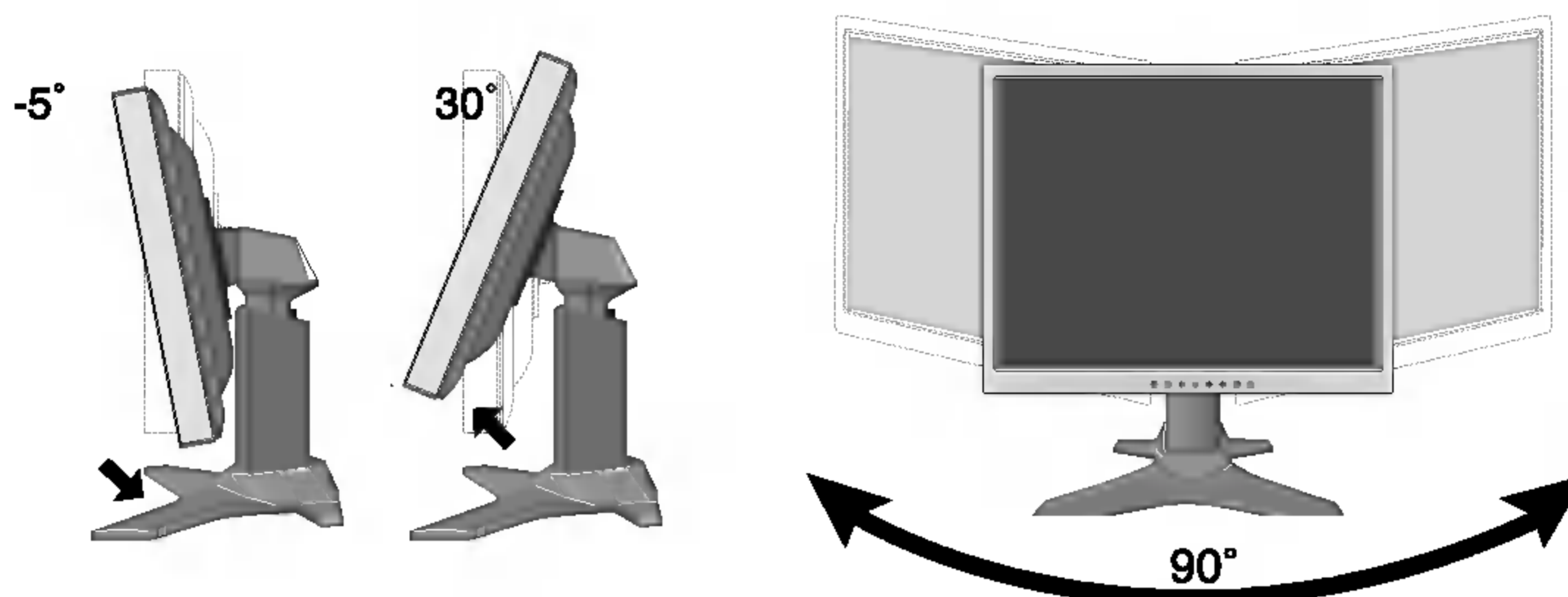
- Before setting up the monitor, ensure that the power to the monitor, the computer system, and other attached devices is turned off.

Positioning your display

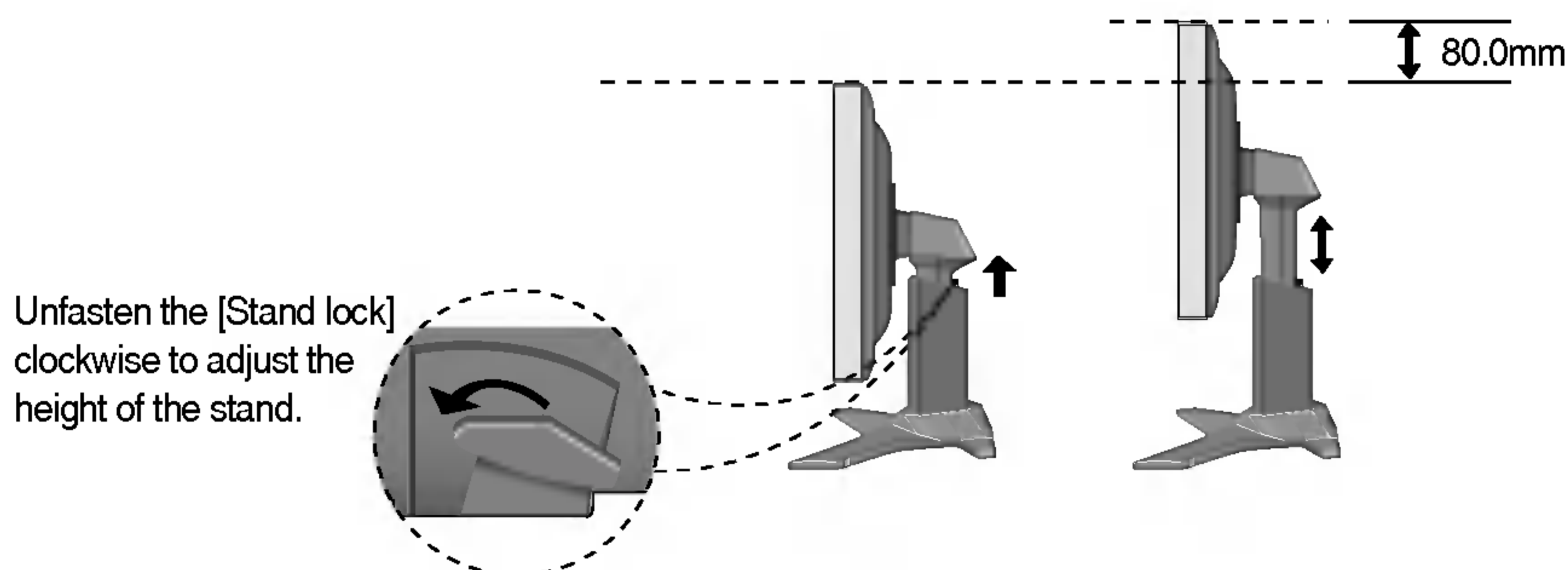
1. Adjust the position of the panel in various ways for maximum comfort.

- Tilt Range : $-5^{\circ} \sim 30^{\circ}$

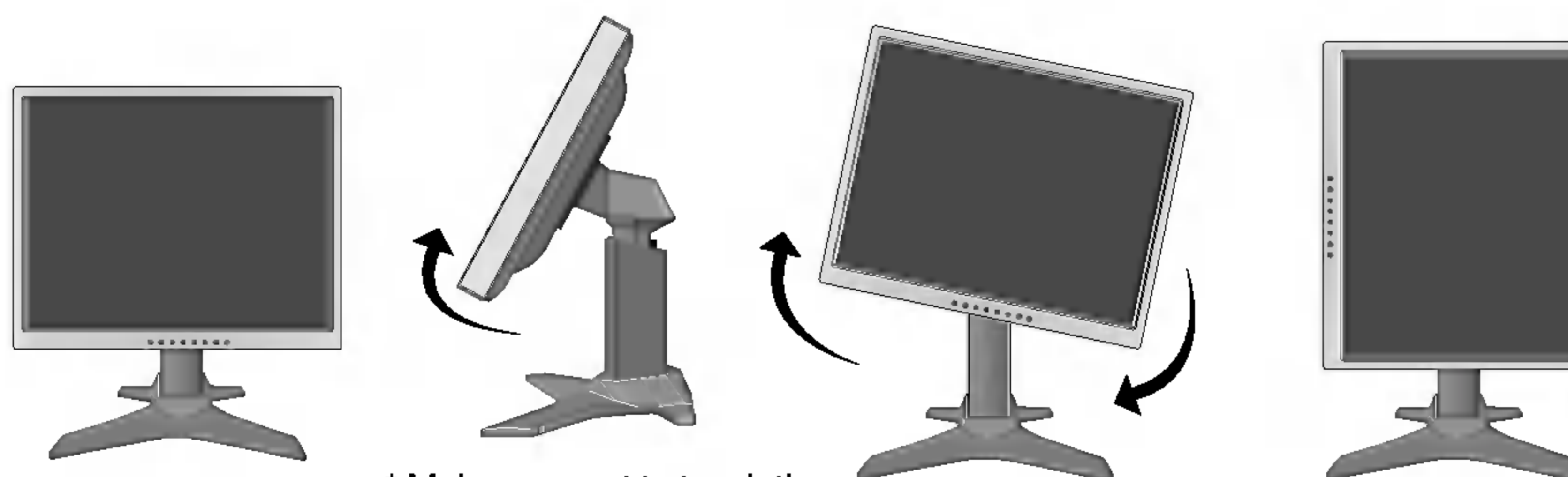
- Swivel : 90°



- Height Range : maximum 3.15 inch (80.0mm)



- Landscape & Portrait : You can rotate the panel 90° clockwise.
(* For detailed information, please refer to the Pivot Software CD provided.)



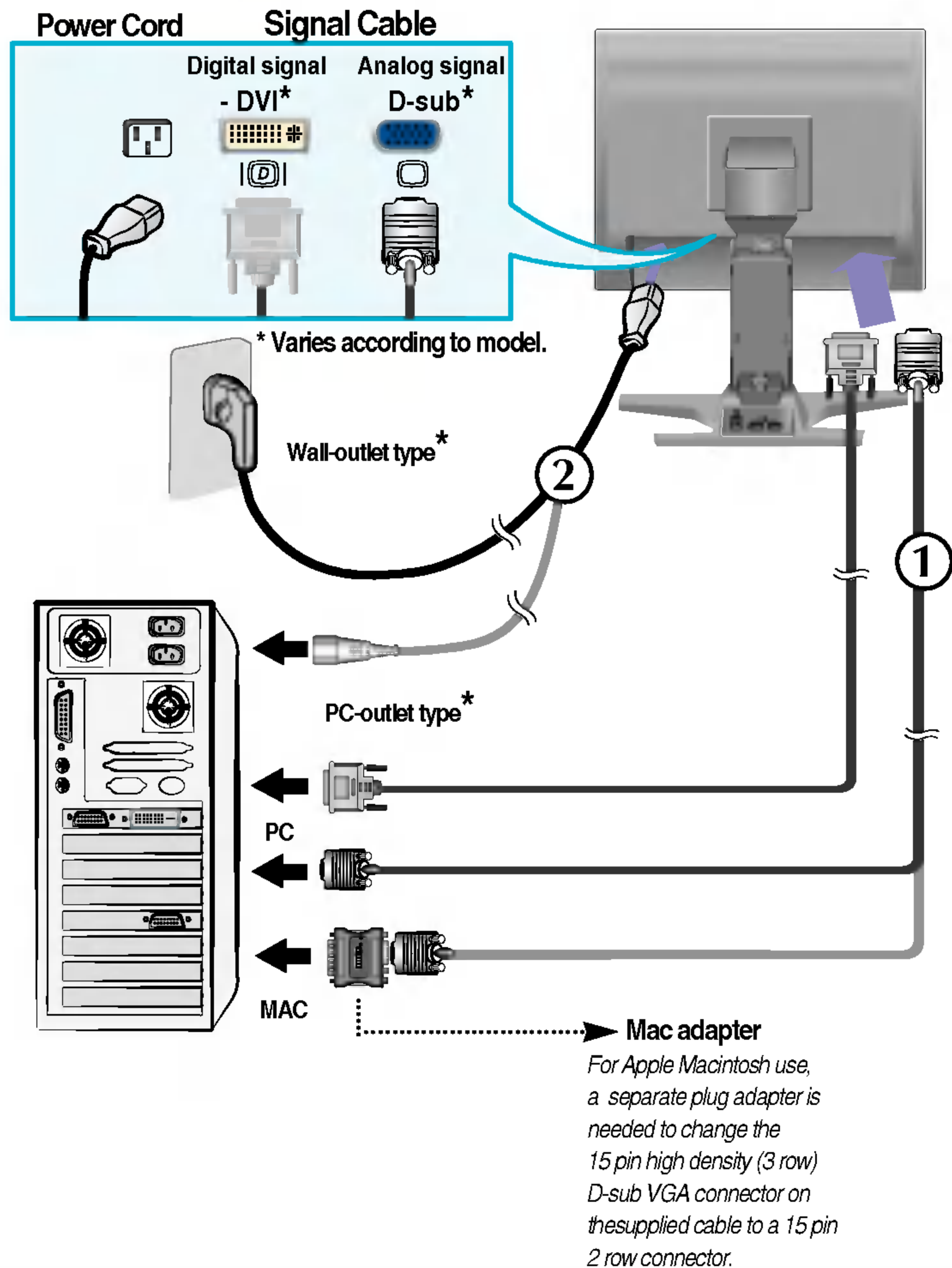
* Make sure not to touch the floor when the head rotates to use the Pivot function.

Ergonomic

It is recommended that in order to maintain an ergonomic and comfortable viewing position, the forward tilt angle of the monitor should not exceed 5 degrees.

Using the Computer

1. Place the monitor in a convenient, well-ventilated location near your computer.
To adjust height of your monitor, unlock the stand lock on top of the stand.
2. Connect the signal cable. When attached, tighten the thumbscrews to secure the connection.
3. Connect the power cord into a proper power outlet that is easily accessible and close to the display.

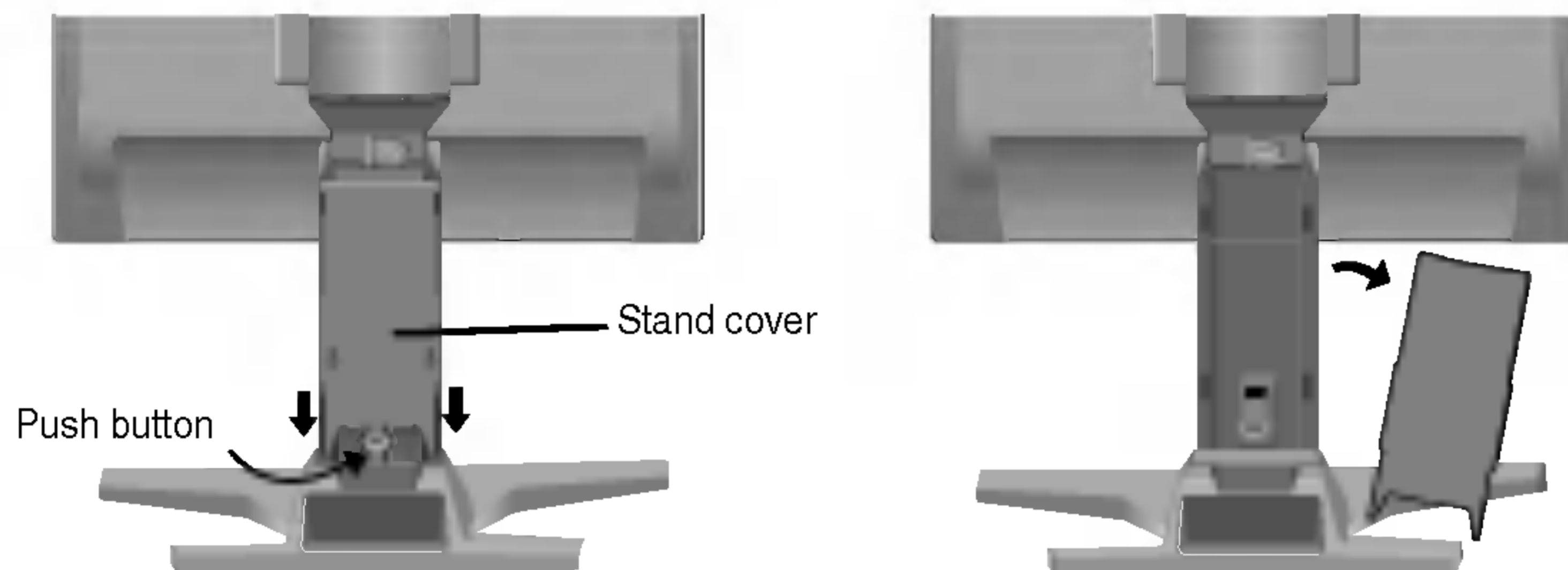


NOTE

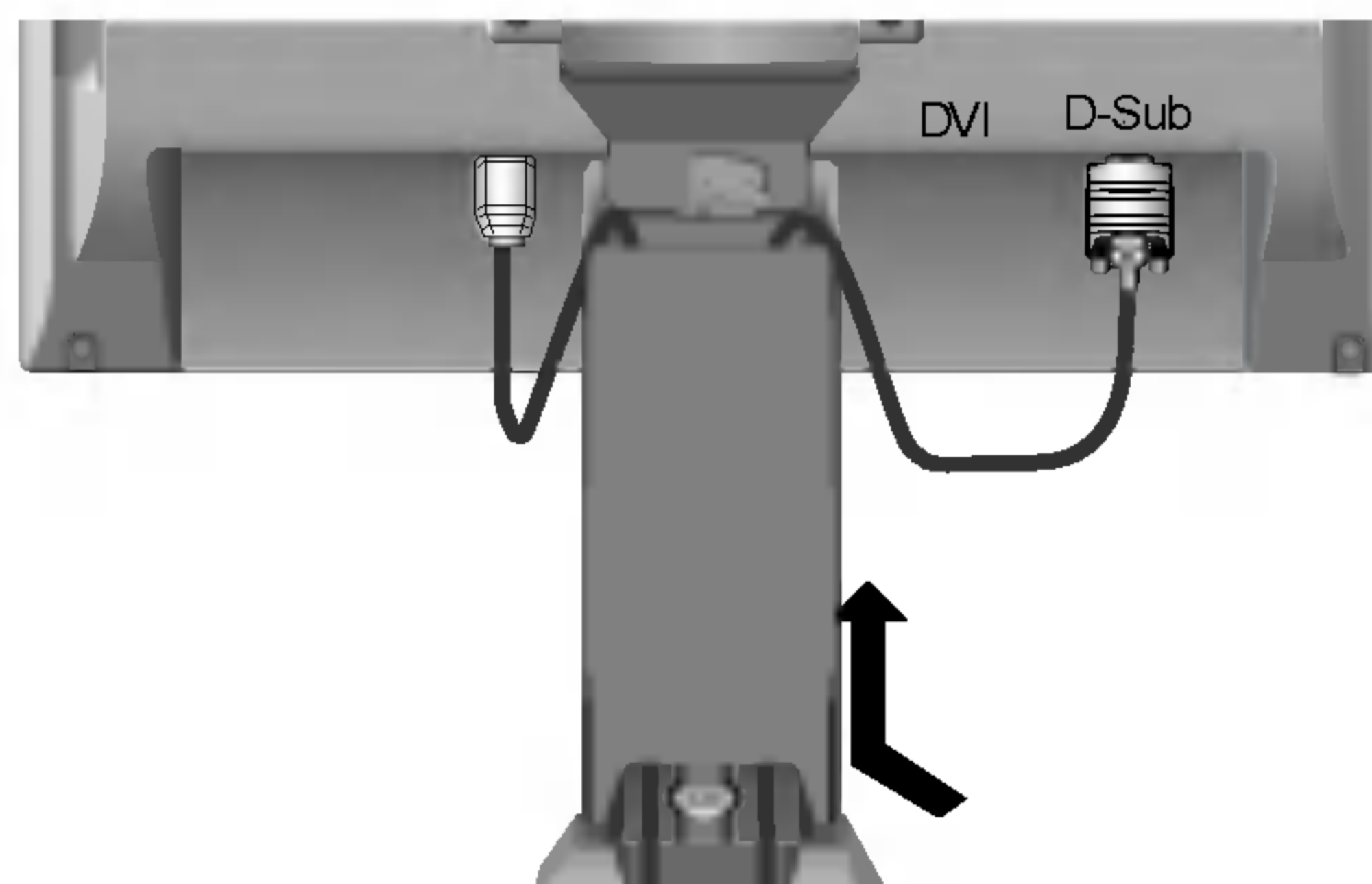
- This is a simplified representation of the rear view.
- This rear view represents a general model; your display may differ from the view as shown.

To arrange cables in order

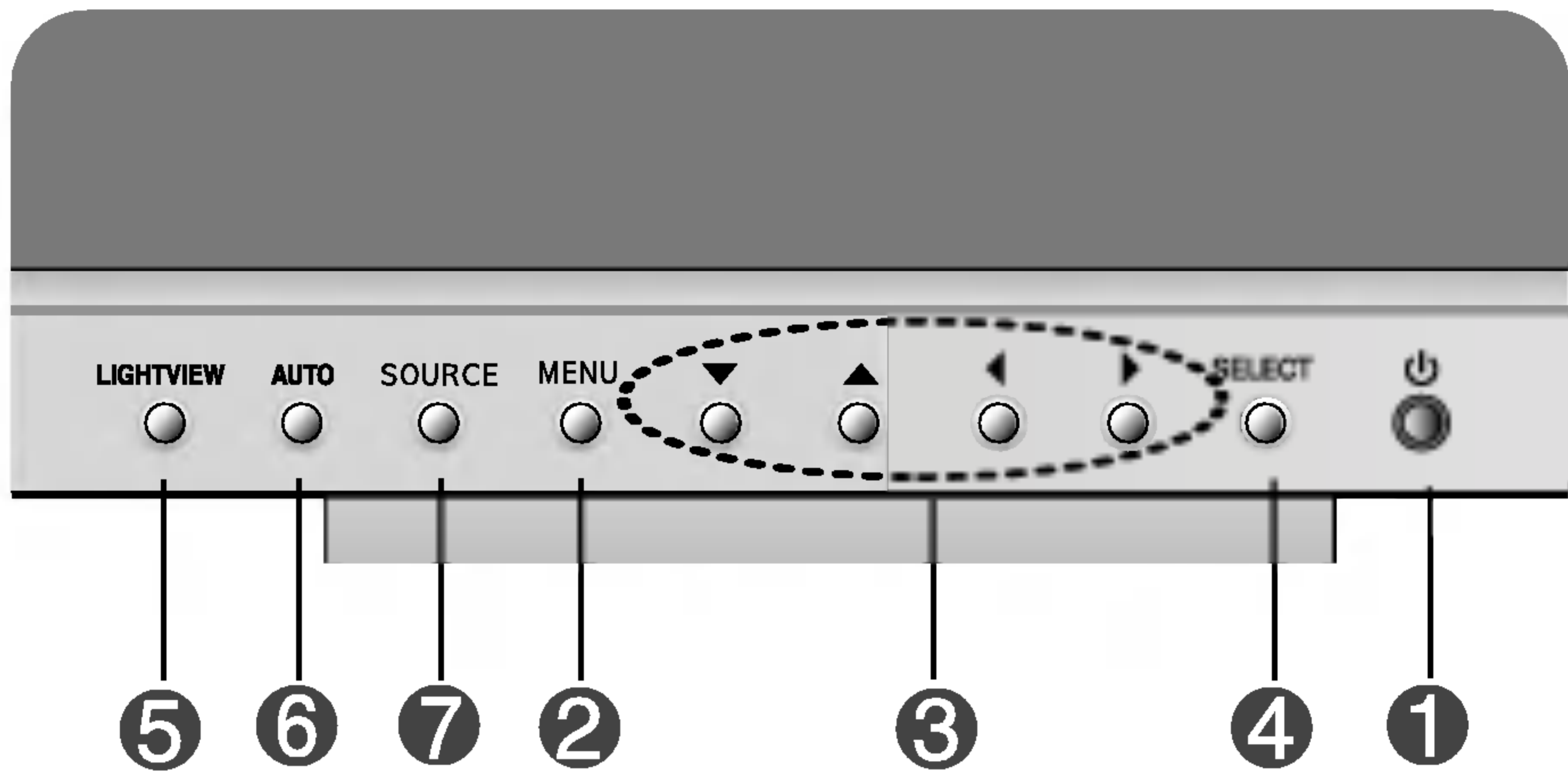
1. Press the **push button**, and pull the **stand cover** down to separate it from the stand.



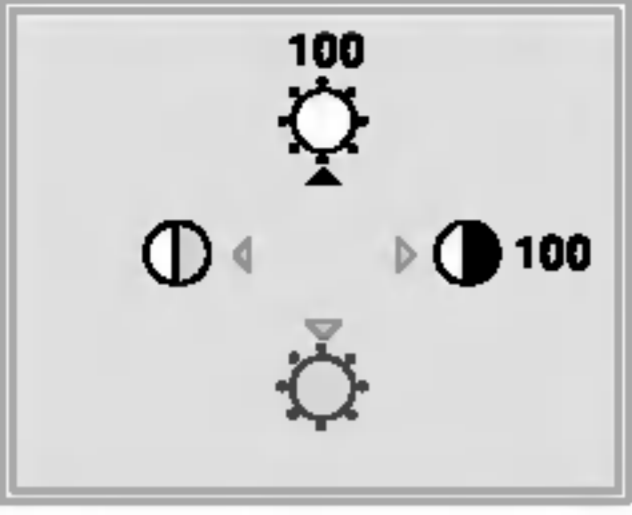




2. After connecting cables, put the **stand cover** correctly into the holes on the stand. If securely connected, you can hear the click sound from the latch.



Front Panel Controls



Control	Function
1 Power Button Power (DPMS) Indicator	Use this button to turn the display on or off. This Indicator lights up green when the display operates normally. If the display is in DPM (Energy Saving) mode, this indicator color changes to amber.
2 MENU Button	Use this button to enter or exit the On Screen Display.
3 ▼▲◀▶ Buttons	Use these buttons to choose or adjust items in the On Screen Display.
4 SELECT Button	Use this button to enter a selection in the On Screen Display.

Control	Direct Access Function
	<p>3 ▼▲◀▶</p> <p>Bring up Contrast and Brightness adjustment.</p>
	<p>5 LIGHT VIEW:</p> <p>This feature lets you easily select the best desired image condition optimized to the environment (ambient illumination, image types etc.).</p> <ul style="list-style-type: none">• DAY : Bright ambient illumination• NIGHT : Dark ambient illumination• TEXT : For text images (Word processing etc.)• MOVIE : For animation images in videos or movies• PHOTO : For pictures or drawings• USER MODE : For use under user setup image conditions (Brightness, contrast and color tint are selected by the user in OSD Screen Setup Menu.)
	<p>6 AUTO adjustment function</p> <p>When adjusting your display settings, always press the AUTO button before entering the On Screen Display(OSD). This will automatically adjust your display image to the ideal settings for the current screen resolution size (display mode). The best display mode is 1600 X 1200@60Hz.</p>
	<p>7 SOURCE Selection: SOURCE → ▼▲ → SELECT</p> <p>Use this button to make DVI DIGITAL, DVI ANALOG or DSUB ANALOG connector active. This feature is used when two computers are connected to the display. The default setting is Dsub.</p> <ul style="list-style-type: none">• DVI DIGITAL• DVI ANALOG• DSUB ANALOG
	<p>CONTROLS LOCKED/UNLOCKED: MENU and ▶</p> <p>This function allows you to secure the current control settings, so that they cannot be inadvertently changed. Press and hold the MENU button and ▶ button for 3 seconds: the message “CONTROLS LOCKED” appears. You can unlock the OSD controls at any time by pushing the MENU button and ▶ button for 3 seconds: the message “CONTROLS UNLOCKED” will appear.</p>

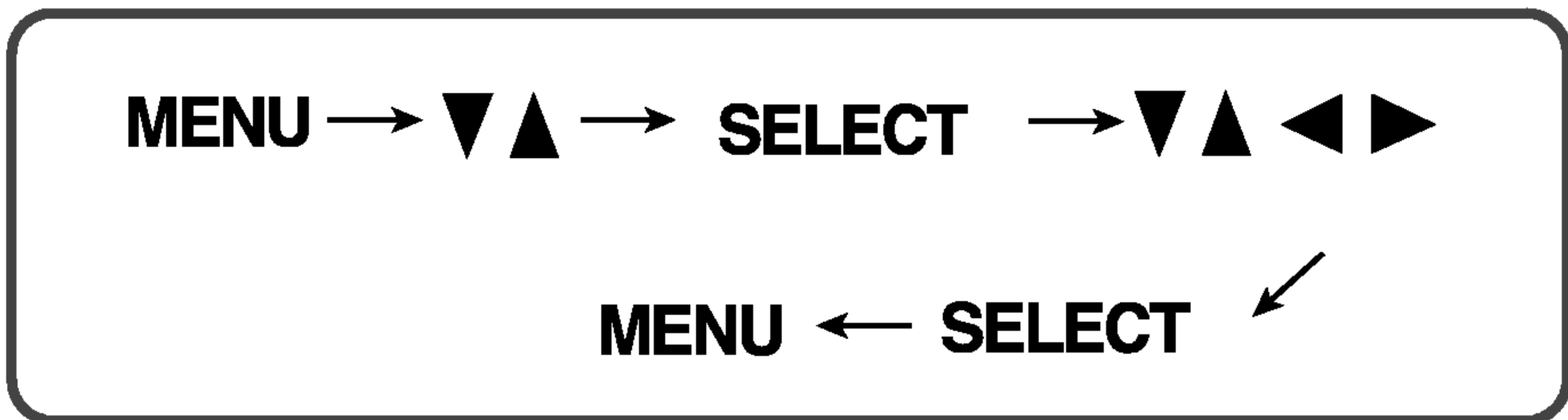
Screen Adjustment

Making adjustments to the image size, position and operating parameters of the display is quick and easy with the On Screen Display Control system. A short example is given below to familiarize you with the use of the controls. The following section is an outline of the available adjustments and selections you can make using the OSD.

NOTE

- Allow the display to stabilize for at least 30 minutes before making image adjustments.

To make adjustments in the On Screen Display, follow these steps:



- 1** Press the **MENU Button**, then the main menu of the OSD appears.
- 2** To access a control, use the **▼** or **▲** **Buttons**. When the icon you want becomes highlighted, press the **SELECT Button**.
- 3** Use the **▼ ▲ ◀ ▶** **Buttons** to adjust the item to the desired level.
- 4** Accept the changes by pressing the **SELECT Button**.
- 5** Exit the OSD by Pressing the **MENU Button**.

On Screen Display(OSD) Selection and Adjustment

The following table indicates all the On Screen Display control, adjustment, and setting menus.

Main menu	Sub menu	A	D	Reference
CONTRAST/ BRIGHTNESS	CONTRAST	●		To adjust the brightness and contrast of the screen
	BRIGHTNESS	●	●	
COLOR ADJUSTMENT	USER(R/G/B)	●		To customize the color of the screen
	9300K	●		
	6500K	●		
IMAGE POSITION	H POSITION	●		To adjust the position of the screen
	V POSITION	●		
TRACKING	AUTO	●		To improve the clarity and stability of the screen
	CLOCK	●		
	PHASE	●		
SETUP	LANGUAGE	●	●	To customize the screen status for a user's operating environment
	IMAGE SIZE	●	●	
	TRANSPARENCY	●	●	
	ZOOM	●	●	
OSD POSITION	HORIZONTAL	●	●	To adjust position of the OSD window on the screen
	VERTICAL	●	●	
<p>● : Adjustable A : Analog Input D : Digital Input</p>				

NOTE

- The order of icons may differ depending on the model (A10~A12).

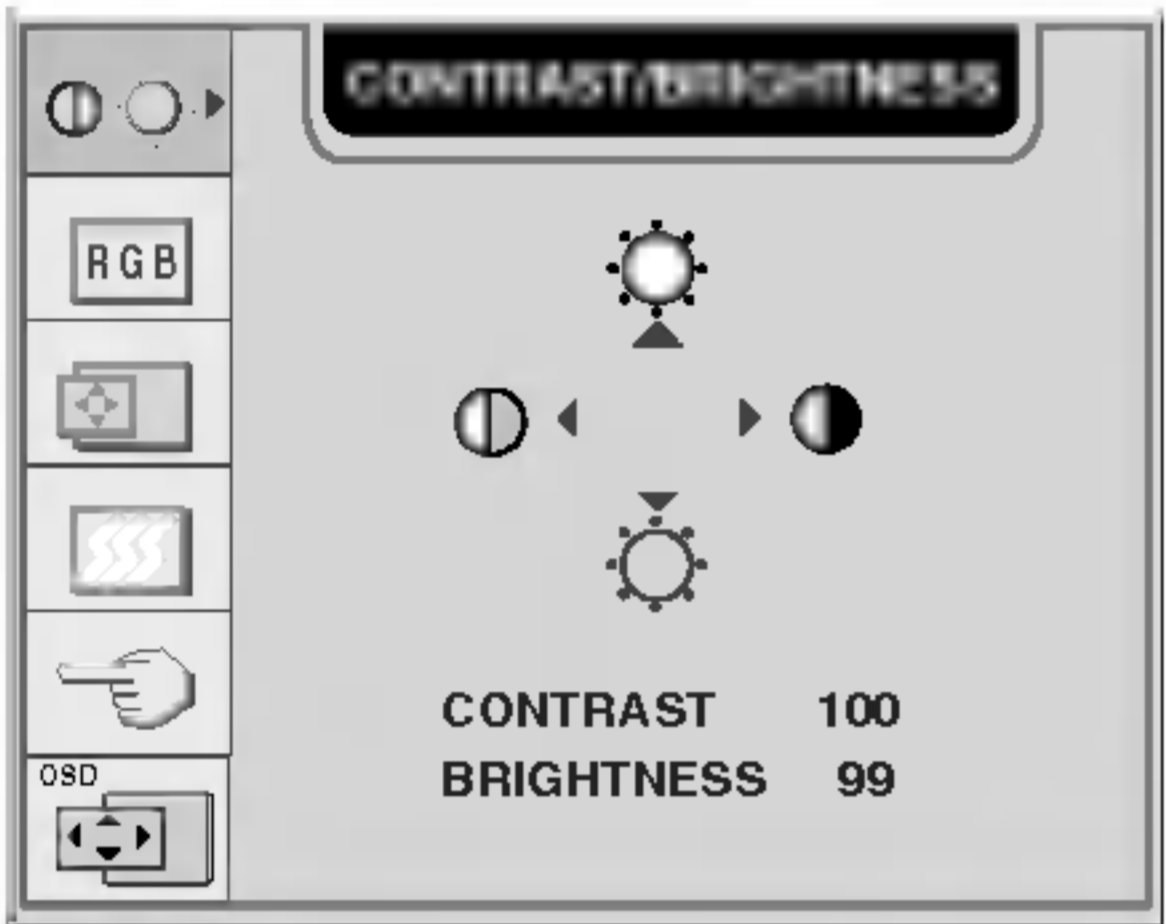


On Screen Display(OSD) Selection and Adjustment

You were introduced to the procedure of selecting and adjusting an item using the OSD system. Listed below are the icons, icon names, and icon descriptions of the all items shown on the Menu.

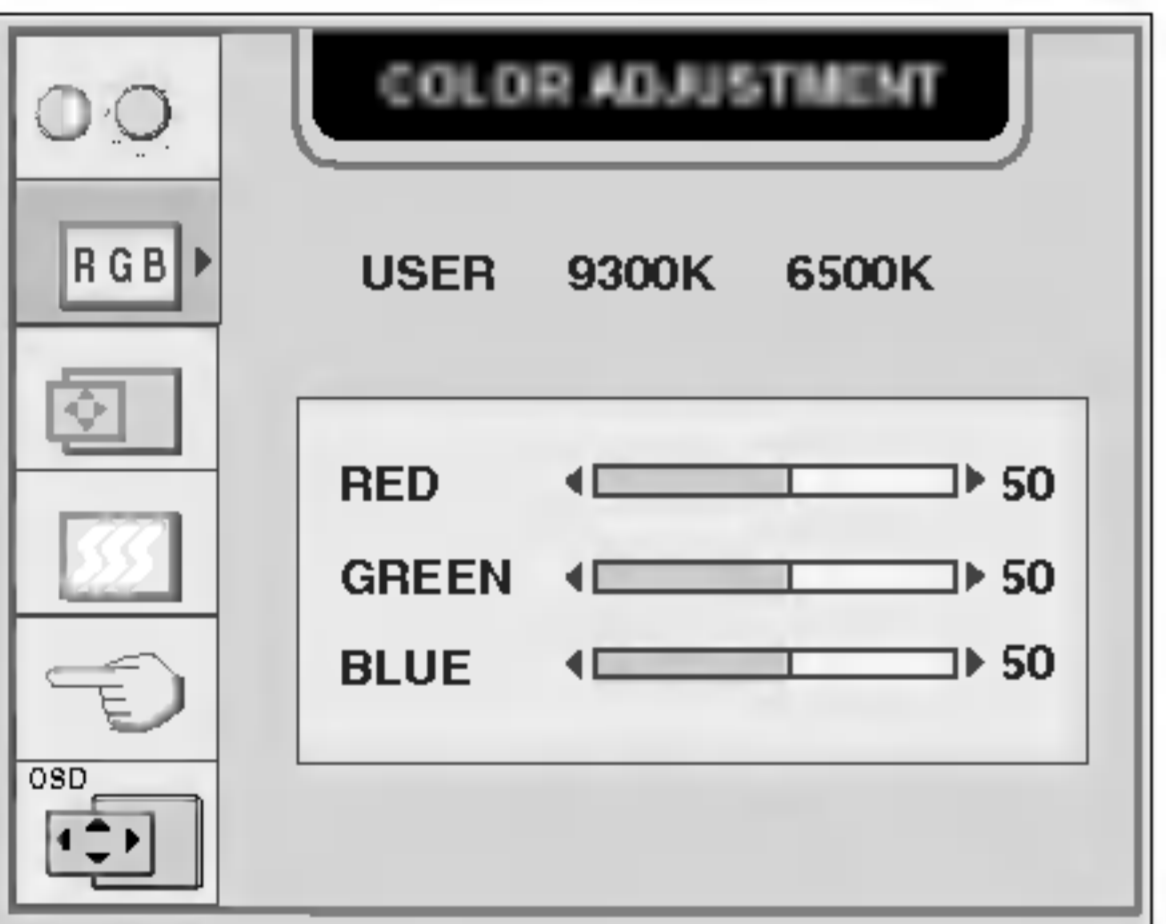
NOTE

- OSD (On Screen Display) menu languages on the monitor may differ from the manual.

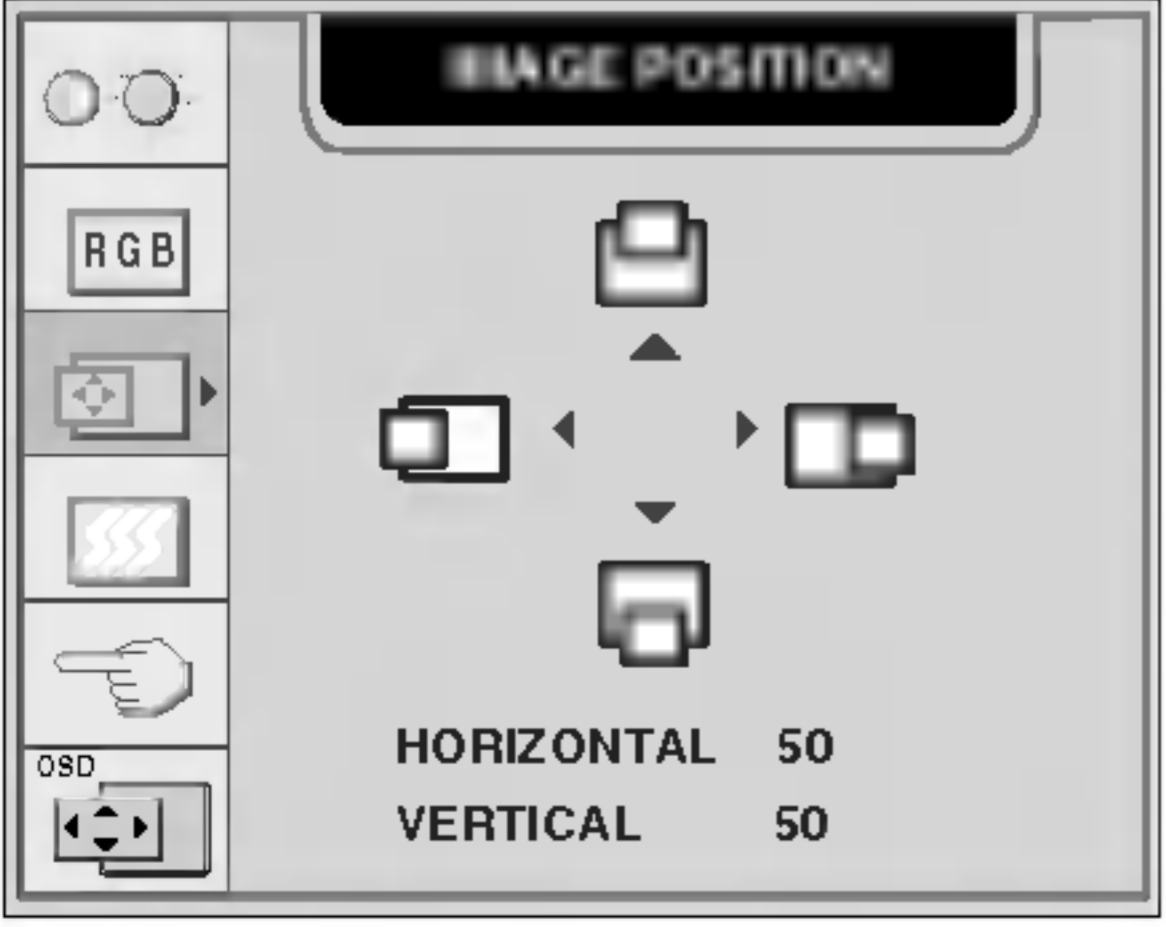


To adjust the brightness and contrast of the screen

OSD Adjust	Description
	 CONTRAST To adjust the contrast of the screen.
	 BRIGHTNESS To adjust the brightness of the screen.

To customize the color of the screen

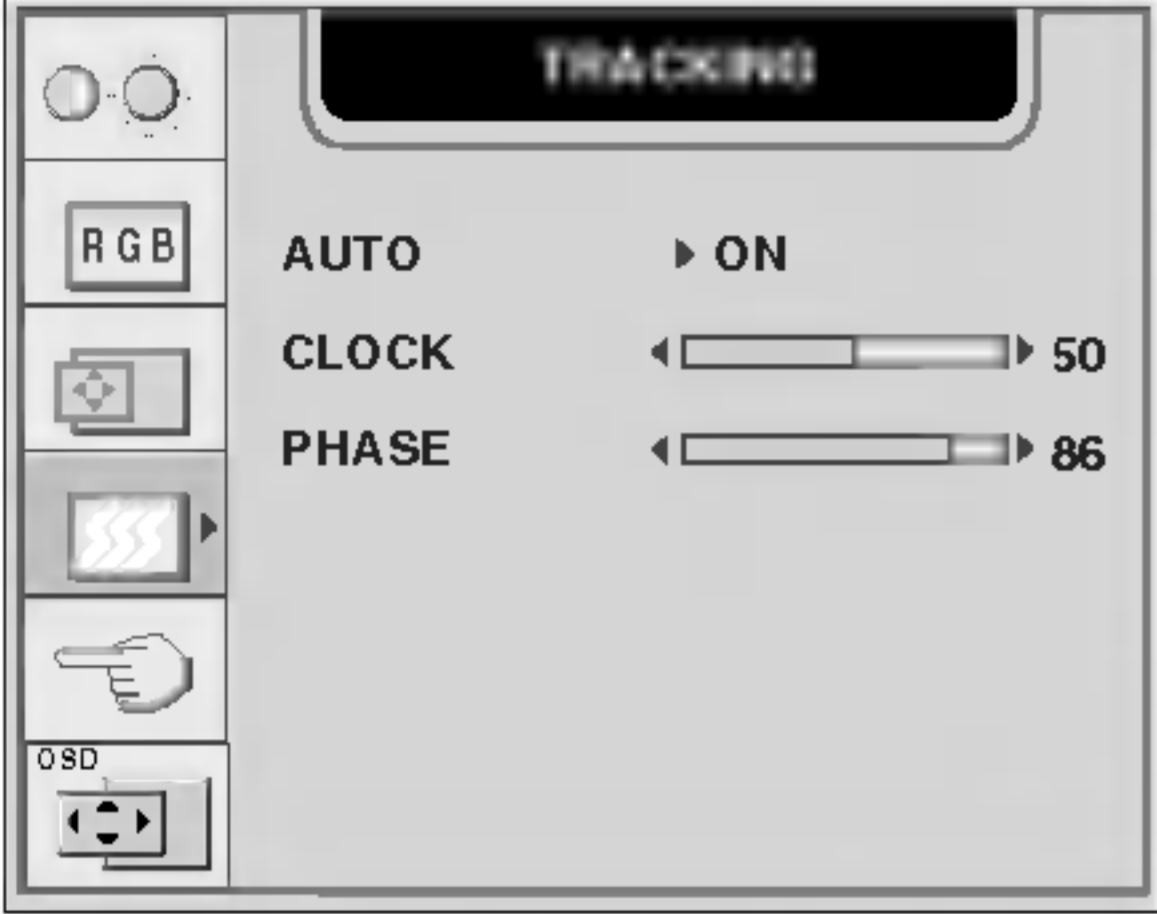
OSD Adjust	Description
	USER RED/GREEN/BLUE Set your own color levels.
	9300K 6500K Select the screen color. <ul style="list-style-type: none">9300K: Slightly bluish white.6500K: Slightly reddish white.

To adjust the position of the screen

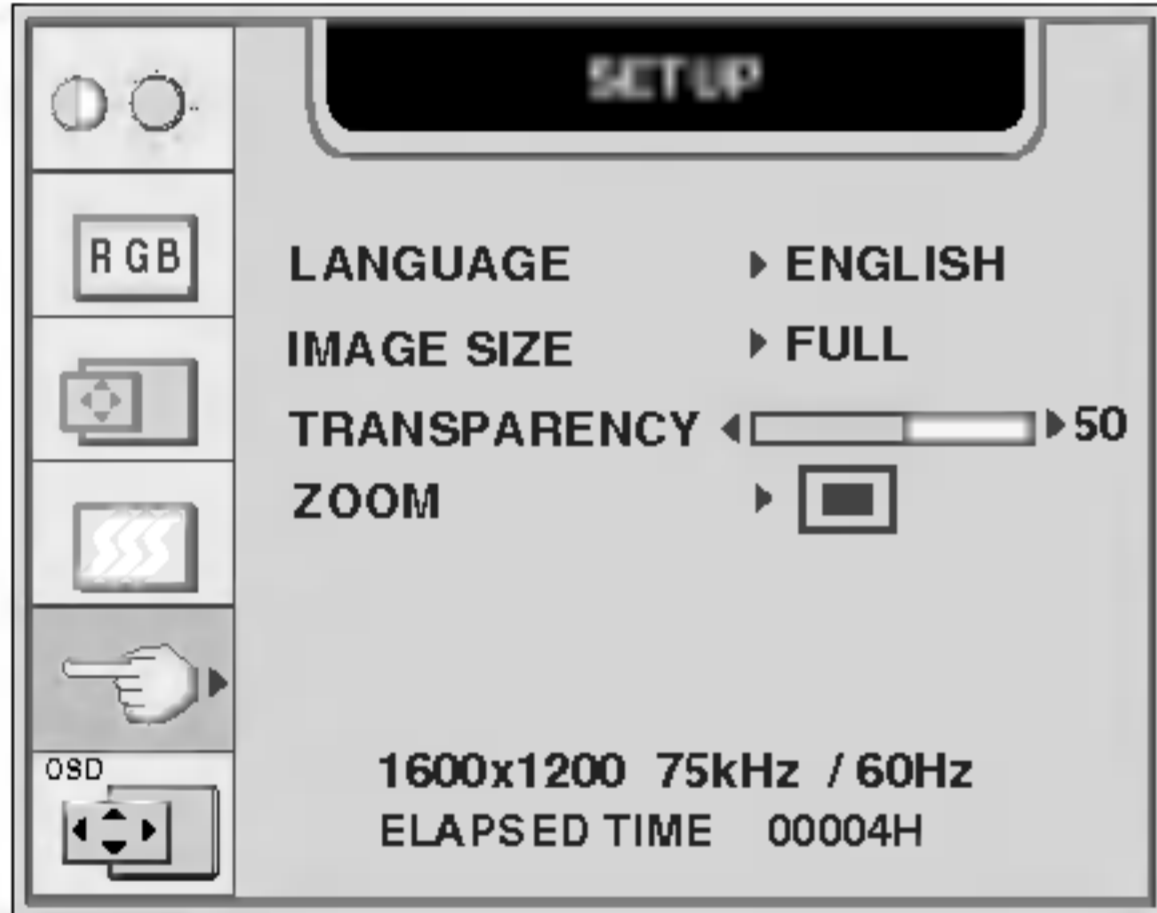
OSD Adjust	Description
	 Horizontal Position To move image left and right.
	 Vertical Position To move image up and down.

On Screen Display(OSD) Selection and Adjustment

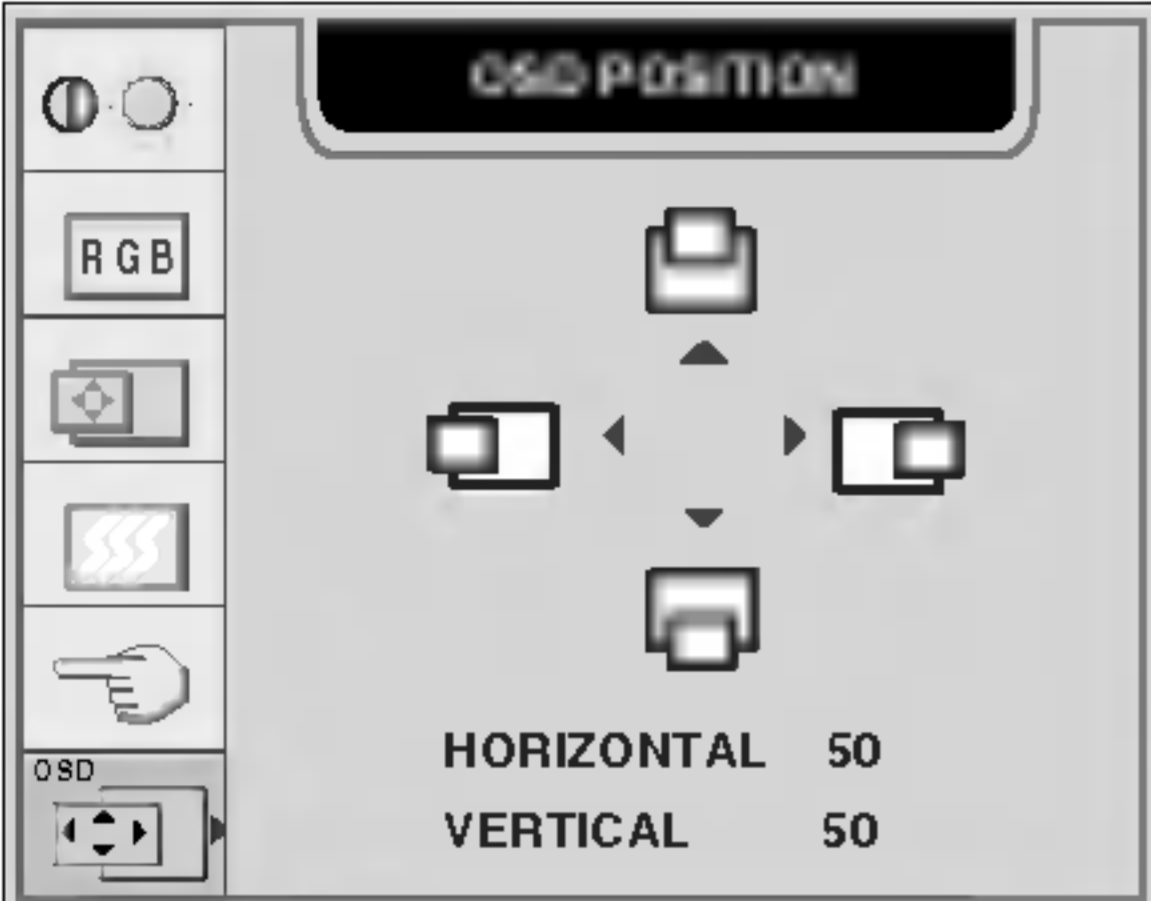
To improve the clarity and stability of the screen

OSD Adjust	Description
	<p>AUTO This function is suitable for analog signal input only. This button is for the automatic adjustment of the screen position, clock and phase.</p> <p>CLOCK To minimize any vertical bars or stripes visible on the screen background. The horizontal screen size will also change.</p> <p>PHASE To adjust the focus of the display. This item allows you to remove any horizontal noise and clear or sharpen the image of characters. Phase adjustment should be done after adjusting the Clock.</p>

To customize the screen status for a user's operating environment

OSD Adjust	Description
	<p>LANGUAGE To choose the language in which the control names are displayed.</p> <p>IMAGE SIZE This function displays the image in its original size or enlarged size so as to fit in the full screen of the LCD panel.</p> <p>TRANSPARENCY To adjust the transparency of the OSD menu screen.</p> <p>ZOOM To adjust horizontal and vertical image size simultaneously. If you want to move the zooming point, use the H/V POSITION function in the sub-menu. However, if the monitor turns off when zooming in and out the screen, the monitor will be returned to original screen.</p>

To adjust position of the OSD window on the screen

OSD Adjust	Description
 The screenshot shows the OSD POSITION menu. On the left is a vertical menu with icons for OSD, RGB, Contrast, Brightness, and OSD. The OSD icon is selected. The main area shows a central OSD window icon with four arrows pointing up, down, left, and right. Below this, the text reads 'HORIZONTAL 50' and 'VERTICAL 50'. <p>HORIZONTAL 50 VERTICAL 50</p>	<p>Horizontal Position To adjust horizontal position of the OSD window on the screen.</p> <p>Vertical Position To adjust vertical position of the OSD window on the screen.</p>

Check the following before calling for service.

No image appears	
● Is the power cord of the display connected?	<ul style="list-style-type: none">• Check and see if the power cord is connected properly to the power outlet.
● Is the power indicator light on?	<ul style="list-style-type: none">• Press the Power button.
● Is the power on and the power indicator green?	<ul style="list-style-type: none">• Adjust the brightness and the contrast.
● Is the power indicator amber?	<ul style="list-style-type: none">• If the display is in power saving mode, try moving the mouse or pressing any key on the keyboard to bring up the screen.• Make sure if the power is on.• Try to turn on the PC.
● Do you see an "OUT OF RANGE" message on the screen?	<ul style="list-style-type: none">• This message appears when the signal from the PC (video card) is out of horizontal or vertical frequency range of the display. See the 'Specifications' section of this manual and configure your display again.
● Do you see a "CHECK SIGNAL CABLE" message on the screen?	<ul style="list-style-type: none">• This message appears when the signal cable between your PC and your display is not connected. Check the signal cable and try again.

Do you see a "CONTROLS LOCKED" message on the screen.	
● Do you see "CONTROLS LOCKED" when you push MENU button?	<ul style="list-style-type: none">• You can secure the current control settings, so that they cannot be inadvertently changed. You can unlock the OSD controls at any time by pushing the MENU button and ▶ button for 3 seconds: the message "CONTROLS UNLOCKED" will appear.

Display image is incorrect

● **Display Position is incorrect.**

- Press the **AUTO** button to automatically adjust your display image to the ideal setting. If the results are unsatisfactory, adjust the image position using the **H position and V position** icon in the on screen display.
- Check **Control Panel --> Display --> Settings** and see if the frequency or the resolution were changed. If yes, readjust the video card to the recommend resolution.

● **On the screen background, vertical bars or stripes are visible.**

- Press the **AUTO** button to automatically adjust your display image to the ideal setting. If the results are unsatisfactory, decrease the vertical bars or stripes using the **CLOCK** icon in the on screen display.

● **Any horizontal noise appearing in any image or characters are not clearly portrayed.**

- Press the **AUTO** button to automatically adjust your display image to the ideal setting. If the results are unsatisfactory, decrease the horizontal bars using the **PHASE** icon in the on screen display.
- Check **Control Panel --> Display --> Settings** and adjust the display to the recommended resolution or adjust the display image to the ideal setting. Set the color setting higher than 24 bits (true color).

● **The screen color is mono or abnormal.**

- Check if the signal cable is properly connected and use a screwdriver to fasten if necessary.
- Make sure the video card is properly inserted in the slot.
- Set the color setting higher than 24 bits (true color) at **Control Panel - Settings**.

● **The screen blinks.**

- Check if the screen is set to interlace mode and if yes, change it to the recommend resolution.
- Make sure the power voltage is high enough, It has to be hgher than **AC100-240V 50/60Hz**.

"IMAGE SIZE" function on OSD menu does not work.

● **"IMAGE SIZE" function on OSD menu does not work?**

- Check if the resolution is set as 1600x1200 or less than 512x360.
The optimal resolution is 1600x1200 and the image is fully displayed on the monitor and is not converted as 1:1 image size. If the resolution is less than 512x360, the image size is smaller than that of the OSD's and is also not converted as 1:1 image size.

Have you installed the display driver?

● **Have you installed the display driver?**

- Be sure to install the display driver from the display driver CD (or diskette) that comes with your display. Or, you can also download the driver from our web site: <http://www.lge.com>.

● **Do you see an "Unrecognized monitor, Plug&Play (VESA DDC) monitor found" message?**

- Make sure to check if the video card supports Plug&Play function.

USB function

● **USB function cannot be setup.**

- Check if the USB cable is correctly connected.
- Check if the PC and OS are USB compliant. For verification of USB support, consult the manufacturer of each system.

Specifications

Display	20.1 inches (51.0cm) Flat Panel Active matrix-TFT LCD Anti-Glare coating 20.1 inches viewable 0.255mm pixel pitch	
Sync Input	Horizontal Freq.	Analog : 28 - 92kHz (Automatic) Digital : 28-80kHz (Automatic)
	Vertical Freq.	56 - 85Hz (Automatic)
	Input Form	Separate TTL, Positive/Negative Composite TTL Positive/Negative SOG (Sync On Green) Digital
Video Input	Signal Input	15 pin D-Sub Connector DVI - I connector (Digital/Analog)
	Input Form	RGB Analog (0.7Vp-p/75ohm), Digital
Resolution	Max	D-Sub : Analog - VESA 1600 x 1200@60Hz DVI : Analog - VESA 1600 x 1200@60Hz Digital - VESA 1600 x 1200@60Hz VESA 1280 x 1024@70Hz
	Recommend	VESA 1600 x 1200@60Hz
Plug&Play	DDC 2B	
Power Consumption	Normal	: 60W
	Stand-by/Suspend	≤ 3W
	DPM Off	≤ 3W
	Power key Off	≤ 3W
	Power Cut-off switch off	≤ 1W
	*() : with USB	
Dimensions & Weight (with tilt/ swivel stand)	Width	44.6 0cm / 17.56 inches
	Height	44.56 cm / 17.54 inches(Min) 52.56cm / 20.69 inches(Max)
	Depth	23.73cm / 9.34 inches
	Net	9.5 kg
Tilt/Swivel Range	Tilt range	-5°~30°
	Swivel range	90°
	Height range	80/ 3.15 inches
	Rotate	90°clockwise(Landscape -> Portrait)
Power Input	AC 100-240V ~ 50/60Hz 1.2A	
Environmental Conditions	Operating Conditions	
	Temperature	10°C to 35 °C
	Humidity	10 % to 80 % non-Condensing
	Storage Conditions	
	Temperature	-20°C to 60 °C
Humidity	5 % to 95 % non-Condensing	

Specifications

Tilt/Swivel Stand	Attached(O), Detached ()
Signal cable	Attached(), Detached (O)
Power cord	Wall-outlet type or PC-outlet type

NOTE

- Information in this document is subject to change without notice.

Preset Modes (Resolution)

	Display Modes (Resolution)	Horizontal Freq. (kHz)	Vertical Freq. (Hz)
1	640 x 350	31.47	70
2	640 x 480	31.47	60
3	640 x 480	37.50	75
4	640 x 480	43.27	85
5	720 x 400	31.47	70
6	800 x 600	37.88	60
7	800 x 600	46.88	75
8	800 x 600	53.67	85
9	832 x 624	49.72	75
10	1024 x 768	48.36	60
11	1024 x 768	60.02	75
12	1024 x 768	68.68	85
13	1152 x 870	68.68	75
14	1152 x 900	61.80	65.96
15	1280 x 1024	63.98	60.02
16	1280 x 1024	79.98	75.02
17	1600 x 1024	62.11	60
18	1600 x 1200	75.00	60

Indicator

MODE	LED Color
Normal	green
Stand-by/Suspend	amber
DPMS Off	amber

VESA wall mounting

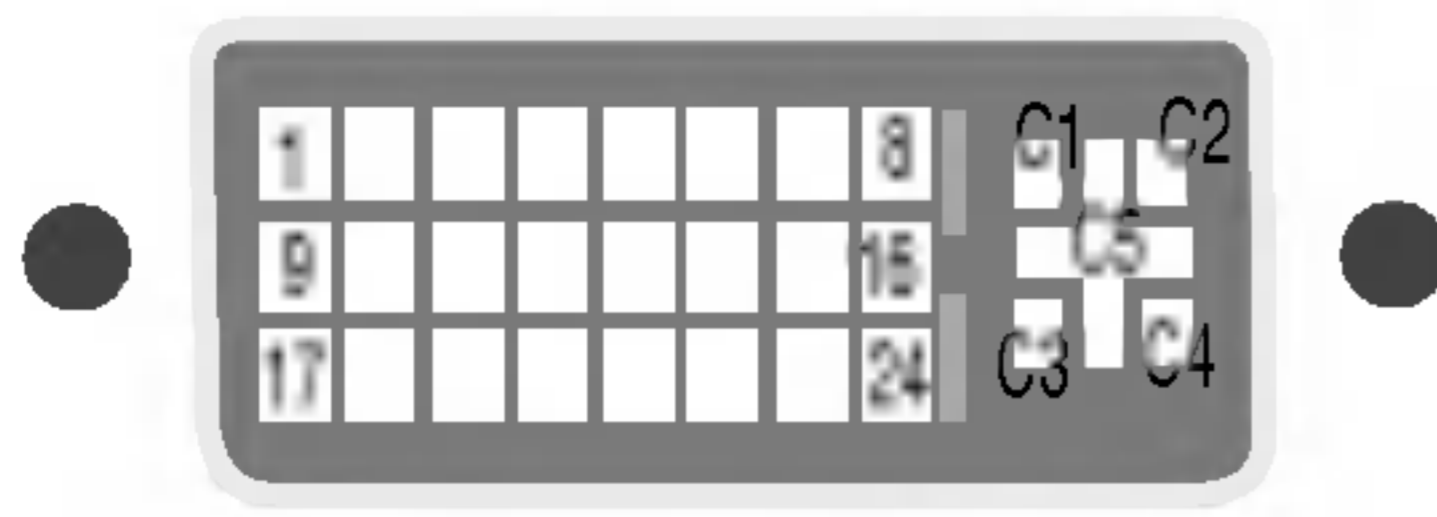
Connected to another object (stand type and wall-mounted type. This monitor accepts a VESA-compliant mounting interface pad.- **optional**)
For further information, refer to the VESA Wall Mounting Instruction Guide.



Kensington Security Slot- optional

Connected to a locking cable that can be purchased separately at most computer stores

Signal Connector Pin Assignment



■ DVI-I Connector

Pin	Signal(DVI-I)
1	T. M. D. S. Data2-
2	T. M. D. S. Data2+
3	T. M. D. S. Data2/4 Shield
4	T. M. D. S. Data4-
5	T. M. D. S. Data4+
6	DDC Clock
7	DDC Data
8	Analog Vertical Sync.
9	T. M. D. S. Data1-
10	T. M. D. S. Data1+
11	T. M. D. S. Data1/3 Shield
12	T. M. D. S. Data3-
13	T. M. D. S. Data3+
14	+5V Power
15	Ground (return for +5V, H. Sync. and V. Sync.)

Pin	Signal(DVI-I)
16	Hot Plug Detect
17	T. M. D. S. Data0-
18	T. M. D. S. Data0+
19	T. M. D. S. Data0/5 Shield
20	T. M. D. S. Data5-
21	T. M. D. S. Data5+
22	T. M. D. S. Clock Shield
23	T. M. D. S. Clock+
24	T. M. D. S. Clock-
C1	Analog Red
C2	Analog Green
C3	Analog Blue
C4	Analog H. Sync.
C5	Analog Ground

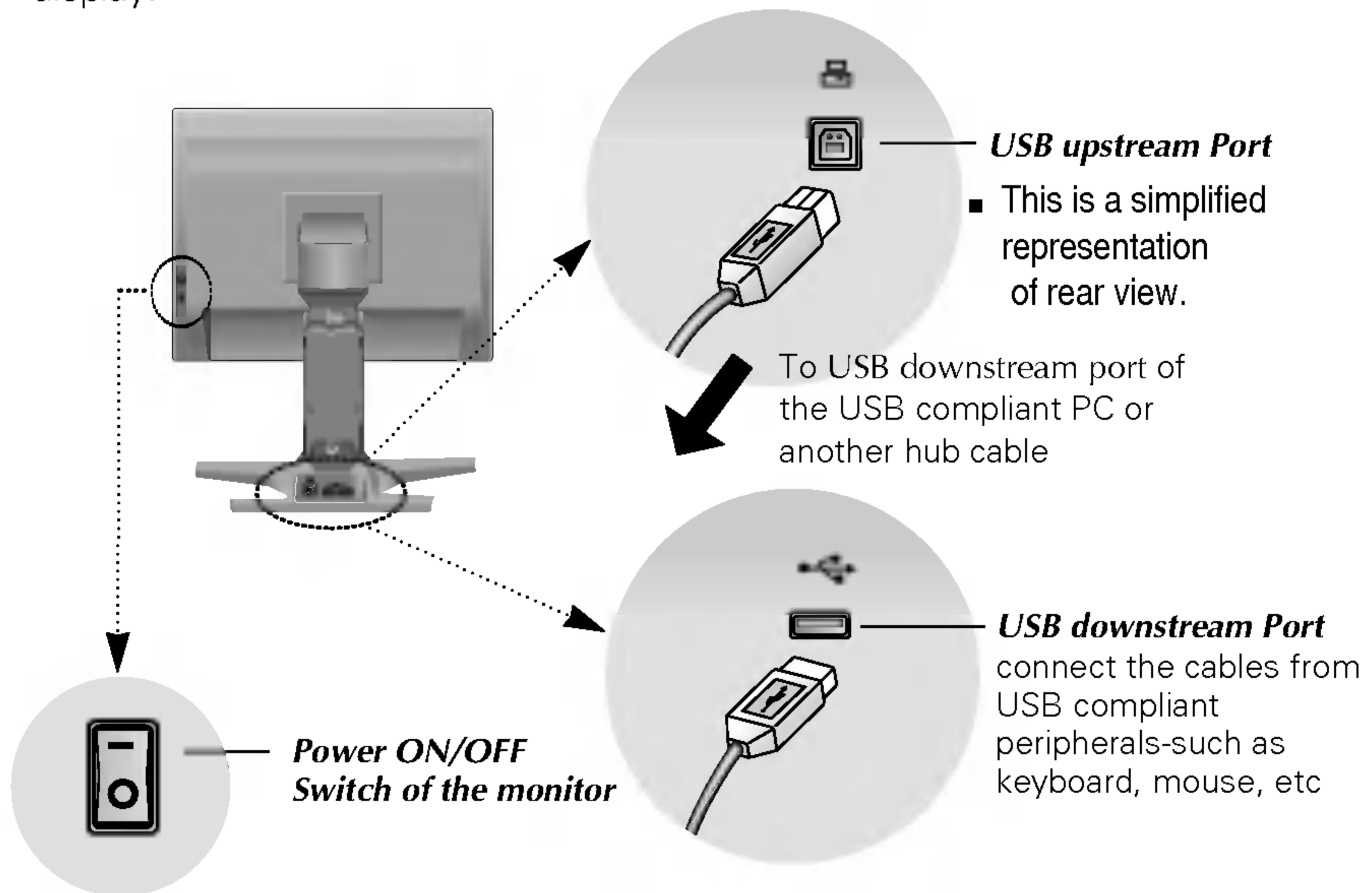
T. M. D. S. (Transition Minimized Differential Signaling)

Making use of USB (Universal Serial Bus) - Optional

USB (Universal Serial Bus) is an innovation in connecting your different desktop peripherals conveniently to your computer. By using the USB, you will be able to connect your mouse, keyboard, and other peripherals to your display instead of having to connect them to your computer. This will give you greater flexibility in setting up your system. USB allows you to connect a chain of up to 120 devices on a single USB port; and you can “hot” plug (attach them while the computer is running) or unplug them while maintaining the Plug and the Plug auto detection and configuration. This display has an integrated BUS-powered USB hub, allowing up to 2 other USB devices to be attached it.

USB connection

1. Connect the upstream port of the display to the downstream port of the USB compliant PC or another hub using the USB cable. (Computer must have a USB port)
2. Connect the USB compliant peripherals to the downstream ports of the display.



NOTE

- To activate the USB hub function, the display must be connected to a USB compliant PC(OS) or another hub with the USB cable(enclosed).
- When connecting the USB cable, check that the shape of the connector at the cable side matches the shape at the connecting side.
- Even if the display is in a power saving mode, USB compliant devices will function when they are connected the USB ports(both the upstream and downstream) of the display.

USB Specifications

USB standard	Rev. 1.1 complied BUS-powered hub
Downstream power supply	500mA for each (MAX)
Communication speed	12 Mbps (full), 1.5 Mbps (low)
USB port	1 Upstream port 2 Downstream ports

IMPORTANT: These USB connectors are not designed for use with high-power USB devices such as a video camera, scanner, etc. LGE recommends connecting high-power USB devices directly to the computer

