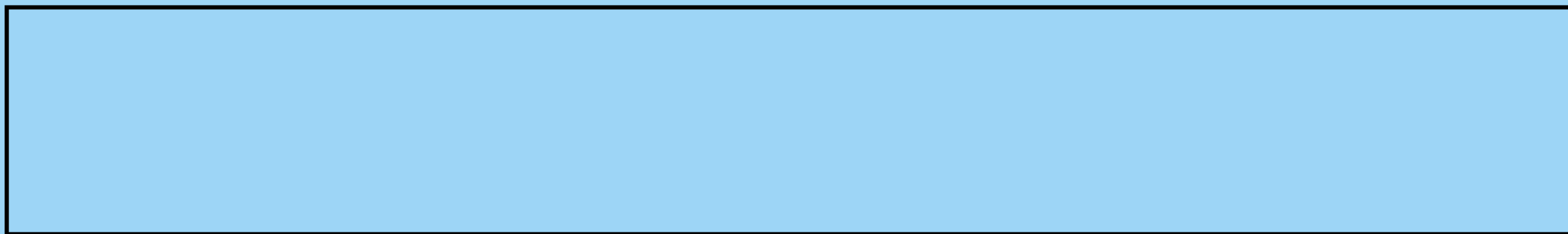


OWNER'S MANUAL

V-CC172HT**

V-CC172NT**

Bagless vacuum cleaner



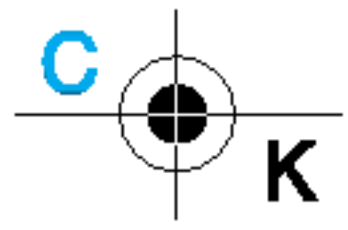


Table of contents

| | |
|--|----|
| Information for Your Safety | 3 |
| How to Use | 4 |
| Assembling the Cleaner | 4 |
| Using the Cleaning head and Accessory Nozzles..... | 6 |
| Emptying the Dust Tank | 8 |
| Operation..... | 9 |
| ① How to Plug in and Use | 9 |
| ② Adjusting the Suction power | 9 |
| ③ Park-System..... | 9 |
| ④ Storage | 9 |
| Cleaning the Air Filter and the Dust Tank..... | 10 |
| Cleaning the Exhaust Filter | 11 |
| What to Do if your Vacuum Cleaner Does Not Work | 12 |
| What to Do When Suction Performance Decreases | 12 |

Information for Your Safety

Please read all the following information, which contains important instructions for the safety, the use and the maintenance of the appliance.

This appliance complies with the following EC Directives: -73/23/EEC, 93/68/EEC-Low Voltage Directive-89/336EEC -EMC Directive.

- Never allow children to use the appliance unsupervised.
- Do not use the vacuum as a toy, injury could result.
- Do not continue to vacuum if any defect appears, missing or damaged.
In these cases, contact an approved LG Electronics Service Agent.
- Repairs, when necessary, must be performed at an approved LG Electronics Service Agent.
- Only use parts produced or recommended by LG doing otherwise could invalidate your guarantee.
- Do not use without the dust tank or air filter.
- Do not use the vacuum cleaner if the power cord is damaged or faulty.
- If the power cord is damaged, it must be replaced by an approved LG Electronics Service Agent to avoid a hazard.
- Do not unplug by pulling on cord.
- Do not pull on the supply cord, run over it, pull it around sharp edges or near/over hot surfaces.
- Always turn the vacuum cleaner off before:
 - Emptying the dust tank.
 - Cleaning or changing the filter.
 - Removing from the mains outlet.
- Do not leave vacuum cleaner with the plug connected to a mains outlet-unplug when not in use.
- Do not use the vacuum with any of the openings blocked with any object that may restrict the airflow.
- Do not put any part of the body, clothes or any object (e.g. stick) into the opening or moving parts of the cleaner.
- Do not use outdoors.
- Do not vacuum hot ash, embers etc. or sharp objects.
- Do not vacuum flammable or explosive substances(liquids or gases).
- Do not vacuum water or other liquids.
- Do not handle the cleaner or plug with wet hands.
- Do not immerse the whole cleaner in water.
- Do not use vacuum cleaner without repair if it was under water.
- When you vacuum with an attachment appliance that has a rotating brush roller:
 - Do not reach into the running brush roller.
- The appliance is not intended for use by young children or infirm persons without supervision.
 - Young children should be supervised to ensure that they do not play with the appliance.

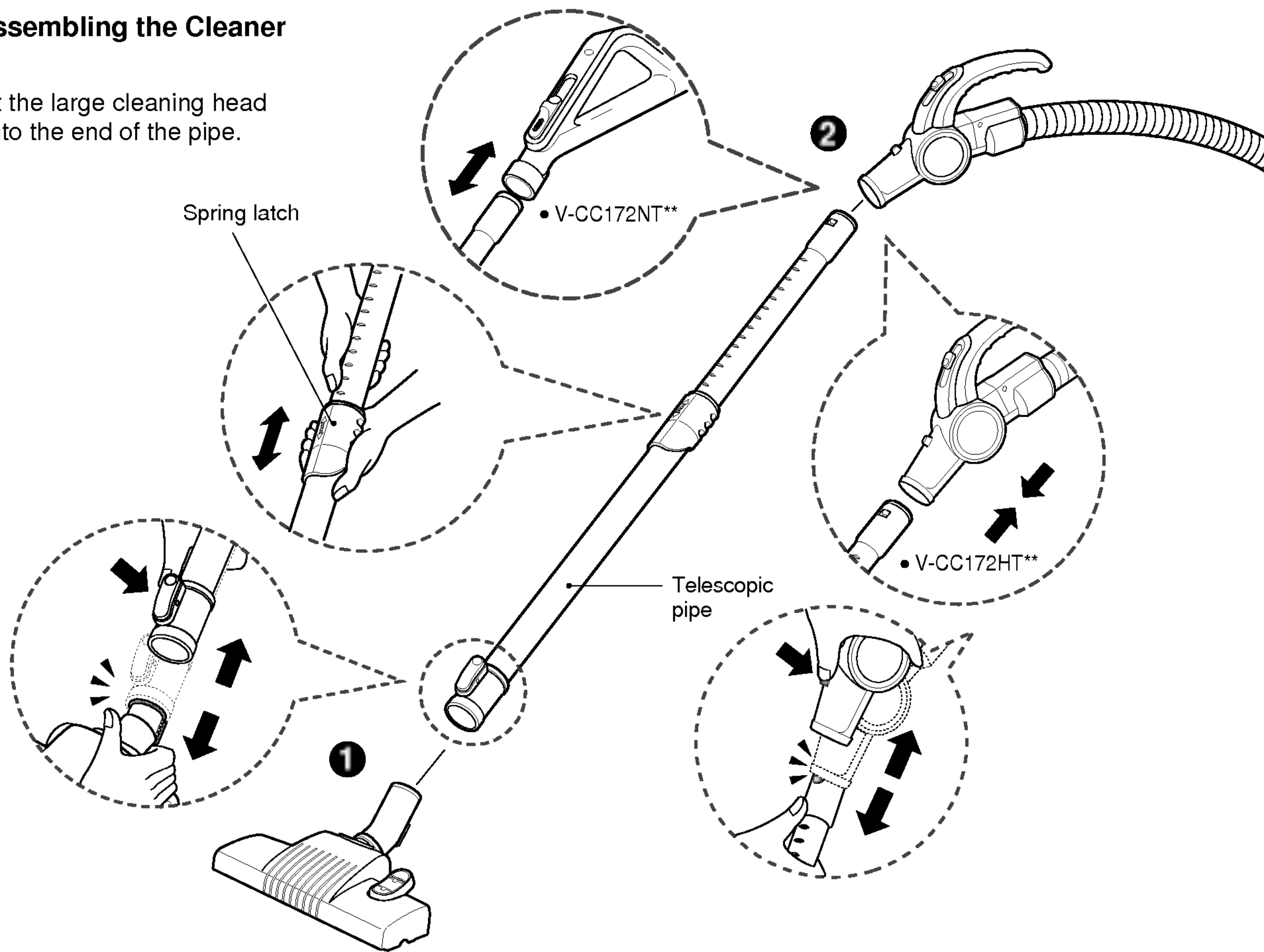
Thermal protector: This vacuum cleaner has a special thermostat that protects the cleaner in case of motor overheating. If the cleaner suddenly shuts off, turn off the switch and unplug the cleaner. Check the cleaner for a possible source of overheating such as a full dust tank, a blocked hose or clogged filter. If these conditions are found, fix them and wait at least 30 minutes before attempting to use the cleaner. After the 30 minutes period, plug the cleaner back in and turn on the switch. If the cleaner still does not run, contact a qualified electrician.



How to Use

Assembling the Cleaner

Fit the large cleaning head onto the end of the pipe.

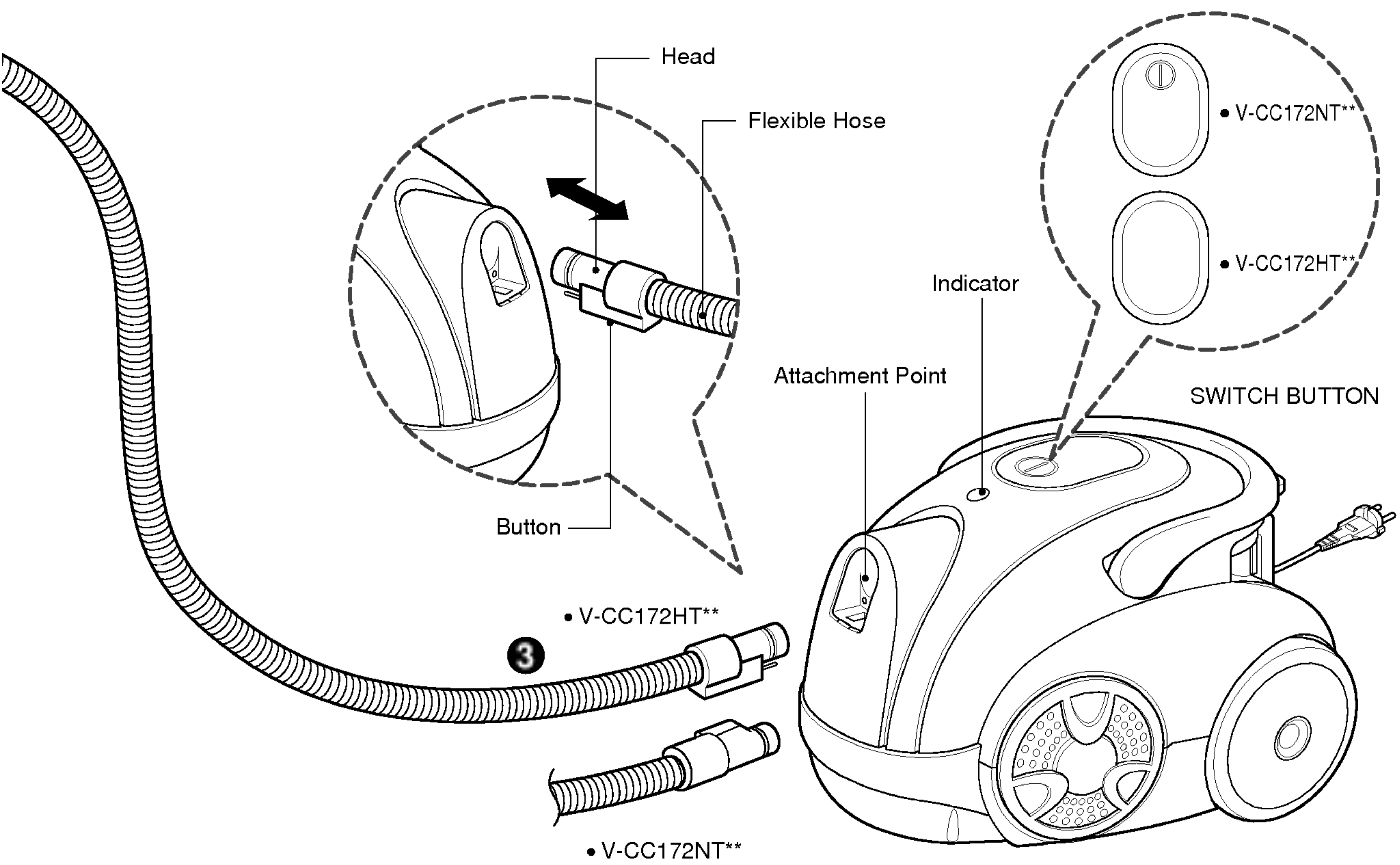


1 Large cleaning head

Push the head onto the telescopic pipe.

2 Telescopic pipe

- Press the spring latch to release.
- Pull out the pipe to the desired length.
- Release spring latch to lock the pipe in position.
- Push telescopic pipe into hose handle firmly.

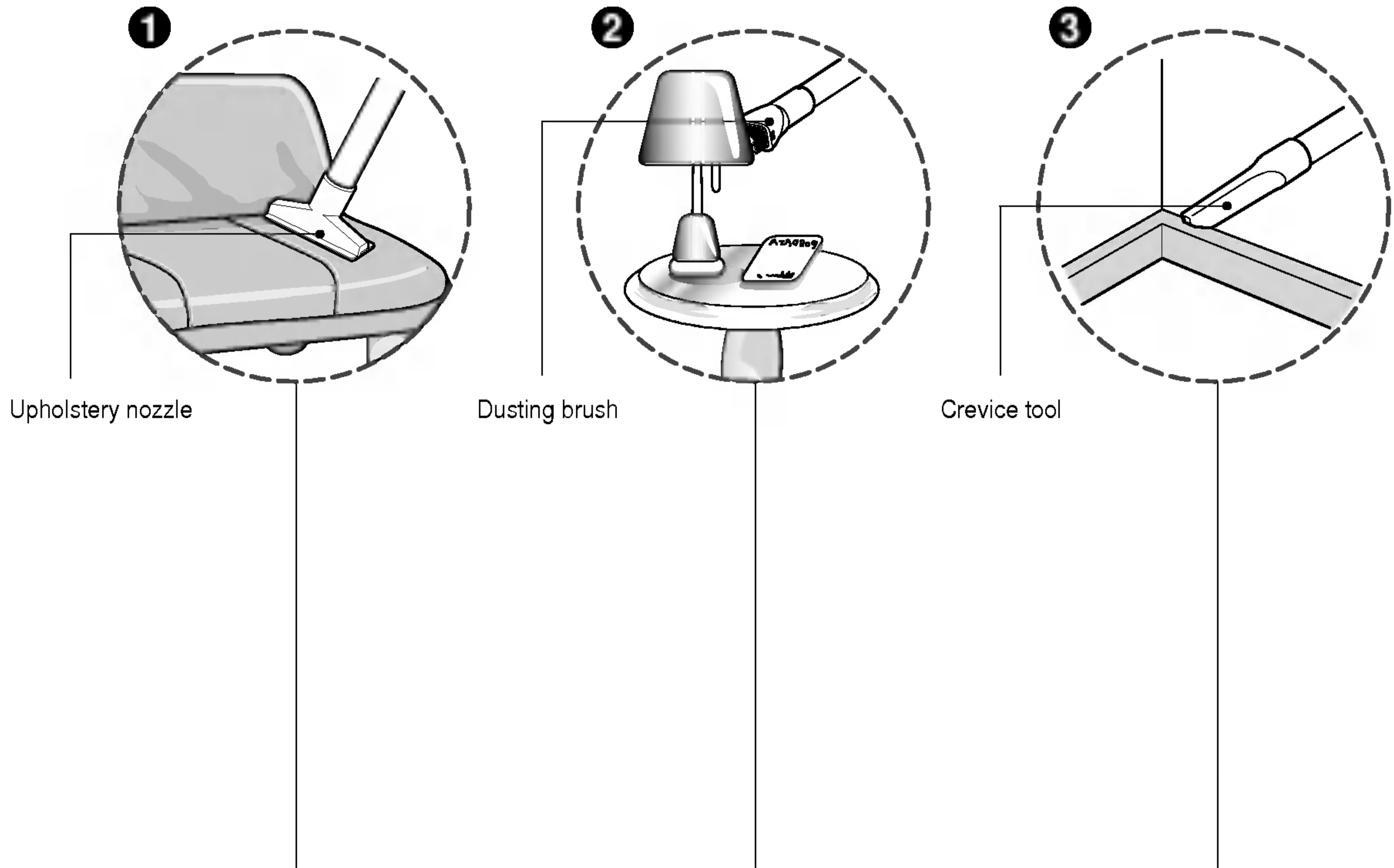


3 Connecting the hose to the cleaner

Push the end of the head on the flexible hose into the attachment point on the vacuum cleaner. To remove the flexible hose from the vacuum cleaner, press on the button situated on the head, then pull the head out of the vacuum cleaner.

How to Use

Using the Cleaning head and Accessory Nozzles



Upholstery nozzle

Dusting brush

Crevice tool

① Upholstery Nozzle

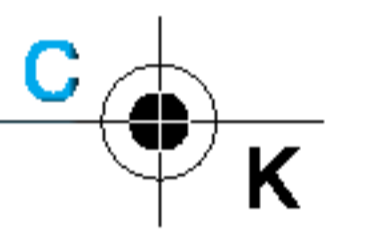
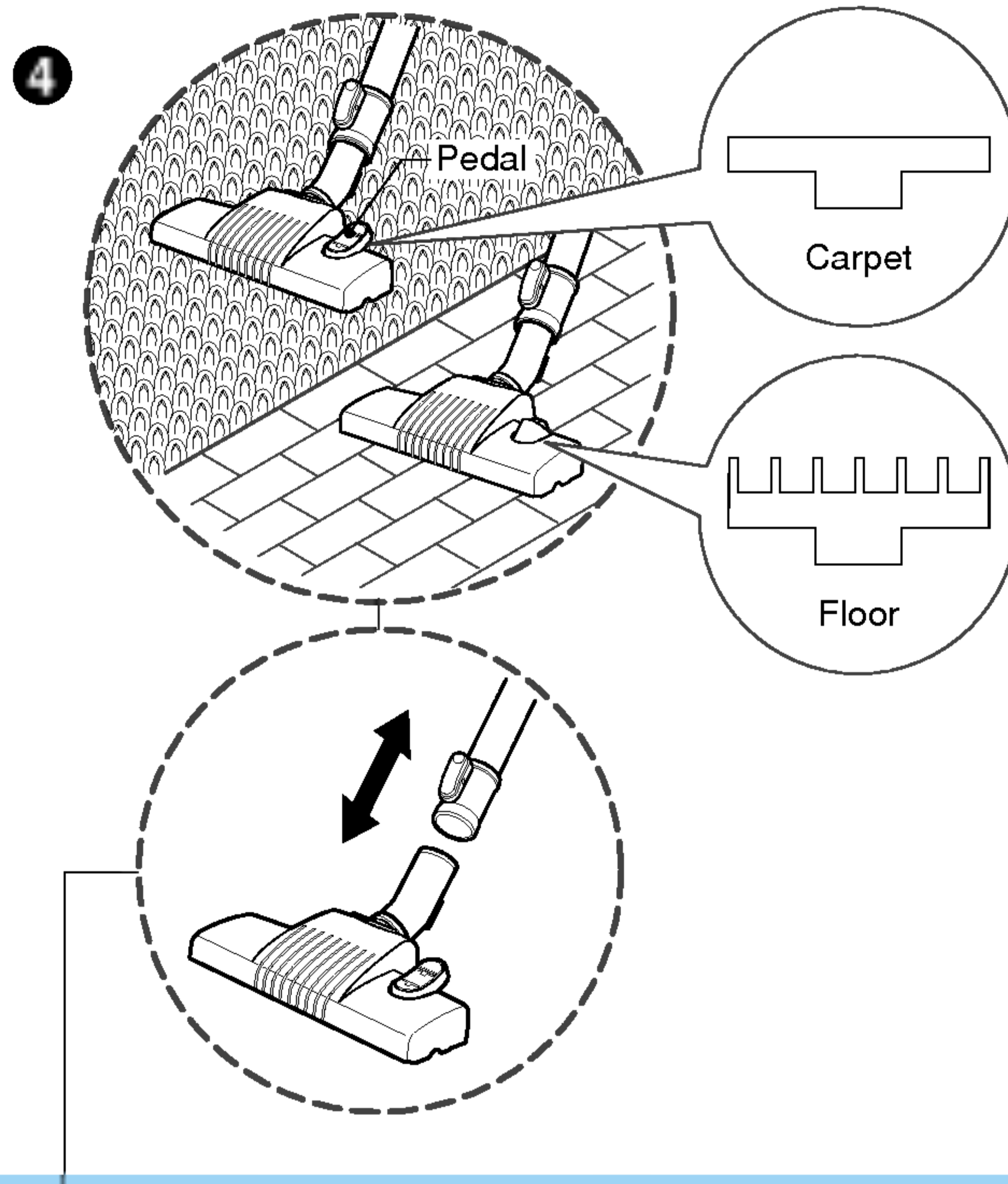
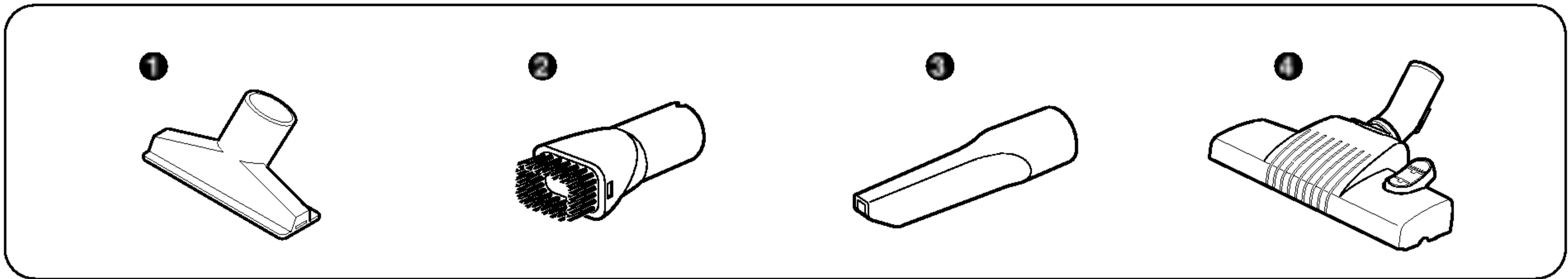
Upholstery Nozzle is for vacuuming upholstery, mattresses, etc. The thread collectors help to pick up the threads and fluff.

② Dusting Brush

Dusting Brush is for vacuuming picture frames, furniture frames, books and other irregular surfaces.

③ Crevice Tool

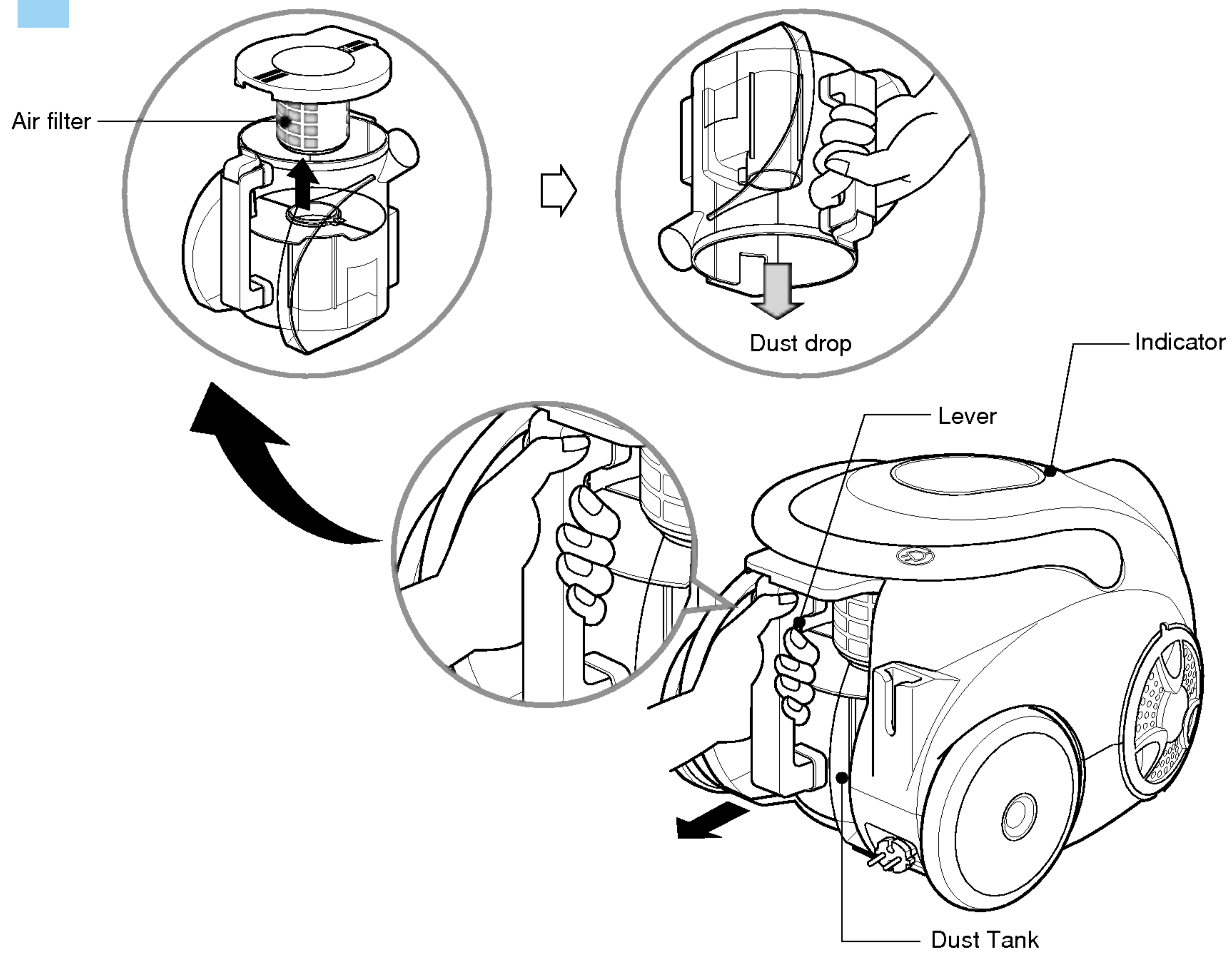
Crevice Tool is for vacuuming in those normally hard-to-reach places such as reaching cobwebs, or between the cushions of a sofa.



4 The 2 position head

- **The 2 position cleaning head**
equipped with a pedal which allows you to alter its position according to the type of floor to be cleaned.
- **Carpet or rug position**
Press the pedal to lower brush.
- **Hard floor position**
(tiles, parquets floor)
Press the pedal to lift the brush up.

How to Use Emptying the Dust Tank



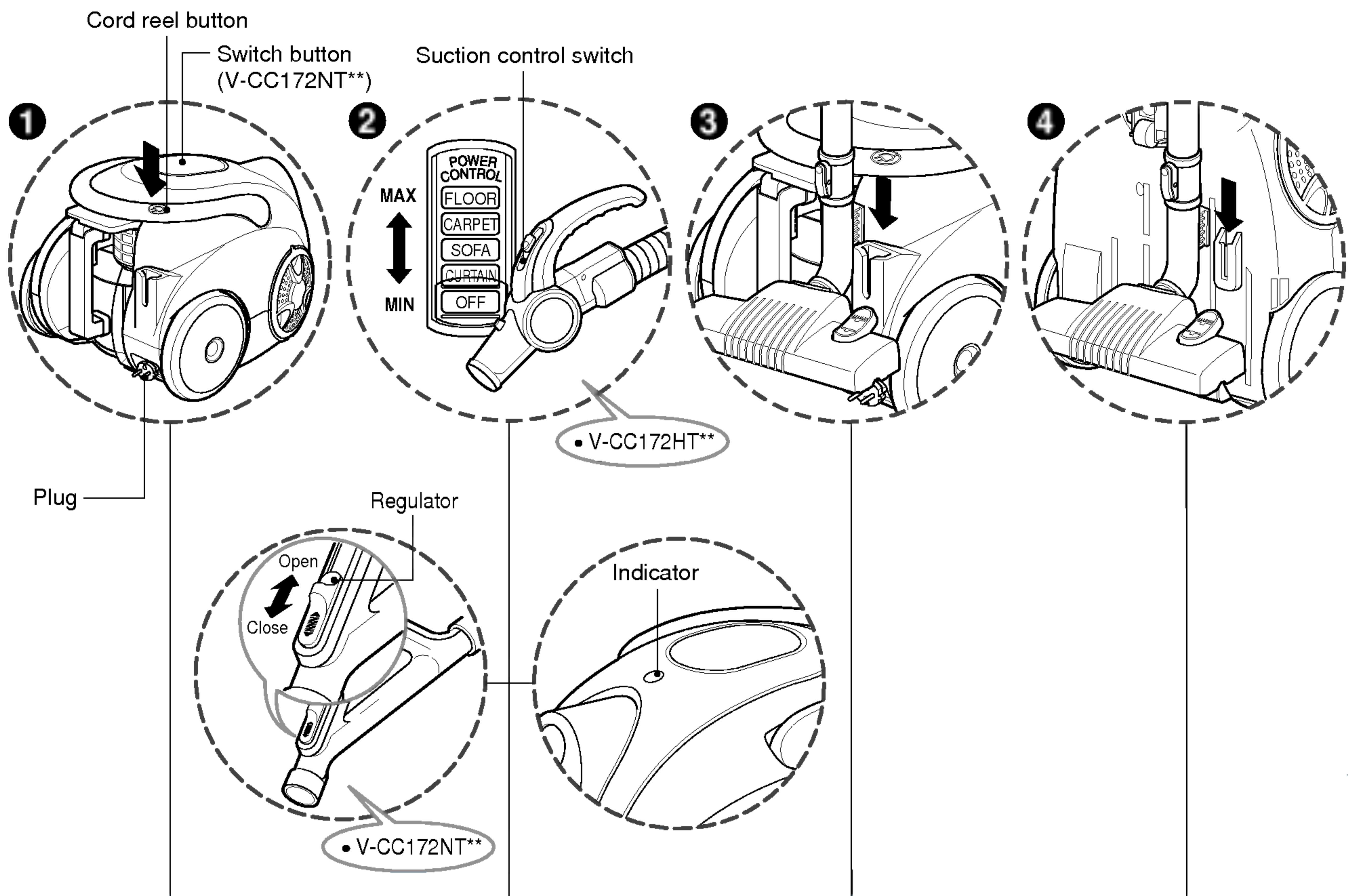
The dust tank needs emptying when indicator is turned to red.

- Turn off the vacuum cleaner and unplug it.
- Press the lever of tank handle and pull the dust tank out.
- Remove the dust tank cap and empty the dust tank.
- To reinstall the dust tank, replace the dust tank cap and push the dust tank into the tank mount as far as it will go.

⚠ CAUTION

- Suction power may be weakened when insignificant dusts are sucked. In this case, clean the filter.
- When the indicator light comes on the Air Filter requires cleaning.

Operation



1 How to Plug in and Use

- Pull out the power cord to the desired length and plug into the socket.
- Push the suction control switch of the handle in the direction of the position what you want. (V-CC172HT**)
- To stop it, push down the suction control switch in the direction of OFF. (V-CC172HT**)
- Press switch button to start the vacuum cleaner. (V-CC172NT**)
- To stop it, press the switch button again. (V-CC172NT**)
- Press the cord reel button to retract the power cord after use.

2 Adjusting the Suction level

- Adjust suction with the suction control switch in the hose handle. (V-CC172HT**)
- The flexible hose handle has a manual air flow regulator which allows you to adjust the suction level briefly. (V-CC172NT**)
- The indicator is lighted on when the Dust Tank is closely filled with or Air filter is clogged.
 - ➔ Empty the Dust Tank and clean the Air filter.
- The indicator could be lighted when sucking fine. At this time clean the Air filter.

3 Park System

- To store after vacuuming and pause while vacuuming.
- For deposit after vacuuming, for example to move a small piece of furniture or a rug, use the Park system to support the flexible hose and cleaning head.
 - Slide the hook on the large cleaning head into the slot on the rear of the vacuum cleaner.

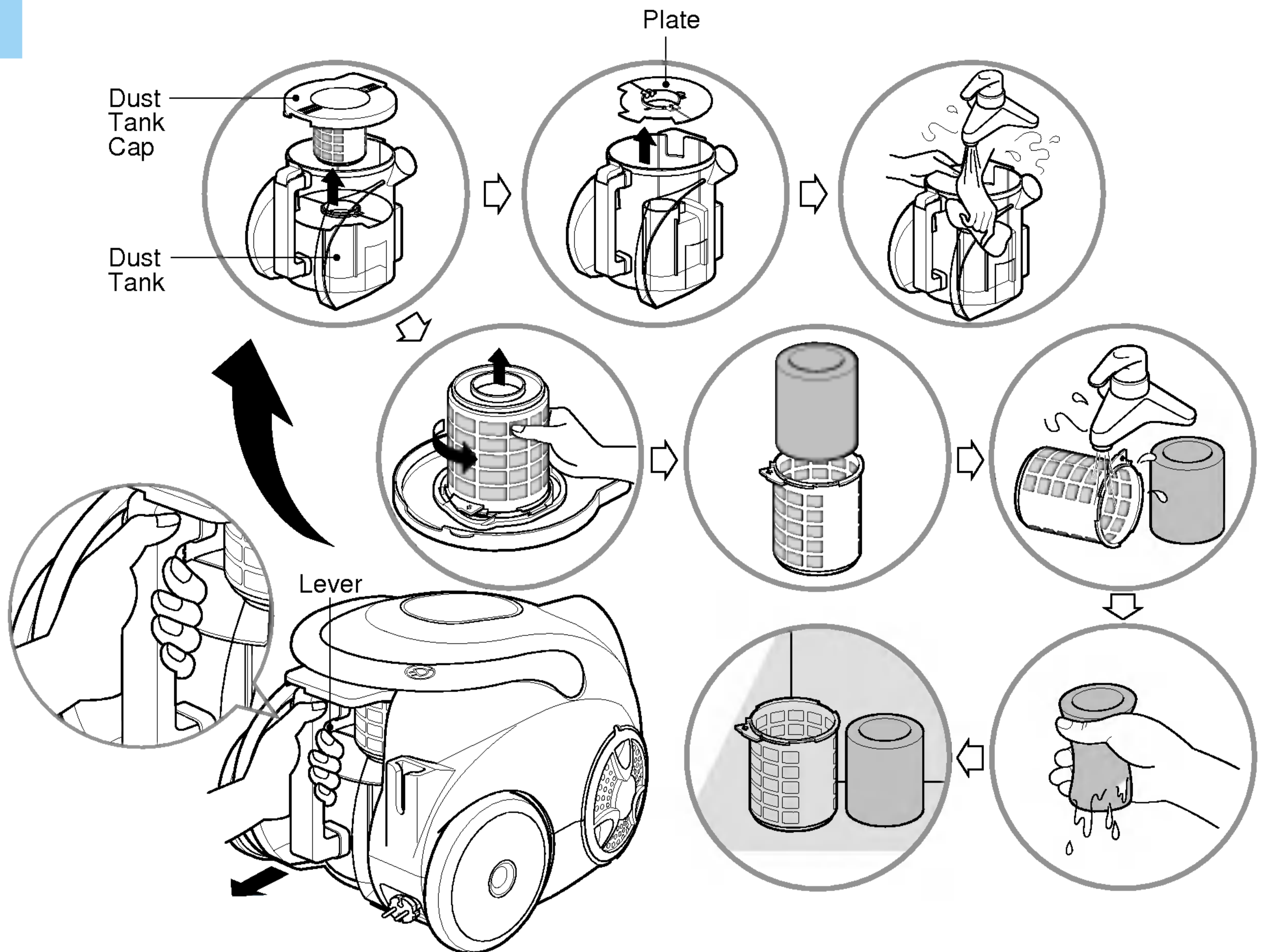
4 Storage

- When you have switched off and unplugged.
- The appliance, press on the button to automatically rewind the cord.
- You can store your appliance in a vertical position by sliding the hook on the large cleaning head into the clip on the underside of the appliance.



How to Use

Cleaning the Air Filter and the Dust Tank



The permanent Air Filter is situated under the dust tank cap. When the indicator light comes on the Air Filter requires cleaning.

- Press the lever of tank handle and pull the dust tank out.
- Open the dust tank cap.
- **Cleaning the Air Filter.**
 - Remove the Air Filter by rotating it counter-clockwise.
 - Clean the Air Filter.
 - Allow the Air Filter to dry naturally, the Air Filter should be cleaned every 6 months.
- **Cleaning the Dust Tank.**
 - Remove two plates from the dust tank.
 - Wash both parts with soft cloth. Gently rinse both parts under cold running water.

WARNING!

Gently rinse both parts separately under a cold running water until the water runs clear. **Hand wash only with damp cloth.**

Shake off excess water from the filter.

Do not tumble/spindry, microwave or place in oven or on direct heat.

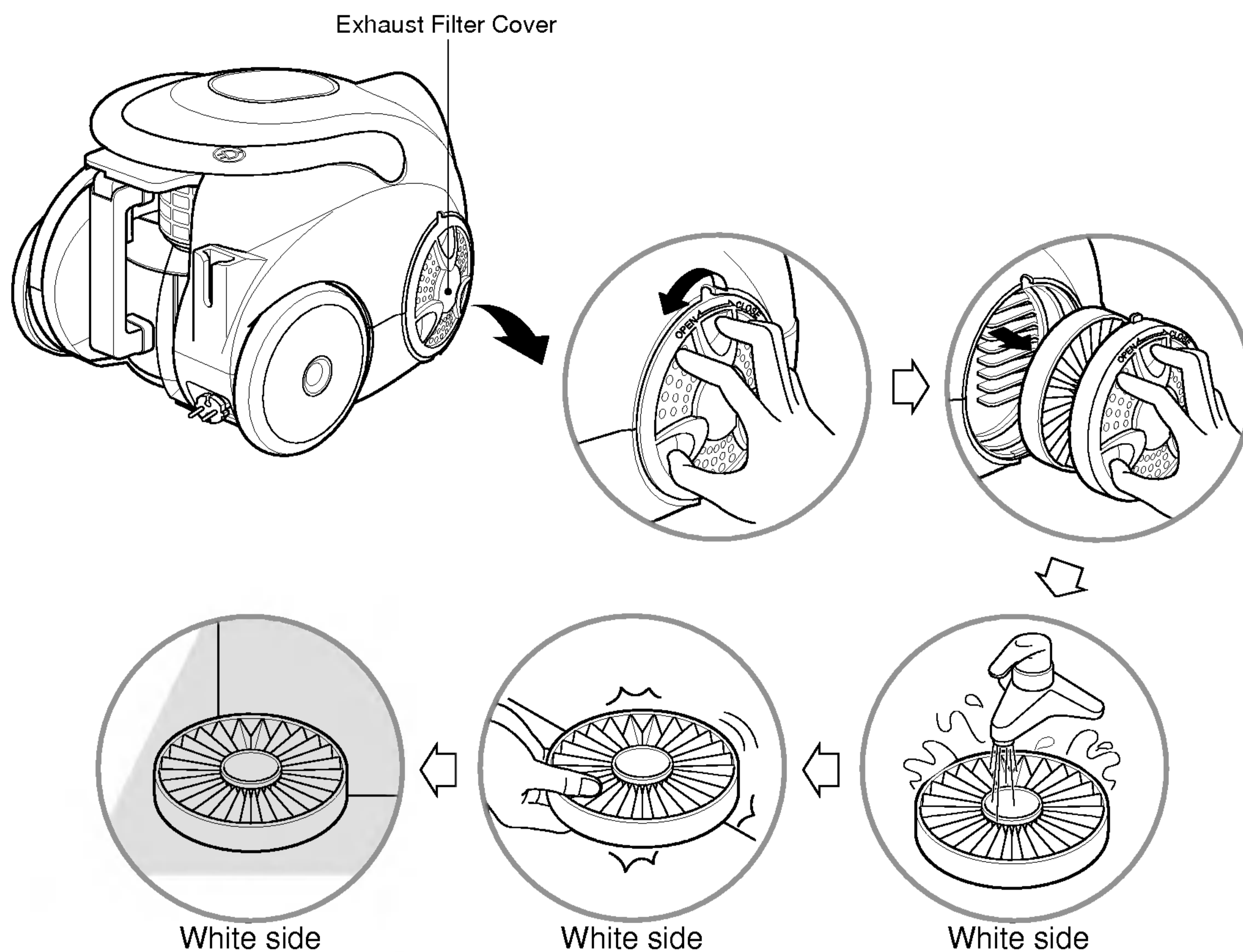
Ensure the filter is completely dry.

Re-assemble and place it back in your machine, filter frame.

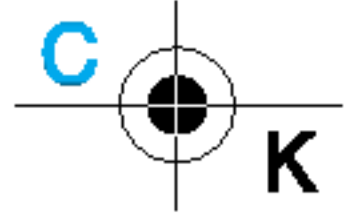
If the filter is damaged, do not place them in the machine.

Please call the Helpline.

Cleaning the Motor Exhaust Filter



- The exhaust filter is a washable reusable HEPA filter.
- To clean the exhaust filter, remove the filter cover on the body by rotating the filter cover counter-clockwise.
- Pull out the exhaust filter.
- Clean it with cold, running water. Do Not use the brush as this will damage the filter.
- When you wash the filter, make sure don't wash the blue side.
- Allow exhaust filter to dry completely in a shaded location for a dry.
- The exhaust filter should be cleaned at least once a year.



What to Do if Your Vacuum Cleaner Does Not Work

Check that the vacuum cleaner is plugged in correctly and that the electrical socket is working.

What to Do When Suction Performance Decreases

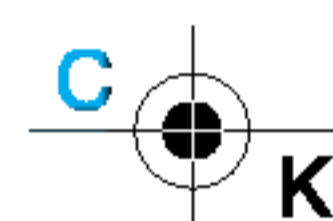
- Turn off the vacuum cleaner and unplug it.
- Check the telescopic pipe, flexible hose and cleaning tool for blockages or obstructions.
- Check that the dust tank is not full. Empty if necessary.
- Check that the exhaust filter is not blocked. Clean the exhaust filter, if necessary.



WARNING!

Should it become necessary to replace the moulded plug then the detective plug should be replaced by a qualified electrician.

Notes



Notes



